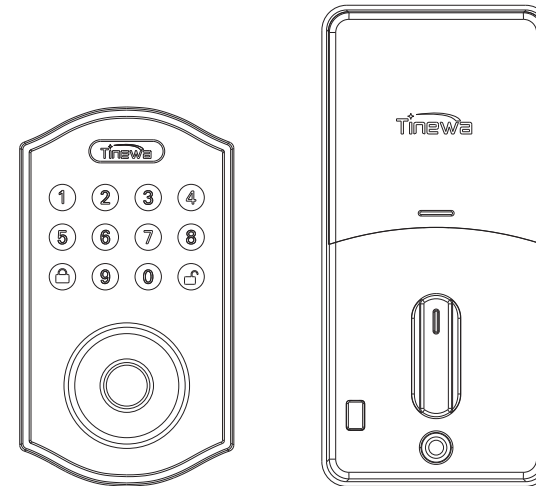


DLE080003-XX-2024V1



Contact us

Thank you for choosing Tinewa. If you have any questions or suggestions, please contact us:

Email: service@tinewa.com

Website: <http://www.tinewa.com>

We offer a warranty and lifetime free technical support.

User Guide

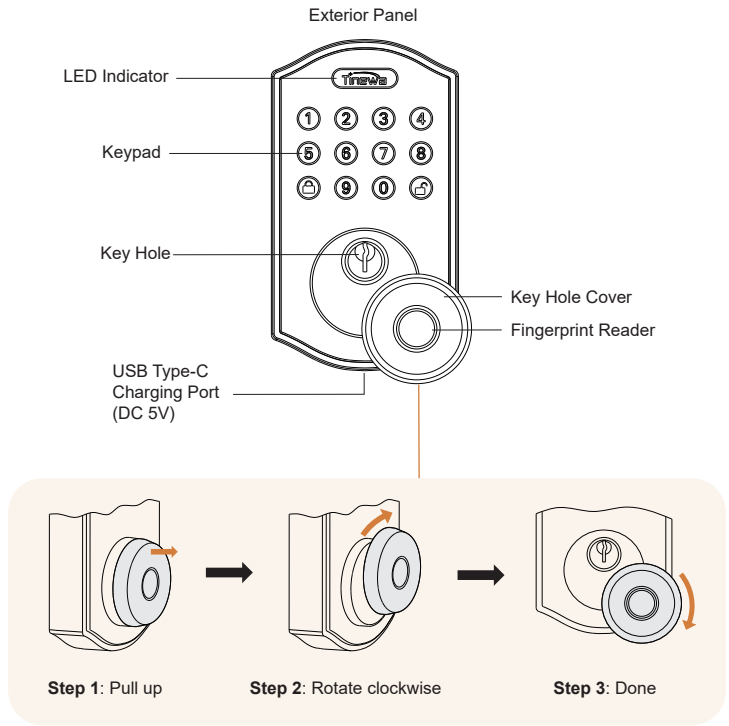
Model: DLE601

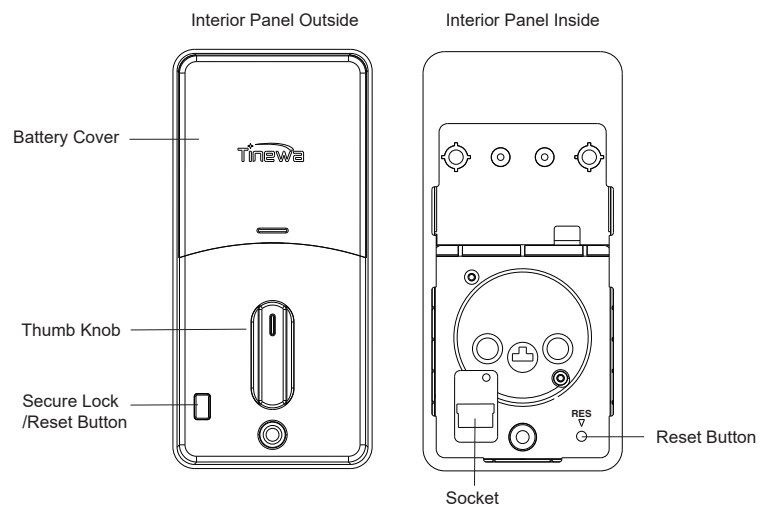
Table of Contents

Getting Started	02
Product Description	02
Parts in the Box	03
Assembly Diagram	04
Lock/Unlock	05
Operation Instructions	06
Check the Door Dimensions	06
Installation	07
App Operation Guide	11
Keypad Programming	14
Drill Holes	15
Outstanding Functions	16
FAQ	18
Specifications	24
FCC WARNING	25




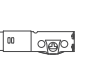
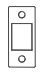









Getting Started

Product Description

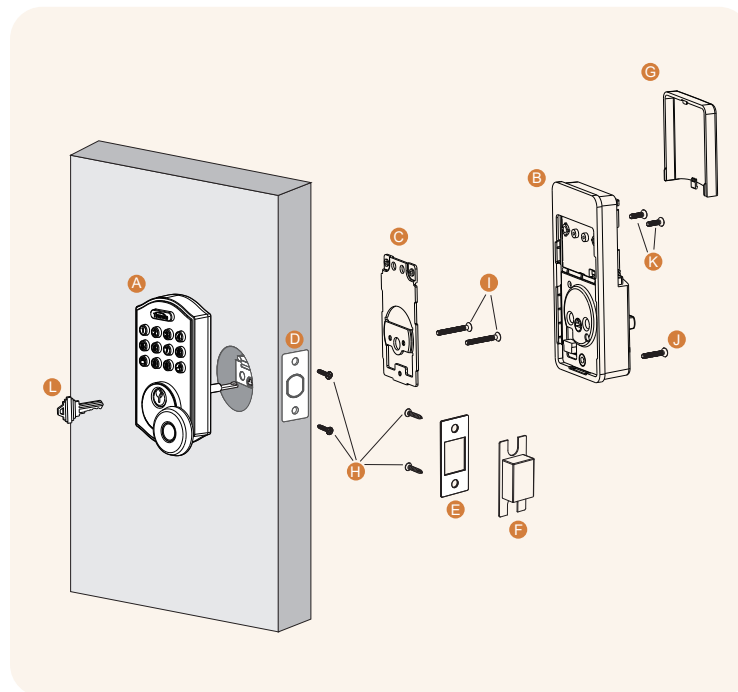




Parts In the Box

A  Exterior Panel	B  Interior Panel	C  Mounting Plate	D  Latch	E  Striking Plate
F  Striking Plate Box	G  Battery Cover	H  Screw A(20mm) 5pcs(1pc spare)	I  Screw B(30mm) 3pcs(1pc spare)	J  Screw C(25mm) 2pcs(1pc spare)
K  Screw D(10mm) 3pcs(1pc spare)	L  Keys 2pcs	 Connecting Column (1pc spare)	 Template	

Assembly Diagram



Lock/Unlock

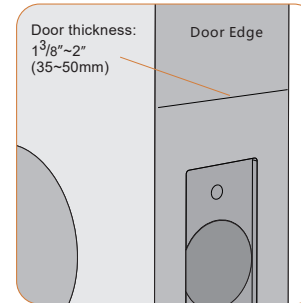


Operation Instructions

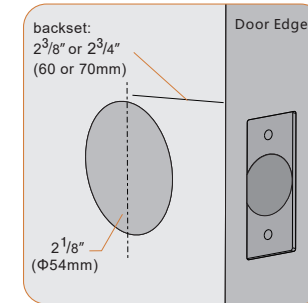
Note: For Undrilled door, skip to "Drill Holes"(page15).

1.Check the Door Dimensions

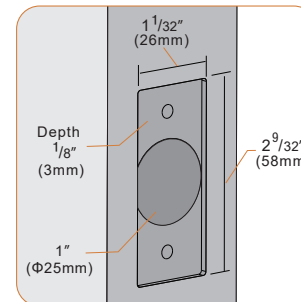
Note: The following figures are provided for reference only. These are recommended MINIMUM value. The error value should be less than 2mm.



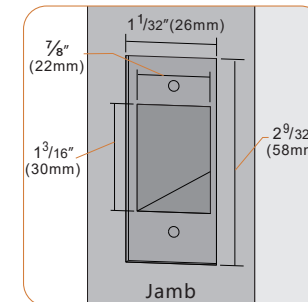
A Check the door thickness:
1³/₈"~2"(35~50mm)



B Check the bore hole: 2¹/₈"(Φ54mm)
Check the backset: 2³/₈" or 2³/₄"
(60 or 70mm)



C Check the attach faceplate:
Width - 1¹/₃₂"(26mm)
Height - 2⁹/₃₂"(58mm)
Depth - 1¹/₈"(3mm)
Latch bore - 1"(25mm)

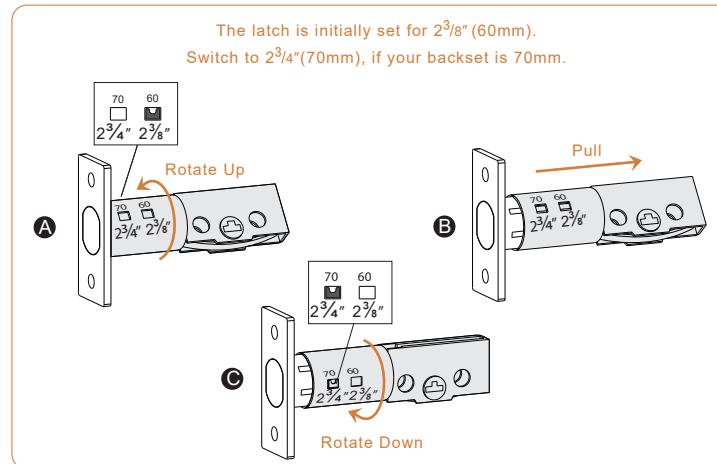


D Check the striking plate:
Width - 1¹/₃₂"(26mm)
Height - 2⁹/₃₂"(58mm)
Hole Width - 7¹/₈"(22mm)
Hole Height - 1³/₁₆"(30mm)

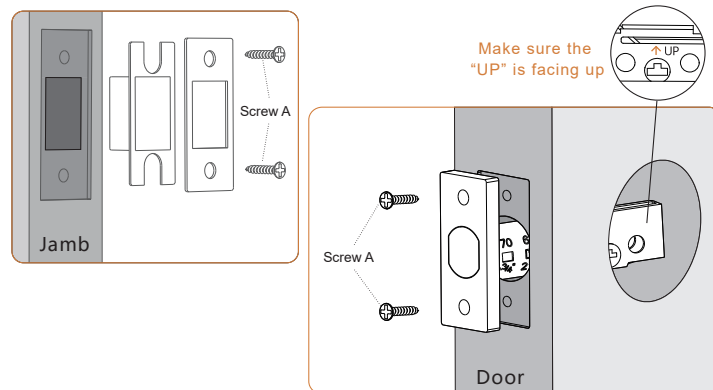
2.Installation Guide

Note: Keep the bolt retracted in the following steps

• Adjust the Latch



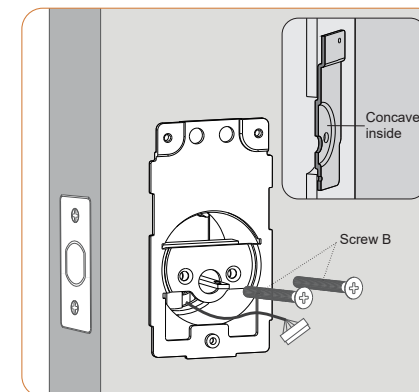
• Install Latch and Striking Plate



• Install Exterior Panel

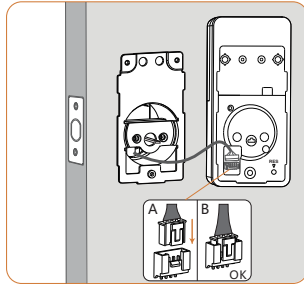


- A** Turn the spindle to Horizontal and align the spindle with the latch.
Pass the cable under the latch.

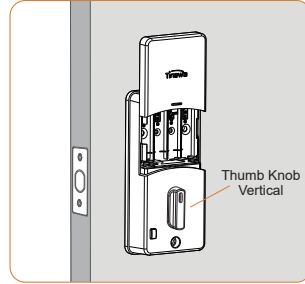


- B** Pass the cable and spindle through the hole.
The concave of the mounting plate should be inside.
Secure the mounting plate with Screw B.

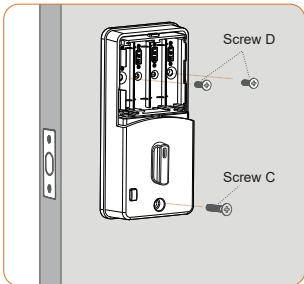
• Install Interior Panel



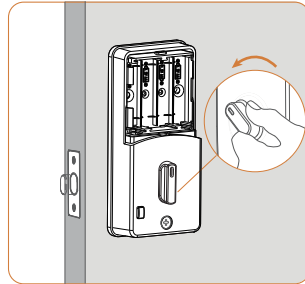
A Insert the connector of the cable to the socket.



B Remove the battery cover.

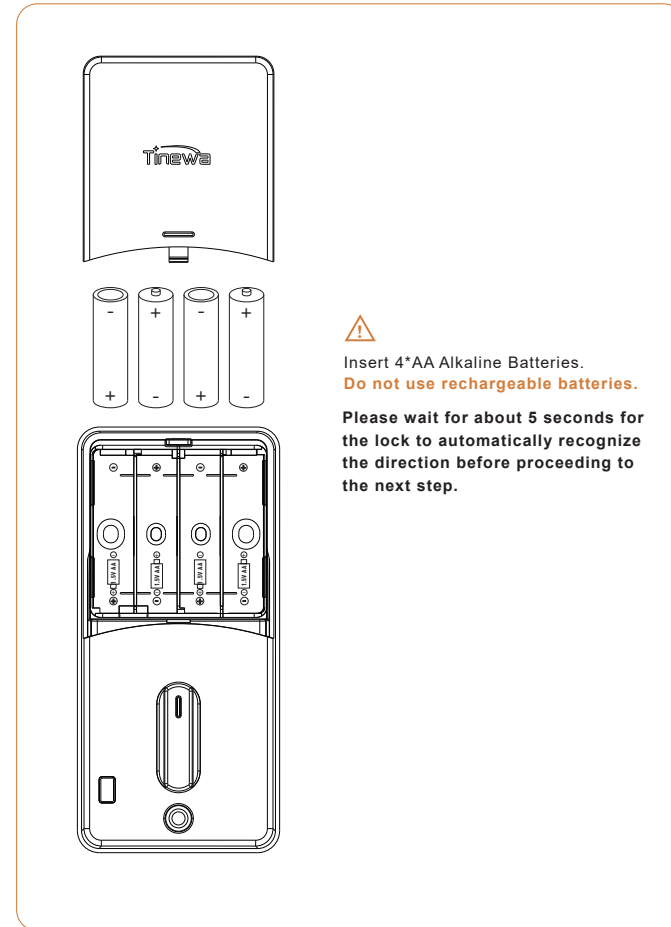


C Secure the interior panel with Screw C and Screw D.



D Turn the thumb knob and check whether it works.

• Install Batteries



3. App Operation Guide

We recommend using app because it's easier to set and more convenient for future use. If you prefer Keypad Programming, please skip to page 14.

- **Download Tinewa App**

Option1: Search "Tinewa" in App Store for iPhone / in Google Play Store for Android to download the App.

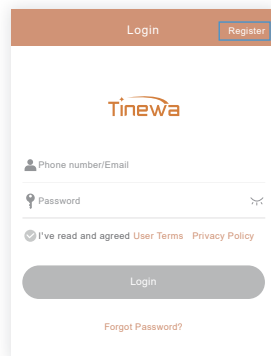
Option2: Scan the QR code below to download Tinewa App, for both iOS(iOS 7.0 above) and Android(Android 4.3 above) system.



- **Turn on the Phone's Bluetooth and keep your phone close by the lock during the following steps.**

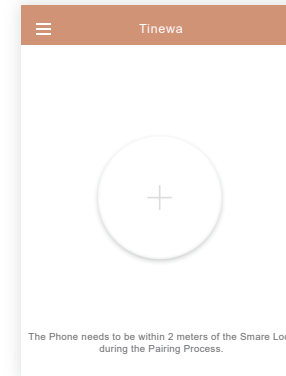
- **Register and Log in**

At the top right of the screen, tap "Register" as shown in the picture to register. You can use Email or Phone Number to sign up for a Tinewa account.



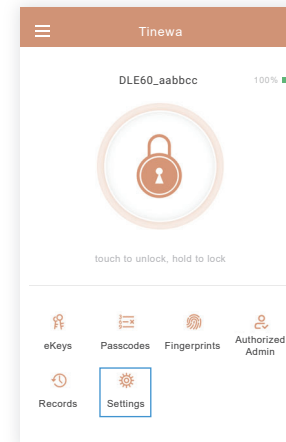
- **Connect Smart Lock to Tinewa App**

Tap the "+" button → Next → Select the Lock, tap "+" on right → Name Your Lock→ OK



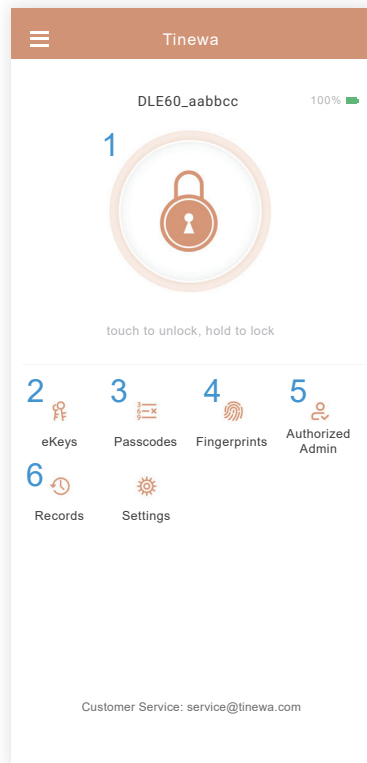
- **Change your Administrator Passcode**

Settings → Basics → Admin Passcode → Passcode



• App Function Introduction

1. Lock/Unlock: Touch to unlock, hold to lock. Please follow the steps in App.
2. eKeys: After registration recipients are able to Lock/Unlock by Tinewa App. Please follow the steps in App.
3. Passcodes: Generate or Customize Timed/Permanent/One-time/Recurring Passcodes. Please follow the steps in App.
4. Fingerprints: The Timed Fingerprint can be used for unlimited times within the validity period. Please follow the steps in App.
5. Authorized Admin: The authorized administrator will have majority permission to operate this lock. Please seriously. Please follow the steps in App.
6. Records: It records the operations through App and Keypad(Keys will not included).



4. Keypad Programming

You can use keypad to set your passcode/fingerprint, if you don't want to download the app or Tinewa App is incompatible with your current phone system version.

• Change Admin Passcode(Initial Admin Passcode: 123456)

■ → 12 → ■ → Current Admin Passcode → ■ → New Admin Passcode → ■ → New Admin Passcode → ■ → Succeed

• Add User Passcode(4-9 digits)/Fingerprint

Passcode: ■ → 80 → ■ → Admin Passcode → ■ → New User Passcode → ■ → New User Passcode → ■ → Succeed

Fingerprint: ■ → 80 → ■ → Admin Passcode → ■ → Press your fingerprint five times → Succeed

Note: You can set your passcode/fingerprint in succession. Press ■ again to exit setting mode.

• Lock/Unlock

Press ■ to Lock

Press Admin Passcode/User Passcode → ■ to Unlock

• Change User Passcode

■ → 10 → ■ → Current User Passcode(the one you want to change) → ■ → New User Passcode → ■ → New User Passcode → ■ → Succeed

• Delete All User Passcodes

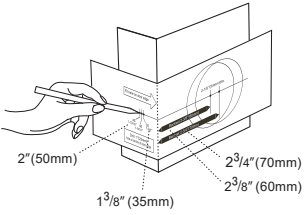
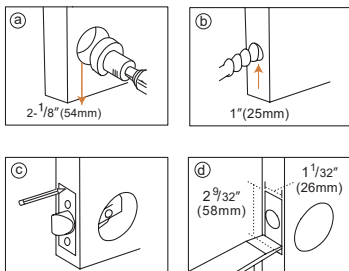
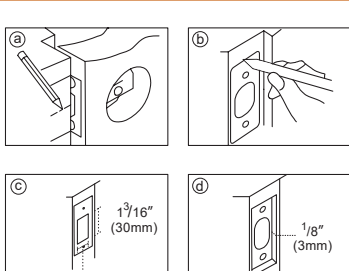
■ → 71 → ■ → Admin Passcode → ■ → Succeed

Note: Except Admin passcode, ALL user passcodes will be deleted.

• Delete All Fingerprints

■ → 70 → ■ → Admin Passcode → ■ → Succeed

5. Drill Holes

 <p>Note: Applicable door thickness: 35-50mm</p>	<ul style="list-style-type: none"> Ⓐ Choose the right template you need (for 60 or 70mm backset). Ⓑ Fold the template at the dotted line and tape the template to the interior side of the door at 34 to 48 inch Height. Ⓒ Measure the thickness of the door and mark the middle point of the door thickness. Ⓓ Mark the 2 3/8" or 2 3/4" (60 or 70mm) hole center for the backset. <p>Note: Make sure the two dots are at the same height.</p>
	<ul style="list-style-type: none"> Ⓐ Drill a Dia. 2 1/8" (54mm) hole for the lock body. Ⓑ Drill a Dia. 1" (25mm) hole for the latch. Ⓒ Insert the latch into the hole and mark the outline of the faceplate. Ⓓ Chisel a 1/8" (3mm) deep hole.
	<ul style="list-style-type: none"> Ⓐ Close the door with the latch installed and mark lines on the door jamb as shown in figure a. Ⓑ Align the striking plate with the lines. Draw the shape of the striking plate. Ⓒ Drill a 1 3/16" x 7/8" (30x22mm) and 1 3/8" (35mm) deep hole in the middle of the striking plate. Ⓓ Chisel 1/8" (3mm) deep for the striking plate.

Outstanding Functions

1. Diversified Unlock Permissions

Grant specific permissions according to usage scenarios

- 1.1 Permanent: eKeys/Passcodes/Fingerprints applicable. Grant permanent access.
- 1.2 Timed: eKeys/Passcodes/Fingerprints applicable. Grant access for a few weeks, a few hours, or a few minutes.
- 1.3 One-time: Passcodes applicable. Grant access for only once.
- 1.4 Recurring: eKeys applicable. Grant access for fixed time period of every day, every week or every month.

2. Automatic Locking

The latch will automatically pop out for locking after you close the door. Without any additional operation.

Operation: Settings → Auto Lock (5-60s, Customize)

3. Door Closing Reminder

After adding a door sensor, you will receive a voice alarm from the lock when you forget to close the door. And the latch will automatically pop out for locking after you close the door.

(NOTE: Purchase the door sensor separately.)

4. Adjustable Lock Sound

Choose to increase or decrease the volume according to your needs.

Operation: Settings → Lock Sound

5. Monitor Activity Remotely

You can receive unlock reminder (sound/notification) remotely or view the unlock record remotely when users use the eKeys to unlock. If you also want this function for other unlocking methods, an additional gateway is required.

Operation: Settings → Unlock Notification/Messages

6. Manage Access Real Time

You can generate passcodes and refresh records remotely. You are also allowed to unlock remotely by turning on the Remote Unlock.

Operation: Gateway/Settings → Remote Unlock

(NOTE: Purchase the Gateway separately.)

7. Anti-peep Passcode

Add random digits to protect your passcode from prying eyes.

Operation: No extra setting. Just enter random digits before or/and after the true passcode

(NOTE: Total length should be less than 16 digits.)

example: 765(random number) + 112233(true passcode) + 4899(random number)

8. System Locked Automatically for Security

The lock system will be temporarily locked, if somebody enters incorrect passcode/fingerprint FIVE times. In this case, you can only unlock with the Tinewa App or wait 3 minutes.

9. Secure Lock

Press the Secure Lock Button for 3 seconds to activate Secure Mode. When the Secure Mode is ON, only Administrator Passcode and Keys can unlock the door from the outside.

10. Unlock in an Emergency

Unlock your Smart Lock using a portable battery when it is out of power.

11. Low Battery Warning

- (a) In the battery low status, there will be a voice reminder while the keypad activated.
- (b) The battery percentage can be viewed in the Tinewa App. The icon will turn red when the percentage under 25%.

12. Ready For All Weathers

With an IP65 waterproof rating, Smart Lock built to withstand low and high temperature (-4°F ~ 158°F)

13. Multiple Locks Management

You are allowed to manage variety of Tinewa smart locks by Tinewa App.

Operation: Add Lock.

14. Multilingual Support

Tinewa App offers multilingual support.

Operation: App Settings-Languages.

15. One Click Transfer

Transfer all data of the selected lock(s) to the recipient permanently. In this case, you don't need to reset the lock if the administrator of the lock changes.

Operation: App Settings-Transfer Lock(s)

16. eKeys/Passcodes/Fingerprints Management

You can rename eKey/Passcode/Fingerprint, delete it, change the validity period and passcode in the Info page.

You are allowed to delete passcode and fingerprint, and change passcode on the keypad as well. For details, please refer to Keypad Programming.

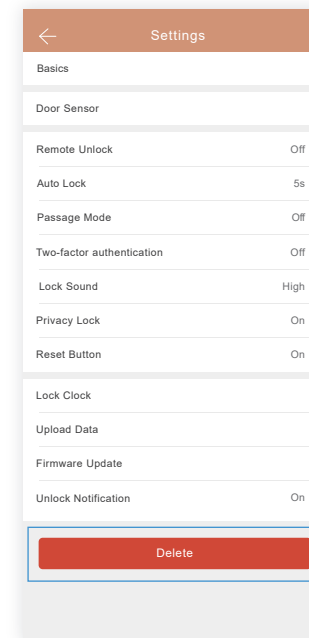
Operation: eKeys/Passcodes/Fingerprints

FAQ


1. How to reset the lock?

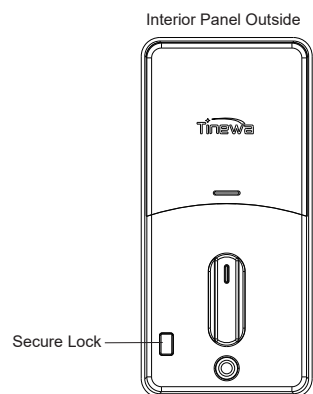
Method 1:

If you are a Tinewa Bluetooth Administrator, in the Settings, you can delete the lock from your account.




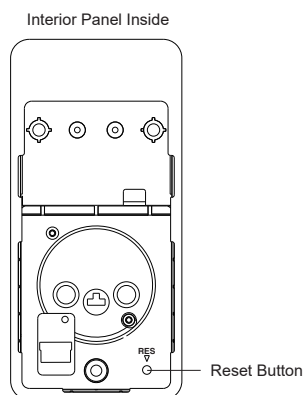
Method 2:

- (a) Take out a battery for 5 seconds.
- (b) Put it back and press the Secure Lock Button for 10 seconds immediately.
- (c) On hearing "Please input initialization passcode", enter "000" 



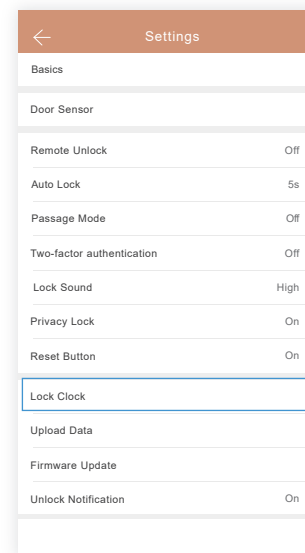
Method 3:

- (a) Take out batteries and disassemble the Interior Panel.
- (b) Power on again and press the Reset Button for 3 seconds.
- (c) On hearing "Please input initialization passcode", enter "000" 



2.I set a timed passcode/eKey/fingerprint between 13:00-17:00, but it still works at 18:00.

Under this circumstance, please calibrate the lock time via Lock Clock.

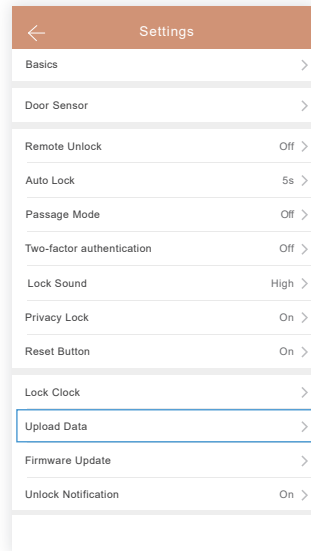


3.Why the Record Page didn't show all lock/unlock records?

If the records didn't update in a timely manner, you can refresh records at up right near the lock. You have to connect a gateway, if you want to receive the records remotely.

4. Why the passcode/fingerprint I set on the Keypad doesn't show in my Tinewa App?

In this case, please upload data from lock to App. It may take several minutes, please be patient.



5. Why my lock appears to look locked, when it is not? (Lock Mechanism Backwards)

If your door opening direction is wrong, your lock mechanism will be opposite.

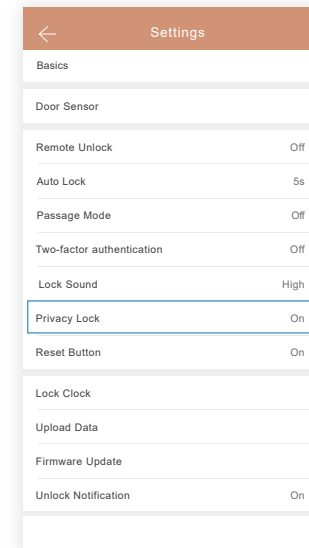
You can change the opening direction on the Keypad

Left-handle: → 46 → → Admin Passcode → → 1 →

Right-handle: → 46 → → Admin Passcode → → 2 →

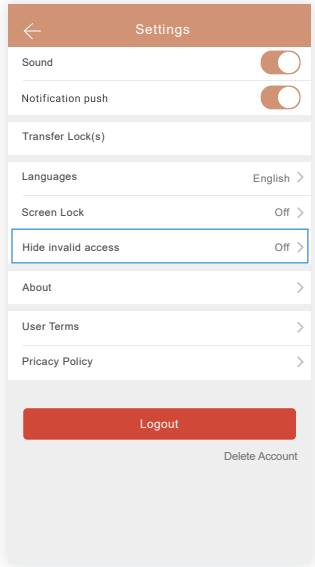
6. Why the Secure Lock Button doesn't work?

Check the Privacy Lock Function in the Settings. The Secure Lock Button is disabled when Privacy Lock is OFF.



7.Invalid passcodes/fingerprints/eKeys are so annoying, but I don't want to delete them or it's too much hassle to delete them one by one.



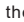
Under this situation, you can turn on the Hide Invalid Access in App Setting.



Specifications

Material	Interior Panel	ABS
	Exterior Panel	Aluminum Alloy
	Knob	Aluminum Alloy
Product Dimensions	Interior Panel	L×W×H 143×67×40 mm
	Exterior Panel	L×W×H 115×65×30 mm
Unlocking Method	APP、Fingerprint、Passcode、Key	
Mobile Phone App	Tinewa	
Working Temperature	Interior Panel	14°F~122°F
	Exterior Panel	-4°F~158°F
Working Humidity	15% ~ 95%	
Support Phone System	Android 4.3 / IOS 7.0 or above	
Passcode	Passcode digits	4-9 digits
	Passcode capacity	250 pcs
Fingerprint	Fingerprint capacity	50 pcs
	Verification Time	< 2 S
Waterproof	IP65	
Battery	4*AA(NOT provided)	
Door	Applicable Door Type	Metal or Wood
	Applicable Door Thickness	35~50mm

8.Why I can't pair my Tinewa Lock with the App?

- Step 1:** Ensure you have turn on your phone' s Bluetooth.
- Step 2:** Press any buttons on the keypad to activate it.
- Step 3:** If you have set the Administrator Passcode on the Keypad already, the Lock would be absent on the App. In this case, please press  → 83 →  → Admin Passcode →  on the Keypad, then tap the "+" button.

FCC WARNING

This device complies with part 15 of the FCC Rules. Operation is subject to the following two conditions:

- (1) this device may not cause harmful interference, and
- (2) this device must accept any interference received, including interference that may cause undesired operation.

Any changes or modifications not expressly approved by the party responsible for compliance could void the user's authority to operate the equipment.

NOTE: This equipment has been tested and found to comply with the limits for a Class B digital device, pursuant to Part 15 of the FCC Rules. These limits are designed to provide reasonable protection against harmful interference in a residential installation. This equipment generates, uses and can radiate radio frequency energy and, if not installed and used in accordance with the instructions, may cause harmful interference to radio communications.

However, there is no guarantee that interference will not occur in a particular installation. If this equipment does cause harmful interference to radio or television reception, which can be determined by turning the equipment off and on, the user is encouraged to try to correct the interference by one or more of the following measures:

- Reorient or relocate the receiving antenna.
- Increase the separation between the equipment and receiver.
- Connect the equipment into an outlet on a circuit different from that to which the receiver is connected.
- Consult the dealer or an experienced radio/TV technician for help.

To maintain compliance with FCC's RF Exposure guidelines, This equipment should be installed and operated with minimum 20cm distance between the radiator and your body: Use only the supplied antenna.