



# **User's Manual**

## Function

---



### 1080P HD Video Recording

The front and rear cameras record synchronically.

### Full Size Touch Screen

The product adopts IPS full-view Multi touch capacitive screen.

### Streaming video for rearview

Widen rearview treble than the original mirror.

### Time-lapse Photography

System starts Time-lapse Photography when the engine has turn-off.

### Automatic Lock Video

System will locks the video is being recrod when car crash.

### Loop Recording

The new video will covers the oldest one when TF card is full, except the locked video.

### Ambient Light Sensor

Adjust the brightness by system-self that based on ambient light intensity.

### Mobile Application

An Mobile App is supplied to browse the media and modify settings on Ele-mirror.

## Before install

---

1. DO NOT install it on airbag area or the front of airbag open up area  
(Please learn to know the airbag open up area from your car manual ).
2. If drilling holes is necessary , consult product dealer before. Ensure the drilling hole keep away from vehicle' s cable.
3. In order to ensure that install correctly , please use standard parts and follow installation regulation to install (Non-standard parts could be damage the product ).
4. DO NOT make the power line twining gear stick or any steering pole.  
That could be dangerous. Make sure the power line has been hidden that will not affect your driving.
5. After install, please ensure the other devices connected correctly .

## Use precautions

---

1. Please confirm that the TF card has been inserted correctly before use.
2. Please do not pull out the TF card when the machine is working to avoid damage.
3. Please pay attention to the direction of the front and back of the TF card. If you insert it upside down, it may damage the machine and the TF card.
4. If the TF card is not compatible with the machine, please install it again or try another TF card.
5. The machine supports a maximum of 128GB TF card. (use class10 high-speed card)

## Product Parameters

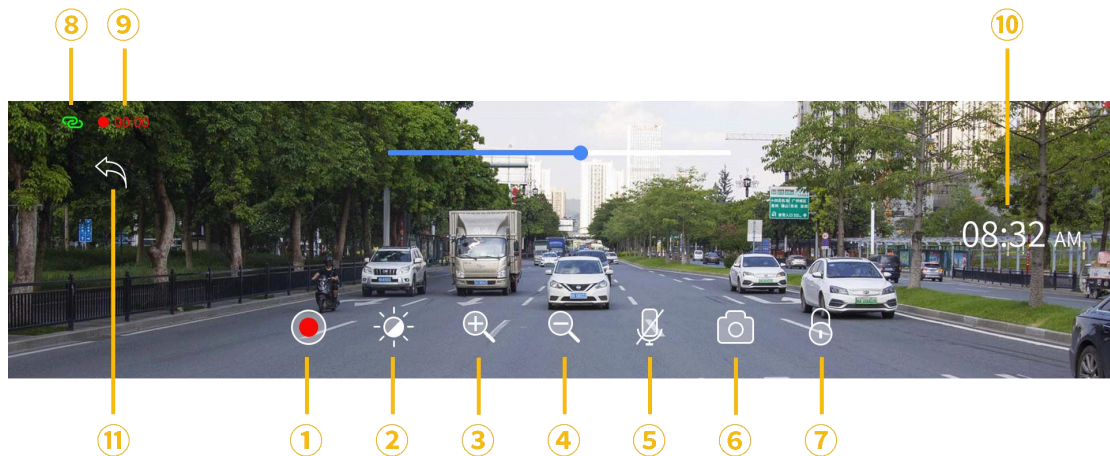
Operating system	Linux
Display screen	LCD size (9.35 inch) 1920*480 high brightness screen
Capacitive touch screen	Capacitive touch resolution 1920*480
Trumpet	Built-in 1W, 8Q
Gravity sensor	Three-axis stereo crash acceleration sensor
Time lapse video	support
Front camera	1080P, horizontal angle 108° , 25FPS, F1.8 aperture, 2 million pixels
Backup camera	1080P, horizontal angle 110° 25FPS, F2.0 aperture, 2 million pixels
Double recording front and rear	Support
TF memory card	Support TF high-speed memory card (4G-128G CLASS high-speed card)
Working power voltage	DC12V
Working power current	1.5A
Operating temperature	-20~70° C

\*Note: Specifications may be changed due to product upgrades, updates,  
please be subject to the physical product.

## Product Features and Operations

---

After installing this camera, start the car to display the default streaming screen. Click "Screen", the screen will appear mutual interface.



1. Click to start/stop recording
2. Automatically/manually adjust screen brightness
3. Click to enlarge the image, a total of three gears (only the rear camera has this function)
4. Click to zoom out the image, a total of three gears (only the rear shot has this function)
5. Open by default. Click the sound recording switch to turn off the current sound recording function
6. Click to take a rear view shot
7. lock the currently playing video
8. The icon displayed in the upper left corner turns green for connected mobile WIFI, and gray for not connected

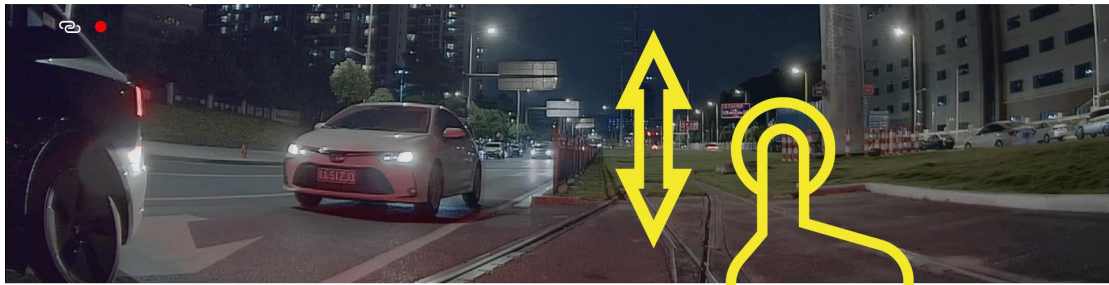
9. Show current recording time
10. Displays the time of the day
11. shot enter the system main interface

\*Note: Please do not adjust or set the rear view mirror during driving,  
to avoid traffic accidents.

## Product Features and Operations

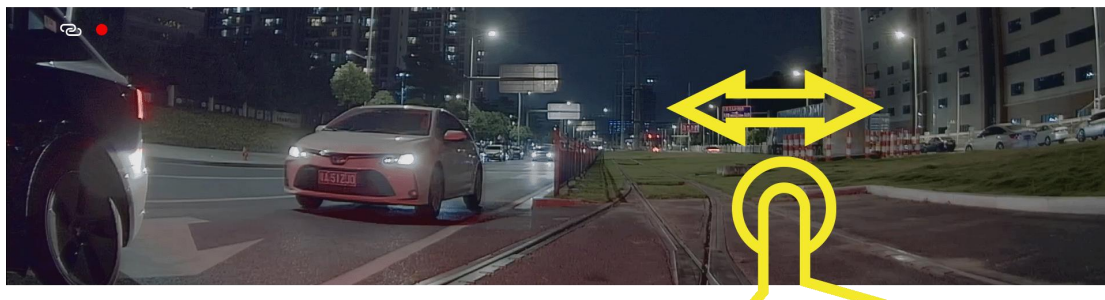
---

Display the camera's up and down viewing angles :



Slide your finger up and down the screen to adjust the vertical angle of the camera. After the adjustment is completed, the system automatically saves the current viewing angle.

Display front view, rear view, front and rear split screen display:



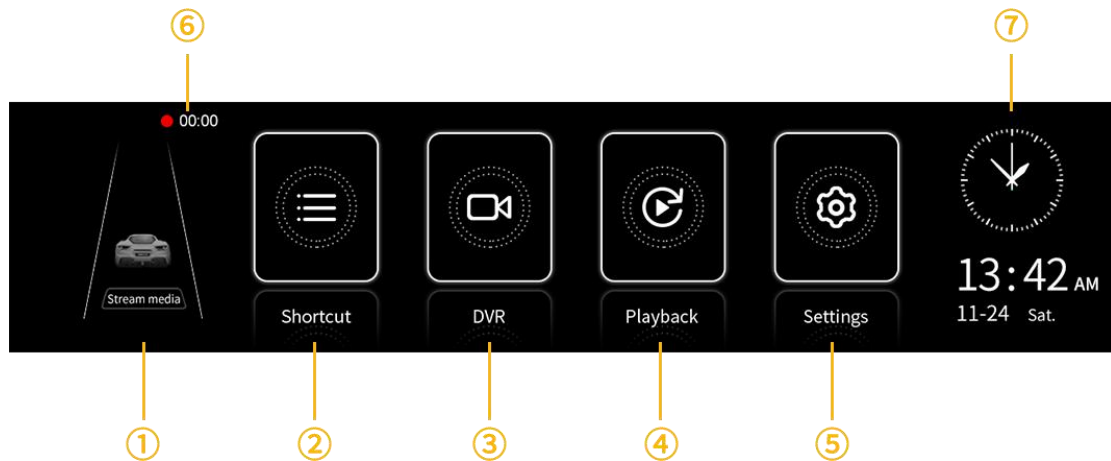
Slide your finger left or right at the bottom of the screen to switch between front and rear viewing angles or split screen display. After the adjustment is complete, the system automatically saves the current viewing angle.



## Product Features and Operations

---

Click the "Return" button on the streaming media screen to enter the main interface.



1. Rear View: Click to enter the streaming media rear view interface
2. Shortcut: Click to enter the shortcut operation sub page
3. DVR: Click to enter the front view recorder screen
4. Playback: Click to enter the video storage selection screen
5. Settings: Click to enter the system settings screen
6. Display the current recording time
7. Display the date/time of the day

# Product Features and Operations

---

## 1. Streaming rear view :



## 2. Shortcut method:



**Format the TF card:** After pressing the button, click "Confirm" to format, and click "Cancel" to withdraw the command;

**Reversing line switch:** After it is turned on, when reversing, the reversing auxiliary line will be displayed;

**Power-on display settings:** There are three options: "Show REAR", "Show Front", and "Off".

**WIFI Hotspot:** You can set wifi hotspot on or off, and mobile phones can connect to the host via hotspot.

**\*Note:** Formatting will delete all file contents in the TF card and cannot be recovered.

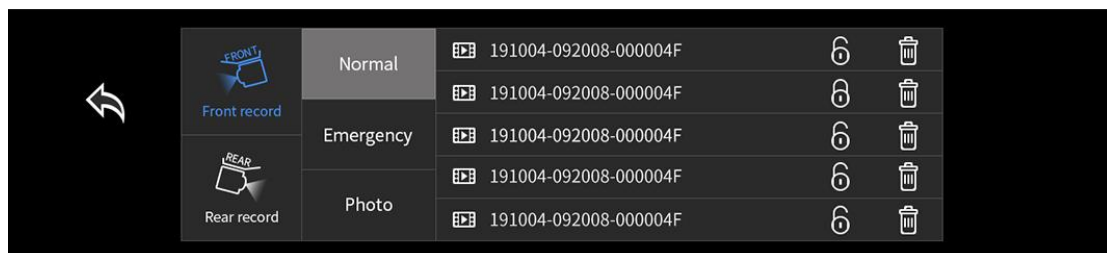
## Product Features and Operations

---

### 3. Streaming front view:



### 4. Video playback : Select a file in playback mode, and press "Play/Pause" to play.



Select "Video file": click to enter the full screen to play the video;

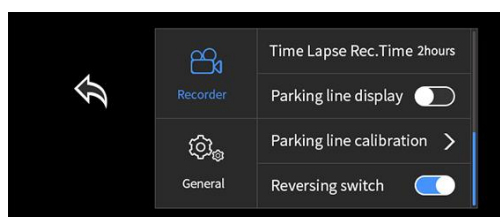
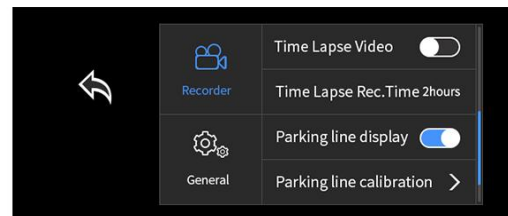
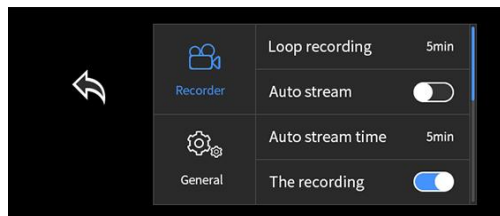
Click the "Lock" icon: you can choose to lock files, unlock files or unlock all files;

Click the "Delete" icon: you can choose to delete all unlocked files and delete the current file.

## Product Features and Operations

---

### 5. "Recording mode" settings :



**Loop recording:** You can choose the recording time of "1 minute", "2 minutes" or "3 minutes" for loop recording;

**Recording:** microphone on/off during recording, the system is enabled by default;

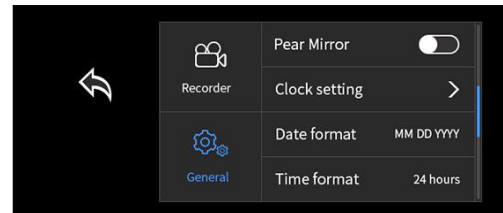
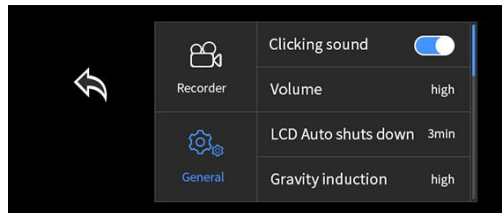
**Time-lapse video:** You can choose the recording time of "2 hours", "8 hours", "12 hours" or "24 hours" . After the car is turned off, the system will

**Reversing line switch:** Displays the reversing assist line on/off.

## Product Features and Operations

---

6. System Settings: Use the up and down swipe gesture to expand the remaining settings options.



**Clicking sound:** touch button sound on/off, the system is off by default;

**Volume:** You can choose the volume after "video playback", which are "high", "medium", "low" and "off" options;

**LCD Auto shuts down:** You can choose "Off" the screen, or choose "1 minute" or "3 minutes" to turn off the screen.

**Gravity induction:** Select sensitivity options such as "Off", "High", "Medium" or "Low" Gravity sensing sensitivity, the system will protect the video to avoid losing video files. );

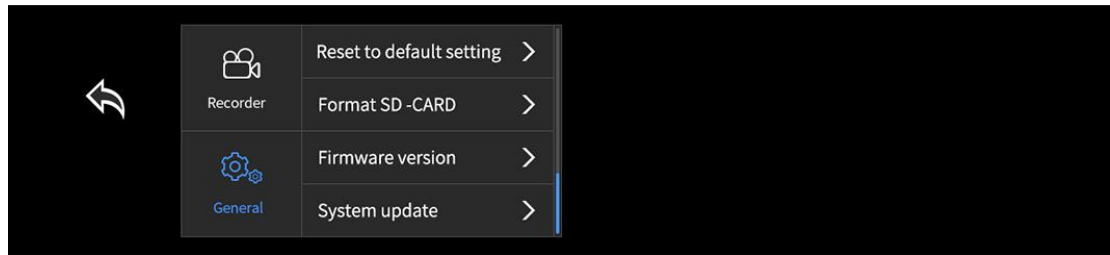
**Rear Mirror:** Turn on/off the mirror of the rear view, the system is turned on by default (after it is turned off, the rear view will be mirrored and displayed in reverse.);

**Clock setting:** After entering, you can manually set the current date/time;

**Date format:** select "12 hours" or "24 hours";

## Product Features and Operations

---

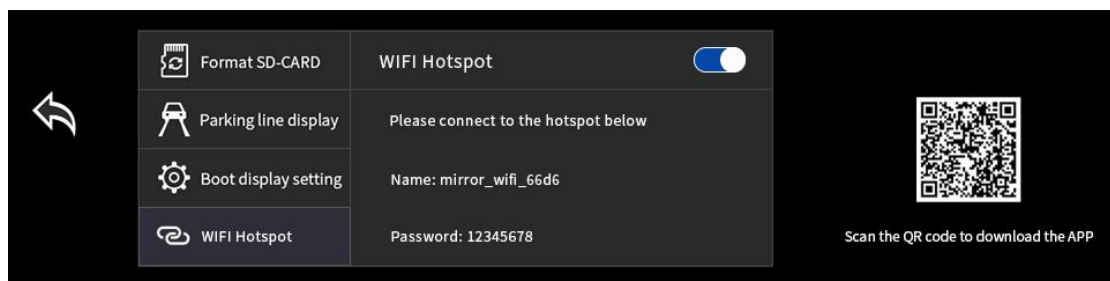


**Reset to default settings:** reset all setting options and restore to factory default settings;

**Format SD card:** After selecting this item, click "Yes" to start formatting the SD card, and click "No" to exit.

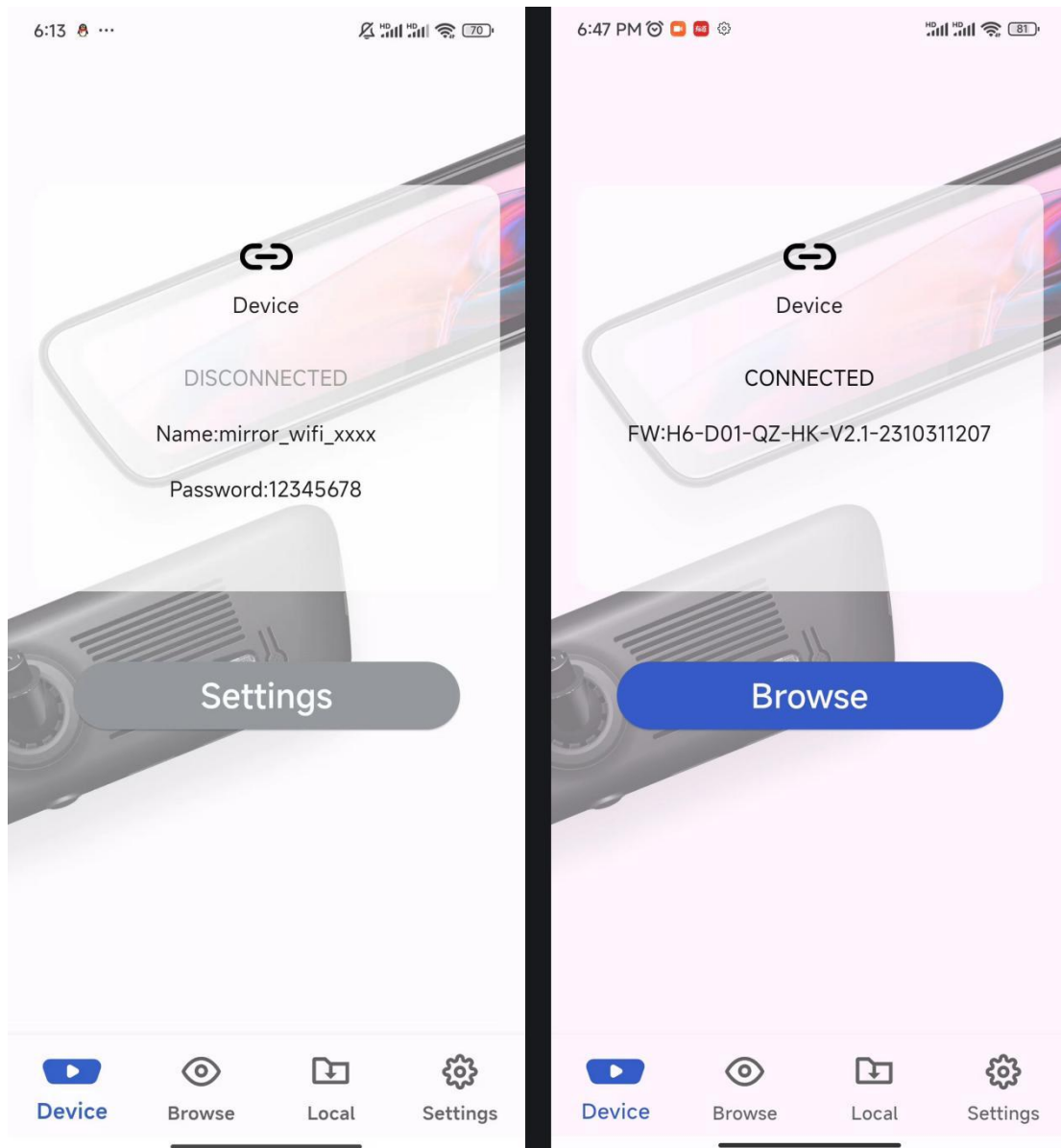
**Firmware Version:** Displays the current firmware version and model.

How to connect and access rearview mirror via Mobile App?

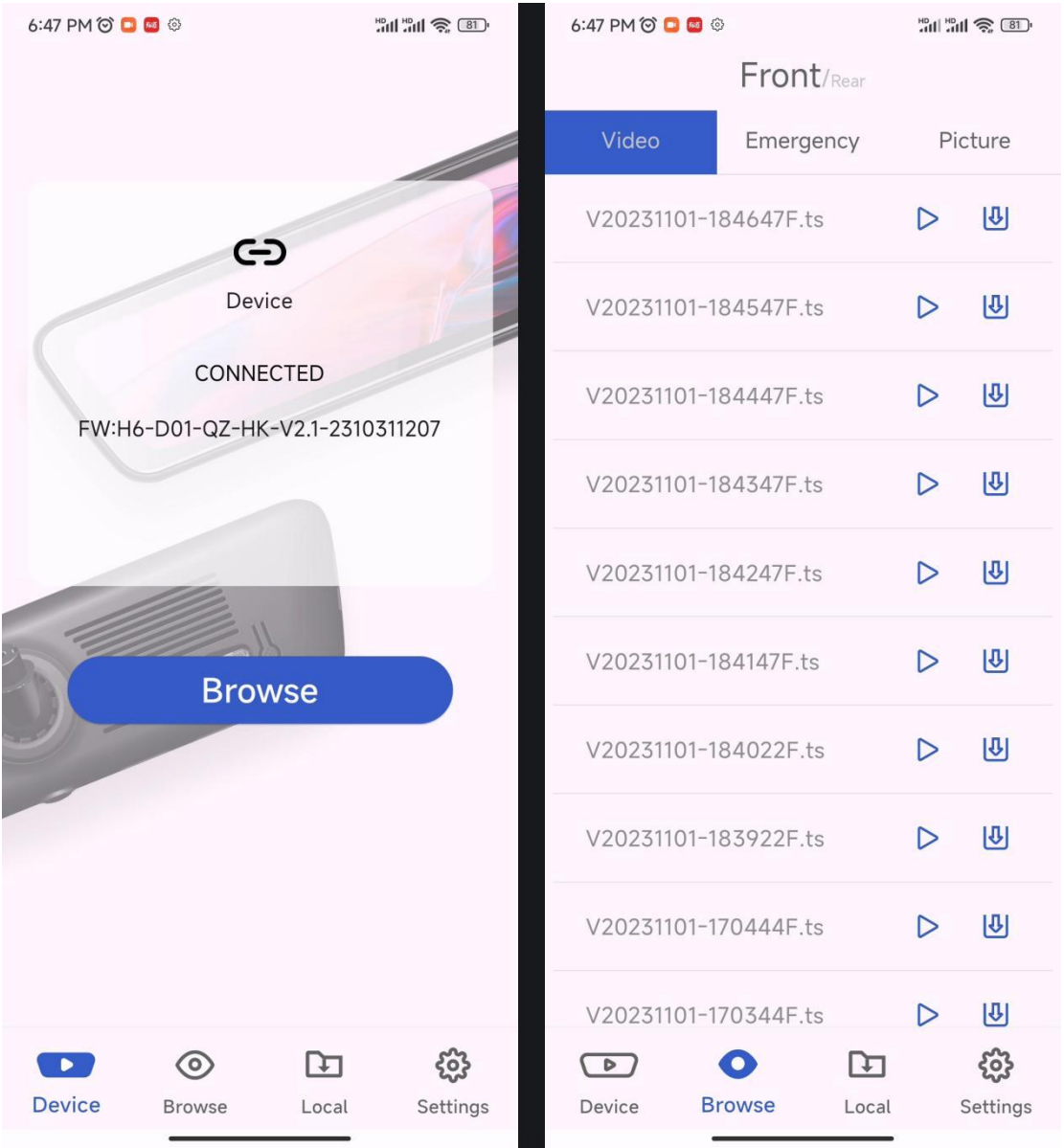


An Mobile App is supplied to browse the media and modify settings on Ele-mirror. download and install the APP by scanning the QR code on your mobile phone.

1. tab "Device", it shows the connection status, it will show the firmware information once it's connected.

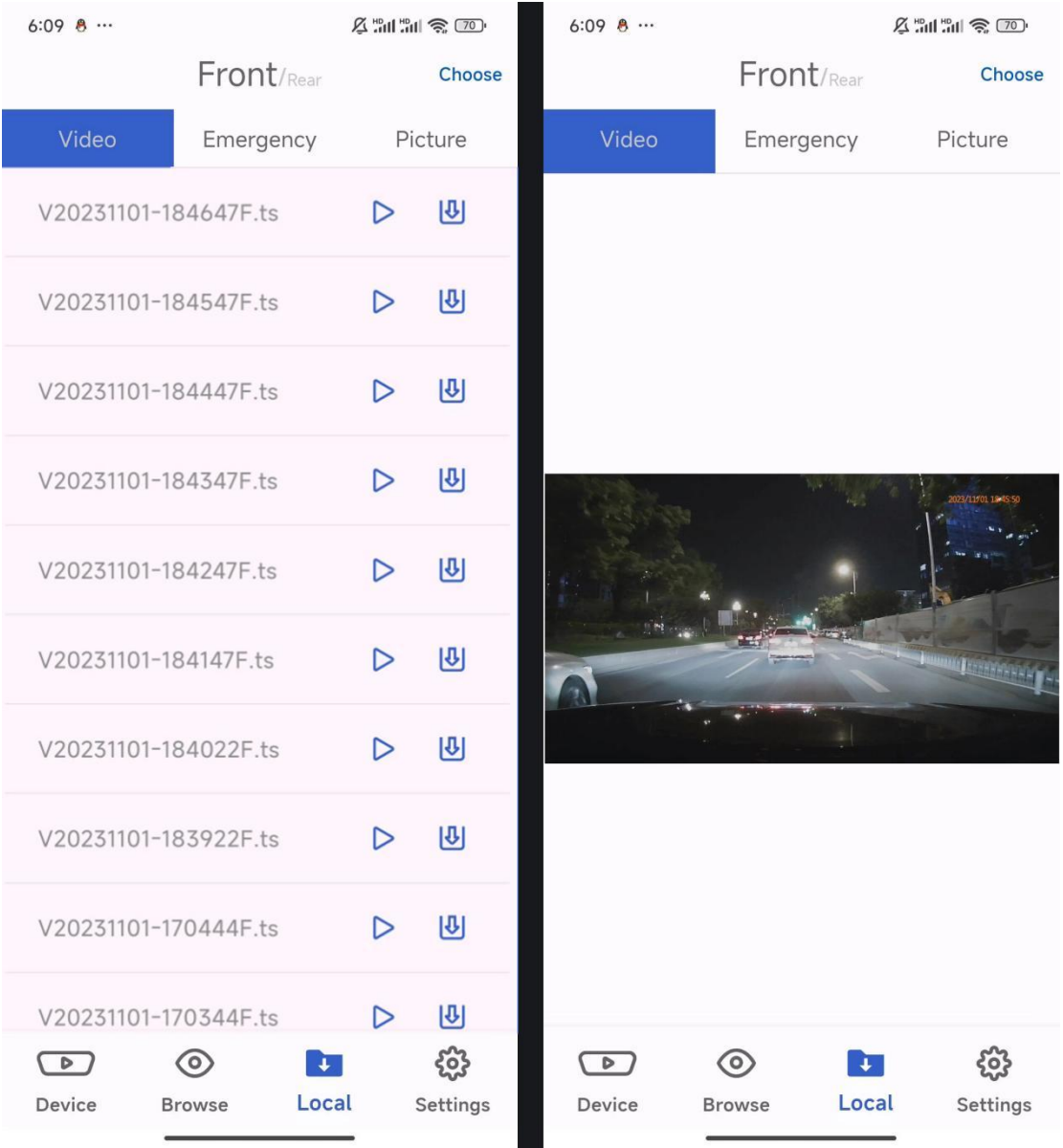


2. tab "Browse", the video/Photoes on the device can be previewed and be downloaded to local photo album.

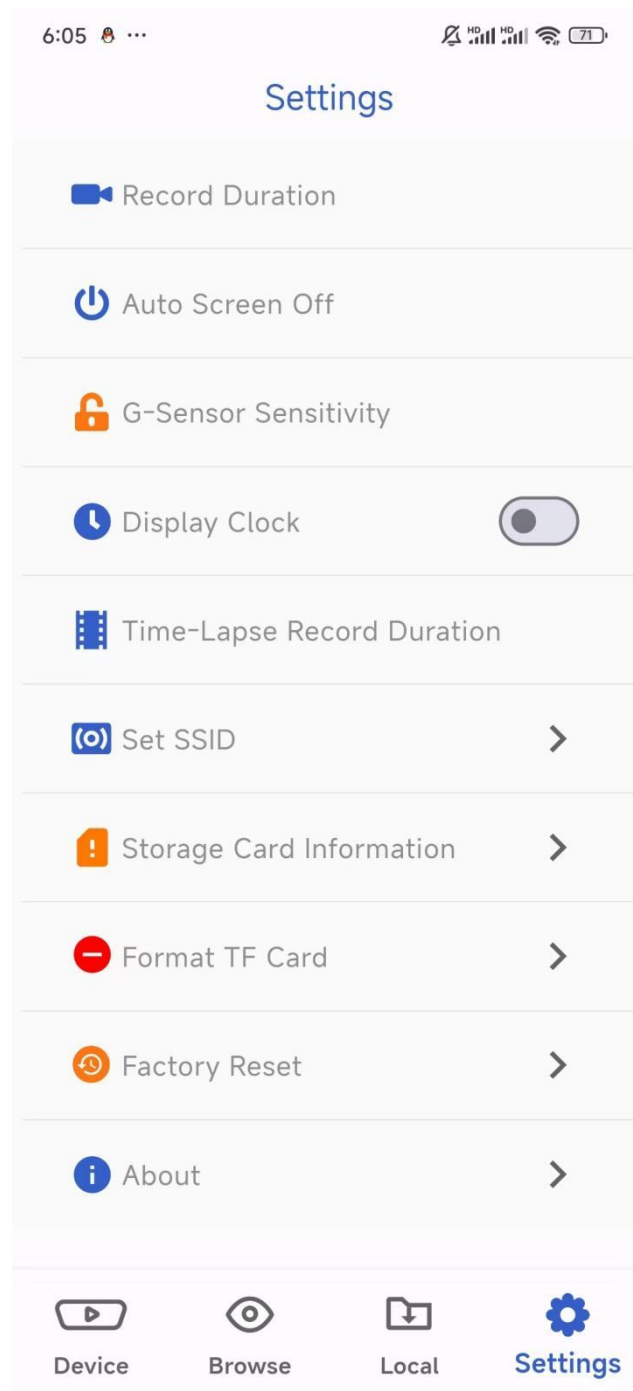




3. tab "Local", the downloaded media file can be browsed,played or deleted.The local media file can also be edited and then be shared via social media.



4. tab "Settings", it shows the settings options, some of the settings of rearview mirror can be modified via mobile application.



## Disclaimer

---

★Do not watch the product screen or perform related operations while driving a car. Watching videos and related actions while driving is legal in some countries.

Prohibited, for the personal safety of you and others, please abide by the national traffic rules when using this product.

★Do not let this product come into contact with liquid, otherwise it may cause electric shock, and may also cause the product damage, smoke and overheating and other dangers.

★All functions of this product (including optional accessory cameras, etc.) are only used as auxiliary functions when you are driving the vehicle, and do not mean

You can be distracted, careless or lose judgment while driving. The resulting safety accident has nothing to do with our company.

★The pictures used in this manual are for reference only, and our company has nothing to do with accidents caused by misunderstanding of pictures or text.

★If this product does not work properly, please consult the manufacturer's customer service department.

**Warning:**

Changes or modifications to this unit not expressly approved by the party responsible for compliance could void the user's authority to operate the equipment.

**NOTE:**

This device complies with part 15 of the FCC Rules. Operation is subject to the following two conditions: (1) This device may not cause harmful interference, and (2) this device must accept any interference received, including interference that may cause undesired operation.

**FCC Statement:**

This equipment has been tested and found to comply with the limits for a Class B digital device, pursuant to part 15 of the FCC Rules. These limits are designed to provide reasonable protection against harmful interference in a residential installation. This equipment generates, uses and can radiate radio frequency energy and, if not installed and used in accordance with the instructions, may cause harmful interference to radio communications. However, there is no guarantee that interference will not occur in a particular installation. If this equipment does cause harmful interference to radio or television reception, which can be determined by turning the equipment off and on, the user is encouraged

to try to correct the interference by one or more of the following measures:

- Reorient or relocate the receiving antenna.
- Increase the separation between the equipment and receiver.
- Connect the equipment into an outlet on a circuit different from that to which the receiver is connected.
- Consult the dealer or an experienced radio/TV technician for help.

The equipment complies with FCC Radiation exposure limit set forth for uncontrolled environment. This equipment should be installed and operated with minimum distance 20cm between the radiator and your body.