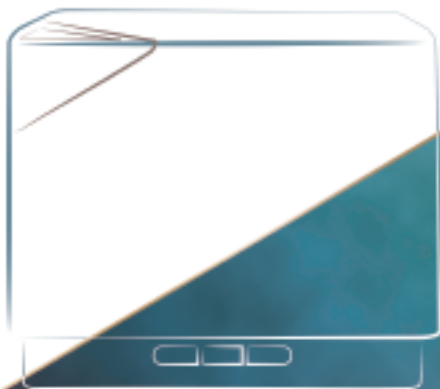


Quick Start Guide

Premium Essential Oil Diffuser

For Tuya App
Echo & Google Home



FOR A BETTER LIFE



ASAKUKI
ASSOCIATES

ASAKUKI Be With You Anytime

ASAKUKI originated from Japan, we focus on designing and creating household items for a better life. The word "ASAKUKI" comes from the Japanese pronunciation (朝の空気-あさのくうき "air in the morning") whose products relate to healthy family life.

Utilizing our experience and success in the industry, ASAKUKI has created a customized and unique project management team, designed to fulfill our customers' requirements with the highest quality household items based on innovation, excellence, and comfort, using the latest technology.

Together with a 100% satisfaction guarantee, we want to let you know that if you need any questions or concerns, please feel free to contact our customer support team by simply emailing us via Amazon message.

Need Help?

Our support team is ready to help you!

Email: support@asakuki.com

Accessories

This manual book applies to all same model diffusers with different colors.



White Wood



Light Wood



Diffuser * 1



User Guide *1



AC Power Adapter *1



Measuring Cup *1



Notice:

AC power adapter and measuring cup are included in the water tank.

Operation Guide

Connecting Preparation

1. Bring your diffuser near the Wi-Fi router, prepare the Wi-Fi name and password as well as an email address (will enter in later), add water in the tank.



2. For first use, please connect the device to power supply directly; For used device, please unplug and reconnect before pairing.



3. Download Tuya Smart from App Store (IOS System) or Google Play (Android System)

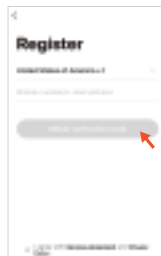
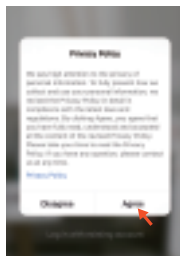
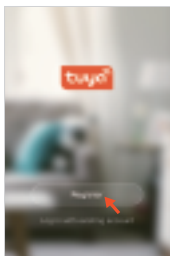


T

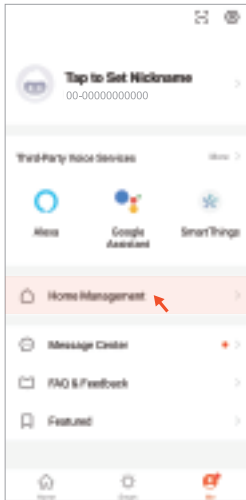


Register and log in TuyaSmart

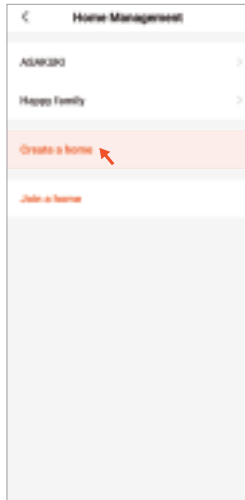
Please register via phone number or email, password must contain 6-20 characters, including letters and numbers.



Home Management



Create a home

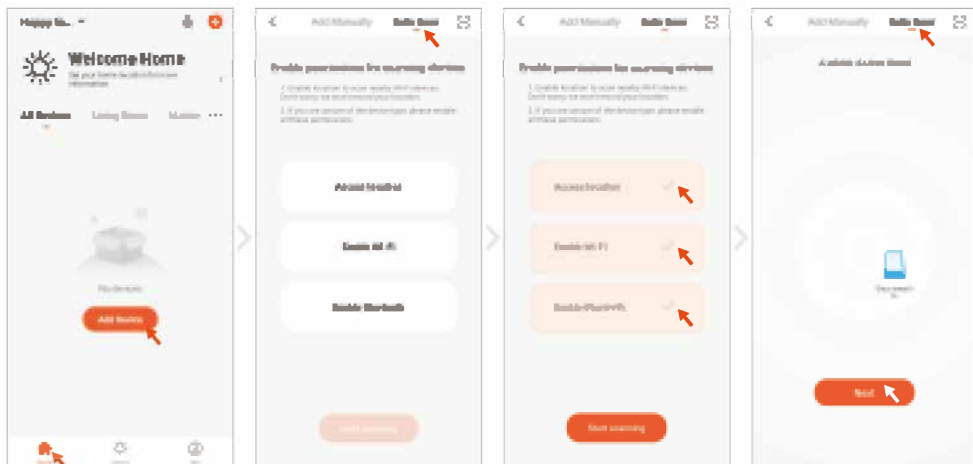


Done



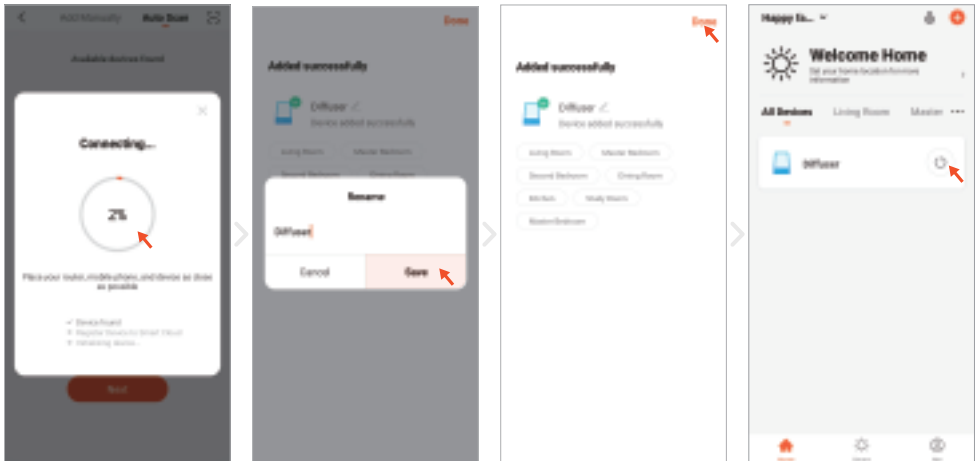
Connection Mode 1: WiFi Connection (Recommended)

Add Device → Choose auto scan mode → Enable permissions(Enable location, Wi-Fi for scanning devices)and start scanning → After finding the device, click 'Next'



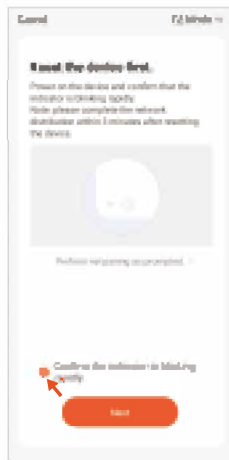
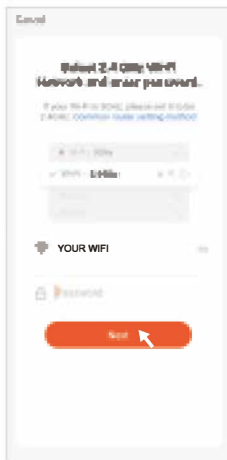
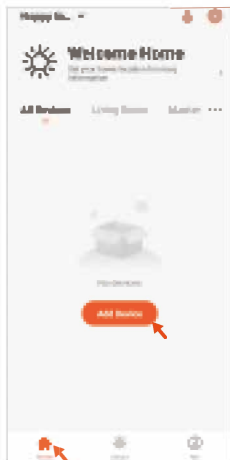
Connecting(Wait till the circle 100%) → Rename(Name your device) → Done.
Now you can control it via APP.

If this is the second time to use, please directly click the button (🔌) to start the device.



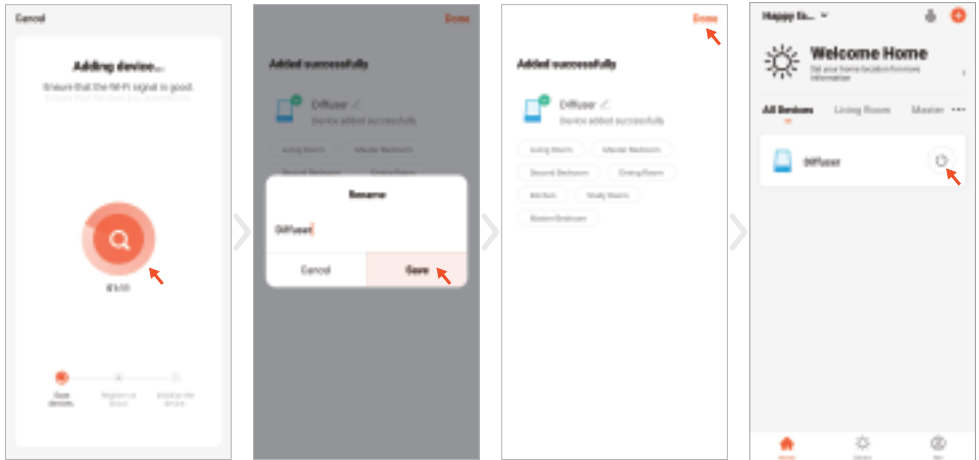
Connection Mode 2: Wifi Connection

Add Device → Add Manually (Choose 'Small Home Application', then choose 'Diffuser'. Please allow Wifi permissions and location access) → Connect to Wifi (Select 2.4GHz Wi-Fi) → Connect to device (Reset the device first, and confirm the indicator is blinking rapidly)

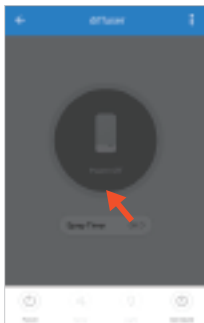


Wait for two minutes countdown → Rename → Done

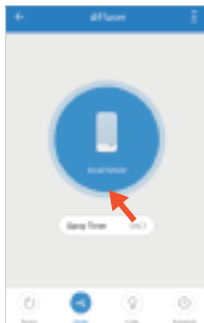
If this is the second to use, please directly click the button  start the device.



APP Control Guide

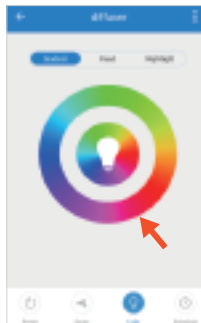


Touch Power to turn on/off both the light and the mist.



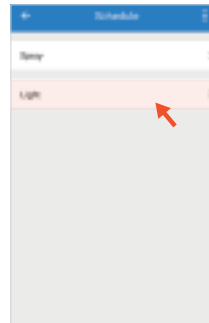
Touch Spray to control mist.

Spray Mode:Weak
Mode/Strong Mode/Off
Spray Timer:
ON/1H/3H/6H



Touch Light to control light.

Gradient:
Light color will cycle automatically.
Fixed:
Fix one color and brightness adjustable.
Nightlight:
Fix at green light and brightness adjustable.



Touch Schedule to set mist or light schedules.

Note & QA

Note

- In order to pairing successfully, it's better to operate near the WIFI router.
- If your home Wi-Fi does not require a password, leave it blank.
- The device only supports 2.4GHz networks. 5GHz network is unavailable.
- If Failed to Add, please unplug the diffuser for 2 minutes and try again.

QA

Q: Router can not access the Internet, dose it support the local area network? Can it directly connect to cellphones hot spots?

A:The Android version supports LAN control, while Apple version currently not. The device must be connected to the Internet via a router to communicate with the mobile server.

Q: Why can not I get a registered SMS verification code? Why can not mobile phone connect device hotspot?

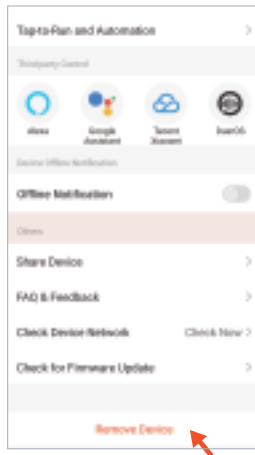
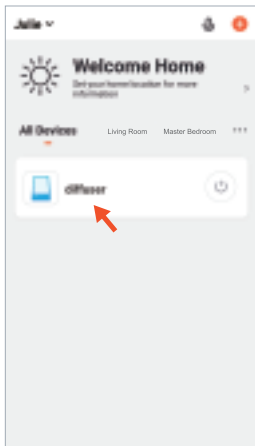
A:Permission is limited. Select 'Allow' when you encounter authorization during installation.

Q: What should I do if I used wifi connection last time and want to use Bluetooth connection this time?

A:If you want to change from wifi connection mode to bluetooth connection mode, or from bluetooth connection mode to wifi connection mode, please remove the device first, and then refer to the corresponding steps page5-8.

Amazon Echo Connection

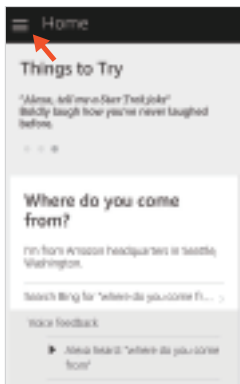
- 1.Download Tuya Smart from App Store (iOS System) or Google Play (Android System),then register TuyaSmart via phone number or email,please refer to page 2-4.
- 2.If the diffuser was added to TuyaSmart before, please follow the steps below to remove the device from TuyaSmart.
- 3.If no device added to TuyaSmart before, please go to next step.



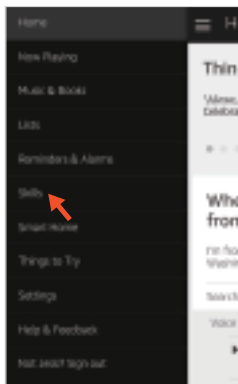
Alexa Connection

1. Connect the Alexa device to the power supply.
2. Download the Alexa APP, log in to the Amazon Alexa account and make sure the Echo/Echo Dot is set up and working properly (If the settings are not complete, please refer to the steps at page 15 'Echo/Echo Dot Operation Guide' or Echo user manual to complete the setup first.)
3. In the Alexa app menu bar, go to 'Skills' → Search TuyaSmart App.

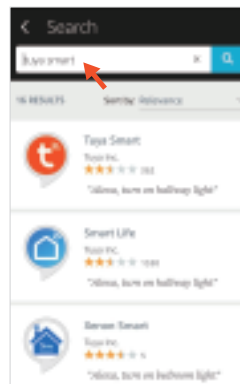
Click menu at the upper left corner.



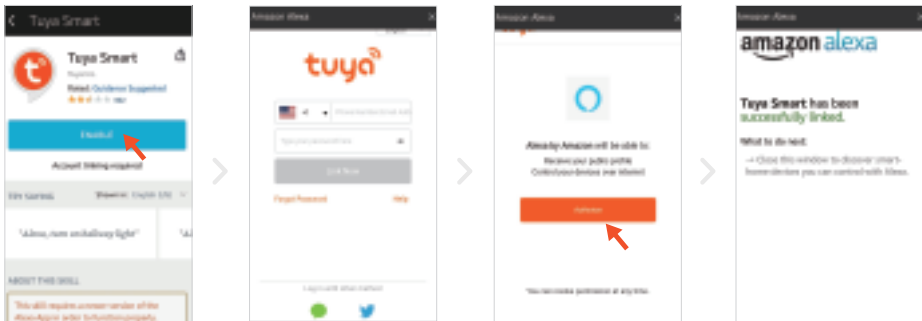
Click Skills to enter skill store.



Search TuyaSmart



4. Click Enable → Enter the TuyaSmart account (If you have not registered TuyaSmartapp, please register first) → Authorize---Successfully.



5.Back to TuyaSmart app → Follow the 'steps to connect with TuyaSmart' on page4 to add device. If the diffuser has been added before, please remove the Device, exit APP and re-login to add.

Notice: Device must be added after Alexa authorized TuyaSmart APP successfully, otherwise it will not find the device.

6.After the circle reach to 100%, Alexa will say: I found a 'diffuser', to control it, say turn on 'diffuser'. It indicating that the connection is successful, you can control the diffuser with Alexa.

Alexa Voice Command

Notice: Please follow the instructions strictly to speak word by word slowly, this could ensure Alexa respond correctly.

Device On/Off Orderings:

Alexa, turn on diffuser/Alexa, turn diffuser on

Alexa, turn off diffuser/Alexa, turn diffuser off

Color Setting:

Alexa, turn the diffuser red(white, green, yellow, blue ,Purple,orange)

Alexa, turn the diffuser to red(white, green, yellow, blue ,Purple,orange)

Alexa, change the diffuser to the color blue (white, green, yellow, red,Purple,orange)

Percentage Setting---LED Brightness Adjustment

Alexa, set diffuser to 10(20,30,40,50...)percent

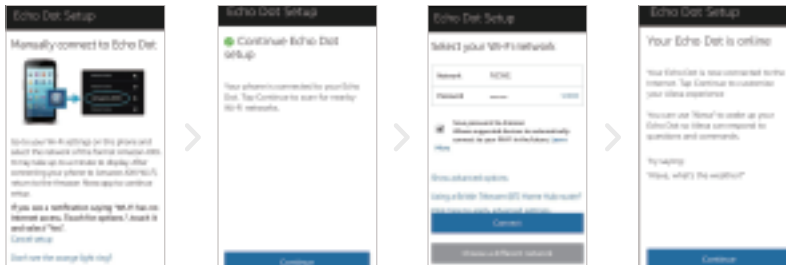
Tips: Because the Amazon Alexa system is partially opened for the TuyaSmart color control, so not all colors can be correctly responded, we are keeping solving it, thanks for your kind understanding!

Echo/Echo Dot Operation Guide

Click 'begin set up' → Echo/Echo --Dot → Continue



Go to Wi-Fi settings on this phone and select the network of the format Amazon-xxx → Return to Amazon Alexa app click 'Continue' → select the Wi-Fi and enter the password → Echo Dot now is connected to the internet.



Manual operation

MIST/WIFI Button

Press once: Turn on the mist.

Press again: Turn off the mist.

HIGH/LOW Button

Short press the HIGH/LOW button, one beep for strong mist and two beeps for weak mist.

LIGHT Button

Press once: Turn on the light and color will cycle automatically.

Press again: Fix at one color.

Press three times: Color will cycle again.

Long press the light button for 2 seconds, turn off the light.



Clean the water tank every 3 days

- Be aware that high humidity levels may encourage the growth of biological organisms in the environment.
- Do not permit the area around the humidifier to become damp or wet. If dampness occurs, turn the output of the oil diffuser down. If the oil diffuser output volume cannot be turned down, use the oil diffuser intermittently. Do not allow absorbent materials, such as carpeting, curtains, drapes, or tablecloths, to become damp.
- Unplug the appliance during filling and cleaning.
- Never leave water in the reservoir when the appliance is not in use.
- Empty and clean the oil diffuser before storage. Clean the oil diffuser before next use.



Warning: Micro-organisms that may be present in the water or in the environment where the appliance is used or stored, can grow in the water reservoir and be blown in the air causing very serious health risks when the water is not renewed and the tank is not cleaned properly every 3 days.

Specifications

Dimensions	Approx 155 x 155 x 133 mm
Weight(Excluding Adapter)	Approx 549g
Power: Input/Output	AC100-240V 50/60Hz DC24V 650mA
Length Of Cord	Approx 170 cm
Power	Approx 14W
Time Mode	ON / 1H / 3H / 6H
Tank Capacity	700ML
LED Colors	7 Bright,7 Dim
Material	PP/ABS
Accessories	AC Adapter And Manual, Measuring Cup
Working Frequency	2.4MHz

Warranty Information

Product Name	Aroma Diffuser
Model	FK07YWF
For your own reference, we strongly recommend that you record your order ID and date of purchase.	
Date of Purchase	
Order ID	



If you discover that your product is defective within the specified warranty period, please contact Customer Support via support@asakuki.com. DO NOT dispose of your product before contacting us.

Please register within 60 days of purchase to extend the 1-year product warranty to a total of 2-year product warranty. To make the customer support process quick and easy, register your product online at asakuki.com/pages/warranty.

Customer Support
Email: support@asakuki.com

*Please have your order invoice and order ID ready before contacting Customer Support

Information on Electrical and Electronic Devices

The following notice is addressed to private end users who use electrical and/or electronic devices.

1. Separate Collection of Old Devices

Electrical and electronic devices that have become waste are referred to as old devices. Owners of old devices must dispose of them through a separate collection system, distinct from general household waste. Old devices, especially, should not be thrown in the household trash but should be placed in special collection and return systems.

2. Batteries and Accumulators, as well as Lamps

Owners of old devices should, as a rule, separate old batteries and accumulators not enclosed by the old device, as well as lamps that can be removed without destruction from the old device, before delivering them to a collection point. This does not apply if the old devices are handed over to public waste disposal authorities and are separated there for the purpose of preparing them for reuse with other old devices.

3. Options for Returning Old Devices

If you own old devices, you can return them for proper disposal through collection points or systems established by public waste disposal authorities. In some cases, it may also be possible to return electrical and electronic devices for the purpose of reusing them. For more information, please contact the respective collection or return point.

4. Data Protection Notice

Old devices often contain sensitive personal data, especially devices related to information and telecommunication technology such as computers and smartphones. Please be aware that, in your own interest, each end user is responsible for deleting data on old devices to be disposed of.

5. Meaning of the "crossed-out trash bin" symbol

The symbol of a crossed-out trash bin regularly depicted on electrical and electronic devices indicates that the respective device should be collected separately from general household waste at the end of its lifespan.



Brand: ASAKUKI

Product Name: Aroma Diffuser

Model Number: FK07YWF

WEEE-Reg. -Nr: DE: DE 41980660 FR: FR031399 05UERI

Manufacturer: Chongqing ChuangHong Dian Zi Shang Wu You Xian GongSi

Address: 1 zhuang 11-3, jin kai da dao 1228 hao, bei bu xin qu, Chongqing, 401120, China

Email: support@asakuki.com

UK REP

UK Responsible Person: JunBright Ltd

Address: 51 Chalton Street London, England, NW1 1HY

Email: yldyx112@outlook.com

EC REP

EU Responsible Person: C&E Connection E-Commerce (DE) GmbH

Address: Zum Linnegraben 20, 65933, Frankfurt am Main, Germany

Email: info@ce-connection.de



MADE IN CHINA



Made In China

This device complies with part 15 of the FCC Rules. Operation is subject to the following two conditions: (1) This device may not cause harmful interference, and (2) this device must accept any interference received, including interference that may cause undesired operation.

Any Changes or modifications not expressly approved by the party responsible for compliance could void the user's authority to operate the equipment.

Note: This equipment has been tested and found to comply with the limits for a Class B digital device, pursuant to part 15 of the FCC Rules. These limits are designed to provide reasonable protection against harmful interference in a residential installation. This equipment generates uses and can radiate radio frequency energy and, if not installed and used in accordance with the instructions, may cause harmful interference to radio communications. However, there is no guarantee that interference will not occur in a particular installation. If this equipment does cause harmful interference to radio or television reception, which can be determined by turning the equipment off and on, the user is encouraged to try to correct the interference by one or more of the following measures:

- Reorient or relocate the receiving antenna.
- Increase the separation between the equipment and receiver.
- Connect the equipment into an outlet on a circuit different from that to which the receiver is connected.
- Consult the dealer or an experienced radio/TV technician for help.
- This equipment complies with FCC radiation exposure limits set forth for an uncontrolled environment. This equipment should be installed and operated with minimum distance 20cm between the radiator & your body.