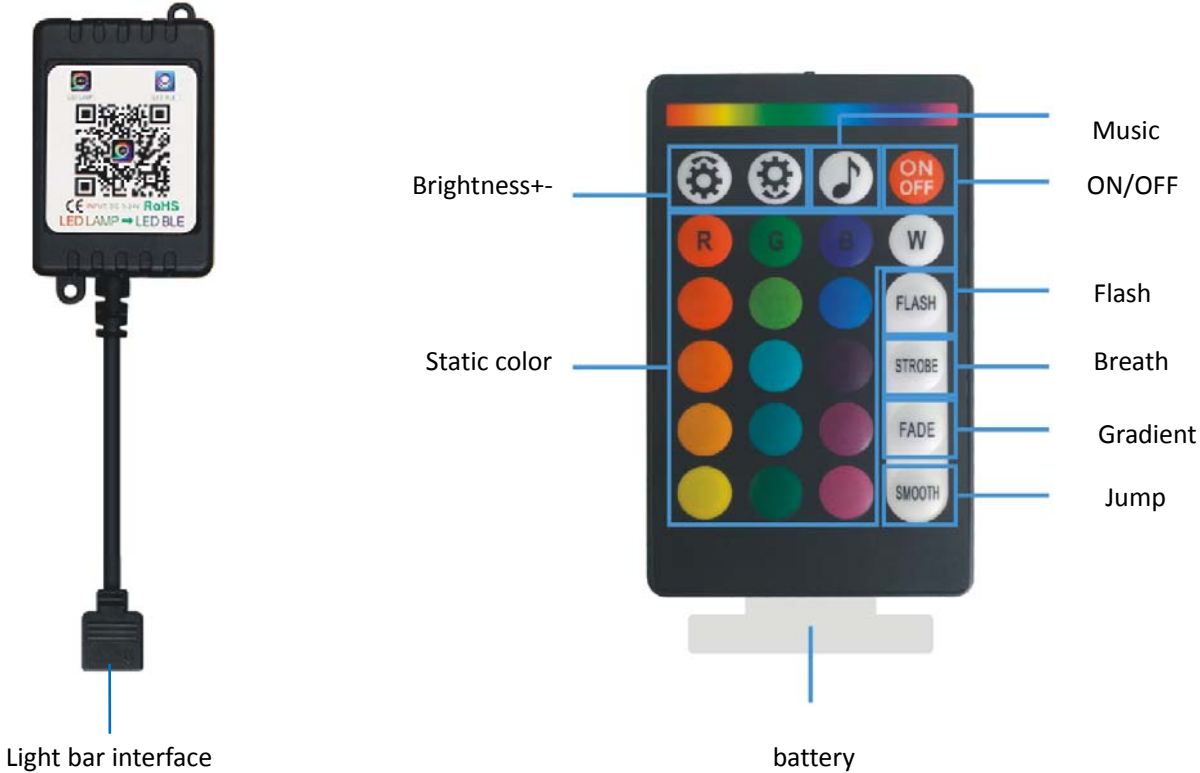


LED Bluetooth Controller Manual


Technical Parameters

Product Name	Bluetooth controller
Support System	Android4.4 and above/iOS10.0 and above
Signal Mode	Bluetooth 4.0
Remote Control	24key

Product description



Function Description:

16 kinds of static colors:	
Dynamic mode 22 kinds:	Three-color jump, three-color jump, three-color gradient, seven color gradient, red gradient, green gradient, blue gradient, yellow gradient, blue gradient, purple gradient, white gradient, red and green gradient, red and blue gradient, Color strobe, red strobe, green strobe, blue strobe, yellow strobe, cyan strobe, purple strobe, white strobe;
4 music modes:	Music jumps, music breathing, music strobos, music gradients (music mode down sensitivity)
Speed / Brightness:	Dynamic mode adjustment speed; Static mode brightness adjustment;
ON / OFF:	Turn on the light, turn off the light;
Proofread Code:	Power on the 3S by pressing the switch key on the code, the code only allows remote control of the code; the controller on the code again on the code decoding, the decoder supports multiple remote control.

Download App Software

Please search LED LAMP in major Appcenters, or scan below QR code.

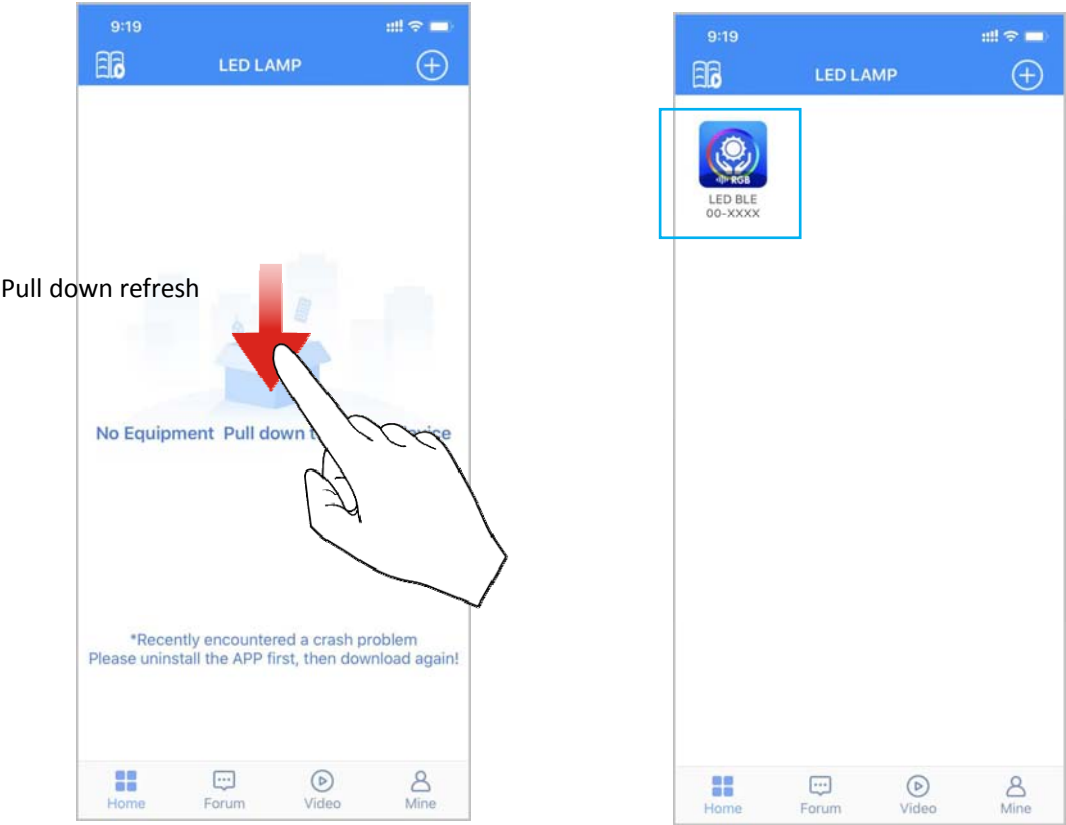



After installing the APP, turn on the Bluetooth function of the phone, then power on the light, open the APP, allow the prompt to locate and enable, enter the APP homepage interface, manually pull down to refresh the interface, select the device icon, and enter the lighting control interface.

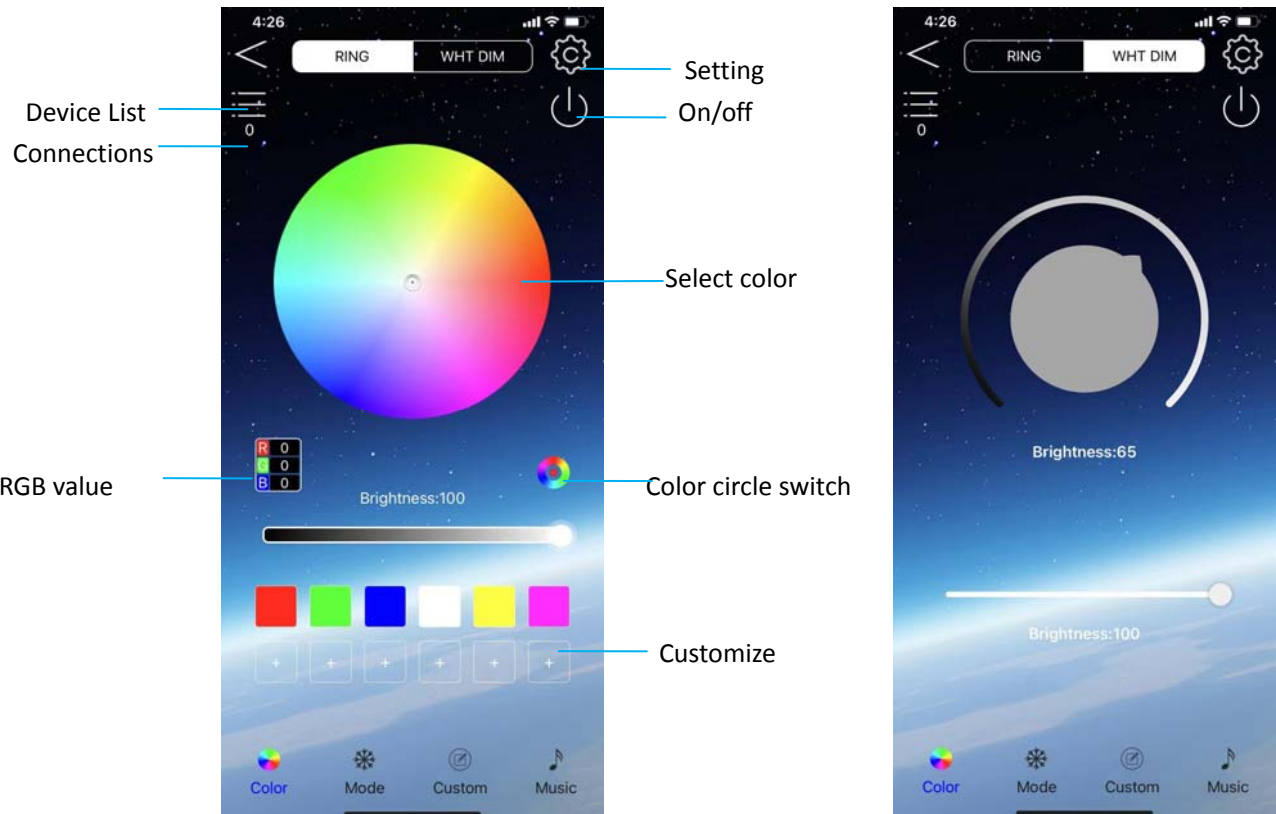
- ☆First of all, you need to turn on the Bluetooth function of your mobile phone.
- ☆Android phone users, also turn on the location function and allow permissions.

Instructions

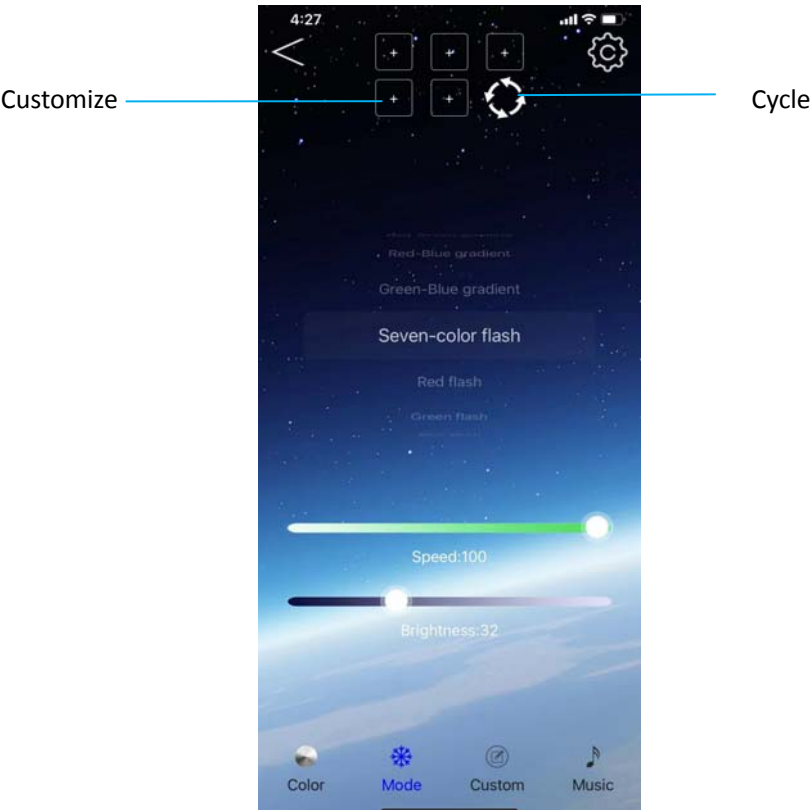
On the home page, manually pull down to refresh, the APP will automatically search for nearby devices, and click the "LED BLE 00-XXXX" device to enter the lighting control interface.



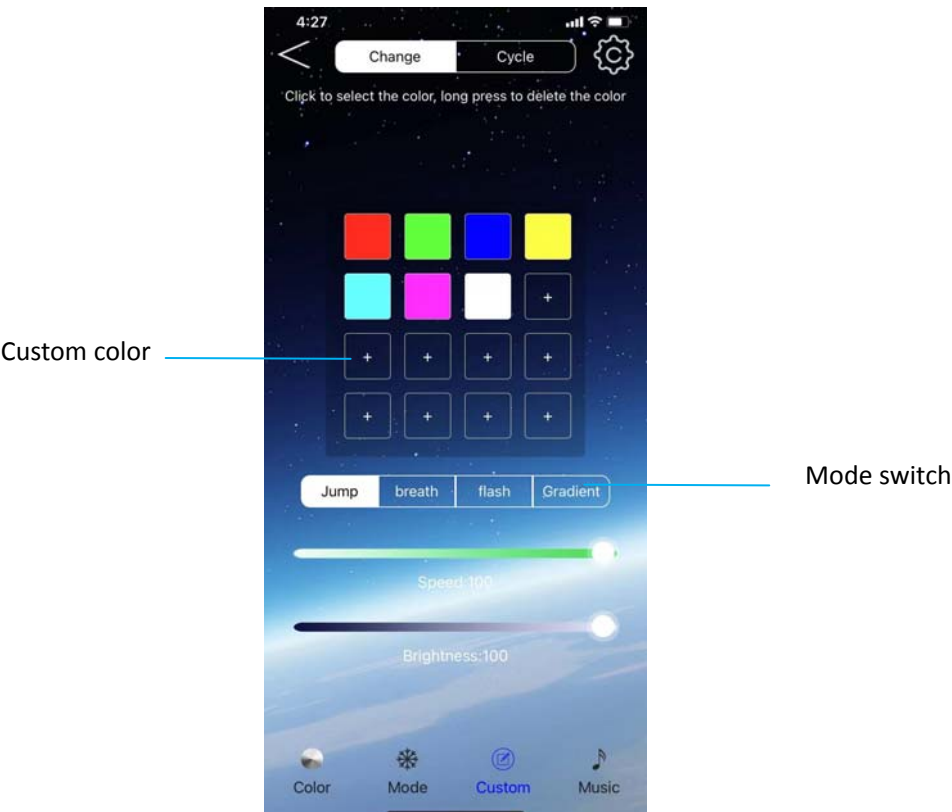
1.  Color: color circle and single color. You can adjust the color at will, customize the color, and adjust the brightness of the white light by dragging the ring.



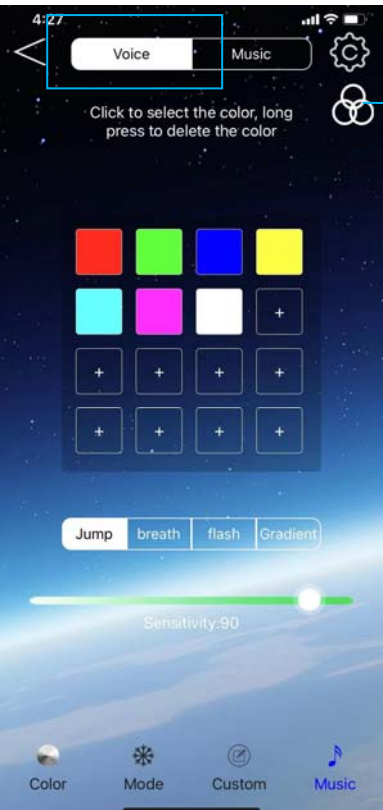
2、❄️ Mode: Select one of the modes to add a custom mode.



3、🎨 Custom: You can customize the color, and then select the mode



4、🎵 Music: There are voice control and music, and the voice control can set the color, mode, sensitivity, and change the effect of the light. Music can be changed by playing songs on the phone.



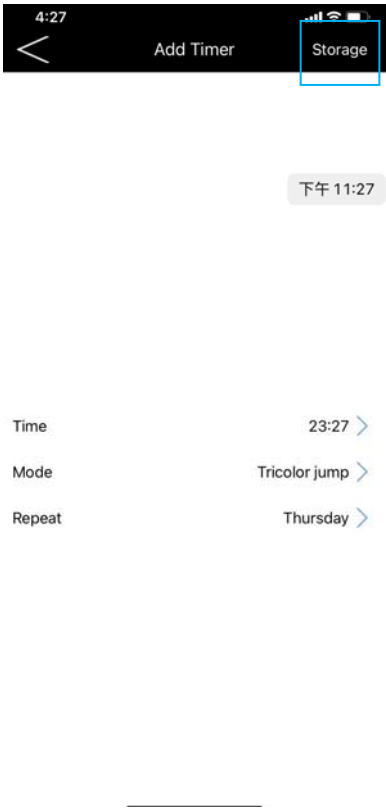
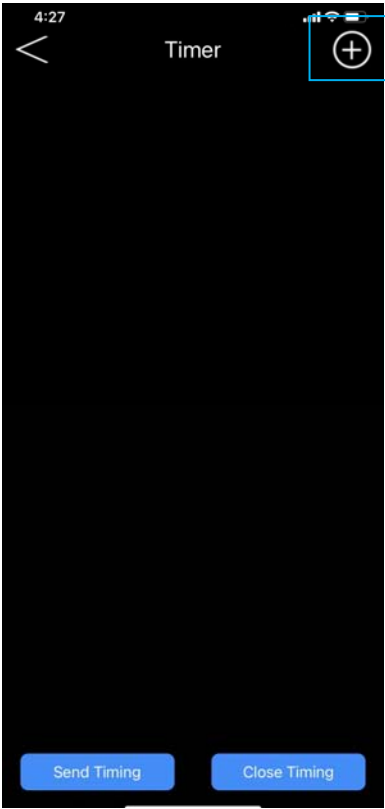
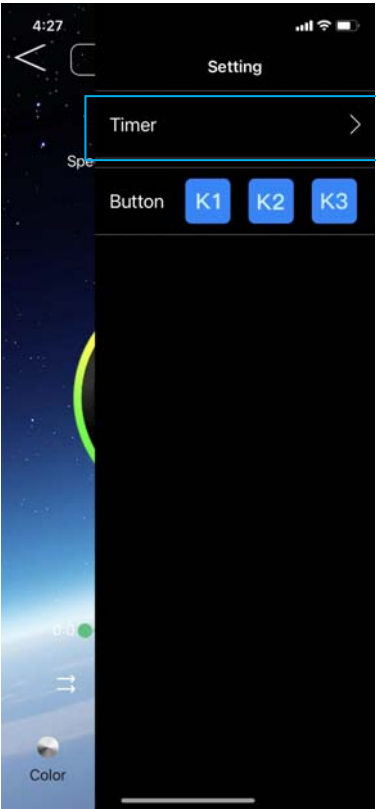
Color change



Mode switching

Song list

5. ⚙️ Settings: Timing settings, click the "Add" button at the top right, after setting, click "Save", and then "Send Timing".



Warning:

This device complies with Part 15 of the FCC Rules. Operation is subject to the following two conditions: (1) this device may not cause harmful interference, and (2) this device must accept any interference received, including interference that may cause undesired operation.

Changes or modifications not expressly approved by the party responsible for compliance could void the user's authority to operate the equipment.

NOTE: This equipment has been tested and found to comply with the limits for a Class B digital device, pursuant to Part 15 of the FCC Rules. These limits are designed to provide reasonable protection against harmful interference in a residential installation. This equipment generates uses and can radiate radio frequency energy and, if not installed and used in accordance with the instructions, may cause harmful interference to radio communications. However, there is no guarantee that interference will not occur in a particular installation. If this equipment does cause harmful interference to radio or television reception, which can be determined by turning the equipment off and on, the user is encouraged to try to correct the interference by one or more of the following measures:

- Reorient or relocate the receiving antenna.
- Increase the separation between the equipment and receiver.
- Connect the equipment into an outlet on a circuit different from that to which the receiver is connected.
- Consult the dealer or an experienced radio/TV technician for help.

RF Exposure Statement

To maintain compliance with FCC's RF Exposure guidelines, This equipment should be installed and operated with minimum distance of 20cm the radiator your body. This device and its antenna(s) must not be co-located or operation in conjunction with any other antenna or transmitter