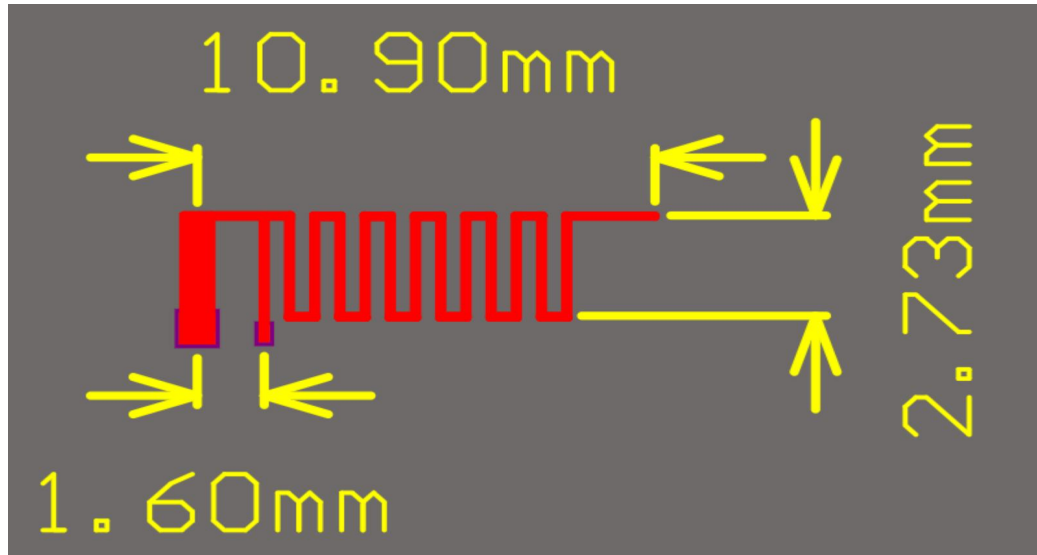


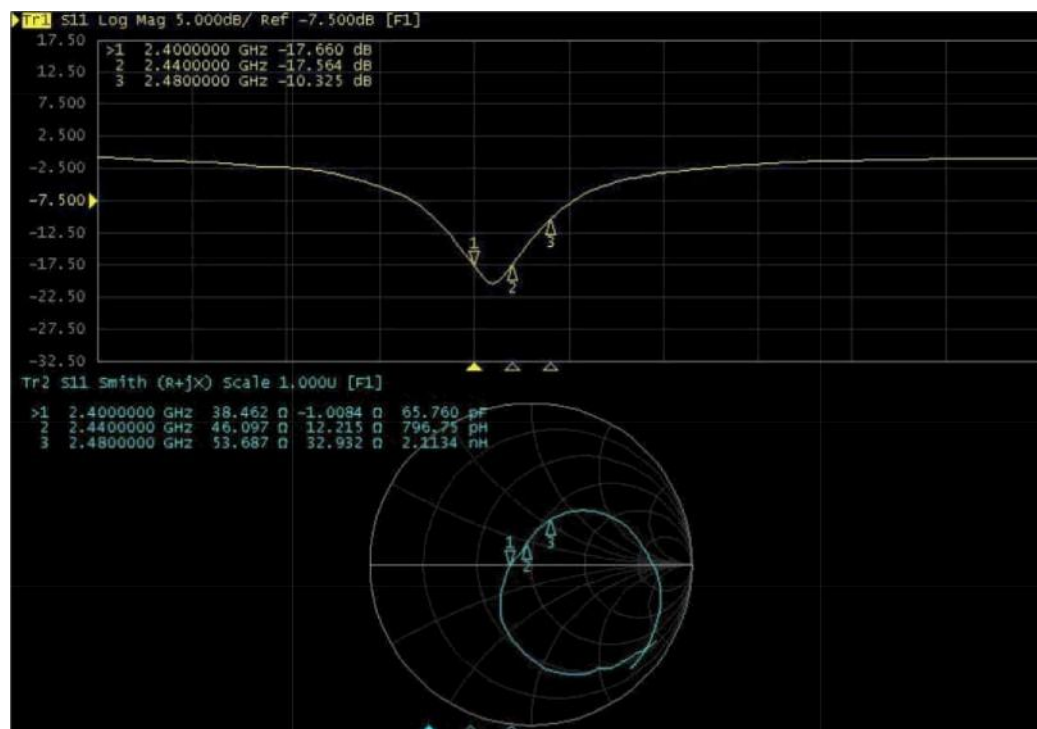
Product specification

This Wiggle antenna is used in normal module with whole layout board which size is 2.73mm*10.9mm and thickness is 0.6mm (FR4)



3- 1 Normal Module wiggle Antenna

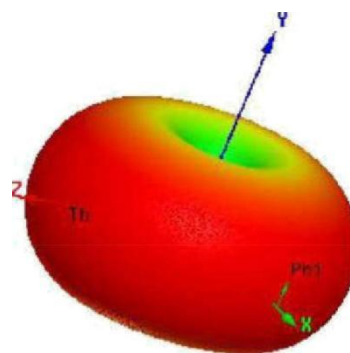
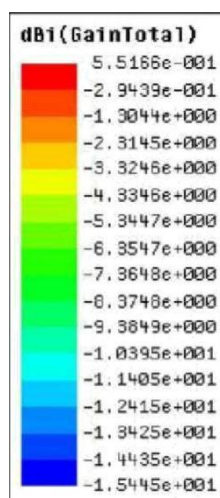
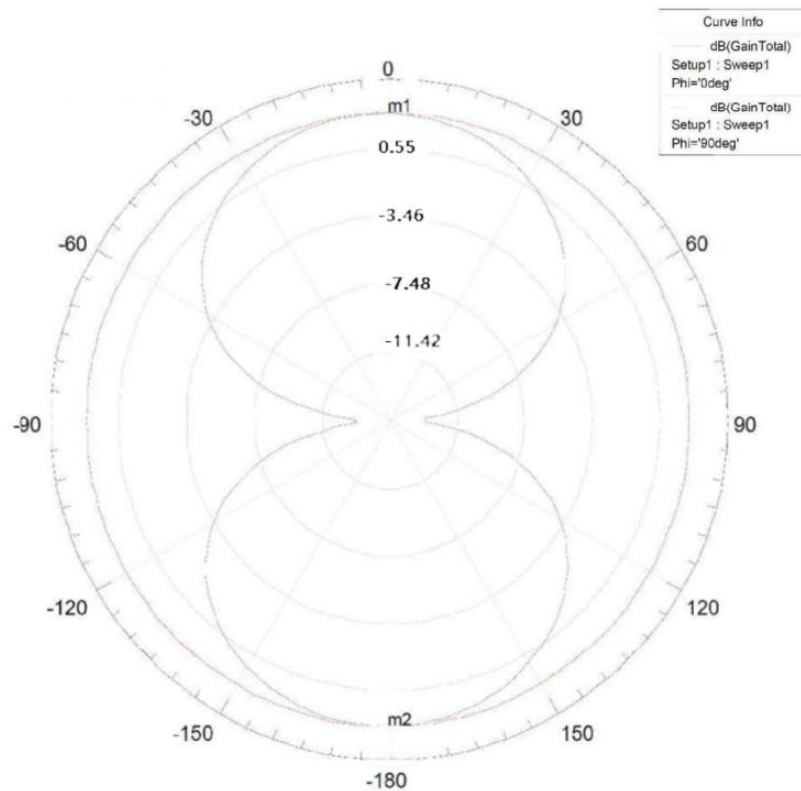
The performance of S11 as blow show and the working frequency band cover 2.4G ISM(2.40~2.48G) .



3-2 Normal Module Wiggle S11 performance

The gain of this antenna 2D and 3D as blow show and the maximum gain is about 0.55 dbi, Test Frequency point 2.44G

Name	Theta	Ang	Mag
m1	0.0000	0.0000	-3.29
m2	180.0000	180.0000	-3.31



3—3 Normal Module Wiggle gain

Frequency vs antenna gain table:

Mark	Frequency	Antenna Gain
1	2400MHZ	-0.92dbi
2	2440MHZ	0.55dbi
3	2480MHZ	-0.75dbi