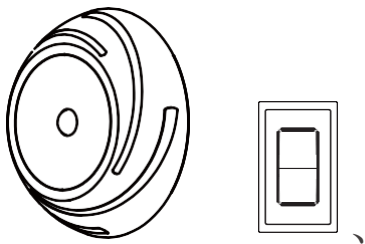


5UKAIELEC

Wireless Switch Ceiling Light



If you have any problems or questions, please
contact our Consumer Care.

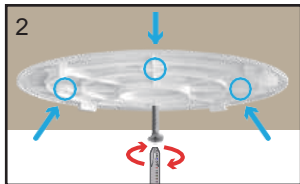
WARNING!

To prevent serious injury, including temporary or permanent loss of sight do not stare into the light, shine light into eyes or focus the beam using an additional lens. Keep away from infants and toddlers as this product contains small parts.

This product is not a toy! Use this light only as it is intended. Inspect before every use. Do not use if parts are damaged, loose or missing.

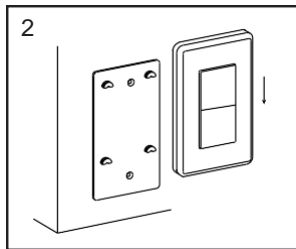
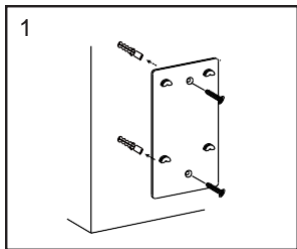
MOUNT THE CEILING LIGHT

1. Turn the mounting plate on the back of the unit counterclockwise and detach it from the light.
2. Position the flat side of the mounting plate against the desired surface. Use a pencil to mark four points inside the raised screw holes. Insert screws and secure them into the mounting plate with a screwdriver. If mounting to drywall, make sure to use the provided anchors.
3. Align the light over the mounting plate, ensuring the locking tab is in the center of the slot on the back edge of the light. Twist the light clockwise until it securely locks in place.



MOUNT THE WALL SWITCH

1. Install the mounting plate using included screws through the mounting plate. Do not overtighten.
2. Mount the wall switch onto the mounting plate by gently sliding it downward to secure it in place.



OPERATION

Motion Activated Mode

1. Turn the switch on the back of the light to "AUTO".
2. The light activates upon detecting motion and automatically turns off after 20 seconds of no motion.

Remote Control Mode

1. Turn the switch on the back of the light to "ON".
2. Press up on the switch to turn the light ON, press down to turn the light OFF.
3. Press and hold the upper of the switch to brighten the light, press and hold the lower of the switch to dim the light.

NOTE: There is a 60min. timeout feature that will turn the light OFF to conserve battery life. The wall switch remote will control the light within a 50-foot range.

CEILING LIGHT BATTERY REPLACEMENT

1. Rotate the light counterclockwise and detach it from the mounting plate. Pull back on both latches of the battery compartment cover and lift it off.
2. Take out the depleted batteries and substitute them with 4 D alkaline batteries, adhering to the diagram inside for proper placement. Reattach the cover and snap it securely into place. Proceed to step 3 in the installation section to re-mount the light onto the mounting plate.



Caution:

Please replace all batteries simultaneously. Avoid installing batteries backwards, charging, or exposing them to fire. Refrain from mixing old and new batteries. Additionally, do not mix different types of batteries such as alkaline, standard (carbon-zinc), or rechargeable (ni-cad, ni-mh, etc.), as this may lead to leakage or explosions. Properly recycle or dispose of old or discharged batteries according to local regulations.

WALL SWITCH BATTERY REPLACEMENT

1. To replace the switch's battery, slide and remove the battery door.
2. Replace with one A23 battery, noting polarity.
3. Replace the battery door and ensure it is firmly closed.

SPECIFICATIONS

- Model No.: LQ-GY047-R
- Battery: 4*D-cell (Not Included)
- Remote Range: 50ft (Free Area)
- Frequency: 433.92 MHz
- Remote Battery: 12V 23A (Included)
- Detect Distance: 26ft
- Detect Time: 20s
- Lumens: 300lm
- CCT: 6500K

PACKAGE CONTENTS

Ceiling Light	x	1
Screw & Anchor	x	6
Wall Switch	x	1
User Manual	x	1

One Year Limited Warranty

Suraielec warrants to the purchaser of this product, for the period of one (1) year following the date on which Purchaser purchases the product, that the product shall be free of defects in design, assembly, material, or workmanship.

If you have any problems or questions, please contact our Consumer Care by the E-mail: support@suraielec.com

FCC Warning Statement:

This equipment has been tested and found to comply with the limits for a Class B digital device, pursuant to part 15 of the FCC Rules. These limits are designed to provide reasonable protection against harmful interference in a residential installation. This equipment

generates, uses and can radiate radio frequency energy and, if not installed and used in accordance with the instructions, may cause harmful interference to radio communications. However, there is no guarantee that interference will not occur in a particular installation. If this equipment does cause harmful interference to radio or television reception, which can be determined by turning the equipment off and on, the user is encouraged to try to correct the interference by one or more of the following measures:

- Reorient or relocate the receiving antenna.
- Increase the separation between the equipment and receiver.
- Connect the equipment into an outlet on a circuit different from that to which the receiver is connected.
- Consult the dealer or an experienced radio/TV technician for help.

Caution: Any changes or modifications to this device not explicitly approved by manufacturer could void your authority to operate this equipment.

This device complies with part 15 of the FCC Rules. Operation is subject to the following two conditions: (1) This device may not cause harmful interference, and (2) this device must accept any interference received, including interference that may cause undesired operation.

The device has been evaluated to meet general RF exposure requirement.