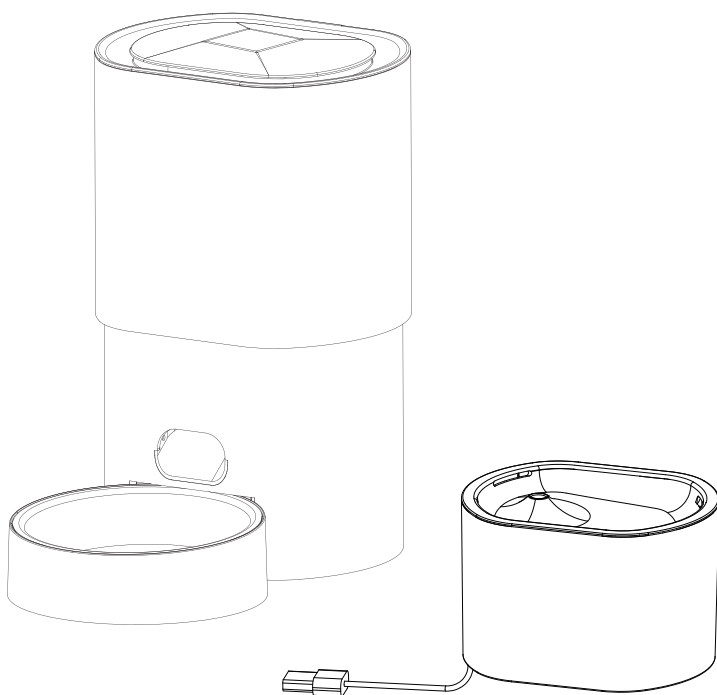


Automatic Pet Feeder -User Guide

(Regular Version)



Please read the entire user manual before getting started

1. Important Safety Information



This is a safety alert symbol used to alert you to potential personal injury hazards. Please follow all safety information following this symbol to avoid potential injury or death.

Warning: Indicates a potentially hazardous situation that, if not avoided, could result in injury or death.

Caution: Now used to address safety issues unrelated to personal injury.



Warning

- The base should not be submerged in water under any circumstances, as this can cause electric shock and damage electronic components.
- As the feeder is automatic, do not place anything on top of the pet feeder. Please keep it clean and dispose of all packaging materials properly. Some items may be packaged in plastic bags, which could pose a suffocation hazard. Keep away from children and pets.
- Do not allow children to play inside or around the pet feeder. If children need to use or be near the feeder, close supervision is necessary.
- This pet feeder is only suitable for cats and small dogs.
- Do not use this pet feeder for small cats, small dogs, adult cats, and dogs that cannot access the food tray or have physical disabilities.
- Whether used indoors or outdoors, regular checks should be performed to ensure the feeder's dispensing performance.
- This feeder is only suitable for dry food. Do not use wet, canned, or moist food.
- The feeder should be placed on a level surface during use.
- Before leaving for an extended period, be sure to replace the batteries with new ones.
- Do not place any foreign objects inside the pet feeder.
- Do not disassemble the pet feeder except for the parts indicated in the operation.
- Use only manufacturer-recommended or sold accessories.
- Do not unplug by pulling the power cord. Always unplug by grasping the plug, not the cord.
- Do not operate any equipment with damaged power cords or plugs. If the device is faulty or damaged, contact customer service.
- Unplug before disassembling or cleaning the feeder when not in use.
- Do not use the feeder for any other purpose.
- If using a power cord, do not immerse it in water or other liquids to avoid electric shock.
- To reduce the risk of electric shock, do not place or store the appliance where it can fall into or be pulled into a tub or sink.
- If the power plug gets wet, turn off the wall outlet power and do not attempt to unplug it.
- After installation, check the feeder. If there is water on the power cord, do not plug it in.
- For safety, place the power cord away from pedestrian traffic.

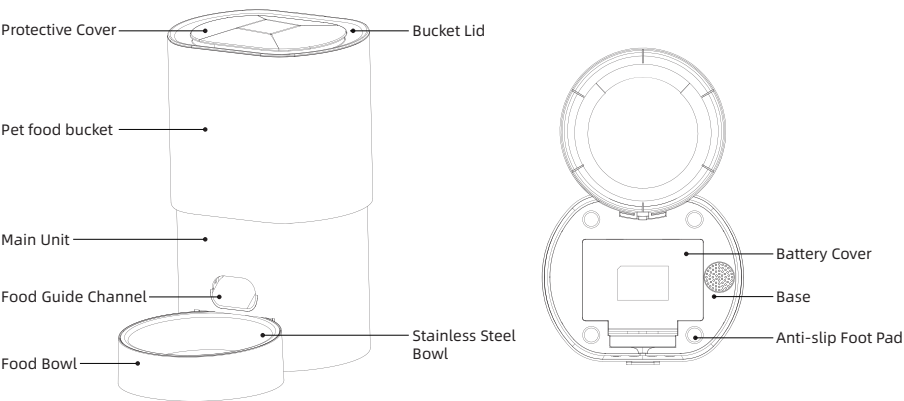


Do not allow pets to chew or swallow any part. If concerned about the power cord, please purchase a power cord conduit (a type of rigid plastic protector) from a hardware store to protect the power cord.

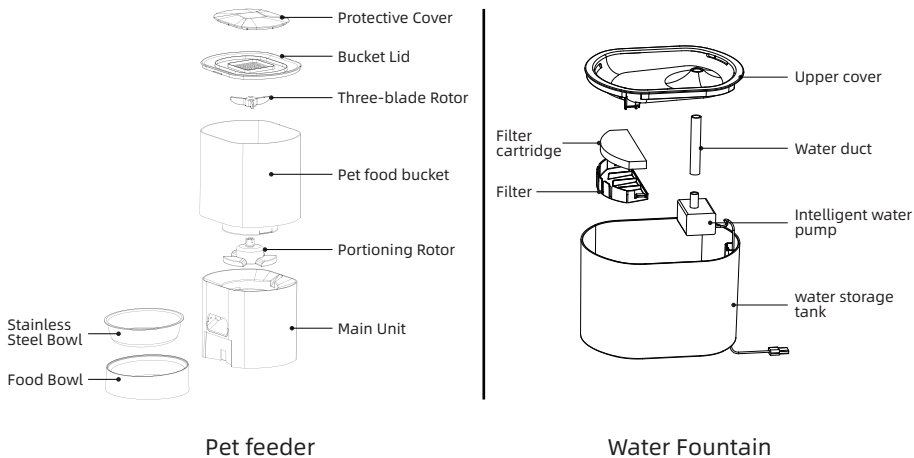
2.Product components list

- 1. Automatic feeder x1
- 2. Stainless steel bowl x1
- 3.Desiccant x1
- 4.User manual x1
- 5.Chew-resistant power cord x1
- 6.Water Fountain x1

3.Product Components Introduction

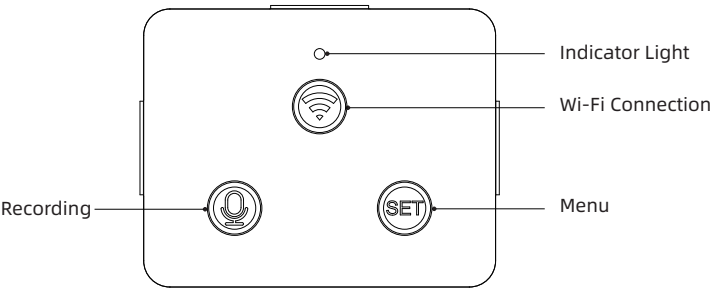


4.Product Disassembly and Assembly Instructions



5.Product use

(1) Operating Interface Introduction



(2) Product Settings

① Pre-use Inspection

Connect the power supply and the indicator light is on:

- 1、Blue light blinks to connect to APP;
- 2、The blue light is always on, indicating that there is an account binding, you need to unbind the original phone before connecting the new phone;

② APP connection steps are as follows

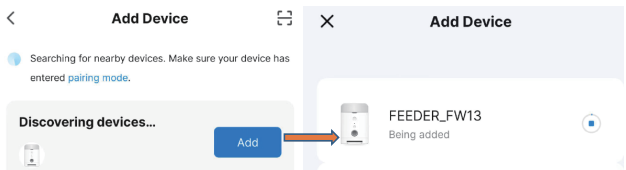
1: Download the Smart Life APP



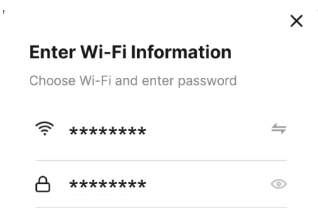
2: Turn on your phone's Bluetooth



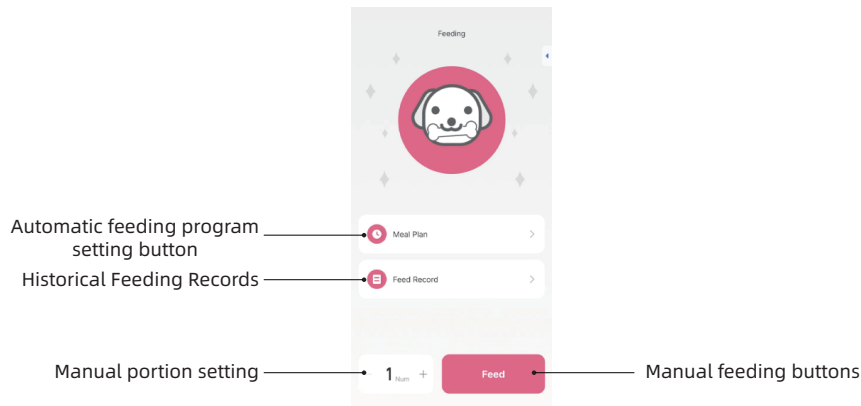
3: Open the Smart Life APP, the feeder device will be found automatically, click the add button



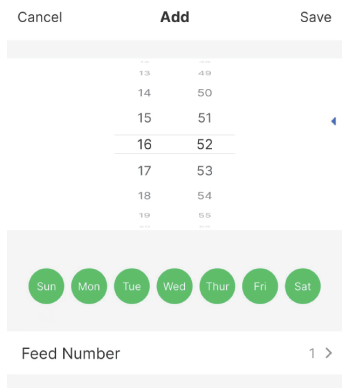
4: Enter your network password and click "Next"



5: Enter the operation page of "Smart Life" APP



6: Click "Feeding Plan" to enter the plan setting page



③ Other operations

Manual feeding

Press and hold the " SET " button for 3 seconds to execute manual feeding once, one serving at a time, about 10 grams;

(3) Placement of the Device

- 1.The device should be placed horizontally and stably, and should not be tilted, shaken, or overturned.
- 2.The device should be placed against the wall in a dry indoor area, preferably avoiding direct sunlight or damp areas. It should not be placed in a high location to prevent damage from falling.
- 3.Please ensure that there are no obstructions on or around the food tray of the device to prevent hindering normal pet feeding or causing damage to the device.

(4) Device Cleaning and Maintenance

1.Cleaning the Grain Storage Bin

- a. First, remove the three-leaf rotor and then vertically take out the grain storage bin.
- b. Lift out the portion control rotor.
- c. Rinse the grain storage bin, three-leaf rotor, and portion control rotor with clean water. Do not use metal kitchen utensils or abrasive cleaning materials to avoid damaging the product surface and affecting the sealing.
- d. After cleaning, use a soft dry cloth to wipe all parts clean and place them in a well-ventilated and shaded area to dry completely.

2.Installation of the Grain Storage Bin

- a. Insert the portion control rotor into the portion control bin.
- b. Invert the grain storage bin, and place the three-leaf rotor into the bottom of the grain storage bin.

3.Cleaning the Food Tray

Wash the food tray with clean water and then completely dry it with a soft dry cloth.

4.Cleaning the Device Body

Use a small amount of water on a soft dry cloth to wipe the inside of the device, and then dry the cloth thoroughly. Do not wash the device with water or use a wet cloth that has not been thoroughly dried.

5.Replacing the Desiccant

Open the desiccant box on the top cover and replace the desiccant with a new one. It is recommended to replace the desiccant once a month.

6.Replacing Dry Batteries

Unplug the power plug, open the bottom battery cover, and replace the three size D dry batteries.

※Notes

- 1.Before cleaning, unplug the power plug and remove the batteries.
- 2.The base should not be immersed in water, as this may cause short circuit damage.
- 3.After cleaning the device, do not put back components that are not completely dry to prevent the pet food from getting damp.
- 4.Pet food should not be left for too long to avoid exceeding the shelf life (refer to the pet food packaging for details). Old pet food should not be mixed with fresh pet food to avoid contaminating the fresh pet food.
- 5.Regular cleaning and maintenance of the device helps to extend its service life and improve the freshness of the pet food.

6.Basic parameter

Item	Parameter	
Product Name	Pet feeder	Water Fountain
Product Dimensions	283x180x298mm	198x168x128mm
Package Dimensions	200x175x255mm	
Material	ABS、Stainless Steel	ABS
Net Weight	1.15Kg	0.4Kg
Pet Food Type	Dry food (particle size: 5~12mm)	/
Pet Type	Cat/small dog	Cat/small dog
Capacity	3L	3.5L
Power Source	Adapter DC5V1A / Three No. 1 Alkaline Dry Batteries	Adapter DC5V1A
Rated Voltage	DC 5V	DC 5V
Rated Power	5W	5W
Operating Temperature	0°C~40°C	5°C~50°C
Protection Ratin	IP42	/
Indicator light	/	Optional
Low water level protection	/	Optional

7.Abnormal Status Reminder

Pet feeder

“E1--” :Food blockage

“E4--” :Motor sensor malfunction

“E5:LP” : Low battery power

Water feeder

Blue light on - Normal water level

Red light on - Low water level

8.Consumables and Accessories

Pet feeder

- 1.Three-leaf wheel and food separation rotor components (recommended to be replaced once a year)
- 2.Desiccant (replace once a month)
- 3.Anti-bite power cord
- 4.Stainless steel bowl

Water feeder

- 1.Water pump (recommended to be cleaned weekly)
- 2.Filter cotton (recommended to be replaced monthly)
- 3.Water guide pipe

Wish you a pleasant user experience!

FCC Warning Statement: Changes or modifications to this unit not expressly approved by the party responsible for compliance could void the user's authority to operate the equipment. This equipment has been tested and found to comply with the limits for a Class B digital device, pursuant to Part 15 of the FCC Rules. These limits are designed to provide reasonable protection against harmful interference in a residential installation. This equipment generates, uses and can radiate radio frequency energy and, if not installed and used in accordance with the instructions, may cause harmful interference to radio communications. However, there is no guarantee that interference will not occur in a particular installation. If this equipment does cause harmful interference to radio or television reception, which can be determined by turning the equipment off and on, the user is encouraged to try to correct the interference by one or more of the following measures:

- Reorient or relocate the receiving antenna.
- Increase the separation between the equipment and receiver.
- Connect the equipment into an outlet on a circuit different from that to which the receiver is connected.
- Consult the dealer or an experienced radio/TV technician for help.

This device complies with Part 15 of the FCC Rules. Operation is subject to the following two conditions: (1) this device may not cause harmful interference, and (2) this device must accept any interference received, including interference that may cause undesired operation.

FCC Radiation Exposure Statement

The antennas used for this transmitter must be installed to provide a separation distance of at least 20 cm from all persons and must not be co-located for operating in conjunction with any other antenna or transmitter.