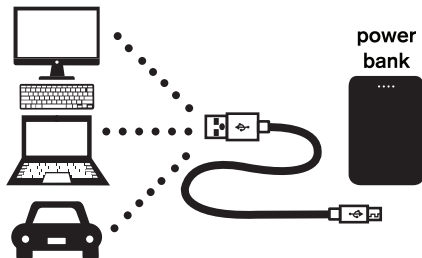




HEATED VESTS AND JACKETS

user manual

Charge the power bank fully before use.



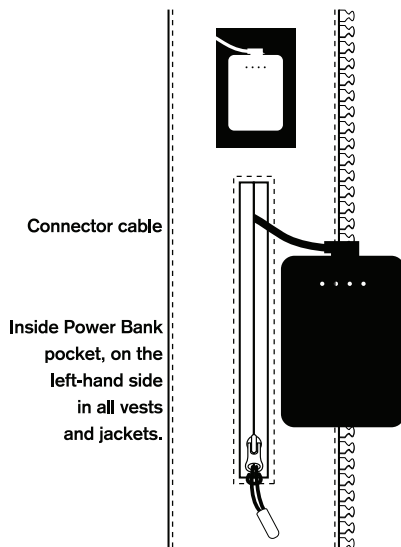
Plug the small micro USB connector into the power bank and the USB connector into any USB port such as a laptop, desktop, car or USB adapter. (The USB power adapter is not included.) The LED lights on the power bank will start pulsing, indicating the power bank is being charged. When all 4 LEDs stop flashing, the power bank is fully charged and ready to use.

Power indicator on the power bank

●	● ●	● ● ●	● ● ● ●
25 %	50 %	75 %	100 %

To check the power level press the power button on the power bank. From empty, the power bank will take roughly 4 to 5 hours to fully charge.

Look for the power bank pocket inside the garment. Plug the pocket connector cable from the inside pocket to the power bank micro USB socket. Slide the power bank into the pocket. The LED on the power bank lights up indicating the connection is made.



Power / Heat level control switch

The controller operates by pressing it and can be used while wearing Mitts or Gloves. A long press turns the unit on and off. The 3 heat settings are selected by pressing the Switch one, two or three times, as illustrated below.



The power bank shuts off when not in use.

Care instructions

Before washing, make sure to unplug and remove the power bank. Do not twist the garment to prevent damage to the cable.

MACHINE WASH SEPARATELY IN COLD WATER
- GENTLE CYCLE - DO NOT BLEACH - TUMBLE DRY LOW
- DELICATE CYCLE - IRON ON LOW - DO NOT DRY CLEAN



Storage instructions

Store in a cool, dry place. Extreme temperatures during storage will shorten power bank life. Keep power bank connectors/contacts clean and dry.

Rechargeable power bank system care.

To prolong the performance of the power bank we recommend you follow these steps:

- Only use the power banks and charger cable provided by REALTREE®.
- Fully charge the power bank until all four (4) indicator lights are lit.
- Unplug the charger cable after the power bank is fully charged.
- Power bank should be charged before storage.

Power bank disposal instructions.

- Please dispose of the power banks as per your local municipality regulations.
- Keep our environment safe.



Power Bank Heating Time	High heat	Medium heat	Low heat
PB10-002 (10,000mAh)	4 hours	5.5 hours	7 hours

This device complies with part 15 of the FCC Rules. Operation is subject to the following two conditions: (1) This device may not cause harmful interference, and (2) this device must accept any interference received, including interference that may cause undesired operation.

FCC Warning: Any Changes or modifications not expressly approved by the party responsible for compliance could void the user's authority to operate the equipment.

Note: This equipment has been tested and found to comply with the limits for a Class B digital device, pursuant to part 15 of the FCC Rules. These limits are designed to provide reasonable protection against harmful interference in a residential installation. This equipment generates uses and can radiate radio frequency energy and, if not installed and used in accordance with the instructions, may cause harmful interference to radio communications. However, there is no guarantee that interference will not occur in a particular installation. If this equipment does cause harmful interference to radio or television reception, which can be determined by turning the equipment off and on, the user is encouraged to try to correct the interference by one or more of the following measures:

-Reorient or relocate the receiving antenna. -Increase the separation between the equipment and receiver. -Connect the equipment into an outlet on a circuit different from that to which the receiver is connected. -Consult the dealer or an experienced radio/TV technician for help.

The device has been evaluated to meet general RF exposure requirement. The device can be used in portable exposure condition without restriction.

Warranty information:

A.Y.K. International Inc. warrants to the customer of the heated product a one (1) year (limited warranty). This warranty covers the power bank, the heating module and the vest/jacket from the initial date of purchase from a REALTREE® retailer. A dated proof of purchase is required. During this period, we will only replace or repair products or components that are found to suffer from defective workmanship or defective material. This limited warranty does not extend to damage resulting from misuse, neglect or abuse, normal wear and tear, accident, fire or flood that damages the product or its components. If a defect arises in the product, the user should promptly return the product to an authorized retailer within the limited warranty period. If the product or any component is replaced or repaired, the replacement or repair is covered only for the remainder of the original limited warranty period dating from the purchase of the original product. The defective product must be returned to the retailer and the power bank must be included.

Contact: If you have any trouble with the product during the warranty period, please contact us via email: info@aykinc.com



HEATED VESTS AND JACKETS

bluetooth user manual

1 - Download the TIMES INNOVATION app



on




or scan QR code

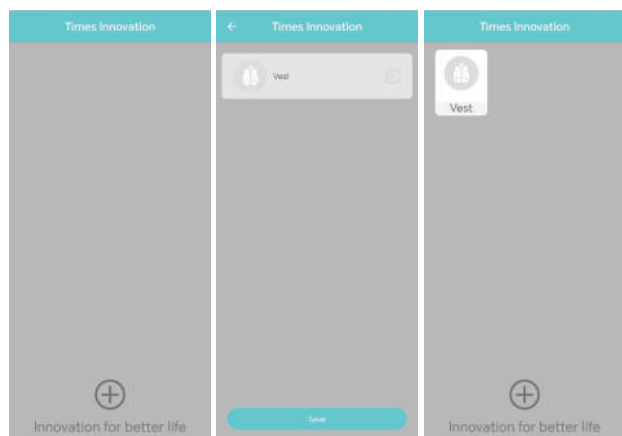


For IOS phones download from



2 - Connect a fully charged power bank to the garment.

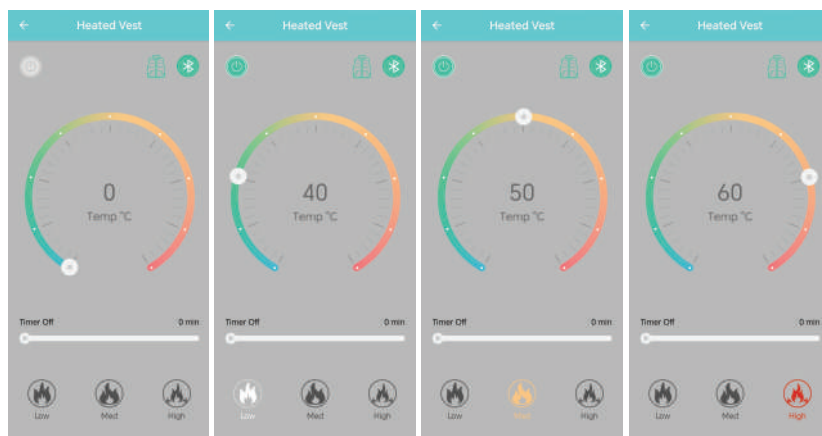
3 - Open the TIMES INNOVATION app and go to the home page click on the , select the vest and click save. Open the product list page and select the vest to go to control panel.



HOME PAGE

SELECT VEST

PRODUCT LIST



CONTROL PANEL

POWER ON/LOW

MEDIUM

HIGH

4 - On the control panel, if both gloves are green, your have successfully connected to the bluetooth app.



5- Press the power button on app to turn the heat on.

It will power on, in low heat.



6 - Select the heat setting between Low, Medium, High heat by using the icons on the bottom of screen.



You can also set the temperature manually with the garment's power button, and the TIMES INNOVATION app will automatically synchronize.

Red Light



High heat
3 Press

Orange Light



Medium Heat
2 Press

White Light



Low Heat
1 Press

7 - Use the timer function to set the desired duration of time heated.



8 -To power off the heat, simply click on the power button on the control panel. It's important to note that the power button should appear grey when off and green when on, indicating the status of the heat. If you do not intend to use your heated garment for a couple of days, it is recommended that you unplug the power banks and charge them.

This device complies with part 15 of the FCC Rules. Operation is subject to the following two conditions: (1) This device may not cause harmful interference, and (2) this device must accept any interference received, including interference that may cause undesired operation.

FCC warning:

Any Changes or modifications not expressly approved by the party responsible for compliance could void the user's authority to operate the equipment.

Note: This equipment has been tested and found to comply with the limits for a Class B digital device, pursuant to part 15 of the FCC Rules. These limits are designed to provide reasonable protection against harmful interference in a residential installation. This equipment generates uses and can radiate radio frequency energy and, if not installed and used in accordance with the instructions, may cause harmful interference to radio communications. However, there is no guarantee that interference will not occur in a particular installation. If this equipment does cause harmful interference to radio or television reception, which can be determined by turning the equipment off and on, the user is encouraged to try to correct the interference by one or more of the following measures:

- Reorient or relocate the receiving antenna.
- Increase the separation between the equipment and receiver.
- Connect the equipment into an outlet on a circuit different from that to which the receiver is connected.
- Consult the dealer or an experienced radio/TV technician for help.

The device has been evaluated to meet general RF exposure requirement. The device can be used in portable exposure condition without restriction.