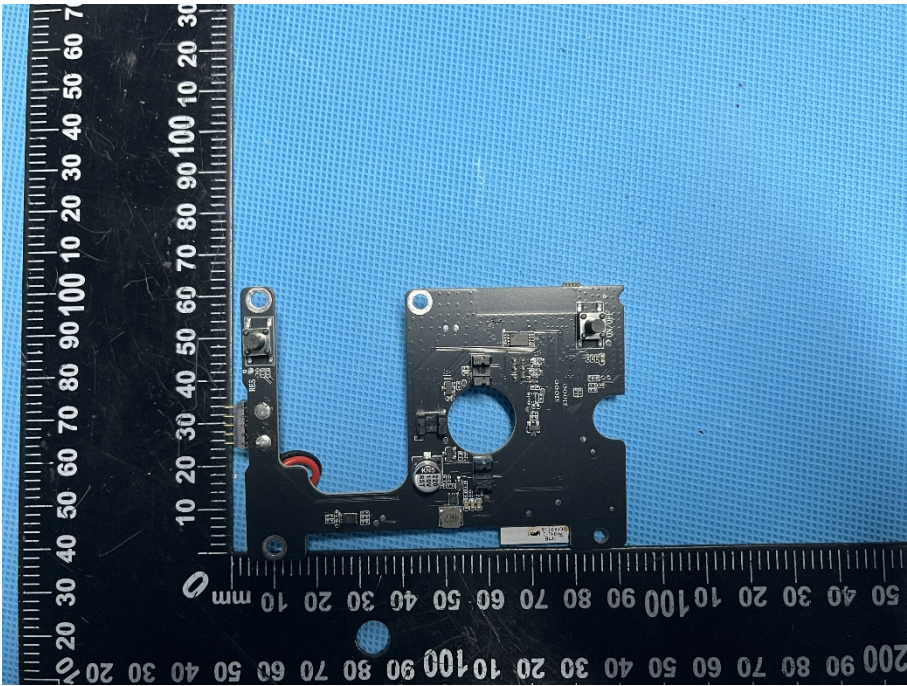
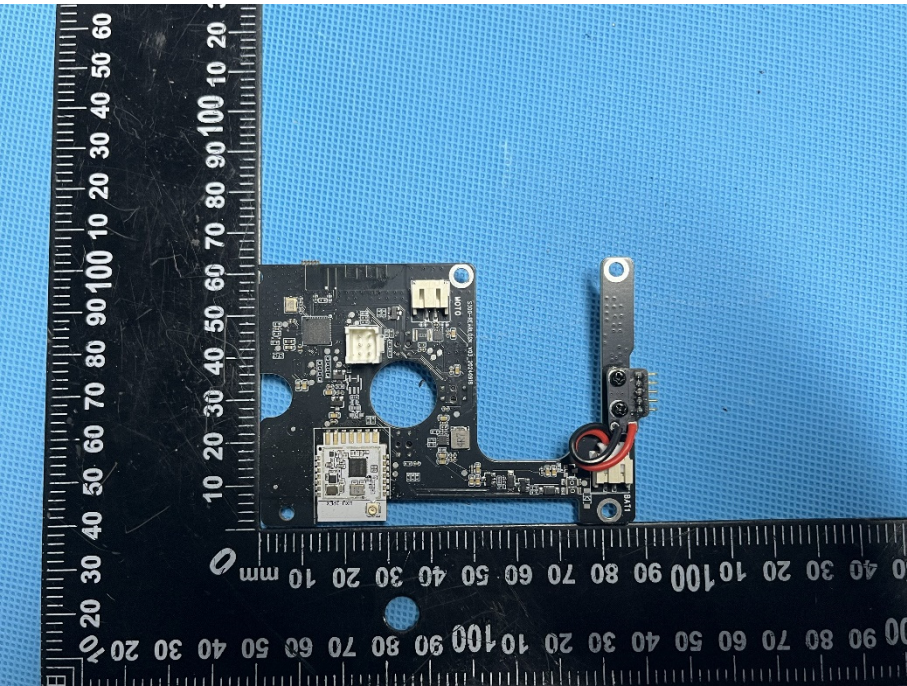
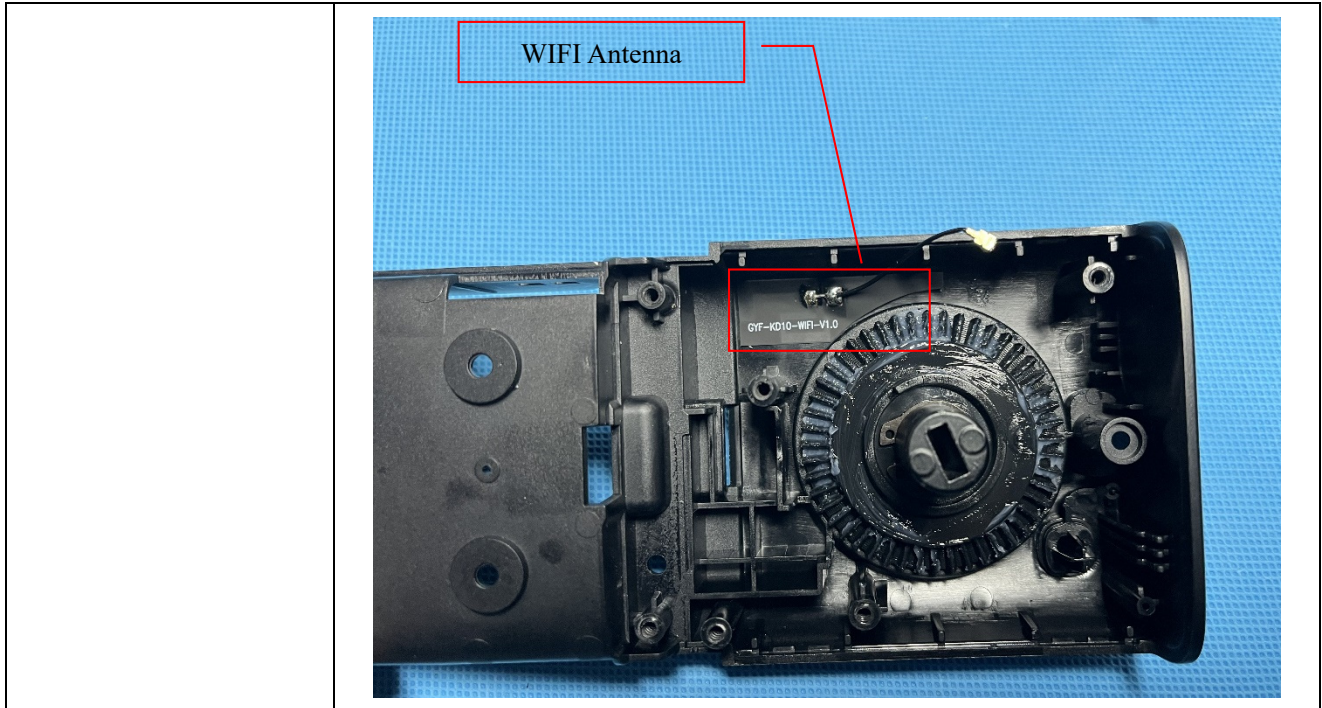


<div>Solder Board-Component View 6</div>	 A photograph of a small, black, L-shaped printed circuit board (PCB) component. The component is positioned on a blue textured surface. A black ruler with white markings is placed vertically to the left of the component, showing measurements in millimeters. The component features a central circular cutout, several surface-mounted components, and a small red wire connected to one of the terminals. The ruler markings range from 0 to 100 mm.
<div>Solder Board-Component View 7</div>	 A photograph of the same black, L-shaped PCB component from a different angle. The component is positioned on a blue textured surface. A black ruler with white markings is placed vertically to the left of the component, showing measurements in millimeters. The component features a central circular cutout, several surface-mounted components, and a small red wire connected to one of the terminals. The ruler markings range from 0 to 100 mm.
<div>Antenna View</div>	



NOTE: Solder Board-Component View 3 and View 7 the antenna in the picture has been shielded and has no transmitting function.