

the **Little Cat**

INPET

A special space for cats to be healthy
Play-Eat Ground, by INPET

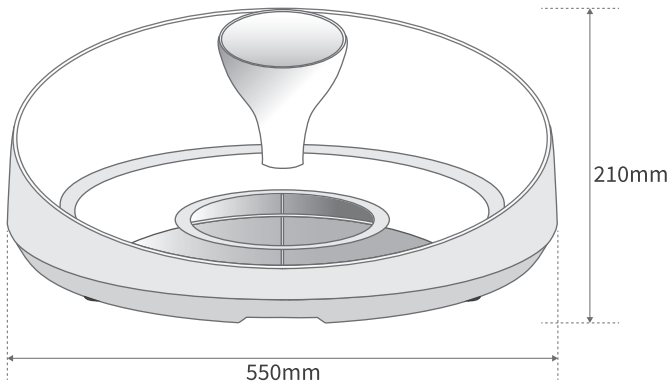


INPET CV1

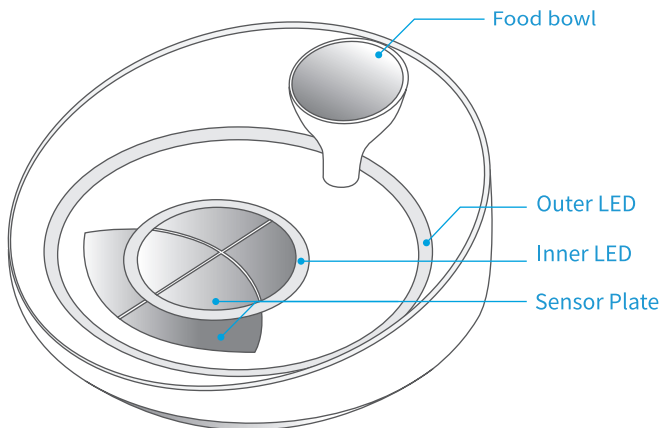
Before using the product,
please read this instruction manual and use the product correctly.

Specifications

Name	INPET
Model Name	INPET CV1
Size	550mm(W) x 550mm(L) x 210mm(H)
Weight	4.5kg
power consumption	10W
Rated voltage	5V DC, 2A
Measurable weight	1kg~15kg
wireless communication	Bluetooth 5.2
APP	INPET (Android, iOS)
Manufacturer	The Little cat co., Ltd.

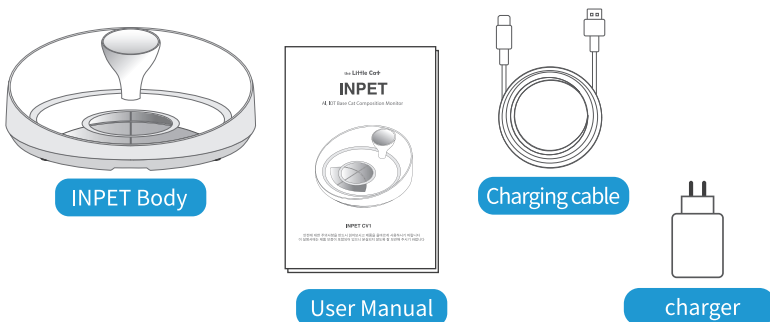


Part Name



Depending on product options, Outer LED and Inner LED may not be provided.

Product composition



Precautions for Safe Use

These are precautions to ensure the safety of users and pets. Before using the product, be sure to read it carefully and use the product correctly.

Installation

When installing the product, install it on a hard and level floor.

When installing the product, be careful not to twist or press the power cable.

Do not install near heat sources or in places subject to moisture, direct sunlight, or water.

Be sure to use a 5V DC, 2A USB charger. Using a charging adapter with a different voltage may cause malfunction or fire.

For the product's plastic packaging and cushioning materials, store them out of reach of pets and children or dispose of them immediately after installing the product.

Product use

This product is intended only for cats and is not intended for use by humans or children.

Recommended for use by cats over 3 months old and weighing between 1kg and up to 15kg.

If the product is not used for a long time, turn off the power.

Do not touch the power source, wires, or product with wet hands.

Do not apply heat or shock to the product

Do not disassemble, repair, or modify the product arbitrarily.

The product has a built-in sensor that measures your pet's body composition.

If you use the product near nearby electronic devices such as refrigerators, TVs, or audio devices, interference may occur or errors in measured values may occur due to the effects of electromagnetic waves. If possible, please use it at a certain distance from electronic products.

Do not arbitrarily apply force to the product, such as by having a person step on it or place an object on it.

When cleaning the product, do not pour or spray water or disinfectants directly. We recommend applying a small amount of disinfectant to a soft cloth and wiping the device with light pressure.

Do not use INPET for any purpose other than measuring your pet's dining area and body composition.

Precautions for Safe Use

✕ In case of product damage or abnormality

If the power cable and power cord are damaged, they must be replaced with new ones to avoid danger. If the power cable or power cord is damaged, stop using it and replace it with a new one of the same size.

If the product is flooded, turn off the power.

If the product emits a burning smell, visible smoke, or strange noises, immediately turn off the power.

If water or foreign matter gets into the electrical parts of the product, turn off the power and contact the customer support center.

? Things to check before inquiring about a product

Please check the following before contacting the customer support center or the manufacturer due to a problem that occurs while using the product. If the problem is not resolved even after checking the information below, contact the Customer Support Center.

The power doesn't come on.

Please check again whether the power cord is connected properly. If the power is connected correctly, the LED turns on once and turns off during the reset process. If it still doesn't work, try replacing the power cord or a charger of the same standard.

The LED does not turn on or off.

Please check if the blotus pairing is working properly. Or please check if you updated the INPET app to the latest version. If it still doesn't work, disconnect the power cord of the product once and connect it again to restart.

The connection is not smooth.

If there are many electronic devices around, communication problems may occur due to electromagnetic interference.

If possible, place the product as far away from electronic devices as possible.

My cat's weight is strange.

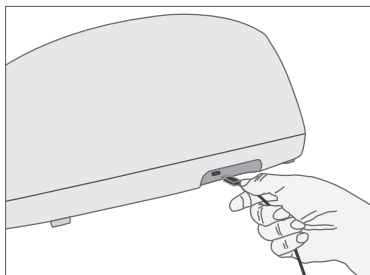
If the product is used on a carpet or mat, the weight value may be abnormal. product. Please use it on a hard, level floor.

The body composition value is strange.

Check if the INPET electrode plate is dirty or unclean. If it is contaminated, body composition measurement may not proceed smoothly. Alternatively, if there are many electronic devices nearby, electromagnetic interference may cause sensor failure. If possible, place the product as far away from electronic devices as possible.

Using the Product

1 Installation and power connection



Be sure to use a 5V DC, 2A USB charger. Using a charging adapter with a different voltage may cause malfunction or fire.

Connect the included USB cable to the INPET main body as shown in the picture above.

When the power is first connected, the LED turns on once and then turns off.

If you disconnect the power cord, it will automatically turn off.

When installing the product, install it on a hard and level floor.

Do not install near heat devices or in places subject to moisture, direct sunlight, or water.

2 Download and install the app

INPET must be used together with the INPET app to utilize its normal functions. The procedure may vary depending on your smartphone model, OS version, and smartphone manufacturer.

APP Download



How to use APP



Search the Google Play Store/App Store for 'INPET' or scan the QR code above to download the app.

You can check how to use the app by scanning the QR code.

If you already have INPET APP installed, make sure it is the latest version.

The INPET app supports Android OS 6.0 or higher, IOS 14.0 or higher.

The INPET app may be changed without further notice to improve use and performance.

Using the Product

3 Start the app

After installing the INPET app, be sure to connect the power to the INPET device before running the app. If there is no connection, the app cannot be run. If connected to INPET, the app runs normally.

4 Account Registration (Sign up)

In order to use the INPET app, account registration (Sign up) is required. Please proceed with INPET membership registration and login according to the instructions and guidance provided in the INPET app. If you already have an account, please log in

5 Pairing with INPET

After registering and logging in, the APP automatically attempts to pair with INPET through the smartphone's Bluetooth. Try pairing through the app within 5m of the INPET device.

6 Operational test

Run the INPET APP to verify that all functions are operating normally, including lighting LEDs, generating cat profiles, and recording measurements.

Warranty Certificate

Date of Purchase	
Serial Number	
Place of purchase	
Customer Name	
Telephone Number	
Quality warranty period: 1 year from the date of product purchase	

Customer Support Center

the Little Cat, 4F, BI Center, 130, Beodeul 1-gil, Namsan-myeon, Chuncheon-si, Gangwon-do, Republic of Korea
www.thelittlecat.kr / info@thelittlecat.kr
Business hours: 9:30 ~ 12:00, 13:00 ~ 17:00 on weekdays (closed on legal holidays, Saturdays, and Sundays)

In cases not specified below, Little Cat provides product warranties in accordance with the Consumer Dispute Resolution Standards under the Framework Act on Consumers.

The product's free warranty period applies based on the date of product purchase. (You must bring your purchase receipt)

If the product purchase date cannot be confirmed, the free warranty period starts from the product manufacturing date.

If a performance or functional failure due to a defect in the product itself is discovered under normal use within the warranty period, we will provide free of charge repairs.

Performance and functional failures due to the consumer's intention or negligence will be subject to paid repairs. Even if it is within the warranty period, performance and functional failures due to the consumer's intention or negligence will also be subject to paid repairs.

Charged repairs for failures caused by natural disasters (fire, gas, earthquake, wind and flood damage, etc.), failures caused by external causes other than the product itself, arbitrary disassembly or unauthorized modification of the product, or repairs or modifications by anyone other than the designated repair technician. You will receive .

To request product-related service, please contact The Little Cat's customer support center.



FCC Compliance Statement

This device complies with part 15 of the FCC rules. Operation is subject to the following two conditions: (1) This device may not cause harmful interference, and (2) this device must accept any interference received, including interference that may cause undesired operation.

FCC Interference Statement

This equipment has been tested and found to comply with the limits for a Class B digital device, pursuant to part 15 of the FCC Rules. These limits are designed to provide reasonable protection against harmful interference in a residential installation. This equipment generates, uses and can radiate radio frequency energy and, if not installed and used in accordance with the instructions, may cause harmful interference to radio communications. However, there is no guarantee that interference will not occur in a particular installation. If this equipment does cause harmful interference to radio or television reception, which can be determined by turning the equipment off and on, the user is encouraged to correct the interference by one of the following measures:

- Reorient or relocate the receiving antenna.
- Increase the separation between the equipment and receiver.
- Connect the equipment into an outlet on a circuit different from which the receiver is connected.
- Consult the dealer or an experienced radio/TV technician for help.

FCC Caution

Any changes or modifications not expressly approved by the party responsible for compliance could void the user's authority to operate this equipment. This transmitter must not be co-located or operating in conjunction with any other antenna or transmitter.

FCC Radiation Exposure Statement

This equipment complies with FCC radiation exposure limits set forth for an uncontrolled environment. This equipment should be installed and operated with minimum distance 20 cm between the radiator and your body. This transmitter must not be co-located or operating in conjunction with any other antenna or transmitter.