

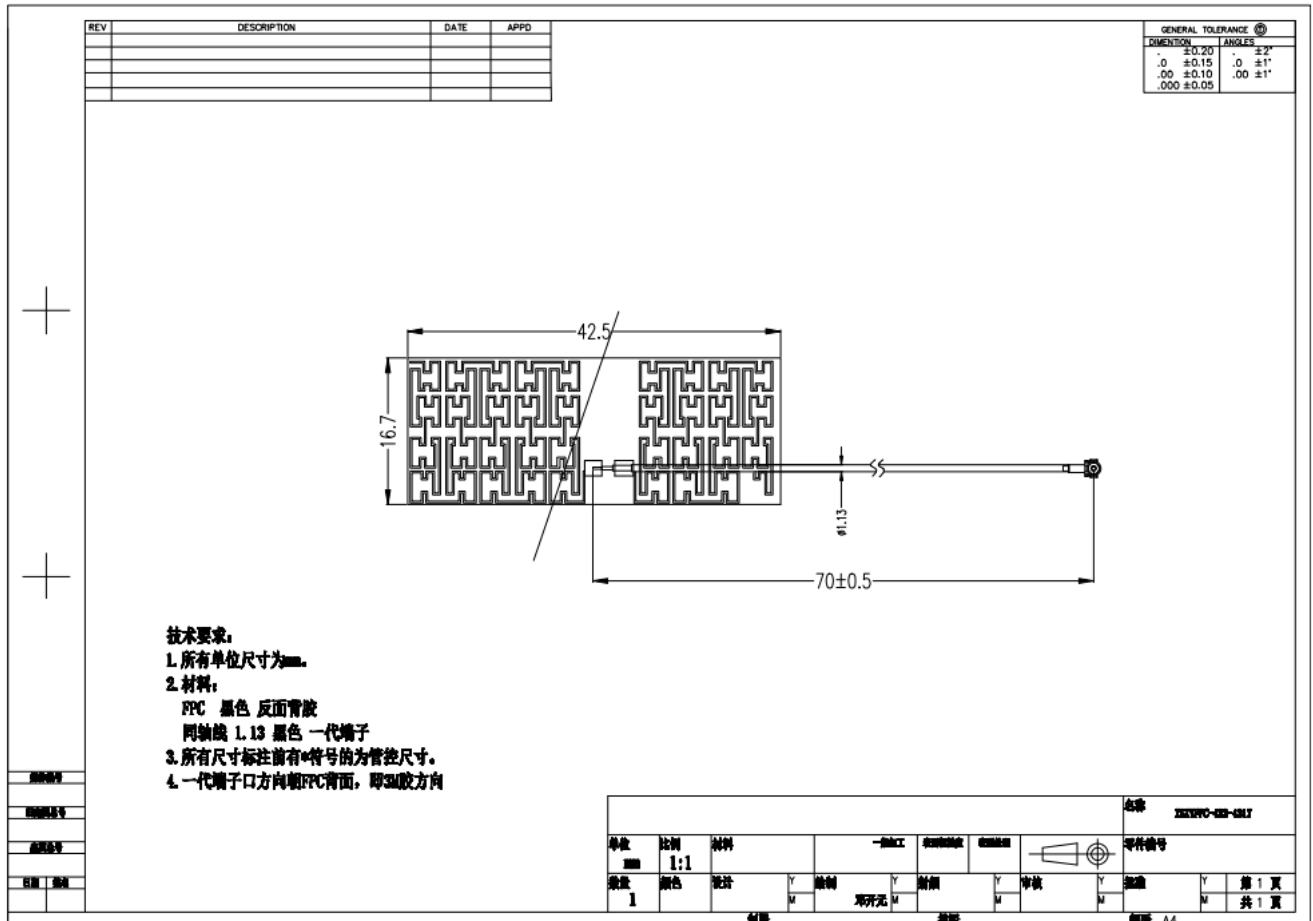
Product specification

Quick Reference Date

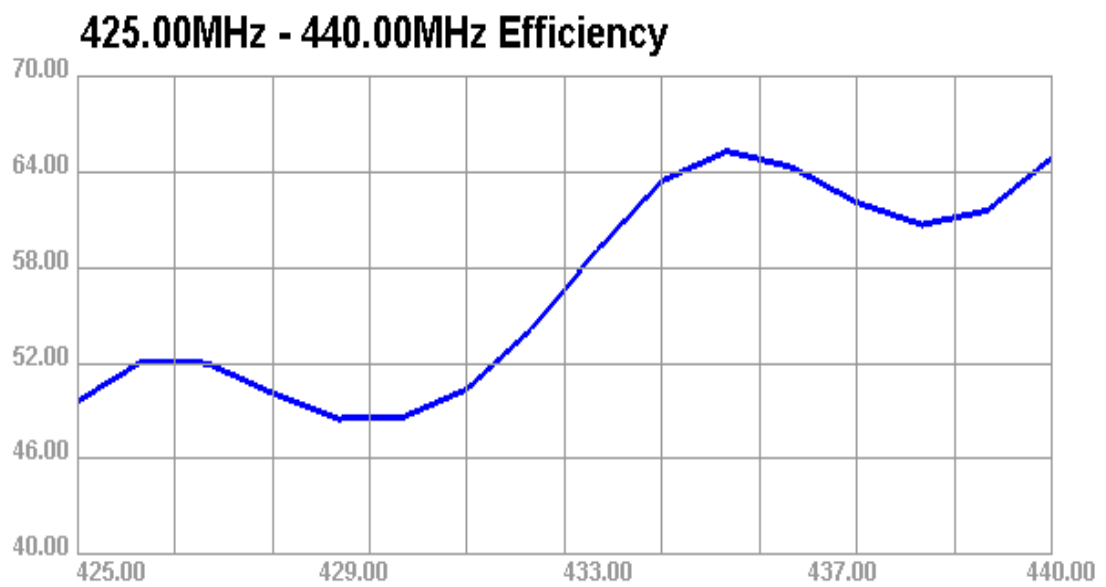
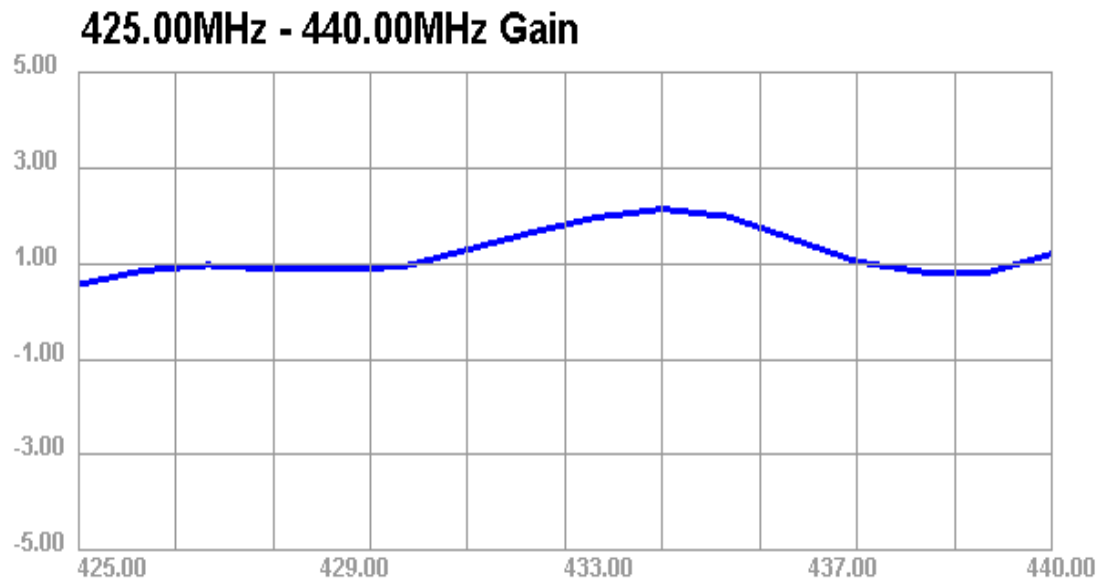
	Antenna module on the system board	
Frequenc Range	400-450MHz	
Ant. Port Input Pwr. (dBm)	0 (Typ. BT class 2 output power)	
Tot. Rad. Pwr. (dBm)	-1.2 (Input pwr – loss pwr)	
Peak EIRP(dBm)	1.5	
Directivity (dBi)	1 (all direction antenna)	
Efficiency (dB)	60.2 %	
Gain (dBi)	0 (Peak Gain XY-plane)	
Maximum Power (dBm)	1.7 (XY-plane)	
Minimum Power (dBm)	-4(XY-plane)	
Avg. Power (dBm)	-0.5(XY-plane)	
Input Impedence(ohm)	50	
Polarization Type	Vertical & Horizontal	
V. S .W. R	< 1.4	

All the technical data and information contained herein are subject to change without prior notice

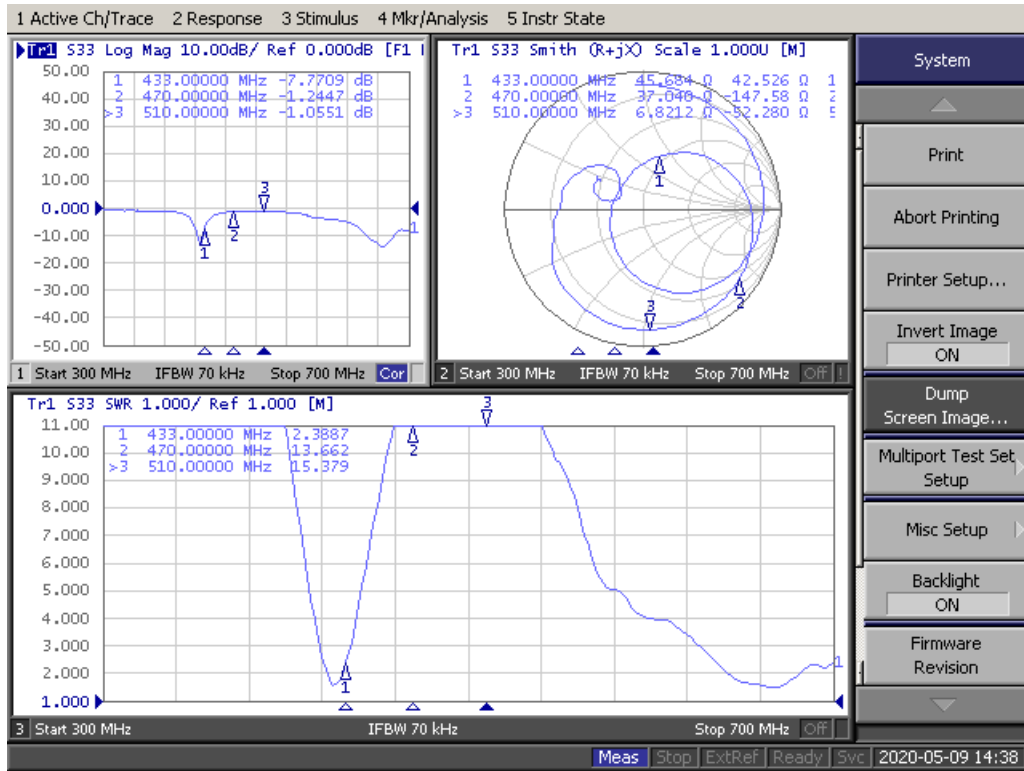
Antenna Layout & module on the system board



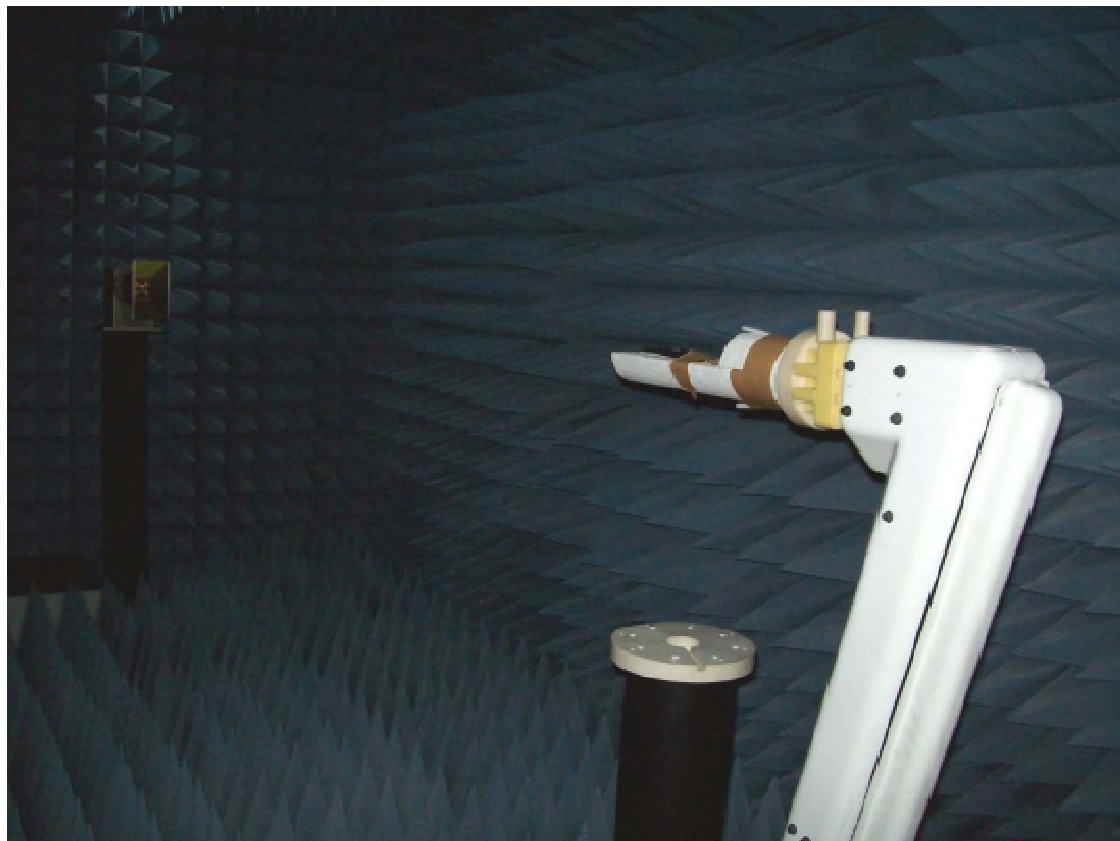
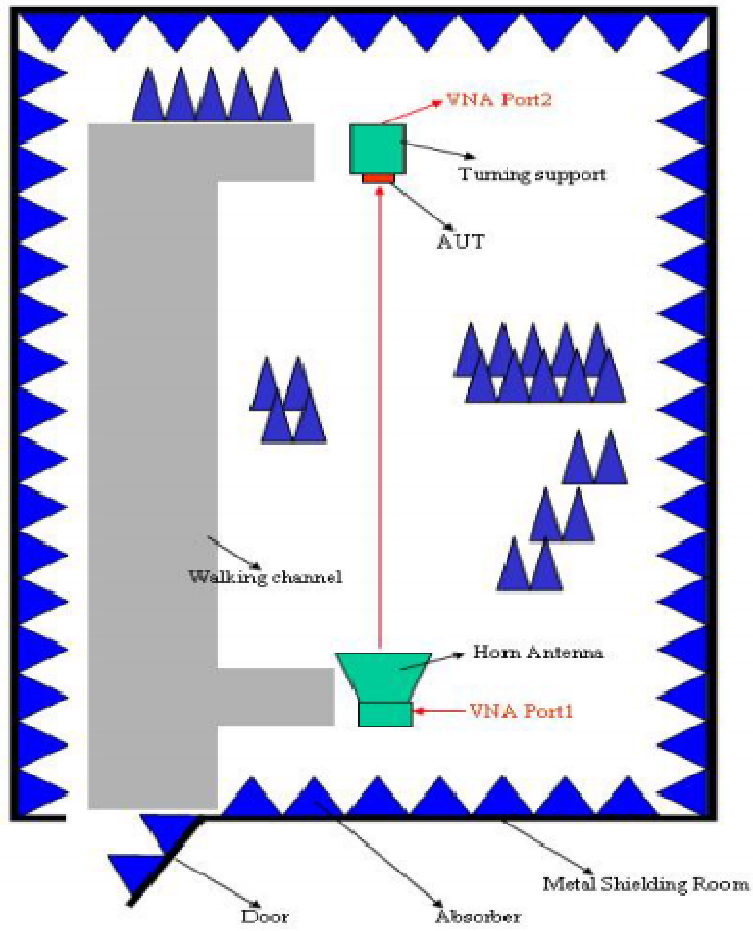
Antenna Gain



Return Loss

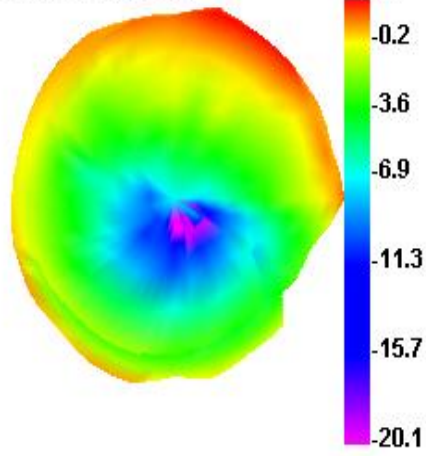


The Environment of Antenna Radiation Pattern

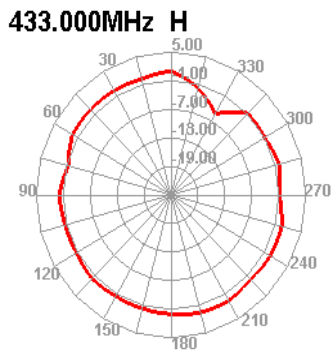


3D radiation pattern diagram

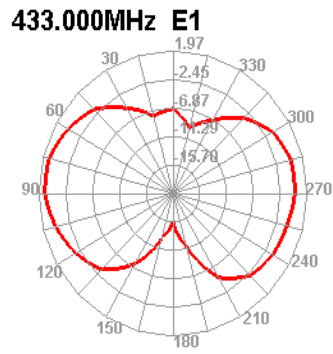
433.000MHz



XY-plane



XZ-plane



YZ-plane

