

AI Care Guardian

User Manual



seeniyor.com



Valid Scope

This manual is a special installation manual for Seenyor AI Care Guardian and it is not applicable to other types of our products. It describes the installation, use, maintenance and failure of the product. Please read it carefully before operation.

Important Notice

This device is a standard consumer electronic product and is not classified as a medical device. It uses advanced millimeter-wave radar technology for monitoring, but its performance can be influenced by various external factors.

As a result, there may be a reduction in the accuracy of its monitoring capabilities. The company assumes no liability for any omissions or false alarms that could potentially impact the safety of life or property.

The factors affecting accuracy include, but are not limited to:

- Failure to follow the manual's instructions for proper installation and configuration.
- Environmental interference and the inherent limitations of radar technology, which cannot guarantee 100% accuracy.
- Unstable power supply or network connection.
- Device lifespan: As the product operates continuously, long-term use may lead to aging of the components, affecting accuracy, error rates, and other performance indicators.



Product Specification

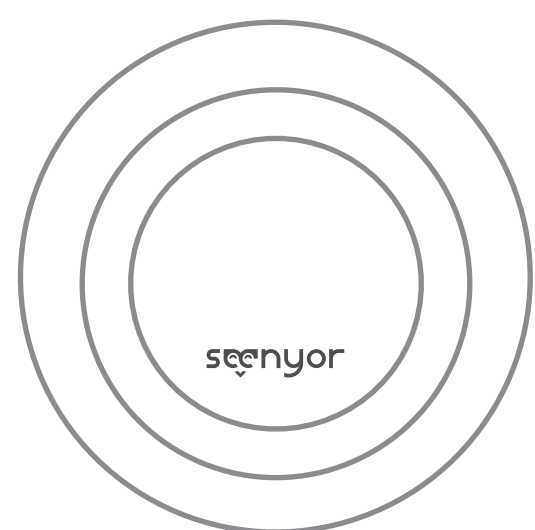
Seenyor AI Care Guardian is a millimeter wave device that provides users with people counting, fall detection, voice intercom and more.

Parameters

PARAMETERS	VALUES
Dimensions	70x70x27mm (Without base)
Weight	83.1g (Without power adapter)
Operating Temperature	-10°C - 45°C
Operating Humidity	5% - 95%
Mounting Mode	Ceiling / Wall
Protection Class	IP65
Power Requirements	5V USB DC, 220V Power Adapter
Power Consumption	Average: <3W; Instantaneous: <4W
Communication Interface	2.4G (Wi-Fi)
Azimuth	140°
Elevation	120°
Modulation	FMCW
Transmitted Power	11dBm
Number of Antennas	4T4R
Detection Area	Up to 24m2
LED Indicator	Blue - Pairing Mode Red - No Internet



Package Contains



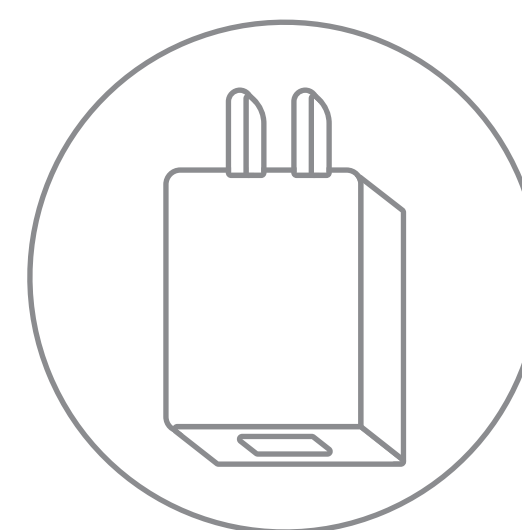
1x
AI Care
Guardian



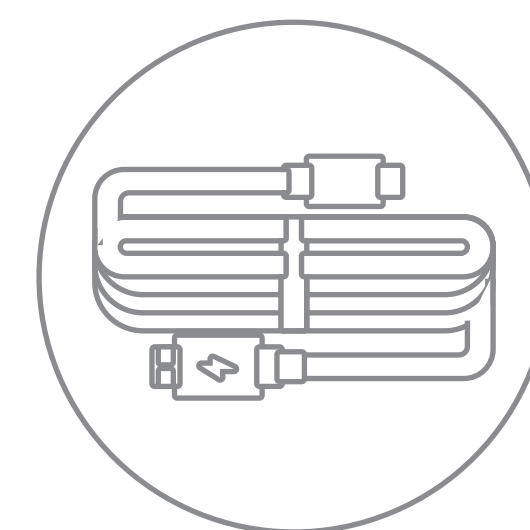
1x
Ceiling-Mounted
Bracket



1x
Wall-Mounted
Bracket



1x
Power
Adapter



1x
USB/Type C
Power Cord

Attention!

This product should be stored at temperatures between -20°C and 85°C . Avoid storing it in environments with extreme temperatures, whether too high or too low.

Attention!

This product is designed for use in environments with a room temperature range of -10°C to 45°C . Exposure to temperatures outside this range may affect radar performance and could cause irreversible damage.



Position Selection

The Seenyor AI Care Guardian covers an area of 24m². For optimal performance, the sensor's coverage area should be aligned with the room's layout during installation. Installation requirements may vary depending on different usage scenarios, as shown in the table below:

SCENARIO	MOUNTING POSITION	MOUNTING HEIGHT
Livingroom	Wall-Mounting	1.6 meters (5.24ft)
Bedroom	Wall-Mounting	1.6 meters (5.24ft)
Bathroom	Ceiling-Mounting	2 - 3 meters (6.5 - 10ft)

Precautions for choosing the installation location of the device:

If the device exceeds its detection range, it will be unable to capture any data.

For installation height, please refer to the provided table. Use a distance meter or tape measure for accurate measurement—do not rely on visual estimation.

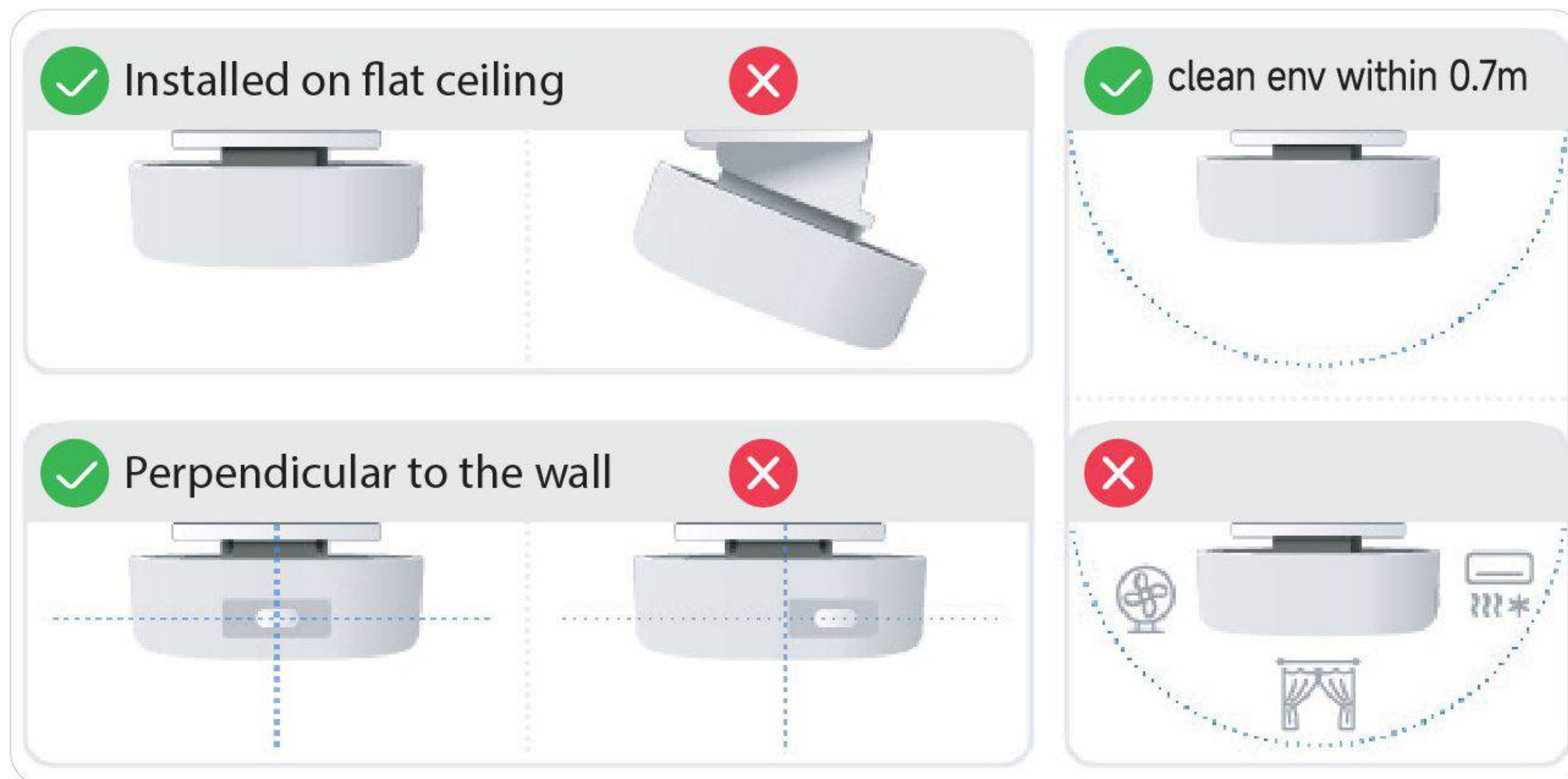
Avoid installing the device near high-temperature sources (e.g., heating pads, incandescent lamps) or behind obstructions such as ceiling fans, ceiling lights, pendant lamps, or cabinets, as these may block signals.

Ensure there are no vibrating objects (e.g., curtains, air conditioners, fans) within 0.7 meters (2.3 ft) of the installation site to prevent interference.



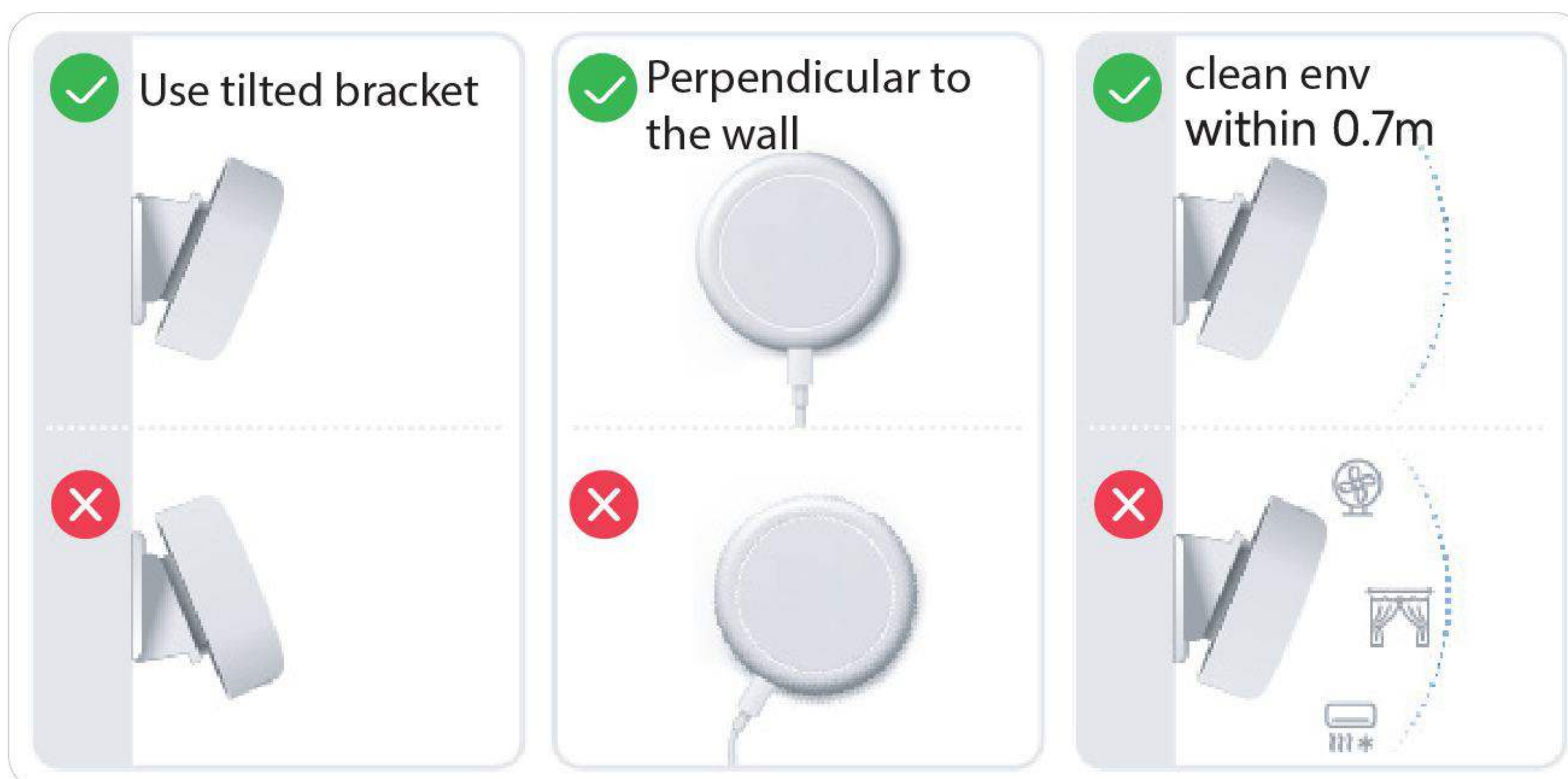
Mounting Modes

CEILING MOUNTING



Note: Please mount the device on a flat ceiling without tilting. Ensure that the bracket is aligned correctly, with the device's buttons/indicators positioned perpendicular to the wall.

WALL MOUNTING



Note: When using a bracket with a tilt angle, ensure that the power cord hangs perpendicular to the floor.



Installation Steps

Step 1: Mounting the Bracket

Following the "Mounting Mode" instructions, select the mounting position and mark it with a pencil. Depending on your needs, you can either peel off the adhesive backing on the bracket to secure it, or use self-tapping screws for the mounting holes.

Step 2: Insert the Device into the Base

Insert the powered device into the slot of the bracket.

Step 3: Fix the Power Cord

Choose the position for the cable clips and mark it with a pencil. Place the power cord into the clips, then secure them to the wall or ceiling using the provided double-sided adhesive. Press firmly for at least 10 seconds to ensure proper adhesion.

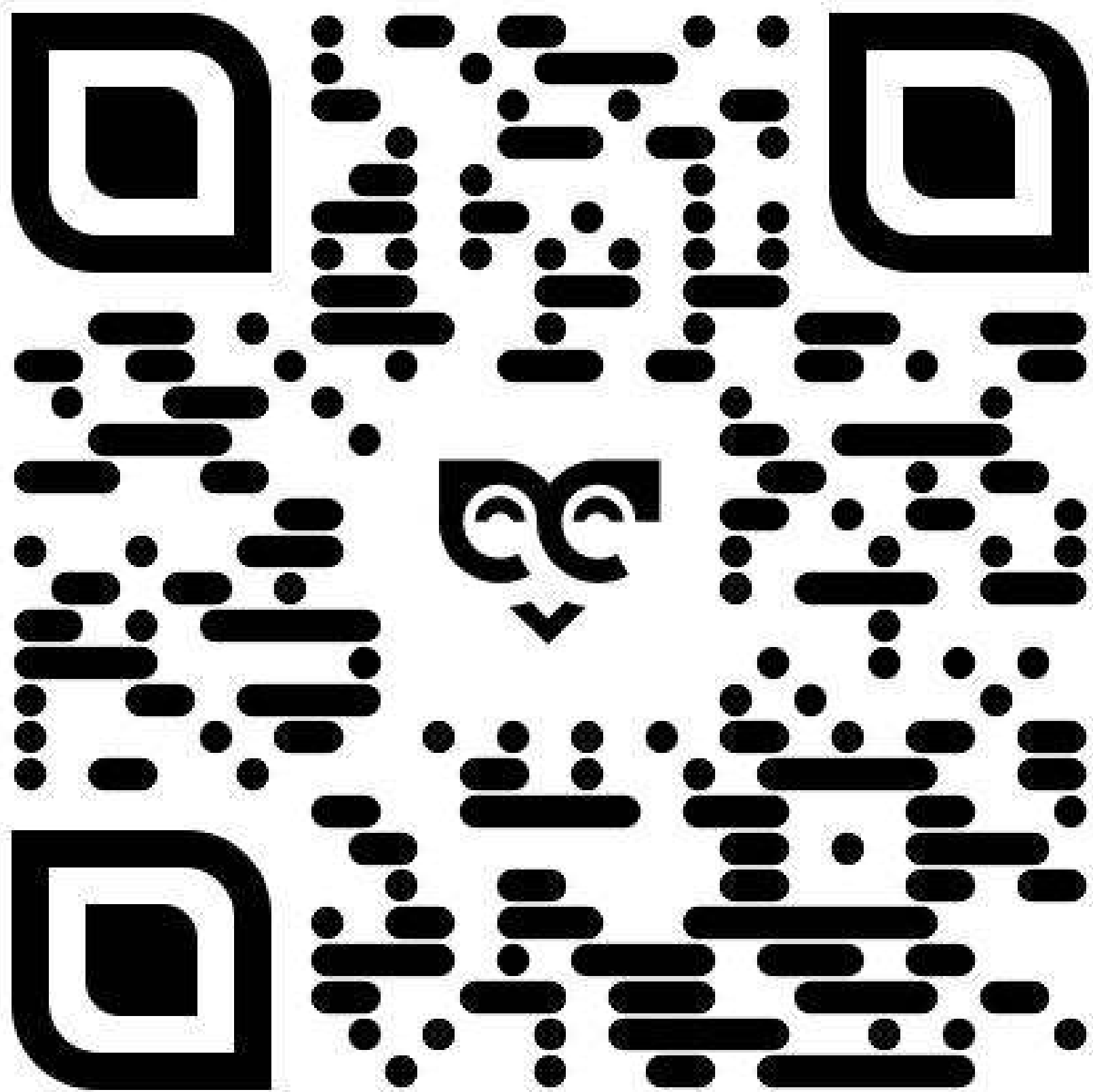
Note: The actual radar detection range and the desired indicator range may vary due to obstructions or interference in the environment where the device is installed.



Seenyor App

To simplify the setup and control of your Seenyor AI Care Guardian, download the **Seenyor App** on your smartphone. Use the app to configure your device, monitor data, and receive real-time alerts.

Scan the QR code below to download the app and follow In App Instructions:



Seenyor



Stay connected and in control—anytime, anywhere.



Tips

1

The Seenyor AI Care Guardian currently operates solely on 2.4GHz wireless networks. If your router supports both 2.4GHz and 5GHz bands, ensure to select the 2.4GHz network during setup.

2

Disable mobile data in your phone's settings. Ensure your phone is connected to the correct home Wi-Fi network and that you've entered accurate Wi-Fi credentials during configuration to avoid red status indicators.

3

Select the appropriate installation height during device setup.

4

Proper pairing of the Seenyor AI Care Guardian to a room is essential for its functionality, as different room types require different services. Optimal performance is achieved by selecting the correct room type during configuration.

5

The Seenyor AI Care Guardian employs deep learning technology to learn the room's layout and the user's daily routine over approximately one week. Following this period, expect significantly improved accuracy and device performance.



Limited Warranty Disclaimer

WARRANTY NOTICE: The Seeniyor AI Care Guardian warranty covers manufacturing defects in materials and workmanship for a period of six months from the date of purchase, as per the warranty terms. Damage from accidents, improper installation, misuse, or natural events (such as lightning or floods) is not covered. Please refer to the warranty section in this manual for full details.

Safety Disclaimer

IMPORTANT: This device is designed to assist in fall detection but is not a life-saving device. The Seeniyor device is intended for supplementary monitoring purposes only. It should not be relied upon in emergencies or as a replacement for emergency services. In case of a medical emergency, please contact your local emergency service provider immediately



Device Functionality Disclaimer

WARNING: The functionality of the Seenyor AI Care Guardian is dependent on a stable Wi-Fi connection and internet access. Loss of connectivity will result in an interruption of alerts and monitoring services. Seenyor Pty Ltd. assumes no liability for any issues arising due to connectivity disruptions or network failures.

Data Interpretation Disclaimer

NOTE: Data provided by this device, including fall detection and other activity data, is for reference purposes only. This information should not be interpreted as clinical or medical data. Always consult a healthcare professional for medical advice and evaluations.

User Responsibility Disclaimer

USER RESPONSIBILITY: It is the user's responsibility to ensure proper installation and use of the Seenyor device as per the instructions provided in this manual. Failure to adhere to the setup and usage guidelines may affect device performance. Seenyor Pty Ltd. is not responsible for any damage resulting from improper installation or unauthorized modifications.



Liability Limitation Disclaimer

LIMITATION OF LIABILITY: Seenyor Pty Ltd. is not liable for any personal injury, loss, or damage arising from the use of this device. Users are advised to maintain personal insurance coverage for risks, including medical, property, and liability insurance, as Seenyor Pty Ltd. does not provide such coverage.

Warnings

1. Handle your Seenyor device with care.
2. The Seenyor device may break if dropped.
3. Use only the provided power adapter to avoid malfunction or potential damage to the device.
4. Tampering with or opening the device voids the warranty.
5. Keep the device away from water, as water damage is not covered under the warranty.
6. The device will not function during a power outage.
7. If the Wi-Fi in your home is not working, the device will not transmit alerts to emergency contacts.
8. Follow the installation and usage instructions carefully; the device will not work if instructions are not followed.
9. Avoid mounting the device on wallpaper, as it may fall off or damage the wallpaper.
10. Follow instructions carefully when removing the device from the wall.



FCC Regulations

This Device has been tested and found to comply with the limits for a Class B digital device, pursuant to Part 15 of the FCC Rules. These limits are designed to provide reasonable protection against harmful interference in a residential installation. This equipment generates, uses and can radiated radio frequency energy and, if not installed and used in accordance with the instructions, may cause harmful interference to radio communications. However, there is no guarantee that interference will not occur in a particular installation. If this equipment does cause harmful interference to radio or television reception, which can be determined by turning the equipment off and on, the user is encouraged to try to correct the interference by one or more of the following measures:

- Reorient or relocate the receiving antenna.
- Increase the separation between the equipment and receiver.
- Connect the equipment into an outlet on a circuit different from that to which the receiver is connected.
- Consult the dealer or an experienced radio/TV technician for help.

This device complies with part 15 of the FCC rules.

Operation is subject to the following two conditions:

(1) This device may not cause harmful interference, and (2) this device must accept any interference received including interference that may cause undesired operation.

Caution: Any changes or modifications not expressly approved by AI CARE TECH DMCC for compliance could void the user's authority to operate this equipment.

The antennas used for this transmitter must be installed to provide a separation distance of a least 20 cm from all persons and must not be co-located or operating in conjunction with any other antenna or transmitter.



For Australian Market

This product is registered as a level 1 equipment and complies with the requirements of the relevant ACMA Standards made under the Radiocommunications Act 1992. Deemed to comply with AS/NZS 3820:2020, AS/NZS CISPR 32:2015+A1:2020, AS/NZS 4268:2017+A1(2021), AS/NZS 2772.2-2016+A1(2018). Operation is subject to these conditions:

1. This device may not cause interference.
2. This device must accept any interference, including interference that may cause undesired operation.

CE Compliance (EU)

This device complies with the 2014/53/EU Radio Equipment Directive (RED). As per Article 10.8(a) and 10.8(b) of the RED, the following table provides information on the frequency bands and maximum RF transmit power for this product in the EU:

Frequency Band (MHz)

2400–2483.5

Maximum Power (dBm)

WLAN: 17.53dBm. BT-LE: 9.52dBm



Frequently Asked Questions

Q1

I'm experiencing issues with device configuration.

1. Ensure you select the **2.4GHz Wi-Fi** network.
2. During configuration, if prompted by your phone to use the current network, select YES. It's also advisable to disable your mobile data.
3. Confirm that both Wi-Fi and local networks are enabled in the Seenyor Care app settings on your mobile device.
4. If the status indicators are red due to no Wi-Fi, unstable Wi-Fi signal, or incorrect Wi-Fi password, press and hold the HOME button for 3-5 seconds until the lights flash blue. You can then proceed to repeat the configuration process.
5. Make sure your AI Care Guardian device isn't connected to another phone. If it is, delete the device from the other phone and repeat the configuration process.
6. If the device still isn't configured, power it off and repeat the process.

Q2

I'm not receiving messages.

Ensure notification permissions for the Seenyor Care app are enabled in your mobile phone settings.



Frequently Asked Questions

Q3

I'm not receiving texts or calls.

Check if texts or calls are blocked on your phone's blacklist settings.

1. Verify the availability and functionality of internet, mobile network, or cloud service. Ensure your phone is not powered off or out of service area.
2. Confirm the correct emergency contact number is entered, including the country code.
3. If applicable, you may have exceeded the maximum limit for voice calls or text messages to the same mobile phone number per day.

Q4

Can I use one account to control multiple devices?

Yes, you can add as many devices as you'd like.

Q5

Can I log in to the same account using different mobile phones?

The Seenyor app supports up to 5 different mobile logins, but only one at a time. You can view all connected phones in your app settings under "Manage devices."

Q6

How do I know if the device is working?

You can see in app if device is online.