

Speaker cup

USER MANUAL

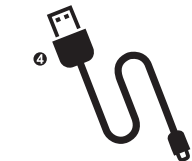
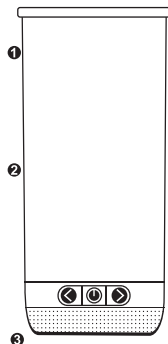
FC Made in CHINA

1 Important Notes



- Please read this manual carefully before use.
- Never store or use this product in temperatures below 32°F (0°C) or above 115°F (45°C).
- Remove speaker from the tumbler body before washing to avoid damage.
- Please charge speaker with power adapter.
- Charge in full before first use.
- Changes or modifications not expressly approved by the party responsible for compliance could void the user's authority to operate this device.
- This device complies with part 15 of the FCC Rules. Operation is subject to the following two conditions:
(1) This device may not cause harmful interference.
(2) This device must accept any interference received, including interference that may cause undesired operation.
- USB Cable included for charging only.

2 Product Contents




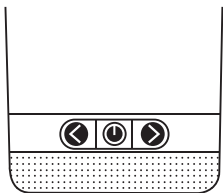
- ❶ Tumbler lid
- ❷ Tumbler
- ❸ Speaker (screw on)
- ❹ USB-C charging cable

3 Technical Information

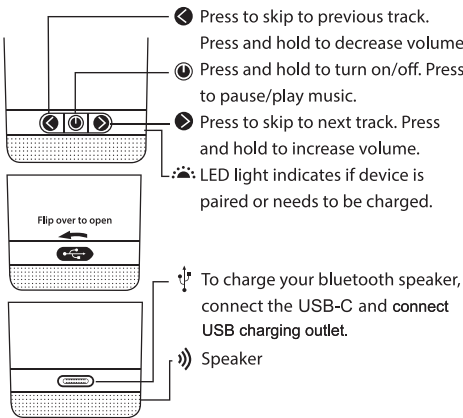
Working Voltage	3.7-4.2V
Charging Power	DC5V±0.25V
Bluetooth Version	Bluetooth 5.0
Recharge Method	USB-C
Battery Capacity	1000mA
Rated Power	0.99dBm
Bluetooth Range	Barrier Free Space: ≥32 Obstacle Space: ≥16 feet
Tumbler Material	Double Wall Stainless Steel
Product Size	3.46"x 2.72"x 8.26"
Tumbler Capacity	20 oz. capacity when filled to rim, 18 oz. capacity with lid on
Product Weight	398 g
FCC ID	FC 2BGM2-SP01

4 Connecting Your Device

- Turn on bluetooth speaker by pressing and holding .
- Turn your bluetooth device on search mode. Find device titled "FRIO".
- Once a connection with media device has been established, "connected" will sound.



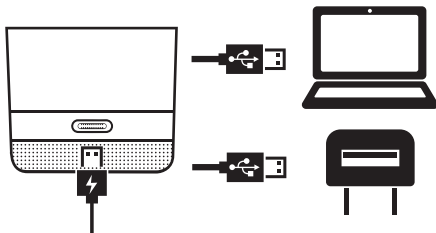
5 Bluetooth Speaker Functions



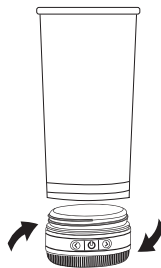
6 Power Recharging

Connect the USB cable included to charge your bluetooth speaker tumbler through a computer USB port or power adapter.

Low Power Warning: When voltage is lower than 3.3V, "low battery please charge" will sound. Leave for at least 2.5-3 hours for full charge.



7 Tumbler Cleaning Instructions



- To clean the tumbler, first remove the speaker at the bottom of the tumbler by twisting and unscrewing the speaker from the body. This will avoid damage to the speaker while cleaning. Clean the speaker bottom separately by wiping with a damp cloth.
- Hand wash tumbler recommended.
- Use non-abrasive cleaner.
- Not intended for use in freezer or microwave.
- Caution when handling hot liquids.
- We do not recommend submerging the speaker.

FCC Requirement

Any changes or modifications not expressly approved by the party responsible for compliance could void the user's authority to operate the equipment.

This device complies with Part 15 of the FCC Rules. Operation is subject to the following two conditions:

- (1) this device may not cause harmful interference, and
- (2) this device must accept any interference received, including interference that may cause undesired operation.

Note: This equipment has been tested and found to comply with the limits for a Class B digital device, pursuant to Part 15 of the FCC Rules. These limits are designed to provide reasonable protection against harmful interference in a residential installation. This equipment generates, uses, and can radiate radio frequency energy, and if not installed and used in accordance with the instructions, may cause harmful interference to radio communications. However, there is no guarantee that interference will not occur in a particular installation. If this equipment does cause harmful interference to radio or television reception, which can be determined by turning the equipment off and on, the user is encouraged to try to correct the interference by one or more of the following measures:

- Reorient or relocate the receiving antenna.
- Increase the separation between the equipment and receiver.
- Connect the equipment into an outlet on a circuit different from that to which the receiver is connected.
- Consult the dealer or an experienced radio/TV technician for help.