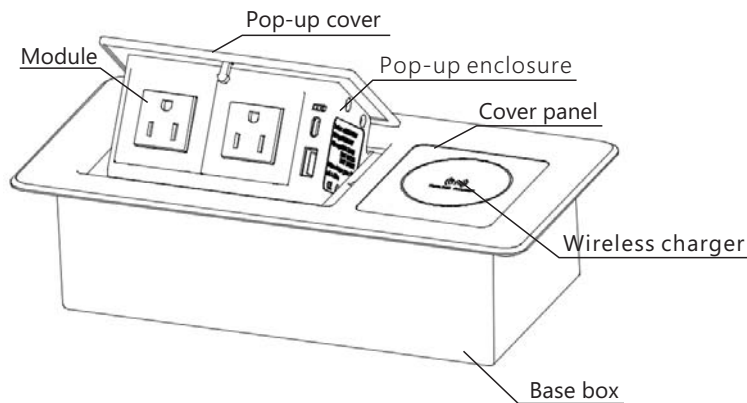


STS-PU01 Installation and Operation Manual

Product Diagram



Safety Guide

1. For indoor use only.
2. Only licensed professional electrical contractors should install the floor box.
3. Do not insert foreign objects into the socket.
4. Avoid liquids spills into the outlet.
5. If the product is malfunctioned, immediate electrical maintenance is required by professional.

Product Features

1. Compatible with Type-45 series power or data modules.
2. Equipped with 15W wireless charging function.
3. Easy and quick to install.

Tools Required for Installation

Phillips head screwdriver

Jig saw

Included accessories:

1. M4x25 Phillips flat head self-tapping screw (x4)
2. M3x30 Phillips flat head self-tapping screw (x2)

Installation Steps

1. Cut-out opening

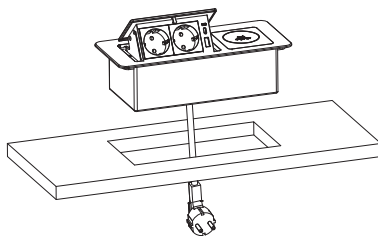
Make a rectangular cutout (Size: 225x111mm) on the desired desk or table surface.

Ensure that there are power outlets within the surrounding area so that after the product is installed, its power plug can be connected.



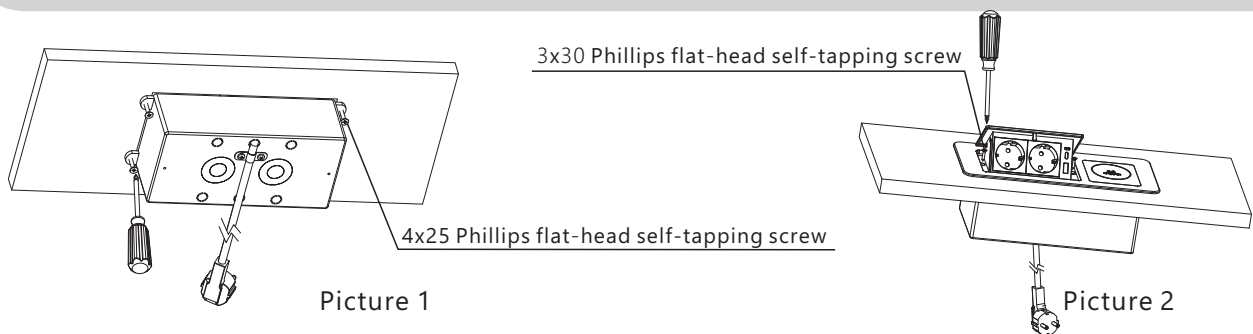
2. Mounting the unit

Feed power cord through the cutout until the full length of the cable has passed through.



3. Fixing the unit

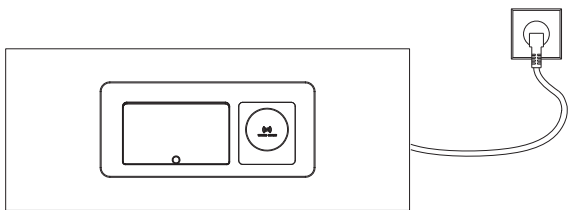
- 1). Tighten the four M4x25 flat head self-tapping screws clockwise to securely fix the base box to the desk. (Picture 1)
- 2). Screw the two M3x16 Phillips flat head self-tapping screws into the two holes to secure the cover panel to the base box. (Picture 2)



STS-PU01 Installation and Operation Manual

4. Connecting to power

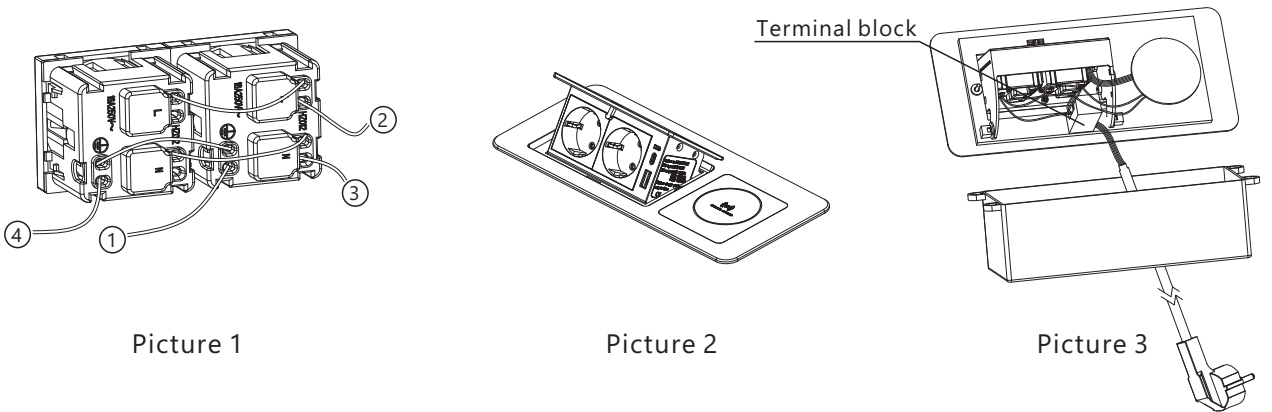
Connect the power cord to the power port and then the product is ready to use.



Operation Instructions

1. Installing modules

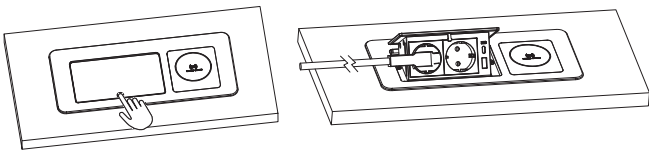
- 1). Connect the two modules as shown in the diagram below. (Picture 1)
- 2). Snap the modules into the frame. (Picture 2)
- 3). ① wire should be connected to the grounding hole on the panel, ②③④ wires should be connected to the terminal block installed on the backside of the cover panel. (Picture 3)



- ① wire should be connected to the grounding hole on the panel
②③④ wires should be connected to the terminal block installed on backside of the the cover panel.

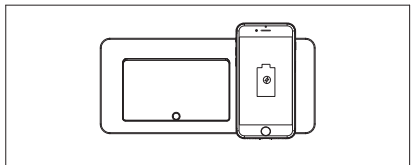
2. Opening of the pop-up lid

Press on the small recessed circle on the panel with your finger, and the panel will pop up automatically, allowing you to insert the power plug into the module for normal use.



3. Wireless charging

Place the device that supports wireless charging on top of the wireless charging symbol to charge the device.



FCC Warning

This device complies with Part 15 of the FCC Rules. Operation is subject to the following two conditions:

(1) This device may not cause harmful interference, and (2) this device must accept any interference received, including interference that may cause undesired operation.

NOTE 1: This equipment has been tested and found to comply with the limits for a Class B digital device, pursuant to part 15 of the FCC Rules. These limits are designed to provide reasonable protection against harmful interference in a residential installation. This equipment generates, uses and can radiate radio frequency energy and, if not installed and used in accordance with the instructions, may cause harmful interference to radio communications. However, there is no guarantee that interference will not occur in a particular installation. If this equipment does cause harmful interference to radio or television reception, which can be determined by turning the equipment off and on, the user is encouraged to try to correct the interference by one or more of the following measures:

- Reorient or relocate the receiving antenna.
- Increase the separation between the equipment and receiver.
- Connect the equipment into an outlet on a circuit different from that to which the receiver is connected.
- Consult the dealer or an experienced radio/TV technician for help.

NOTE 2: Any changes or modifications to this unit not expressly approved by the party responsible for compliance could void the user's authority to operate the equipment.

RF Exposure Statement

To maintain compliance with FCC'S RF Exposure guidelines, This equipment should be installed and operated with minimum distance of 20cm between the radiator your body. This device and its antenna(s) must not be co-located or operation in conjunction with any other antenna or transmitter.