

Common issues and solutions:

phenomenon	reason	solution
No power	Power switch is not turned on	Turn on the power switch
	Built-in battery runs out	Charge the product via adapter or power cable
	The plug is not plugged in properly or the power cable is defective	Reinsert or replace the power cable
	Power outlet is not electric field	Replace the power outlet
	Other reason	Contact after-sales dept.
No sounds	Volume is turn off or mute mode	Adjust the volume or turn off Mute mode
	Source media/input connection selected incorrectly	Select the correct audio media/ input connection
	Audio media/input connection selected audio file	Reinsert media with supported format
	Other reason	Contact after-sales service
Microphone no sounds	Microphone volume is off or too low	Adjust microphone volume
	Poor contact	Reinsert o replace the Microphone jack
	Other reason	Contact after-sales service
Distortion of sounds	Poor audio signal or volume too large	Adjust audio files / signals or reduce volume
	Battery running low	Full charged before using
Squeal from Microphone	The microphone volume is too loud or too close to the speakers	Adjust microphone volume and keep properly distance from speakers

Tips:

To protect your hearing from damage and avoid affecting others, recommends that do not use this product at high volume for long time.  
In order to bring better using experience, please keep the accessories of this product.

FCC Statement

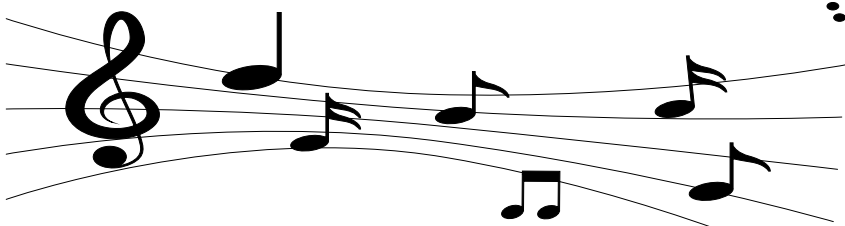
This equipment has been tested and found to comply with the limits for a Class B digital device pursuant to part 15 of the FCC Rules. These limits are designed to provide reasonable protection against harmful interference in a residential installation. This equipment generates, uses and can radiate radio frequency energy and, if not installed and used in accordance with the instructions may cause harmful interference to radio communications. However, there is no guarantee that interference will not occur in a particular installation. If this equipment does cause harmful interference to radio or television reception, which can be determined by turning the equipment off and on, the user is encouraged to try to correct the interference by one or more of the following measures:

- \*Reorient or relocate the receiving antenna.
- \*Increase the separation between the equipment and receiver.
- \*Connect the equipment into an outlet on a circuit different from that to which the receiver is connected.
- \*Consult the dealer or an experienced radio/TV technician for help.

Caution: Any changes or modifications to this device not explicitly approved by manufacturer could void your authority to operate this equipment.  
This device complies with part 15 of the FCC Rules. Operation is subject to the following two conditions: (1) This device may not cause harmful interference, and (2) this device must accept any interference received, including interference that may cause undesired operation..

RF Exposure Information

This equipment complies with FCC radiation exposure limits set forth for an uncontrolled environment, This equipment should be installed and operated with minimum distance 20cm between the radiator and your body.



POWER SPEAKER

Dear customer

Thank you for selecting  
The series of this Rechargeable trolley speaker with good sounds performance, more function for selecting and easy operating. This product supports a variety of audio input and switching, such as USB, SD / TF card (built-in decoder supports MP3 / WMA and other formats), Bluetooth, FM radio, wireless microphone, Line-in, AUX input, microphone / guitar input Etc. (Some models may only support some of the functions listed above, the specific functions must be subject to the actual product). Meet all various demand of user , will be a good choice for entertainment, For more safety and full use of this product , please read this Manual carefully before using. Please keep this manual for reference.  
In order to bring better using experience, please keep the accessories of this product.

Safety Warning

1. Please use within the specified power range (refer the back plate) ,otherwise will damage the product .
2. Avoid tread, press , drag , fold the power cable and other cable.
3. There are high-voltage parts inside, please do not disassemble the product without authorization, to avoid the risk of electric shock.
4. Pay more attention to the use environment , do not playing in the high temperature, high voltage, moist dusty environment.
5. Turn off the product during the thunderstorms, unplug from the power socket, disconnect to other products.
6. Avoid the crash with tough object, drop from the height and tumble.
7. Do not touch the back plate and other heat dissipation parts when the product working.
8. Using in the well ventilated area, do not cover or put other items on the top of product, and keep proper distance for the product dissipate heat.
9. Forbidden to place liquid on the product, to prevent the product from being tilted/leaked or the risk of electric shock.
10. This product is not suitable for children to operate, please do not settle this product in a place where children can reach.
11. This product has a built-in battery. Do not overcharge for a long time.
12. Infrequently used, please charge it regularly to maintain the built-in battery performance and working life.



Warning Mark : high-voltage inside, beware of electric shock



This product apply to safeuse in tropical and non-tropical climates



Warning Mark :This product uses a power plug as a disconnection device. It should be easily accessible during use.



This product is only support to be used below 2000 meters elevation, there may be potential safety hazards when used above 2000 meters elevation

Operating instructions

The accessories or marks are installed/printed on the product (all or part, please refer to the actual product), which respectively support the corresponding functions (if have), please follow the instructions to use as below.

Power input



AC power input , a/b is power cable jack , c is built-in power cable  
Attention : please using within the specified power range!



DC power input, this is for use with adapter or battery;  
Attention : please using within the specified power range!

Storage media

This product supports storage media such as U disk / SD card / TF card



USB



SD



TF

External input / output

(3.5mm) line-in audio input jack / RCA lotus input jack (L is left, R is right, corresponding to the white and red of the RCA line)  
(6mm) Audio input jack for microphone or guitar



Line-in Aux/Audio input

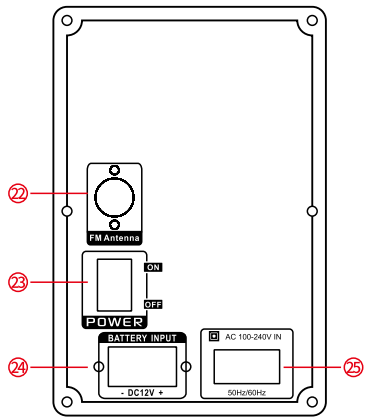
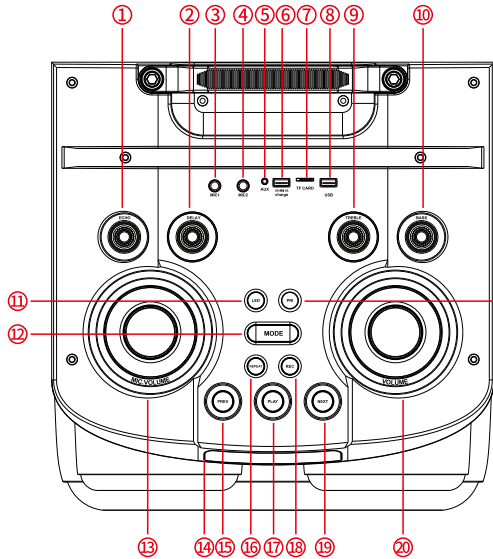


L R



Mic/Guitar input

四、Function is introduced



- |                             |                |           |                  |
|-----------------------------|----------------|-----------|------------------|
| 1、ECHO                      | 2、DELAY        | 3、MIC 1   | 4、MIC 2          |
| 5、AUX                       | 6、5V 1A CHARGE | 7、TF CARD | 8、USB            |
| 9、TREBLE                    | 10、BASS        | 11、LED    | 12、MODE          |
| 13、MIC.VOLUME               | 14、MP3 DISPLAY | 15、PREV   | 16、REPEAT        |
| 17、PLAY                     | 18、REC         | 19、NEXT   | 20、VOLUME        |
| 21、PRI                      | 22、FM ANTENNA  | 23、POWER  | 24、BATTERY INPUT |
| 25、AC 100-240V IN 50Hz/60Hz |                |           |                  |

Function of remote

Some products in this series are equipped with remote control, the functions as follows: Note: Some models may have different remote controls. Please refer to the actual comparison operation

- ⏻ -Power button , supported models can be turned on and off by this button;
- 🔇 -Mute button, quickly turn off the volume with one click, press again to restore the original volume;
- 0-9-Number buttons, select songs when playing on storage media such as USB/SD/TF card;
- MODE-Mode button, select audio input/Wireless/radio etc functions;
- U/SD-When using U disk and memory card at the same time, choose to play U disk or memory card audio;
- ⏮-Play / Pause (previous channel/next channel switch in radio function);
- ⏪ ⏩ -Previous/Next (Switch to previous/next channel in radio function);
- VOL-Volume up;
- VOL+-Volume down;
- EQ-Preset EQ effect switch;
- REPE(RPT) -REPE(RPT) -Repeat;

