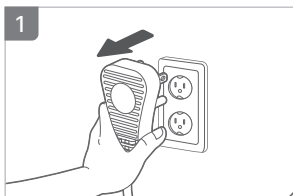
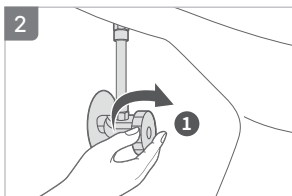


## How to clean filter

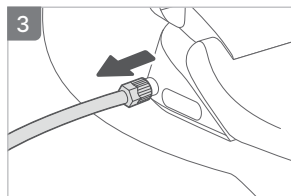
Clean the filter.



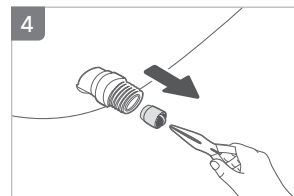
Unplug the power cord.



Close the water supply valve ①.

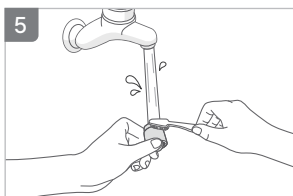


Disconnect the bidet hose from the appliance.



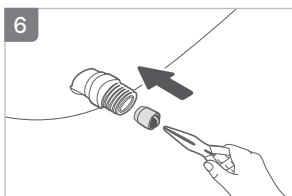
Detach the mesh filter from the water inlet.

- Flat-nose pliers can make detachment easier.



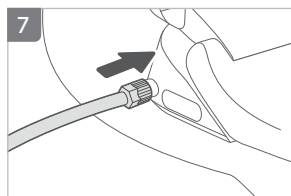
Shake the mesh filter under running water to clean it.

- Using a brush can effectively clean the filter.
- Avoid excessive cleaning of the mesh filter. It may cause mesh filter damage.

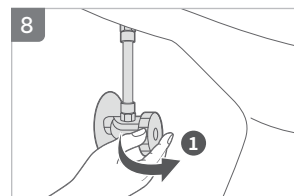


Insert the mesh filter into the water inlet and reassemble the hose.

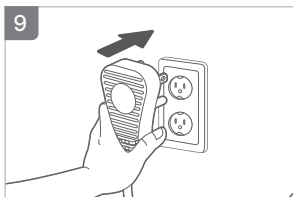
- Make sure to push the mesh filter all the way in.



Connect the bidet hose to the appliance.



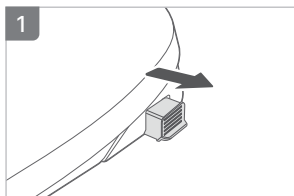
Open the water supply valve ①.



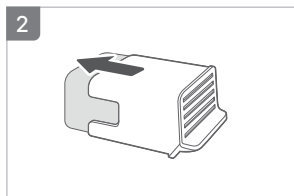
Reconnect the power plug.

### 3 Replacing the deodorizer filter

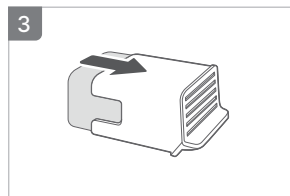
#### How to replace filter



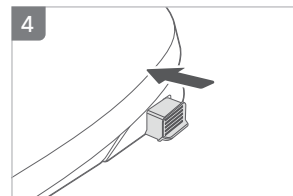
Remove the duct filter.



Remove the deodorizer filter from the duct filter.



Assemble the new deodorizer filter.



Assemble the duct filter to the body frame.

## Check the appliance regularly to ensure safe use.

### Power

- Is the indicator turning 'on' and 'off' as you move the plug when power is connected?
  - Is a part of the power plug hotter than usual?
  - Is a part of the power cord disfigured, discolored, or damaged?
- If the above problem occurs, stop using it immediately and contact the service center.

### Display

- Is the appliance's display blinking?
- If abnormal blinking occurs, contact the service center immediately.

### Sound

- Is the appliance making abnormal sounds?
- If abnormal sounds are heard, contact the service center immediately.

The bidet may operate abnormally due to minor causes because the user is unfamiliar with using the appliance. Check the following or contact the service center if the problem persists.

### The appliance is not working.

Power plug	Check that the power plug is connected to a 120 V ~ 60 Hz outlet.
Power failure	Check if the power supply is off.
Power	Check if the power of the control panel is turned off. See if the buttons other than the power button work normally. If another button is pressed, it is not powered up.
Lock mode	The seat sensor lock mode is enabled by default, and the buttons do not work unless the seat is occupied.

### There is no water stream.

Water supply valve	Check if the water supply valve is locked.
Nozzle	Check if the nozzle is clogged with foreign matters. Brush the nozzle hole with a toothbrush and get rid of foreign matters.
Water supply cut off	If there is no water stream immediately after installation, please check if water supply is cut off.

### The water stream is too weak.

Water pressure	Check if the water pressure is set too low. Adjust the water pressure accordingly.
Nozzle	Check if the nozzle is clogged with foreign matters. Brush the nozzle hole with a toothbrush and get rid of foreign matters.

The bidet may operate abnormally due to minor causes because the user is unfamiliar with using the appliance. Check the following or contact the service center if the problem persists.

## The seat or cleansing water is not warm.

Temperature control button	Check if the Seat/Hot water temperature control buttons are set to 'off'. Press the Seat/Hot water temperature control button to adjust to a comfortable temperature.
----------------------------	--

## Drying air is cold.

Drying temperature control is set to 'off'.	Check if the drying temperature indicator is off. If so, turn on the function by pressing the button to adjust to a comfortable temperature.
---	---

## Water comes out of the nozzle.

T-shaped connector	Check if the rubber packing is inserted into the T-shaped pipe and fix the nuts again.
Bidet hose connection	Make sure the bidet hose is fully inserted into the connection.

## Water comes out after stopping bidet operation.

After cleansing	Water coming from between the nozzles after cleansing is for cleaning the nozzles. Therefore, it is not a malfunction.
Nozzle cleaning	Sometimes, water drops from around the nozzles fall into the toilet. The water drops from the bottom of the appliance after cleaning the nozzles may drop afterwards. This is not a malfunction.

## The appliance makes a sound.

### Buzzing noise

After plugging in the power, a buzzing noise can be made from the main body. This is part of the nozzle position initialization process and not a malfunction.

## Buttons do not function when pressed.

### Seat sensor

It may not function properly when not seated due to the default setting of the seat sensor lock mode.

## I hear a ringing sound during Rear cleansing/Front cleansing/Turbo cleansing

### Water supply error

Check if the water supply valve is properly open.

[Troubleshooting]

1. Check if the water supply valve is open.
2. Contact the service center if the problem persists despite troubleshooting.



- The appliance has a default power saving system that switches to Standby mode when not in use.
- The system can be disabled in the special mode. When disabled, the power saving function is off.

Item		Bidet	
Product name		Coway Bidetmega	
Model		BIDETMEGA 500S(E)/500S(R)	BIDETMEGA 400S(E)/400S(R)
Rated voltage		120V~ 60Hz	
Power consumption		1,450 W	
Power plug		1,500 mm	
Water supply pressure		0.1 MPa - 0.68 MPa	
Product size		390 mm X 532 mm X 134 mm (E) 390 mm X 497 mm X 134 mm (R)	390 mm X 532 mm X 134 mm (E) 390 mm X 497 mm X 134 mm (R)
Product weight		4Kg (E) / 3.9Kg (R)	3.9Kg (E)/ 3.8Kg (R)
Warm water cleansing device	Cleansing	Max 0.60 L/min, nozzle auto self-washing function	
	Bidet	Max 0.60 L/min, nozzle auto self-washing function	
	Rated time	About 2 minute for cleansing, about 2 minute for bidet	
	Water pressure control	Mycom control, 5-level adjustment	
	Warm water temperature setting	4 levels (off: room temperature, weak: 30 - 42°C)	
	Maximum hot water power consumption	1,540 W	
	Safety device	Temperature sensor, temperature fuse (overheat prevention)	
Warm wind drying device	Warm wind temperature setting	4 levels	
	Rated time	Approx. 2 minutes for drying	
	Heater power consumption	180 W	
	Safety device	Bimetal, temperature fuse (overheat prevention), relay	
Heated seat	Seat temperature adjustment (after seating)	4 steps (Off: room temperature, Low: 31 °C, Medium: 34 °C, High: 37 °C)	
	Heater power consumption	50 W	
	Safety device	Temperature sensor, temperature fuse (overheat prevention)	
Installation materials		1 Bidet hose, 2 Upper fixing brackets, 2 Upper fixing bolts, 1 Screw fixer assy (for remote control), 1 Battery (3 AAA batteries), 1 Installation adapter, 1 Stand for remote control, 1 Holder for remote control, 2 Stickers for remote control, 2 Screws (for holder and stand), 1 Double-sided tape for remote control	
Other functions		Soft opening/closing, Auto opening/closing (BIDETMEGA 500S(E)/500S(R)), User memory, Mesh filter, Mood LED, Toilet LED, Power saving mode	
Operating temperature		0°C - 40°C	
Remote control	Brand name	JOOWON TECH Co., Ltd.	
	Manufacturer/Country	JOOWON TECH Co., Ltd. / Republic of Korea	
	Equipment Name / Model	Specific low output wireless device (wireless device for a wireless data communication system) / BIDETMEGA 500S, BIDETMEGA 400S, BA42-A	

- There may be slight changes to the specifications for improving the appliance's performance.
- The above warm water temperature may vary depending on the input power conditions.

### FCC Standard

#### User manual notice

This device complies with part 15 of the FCC Rules. Operation is subject to the following two conditions:

This device may not cause harmful interference, and (2) this device must accept any interference received, including interference that may cause undesired operation.

#### Information to the user.

Note: This equipment has been tested and found to comply with the limits for a Class B digital device, pursuant to part 15 of the FCC Rules. These limits are designed to provide reasonable protection against harmful interference in a residential installation. This equipment generates, uses and can radiate radio frequency energy and, if not installed and used in accordance with the instructions, may cause harmful interference to radio communications. However, there is no guarantee that interference will not occur in a particular installation. If this equipment does cause harmful interference to radio or television reception, which can be determined by turning the equipment off and on, the user is encouraged to try to correct the interference by one or more of the following measures:

- Reorient or relocate the receiving antenna.
- Increase the separation between the equipment and receiver.
- Connect the equipment into an outlet on a circuit different from that to which the receiver is connected.
- Consult the dealer or an experienced radio/TV technician for help.

### RF Exposure

This equipment complies with FCC radiation exposure limits set forth for an uncontrolled environment.

Changes or modifications not expressly approved by the manufacturer (or party responsible) for compliance could void the user's authority to operate the equipment



## IC Standard

### User manual notice

This device contains licence-exempt transmitter(s)/receiver(s) that comply with Innovation, Science and Economic Development Canada's licence-exempt RSS(s). Operation is subject to the following two conditions:

- 1) This device may not cause interference.
- 2) This device must accept any interference, including interference that may cause undesired operation of the device.

L'émetteur/récepteur exempt de licence contenu dans le présent appareil est conforme aux CNR d'Innovation, Sciences et Développement économique Canada applicables aux appareils radio exempts de licence.

L'exploitation est autorisée aux deux conditions suivantes :

- 1) L'appareil ne doit pas produire de brouillage;
- 2) L'appareil doit accepter tout brouillage radioélectrique subi, même si le brouillage est susceptible d'en compromettre le fonctionnement.

## RF Exposure

This equipment complies with IC RSS-102 radiation exposure limits set forth for an uncontrolled environment.

## Exposition aux RF

Cet équipement est conforme aux limites d'exposition aux rayonnements IC établies pour un environnement non contrôlé.





001

1237896

**coway**

[www.coway-usa.com](http://www.coway-usa.com)