

Basic operation guide on front cleansing

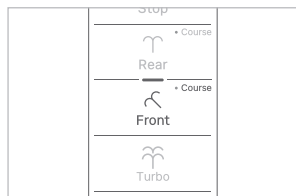
- When you set the water shield function, the water shield automatically activates upon seating and moistens the inside of the toilet to minimize contamination. (For on/off settings of the water shield function, refer to p. 25.)
- Press the Nozzle movement button (⏪ ⏩) to adjust the nozzle position.
- During its use, it is possible to adjust the warm water temperature, the water pressure and the nozzle position according to the body type and preference.
- When the nozzle returns to the position after front cleansing, it is cleansed automatically for about 6 minutes.

How to change the Front cleansing water flow mode

While sitting on the bidet seat, press the 'Front' button on the remote control.
The current mode status is indicated by the LED.

- If you press the 'Front' button again, the mode changes in the order of General → Course mode.
- Cleansing water will spray for approximately 2 minutes and it stops automatically.

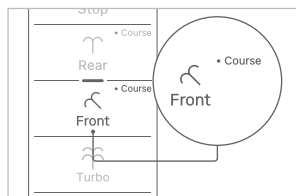
Front cleansing



[General mode]

This is a manual water flow that users can adjust by adding/removing additional functions. While sitting on the toilet seat, press the 'Front' button on the remote control.

- Before the cleansing water is sprayed, the front cleansing nozzle removes cold water so that front cleansing is done at the set warm water temperature.
- Cleansing water will spray for approximately 2 minutes and it stops automatically.



[Course mode]

This is a gentle water stream with minimal irritation.

While sitting on the seat, press the 'Front' button on the remote control to enter the Course mode.

- Before the cleansing water is sprayed, the front cleansing nozzle removes cold water so that front cleansing is done at the set warm water temperature.
- Cleansing water will spray for approximately 2 minutes and it stops automatically.
- A program course water stream optimized and designed for poor conditions of the cleansing area operates.

Additional Functions



Dry

Press the 'Dry (≡)' button on the remote control.

Warm wind is discharged for about 2 minutes to dry the wet area.

- If you lightly wipe off moisture before using the function, drying is completed more quickly.
- Press the 'Dry (≡)' button again during operation to run additional drying for about 2 minutes.
- Press the 'Dry (≡)' button during the Rear cleansing/Front cleansing function to stop the cleansing and start drying.



Stop

To stop the bidet operation during use, press the 'Stop (□)' button.

All operating functions will stop.

- The Dry function will stop about 2 seconds after pressing the 'Stop (□)' button.

Deodorizer

Deodorizer (BIDETMEGA 500S only)

Press the 'Deodorizer' button on the remote control.

It purifies the air inside the toilet for about 1 minute.

- The deodorizer can operate simultaneously when entering the Rear/Front and Dry buttons.

Additional Functions

Nozzle UV

Nozzle UV

Press the 'Nozzle UV' button on the remote control. It sterilizes the nozzle using a UV lamp for about 30 minutes.

- It automatically activates after the seat is vacated and switches to Standby mode if the Rear/Front/Power Wash functions have been used in more than 12 outlet operations.
- It automatically activates upon the first use after 36 hours and immediately after the seat is vacated if the Nozzle UV function has not operated for 36 hours.



Cover seat auto opening/closing (BIDETMEGA 500S only)

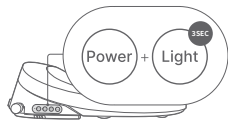
Press the 'd' shape on the remote control.

The cover seat automatically opens or closes when the seat occupancy is disabled.

- When seat occupancy is disabled, it closes automatically 20 seconds later even when not closing the cover seat additionally.
- According to how to set, the initially set 20 seconds may be selected as 8 seconds/20 seconds/40 seconds.

How to set

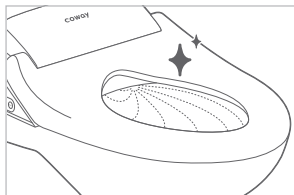
- When pressing the Power + Light keys on the main body for 3 seconds in the standby state, the setting sound is output.
After the setting sound is output, the automatic setting mode is disabled after 10 seconds.
- Each time the Nozzle Clean button is pressed, it can be selected in the following order: OFF - 8 seconds - 20 seconds - 40 seconds.
(8 seconds: Red LED turns on / 20 seconds: Orange LED turns on / 40 seconds: Green LED turns on)



Water shield

When sitting on the bidet, water is automatically sprayed inside the toilet to prevent contamination.

- This function can be activated or deactivated in Special mode. (Refer to P.25)
- This mode is deactivated in the appliance initial state.



Additional Functions [User 1, User 2 Memory Functions]

User 1

User 1 (Children Function)

Press the 'User 1' button on the remote control. If you press the User 1 button, it will activate the Children function by default.

- This function can operate even when the seat sensor does not detect seating.
 - The default operation time for the Children function is 3 minutes (1 minute for cleansing + 2 minutes for drying).
- 1) Cleansing nozzle: Level 5
 - 2) 3-way water pressure: Level 1
 - 3) Air OFF, Wide ON
 - 4) Drying operation: 2 minutes
 - 5) Drying temperature: Level 2

User 1

User 1, User 2 Memory Function

You can save settings for two users using the 'User 1' or 'User 2' buttons on the remote control. The Rear cleansing/Front cleansing/Turbo cleansing functions, and settings for Water pressure, Nozzle, Hot water temperature, Drying temperature, Seat temperature, Move, Air+, and Wide additional functions can be selected and saved.

- By default, User 1 is set to Children, and User 2 is set to Null (no settings saved).

User 2

How to change User 1 button function

- If you press the 'User 1' and 'User 2' buttons at the same time, it will activate the User 1 function selection mode. After entering the User 1 function selection mode, you can switch between Children (Default) and User 1 (memory saved) by pressing the User 1 button.

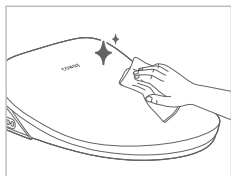
How to save memory function

- While using the Rear cleansing/Front cleansing/Turbo cleansing functions (Water pressure, Nozzle, Move, Hot water/Drying temperature, Seat temperature, Air+, Wide additional functions selected), press and hold the 'User 1' or 'User 2' button until the setting is saved.

How to use memory function

- In a seated position, select the 'User 1' button or 'User 2' button to use.

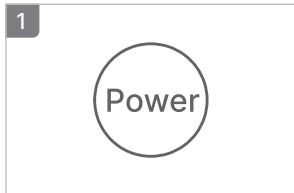
Main body



Method: Use a soft cloth or sponge with a neutral detergent to clean the appliance.

- Do not use detergents that contain thinner, benzene, chemicals, hydrochloric acid, and vegetable oils, or use a rough cloth.
- Unplug the power cord before separating and cleaning the nozzle and drying duct.
- Do not spray water directly on the main body of the appliance.
- Gently hold the nozzle without applying excessive force.

How to clean the nozzle



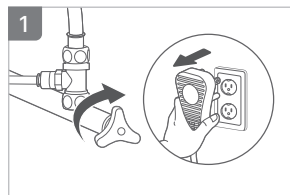
Press and hold the 'Power' button on the control panel to turn off the power.



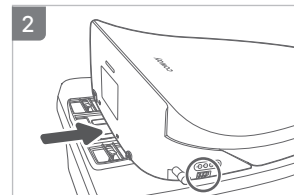
Press the 'Nozzle clean' button on the control panel.

- The cleansing nozzle extends forward and sprays the cleansing water.
- Clean the cleansing nozzle.
- After about 3 minutes of cleansing, the cleansing nozzle will automatically return to its position.

How to disassemble the appliance

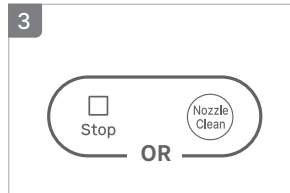


Unplug the power cord, and then close the water supply valve.



Pressing the button on the lower right area of the appliance, hold both sides of the appliance and pull it forward to separate it from the fixing plate.

- When disassembling the appliance, make sure to unplug the power cord and disconnect the bidet hose.



To stop cleaning in the middle, press the 'Stop' button or 'Nozzle clean' button.

- The cleaning operation will stop.

Automatic UV nozzle care

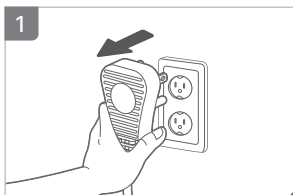
Self-care is performed for 30 minutes when the seat is detected 12 times or seat occupancy is disabled after not being used for 36 hours.

(During UV nozzle care, Care LED turns on)

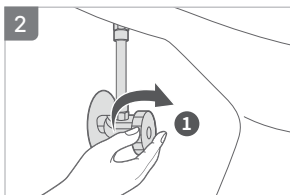
- You can manually add this operation by pressing the button.

How to clean filter

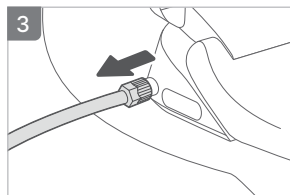
Clean the filter.



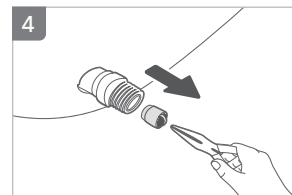
Unplug the power cord.



Close the water supply valve ①.

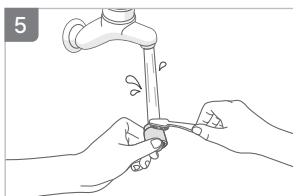


Disconnect the bidet hose from the appliance.



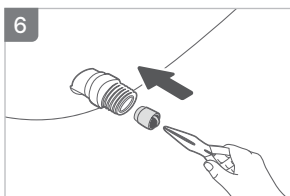
Detach the mesh filter from the water inlet.

- Flat-nose pliers can make detachment easier.



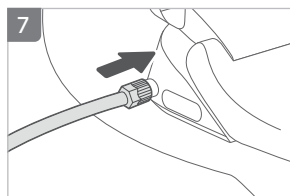
Shake the mesh filter under running water to clean it.

- Using a brush can effectively clean the filter.
- Avoid excessive cleaning of the mesh filter. It may cause mesh filter damage.

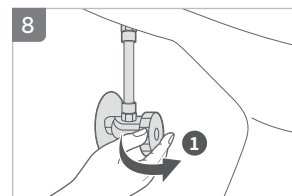


Insert the mesh filter into the water inlet and reassemble the hose.

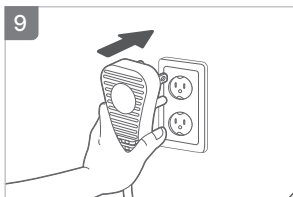
- Make sure to push the mesh filter all the way in.



Connect the bidet hose to the appliance.



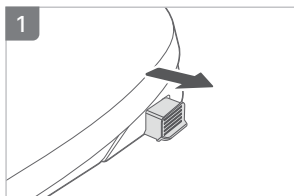
Open the water supply valve ①.



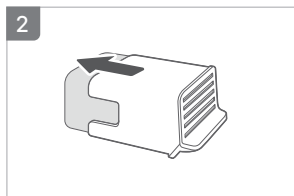
Reconnect the power plug.

3 Replacing the deodorizer filter

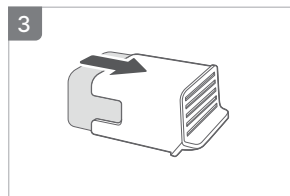
How to replace filter



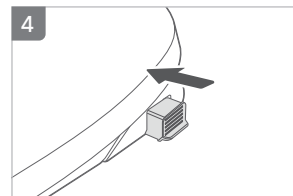
Remove the duct filter.



Remove the deodorizer filter from the duct filter.



Assemble the new deodorizer filter.



Assemble the duct filter to the body frame.

Check the appliance regularly to ensure safe use.

Power

- Is the indicator turning 'on' and 'off' as you move the plug when power is connected?
 - Is a part of the power plug hotter than usual?
 - Is a part of the power cord disfigured, discolored, or damaged?
- If the above problem occurs, stop using it immediately and contact the service center.

Display

- Is the appliance's display blinking?
- If abnormal blinking occurs, contact the service center immediately.

Sound

- Is the appliance making abnormal sounds?
- If abnormal sounds are heard, contact the service center immediately.

The bidet may operate abnormally due to minor causes because the user is unfamiliar with using the appliance. Check the following or contact the service center if the problem persists.

The appliance is not working.

Power plug	Check that the power plug is connected to a 120 V ~ 60 Hz outlet.
Power failure	Check if the power supply is off.
Power	Check if the power of the control panel is turned off. See if the buttons other than the power button work normally. If another button is pressed, it is not powered up.
Lock mode	The seat sensor lock mode is enabled by default, and the buttons do not work unless the seat is occupied.

There is no water stream.

Water supply valve	Check if the water supply valve is locked.
Nozzle	Check if the nozzle is clogged with foreign matters. Brush the nozzle hole with a toothbrush and get rid of foreign matters.
Water supply cut off	If there is no water stream immediately after installation, please check if water supply is cut off.

The water stream is too weak.

Water pressure	Check if the water pressure is set too low. Adjust the water pressure accordingly.
Nozzle	Check if the nozzle is clogged with foreign matters. Brush the nozzle hole with a toothbrush and get rid of foreign matters.

The bidet may operate abnormally due to minor causes because the user is unfamiliar with using the appliance. Check the following or contact the service center if the problem persists.

The seat or cleansing water is not warm.

Temperature control button	Check if the Seat/Hot water temperature control buttons are set to 'off'. Press the Seat/Hot water temperature control button to adjust to a comfortable temperature.
----------------------------	--

Drying air is cold.

Drying temperature control is set to 'off'.	Check if the drying temperature indicator is off. If so, turn on the function by pressing the button to adjust to a comfortable temperature.
---	---

Water comes out of the nozzle.

T-shaped connector	Check if the rubber packing is inserted into the T-shaped pipe and fix the nuts again.
Bidet hose connection	Make sure the bidet hose is fully inserted into the connection.

Water comes out after stopping bidet operation.

After cleansing	Water coming from between the nozzles after cleansing is for cleaning the nozzles. Therefore, it is not a malfunction.
Nozzle cleaning	Sometimes, water drops from around the nozzles fall into the toilet. The water drops from the bottom of the appliance after cleaning the nozzles may drop afterwards. This is not a malfunction.

The appliance makes a sound.

Buzzing noise

After plugging in the power, a buzzing noise can be made from the main body. This is part of the nozzle position initialization process and not a malfunction.

Buttons do not function when pressed.

Seat sensor

It may not function properly when not seated due to the default setting of the seat sensor lock mode.

I hear a ringing sound during Rear cleansing/Front cleansing/Turbo cleansing

Water supply error

Check if the water supply valve is properly open.

[Troubleshooting]

1. Check if the water supply valve is open.
2. Contact the service center if the problem persists despite troubleshooting.



- The appliance has a default power saving system that switches to Standby mode when not in use.
- The system can be disabled in the special mode. When disabled, the power saving function is off.

Item		Bidet	
Product name		Coway Bidetmega	
Model		BIDETMEGA 500S(E)/500S(R)	BIDETMEGA 400S(E)/400S(R)
Rated voltage		120V~ 60Hz	
Power consumption		1,450 W	
Power plug		1,500 mm	
Water supply pressure		0.1 MPa - 0.68 MPa	
Product size		390 mm X 532 mm X 134 mm (E) 390 mm X 497 mm X 134 mm (R)	390 mm X 532 mm X 134 mm (E) 390 mm X 497 mm X 134 mm (R)
Product weight		4Kg (E) / 3.9Kg (R)	3.9Kg (E)/ 3.8Kg (R)
Warm water cleansing device	Cleansing	Max 0.60 L/min, nozzle auto self-washing function	
	Bidet	Max 0.60 L/min, nozzle auto self-washing function	
	Rated time	About 2 minute for cleansing, about 2 minute for bidet	
	Water pressure control	Mycom control, 5-level adjustment	
	Warm water temperature setting	4 levels (off: room temperature, weak: 30 - 42°C)	
	Maximum hot water power consumption	1,540 W	
	Safety device	Temperature sensor, temperature fuse (overheat prevention)	
Warm wind drying device	Warm wind temperature setting	4 levels	
	Rated time	Approx. 2 minutes for drying	
	Heater power consumption	180 W	
	Safety device	Bimetal, temperature fuse (overheat prevention), relay	
Heated seat	Seat temperature adjustment (after seating)	4 steps (Off: room temperature, Low: 31 °C, Medium: 34 °C, High: 37 °C)	
	Heater power consumption	50 W	
	Safety device	Temperature sensor, temperature fuse (overheat prevention)	
Installation materials		1 Bidet hose, 2 Upper fixing brackets, 2 Upper fixing bolts, 1 Screw fixer assy (for remote control), 1 Battery (3 AAA batteries), 1 Installation adapter, 1 Stand for remote control, 1 Holder for remote control, 2 Stickers for remote control, 2 Screws (for holder and stand), 1 Double-sided tape for remote control	
Other functions		Soft opening/closing, Auto opening/closing (BIDETMEGA 500S(E)/500S(R)), User memory, Mesh filter, Mood LED, Toilet LED, Power saving mode	
Operating temperature		0°C - 40°C	
Remote control	Brand name	JOOWON TECH Co., Ltd.	
	Manufacturer/Country	JOOWON TECH Co., Ltd. / Republic of Korea	
	Equipment Name / Model	Specific low output wireless device (wireless device for a wireless data communication system) / BIDETMEGA 500S, BIDETMEGA 400S, BA42-A	

- There may be slight changes to the specifications for improving the appliance's performance.
- The above warm water temperature may vary depending on the input power conditions.

FCC Standard

User manual notice

This device complies with part 15 of the FCC Rules. Operation is subject to the following two conditions:

This device may not cause harmful interference, and (2) this device must accept any interference received, including interference that may cause undesired operation.

Information to the user.

Note: This equipment has been tested and found to comply with the limits for a Class B digital device, pursuant to part 15 of the FCC Rules. These limits are designed to provide reasonable protection against harmful interference in a residential installation. This equipment generates, uses and can radiate radio frequency energy and, if not installed and used in accordance with the instructions, may cause harmful interference to radio communications. However, there is no guarantee that interference will not occur in a particular installation. If this equipment does cause harmful interference to radio or television reception, which can be determined by turning the equipment off and on, the user is encouraged to try to correct the interference by one or more of the following measures:

- Reorient or relocate the receiving antenna.
- Increase the separation between the equipment and receiver.
- Connect the equipment into an outlet on a circuit different from that to which the receiver is connected.
- Consult the dealer or an experienced radio/TV technician for help.

RF Exposure

This equipment complies with FCC radiation exposure limits set forth for an uncontrolled environment.

Changes or modifications not expressly approved by the manufacturer (or party responsible) for compliance could void the user's authority to operate the equipment

IC Standard

User manual notice

This device contains licence-exempt transmitter(s)/receiver(s) that comply with Innovation, Science and Economic Development Canada's licence-exempt RSS(s). Operation is subject to the following two conditions:

- 1) This device may not cause interference.
- 2) This device must accept any interference, including interference that may cause undesired operation of the device.

L'émetteur/récepteur exempt de licence contenu dans le présent appareil est conforme aux CNR d'Innovation, Sciences et Développement économique Canada applicables aux appareils radio exempts de licence.

L'exploitation est autorisée aux deux conditions suivantes :

- 1) L'appareil ne doit pas produire de brouillage;
- 2) L'appareil doit accepter tout brouillage radioélectrique subi, même si le brouillage est susceptible d'en compromettre le fonctionnement.

RF Exposure

This equipment complies with IC RSS-102 radiation exposure limits set forth for an uncontrolled environment.

Exposition aux RF

Cet équipement est conforme aux limites d'exposition aux rayonnements IC établies pour un environnement non contrôlé.

001

1237896

coway

www.coway-usa.com