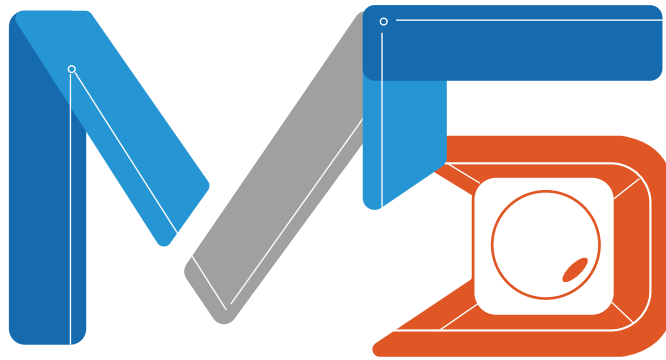


ANYSKI® USER MANUAL



2.5K Triple Way & 5G WiFi Dashcam



REGISTER WITHIN THE FIRST 30 DAYS

Scan this QR Code Using your iPhone or Android's Camera to start your Product Registration.

Or visit the link using mobile or PC/MAC:

peztio.com/apps/product-registration

WATCH GUIDE VIDEOS

WATCH GUIDE VIDEOS

Thank you for choosing an Anyski Dash cam.
The more familiar you are with your dash cam, the better effect you will have on the road. We therefore strongly suggest you watch our guide videos(the code & link below will re-direct to YouTube).

1 Scan the below code with your cellphone camera



2 Visit the below link directly via the browser

https://www.youtube.com/playlist?list=PLUKmX2ADhfGFYzRbjuMw5wbVymUrxz_6D



CONTACT US

NOT SATISFIED / NEED SUPPORT?

Dear customer,

If you are not satisfied with our product or have issues while using our product, please feel free to contact us before you return the product to us, we will try our best to help you!

HEY, FIND US HERE

OUR EMAIL ADDRESS:

support@anyski.net

Scan the code with your cellphone and you can email us directly!



OUR WhatsApp

Scan the code with your WhatsApp and chat with our support right now!



Typically we will reply to you in 24 hours on working day!

INDEX

INDEX

Must Read	1	App Introduction	26
Package Contents	6	Live Video Interface	26
Product Overview	7	Camera File Interface	27
Button Functions	8	Get Support from App	28
Screen Overview	8	Play Back Video on PC	29
Installation	9	Camera Settings on App	30
Insert/Remove a SD Card	10	Video Settings	30
Format the SD Card	11	Advanced Settings	32
Mount M5 on Windscreen	13	Parking Mode Settings	33
Connect Power Cable	14	Specifications	36
Install Rear Camera	15	FAQ	37
Final Adjustment	17		
WiFi Connection	19		
Download Cellphone App	20		
Authorize App Permission	20		
Connect to Camera WiFi	22		
Start to Use App Functions	25		

MUST READ



For your quick start and make sure your M5 dash cam works properly, please read the following notice carefully.




Power Issues

Please keep the M5 dash cam connected to the provided cigarette lighter charger for daily use, as it is not a battery-powered camera. If your car does not have a cigarette lighter port, please **contact us** for a compatible USB TYPE C cable and connect to the power port that can reach 5V/2A output, otherwise, issues may occur to this 3-channel dashcam.



Memory Disk Included

A 64GB SD card is included in this package. The SD card is already inserted into the M5 dashcam by default, if yours does not have an SD card, please reach us for replacement.

For the first time boot up, M5 dashcam will prompt 'Please format the SD card', please single press Power BUTTON  or connect the app to process the format then the camera will start recording automatically.

If you consider the provided SD card's capacity is too small, you can upgrade it with a larger one from Amazon. This M5 dashcam can support up to 256GB memory, but it should be a SAMSUNG or PNY Class 10, U3 speed Micro SD card. We recommend you search **B09WB1857W** on Amazon. Or use the Amazon App or your cellphone camera to scan to code to purchase the larger capacity SD card for M5 dashcam storage extending.



MUST READ



WiFi Connect

The WiFi of M5 dash cam will turn on as the dash cam power on, please join the WiFi hotspot of the M5 dash cam following the information below:

WiFi Name: **Peztio-M5-****** Default Password: **12345678**



Parking Mode

If you need to use the 24-hour parking monitoring function, you can get a Type C hardwire kit through our ongoing promotion. Please email or text us via email address or WhatsApp.

Or buy separately at the link:

<https://www.amazon.com/dp/>

OPTIONAL



Stop Recording in Parking Mode?

Some customer found their M5 dash cam stops recording even with parking mode engaged, that's because when the voltage of your car's battery drops, the hardwire will cut off the power supply of the M5 dashcam to ensure that you can start the ignition the next time you enter the car again. This is a function to protect your battery to avoid the trouble of your car not starting. In other words, the larger the battery capacity of your car, the longer it can support the M5 parking mode. For ordinary cars, their battery capacity can support the M5 dashcam recording for more than 10 hours. If you drive every day, you won't have to worry about this issue.

MUST READ



WiFi Disconnect?

This issue may happen to iOS Carplay / Android Auto users- by default, the mobile phone prioritizes the connection with Carplay or Android Auto, making it challenging to establish a connection with the camera. To successfully connect the camera, please follow these steps:

1. Disable your mobile phone's Bluetooth.
2. Disconnect from any existing WiFi connections.
3. Turn off your car and ensure your mobile phone is no longer linked to Carplay or Android Auto.
4. Restart your car and then connect the camera with your phone.

Generally, it's advisable to maintain the priority connection with Carplay or Android Auto. The dash cam will continue recording automatically without needing to connect to your cellphone's WiFi, functioning as long as it has a power source.



No internet?

Once you connect to Peztio-M5-**** WiFi, it will say 'No internet connection', which is fine and please select 'Keep trying wifi'. But you can not use the internet data at this moment, if you want to use the phone network,(for music, navigation etc.) just disconnect the camera WiFi. **The camera will continue to record even when it is not connected to your cellphone. In other words, you don't need to connect to the dash cam WiFi all the time.**



No Rear Image

If the rear camera video can not show up when you using the app, please make sure the socket is completely inserted into the main camera, if you have not completely insert the plug into the main camera, the rear image will show black screen, **contact us** if it still not working.

MUST READ




Drain My Car's Battery?

Some customers(using the provided car charger) may find the M5 dash cam will drain their cars' battery after they park the car for a whole night, this issue happens when your car does not cut the power supply after you shut down the car (while other models do). So we recommend you connect the dashcam charger with another port from your car that can cut the power after your key is off in this situation. **If there is no ideal port from your car, please contact us for a hardwire kit as this kit can cut the power to the dash cam when it detects the battery voltage drop and retain enough power for the next start.**





Video Miss?

- (1) M5 dashcam has a Loop Recording function, it will delete the oldest files and record newer files when the SD card is full except for the locked video files. **We recommend you single press Power BUTTON  to lock the video manually when an event happens in case the event does not trigger the Gravity Sensor from locking, M5 will prompt 'Video Locked' when it does.**
- (2) For the event video lock by you manually or by the Gravity Sensor, it will be saved in the folder named 'Lock' from app, please pay attention to that as you can not find the event videos from normal recording folder.



Can't find M5 WiFi

M5 dash cam by default will give 5GHz WiFi signal, which some old version cellphone may not support, if you can not find the M5 WiFi, please hold the POWER BUTTON  for 3 seconds then release, the M5 WiFi switch to 2.4GHz (will show on the display logo )signal which is compatible with old version cellphone, but the data transfer speed will decrease comparing to 5GHz signal.

MUST READ



Constantly on & off

If the camera comes freezing, lagging, or only recording video for a few seconds then power off, this is the SD card issue, NOT the camera issue. Please format the SD card to have a try (**see page 11**). If the issue remains after you get the SD card formatted, please replace the SD card with a new one as it may reach its life span after so many times erasing and loading data by the M5 dashcam. If you have no idea how to get resolve, please feel free to contact us.

Find us here for any issues, we will reply in 24 hours!



[*support@anyski.net*](mailto:support@anyski.net)

Scan the code with your
cellphone and you can
email us directly!



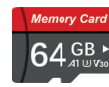
Scan the code with your
whatsapp and you can
chat us directly!

PACKAGE CONTENT

PACKAGE CONTENT



M5 Dashcam



64GB SD Card Included



Electrostatic Film



Car Charger



Rear Camera



Wiring Tools



User Manual



Warranty Card

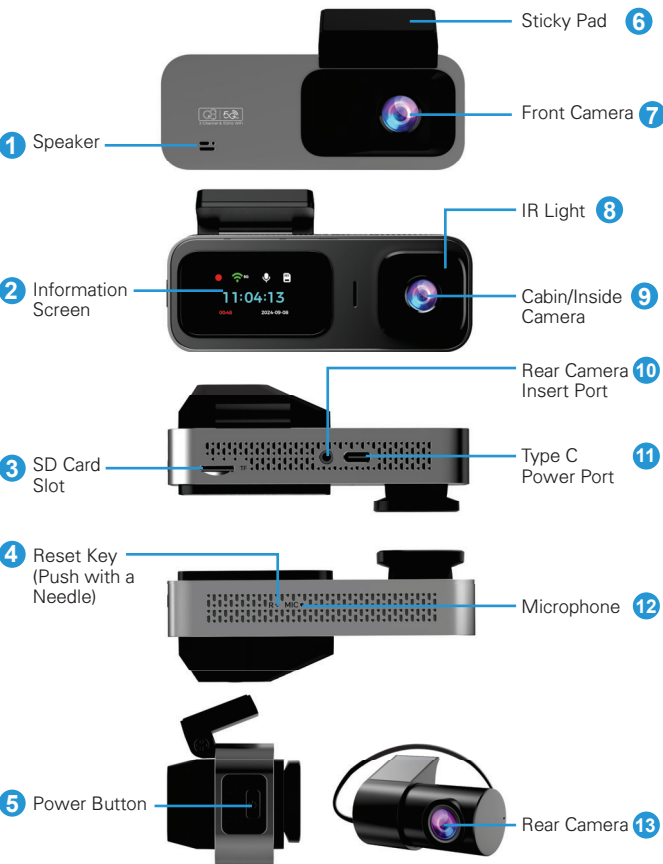


1. 64GB SD card is included in Package, if you consider the provided card's capacity is too small, you can get a larger one from Amazon. We suggest inserting a SAMSUNG / PNY Class 10, U3 speed micro SD card(up to 256GB) into this M5 dashcam. To make a purchase, please simply search for **B09WB1857W** on Amazon.

2. If there is no cigarette lighter port in your car, please email us support@anyski.net to get a USB C cable from us.



PRODUCT OVERVIEW

PRODUCT OVERVIEW

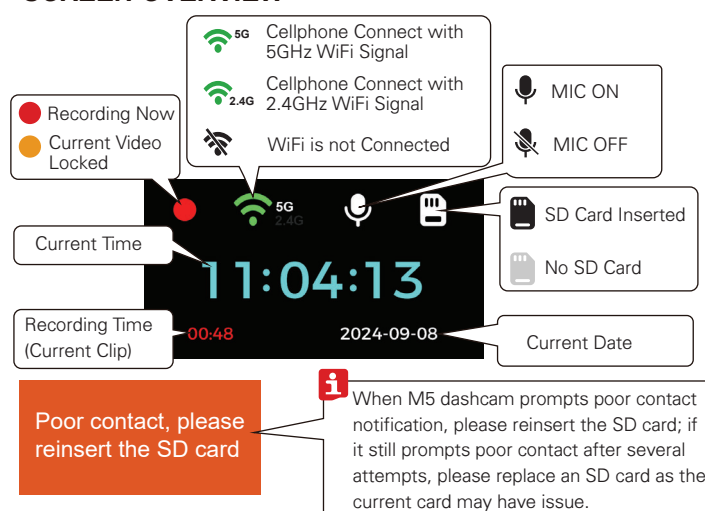


BUTTONS FUNCTION & SCREEN OVERVIEW

UNDERSTANDING BUTTONS

POWER BUTTON	
	1 Single Press While Recording- to Lock the Current Video.
	2 Hold for 3 Seconds then release: Switch the WiFi Signal between 5GHz / 2.4GHz.
	3 Hold for 7 Seconds: Restore the setting to factory default.
	Single Press to process format when the M5 prompts 'Please format the SD card'.

SCREEN OVERVIEW



INSTALLATION



POWER REQUIREMENT

As this M5 dashcam is a 3-channel system with a high resolution of up to 1440P-2.5K, along with WiFi function, it requires a more powerful power source to drive this system(compared to a normal 5V/1A). We strongly recommend you use the car charger that comes with this package. If your car does not have a cigarette lighter port, please **contact us** to get a TYPE C cable and insert it into a 5V/2A USB port. If you use a normal 5V/1A port to power this camera, issues may occur.

INSTALLATION



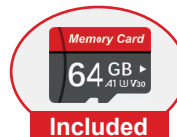
Our default settings of the M5 dashcam allow you to use the camera as soon as you get it without modifying any settings. You can also scan the code on the right to watch the installation video guidance for your M5 dashcam(will redirect to YouTube).



SD Card Installation / Removal

1

A 64GB SD card is included in this package. The SD card is already inserted into the M5 dashcam by default, so you can skip this step directly. If yours does not have an SD card, please **reach us** for an SD card replacement.



Included

INSTALLATION

1 *Install the SD Card*

Turn off the M5 dashcam before inserting the SD card. Aligning the brand logo of the card facing towards the screen of the camera. Then push the memory card into the card slot, until a "click" sound is heard in the card slot, indicating that the memory card is inserted properly.



2 *Remove the SD Card*

To remove the SD card, please gently push its edge inward until it clicks first, after it pops out, please pull it out of the slot.



1. Never remove the SD card while the camera is on, the camera will shut down immediately and may cause video damage.
2. Please note that every SD card has its life span, when your M5 keeps turning on/off frequently and the videos are not saved, your SD card may reach its life span, please replace a new SD card.



MEMORY EXTENDING

If you consider the provided SD card's capacity is too small, you can extend the memory with a larger one from Amazon. This M5 dashcam can support up to 256GB memory. We recommend you select a SAMSUNG or PNY brand, Class 10, U3 speed Micro SD card. We recommend you search **B09WB1857W** on Amazon.

RECOMMENDED

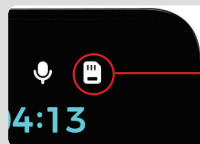


Format the SD Card via M5 Dashcam

2




For the SD card inserted into the M5 dashcam for the first time (or the first time boot up you just take it out from the package), the M5 dashcam will keep prompting 'Please format the SD card' and the SD card icon on the screen will keep flashing, you can choose any one of the following 2 methods to process the format and get the M5 camera start recording.

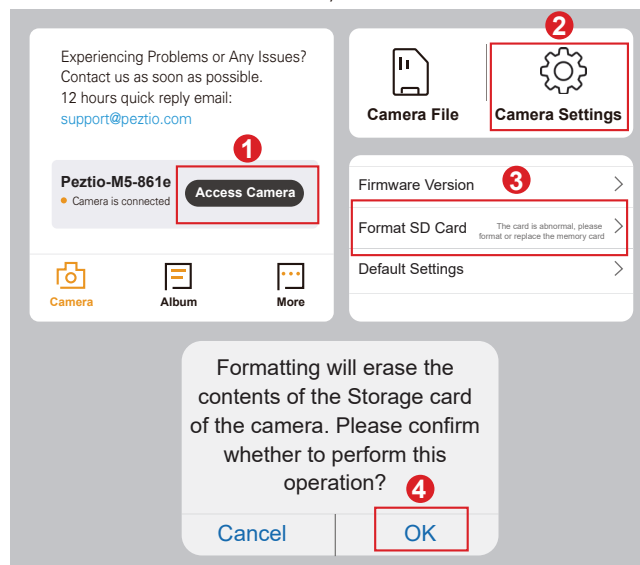


Keep Flashing

INSTALLATION

1 Single Press the POWER BUTTON  to process format then wait for seconds, the M5 dashcam will prompt 'Start Recording' after the format processed.

- 2**
- Connect Peztio APP and Access Camera (See Page 19).
 - Click the "Camera Settings"
 - On camera settings page, scroll down until you see "FORMAT SD Card", then choose "Format SD Card", and click "OK" to confirm to format the memory card.

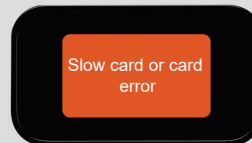




Slow card or card error

- For most situations, the M5 dashcam will auto-start recording after it finishes the SD card format. But if you insert a defective SD card or a low-speed card that can not reach Class 10 U3 speed, the M5 dashcam will prompt a 'Slow card or card error' notification. Please replace an SD card that works well and reaches Class 10, U3 speed(256GB Max) in this situation.
- If you have no idea how to get this error resolved, please **contact us** for help:

support@anyski.net



Mount the Main Camera to the Front Windscreen 3

1 Installation Area

Most of our customers choose to install their M5 dashcam next to the rear view mirror and close to the passenger side. Park your car in a safe and well-lit area before you start the installation.



INSTALLATION

2 *Clean the Area & Stick the Electrostatic Film*

Please use wet & dry tissues to repeatedly wipe the place you choose to install the recorder in order to clean the dust particles on the windshield and the grease evaporated. Then stick the electrostatic film on the place.

3 *Connect the Power Cable*

Use the power cord to connect the TYPE C Power Port of the product to the car's cigarette lighter socket with the package to run the cable through the A-Pillar. The cigarette lighter port usually is in the glove box of your car. You can use the wiring straps to help you run your cable on the front windscreen.

Stick it on the windscreen, and fasten the wire harness underneath.



i *FOR YOUR SAFETY*

- For the car has side curtain airbags, please run the cable along the window carefully. Please make sure your cable won't obstruct the airbags take effect.

INSTALLATION

Rear Camera Installation

4



Please note that the rear camera of this M5 dashcam is not waterproof / dustproof, so it can be only installed on the back windscreen of your car.

1

Installation Area

Please install the rear camera in the upper middle of the rear windshield in the car. This will make it easier to arrange the wiring harness and will not obstruct you from viewing the rear through the rearview mirror.



2

Clean the Area & Stick the Electrostatic Film



Please use wet & dry tissues to repeatedly wipe the place you choose to install the recorder in order to clean the dust particles on the windshield and the grease evaporated. Then stick the electrostatic film on the place.

3

Stick it in Place

Remove the film of the glue then you can stick it in the mounting area you desire. Please keep the sticky pad upward, otherwise, the rear videos you record will be upside down.



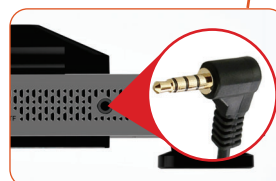
INSTALLATION

4 *Connect the Rear Camera to Main Camera*

Run the rear camera cable as in the picture below, the rear camera cable will go through the C-pillar, B-pillar, and A-pillar of the car body, and finally reach the main lens. You can use the included crowbar to tuck the wire into the interior sealing strip to hide the wire. The wiring straps to help you run your cable on the rear windscreen.



i Please fully insert the rear camera socket into the 'AV' port from the main camera to ensure the videos from rear camera can be received.



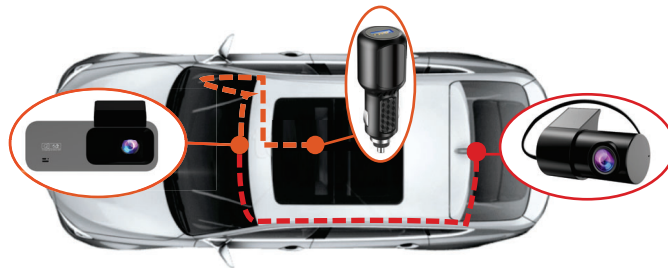
i *ABOUT ELECTROSTATIC STICKER*

(1) We design the electrostatic sticker to attach to the windshield first, then stick the bracket with 3M Adhesive on the electrostatic sticker. You can easily readjust location by sticking the 3M Adhesive on electrostatic sticker and peel it off.

(2) Re-sticking may weaken the adhesive strength of the tape and cause it to fall off. If you need more accessories, please CONTACT US.

4 Wiring Effect


Congratulations, you have now completed the wiring of the M5 dashcam. Please refer to the picture below to confirm again whether your wiring is correct.



Final Adjustment and Test

5

1 Start the Ignition

Start the ignition of your car, and see if the M5 dash cam boots up normally. For the first time boot up the M5 dashcam will keep saying 'Please format the SD card', just press POWER BUTTON , and this M5 dashcam will format the SD card itself and start recording.

i If your M5 dashcam can not power on normally or have 'Memory error' issue, please contact us for help:

Our email:
support@anyski.net



Our Whatsapp

INSTALLATION

2 *Adjust the angle*

Adjust the angle of the front, inside, and rear camera to make sure that the camera can capture the full image and is not obstructed by window tint or any other objects, we recommend you connect the M5 dashcam to your cellphone app first, then adjust the angle of each camera with reference to the live video.



3 *Remove M5 From Your Car*

For the situation when you want to remove the M5 dash cam from the windshield, please hold the camera and disassemble it from the mount.



4 *Date & Time Settings*

After you successfully connect your cellphone with the dashcam via WiFi, M5 dashcam will auto sync the time with your cellphone, and you don't need to set the time via the dash cam yourself.

5 *Format SD Card Regularly*

To keep the SD card clean and smooth operation, we recommend you format the SD card via the dashcam app every 2 weeks, see page 11 of this booklet to process.

WIFI CONNECTION



THINGS YOU HAVE TO KNOW

WiFi Function

M5 dashcam has built-in WiFi module, so you can use your mobile phone to wirelessly pair with the camera through the WiFi, and instantly get the video from the dash cam. Apart from that, you can easily watch the live feed, view, download and share videos with family and friends. In summary, just like you connect a Bluetooth speaker to your smartphone for wireless music playback, the dash cam uses a WiFi signal (instead of Bluetooth) to pair your smartphone to the M5 dashcam in the same way.

Does not Support Monitor Remotely

M5 dashcam does NOT support remote monitor. Because the WiFi signal will not be turned on when the car is not powered on and the valid range of WiFi is 10FT. Therefore, the remote monitor function cannot be realized if both above conditions are not met.

Does not Have to Connect Phone All the Time

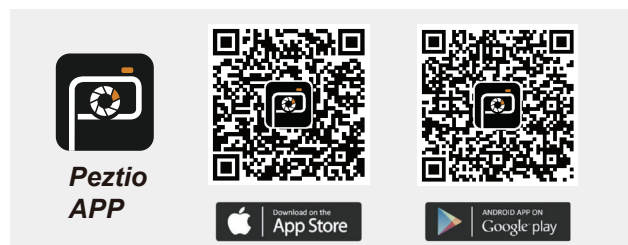
M5 dashcam will auto start recording and save the videos in the SD card once it is powered on. You don't have to connect the M5 dashcam all the time while you are driving. In reverse, you are not able to use the navigation or listen to the music from online app if you connect the M5 dashcam with your cellphone. So you don't have to connect the M5 dashcam with your cellphone all the time.

CONNECT TO APP

Download 'Peztio' app

1

Please scan the QR code of the relevant version below to download the APP and install it.



Or search for 'Peztio' in App Store or Google Play Store to download and install it on your phone.



Remain Power Supply

Please remain the M5 connected to the power while you are operating the WiFi function, otherwise the dash cam WiFi will become offline.

Authorize App Permissions

2

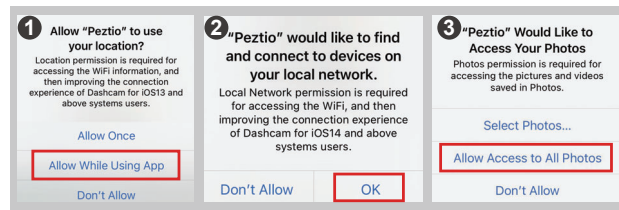
Just open the "Peztio" app you've downloaded, and authorize the permissions as below. When opening the app for the first time, please make sure to authorize the App with album, location, WLAN & cellular data, otherwise the Peztio app won't work correctly.

CONNECT TO APP



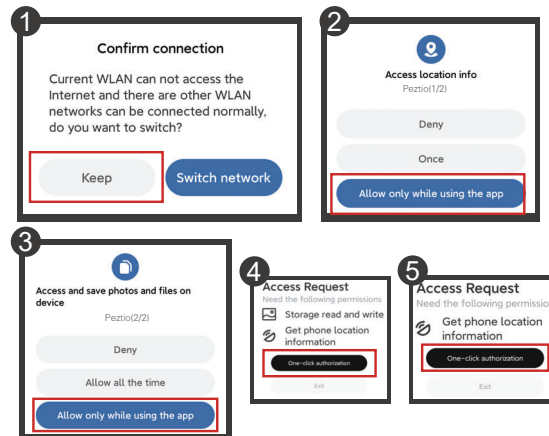
Reminder for iOS Users

If you get these notification windows while using the APP, ensure you choose "Allow" or "OK"



Reminder for Android Users

Please choose "Keep", "Allow" or "Authorization" when these prompts appear.

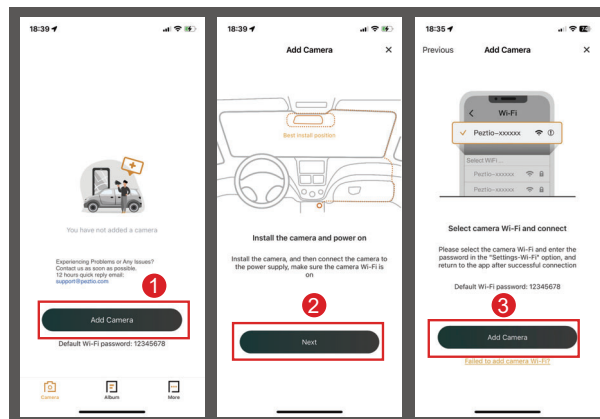


CONNECT TO APP

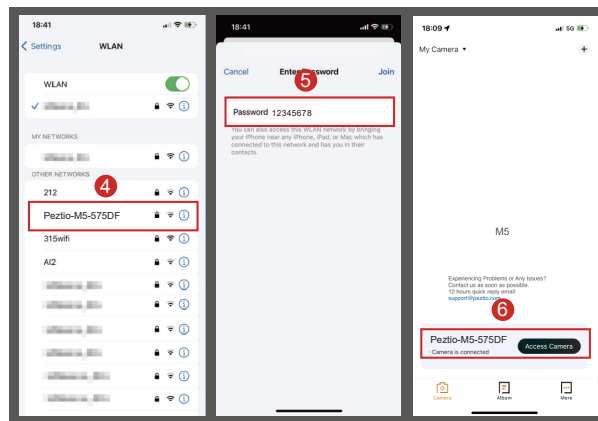
Connect to the WiFi

3

- When you successfully turn on the app, just simply press 'Add Camera' > 'Next' > 'Add Camera'
1 **2** **3**
- Then it will jump to the WiFi setting of your cellphone. Simply join the WiFi of M5 dashcam by going into your iPhone or Android Settings > WiFi > **Peztio-M5-******
4
- Then enter the default password: **12345678**. And join the network.
5
- Press 'Access Camera' to enter the live video of M5 dashcam
6



CONNECT TO APP



Keep Trying Wi-Fi

Once you connect to Peztio-M5-**** WiFi, it will say 'No internet connection', which is fine and please select 'Keep trying wifi'. If you want to use the phone network, just disconnect the camera WiFi. The camera will continue to record even when there is no WiFi connected.

The Wi-Fi network "Peztio-M5-5dfc" does not appear to be connected to the Internet

Do you want to temporarily use cellular data?

Use Cellular Data

Keep Trying Wi-Fi

CONNECT TO APP



Disconnecting issue for Carplay / Android Auto users:

This is because by default, the mobile phone prioritizes the connection with Carplay or Android Auto, making it challenging to establish a connection with the camera. To successfully connect the camera, please follow these steps:

1. Disable your mobile phone's Bluetooth.
2. Disconnect from any existing WiFi connections.
3. Turn off your car and ensure your mobile phone is no longer linked to Carplay or Android Auto.
4. Restart your car and then connect the camera with your phone.

Generally, it's advisable to maintain the priority connection with Carplay or Android Auto. The dash cam will continue recording automatically without needing to connect to your cellphone's WiFi, functioning as long as it has a power source.

Start to Use App Functions

4

Once your cellphone successfully join the WiFi hotspot of M5 dashcam, please simply get back to the 'Peztio' App, then the app will take seconds to identify your dashcam information and get it finished, once it is finished, you will see your dash cam name and able to click 'Access Camera' to start data transfer with your camera.

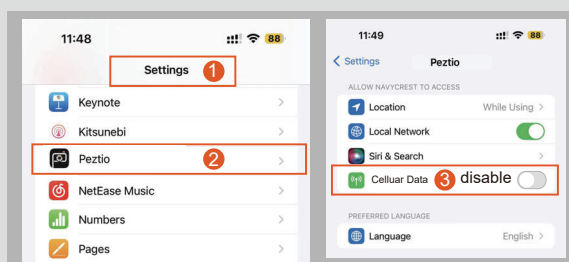
**WATCH GUIDE VIDEO**

Please scan the code to watch the M5 Dashcam WiFi connection video(will redirect to YouTube)

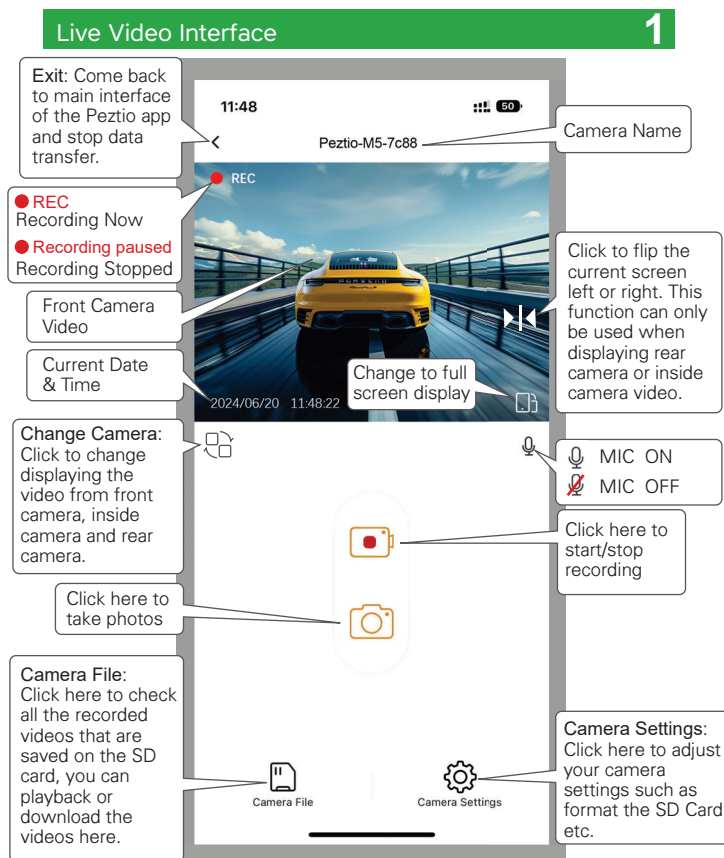
**CAN'T SEE PREVIEW VIDEO?**

The cellular data may cause the live feed not to be viewed. Please following the steps below to get it fixed

1. Go to the 'settings for your iphone'
2. scroll down until you find out the 'peztio'
3. click in peztio and disable the cellular data options



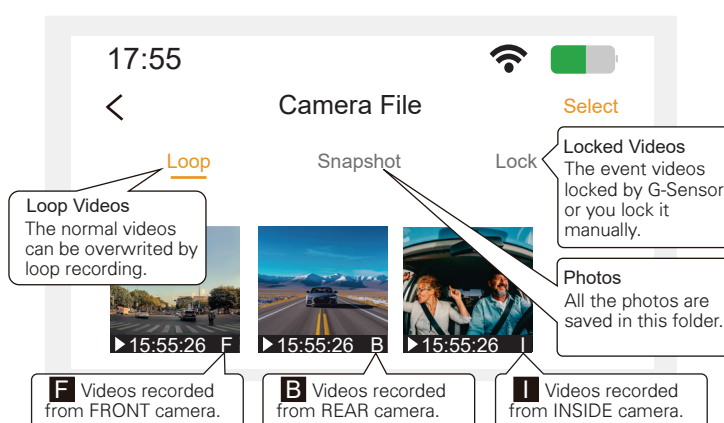
APP INTRODUCTION



Camera File Interface

2

By clicking the 'Camera File' from the last interface, you can playback and download the videos the M5 dashcam recorded. **Please note that different videos are saved in the different folders, if you want to check the accident videos or the video you locked, please click the 'lock' folder to check.**

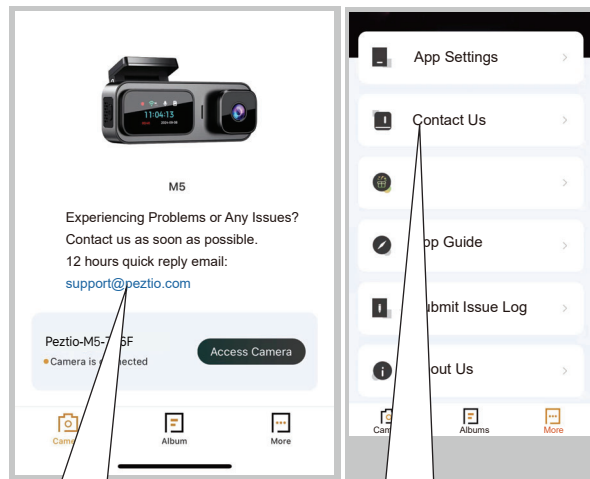
**FOR YOUR BEST EXPERIENCE**

- (1) Please download the videos if you need a more detailed and smoothly video, the preview resolution is at only 480P. For a real 2.5K front video experience, please use a monitor that support 2.5K resolution.
- (2) The downloaded videos / photos will be saved in your local albums.

APP INTRODUCTION

Get in Touch with Our Support From the App **3**

If you have any issues or need from our after-sale support, there are 2 ways for you to get in touch with us in 'Peztio' app. Typically we will reply to you in 24 hours on working days!



You can click this email address from the main interface of 'Peztio' app, then it will jump to the email app of your cellphone.

You can also click the 'Contact us' from the 'More' page. Then it will jump to the email app of your cellphone.

PLAYBACK VIDEOS

- 1** Besides playback videos from cellphone app, you can remove the SD card from M5 dashcam and insert it to computer directly (if your computer doesn't have memory slot, then you need to purchase a 'Micro SD Card to USB Adapter').



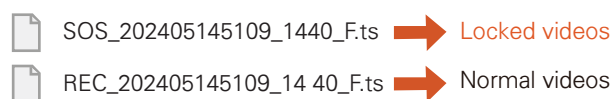
- 2** After you insert the SD card to your computer, please look for the added flash drive. You should be able to see drive named 'CarDVR'.



- 3** When you locate the added flash drive 'CarDVR', double click in it, then you will see 2 folders named 'pic' and 'record'. The photos are saved in the 'pic' folder and the videos are saved in 'record' folder.



- 4** When you want to find the locked videos, please find them from the video name starting with 'SOS'.



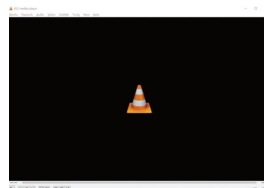
CAMERA SETTINGS ON APP



Use VLC Player to Play

The video format of M5 dashcam maybe not supported by your computer original video player. We strongly recommend you download a VLC Player to play the videos. You can get it free at

www.videolan.org



CAMERA SETTINGS ON PEZTIO APP

Video

1

Sound Recording

The M5 dashcam supports voice recording, you can activate it on camera settings to record the voice or turn it off to prevent the voice from being recorded.

- On (Default)
- Off

Resolution

Choose the resolution of the front lens you want according to your needs. The higher the resolution, the more storage space the video will take up.

- 2.5K (Default)
- 1080P

Anti Flicker

Here you should choose the frequency accordingly to your power supply specification used in your country based on your geographical location.

- 60 Hz (Default)
- 50 Hz

CAMERA SETTINGS ON APP

Speaker Volume

This feature allows you to adjust the volume of the speaker, and if you feel the volume of the speaker is too loud, you can turn it down or turn it off.

Voice contents:

- | | |
|------------------------------|------------------------------|
| 🔊) Factory default success | 🔊) Please insert the SD card |
| 🔊) Formatting is completed | 🔊) Start recording |
| 🔊) Mute off | 🔊) Start time-lapse video |
| 🔊) Mute on | 🔊) Stop recording |
| 🔊) Picture success | 🔊) Video locked |
| 🔊) Please format the SD card | |

OPTIONS:

- Off ● Low ● Medium-
● Medium ● Medium+(Default) ● High

Loop Record Options

The duration of each recorded video will be saved in the normal video folder according to the loop recording time you set. When the capacity of the normal video folder reaches 70% of the total, new loop recording files will automatically overwrite original loop recording files. After this function is enabled, the video file will automatically overwrite the loop, so as not to stop recording during the driving process.

- 1 minute (Default)
● 2 minutes
● 3 minutes



This function can free you from deleting the video manually once the SD card is full. This function may fail when you inserted a low-speed card into the dash cam, please insert a Class 10 U3 speed Micro SD card (not larger than 256GB) to make sure this function can work properly.

CAMERA SETTINGS ON APP

Time Stamp

You can choose whether to put the date watermark on the video.

- Off
- Date and Time (Default)

Interior Camera

For your privacy needs, you can disable the cabin camera from recording here.

- On (DEFAULT)
- Off

Advanced

2

Collision Sensing

G-Sensor is a 3-axis impact gravitational accelerometer which is designed to detect physical and gravitational forces on the camera.

While Video is Being Recorded: In the event when G-Sensor is triggered due to physical or gravitational impact force on the camera, the current loop cycle length of video file will be locked so it will NOT be deleted by loop cycle function.

- Off
- Low (DEFAULT)
- Medium
- High

Screen Saver Settings

If you don't operate the camera for a period of the preset time, the screen will auto-off but the recording will go on. You can also turn on this function if you don't want the screen disturb you from driving.

- Off (Screen Always On)
- After 10 seconds
- After 30 seconds
- After 1 minutes

IR Light Setting

This function is to control the IR night of the inside camera, if you turn it on, it keeps on all the time, if you turn it to auto, it will auto on while it detects the light is weak.

- Auto (DEFAULT)
- On
- Off

Parking Mode(Hardwire Kit Required)

3

**TYPE C HARDWIRE KIT REQUIRED**

This feature becomes accessible within camera settings only when the camera is powered by the hardwire kit. To enable this function, you'll require a Type C hardwire kit, available for separate purchase at <https://www.amazon.com/dp/>

Alternatively, you can contact us to obtain a free hardwire kit for connecting to the M5 by joining the promotion.

Parking Monitor

This functionality is specifically intended for use when your vehicle is parked. Once you've installed the dedicated hardwire kit and established the connection, you can activate the parking mode via the Peztio app. While your car is parked, if the camera detects a collision, it will activate automatically, record for one minute, and then deactivate. The resulting video will be safeguarded as an emergency file, preventing it from being overwritten by the loop recording feature.

- Off (DEFAULT)
- Low
- Middle
- High



This function requires a hardwire. Meanwhile, please make sure the Collision Sensing is turned on because it is triggered by the Collision Sensing. M5 dash cam will execute the time-lapse records as a priority for the situation when you turn on the time-lapse record and parking monitor at the same time.

CAMERA SETTINGS ON APP

24-HR Auto Parking Mode

This feature is designed to work while your car is parked. After installation of dedicated hardwire kit and connected, you can turn this function on. When you turn off your car, the camera will record 1 fps / 3fps / 5fps per second video until you turn on the car again. It's extremely saving power and capacity as the normal video is 30 frames per second while this time-lapse is on.

- Off (DEFAULT)
- Time Lapse 1 fps (Recommend)
- Time Lapse 3 fps
- Time Lapse 5 fps



When the timelapse recording got activated, the camera will give you voice alert stating "start timelapse video" when you turn off your car.

Parking Mode Duration

You can set a duration for parking mode, when the time is out, the camera will power off and go to collision sensing mode(when it detects a collision, the dash cam will power on again and record a 1 min video)

- Off (default, the dash cam will stay on parking mode till you start the car again)
- 12 hours
- 24 hours
- 48 hours

Genral

4

**Wi-Fi Name**

This feature will allow you to change WiFi name from the camera so you can set a favorite WiFi name.

Default WiFi Name
Peztio-M5-****

Wi-Fi Password

Here you can change the WiFi password as your preference.

Default password: **12345678**

Format

This feature will allow you to format inserted memory card, all the data will be deleted. Please backup the important videos before formatting.

Factory Reset

Here you can restore all the settings to factory default settings.

***Resetting the dash cam settings & reboot the dash cam are different.***

Resetting the dash cam setting.

You can click this 'Factory Reset' to restore all the camera settings to factory default, the camera hardware won't reboot.

Reboot the camera hardware.

When your dash cam becomes freezing and no buttons are responsive, rebooting the hardware may help. Please use the needle that came with the package or yours to push the reset hole of the dash cam, this will force a hardware restart, but will keep your previous personal settings.

SPECIFICATIONS

Screen	1.47 Inch IPS Screen
G-sensor	Built-in
WiFi	Built-in 5GHz/2.4GHz Dual Mode WiFi
Resolution	1440P-2.5K Front Camera FHD 1080P Cabin/Inside Camera FHD 1080P Rear Camera
Sensor	6 glass, 170 Degree Wide Angel Lens
Language	English, German, Japanese, etc
Video Format	.ts
Picture Format	JPEG
Power interface	5V/2A
Working Temperature	Working temperature -4°F to 167°F (-20 C to 75°C).

Frequently Asked Question

1 Can't View Live video on Peztio App?

The cellular data will cause the live feed not to be viewed. Please disable the "Peztio" cellular data of your cellphone.

Setting → Peztio → Disable the "Cellular Data"

2 Do I have to connect the M5 dashcam WiFi each time I drive in order to record the videos?

No, the dash cam will automatically record without connecting to your cellphone wifi. Camera will record as long as it has power.

3 Encountering issues connecting the camera while using Carplay/Android Auto?

This is because by default, the mobile phone prioritizes the connection with Carplay or Android Auto, making it challenging to establish a connection with the camera. To successfully connect the camera, please follow these steps:

1. Disable your mobile phone's Bluetooth.
2. Disconnect from any existing WiFi connections.
3. Turn off your car and ensure your mobile phone is no longer linked to Carplay or Android Auto.
4. Restart your car and then connect the camera with your phone.

Generally, it's advisable to maintain the priority connection with Carplay or Android Auto. The dash cam will continue recording automatically without needing to connect to your cellphone's WiFi, functioning as long as it has a power source.

FAQ

4 How to use the parking mode function?

To enable the 24 hours parking monitoring function on the M5 dashcam, you will require a Type C hardwire kit (NOT included in the package). You can find the recommended kit on Amazon by searching for . If you prefer to get the FREE hardwire kit from us by joining the promotion, please feel free to reach out to us via WhatsApp or email.

5 The camera does not power off even when the car is off and drains my battery?

This issue happens when your car does not cut the power supply after you shut down the car (while other models do). So we recommend you replace the dashcam charger with another port from your car that can cut the power after your key is off. **If there is no ideal port from your car, please contact us for a hardwire kit as this kit can cut the power to the dash cam when it detects the battery voltage drop and retain enough power for the next start.**

8 Not Showing rear video?

If the rear video is not shown on the display even if you have inserted the plug of the rear camera into the main camera, please push the plug into the socket harder as this problem is caused by the incomplete insertion of the rear plug. If you are sure the plug is firmly inserted in to the main camera and the issue is still, please contact us immediately.

7 Loop recording doesn't work.

(1) Please check your SD card version, this loop recording function requires a Class 10, U3 SD card within 256GB, otherwise your videos can't be saved or overwrite.

(2) Make sure your loop recording is on and format your SD card, then set the G-Sensor at low sensitivity, your SD card may have too much locked videos and loop recording can't overwrite with these videos.

6 Missing Parts / Need accessories from us.

You may need accessories from us while using the M5 dashcam or you may encounter missing part issue after you receive the package, don't worry, just email us or chat with our Whatapp, we will send them to you.

9 The video playback on Peztio APP is blurry.

Due to the limitation of WiFi transmission rate, the videos you watch is only 480P if you don't download the files. So we suggest you download the videos to your phone and watch them in local album. The downloaded front video resolution can be up to 2.5K.

10 Can't use navigation / listen music with online app while driving?

Once you connect to Peztio-M5-**** WiFi, it will say 'No internet connection', which is fine and please select 'Keep trying wifi'. If you want to use the phone network,(for music, navigation etc.) just disconnect the camera WiFi. **The camera will continue to record even when it is not connected to your cellphone. In other words, you don't need to connect to the dash cam WiFi all the time.**

11 Unresolve Issues?

If you encounter any unresolve issue while using our M5 dashcam, please contact us as soon as possible following the contacts below:

OUR EMAIL ADDRESS:
support@anyski.net

OUR WhatsApp
Scan the code with your
WhatsApp and chat with
our support right now!



Sincere Thanks

Dear customer,

Thanks for choosing our Anyski dashcam. As you are the most valuable customer of us, we provide 12 months warranty & life time customer care for you. **Please register**

- **your product on our website (following the steps below)** and we will provide the warranty service and customer care for you.

- **If you have any problem about our dash cam, please contact us via the email or whatsapp.** Typically we will reply in 24 hours and we will try our best to help, thank you!

Sincerely,

Anyski

REGIST YOUR 12 MONTH WARRANTY (CUSTOMER CARE)



REGISTER WITHIN THE FIRST 30 DAYS

Scan this QR Code Using your iPhone or Andriod's Camera to start your Product Registration.

Or visit the link using mobile or PC/MAC:
peztio.com/apps/product-registration



CUSTOMER SUPPORT

support@anyski.net

Scan to download the 'Peztio' APP

FCC WARNING

This device complies with part 15 of the FCC Rules. Operation is subject to the following two conditions: (1) this device may not cause harmful interference, and (2) this device must accept any interference received, including interference that may cause undesired operation.

Any changes or modifications not expressly approved by the party responsible for compliance could void the user's authority to operate the equipment.

NOTE: This equipment has been tested and found to comply with the limits for a Class B digital device, pursuant to Part 15 of the FCC Rules. These limits are designed to provide reasonable protection against harmful interference in a residential installation. This equipment generates, uses and can radiate radio frequency energy and, if not installed and used in accordance with the instructions, may cause harmful interference to radio communications. However, there is no guarantee that interference will not occur in a particular installation. If this equipment does cause harmful interference to radio or television reception, which can be determined by turning the equipment off and on, the user is encouraged to try to correct the interference by one or more of the following measures:

- Reorient or relocate the receiving antenna.
- Increase the separation between the equipment and receiver.
- Connect the equipment into an outlet on a circuit different from that to which the receiver is connected.
- Consult the dealer or an experienced radio/TV technician for help.

To maintain compliance with FCC's RF Exposure guidelines, This equipment should be installed and operated with minimum 20cm distance between the radiator and your body: Use only the supplied antenna.