

KUGU

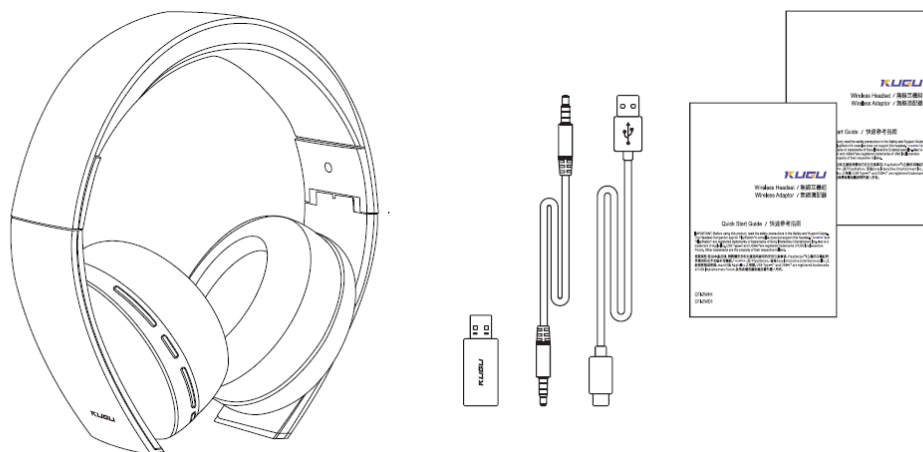
Wireless Headset/無線耳機組

Wireless Adaptor /無線適配器

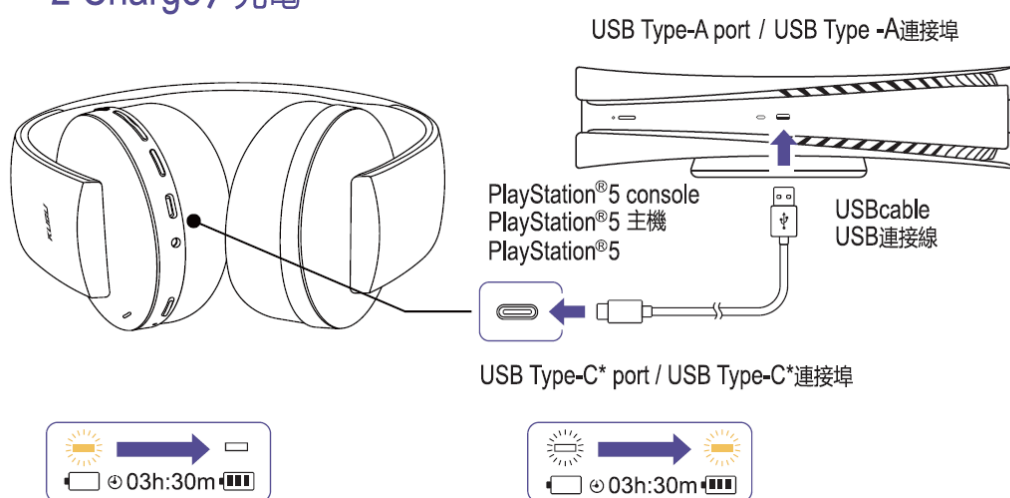
Quick Start Guide /快速參考指南

IMPORTANT: Before using this product, read the safety precautions in the Safety and Support Guide. The Headset can be indiscriminately adapted to Switch terminals. "KUGU" are registered trademarks of Shenzhen Chenweixin Plastic Electronics CO., Ltd. "PlayStation" are registered trademarks or trademarks of Sony Interactive Entertainment Inc. Mac is a trademark of Apple Inc. USB Type-C and USB-C are registered trademarks of USB Implementers Forum. Other trademarks are the property of their respective holders

重要資訊: 使用本產品前, 請閱讀安全和支援指南載明的安全注意事項。本耳機可無差別適配 PS5, PS4, Blue-Tooth 端, "KUGU" 是深圳市宸偉鑫塑膠電子有限公司註冊商標或商標, "PlayStation" 為 Sony Interactive Entertainment Inc. 註冊商標或商標。macOS 為 Apple Inc. 之商標。USB Type-C 和 USB-C 是 USB Implementers Forum 的註冊商標, 其他商標皆屬相關原作者權人所有。



2 Charge / 充電

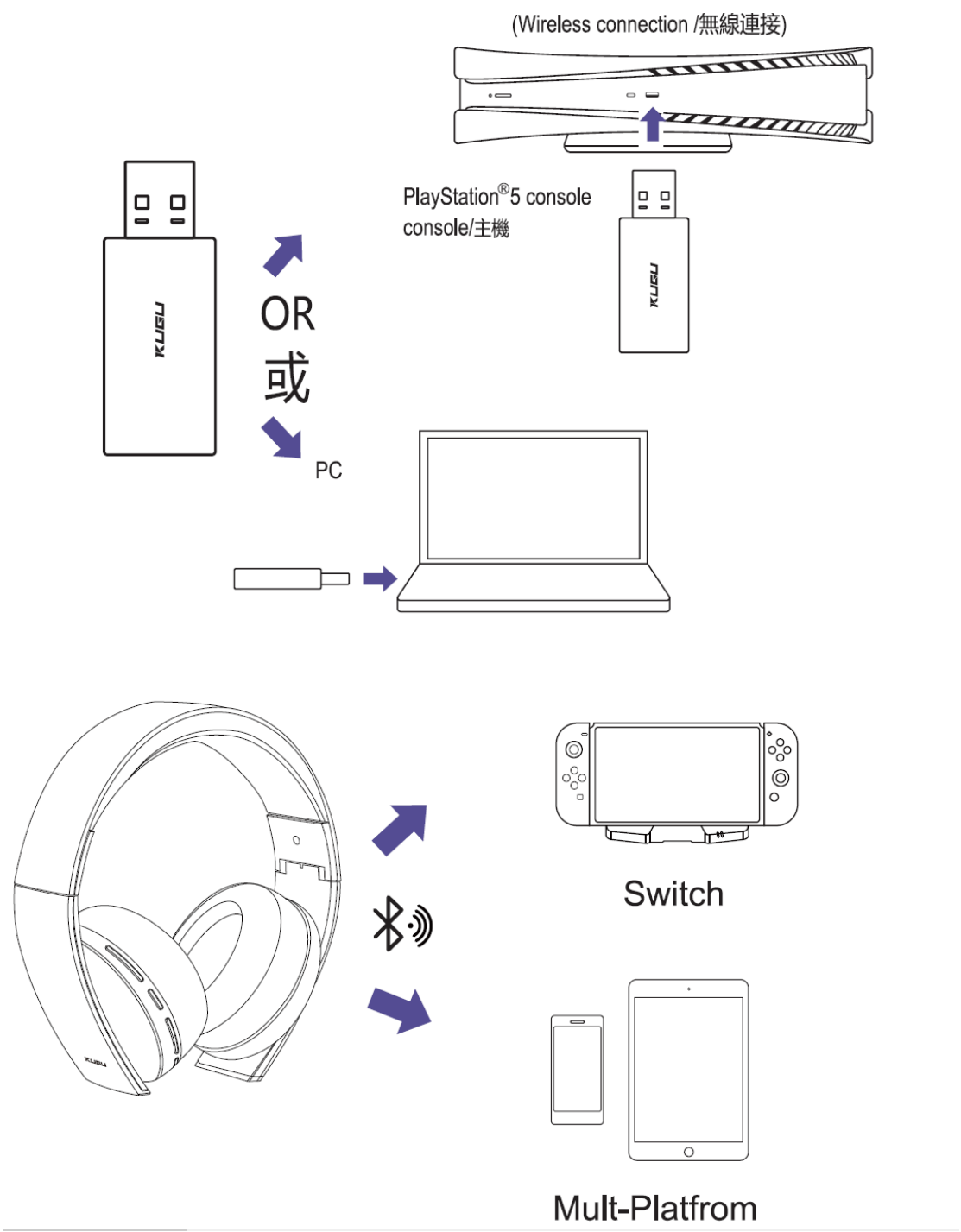


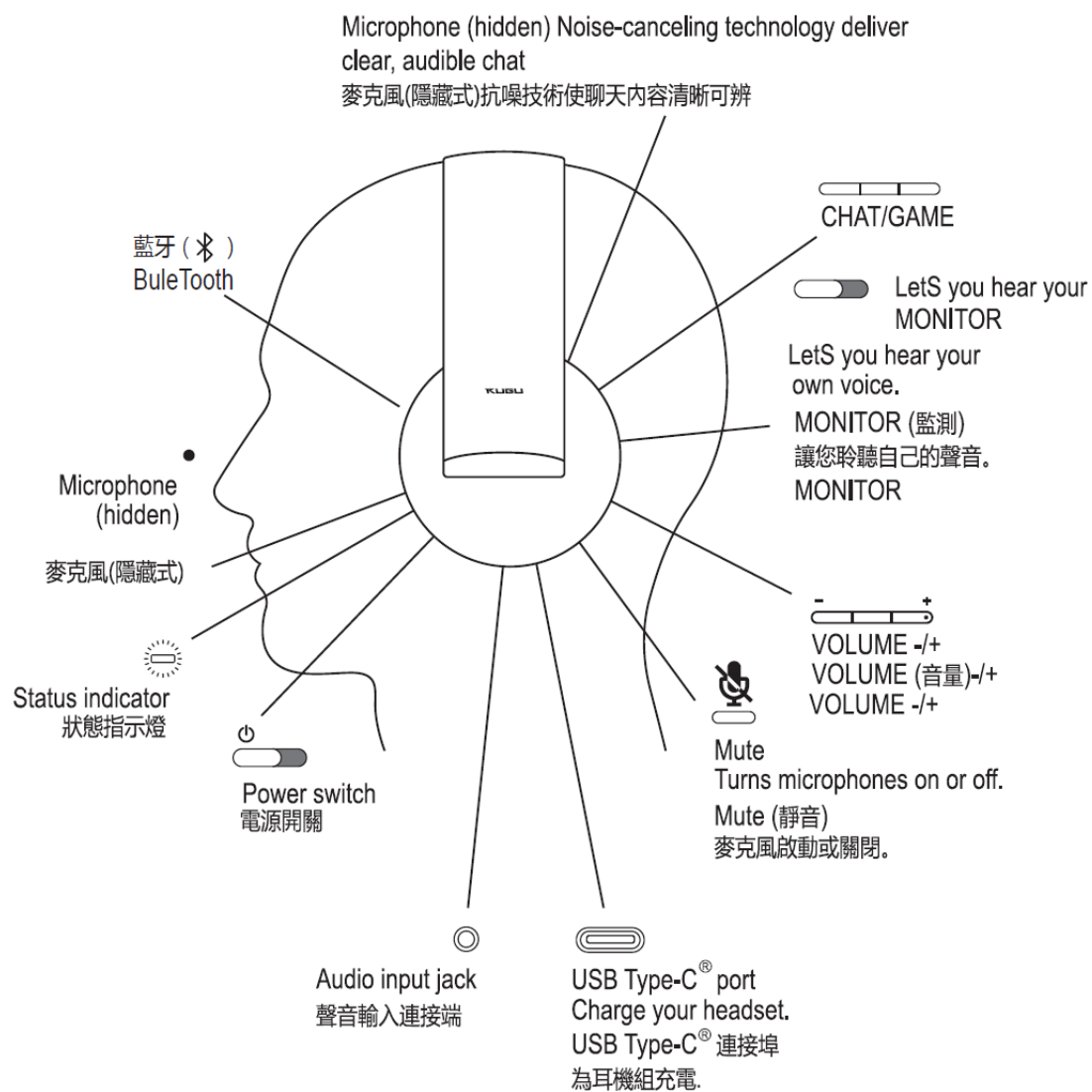
充電時,若耳機組並未與無線適配器連接,耳機組上的狀態指示燈會緩慢閃爍橘燈。若電力充滿,狀態指示燈會熄滅。

When charging while the headset is not connected to the wireless adaptor, the status indicator on the headset blinks slowly orange. When fully charged the status indicator turns off.

充電時,若耳機組與無線適配器連接,耳機組上的狀態指示燈會亮白燈。若電力充滿,狀態指示燈會閃爍一次橘燈,再持續亮白燈,表示仍與無線適配器連接。

When charging while the headset is connected to the wireless adaptor, the status indicator on the headset is white. When fully charged, the status indicator blinks orange once and then turns solid white to show it's still connected.







To make the game quieter than other players 使遊戲音量低於其他玩者的音量



To make other players quieter than the game 使其他玩者的音量低於遊戲音量

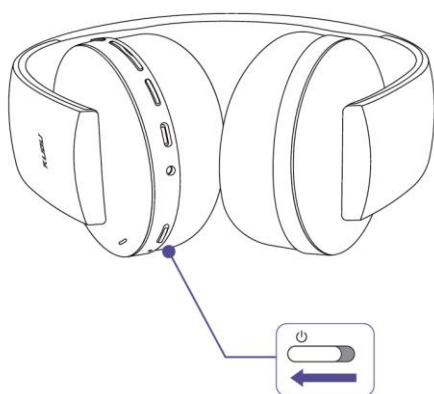


To hear how you sound to other players 聆聽您在其他玩者耳中的聲音



To stop players from hearing you 防止玩者聽見您的聲音

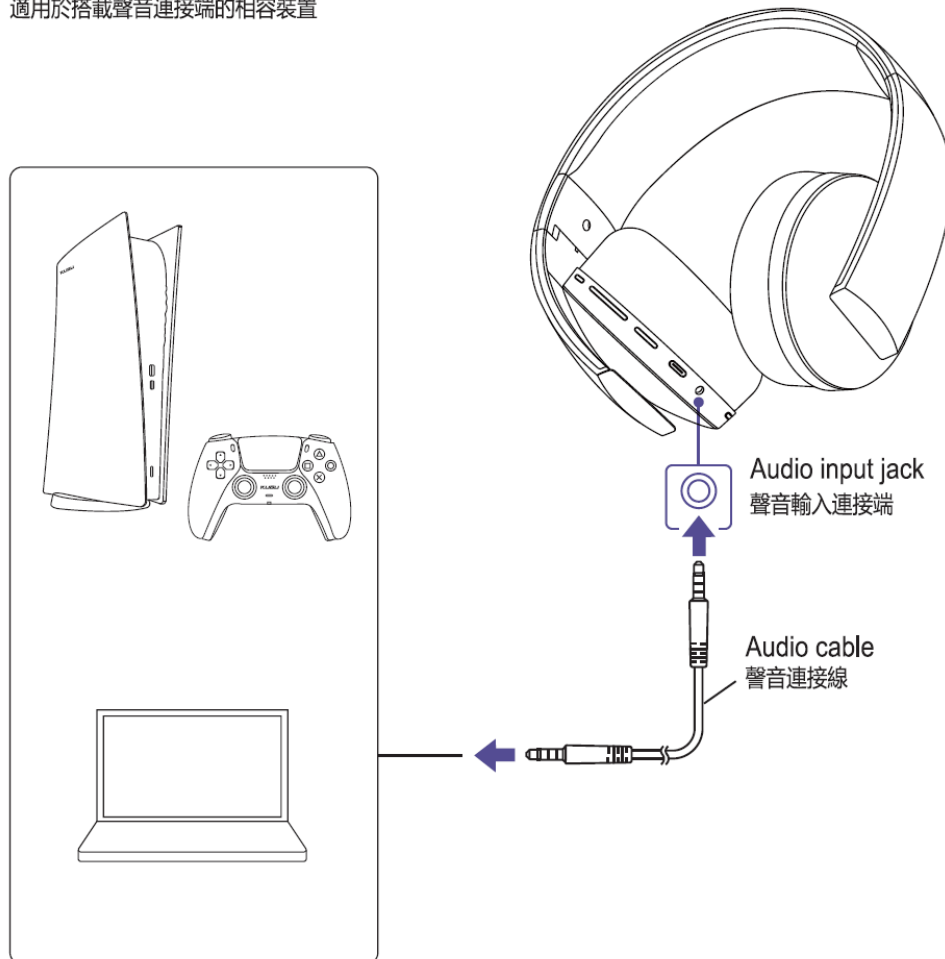
3 Turn On / 啟動



Other Devices

其他裝置

For compatible devices with an audio jack
適用於搭載聲音連接端的相容裝置



You can still use the headset to listen to game audio and chat with the microphones when you use the included audio cable. For example, if the headset battery runs out, you can continue gaming by plugging the headset into your wireless controller with the included audio cable. The included audio cable might not work with some devices. 使用隨附的聲音連接線時，您仍可以使用耳機組聆聽遊戲音訊並透過麥克風聊天。例如，當耳機組的電池沒電了，您可利用隨附的聲音連接線，將耳機組插入無線控制器以繼續游玩遊戲。隨附的聲音連接線可能無法用於某些裝置。

This device complies with part 15 of the FCC Rules. Operation is subject to the following two conditions: (1) this device may not cause harmful interference, and (2) this device must accept any interference received, including interference that may cause undesired operation.

Any changes or modifications not expressly approved by the party responsible for compliance could void the user's authority to operate the equipment.

NOTE: This equipment has been tested and found to comply with the limits for a Class B digital device, pursuant to Part 15 of the FCC Rules. These limits are designed to provide reasonable protection against harmful interference in a residential installation. This equipment generates, uses and can radiate radio frequency energy and, if not installed and used in accordance with the instructions, may cause harmful interference to radio communications. However, there is no guarantee that interference will not occur in a particular installation.

If this equipment does cause harmful interference to radio or television reception, which can be determined by turning the equipment off and on, the user is encouraged to try to correct the interference by one or more of the following measures:

- Reorient or relocate the receiving antenna.
- Increase the separation between the equipment and receiver.
- Connect the equipment into an outlet on a circuit different from that to which the receiver is connected.
- Consult the dealer or an experienced radio/TV technician for help.

The device has been evaluated to meet general RF exposure requirement. The device can be used in portable exposure condition without restriction