



# Shenzhen HTT Technology Co., Ltd.

## TEST REPORT

47 CFR FCC Part 15 Subpart B (Class B)

Radio Frequency Devices – Unintentional Radiators – Limits and methods of measurement

ANSI C63.4: 2014

American National Standard for Methods of Measurement of Radio-Noise Emissions from Low-Voltage Electrical and Electronic Equipment in the Range of 9 kHz to 40 GHz

Report Reference No.....: HTT202405283

FCCID..... 2BGHZ-GM08

Compiled by  
( position+printed name+signature)...: File administrators

*Heber He*

Supervised by  
( position+printed name+signature)...: Project Engineer

*Bruce Zhu*

Approved by  
( position+printed name+signature)...: RF Manager

*Kevin Yang*



Date of issue.....: May. 16, 2024

Testing Laboratory Name .....: Shenzhen HTT Technology Co.,Ltd.

Address.....: 1F, Building B, Huafeng International Robotics Industrial Park,  
Hangcheng Road,Nanchang Community, Xixiang Street, Bao'an District, Shenzhen, Guangdong, China

Applicant's name .....: Shenzhen Dugouyite Technology Co., Ltd.

Address .....: 217, No. 15, Zone 2, Fuhai Industrial Zone, Fuyong Street,  
Baoan District, Shenzhen, Guangdong Province, China

Test specification .....

Standard .....: 47 CFR FCC Part 15 Subpart B (Class B)  
ANSI C63.4: 2014

Shenzhen HTT Technology Co.,Ltd. All rights reserved.

This publication may be reproduced in whole or in part for non-commercial purposes as long as the Shenzhen HTT Technology Co.,Ltd. is acknowledged as copyright owner and source of the material. Shenzhen HTT Technology Co.,Ltd. takes no responsibility for and will not assume liability for damages resulting from the reader's interpretation of the reproduced material due to its placement and context.

Equipment description.....: GPS PET WIRELESS FENCE SYSTEM

Trade Mark .....: DOGOITM

Manufacturer .....: Shenzhen Dugouyite Technology Co., Ltd.

Model/Type reference.....: GM08

List Model .....: GM09

Ratings .....: DC 3.7V From Battery and DC 5V From External Circuit

Result.....: PASS

# TEST REPORT

Equipment under Test : GPS PET WIRELESS FENCE SYSTEM

Model /Type : GM08

Listed Models : GM09

**Applicant** : **Shenzhen Dugouyite Technology Co., Ltd.**

Address : 217, No. 15, Zone 2, Fuhai Industrial Zone, Fuyong Street, Baoan District, Shenzhen, Guangdong Province, China

**Manufacturer** : **Shenzhen Dugouyite Technology Co., Ltd.**

Address : 217, No. 15, Zone 2, Fuhai Industrial Zone, Fuyong Street, Baoan District, Shenzhen, Guangdong Province, China

<b>Test Result:</b>	<b>PASS</b>
---------------------	-------------

The test report merely corresponds to the test sample.  
It is not permitted to copy extracts of these test result without the written permission of the test laboratory.

## Contents

<b>1.</b>	<b><u>TEST STANDARDS .....</u></b>	<b><u>4</u></b>
<b>2.</b>	<b><u>SUMMARY .....</u></b>	<b><u>5</u></b>
2.1.	General Remarks	5
2.2.	Product Description	5
2.3.	EUT operation mode	5
2.4.	EUT configuration	5
2.5.	Modifications	5
<b>3.</b>	<b><u>TEST ENVIRONMENT .....</u></b>	<b><u>6</u></b>
3.1.	Address of the test laboratory	6
3.2.	Test Facility	6
3.3.	Environmental conditions	6
3.4.	Test Description	6
3.5.	Statement of the measurement uncertainty	6
3.6.	Equipments Used during the Test	7
<b>4.</b>	<b><u>TEST CONDITIONS AND RESULTS .....</u></b>	<b><u>8</u></b>
4.1.	<b>EMISSION</b>	<b>8</b>
4.1.1.	LIMITS OF DISTURBANCE (CLASS B) .....	8
4.1.2.	TEST CONFIGURATION .....	8
4.1.3.	TEST PROCEDURE .....	8
4.1.4.	TEST RESULTS .....	9
4.2.	<b>Conducted Emission</b>	<b>13</b>
4.2.1.	LIMITS OF DISTURBANCE (CLASS B) .....	13
4.2.2.	TEST CONFIGURATION .....	13
4.2.3.	TEST PROCEDURE .....	13
4.2.4.	TEST RESULTS .....	13
<b>5.</b>	<b><u>TEST SET-UP PHOTOS OF THE EUT .....</u></b>	<b><u>16</u></b>
<b>6.</b>	<b><u>EXTERNAL AND INTERNAL PHOTOS OF THE EUT .....</u></b>	<b><u>17</u></b>

## **1. TEST STANDARDS**

The tests were performed according to following standards:

[47 CFR FCC Part 15 Subpart B \(Class B\)](#) Radio Frequency Devices – Unintentional Radiators – Limits and methods of measurement

[ANSI C63.4: 2014](#) American National Standard for Methods of Measurement of Radio-Noise Emissions from Low-Voltage Electrical and Electronic Equipment in the Range of 9 kHz to 40 GHz.

## 2. SUMMARY

### 2.1. General Remarks

Date of receipt of test sample	:	May. 08, 2024
Testing commenced on	:	May. 08, 2024
Testing concluded on	:	May. 16, 2024

### 2.2. Product Description

Product Name:	GPS PET WIRELESS FENCE SYSTEM
Model/Type reference:	GM08
Frequency Range:	1575.42MHz
Power supply:	DC 3.7V From Battery and DC 5V From External Circuit
Adapter Information (Auxiliary test provided by the lab):	Mode: GS-0500200 Input: AC100-240V, 50/60Hz, 0.3A max Output: DC 5V, 2A

### 2.3. EUT operation mode

As the function of the EUT, test mode selected to test as below to conform this standard:

Operation mode	Description
Mode 1	Working mode
Mode 2	Charging mode

We tested all modes and recorded the worst case at the Mode 1.

Test item	Test mode
Conducted emission	Mode 1
Radiated emission	Mode 1

### 2.4. EUT configuration

The following peripheral devices and interface cables were connected during the measurement:

Item	Name	Description	Model	Certificate	Note
1 <sup>Note1</sup>	/	/	/	/	/
2 <sup>Note1</sup>	/	/	/	/	/

Note1: This Auxiliary used during the test is provided by the test laboratory.

### 2.5. Modifications

No modifications were implemented to meet testing criteria

### 3. TEST ENVIRONMENT

#### 3.1. Address of the test laboratory

**Shenzhen HTT Technology Co.,Ltd.**

1F, Building B, Huafeng International Robotics Industrial Park, Hangcheng Road, Nanchang Community, Xixiang Street, Bao'an District, Shenzhen, Guangdong, China

#### 3.2. Test Facility

The test facility is recognized, certified, or accredited by the following organizations:

##### **FCC-Registration No.: 779513 Designation Number: CN1319**

Shenzhen HTT Technology Co.,Ltd. has been listed on the US Federal Communications Commission list of test facilities recognized to perform electromagnetic emissions measurements.

##### **A2LA-Lab Cert. No.: 6435.01**

Shenzhen HTT Technology Co.,Ltd. has been listed by American Association for Laboratory Accreditation to perform electromagnetic emission measurement.

The 3m-Semi anechoic test site fulfils CISPR 16-1-4 according to ANSI C63.10 and CISPR 16-1-4:2010.

#### 3.3. Environmental conditions

During the measurement the environmental conditions were within the listed ranges:

Normal Temperature:	20-25 ° C
Lative Humidity	40-55 %
Air Pressure	950-1050mbar

#### 3.4. Test Description

Emission Measurement		
Radiated Emission	47 CFR FCC Part 15 Subpart B Class B ANSI C63.4 2014	PASS
Conducted Emission	47 CFR FCC Part 15 Subpart B Class B ANSI C63.4 2014	PASS

Remark:1. N/A means "not applicable".

2.The measurement uncertainty is not included in the test result.

#### 3.5. Statement of the measurement uncertainty

The data and results referenced in this document are true and accurate. The reader is cautioned that there may be errors within the calibration limits of the equipment and facilities. The measurement uncertainty was calculated for all measurements listed in this test report acc. to TR-100028-01 "Electromagnetic compatibility and Radio spectrum Matters (ERM);Uncertainties in the measurement of mobile radio equipment characteristics; Part 1" and TR-100028-02 "Electromagnetic compatibility and Radio spectrum Matters (ERM);Uncertainties in the measurement of mobile radio equipment characteristics; Part 2 " and is documented in the Shenzhen CTA Testing Technology Co., Ltd. quality system acc. to DIN EN ISO/IEC 17025. Furthermore, component and process variability of devices similar to that tested may result in additional deviation. The manufacturer has the sole responsibility of continued compliance of the device.

Hereafter the best measurement capability for Shenzhen HTT Technology Co.,Ltd.

Test	Range	Measurement Uncertainty	Notes
Radiated Emission	30~1000MHz	3.45 dB	(1)
Radiated Emission	1~18GHz	3.54 dB	(1)
Conducted Disturbance	0.15~30MHz	2.66 dB	(1)

(1) This uncertainty represents an expanded uncertainty expressed at approximately the 95% confidence level using a coverage factor of k=2.

### 3.6. Equipments Used during the Test

Item	Test Equipment	Manufacturer	Model No.	Inventory No.	Cal.Date (mm-dd-yy)	Cal.Due date (mm-dd-yy)
1	3m Semi- Anechoic Chamber	Shenzhen C.R.T technology co., LTD	9*6*6	HTT-E028	Aug. 10 2021	Aug. 09 2024
2	Control Room	Shenzhen C.R.T technology co., LTD	4.8*3.5*3.0	HTT-E030	Aug. 10 2021	Aug. 09 2024
3	EMI Test Receiver	Rohde&Schwar	ESC17	HTT-E022	Apr. 26 2024	Apr. 25 2025
4	Spectrum Analyzer	Rohde&Schwar	FSP	HTT-E037	Apr. 26 2024	Apr. 25 2025
5	Coaxial Cable	ZDecl	ZT26-NJ-NJ-0.6M	HTT-E018	Apr. 26 2024	Apr. 25 2025
6	Coaxial Cable	ZDecl	ZT26-NJ-SMAJ-2M	HTT-E019	Apr. 26 2024	Apr. 25 2025
7	Coaxial Cable	ZDecl	ZT26-NJ-SMAJ-0.6M	HTT-E020	Apr. 26 2024	Apr. 25 2025
8	Coaxial Cable	ZDecl	ZT26-NJ-SMAJ-8.5M	HTT-E021	Apr. 26 2024	Apr. 25 2025
9	Composite logarithmic antenna	Schwarzbeck	VULB 9168	HTT-E017	May. 21 2023	May. 20 2024
10	Horn Antenna	Schwarzbeck	BBHA9120D	HTT-E016	May. 20 2023	May. 19 2024
11	Loop Antenna	Zhinan	ZN30900C	HTT-E039	Apr. 26 2024	Apr. 25 2025
12	Horn Antenna	Beijing Hangwei Dayang	OBH100400	HTT-E040	Apr. 26 2024	Apr. 25 2025
13	low frequency Amplifier	Sonoma Instrument	310	HTT-E015	Apr. 26 2024	Apr. 25 2025
14	high-frequency Amplifier	HP	8449B	HTT-E014	Apr. 26 2024	Apr. 25 2025
15	Variable frequency power supply	Shenzhen Anbiao Instrument Co., Ltd	ANB-10VA	HTT-082	Apr. 26 2024	Apr. 25 2025
16	EMI Test Receiver	Rohde & Schwarz	ESCS30	HTT-E004	Apr. 26 2024	Apr. 25 2025
17	Artificial Mains	Rohde & Schwarz	ESH3-Z5	HTT-E006	May. 23 2023	May. 22 2024
18	Artificial Mains	Rohde & Schwarz	ENV-216	HTT-E038	May. 23 2023	May. 22 2024
19	Cable Line	Robinson	Z302S-NJ-BNCJ-1.5M	HTT-E001	Apr. 26 2024	Apr. 25 2025
20	Attenuator	Robinson	6810.17A	HTT-E007	Apr. 26 2024	Apr. 25 2025
21	Variable frequency power supply	Shenzhen Yanghong Electric Co., Ltd	YF-650 (5KVA)	HTT-E032	Apr. 26 2024	Apr. 25 2025
22	Control Room	Shenzhen C.R.T technology co., LTD	8*4*3.5	HTT-E029	Aug. 10 2021	Aug. 09 2024
23	DC power supply	Agilent	E3632A	HTT-E023	Apr. 26 2024	Apr. 25 2025
24	EMI Test Receiver	Agilent	N9020A	HTT-E024	Apr. 26 2024	Apr. 25 2025
25	Analog signal generator	Agilent	N5181A	HTT-E025	Apr. 26 2024	Apr. 25 2025
26	Vector signal generator	Agilent	N5182A	HTT-E026	Apr. 26 2024	Apr. 25 2025
27	Power sensor	Keysight	U2021XA	HTT-E027	Apr. 26 2024	Apr. 25 2025
28	Temperature and humidity meter	Shenzhen Anbiao Instrument Co., Ltd	TH10R	HTT-074	Apr. 28 2024	Apr. 27 2025
29	Radiated Emission Test Software	Farad	EZ-EMC	N/A	N/A	N/A
30	Conducted Emission Test Software	Farad	EZ-EMC	N/A	N/A	N/A
31	RF Test Software	panshanrf	TST	N/A	N/A	N/A

## 4. TEST CONDITIONS AND RESULTS

### 4.1. EMISSION

#### 4.1.1. LIMITS OF DISTURBANCE (CLASS B)

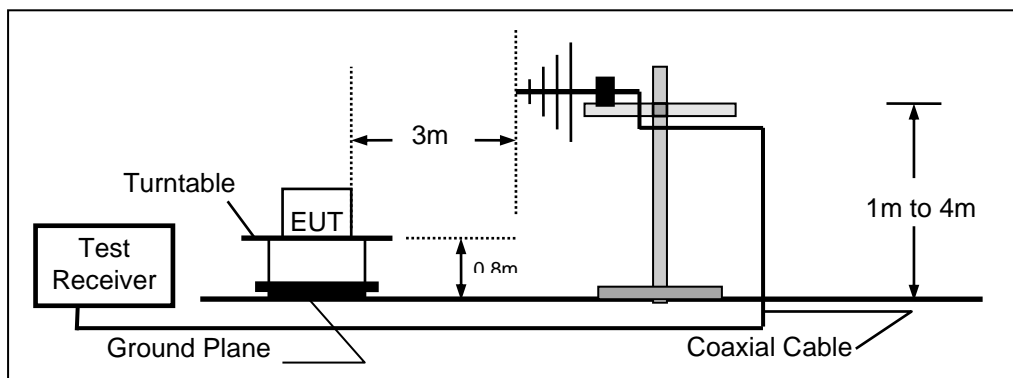
Frequency (MHz)	Distance (Meters)	Field Strengths Limits (dB $\mu$ V/m)
30 ~ 88	3	40
88~216	3	43.5
216 ~ 960	3	46
Above 960(AV)	3	54
Above 960(PK)	3	74

Note: (1) The tighter limit shall apply at the edge between two frequency bands.

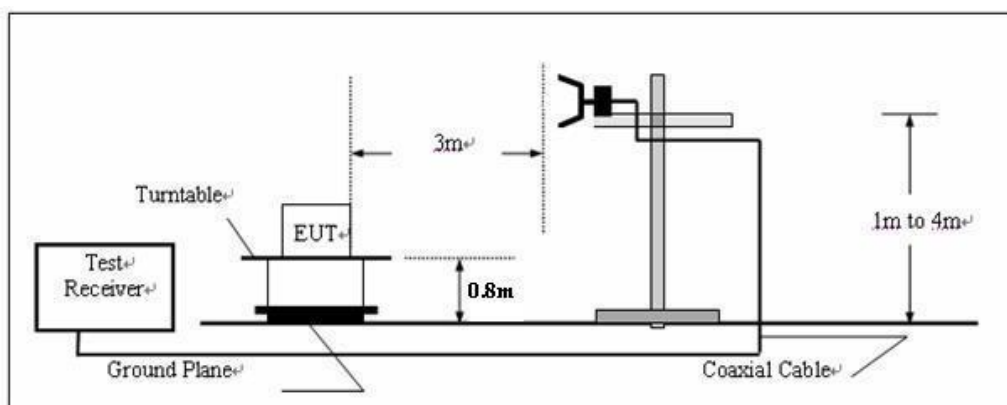
(2) Distance refers to the distance in meters between the test instrument antenna and the closest point of any part of the E.U.T.

#### 4.1.2. TEST CONFIGURATION

a) Radiated emission test set-up, frequency below 1000MHz:



b) Radiated emission test set-up, frequency above 1000MHz



#### 4.1.3. TEST PROCEDURE

EUT is tested in Semi-Anechoic Chamber. EUT is placed on a nonmetal table which is 0.8 meter above a grounded turntable. The turntable can rotate 360 degrees to determine the azimuth of the maximum emission level. EUT is set 3 meters away from the center of receiving antenna. The antenna can move up and down from 1 to 4 meter to find out the maximum emission level. Both horizontal and vertical polarizations of the antenna are set on the test.

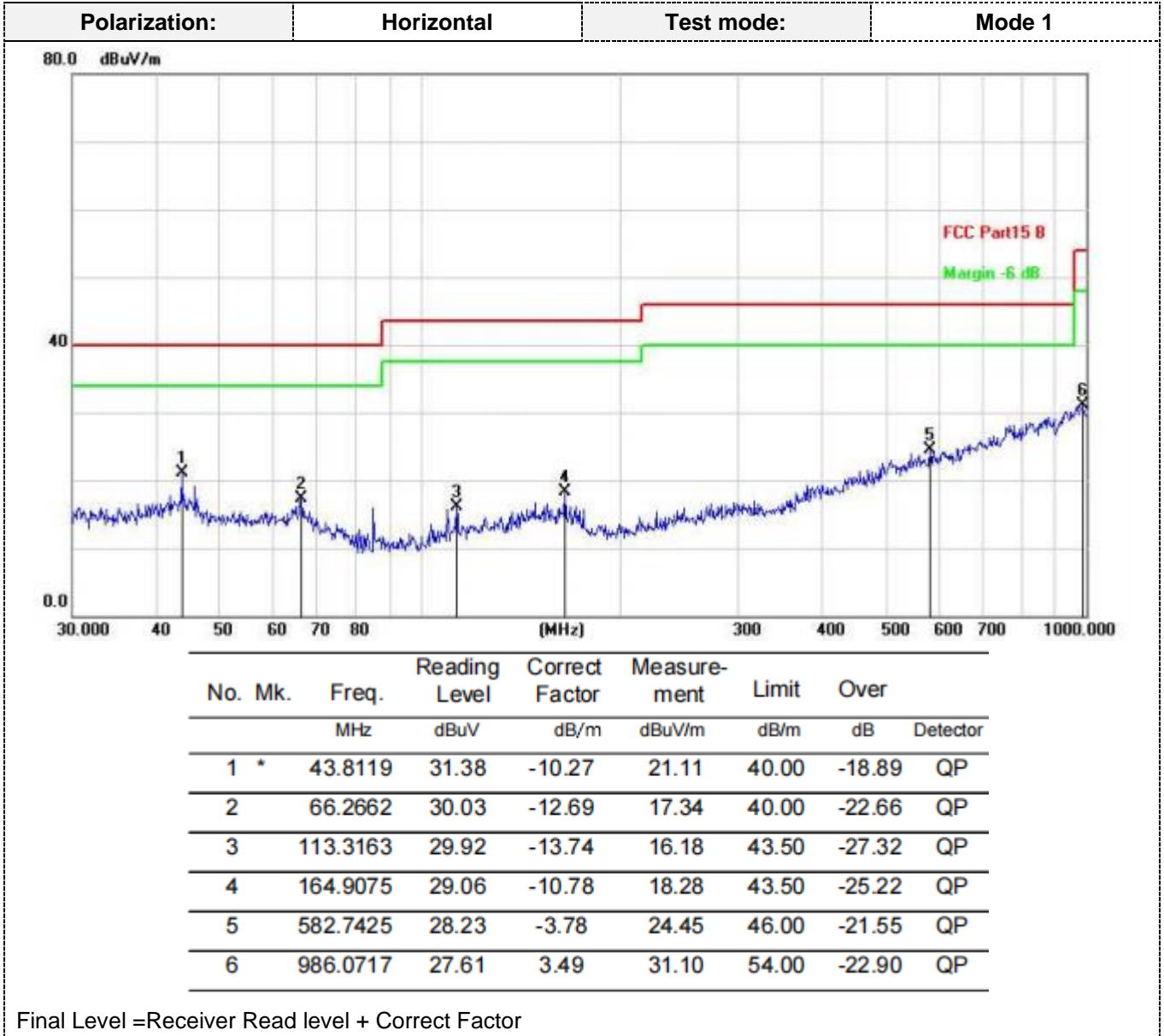


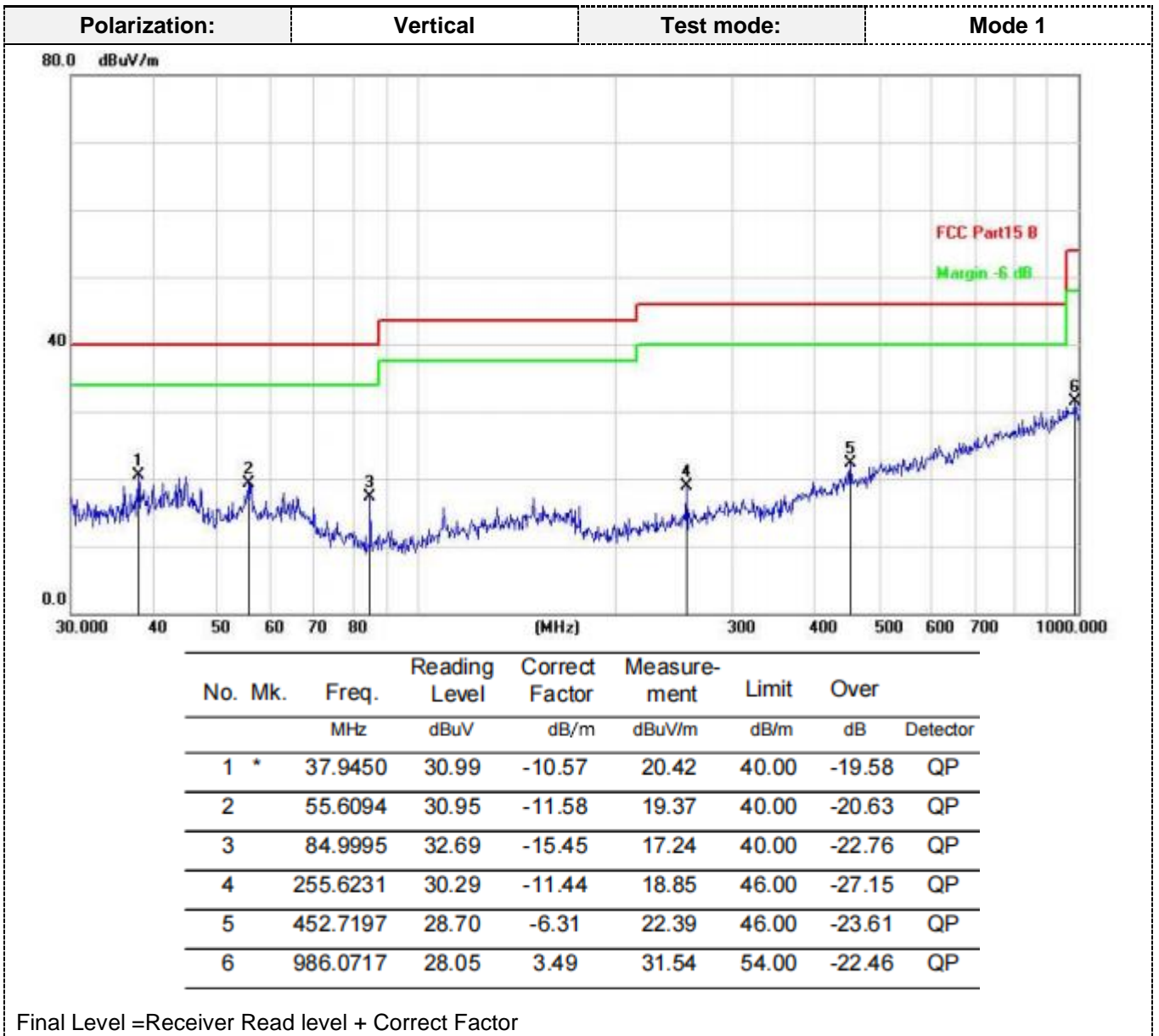
Test environment:	Temp.:	25 °C	Humid.:	52%	Press.:	1012mbar
-------------------	--------	-------	---------	-----	---------	----------

4.1.4. TEST RESULTS

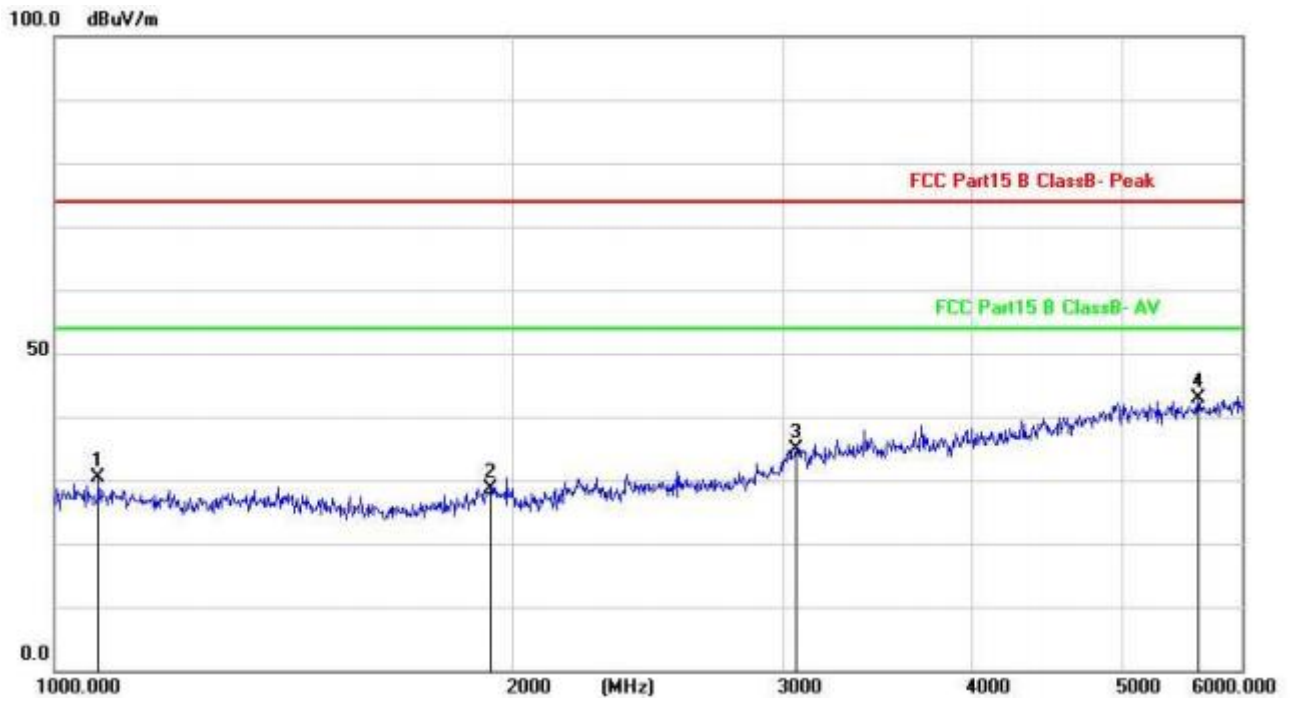
Passed

Please refer to the below test data:





Test mode: Mode 1 Polarization Horizontal



No. Mk.	Freq. MHz	Reading Level dBuV	Correct Factor dB/m	Measurement dBuV/m	Limit dB/m	Over dB	Detector
1	1068.542	29.49	0.94	30.43	74.00	-43.57	QP
2	1930.108	24.82	3.81	28.63	74.00	-45.37	QP
3	3058.908	25.88	9.01	34.89	74.00	-39.11	QP
4 *	5615.128	26.70	16.14	42.84	74.00	-31.16	QP

Final Level =Receiver Read level + Correct Factor

Test mode:	Mode 1	Polarization	Vertical
------------	--------	--------------	----------



No. Mk.	Freq. MHz	Reading Level dBuV	Correct Factor dB/m	Measurement dBuV/m	Limit dB/m	Over dB	Detector
1	1029.083	30.27	0.91	31.18	74.00	-42.82	QP
2	1965.002	27.66	4.09	31.75	74.00	-42.25	QP
3	3130.995	28.40	9.19	37.59	74.00	-36.41	QP
4 *	5407.773	27.04	15.75	42.79	74.00	-31.21	QP

Final Level =Receiver Read level + Correct Factor

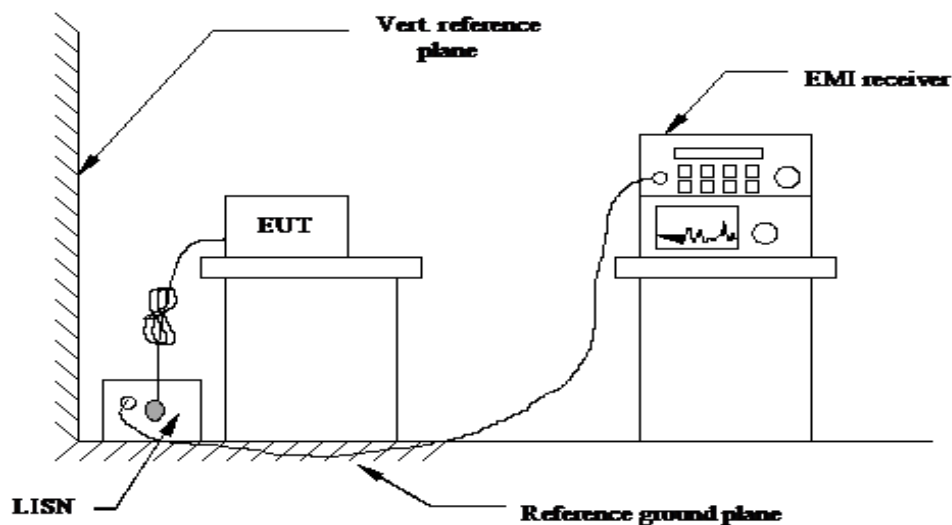
## 4.2. Conducted Emission

### 4.2.1. LIMITS OF DISTURBANCE (CLASS B)

Frequency Range (MHz)	Limits (dBuV)	
	Quasi-Peak	Average
0.150~0.500	66~56	56~46
0.500~5.000	56	46
5.000~30.000	60	50

Note: (1) The tighter limit shall apply at the edge between two frequency bands.

### 4.2.2. TEST CONFIGURATION



### 4.2.3. TEST PROCEDURE

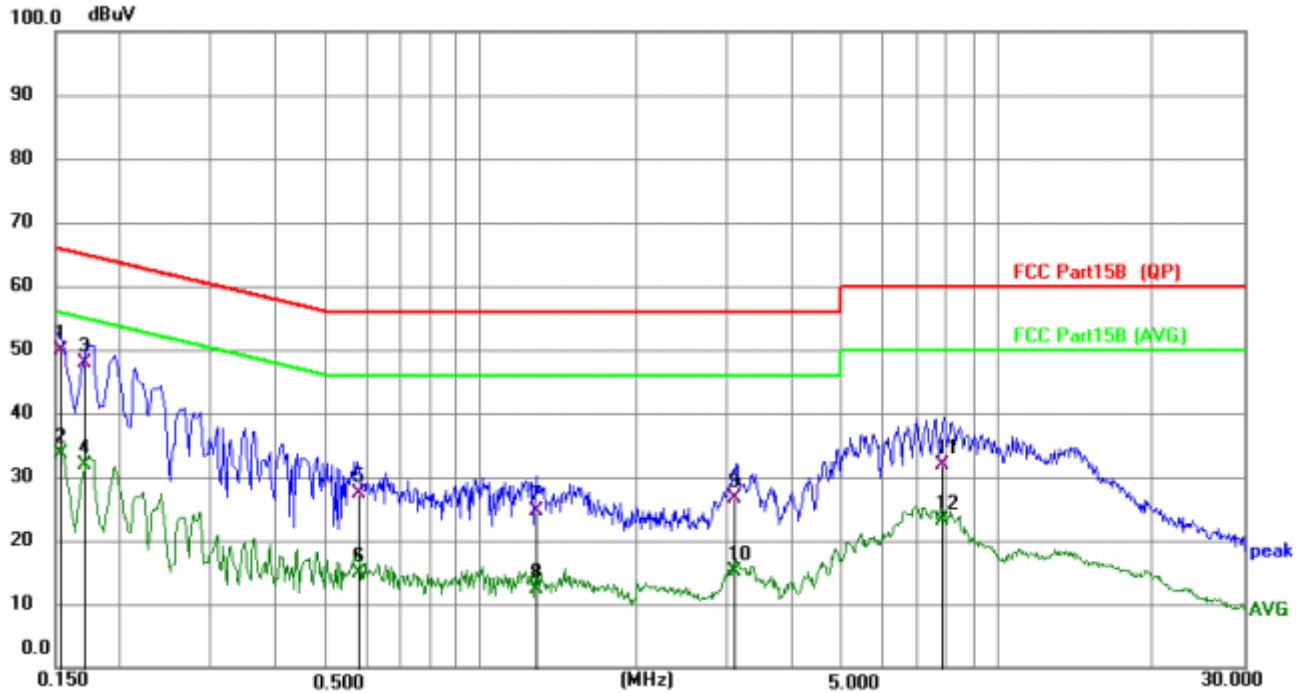
EUT is placed on a nonmetal table which is 0.8 meter (or 0.1 meter for floor-stood equipments) above the grounded reference plane. Connect the power line of the EUT to the LISN. Voltage of the power supply is varied over a range of 0.9 to 1.1 times of the rated voltage in order to check whether the level of disturbance varies considerably with the supply voltage at the selected frequency about 160KHz. Perform an initial measurement on each line with peak detector to identify the frequencies where the maximum disturbances may occur. Then measure and record the maximum disturbances with quasi-peak and average detector.

Test environment:	Temp.:	25 °C	Humid.:	52%	Press.:	1012mbar
-------------------	--------	-------	---------	-----	---------	----------

### 4.2.4. TEST RESULTS

Passed

Line:	L	Test mode:	Mode 1
-------	---	------------	--------



No.	Mk.	Freq. MHz	Reading Level dB	Correct Factor dB	Measure- ment dBuV	Limit dBuV	Over dB	Detector
1	*	0.1535	39.75	10.16	49.91	65.81	-15.90	QP
2		0.1535	23.38	10.16	33.54	55.81	-22.27	AVG
3		0.1707	37.74	10.18	47.92	64.93	-17.01	QP
4		0.1707	21.81	10.18	31.99	54.93	-22.94	AVG
5		0.5794	17.00	10.31	27.31	56.00	-28.69	QP
6		0.5794	4.49	10.31	14.80	46.00	-31.20	AVG
7		1.2881	14.14	10.41	24.55	56.00	-31.45	QP
8		1.2881	1.97	10.41	12.38	46.00	-33.62	AVG
9		3.1132	16.01	10.51	26.52	56.00	-29.48	QP
10		3.1132	4.57	10.51	15.08	46.00	-30.92	AVG
11		7.8542	21.32	10.64	31.96	60.00	-28.04	QP
12		7.8542	12.47	10.64	23.11	50.00	-26.89	AVG

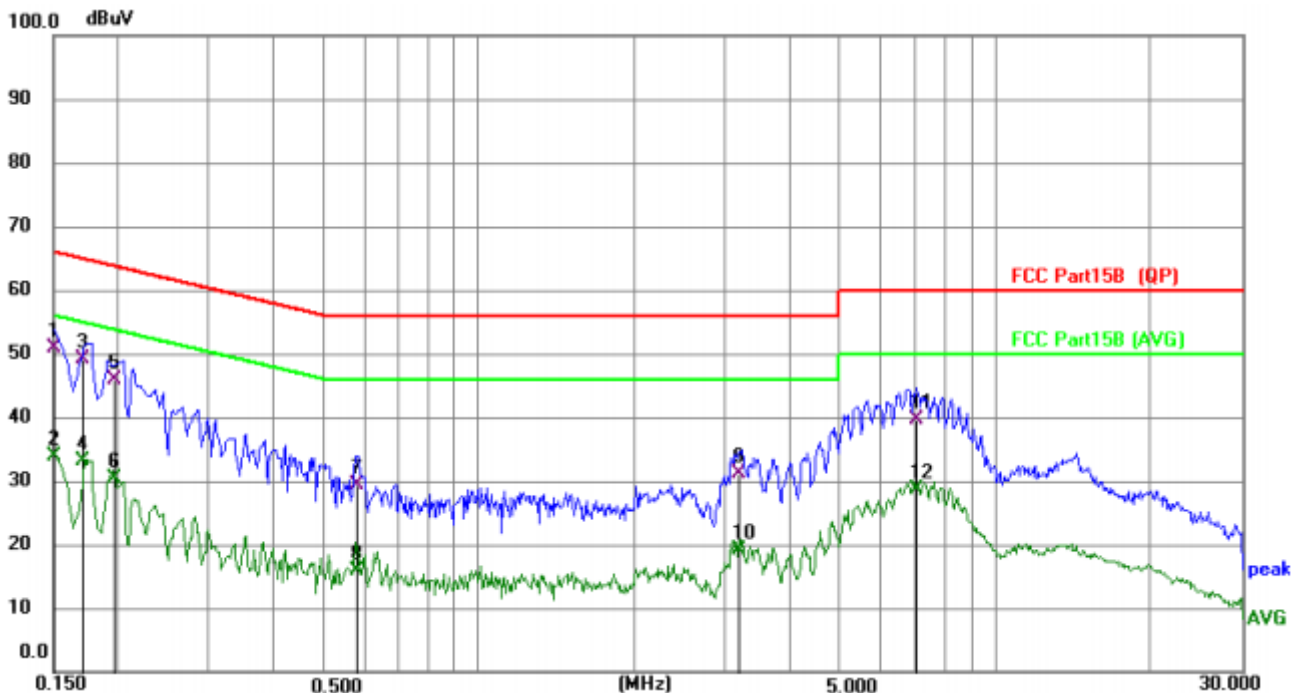
Notes:

An initial pre-scan was performed on the line and neutral lines with peak detector.

Quasi-Peak and Average measurement were performed at the frequencies with maximized peak emission.

Final Level = Receiver Read level + LISN Factor + Cable Los

Line:	N	Test mode:	Mode 1
-------	---	------------	--------



No.	Mk.	Freq.	Reading Level	Correct Factor	Measurement	Limit	Over	Detector
		MHz		dB	dBuV	dBuV	dB	
1	*	0.1500	40.83	10.16	50.99	66.00	-15.01	QP
2		0.1500	23.66	10.16	33.82	56.00	-22.18	AVG
3		0.1708	38.93	10.18	49.11	64.92	-15.81	QP
4		0.1708	22.96	10.18	33.14	54.92	-21.78	AVG
5		0.1966	35.66	10.21	45.87	63.75	-17.88	QP
6		0.1966	20.26	10.21	30.47	53.75	-23.28	AVG
7		0.5798	19.14	10.32	29.46	56.00	-26.54	QP
8		0.5798	5.67	10.32	15.99	46.00	-30.01	AVG
9		3.2138	20.77	10.46	31.23	56.00	-24.77	QP
10		3.2138	8.69	10.46	19.15	46.00	-26.85	AVG
11		7.0611	28.96	10.69	39.65	60.00	-20.35	QP
12		7.0611	17.83	10.69	28.52	50.00	-21.48	AVG

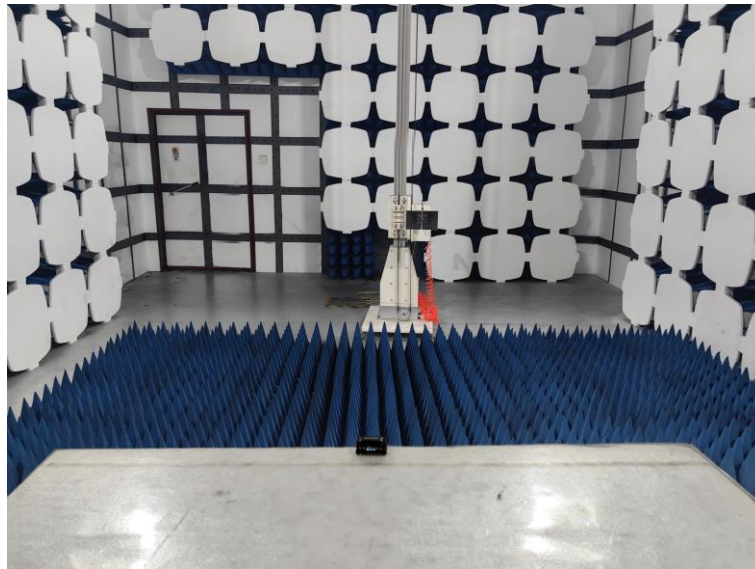
Notes:

An initial pre-scan was performed on the line and neutral lines with peak detector.  
 Quasi-Peak and Average measurement were performed at the frequencies with maximized peak emission.  
 Final Level =Receiver Read level + LISN Factor + Cable Los



## 5. Test Set-up Photos of the EUT

Radiated Emission

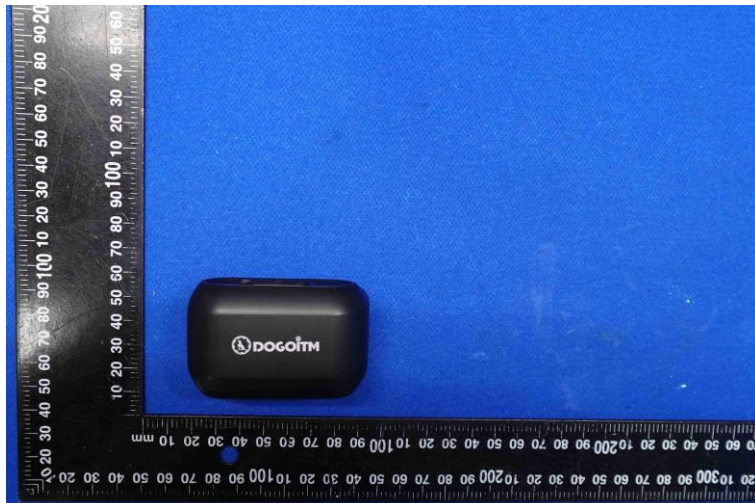


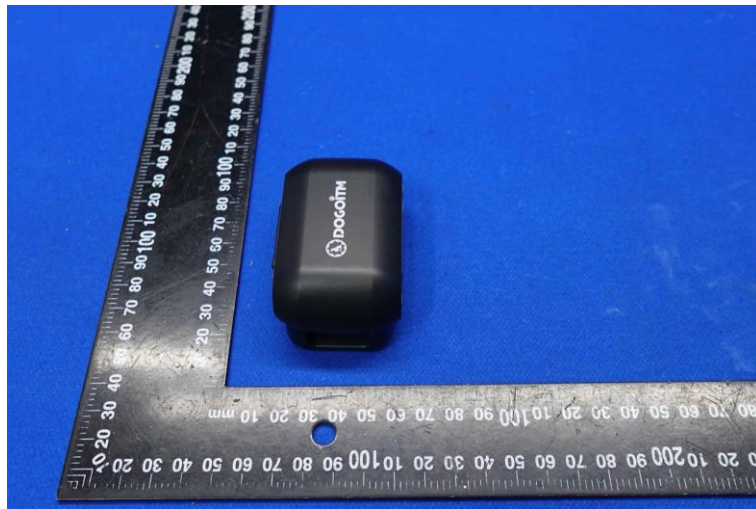
Conducted Disturbance



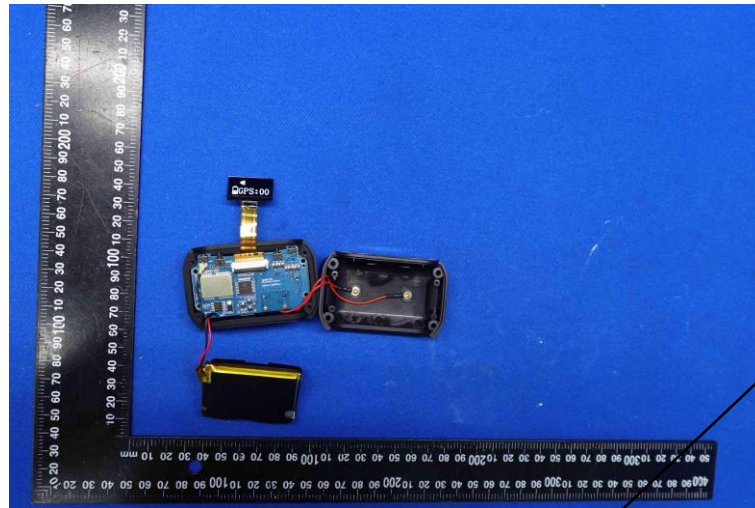


## 6. External and Internal Photos of the EUT

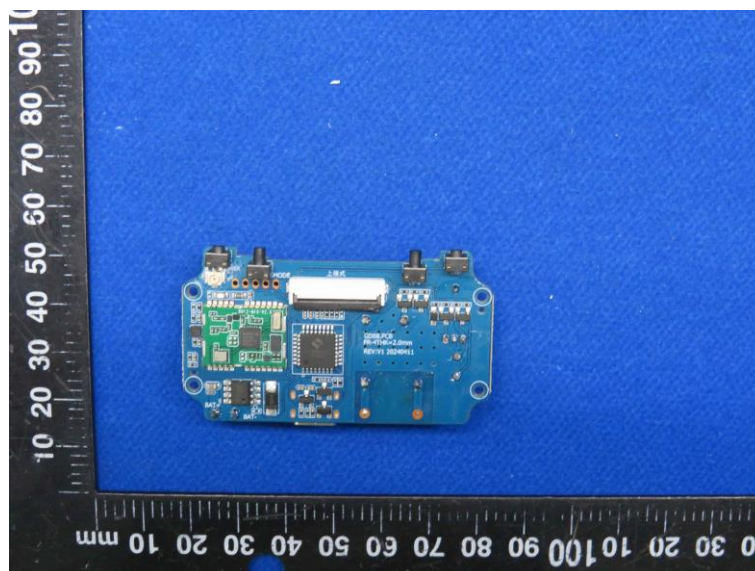
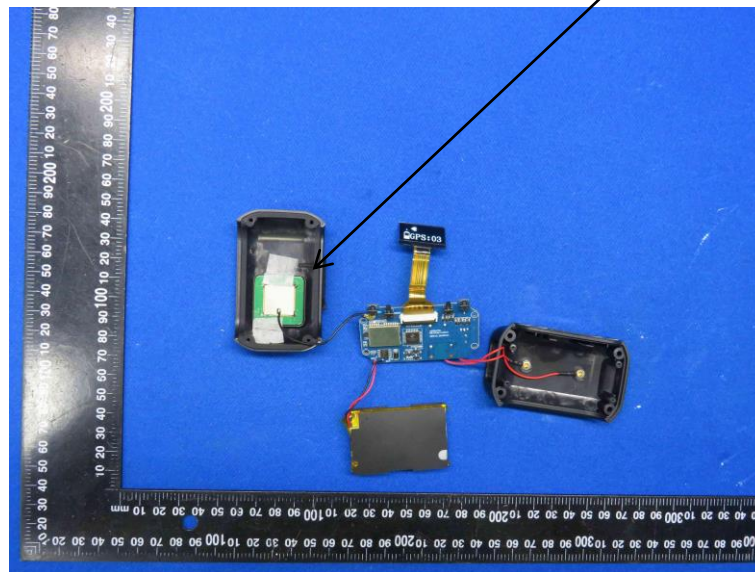


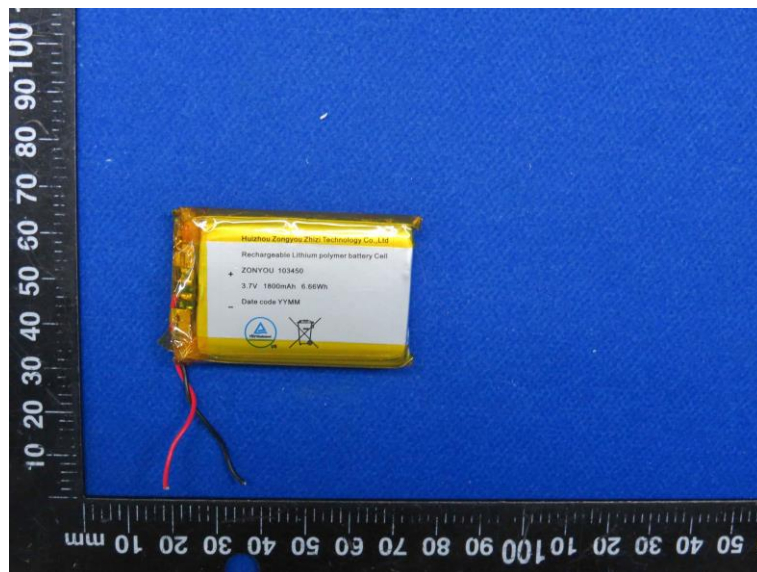
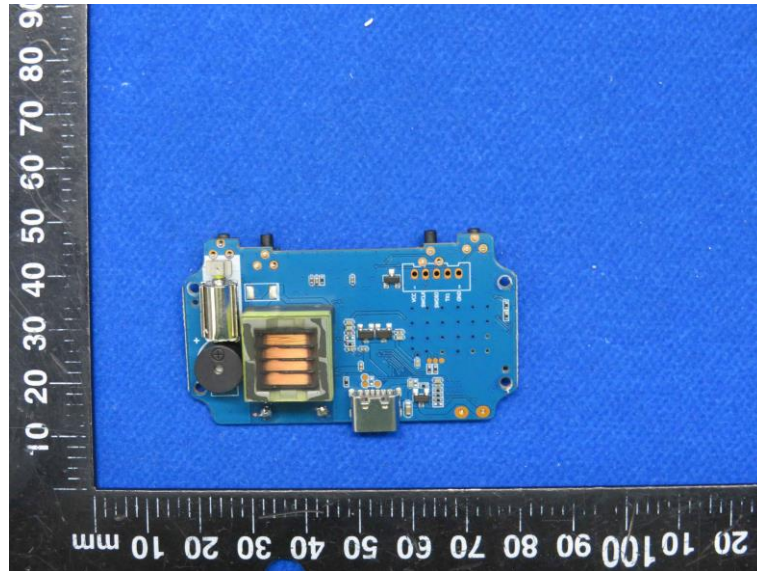






RX GPS





\*\*\*\*\*End of Report\*\*\*\*\*