

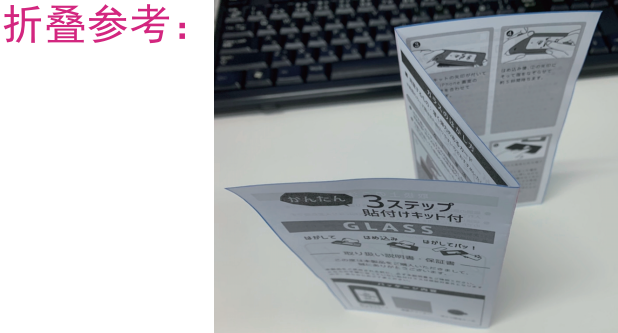
生产要求:

* 说明书/SPW-PB-03-R小章鱼饮水机

* 材质: 100g书纸+单黑印刷

刀线

折线 (不印刷)



120mm

120mm

120mm

120mm

120mm

Product Manual

Pumpless water fountain

1. Product Features

The SPW-PB-03-R is a smart wireless pet water fountain with sensor activation. Its main features are:

- 3L Capacity
- 304 stainless steel tray
- 3-stage filtration
- UV Sterilization
- Up to 60-day battery life
- Two Modes
- Stable Water Output
- Ultra quiet

- Built-in stable pressure control unit ensures a steady water flow. It prevents splashing when fully charged and avoids thin streams at low power.
- Two water dispensing modes cater to pets of different ages and temperaments, making it convenient for pet owners when traveling or away from home.
- Multi-layer food-grade water purification system, including coarse filtration cotton, high-density filter sponge, two sets of coconut shell activated carbon, and two sets of ion-exchange resin. This setup ensures thorough filtration, effectively removing impurities, softening water, and eliminating calcium and magnesium deposits to improve pet hydration.
- Built-in UV sterilization lamp provides periodic disinfection, ensuring clean and safe water quality.

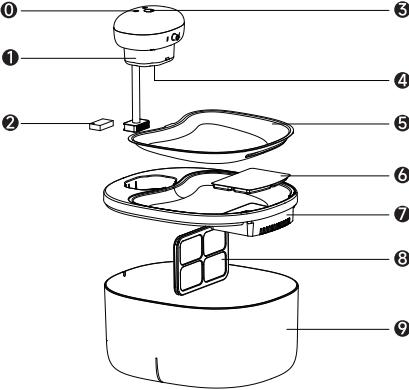
2. Product Specifications

Product Name	Model Number	Product Dimensions	Casing Material	Standard Code
Little Octopus Water fountain	SPW-PB-03-R	230×195×165mm	304 stainless steel, Eco-friendly ABS	Q/KCT SPWPB03-2024
Operating Modes	Input Voltage	Input Current	Net Weight	Water Tank Capacity
Timer Mode, Sensor Mode	DC 5V	1A	700g	3L

3. Product Components

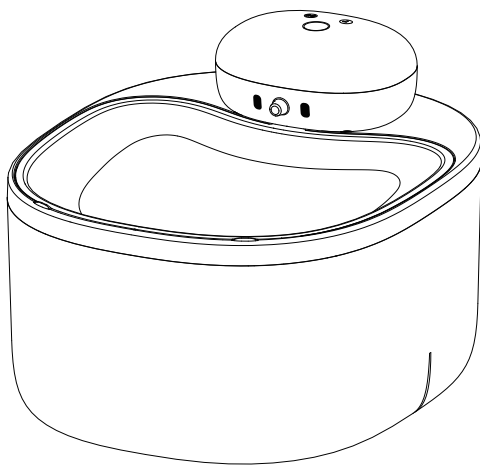
① Indicator Light
Green: Timer Mode
Red: Charging Status
Yellow: Sensor Mode

- ① Water Pump Main Unit
- ② Water Pipe Sponge
- ③ Touch Button
- ④ UV Sterilization Light
- ⑤ Stainless Steel Water Tray
- ⑥ Water Tray Filter
- ⑦ Plastic Water Tray
- ⑧ Water Tank Filter
- ⑨ Water Tank



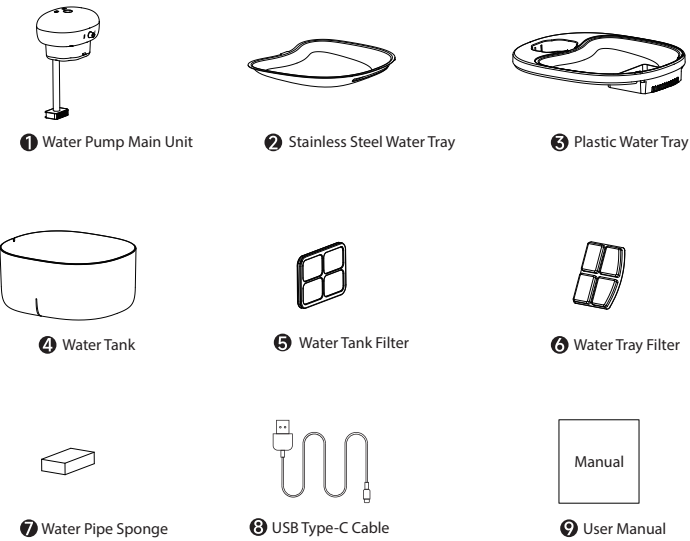
Little Octopus Water fountain

SPW-PB-03-R | Product Manual

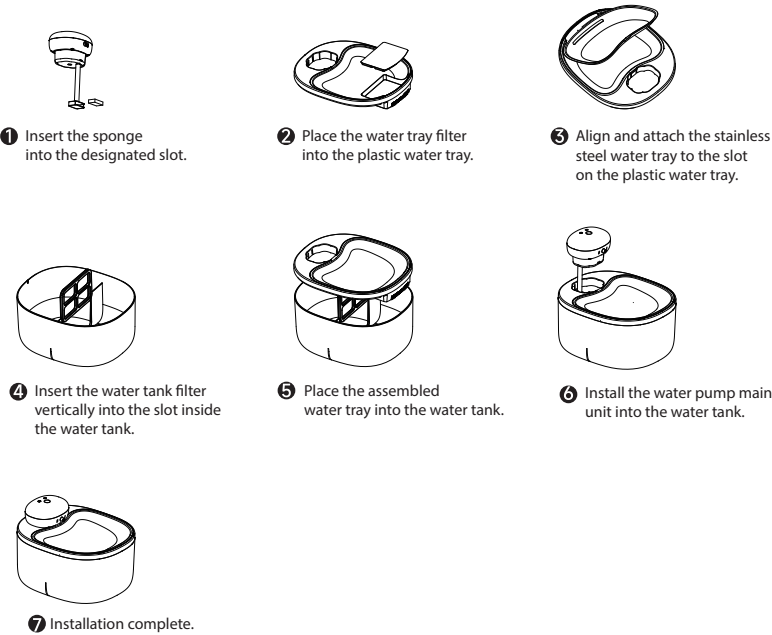


Please read this product manual carefully before use, and keep it properly for future reference.

4. Inside the box



5. Installation



6. Usage Instructions

Power Button	Power On/OFF: Press the button for 2 seconds to turn the device on in factory default (sensor mode).
	Mode Switching: Press the button once to switch between timed mode and sensor mode.
Timed Mode (Interval Mode)	Green indicator light blinks for 2 seconds. Water flows for 15 seconds, then the green light blinks every 3 seconds. Water dispenses every 30 minutes.
Sensor Mode (Smart Mode)	Yellow indicator light blinks for 2 seconds. Water flows for 5 seconds, then the yellow light blinks every 3 seconds. Water is dispensed upon sensor detection for 5 seconds. Continuous sensor detection keeps dispensing water until the sensor is deactivated.
Sensor Distance	Detection range: 0~120 cm (May vary based on environmental temperature differences).
Battery Indicator	Low Battery Warning: If battery drops below 10%, the red light stays on until it shuts off due to low battery.
	Critical Battery Warning: Press and hold the power button—red light flashes quickly for 7 seconds before shutting down.a
UV Sterilization Light	Automatically activates 1 minute after power-on for 15 seconds. Thereafter, it activates every 8 hours for 15 seconds in a cycle.a

7. Maintenance and Care

- Good to know:**
- Before first use, read the User Manual and charge the battery while the device is turned off.
 - Avoid prolonged charging or leaving the battery empty for too long, as this may reduce battery lifespan.
 - Do not let the device run without water for extended periods.
 - Do not attempt to dismantle the pump motor unless you are a professional.

- Cleaning:**
- Before performing maintenance, unplug the charging cable and turn off the device.
 - Weekly cleaning of the water outlet and water tray is recommended to remove pet hair and debris, prolonging the lifespan of the water filter.
 - Weekly inspection and monthly cleaning of the water tank are suggested, including backflushing the tray filter and water tank filter.
 - Replace filters regularly:
Water tray filter: Every 3-4 weeks (According to usage)
Water tank filter: Every 6-8 weeks

FCC Caution:
This device complies with part 15 of the FCC Rules. Operation is subject to the following two conditions: (1) this device may not cause harmful interference, and (2) this device must accept any interference received, including interference that may cause undesired operation.
Any changes or modifications not expressly approved by the party responsible for compliance could void the user's authority to operate the equipment.
NOTE: This equipment has been tested and found to comply with the limits for a Class B digital device, pursuant to Part 15 of the FCC Rules. These limits are designed to provide reasonable protection against harmful interference in a residential installation. This equipment generates, uses and can radiate radio frequency energy and, if not installed and used in accordance with the instructions, may cause harmful interference to radio communications. However, there is no guarantee that interference will not occur in a particular installation. If this equipment does cause harmful interference to radio or television reception, which can be determined by turning the equipment off and on, the user is encouraged to try to correct the interference by one or more of the following measures:
-- Reorient or relocate the receiving antenna.
-- Increase the separation between the equipment and receiver.
-- Connect the equipment into an outlet on a circuit different from that to which the receiver is connected.
-- Consult the dealer or an experienced radio/TV technician for help.
To maintain compliance with FCC's RF Exposure guidelines, This equipment should be installed and operated with minimum distance between 20cm the radiator your body. Use only the supplied antenna