



夜櫻

使用手册



樱之雀·APP互动

广州野鹰电子科技有限公司
Guangzhou Yeain Electronic Technology co., Ltd.

关于我们

野鹰电子科技，是一家专注投身于情趣用品研发设计销售的成人情趣用品公司，在业界市场占有率很高并享有盛誉。

作为中国情趣用品生产与代理的翘楚之一，野鹰与拥有雄厚实力的产品设计研发团队长期合作，为广大客户提供安全、舒心的工艺技术，每款产品都能为消费者带来身心愉悦的“性福感”。

旗下品牌产品坚持以“科技、品质、体验”为研发战略，不断吸取客户意见，收集并分析市场信息，融合匠心工艺，汇聚数十名产品工程师的心血研发而成。产品选取符合安全标准的用料，尽力满足消费者对“性福”的美好追求，野鹰致力于让每一位客户都能全身心享受健康与快乐。

产品特点

樱之雀·APP互动，造型简约美观的穿戴G点按摩棒。同以往传统的产品设计繁复，简洁而不简单的外观更赏心悦目，使用起来私密性更强，柔软顺滑的硅胶材质让您纵享激情。APP玩法层出不穷，5种不同模式任您选择，震动加温体验不同的频率，不同的G点刺激。您可以根据自己的敏感度，调节最适合您的高潮模式，樱之雀采用硅胶触感真实细腻，内置强震马达刺激G点，让您尽情领略不同的高潮快感，欲罢不能，快来一起体验吧！



产品信息

品 牌:	YEAIN(夜樱)
品 名:	樱之雀·APP互动
型 号:	YY622
材 质:	ABS 硅胶
颜 色:	红色/黄色/粉色
产品类型:	APP互动
产品重量:	80g
供电方式:	USB充电
产品功能:	5种模式
额定电压:	3.7V
噪音指数:	≤50分贝
电池容量:	500MAH
产品规格:	115mm*32mm*45mm
包装尺寸:	130mm*100mm*60mm
防水性能:	生活防水
执行标准:	Q/YEAIN 1-2018
保 质 期:	三年
生产日期:	
包装清单:	主机，说明书，充电线
适用人群:	成人女性
本产品经检验合格允许出厂	

注意事项

- 使用产品前，将产品进行充电，充电时灯光闪烁，充满时的灯光常亮。
- 完整充电需要2-3小时，根据器具内部残余电量的多少具体充电是时间会有不同。
- 器具完整充电后正常使用时间是1-2小时，具体使用时间取决于您选择的模式，模式开启越多，频率越高，电池消耗就越快。
- 每次使用前请对产品进行消毒清洗处理，用温水和抗菌沐浴露或者香皂清洗，并用毛巾或柔布轻轻擦干。
- 使用本产品前，请仔细阅读本使用说明书，并妥善保管。
- 本产品废弃，应按废旧电器电子产品处理，回收至相应的废旧电器电子产品回收站，本品不适用于普通垃圾的处理方式。

使用步骤

一、下载及安装APP

IOS系统

- 在App Store里面搜索“暮悠”，并下载安装。（英文版无需手机系统语言为英文，在App Store里面搜索“Love Spouse”，下载安装）。
- 用手机扫描包装盒或说明书上的APP二维码，按提示下载安装“暮悠”APP。

- 用手机扫描包装盒或说明书上的APP二维码，按提示下载安装“暮悠”APP。



APP下载



产品绑定

二、注册及登录APP

- 点击“暮悠”APP图标进入APP，首次登录请先注册；
- 点击“新用户注册”，用手机号码或邮箱完成注册；
- 注册完成后，输入账号和密码登录APP。

三、设备绑定

- 首次登录后需绑定设备；
- 点击“+”，出现设备绑定扫描框；
- 扫描产品包装盒或说明书上的ID二维码设备识别码，扫描成功后显示该产品图标；
- 如客户购买了几款产品，请重复以上2-3步骤，完成其他产品的绑定；
- 长按设备图标，可以对设备进行删除和设备名称的修改；
- 设备删除后，如客户想恢复则需重新扫描设备绑定码。

四、设备连接和操控

首先打开设备的开关，然后点击APP里的设备图标，如果此时手机蓝牙未打开则会显示“暮悠想要开启蓝牙”的提示框，点击允许后手机会自动打开蓝牙，设备和手机开始建立连接，连接成功后进入设备操控界面。
1. 经典模式：点击APP上的九宫格任意图标，设备会启动对应的震动频率。同时APP上的图标会闪烁，再次点击这个图标，设备会停止震动进入待机状态，APP图标也停止闪烁。
2. 设备图标也停止闪烁。

- 音乐模式：点击音乐模式或滑动APP的操作界面，可以进入音乐模式。APP会自动搜索手机内的音乐播放器，随便点击一个音乐播放器播放音乐，则设备会随音乐的变化而震动。如果想停止音乐模式则点击或滑动到其他操控界面。（注意：手机的播放音乐的声音不能太小）

- 划一划模式：点击划一划模式或滑动APP的操作界面，可以进入划一划模式。点击画面中的“+”号，进入编辑界面，在编辑界面中，按您的喜好划动频率的震动轨迹，点击“保存”；在弹出的窗口中输入备注信息，点击“确定”按钮完成操作，然后就能重复播放该频率。

- 摇一摇模式：点击摇一摇模式或滑动APP的操作界面，可以进入摇一摇模式。设备会根据您手机的晃动节奏及幅度震动。

- 互动模式：5.1 点击互动模式或滑动APP的操作界面，可以进入互动模式。5.2 点击APP主页上的互动按钮也可以进入互动模式。

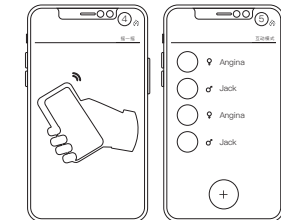
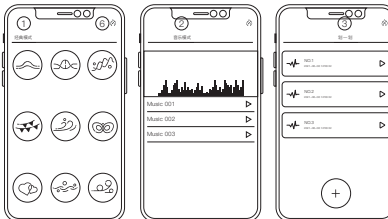
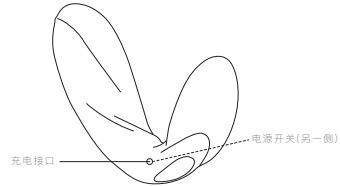
- 5.3 添加好友5.3.1 在互动界面，点击好友按钮会出现好友搜索框；5.3.2 模糊搜索可以按性别和年龄搜索出对应的注册用户；5.3.3 另外还可以通过ID号、昵称、手机号、邮箱进行精确搜索；5.3.4 搜索出结果后，您点击右侧的添加键，则系统会发送好友申请信息给目标用户。

- 5.3.5 对方收到好友申请的消息后，点击信息按钮进入消息中心查看消息（带红点的未读消息）；5.3.6 点击未读消息，并同意或拒绝对方的好友申请，如果同意则加好友成功；

- 5.3.7 好友添加成功后，长按好友图标可以备注，删除，拉黑，举报该好友；5.3.8 点击想进行互动的好友图标，系统会发起互动邀请，点击确定，对方如果接受您的邀请者互动连接成功（注意：如果对方没有连接玩具，此时您的互动界面是没有操控按钮的，必须对方连接上玩具，您的互动界面才有操控按钮）；

- 5.3.9 互动连接成功后，视频默认是未开启状态，你必须先邀请对方视频，并且对方同意开启视频功能才会打开双方的视频（注意：互动时，操控按钮是控制对方的设备，不能控制自己的设备）。

6. 本产品加温功能点击手机右上角火符号(🔥)，点一下变红色加温功能开启，产品对应亮起红灯表示启动加温，再点击一下火符号红色关闭产品加温功能也跟着关闭。



温馨提示

为了您能够享受到野鹰公司的优质服务，以及更迅速的更换产品，请填写好以下信息，并将填写好的产品售后服务卡随同产品一起寄回我公司。我公司收到产品后，立刻给您更换全新产品。感谢您的配合！

客户填写信息

(请寄回此售后服务卡)

产品型号 Item No:

故障描述 Fault description:

购买日期 Purchasedate:

客户姓名 Name:

联系电话 Contact number:

收件地址 Detail ADD:

售后保障

本产品的质保时间为自购买日期起一年，任何产品制造或者材料缺陷引起的质量问题均属于质保范围。如果您有任何此类质量问题并在质保期内，我们将为您免费更换产品。质保范围包括影响产品功能的零部件质量问题，但不包括由于长期使用而造成的外观磨损或由于错误操作、疏忽或意外造成的磨损和损坏。任何尝试打开或分解产品造成的损坏也不在质保范围。

清洁事项

1. 使用完后“宝贝玩具”由于有大量的分泌物及润滑油残留液，如果长时间不清洗的话，容易滋生细菌，所以使用完后请尽快手清洗您的“宝贝玩具”。
2. 清洗时可用温水和抗菌沐浴露或者香皂进行清洗，建议配合情趣用品器具专用清洗剂或75%酒精来消毒。（不建议长期使用酒精，因为酒精会腐蚀玩具的表面，加快器具的老化）。
3. 冲洗完后用干棉布或者优质纸巾进行擦拭，擦拭后在自然风干，不能在太阳下暴晒。

免责声明

使用本产品有潜在风险，请谨慎使用，消费者和销售商对本品滥用，我司不承担任何责任。

售后服务

如果您在使用本产品的过程中，出现疑难问题或是暂不能使用的情况，请速与本公司联系，我们将竭诚为您服务。但您不可擅自拆修本产品，对于私自拆修过的产品，恕本公司不负责。

为确保您享有产品售后服务,购买时请保留购买小票或收据。

▲警告: 此产品仅适合年满18岁成年人使用。

出品商:广州野鹰电子科技有限公司

售后地址:广州白云区西槎路同雅东街98号

售后电话:020-37601193



USER MANUAL



Wearable vibrator · APP interaction

Guangzhou Yeain Electronic Technology co., Ltd.

ABOUT US

YEAIN Technology co., Ltd., is a leader in headtult sex toys . We are a manufacturer andtrader specialized in research, developmentand production of adult sex toys. We have a very good reputation at home and abroad andour product are mainly exported to all aroundthe world.

PRODUCT CHARACTERISTICS

Wearable vibrator · APP interactive, simple and beautiful wearing G-spot massage stick. Unlike the traditional products in the past, the design is complicated, the simple but not simple appearance is more pleasing to the eye, the use is more private, and the soft and smooth silicone material allows you to indulge in passion. APP gameplay is endless, you can choose from 5 different modes, vibration and heating experience different frequencies, different G-spot stimulation. You can adjust the orgasm mode that suits you best according to your sensitivity. The Sakura Sparrow uses silicone to feel real and delicate, and the built-in strong vibration motor stimulates the G-spot, allowing you to enjoy different orgasm pleasures. If you want to stop, come and experience it together!

This device complies with Part 15 of the FCC Rules. Operation is subject to the following two conditions:
(1) This device may not cause harmful interference, and
(2) This device must accept any interference received, including interference that may cause undesired operation.



PRODUCT INFORMATION

Brand:	YEAIN
Name:	Wearable vibrator · APP interactive
Model:	YY622
Material quality:	Silicone+ABS
Color:	Red/Yellow/Pink
Weight:	80g
Type:	APP interactive
Power supply:	USB charging
Waterproof:	Life waterproof
Rated voltage:	3.7V
Noise:	<50DB
Battery capacity:	500MAH
Specification:	115MM*32MM*45MM
Size:	130mm*100mm*60mm
Features:	5 frequency vibration
Implementation standard:	Q/YEAIN 1-2018
Shelf life:	3 years
Production Date:	
Packing list:	Product, manual, charging cable
For people:	Adult women
This product is allowed to leave the factory after passing the inspection	

INSTRUCTIONS

- Before using the product, charge the product, the light flashes when charging, and the light is always on when it is full.
- It takes 2-3 hours to fully charge, and the specific charging time may vary depending on the amount of residual power inside the appliance.
- After the appliance is fully charged, the normal use time is 1-2 hours. The specific use time depends on the mode you choose. The more modes are turned on, the higher the frequency, and the faster the battery consumption. Please disinfect and clean the product before each use, wash it with warm water and antibacterial shower gel or soap, and gently dry it with a towel or soft cloth.
- Before using this product, please read this instruction manual carefully and keep it in a safe place.
- This product should be disposed of as waste electrical and electronic products, and recycled to the corresponding waste electrical and electronic product recycling station. This product is not suitable for ordinary garbage disposal.

Steps for usage

一、Download and install APP

IOS system

1. Search for "mu se life" in the App Store, and download and install it;
2. Use your mobile phone to scan the QR code of the APP on the packing box or manual, and follow the prompts to download and install the "Love Spouse" APP.

Android system

1. Use your mobile phone to scan the QR code of the APP on the packing box or manual, and follow the prompts to download and install the "mu se life" APP.



APP



ID

二、Register and log in to the app

1. Click the APP icon to enter the APP, please register for the first login;
2. Click "New User Registration" and complete the registration with your mobile phone number or email address;
3. After registration, enter the account and password to log in to the APP.

三、Device binding

1. The device needs to be bound after the first login;
2. Click "+", the device binding scan box appears;
3. Scan the ID QR code device identification code on the product packaging box or manual, the product icon will be displayed after the scan is successful;
4. If the customer has purchased several products, please repeat the above 2-3 steps to complete the binding of other products;
5. Long press the device icon, you can delete the device or modify the name;
6. After the device is deleted, if the customer wants to restore it, he needs to scan the device binding code again.

四、Device connection and control

First turn on the switch of the device, and then click the device icon in the APP. If the Bluetooth of the mobile phone is not turned on at this time, a prompt box of "Twilight wants to turn on Bluetooth" will appear. After clicking Allow, the mobile phone will automatically turn on Bluetooth. The device and the mobile phone start to establish a connection, and enter the device control interface after the connection is successful.

1. Classic mode: Click any icon on the APP, and the device will start the corresponding vibration frequency. At the same time, the icon on the APP will flash, click this icon again, the device will stop vibrating and enter the standby state, and the APP icon will stop flashing.

2. Music mode: Click on the music mode or slide the operation interface of the APP to enter the music mode. The APP will automatically search for the music player in the phone, and click on a music player to play music, and the device will vibrate as the music changes. If you want to stop the music mode, click or slide to other control interface. (Note: The sound of the mobile phone playing music should not be too low)

3. Swipe mode: Tap the swipe mode or slide the operation interface of the APP to enter the swipe mode. Click the "+" sign in the screen to enter the editing interface. In the editing interface, swipe the vibration track of the frequency according to your preference and click "Save", enter the remarks in the pop-up window, and click the "OK" button to complete the operation. Then the frequency can be played repeatedly.

4. Shake and shake mode: Tap the shake and shake mode or slide the operation interface of the APP to enter the shake and shake mode. The device will vibrate according to the shaking rhythm and amplitude of your phone.

5. Interactive mode: 5.1 Tap the interactive mode or slide the operation interface of the APP to enter the interactive mode.

- 5.2 You can also enter the interactive mode by clicking the interactive button on the APP homepage.

- 5.3 add friend 5.3.1 In the interactive interface, click the friend button and the friend search box will appear;

- 5.3.2 Fuzzy search can search for corresponding registered users by gender and age;

- 5.3.3 In addition, you can accurately search by ID number, nickname, mobile phone number, and email address;

- 5.3.4 After the search results, you click the add button on the right, and the system will send the friend request information to the target user;

- 5.3.5 After the other party receives the message requested by the friend, click the information button to enter the message center to view the message (the one with the red dot is the unread message);

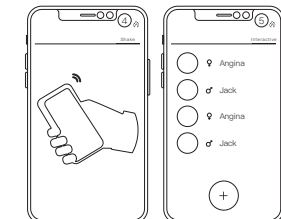
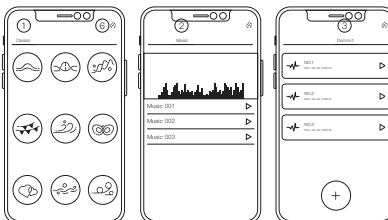
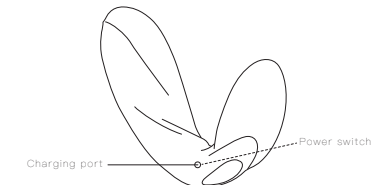
- 5.3.6 Click on the unread message, and agree or reject the other party's friend request. If you agree, you can add friends to each other successfully;

- 5.3.7 After the friend is added successfully, long press the friend icon to comment, delete, block out, and report the friend;

- 5.3.8 Click the icon of the friend you want to interact with, the system will initiate an interactive invitation, click OK. If the other party accepts your invitation, the interactive connection is successful. (Note: If the other party is not connected to the toy, your interactive interface does not have a control button at this time. You must connect the other party to the toy before your interactive interface has a control button);

- 5.3.9 After the interactive connection is successful, the video is not turned on by default. You must first invite the other party's video, and the other party agrees to enable the video function to open the video of both parties).

6. Click the fire symbol(🔥) in the upper right corner of the phone to turn on the heating function of this product, and the product will turn red to turn on the heating function, and then click the fire symbol to turn red to turn off the heating function of the product.



Use suggestions: When the remote control is needed, the switch at the bottom of the penis must be turned on, and the switch indicator light is on before the product can be remotely controlled.

REMINDER

In order to enable you to enjoy the high quality service of Eagle Company and change products more quickly, please fill in the following information carefully and send the completed product after-sales service card back to our company with the products. Our company will replace the whole new product for you as soon as it receives the product. Thank you for your cooperation!

AFTER SALES GUARANTEE

The quality assurance time of this product is one year from the date of purchase. The quality problems caused by manufacturing or material defects of any product fall within the scope of quality assurance. If you have any quality problems of this kind and within the warranty period, we will replace the products for you free of charge.

Quality assurance covers quality problems of parts and components that affect product functions, but excludes wear and tear caused by long-term use or by misoperation, negligence or accident. Damage caused by any attempt to open or decompose the product is not covered by quality assurance.

CLEAN THE MATTERS

1. after the use of love things because there are a large number of secretion and lubricating oil residue liquid, if long time not to clean, easy to breed bacteria, so please as soon as possible after use to clean your
2. Cleaning can be done with warm water and antibacterial shower lotion or soap. It is recommended to disinfect with special cleaner or 75% alcohol for fun utensils. (long-term use of alcohol is not recommended, as it can corrode the surface of toys and accelerate the aging of toys.)
3. After washing, wipe with dry cotton cloth or high-quality paper towel, and then air dry naturally after wiping, and do not expose to the sun.

DISCLAIMER

There are potential risks in using this product. Please use it carefully. Consumers and sellers share this product. Our company does not bear any responsibility.

WARRANTY

If you have any problems in using this product or can't use it for a while, please contact us as soon as possible. We will serve you wholeheartedly. But you are not allowed to dismantle and repair this product without authorization. We are not responsible for the products that have been dismantled and repaired privately.

Please keep your receipt as proof of purchase to quality warranty

▲ Warning: This product is only suitable for adults aged 18years or above. Changes or modifications not expressly approved by the party responsible for compliance could void the user's authority to operate the equipment. This equipment has been tested and found to comply with the limits for a Class B digital device, pursuant to Part 15 of the FCC Rules. These limits are designed to provide reasonable protection against harmful interference in a residential installation. This equipment generates uses and can radiate radio frequency energy and, if not installed and used in accordance with the instructions, may cause harmful interference to radio communications. However, there is no guarantee that interference will not occur in a particular installation. If this equipment does cause harmful interference to radio or television reception, which can be determined by turning the equipment off and on, the user is encouraged to try to correct the interference by one or more of the following measures:
- Reorient or relocate the receiving antenna.
- Increase the separation between the equipment and receiver.
- Connect the equipment into an outlet on a circuit different from that to which the receiver is connected.

Consult the dealer or an experienced radio/TV technician for help.

Producer: Guangzhou Yeying Electronic Technology Co., Ltd.
After-service Address: No.98, Tongya East Street, XichangRoad, Baiyun District , Guangdong China
Tel: 020-37601193
FCC ID :2BGF2-YY622