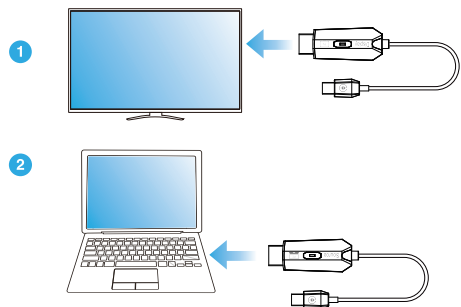


360.00 mm

125.00 mm

## GT-HD02 Quick Guide

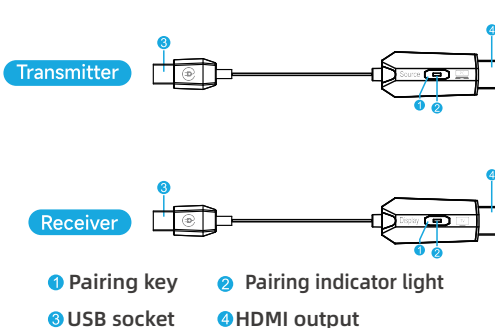


### Installation steps:

1. Connect the HDMI and USB ports of the receiver to the display device such as the TV or projector.
2. Connect the HDMI and USB ports of the transmitter to the signal source such as laptops, desktops, set-top box, cameras, and camcorders.
3. After the connection is complete, the blue light of the transmitter will flash first. Once the connection is successful, the light will be steady on and the image will appear on the screen.
4. Normally, the transmitter does not require external power supply. If the transmitter fault light flashes (the HDMI power supply of the signal source may be insufficient), an external power supply needs to be connected to supply power from the USB port.

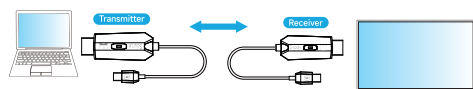
### Note:

1. The operating temperature of the equipment is around 50 degrees Celsius, which is a normal temperature and does not affect its use.
2. The equipment has been paired before leaving the factory. If it cannot be used, it should be re-paired.
3. The light at the receiving end will remain constantly on and only serve as a power indicator.
4. If the pairing indicator light keeps flashing slowly after being connected to an external power supply, it needs to be re-paired. The pairing method can be referred to the following content.

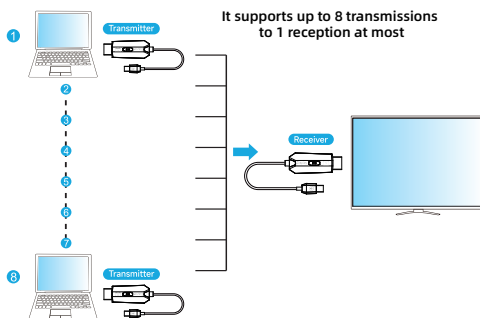


- 1 Pairing key 2 Pairing indicator light  
3 USB socket 4 HDMI output

### Support one-on-one mode



### Support many-to-one mode



### Pairing method.

According to the one-to-one pairing method, the first transmitter will be paired with the receiver, after successful pairing, the second transmitter will be paired one-to-one with the receiver, and so on will be the third, fourth, fifth, sixth, seventh and eighth transmitters respectively with the same receiver. When each transmitter is successfully paired with the same receiver, the pairing is completed and the power can be turned on. (Remarks: Multi-pair support up to eight transmitters to one receiver)

### Usage method

Usage method: Multiple transmitters to one receiver support up to 8 to 1, when switching, you need to press the pair key of the transmitter, for example: current display of the No. 1 transmitter, if you want to display the No.2 transmitter, at this time, press the pair key on the No. 1 transmitter (the display screen shows the pairing tick screen), then press the pair key on the No.2 transmitter to switch to the screen of the No.2 unit, and so on. Note: Each transmitter can be displayed arbitrarily.

## Wireless Transmitter Pairing Method

### Pairing Steps 1 Receiver side

- (1) Connect the receiver USB port to the USB power supply or device with USB port
- (2) Connect the receiver HDMI port to the display device.
- (3) Long press the reset pairing button on HDMI side of the receiver for about 2 seconds (not so long), wait for the screen to display "Release the button to pair with Mate" then immediately release the button



### 2 Transmitter side

- (1) Connect the transmitter USB port to a USB-powered device, and wait for the screen to display "Ready to pair"
- (2) Long press the reset pairing button for about 5 seconds, wait until the signal light goes off and release the button, then wait for the screen to show "V" to indicate pairing is successful.
- (3) Then wait for the screen to show "V" to indicate successful pairing.



### Attention:

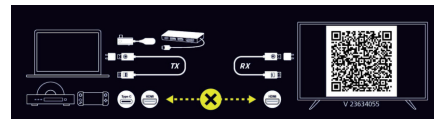
The press key on the receiver side of the wireless transmission has two setting modes depending on the pressing time.

- (1) Press and hold for 2 seconds: open the pairing mode of the receiver for pairing with the transmitter, so the pairing can not be pressed for too long
- (2) Long press 10 seconds: the receiver back to the original factory settings.

## Common Problem

1. Under what circumstances is it necessary to switch to a mobile phone charger for power supply

- (1) No picture appears on the TV or projector
- (2) The indicator light of the transmitter on the TV or projector display connection interface keeps flashing



2. Under what circumstances is re-pairing necessary?

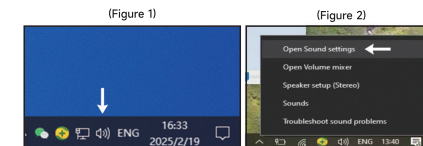
- (1) The indicator light of the transmitter on the TV or projector display connection interface keeps flashing



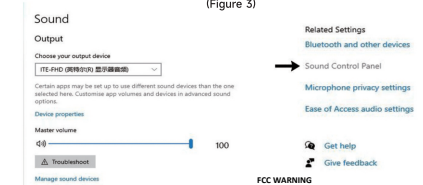
## Common Problem

3. How should it be set when there is no sound

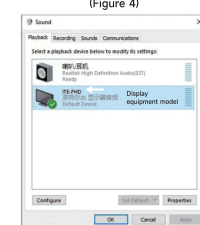
- (1) Find the "small speaker" icon at the lower right corner of the computer (Figure 1)
- (2) Move the mouse to the small speaker icon and press the right key "Open Sound Settings" option (Figure 2)
- (3) Move the mouse to the "Sound Control Panel" option (Figure 3) and open the Sound Control Panel
- (4) Change the "Display equipment model" option to the default setting (Figure 4)
- (5) If there is still no sound, please restart the computer.



(Figure 1) (Figure 2)



(Figure 3)



(Figure 4)

- Related Settings  
Bluetooth and other devices  
Sound Control Panel  
Microphone privacy settings  
Ease of Access audio settings  
Get help  
Give feedback

### FCC WARNING

This device complies with part 15 of the FCC Rules. Operation is subject to the following two conditions: (1) this device may not cause harmful interference, and (2) this device must accept any interference received, including interference that may cause undesired operation.

NOTE: This equipment has been tested and found to comply with the limits for a Class B digital device, pursuant to Part 15 of the FCC Rules. These limits are designed to provide reasonable protection against harmful interference in a residential installation. This equipment generates, uses and can radiate radio frequency energy and, if not installed and used in accordance with the instructions, may cause harmful interference to radio communications. However, there is no guarantee that interference will not occur in a particular installation.

If this equipment does cause harmful interference to radio or television reception, which can be determined by turning the equipment off and on, the user is encouraged to try to correct the interference by one or more of the following measures:

- Reorient or relocate the receiving antenna.
- Increase the separation between the equipment and receiver.
- Connect the equipment into an outlet on a circuit different from that to which the receiver is connected.
- Consult the dealer or an experienced radio/TV technician for help.

The device has been evaluated to meet general RF exposure requirement. The device can be used in portable exposure condition without restriction.