



SHENCHEN MANWIN TECHNOLOGY CO., LTD

MANWIN (HK) INDUSTRIAL CO., LTD

Doc. NO#	MW-T8S-2
Product description	Invisible wireless charger
Level	3
Page	1/9

Product Specification

Product Description: Invisible Under Desk Wireless charger

Model NO#: T8S

SAP NO#: 1188002886



SHENCHEN MANWIN TECHNOLOGY CO., LTD

MANWIN (HK) INDUSTRIAL CO., LTD

Doc. NO#	MW-T8S-2
Product description	Invisible wireless charger
Level	3
Page	2/9

1、 Brief Introduction

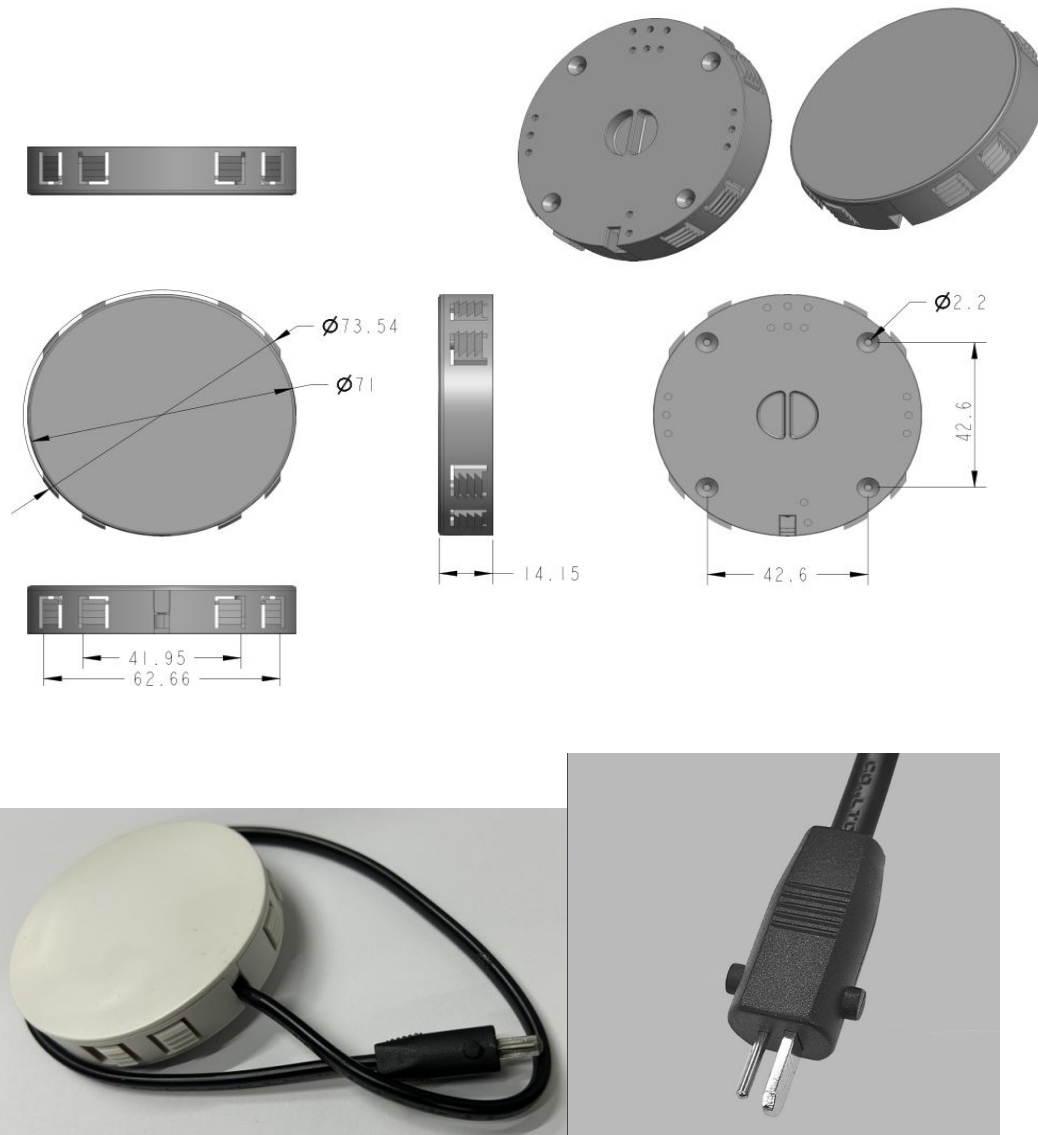
- This device is the design with invisible pattern\ fast charging and simple structure to bring fashion impression to our customers.
- This device is applicable for other devices with Qi standard. The wireless charging is made of Flame retardant material and compatible for iPhone 8 or above iPhone, Samsung S6 edge, S7, S8, Note 10, Note 7, Note 8, Note 9 fast charging.
- Easy to connect with relative QC3.0 adaptor and cables. Aim to offer convenient and safe feeling to our ending customers.

2、 Character:

- Effective of charging: 70~80%;
- The effective charging distance of this under table wireless charger is 0-6mm. It can charge through surfaces such as wood, granite, marble, glass, plastic and quartz. Our Wireless charger cannot be charged through metal, if your phone case contains metal on the back, please remove the phone case to charge! Please do not put your phone directly on the charger for testing.
- This wireless charging pad provides overcharging and heat protection. The internal safety switch guarantees that no harm will ever come to your device while charging it normally. No drilling or tools required, you can peel off the double-sided tape on the bracket surface and quickly install it underneath the table. No permanent damage. Our Wireless charger is universally compatible with all wireless phones. For iPhone series such as iPhone 15/15 Plus/15 Pro/15 Pro Max/14/14 Plus/14 Pro/14 Pro Max/13/13 Pro/13 Pro max/12/12 Pro/12 Pro max/12 mini/SE/11/11 pro/11 Pro max/X/Xs/Xs Max/8/8 Plus. For Samsung phones such as Galaxy S22/S21/S20/S10/9/8/7 series, Note20 Ultra/Note20/Note10/9/8/7/5. And other wireless phones and headphones. (Can not charge watch) mount to your desktop or counter.
- FOD function
- Our device protect in case of over-wattage, over-heating, over-loading, short circuit
- Charging Distance: 0~6mm

3、 Product View (3M is optional)





● Specification:

Input: 15V-36 V, when charging with 12-20V, the current of adaptor should be over 2A;
20-36V, need 1A at least

Output: 5W 、 7.5W、 10W 、 15W

Charging Distance: 0-6mm

Material: ABS (Flame retardant)

Color: White

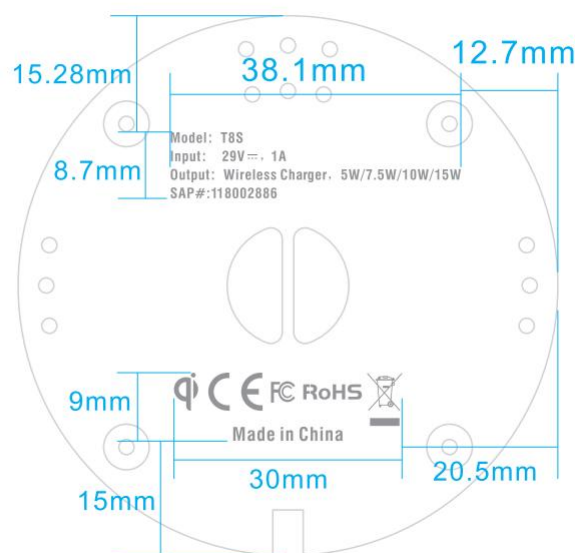
Net weight: 70g

Dimension: 73mm*15mm

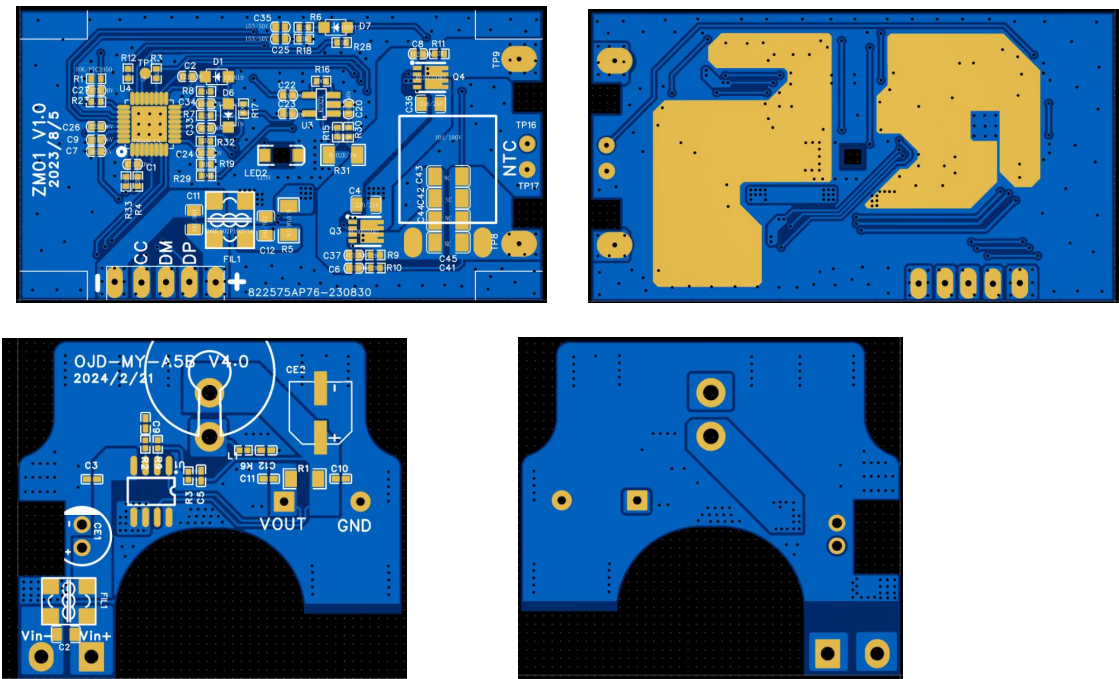
Length of cable: visible part -- 45CM

Plug: 01

4、Rating Label



5. Product circuit diagram





深圳满赢科技有限公司
香港满赢实业有限公司

文件編號	MW-T8S-2
產品名稱	鑲入式无线充电器
階次	3
頁次	7/9

6. BOM

No.	Name		Designator
1	106/50V		C2
3	100nF 50V		C3, C10, C11
3	1nF 50V		C5
4	226/25V		C6, C7
5	404/100V		C8
6	4.7nf 50V		C9
7	2.2nf 50V		C12
8	472/50V		C14, C16, C17
9	473/50V		C18, C21, C26, C27, C30
10	153/50V		C19, C20, C28, C29
11	105/25V		C22, C23
12	225/16V		C24, C25
13	222/50V		C31
14	220uf 50V 8x16		CE1
15	470uF16V 5.5x11		CE2
16	1N5819		D1, D2, D3
17	BWMF502P102P3A 共模		FIL1
18	44125 0.7 线径 差模 33uh		L1
19	LEDR		LED1
20	RU30D20M3		Q1, Q2
21	0.018Ω 1%		R1
22	3kΩ 1%		R2
23	200K 1%		R3
24	2R 5%		R4, R5, R7, R8, R10, R11, R12, R17, R18
25	4.7R 5%		R6
26	22K 1%		R9
27	0.02R/1%		R13
28	3.3K 1%		R14, R22
29	100R 5%		R15
30	0.01R/1%		R16
31	1K 1%		R19, R21
32	100K 1%		R20, R24
33	33K 1%		R23, R27
34	5.1K 1%		R25
35	10K/NTC3950		R26
36	10K 1%		R28
37	SP1286FAC	SI-POWER	U1
38	IP6808-UA	INJOINIC ZMO	U2

39	INJOINIC	INJOINIC	U3
----	----------	----------	----

7、Packaging:

7.1 Sell unit: 1*Product ;

7.2 White box without printing

7.3 No Inner box; 200pcs/master

无线充&USB模组外箱

尺寸: 410*410*420mm (内尺寸: 400*400*400mm)

材质: S414F

装箱数量: 200PCS



标签尺寸7*2cm

T3黑色118002741

T3白色118002760

T8 12V白色118002740

T8S 内降压白色118002886

T8S 外降压白色118002822

8. Certification

● Qi、CE、FCC、ROHS

9. FCC warning

This device complies with part 15 of the FCC Rules. Operation is subject to the following two conditions:(1) This device may not cause harmful interference, and (2) this device must accept any interference received, including interference that may cause undesired operation.

Any Changes or modifications not expressly approved by the party responsible for compliance could void the user's authority to operate the equipment.

This equipment has been tested and found to comply with the limits for a Class B digital device, pursuant to part 15 of the FCC Rules. These limits are designed to provide reasonable protection against harmful interference in a residential installation. This equipment generates uses and can radiate radio frequency energy and, if not installed and used in accordance with the instructions, may cause harmful interference to radio communications. However, there is no guarantee that interference will not occur in a particular installation. If this equipment does cause harmful interference

to radio or television reception, which can be determined by turning the equipment off and on, the user is encouraged to try to correct the interference by one or more of the following measures:

- **Reorient or relocate the receiving antenna.**
- **Increase the separation between the equipment and receiver.**
- **Connect the equipment into an outlet on a circuit different from that to which the receiver is connected.**
- **Consult the dealer or an experienced radio/TV technician for help.**

FCC RF exposure statement:

The equipment complies with FCC radiation exposure limits set forth for an uncontrolled environment. This equipment should be installed and operated with minimum distance between 20cm the radiator your body.