



SAFETY INSTRUCTIONS

1. This charger is for indoor use only. Do not expose the charger to liquids, rain, moisture or excessive heat caused by heating equipment or direct sunlight.
2. Do not use the charger if it has received a sharp blow, been dropped, or damaged.
3. To reduce the risk of shock, disconnect power source (adapter) before attempting any maintenance or cleaning of the charger.
4. Do not attempt to repair the charger yourself. For service repair, please contact a qualified service technician.
5. Please do not attempt to disassemble this product.
6. Store the charger in a cool and dry place when not in use.
7. Please keep the charger away from children.
8. Pacemakers may be affected by electromagnetic interference which could cause malfunctions to occur. Make sure the product is at least 22cm away from anyone with a pacemaker implanted. Also, make sure there is no using a pacemaker in the immediate surroundings.
9. Do not place magnetic or chip cards (i.e. Credit card, bank card, etc.) too close to avoid magnetic failure.



Made in China



FCC Warning

This device complies with part 15 of the FCC Rules. Operation is subject to the following two conditions: (1) This device may not cause harmful interference, and (2) this device must accept any interference received, including interference that may cause undesired operation.

Any Changes or modifications not expressly approved by the party responsible for compliance could void the user's authority to operate the equipment.

This equipment has been tested and found to comply with the limits for a Class B digital device, pursuant to part 15 of the FCC Rules. These limits are designed to provide reasonable protection against harmful interference in a residential installation. This equipment generates uses and can radiate radio frequency energy and, if not installed and used in accordance with the instructions, may cause harmful interference to radio communications. However, there is no guarantee that interference will not occur in a particular installation. If this equipment does cause harmful interference to radio or television reception, which can be determined by turning the equipment off and on, the user is encouraged to try to correct the interference by one or more of the following measures:

- Reorient or relocate the receiving antenna.
- Increase the separation between the equipment and receiver.
- Connect the equipment into an outlet on a circuit different from that to which the receiver is connected.
- Consult the dealer or an experienced radio/TV technician for help.

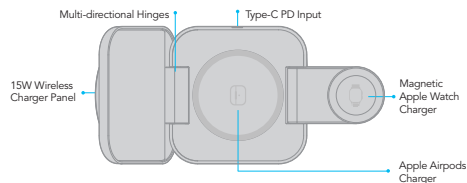
FCC RF exposure statement:

The equipment complies with FCC radiation exposure limits set forth for an uncontrolled environment. This equipment should be installed and operated with minimum distance between 20cm the radiator your body.

Hello!

Qi2 3-in-1 Foldable Magnetic Wireless Charger

UNWXC-T11



Product Introduction

Thank you for choosing our Qi2 3-in-1 Foldable Magnetic Wireless Charger. Before you use this product, please read this manual carefully and keep it for future reference.

Specification

Input: DC9V 3.4A

Output: Mobile Phone 15W Max, Earphone 5W, Watch 2.5W

Product Size: 70*70*22mm

Product Weight: 130g

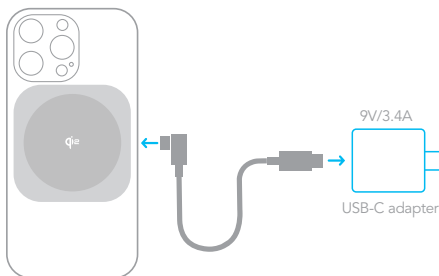
Transmission Distance: 1-4mm

Material: Aluminum Alloy+High Alumina Glass+ABS+PC

Qi2-Enabled Smartphones

The Qi2 logo is a trademark of the Wireless Power Consortium.

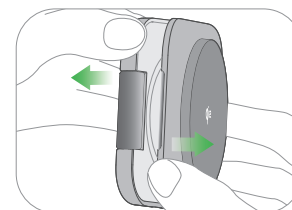
2 How to connect ?



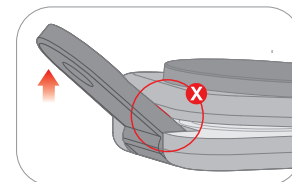
For optimal performance

Use a USB-C power adapter with a minimum input of 9V/3.4A (30W)

1 Read before use.



How to unfold the product
Please unfold it from the watch charger's hinge to both sides



Please do not unfold the product like above as this may cause scratches on the surface of the watch charger