

# CommandX-A/V Quick Manual

## 1. Working Mode

The camera has three working modes: On, Setup, and Off (as shown below).



### **ON mode :**

When you switch the camera into on mode, the camera will work according to the camera menu settings shortly.

### **SETUP mode:**

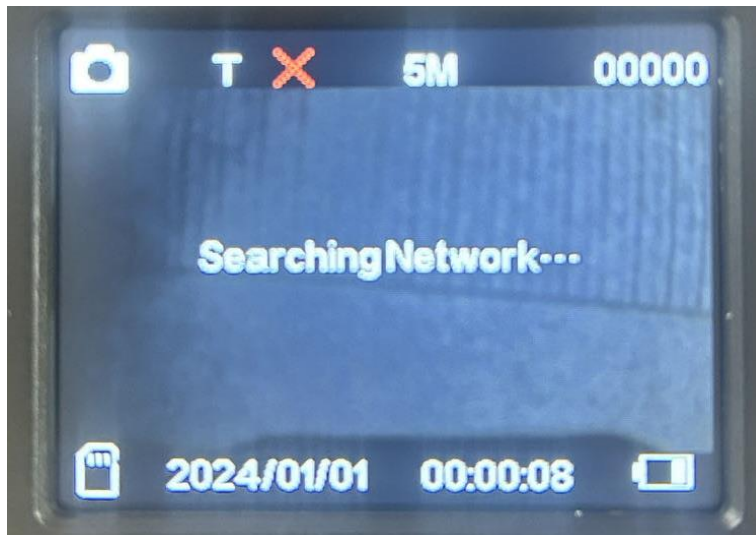
When you switch the camera into setup mode, you can set the menu settings or change the settings.

### **OFF mode:**

When you switch the camera into off mode, the camera is powered off.

## 2.The main interface and button functions

### 2.1 Main interface



As shown in the figure above, the camera enters the main interface after power on.

## 2.2 Buttons

(As shown below) The camera has 6 buttons



Menu button is for menu setting ,press the menu button, the camera will enter the menu setting interface (as shown below)

The OK button means YES when you choose the settings. However, in order to make the settings to take effect, you must press the menu button again to return to the main interface.

The up, down, left, and right buttons can be used to select menu options.

When the camera is in the main interface, press the right button can take a photo manually. Each click take one picture.

### 3. Net function settings

#### 3.1 Send Mode(as shown below)



#### **Instant mode:**

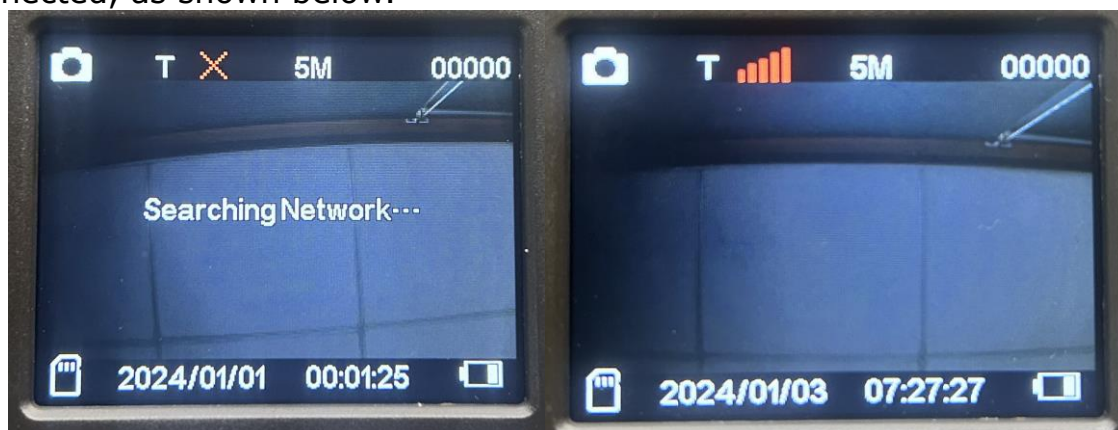
the camera uploads as long as the camera is triggered.(when you test the 4G module in on mode,please set the camera as instant)

#### **Off mode:**

to turn off net transmission.

#### 3.2 Test Mode

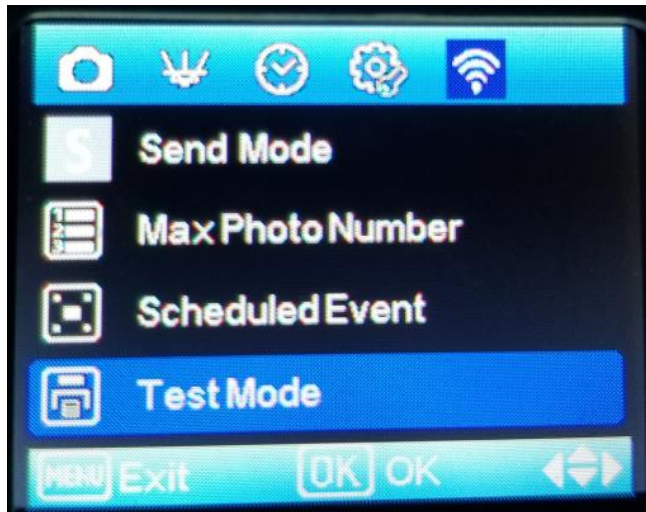
When the camera is powered on and enters the main interface, it will automatically search the network. There will be a signal bar when the network is connected, as shown below.



After the network is connected. Press the right button on main interface.Then the camera will take a photo manually.



Then enter the menu and chose Test Mode, press the ok button.



If the image is uploaded successfully, the following image will appear.



Then the photo is upload to the server successful.

If the image upload fails, the following image will appear.



You can go back check whether the network is connected. Also. Double check whether the manually photo been taken successfully.

### 3.3 MaxPhoto Number



**Maximum number:** maximum photo numbers uploaded per day, option from from 1-99 photos,

OFF mean no limit for upload photo numbers

### 3.4 Scheduled Event

**Scheduled Even:** The Scheduled Event function is to set a time point. Then the camera will take a photo and upload the photo every day at that point.

### 3.5 Module info



Enter the option to query the serial number information of the module

## 4. Camera Mode

In camera mode. We can set the camera to be photo, video or photo+video mode. (As shown below)



## 5. Trigger Mode

The camera has three trigger modes, Time-lapse, PIR trigger or both.

**Time-lapse:** When you set the camera into this mode. Camera will take photos or videos regularly. For example: when you set the interval time as 5mins. The camera will take photos or videos every 5mins.

**PIR trigger:** When you set the camera into this mode. Camera will take photos or videos as long as the infrared sensor senses the infrared change. It will then enter the standby state. Wait for the next infrared trigger. (As shown below)





## 6.Work time

The camera has two working time that can be set. After setting, the camera will only work in the corresponding time period.



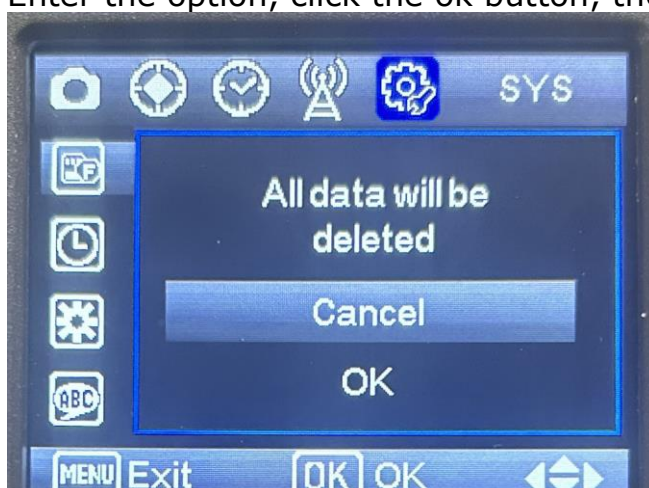
## 7.Common setting

Common setting interface (As shown below)



### 7.1 Format SD Card

Enter the option, click the ok button, the camera will automatically format.





## 7.2 Set Clock

Enter the option to set DATE.



## 7.3 Default

Enter the option and press OK. the camera will restore the default settings. Defaulting the setting after every FW update. (as shown below)



## 7.4 Overwrite

Enter the option and set it on. The camera will in loop coverage, thus it will keep the latest videos or pictures after the SD card is full, and delete the previous video picture.

## 7.5 Password set

Enter the option and put the option on. You can set a password consisted by 4 digital Numbers or letters

## 7.6 Rename

Enter the option, select on, you can set a camera name consisted by 4 digital Numbers or letters

## 7.7 Software Version

Enter the option to view the camera's software version



### Federal Communication Commission Interference Statement

This device complies with part 15 of the FCC Rules. Operation is subject to the following two conditions: (1) This device may not cause harmful interference, and (2) this device must accept any interference received, including interference that may cause undesired operation.

This device has been tested and found to comply with the limits for a Class B digital device, pursuant to Part 15 of the FCC Rules. These limits are designed to provide reasonable protection against harmful interference in a residential installation. This equipment generates, uses, and can radiate radio frequency energy, and, if not installed and used in accordance with the instructions, may cause harmful interference to radio communications. However, there is no guarantee that interference will not occur in a particular installation. If this equipment does cause harmful interference to radio or television reception, which can be determined by turning the equipment off and on, the user is encouraged to try to correct the interference by one or more of the following measures:

- Reorient or relocate the receiving antenna.
- Increase the separation between the equipment and receiver.
- Connect the equipment into an outlet on a circuit different from that to which the receiver is connected.
- Consult the dealer or an experienced radio/TV technician for help.

**FCC Caution:**

- Any Changes or modifications not expressly approved by the party responsible for compliance could void the user's authority to operate the equipment.
- The antenna(s) used for this transmitter must not be co-located or operating in conjunction with any other antenna or transmitter.
- The country code selection is for non-US model only and is not available to all US model.

**RF Exposure Information (SAR)**

This equipment complies with FCC radiation exposure limits set forth for an uncontrolled environment. This equipment should be installed and operated with minimum distance 20cm between the radiator & your body.