

C8 User Manual

I. Download and install the APP

For Apple mobile phones, please enter the APP Store and search for the APP with the name 'HIDVCAM' to download and install, and for Android mobile phones, please scan the QR code below with your mobile browser to download and install the software.



Scan me with your browser to install the app



II. Product description

Switch on: Long press (ON/OFF) ON/OFF button for about 3 seconds, the blue light is always on and the green light is flashing slowly.

Switch off: Long press (ON/OFF) button for about 3 seconds to switch off the power.

Reset button: under the power on state, long press (R) button (blue and green lights off for about 3 seconds) the camera will automatically reset and reboot to the initial state.

TF card holder: Insert the memory card to save the recording files.

Please use genuine TF card, support 4-256G.

III. Indicator light display description

1. No network connection [AP Mode]: blue light long light green light slow flash.
2. Remote mode [IP mode]: blue and green double lights are long on.
3. Blue light long on, green light off (can't find network, need to restore factory settings).

4. Indicator light can be turned on/off on APP
5. Charging: Access to 5V/1A USB power charging (**does not support fast charging**), the red indicator light is always on when charging, the red indicator light is off when full.

IV. User registration and login

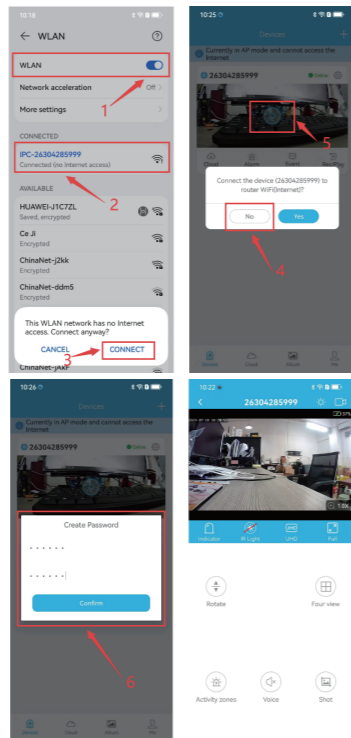
1, open the downloaded HIDVCAM, registration and login, support WeChat \ Facebook \ Twitter \ Line \ email registration and login.

(Some mobile phones will pop up permission settings when you open the APP, permission settings all open or allow)



V. Adding AP Camera (Close Viewing)

1. Long press (ON/OFF) ON/OFF button about 3 seconds the camera into standby (blue light long green light slow flash).
2. Mobile phone open WIFI settings, connect IPC-XXX hotspot name click to connect (**WIFI hotspot and product ID number is the same, such as did not find the same product ID number, long press the R button for 3 seconds to restore factory settings**)
3. Open 'HIDVCAM' APP In the device list, scroll down and refresh to see the connected devices.
4. Click and set the device password, after the password is set successfully, click OK to watch.

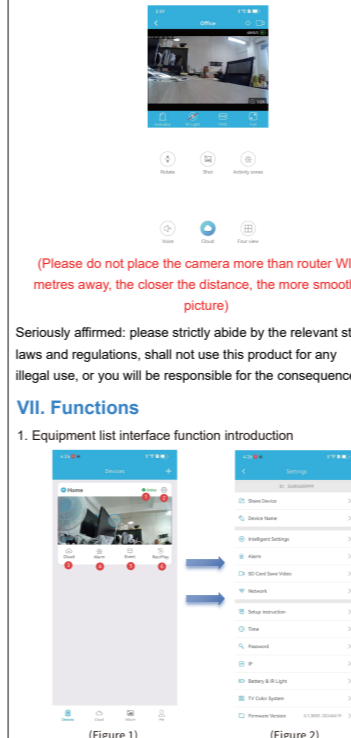
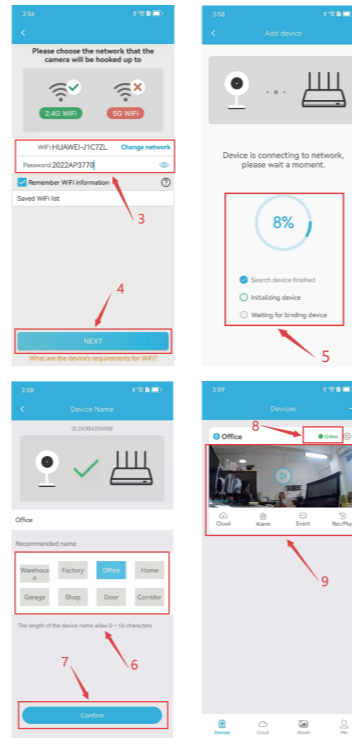
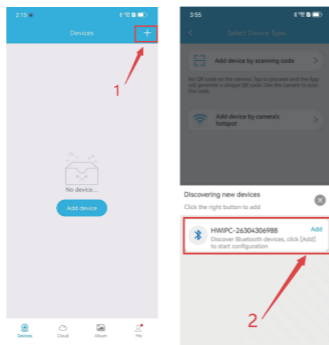


VI. Binding the router (remote viewing)

1: Press ON/OFF button to switch on the camera, start the process, wait for about 20 seconds, the blue light is long, the green light is slowly flashing to complete the switch on, add the camera through Bluetooth add method (make sure the mobile phone Bluetooth and GPS is on)

In the device list, click > ① Setting >> ② Add >> ③ Find the router that will be bonded and enter the password (only support 2.4G WiFi) >> ④ Next >> ⑤ The device is connecting to the network >> ⑥ Select the scene >> ⑦ Confirm >> ⑧ Show Online >> ⑨ Click Play to watch it remotely.

Note: When connecting, please make sure the distance between the camera and the router is not more than 3 metres, only support 2.4GHz WiFi and the name and password are composed of letters or numbers, do not support WiFi name and password containing Chinese and special symbols.



- ① Status display
- ② Click on the settings button, it will jump to the advanced configuration page (Figure 2) can be set according to the needs of their own adjustments
- ③ Cloud storage
- ④ Alarm: turn on/off the alarm with one click.
- ⑤ Message: view the picture of the alarm
- ⑥ Playback: view TF card video and cloud video.

2. Video Playback Interface Functions

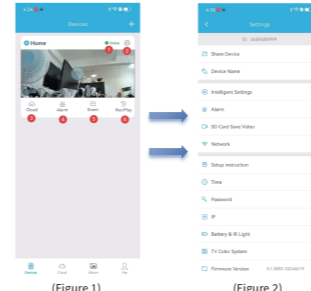


(Please do not place the camera more than router WIFI 5 metres away, the closer the distance, the more smooth the picture)

Seriously affirmed: please strictly abide by the relevant state laws and regulations, shall not use this product for any illegal use, or you will be responsible for the consequences!

VII. Functions

1. Equipment list interface function introduction



① Adjust screen brightness	⑦ Video Flip
② Local video recording	⑧ Screenshot
③ One key to turn off/on the device indicator light	⑨ Four screens
④ One key to turn on/off the device night vision IR light	⑩ Set mobile alarm area
⑤ Switch the video clarity	⑪ Cloud video
⑥ Watch full screen	⑫ monitor switch

Seriously affirmed: please strictly abide by the relevant state laws and regulations, shall not use this product for any illegal use, or you will be responsible for the consequences!

VIII. Troubleshooting

1. If you change the network environment, please reset the camera first, and then reconfigure the WiFi.
2. If the camera does not recognise the memory card, please replace the memory card or format it before use.

3. Before switching off the camera, please stop the video

recording on the app, so that the last video file will not be saved and lost or damaged.

4. The camera will have a certain amount of heat in the work,

but does not affect the performance can be used without worry.

5. Please access to 5V/1A USB charger charging, do not access the voltage greater than 5V power charging.

6. If the screen is loading or there is no screen, just exit the APP and enter from the new one.

7. If the screen is seriously stuck, please check the router signal and product power.

Warning:

changes or modifications not expressly approved by the party responsible for compliance could void the user's authority to operate the equipment.
This device complies with Part 15 of the FCC Rules. Operation is subject to the following two conditions:
(1) this device may not cause harmful interference, and
(2) this device must accept any interference received, including interference that may cause undesired operation.

Note: This equipment has been tested and found to comply with the limits for a Class B digital device, pursuant to Part 15 of the FCC Rules. These limits are designed to provide reasonable protection against harmful interference in a residential installation. This equipment generates, uses, and can radiate radio frequency energy, and if not installed and used in accordance with the instructions, may cause harmful interference to radio communications. However, there is no guarantee that interference will not occur in a particular installation. If this equipment does cause harmful interference to radio or television reception, which can be determined by turning the equipment off and on, the user is encouraged to try to correct the interference by one or more of the following measures:
- Reorient or relocate the receiving antenna.
- Increase the separation between the equipment and receiver.
- Connect the equipment into an outlet on a circuit different from that to which the receiver is connected.
- Consult the dealer or an experienced radio/TV technician for help.

This equipment complies with FCC radiation exposure limits set forth for an uncontrolled environment. This equipment should be installed and operated with a minimum distance of 20cm between the radiator & your body. This transmitter must not be co-located or operating in conjunction with any other antenna or transmitter.