

Compliance FCC Statement

This equipment has been tested and found to comply with the limits for a Class B digital device, pursuant to part 15 of the FCC Rules. These limits are designed to provide reasonable protection against harmful interference in a residential installation. This equipment generates, uses and can radiate radio frequency energy and, if not installed and used in accordance with the instructions, may cause harmful interference to radio communications. However, there is no guarantee that interference will not occur in a particular installation. If this equipment does cause harmful interference to radio or television reception, which can be determined by turning the equipment off and on, the user is encouraged to try to correct the interference by one or more of the following measures:

- Reorient or relocate the receiving antenna.
- Increase the separation between the equipment and receiver.
- Connect the equipment into an outlet on a circuit different from that to which the receiver is connected.
- Consult the dealer or an experienced radio/ TV technician for help.

This device complies with part 15 of the FCC Rules. Operation is subject to the following two conditions: (1) This device may not cause harmful interference, and (2) this device must accept any interference received, including interference that may cause undesired operation.

Caution
Any changes or modifications not expressly approved by the party responsible for compliance could void the user's authority to operate the equipment.

FCC Radiation Exposure Statement
This equipment must be installed and operated in accordance with provided instructions and the antenna(s) used for this transmitter must be installed to provide a separation distance of at least 20 cm from all persons and must not be co-located or operating in conjunction with any other antenna or transmitter. End-users and installers must be provide with antenna installation instructions and transmitter operating conditions for satisfying RF exposure com

1. APP INSTALLATION

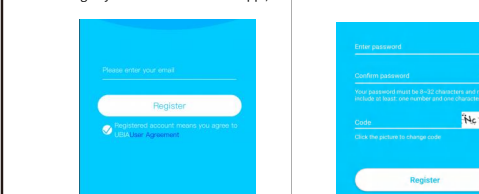
(1.) Scan the following QR codes or search for "UBOX" from the App Store(for iOS devices) or Google Play Store (for Android smartphones) to download and install the app.



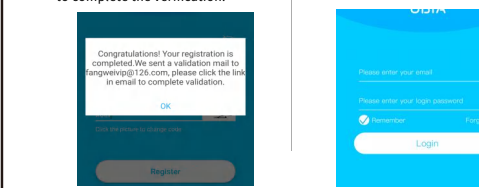
2. APP REGISTRATION

(1.) Open the app then input your E-mail address then press 'Register'.
Check and select to agree the agreement then your E-mail box will get an verification mail.

(For better user's experience, please allow to open all permissions to avoid missing any notifications from the app.)



(3.) We send a verify mail to you, go to your mail box click the link to complete the verification.

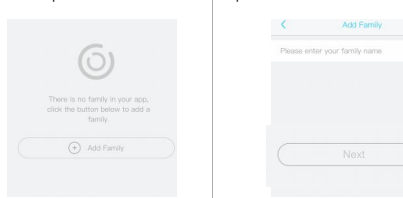


(4.) Enter your E-mail address, and password, click login.
(APP will auto fill the account information)

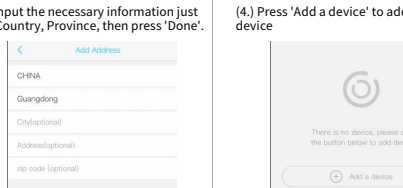


3. WI-FI CONNECTION

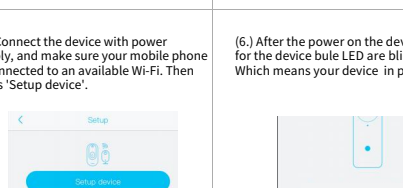
(1.) Press 'Add Family' then set the room or position as per reminders.



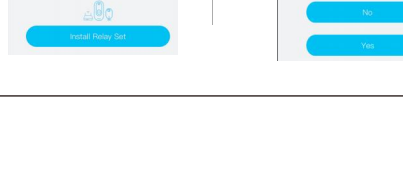
(2.) Enter your family name and then press 'Next'.



(3.) Input the necessary information just like Country, Province, then press 'Done'.

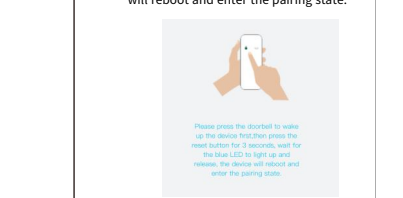


(4.) Press 'Add a device' to add a smart device

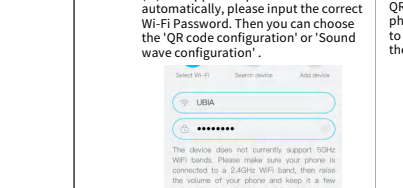


4. USING THE APP

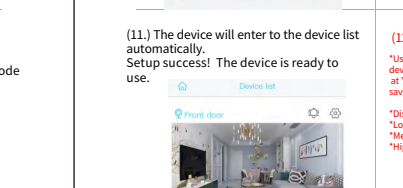
(7.) If the device blue light is not blinking, please press the power/call key to wake up the device first, then hold and press the RESET button until the blue indicator to light up and then release. The device will reboot and enter the pairing state.



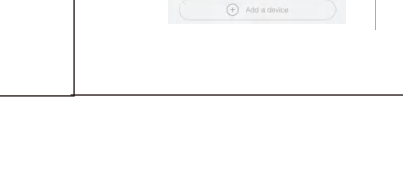
(8.) Set the device name and select the device location before setup.



(9.) The app will input the Wi-Fi name automatically, please input the correct Wi-Fi Password. Then you can choose the 'QR code configuration' or 'Sound wave configuration'.



(10.) QR code configuration: Select the QR code configuration then the mobile phone display a QR code. Use the device to scan to the QR code 10cm away from the mobile phone.



5. SPECIAL NOTES!

(1.) The device is equipped with a rechargeable lithium battery. The battery life will be affected by the device wake-up time and the number of wake-ups. Therefore, the PIR sensor alarm detection function is used in a environment with a lot of people. It is recommended to turn off or set the device to low sensitivity to reduce device wake-up and call times extend battery life.

When the battery is low, please charge the battery immediately.

(2.) Keep the device in range of your router. Make sure the device is placed close to the Wi-Fi router. If there has to be thick or insulated objects between the device and the Wi-Fi router, which may lead to weak Wi-Fi signal, please make sure the Wi-Fi signal is in good level before you start using the device.

(3.) It is a delicate device with low power consumption design. Everytime the device is awakened and will work for few seconds. After that, the device will enter standby mode to save power. You can set the work time in the app settings.

(4.) Because the mainland China does not receive Google's system push messages, you need to open the app's self-starting function in your phone to receive push messages.

(5.) This device provides one month of free cloud storage and face recognition services. If you need to continue using value-added services after the trial period expires, you need to purchase them in the app.

6. APP SETTINGS

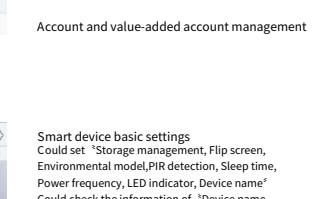
Enter to select your family or smart device location

Turn on/off the push notification.

Settings: Sharing, Cloud storage, Delete the device.

Press to enter the preview section.

Press to add a smart device



Account and value-added account management

Smart device basic settings
Could set "Storage management, Flip screen, Environmental model, PIR detection, Sleep time, Power frequency, LED indicator, Device name"

Could check the information of "Device name, Device ID, Model, FW version, Manufacturer, Check for the FW updates."

Turn on/off the speaker
Screenshot
Playback switch "Micro SD memory" and "Cloud storage"

Take a video for the live view
Microphone - Speak to the smart device side.



7. CLOUD SERVICE

Check "my account" name and change password;

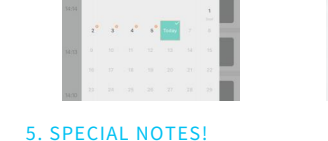
Check and purchase the Cloud storage;

Check and purchase the AI Cloud Facial Recognition;

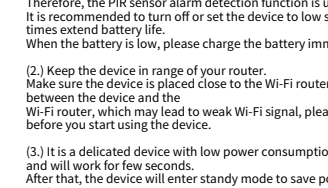
Check and add my friends list and permission;

Set the default voice and resolution for the devices;

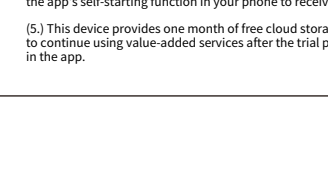
Check the App version.



Click the "Calendar" icon on the right top corner, then choose the date to playback the videos from cloud storage.



Choose the desired date to check all videos from the cloud.



User Guide

The user guide is for reference only. Screen shots displayed in this user's guide of the "UBOX" app may appear differently than those currently featured in your app as frequent updates and improvements.