

KSIPZE

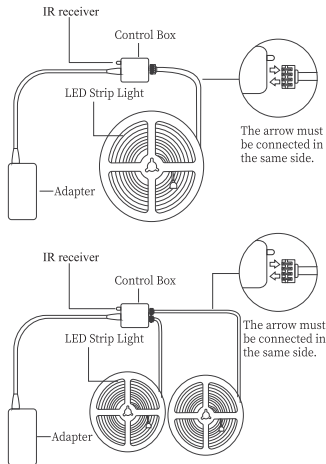
User Manual



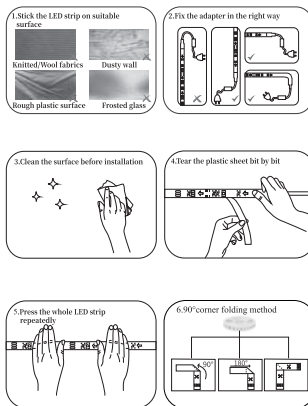
✉ Support@ksipze.com

LED Strip Light For Home With APP

Instruction



Key Points Of Installation



English

Packaginglist

LED strip light	1/2
Remote	1
Adapter	1
Control Box	1
User manual	1

Specifications

Color	RGB
Input	Adapter
Power	24w
Control method	Bluetooth/Remote
Operating	-20°C-45°C

APP SETTING

1. Power the strip light
2. Download and Install APP
Search and download the APP "HappyLighting" in APP store(iOS) or Google Play(Android)
3. Connecting power with the device then open the Bluetooth of your smart phone
4. Open the "HappyLighting" APP

Special Instructions

1. Only connect with one mobile phone at the same time. Use another phone, please quit the APP on the other phones.
2. If set "Device Mic" on APP, please click any 4 music mode on the bottom of the remote.
3. If set "phone Mic" on APP, the LED strip only can be controlled by phone,the remote can't control it.

Note

- 1.The arrows should be connected on the same line when you connect the strip lights.Arrow to Arrow is correct.
- 2.Please pull out the transparent chip from the bottom of the remote before using
- 3.In case of overheating, please spread out the led strip before using .Don't lightup over 1 minute if not spread.
- 4.Make sure the power is off when you cut the strip lights and you need to buy some connectors or more power supply from Amazon to connect it. So please do not cut the light randomly.

Warning

- 1.Please pay attention to anti-static during the installation and use of the product. Do not use a sharp tool to stab the strip, keep it away from strong chemicals such as strong acid and alkali.
- 2.There must be no conductive objects such as pushpin or metal at the contact surface between the strip and the wall. If there is, please remove or avoid it in advance to prevent short-circuit of the strip light and caused damages.
- 3.Please avoid the position of the LED components when the strip light is bent, or the strip will be damaged and shortened the useful life.

FCC Warning Statement

Changes or modifications not expressly approved by the party responsible for compliance could void the user's authority to operate the equipment. This equipment has been tested and found to comply with the limits for a Class B digital device, pursuant to Part 15 of the FCC Rules. These limits are designed to provide reasonable protection against harmful interference in a residential installation. This equipment generates uses and can radiate radio frequency energy and, if not installed and used in accordance with the instructions, may cause harmful interference to radio communications. However, there is no guarantee that interference will not occur in a particular installation. If this equipment does cause harmful interference to radio or television reception, which can be determined by turning the equipment off and on, the user is encouraged to try to correct the interference by one or more of the following measures:

- Reorient or relocate the receiving antenna.
- Increase the separation between the equipment and receiver.
- Connect the equipment into an outlet on a circuit different from that to which the receiver is connected.
- Consult the dealer or an experienced radio/TV technician for help.

This device complies with part 15 of the FCC Rules. Operation is subject to the following two conditions: (1) This device may not cause harmful interference, and (2) this device must accept any interference received, including interference that may cause undesired operation.

RF Exposure Statement

To maintain compliance with FCC's RF Exposure guidelines, This equipment should be installed and operated with minimum distance of 20cm the radiator your body. This device and its antenna(s) must not be co-located or operation in conjunction with any other antenna or transmitter.

Customer service

We are looking forward to provide the perfect services for you, and will pay attention to your feedback. Any question, please give me the letter.

✉ Support@ksipze.com