

T-MAX

WINCH MOUNTING


3. Recheck all cable rigging before proceeding.
4. Plug in the winch hand control. It is recommended that the winching operation takes place from the driver's position to ensure safe operation.
5. To commence winching operation, start vehicle engine, select neutral in transmission, maintain engine speed at idle.
6. Operate the remote control switch to the IN or OUT position until the vehicle has been retrieved. Regularly check the winch to ensure cable is winding onto the drum evenly.

NOTE: The gear box and motor assembly are not clockable. Attempting to do so can cause damage to the winch and voids warranty.

DO NOT FORCE CLUTCH Bolt.
Inspect rope before first use during the mandatory pre-stretching. Any defects must be noted before initial use.

Improper use, inadequate fairlead to bumper clearances, abuse, neglect, chafing damage are not covered by any warranty.

WINCH MOUNTING

 The fitment of winches and/or a frontal protection system may affect the triggering of SRS airbags. Check that the mounting system has been tested and approved for winch fitment in the airbag-equipped vehicle. Failure to comply may cause death or severe personal injury.

The winch is to be mounted into a suitable steel mounting frame using the 4-point foot mounting system either a horizontal or vertical plane. It is very important that the winch be mounted on a flat surface so that the three sections (motor, cable drum and gear housing) are properly aligned.

Winch mounting frames and/or frontal protection systems are suggested to suit most popular vehicles. Winch frames are packaged with detailed fitting instructions.

The winch should be secured to the mounting with the M10x 32mm bolts and spring washers provided. Winch plate must be at least 6mm thick. Thicker winch plates may require longer bolts (not included). Ensure winch mounting bolts protrude past the top surface of the square nut.

The roller fairlead is to be mounted so as to guide the rope onto the drum evenly.

WARNING

Please take attention that changes or modification not expressly approved by the party responsible for compliance could void the user's authority to operate the equipment.

This equipment complies with FCC radiation exposure limits set forth for an uncontrolled environment.

This device complies with Part 15 of the FCC Rules. Operation is subject to the following two conditions:

- (1) This device may not cause harmful interference, and
- (2) This device must accept any interference received, including interference that may cause undesired operation.

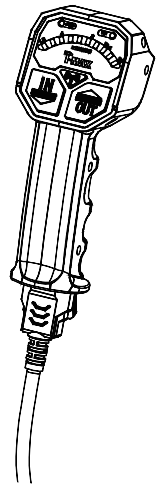
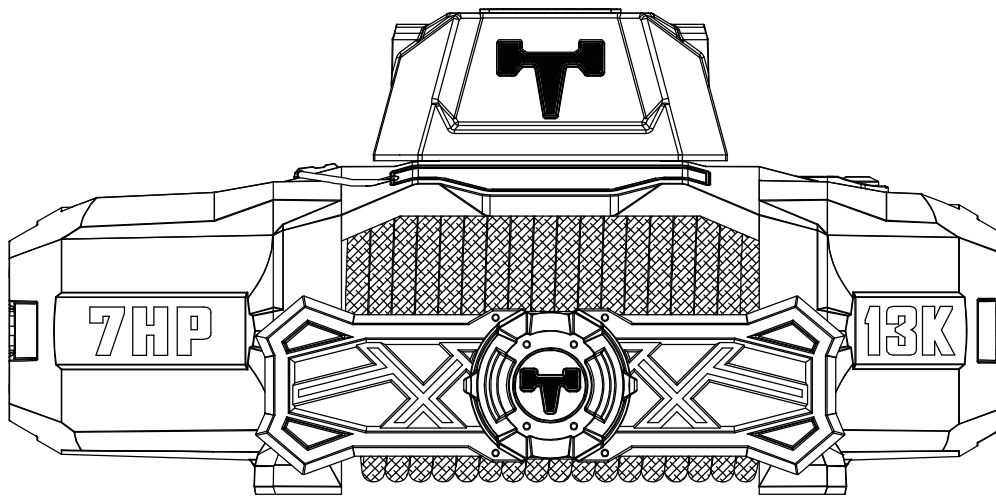
This device contains licence-exempt transmitter(s)/ receiver(s) that comply with Innovation, Science and Economic Development Canada's licence-exempt RSS(s). Operation is subject to the following two conditions:

- (1) This device may not cause interference.
- (2) This device must accept any interference, including interference that may cause undesired operation of the device.

L'appareil contient des émetteurs/récepteurs exempts de licence qui sont conformes aux CNR exempts de licence d'Innovation, Sciences et Développement économique Canada. L'exploitation est soumise aux deux conditions suivantes :

- (1) L'appareil ne doit pas produire de brouillage,
- (2) L'utilisateur de l'appareil doit accepter tout brouillage radioélectrique subi, même si le brouillage est susceptible d'en compromettre le fonctionnement.

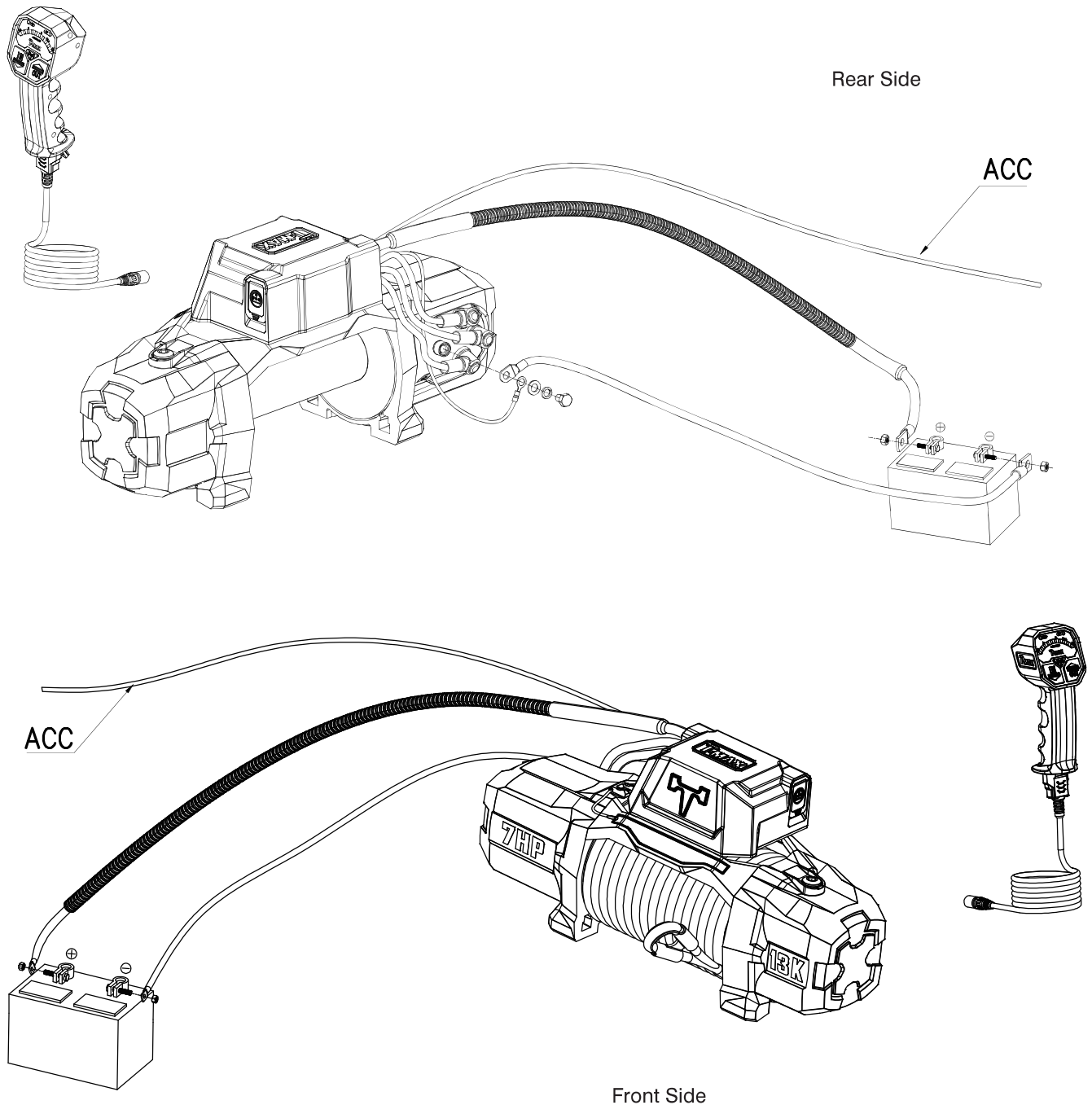
T-MAX



INSTALLATION INSTRUCTIONS

T-MAX

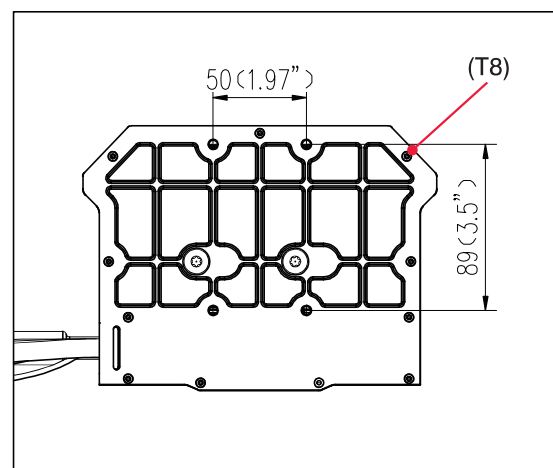
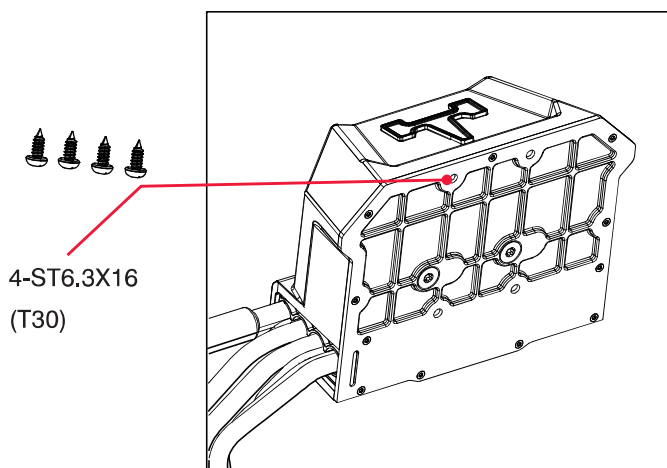
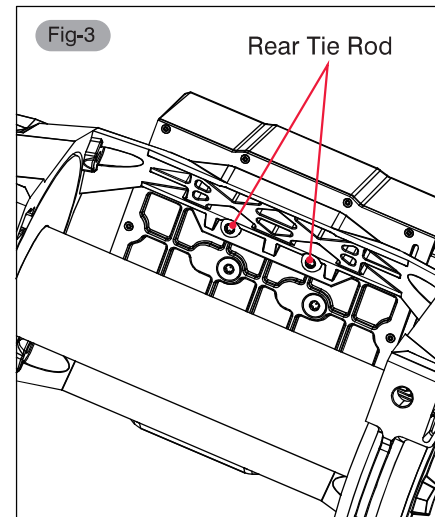
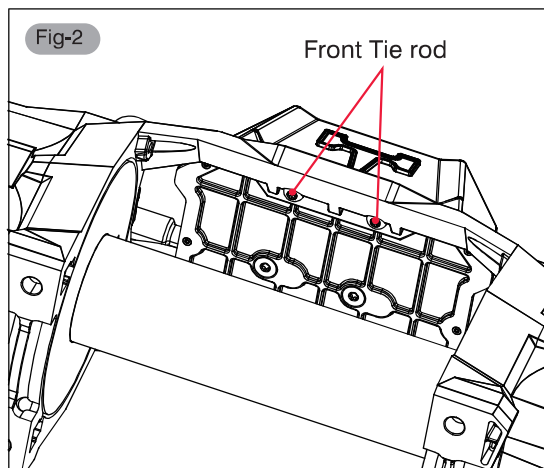
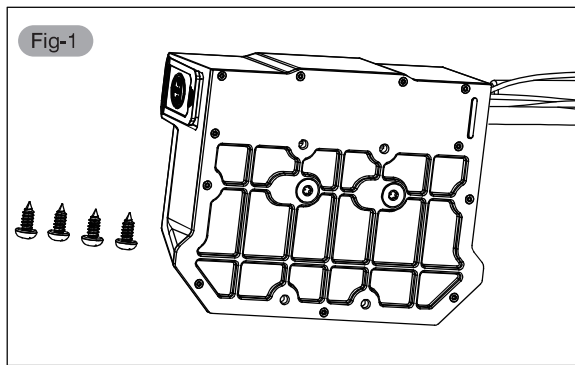
ELECTRICAL CONNECTIONS



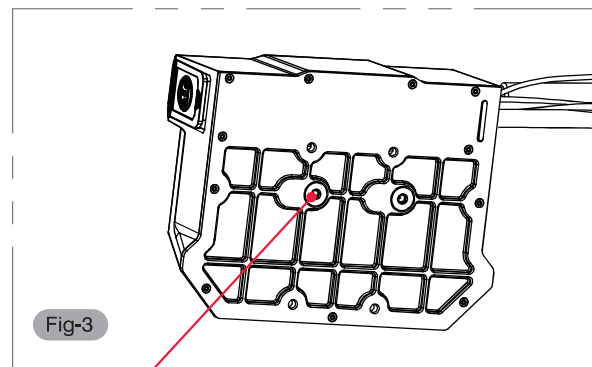
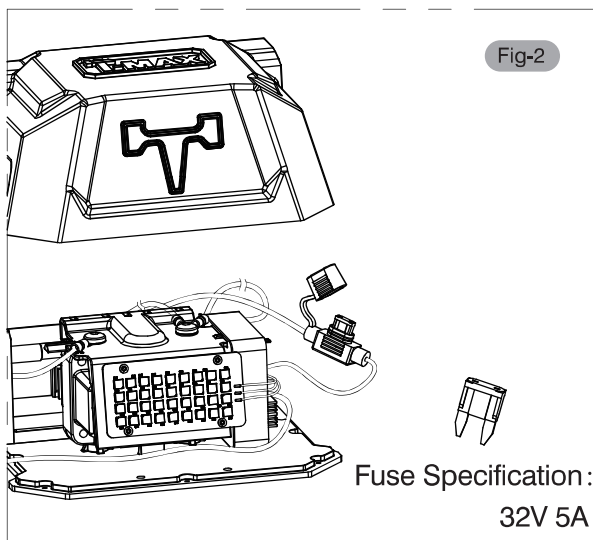
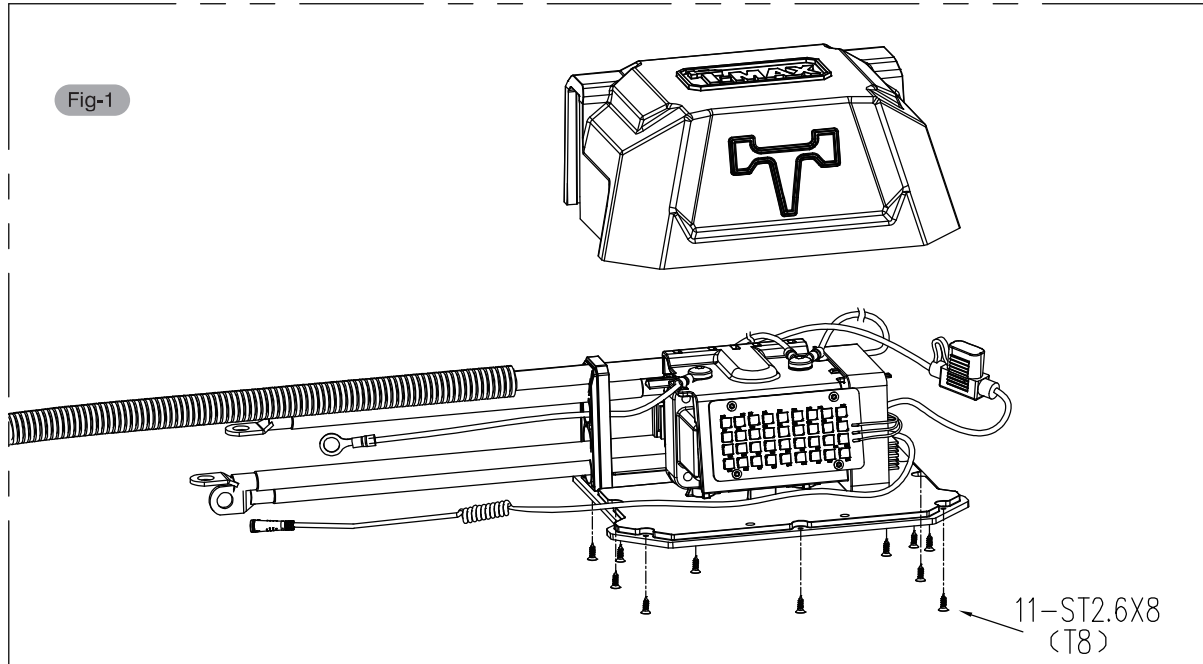
WARNING: Do not alter, change or amend winch wiring/connections.
Doing so can cause property or bodily injury and voids warranty.

T-MAX

CONTROL BOX MOUNTING



Control Box was fixed on the tie rod by four bolts as picture 2 and picture 3. Remote the four bolts directly as picture 1 can remove the control box.



Please make sure not loose or remove the two fix bolt at the bottom of control box, as picture 3. Which can cause the cable loosen and broken the inside component.

1. Power Off, open the control box cover and then can find the fuse same as picture 1.

Note: Make sure to change the fuse with same capacity current, do not choose the higher current fuse.

Note: Do not touch the spring antenna on the circuit.

2. If the fault is not resolved, it means the fault maybe exist in other circuit system, please check ASAP.

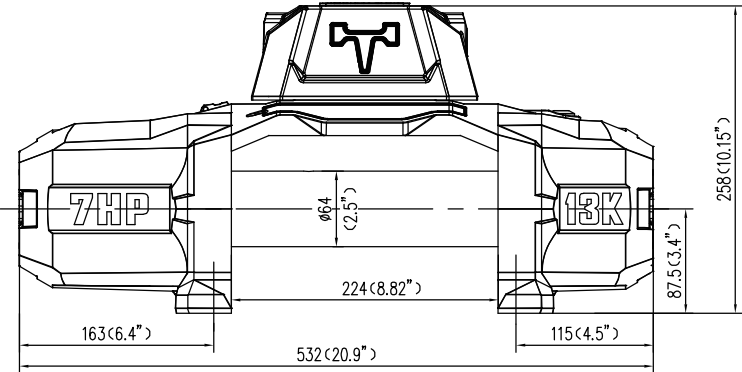
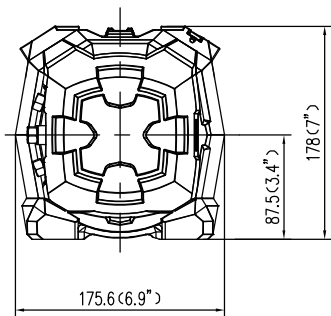
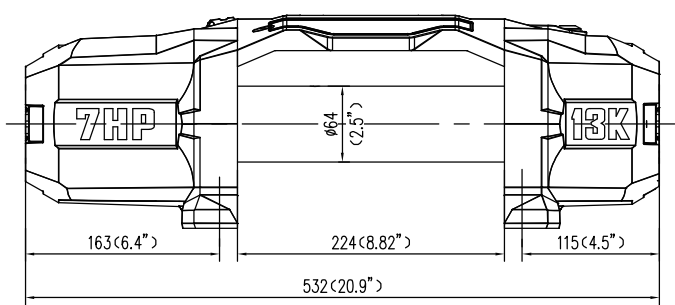
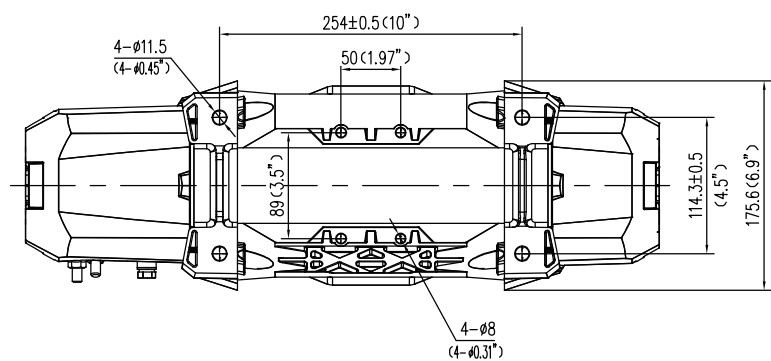


WINCH SPECIFICATION

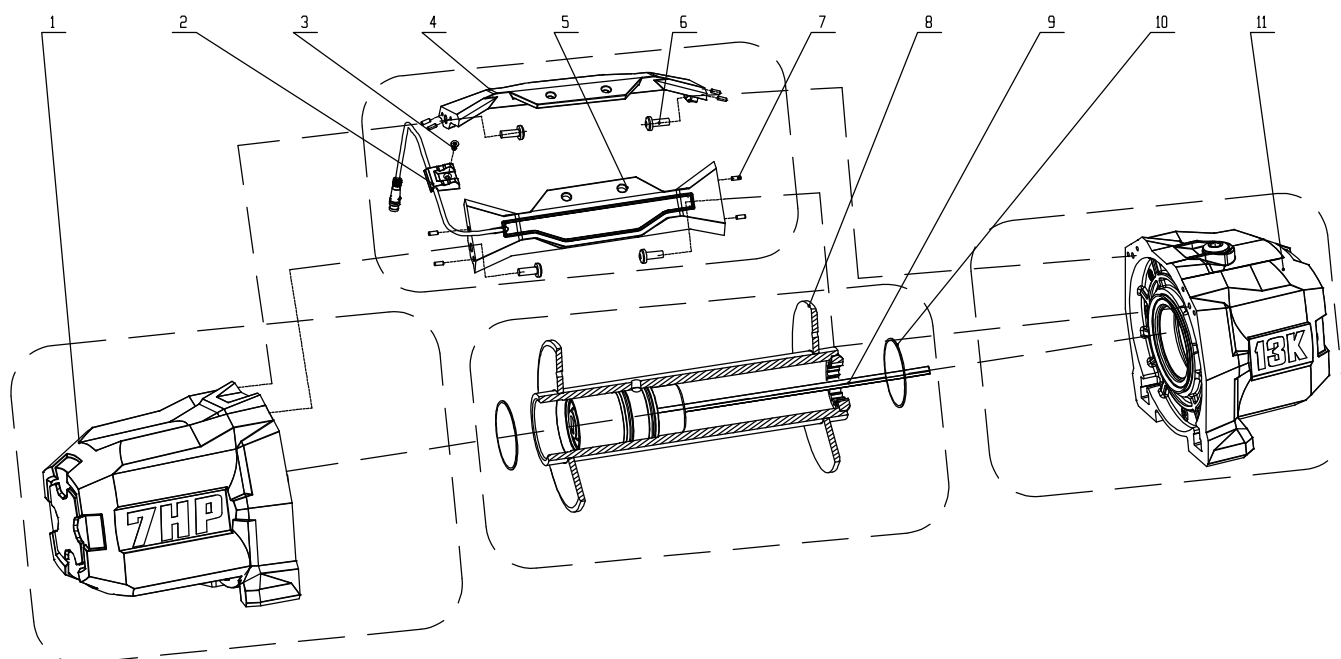
	10000 SPECIFICATIONS	13000 SPECIFICATIONS
Single Rated Line Pull	10000 lbs (4536 kgs)	13,000 lbs (5897 kgs)
Motor	7HP Series Wound	7HP Series Wound
Cont roller	12-foot Remote /Wired Switch	12-foot Remote /Wired Switch
Gear Train	3-Stage Planetary	3-Stage Planetary
Gear Reduction Ratio	193	193
Clutch	Sliding Ring Gear	Sliding Ring Gear
Braking	Automatic in-The-Drum	Automatic in-The-Drum
Drum Size	Dia. 2.5" (63.5mm) x Length 9.6" (224mm)	Dia. 2.5" (63.5mm) x Length 9.6" (224mm)
Synthetic Rope (COMP Series)	7/16" x 92'(11mmx28m)	1/2" x 92'(12.5mmx28m)
Fairlead (COMP Series)	Aluminum Hawse Fairlead	Aluminum Hawse Fairlead
Remote Control	Included	Included
Battery	Recommended 650 CCA	Recommended 650 CCA
Battery Leads	25m ² 72" L (1.83m)	25m ² 72" L (1.83m)
Net Weight	27.00kgs	29.50kgs
Overall Dimensions (L x W x H)	20.9" x 6.9" x 7" (532x176x178mm)	20.9" x 6.9" x 7" (532x176x178mm)
Mounting Bolt Pattern	10" x 4.5" (254 x 114.3mm)	10" x 4.5" (254 x 114.3mm)

TMAX -6 10000								
Line Speed & Amp Draw - First Layer								
Line	lbs.		No	2000	4000	6000	8000	10000
Pull	kgs		Load	907	1814	2721	3628	4536
Line Speed	fpm	12V	32.34	19.68	14.76	10.82	9.35	7.22
	mpm	12V	9.86	6	4.5	3.3	2.85	2.2
Motor	amps	12V	85	150	214	278	340	405

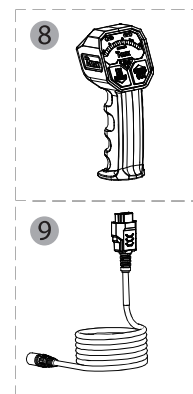
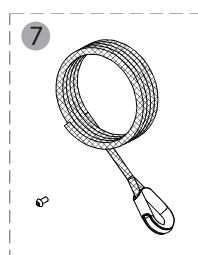
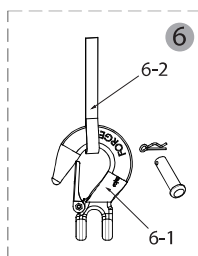
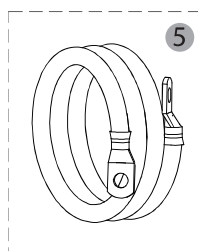
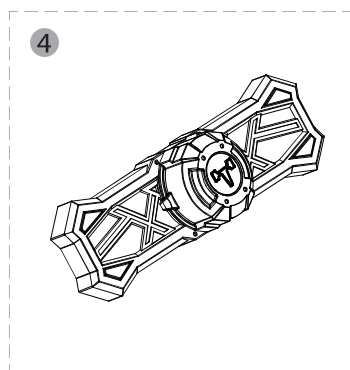
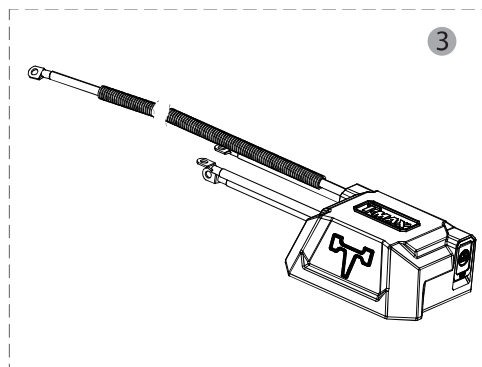
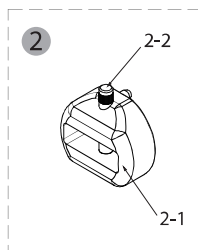
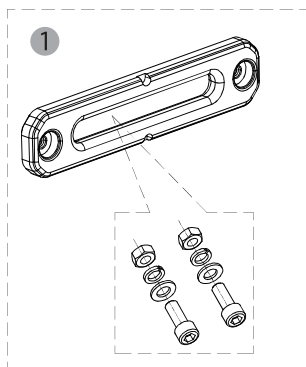
TMAX-6 13000										
Line Speed & Amp Draw - First Layer										
Line	lbs.		No	2000	4000	6000	8000	10000	12000	13000
Pull	kgs		Load	907	1814	2721	3628	4536	5443	5897
Line	fpm	12V	31.30	15.74	13.12	9.84	8.53	6.89	5.74	5.25
Speed	mpm	12V	9.54	4.8	4	3	2.6	2.1	1.75	1.6
Motor	amps	12V	70	122	174	226	280	332	384	405



S/N	PART NO.	NAME	QUANTITY
1-1.	7347106.1	Motor Assy 13000LB	1PC
1-2.	7333106.1	Motor Ass 10000LB	1PC
2.	7347106.0-5	Crimping Snap	1PC
3.	GB/T 70.3-2008	M3*8 hexagon socket bolt	1PC
4.	7347106.0-2	Rear Tie Rod	1PC
5.	7347106.0.1	Tie Rod winch load indicator Assy	1PC
6.	GB/T 2672	M6*18 Hexagon socket bolt	4PCS
7.	GB/T 119.1-2000	Dia4*8 Pin	8PCS
8.	7329100.2	Drum Assy	1PC
9.	7347106.4	Brake Assy	1PC
10.	GB/T 3452.1	O sealing Ring 54.5 x 2.65.	2PCS
11-1.	7347106.3	Gear Box Assy 13000LB	1PC
11-2.	7333106.3	Gear Box Assy 10000LB	1PC



S/N	PART NO.	NAME	QUANTITY
1.	7347106.7.2-4	Fairlead	1PC
2-1.	7329103CC.7-2(P01)	Rope stopper	1PC
2-2.	7329103CC.7.1-1(P01)	Pin for rope stopper	1PC
3.	7347106.6.1(TMAX)	Control box Assy	1PC
4.	7347106.7.2(TMAX)	Fairlead Cover	1PC
5.	7329103S.6.1-16	Long black cable	1PC
6-1.	7329100.0-4	Clevis hook	1PC
6-2.	7329100.0-25	Hook Tag	1PC
7-1.	9111282	Synthetic Rope 10000LB	1PC
7-2.	9112282	Synthetic Rope 13000LB	1PC
8.	7347106.6.2(TMAX)	Remote Controller	1PC
9.	7347106.6.3	Remote cable	1PC



SYMPTOM	POSSIBLE CAUSE	SUGGESTED REMEDY
Motor does not turn on	Safety switch is off	Turn safety switch to ON position
	Switch assembly not connected properly	Insert switch assembly firmly to the connector
	Loose battery cable	Tighten nuts on cable connectors
	Solenoid malfunctioning	Tap solenoid to free contact, applying 12 volts to coil terminal directly. The solenoid will make an audible clicking sound when activating.
	Defective switch assembly	Replace switch assembly
	Defective motor	Check for voltage at armature port with switch pressed. If voltage is present, replace motor.
	Water has entered motor	Check for voltage at armature port with switch pressed. If voltage is present, replace motor.
Motor runs hot	Long period of operation	Let winch cool down periodically.
Motor runs slowly or without normal power	Low battery	Recharge battery by running vehicle
	Insufficient current or voltage	Clean, tighten or replace the connector.
Motor runs but cable drum does not turn	Clutch not engaged	Turn clutch into IN position, if that does not work, ask a qualified technician to check and repair.
Motor runs in one direction only	Defective or stuck solenoid	Tap solenoid to free contacts. Repair or replace solenoid.



THINK MAX, TERRAIN MAX

T MAX (HANGZHOU) TECHNOLOGY CO.,LTD

Address:NO.5,Road 5,Dongzhou industrial Area Fuyang City, Hangzhou, China,311401

Tel:86-571-87191166 87191006

Fax:86-571-87191088 87191087

[Http://www.tmax.biz](http://www.tmax.biz)

E-mail:tmax@tmaxtools.com

M922403A

COPYRIGHT T MAX (HANGZHOU) TECHNOLOGY CO., LTD ALL RIGHTS RESERVED