



USER INSTRUCTION

RGBIC NEON LED STRIP



Product Parameters:

App Name: Smartlife

WIFI: 2.4GHz-WIFI

Colors: Full Color RGB, Dreamcolor Changing

LED quantity: 84 LEDs/M

Working temperature: -20°C ~ 60°C

Support: iOS 10.0/Android 4.4

Neon Strip Size: 5*11mm

Beam Angle: 180 degrees

FCC warning:

Any Changes or modifications not expressly approved by the party responsible for compliance could void the user's authority to operate the equipment.

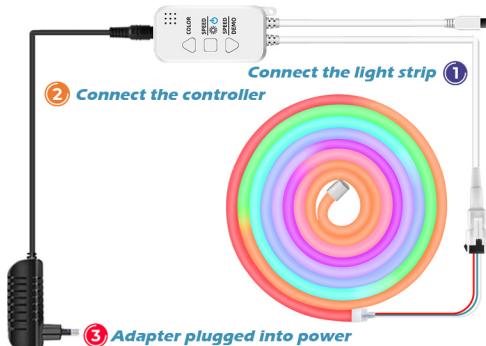
This device complies with part 15 of the FCC Rules. Operation is subject to the following two conditions: (1) This device may not cause harmful interference, and (2) this device must accept any interference received, including interference that may cause undesired operation.

Note: This equipment has been tested and found to comply with the limits for a Class B digital device, pursuant to part 15 of the FCC Rules. These limits are designed to provide reasonable protection against harmful interference in a residential installation. This equipment generates uses and can radiate radio frequency energy and, if not installed and used in accordance with the instructions, may cause harmful interference to radio communications. However, there is no guarantee that interference will not occur in a particular installation. If this equipment does cause harmful interference to radio or television reception, which can be determined by turning the equipment off and on, the user is encouraged to try to correct the interference by one or more of the following measures:

- Reorient or relocate the receiving antenna.
- Increase the separation between the equipment and receiver.
- Connect the equipment into an outlet on a circuit different from that to which the receiver is connected.
- Consult the dealer or an experienced radio/TV technician for help.

This equipment complies with FCC radiation exposure limits set forth for an uncontrolled environment. This equipment should be installed and operated with minimum distance 20cm between the radiator & your body.

How to connect



Do not connect the light strip with power on



How to connect to the app

1. Search "TUYA" or "Smart Life" in the App Store or Google Play to find the app, or scan the QR code to download and install.



2. Please connect the light strip, controller and power adapter.

3. Open your phone, connect to WIFI, turn on Bluetooth and GPS.



4. Press and hold the button on the controller for 5 seconds, the light strip will display red light and flash.

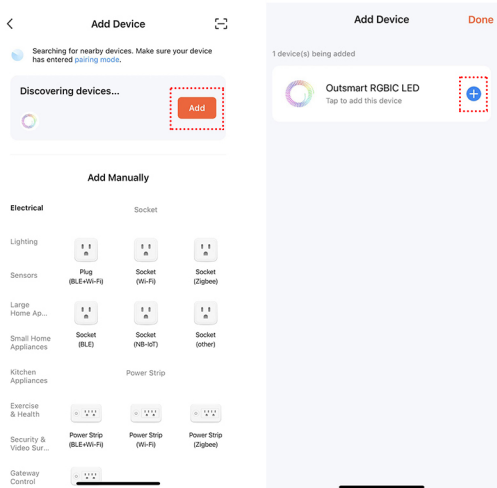


5. Open the APP and Click "add device" or the "+" in the upper right corner

Add Device



7. Click the "Add" icon and then click the "+" icon



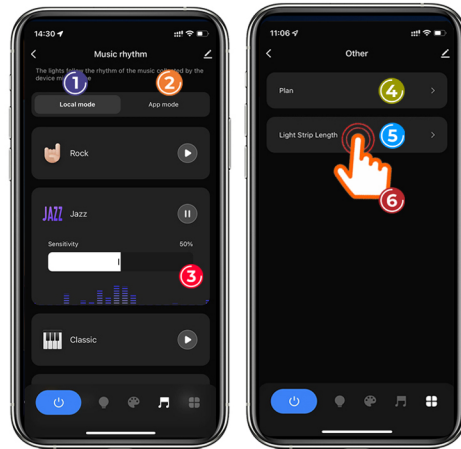
If the Add icon does not appear, please click Lighting→Strip Lights(WiFi)
→Enter the WIFI password→Next→Select the status of the omdocayor
light or hear the beep→Blink Quickly→Done

APP interface



- 1.Static color
- 2.Segment color
- 3.Remove color
- 4.Gradient color
- 5.Color Picker
- 6.Segmented light strip selector

- 7.Dynamic mode selector
- 8.Custom dynamic mode



- 1.Built-in MIC music mode
- 2.Phone MIC music mode
- 3.MIC sensitivity
- 4.Timing mode
- 5.Light strip length

6. Please set the "light strip length" according to the package specification
(1m) set:Please set to 1.4m
(2m) set:Please set to 2.8m
(3m) set:Please set to 4.2
(5m) set:Please set to 7m
(10m) set:Please set to 9m

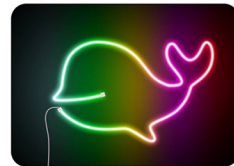


1.Prepare screws and fixing buckles.

2.And use a screw-driver to drive in the screw to fix it.



3.The strip body is completely embedded in the fixing buckle to complete the installation.



4.Connect the controller, plug in the power supply, and light up the light strip.



The PCB board in the casing is side-mounted and can only be bent from the side.



Please do not twist the light bar to avoid damage to the light strip.