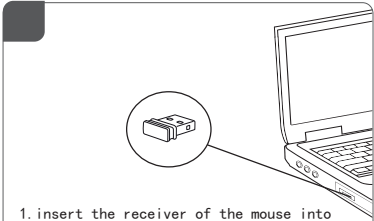


Molded Wireless PC Car Mouse



1.insert the receiver of the mouse into the USB port of the computer,wait for a few seconds, the computer will automatically recoanize the mouse  
2.Now the mouse is ready to use.

- a) Left key, right key, middle key, forward and back 5 keys;  
b) 360 degrees free space within 8M working distance;  
c) High sensitivity, update speed of 125 frames per second;  
d) The application of frequency hopping technology, strong anti-interference ability, can adapt to 2.4G multi-interference environment;  
e) Application of high-performance photoelectric SENSOR, resolution 1000/1200/1600DPI;  
f) Low power consumption  
1. Working current < 15mA;  
2. Power saving mode: current < 15uA, can only be pressed to wake up;  
g) Power saving function:  
1. After 10 minutes of no action, the mouse enters the power saving mode;

Frequently asked questions

- Features: For Home and office use
- Size: 103\*55\*35.5 MM
- DPI: 1000
- Weight: 51g±5g
- Button of Mouse:3D
- DC 1.5V by "AAA\*2" battery
- Type: 2.4GHz Wireless Mouse
- Transmission Distance: 8-10m
- Lifespan of Key-stroke: >3 million times
- Application: Desktop,laptop
- System: Windows XP、 Windows 2000 windows Vista 7/8/10



FCC Warning

This device complies with part 15 of the FCC Rules. Operation is subject to the following two conditions: (1) This device may not cause harmful interference, and (2) this device must accept any interference received, including interference that may cause undesired operation.

Any Changes or modifications not expressly approved by the party responsible for compliance could void the user's authority to operate the equipment.

Note: This equipment has been tested and found to comply with the limits for a Class B digital device, pursuant to part 15 of the FCC Rules. These limits are designed to provide reasonable protection against harmful interference in a residential installation. This equipment generates uses and can radiate radio frequency energy and, if not installed and used in accordance with the instructions, may cause harmful interference to radio communications. However, there is no guarantee that interference will not occur in a particular installation. If this equipment does cause harmful interference to radio or television reception, which can be determined by turning the equipment off and on, the user is encouraged to try to correct the interference by one or more of the following measures: -Reorient or relocate the receiving antenna. -Increase the separation between the equipment and receiver. -Connect the equipment into an outlet on a circuit different from that to which the receiver is connected. -Consult the dealer or an experienced radio/TV technician for help.

The device has been evaluated to meet general RF exposure requirement. The device can be used in portable exposure condition without restriction.