

FCC Caution:

This device complies with part 15 of the FCC Rules. Operation is subject to the following two conditions: (1) This device may not cause harmful interference, and (2) this device must accept any interference received, including interference that may cause undesired operation.

Any changes or modifications not expressly approved by the party responsible for compliance could void the user's authority to operate the equipment.

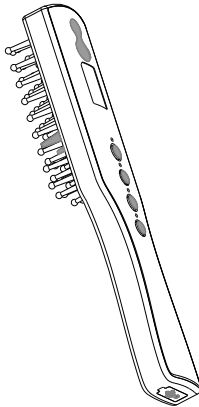
NOTE: This equipment has been tested and found to comply with the limits for a Class B digital device, pursuant to Part 15 of the FCC Rules. These limits are designed to provide reasonable protection against harmful interference in a residential installation. This equipment generates, uses and can radiate radio frequency energy and, if not installed and used in accordance with the instructions, may cause harmful interference to radio communications. However, there is no guarantee that interference will not occur in a particular installation.

If this equipment does cause harmful interference to radio or television reception, which can be determined by turning the equipment off and on, the user is encouraged to try to correct the interference by one or more of the following measures:

- Reorient or relocate the receiving antenna.
- Increase the separation between the equipment and receiver.
- Connect the equipment into an outlet on a circuit different from that to which the receiver is connected.
- Consult the dealer or an experienced radio/TV technician for help.

The device has been evaluated to meet general RF exposure requirement. The device can be used in portable exposure condition without restriction.

Product Manual

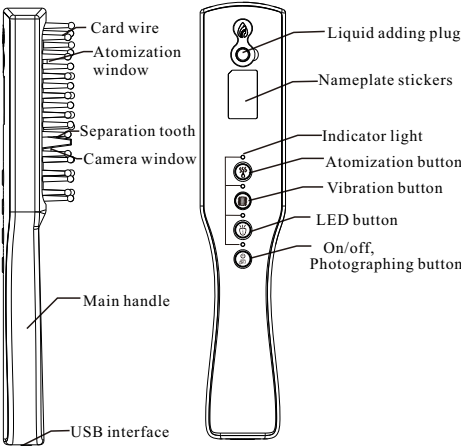


Please read the manual before use and keep it well for future reference.

Product Characteristics

Thank you for your choice of our intelligent visual comb. The product is a national patent product with its own property right and can be connected to the phone, computer and other display terminal equipment for monitoring, and also can provide timely visual repair and protection for hair and scalp.

The combing is a necessary for us to do every day, not only protecting our health and also being beneficial to our body. It can improve our sleeping quality, extend the aging of our body, and prevent cerebrovascular diseases and provide nutrient for hair. It also can nourish our mind and body and alleviate our fatigue.



Button definitions

Button icon	Function definition
	Atomizing function with two modes
	Massage function with three modes
	LED brightness adjustment, three speed cycle
	Long press the switch and click the photo function

Operating instructions

This product supports all Apple, Android, Huawei mobile phone. The users should follow the instructions to download and install APP.

There are three working modes, of which camera mode is a 1 million HD camera that could observe hair and scalp clearly; of which the atomizing mode can provide humidification maintenance for the surface, of which vibration mode can massage for health care

Startup: Long press the "on/off, camera button" for 3 seconds, and then the product will start after the indicator lights

Camera mode: Connect to the product according to the download and installation instructions for real-time observation. Click the button of "on/off button" to take photos. The photos taken can be saved to the mobile phone album. The mobile phone APP can be used to take photos, video, zoom in, zoom out, set, browse playback and other functions.

Lighting mode: Press the "LED light button" to adjust the camera light source, including the third gear, low light, medium light, high light and cycle adjustment

Atomization mode: First, open the filling plug, and 3mL of pure water (this product can only be filled with pure water and pure milk or dilute liquid with 1:100 concentration) can be added at a time. Upon completion, cover and fill the filling plug, press the "atomization button" for the first time to atomize the window with continuous spray, and the indicator light will be on. Press the secondary atomization window for 2 seconds of intermittent spray and 1 second of stop, then the indicator light on. Press the third atomization stop, then the indicator light is not bright. After five minutes, it will automatically stop, then the indicator light is not bright.

Vibration mode: With the first press of the "vibration button" for continuous vibration, the indicator lights up. With the second press of the "vibration button" for intermittent vibration, the indicator lights up. With the third press of "the vibration button" for the cycle of vibration from the low to the high. With the fourth press of the "vibration button" for the stop of vibration, the indicator does not light.

Notes: This product waterproof grade IP 54, and cannot be soaked in water for cleaning and use

Program download and installation

WIFI connection and use instruction:

1. Scan the QR code on your Android phone's browser On the right side, click on "Search" and then click on "Android (CH), or Android (Google)" as the Prompt, a save file window will pop up. Click and download to install.
2. The user should use WeChat to scan the QR code on the right side, click "Open in Browser" at the upper right corner to select "Download and Install Directly", click "Continue Downloading" as prompted, click "Continue Installing" as prompted, and wait for the completed installation of APP (UseEndscope).
3. Use Apple's WeChat to scan the QR code on the right, click "Open in Safari" in the upper right corner, select "IOS App Store", follow the prompts, click "Get", enter the ID and password prompts, and wait for the installation to complete.
4. After installing Android and Apple phones, first turn on the visual comb, press and hold the power on button and the indicator light (blue light) will light up. Then, open the phone settings uniformly, click "WLAN", turn on "WLAN", refresh and find the "FJ-WIFI - *****" hotspot, click on the "FJ-WIFI - *****" network connection, and exit the settings menu after the connection is completed.
5. When clicking on the App UseEndscope on Android or Apple phones, the WIFI icon displays "Connected", and the "Start" icon below will light up. Then, click on "Start" to directly see the image display.



(APP download)

Product parameters

Product model: AC107W
Lens pixels: 1280*720pixels
Light source: 8/LED lights
Network standard: IEEE802.11b/g/n
Antenna: Built-in antenna
Operating frequency: 2.4Ghz
Image transmission rate: 30fps
Atomization window capacity: 3ml
Battery capacity: 1200mAh
Battery life :4 hours
Input voltage: DC 5V 1A
Executive standard: GB4706.15-1996

Accessories (included in the operation manual packaging):
Visual Comb, charging cable, pipette, manual, Certificate of Conformity

Fault analysis and troubleshooting

Failure	Solutions
No response for start-up	1. Please follow the correct way to try several times. 2. Please use qualified charger to charge for one hour.
No fog in atomization	1. Please add appropriate amount of liquid (mineral water, milk). 2. Please keep the liquid silo clean and not blocked
No vibration for massage	1. Please continue to use after full charge
No image on the phone	Please follow the correct startup method and connection in the instruction for a new connection to the phone

Warranty

Within 1 year from the date of purchase of this product, our company will provide free maintenance or replacement of any parts if the fault caused by raw materials or process defects is confirmed after inspection. Consumers who need repair services must provide purchase invoices or purchase vouchers. This warranty clause does not apply to the following situations: Warranty registration is not a requirement for obtaining a warranty due to abnormal or incorrect use, abnormal conditions, improper storage, unauthorized disassembly, alteration, or installation of the product. When the warranty occurs, if the consumer cannot provide the purchase voucher and after-sales service certificate, our company will make a judgment according to the product delivery date.