

# S60

Faumon Dash Cam Built-in WiFi  
Wifi & APP Control

## USER MANUAL



**SD card has been inserted into the dash cam**

**Need to plug in the cigarette lighter to have GPS  
function(The car needs a cigarette lighter interface)**

# PACKAGE CONTENTS



S60 Dash Cam



2.29FT Type-C Data Cable  
(ONLY Connect S60 dash cam  
and your PC to playback video)



11.48FT Type-C Car  
Charger Cable



19.68 FT Rear Camera



USB Car Charger



Suction Mount with  
GpS Function



8X Screws  
2X 3M adhesive  
sheet stickers



Card Needle  
(Poke the reset hole to reset  
the dash cam when the  
dash cam can not work)



S60 USE MANUAL



10X Cable Hiding Clip



SD Card Reader  
(For playback videos on PC)



Car Wire Trim Tool  
(Help hidden cables)  
Lens Wiping Cloth



64GB SD Card  
(Have inserted into the  
"TF" port of camera)

# ISSUES

## ? STOP

⚠ NOT HAPPY SHOPPING EXPERIENCE

⚠ Inaccurate website description

⚠ Missing parts or accessories

⚠ Wrong item was sent

⚠ Damaged or defective item

## 🎧 ANY QUESTIONS WHAT SO EVER?

✅ Please contact us before returning the item.

✅ We will do our best to help you and give you 100% Satisfaction Guaranteed.

✅ “[faumon\\_service@163.com](mailto:faumon_service@163.com) ” LIVE CUSTOMER SERVICE

✅ Customer service is open for business 24/7.



# TABLE OF CONTENTS

Installation Map ————— 01

Important Notice Before Using ————— 01

Product Structure ————— 03

How to Use the Button ————— 05

Icon Instruction ————— 06

How to Connect with WiFi ————— 07

HIT GPS Player App ————— 11

Installation Guidance (details) ————— 12

Menu Setting ————— 18

How to Playback the Recording Video ————— 24

Questions & Answer ————— 26

Product Specification ————— 30

## - Installation Map -



## - Important Notice on Using -

1 Any using question or not satisfied, please feel freely contact with our seller before return it: We will provide you the best After-sale Service: [faumon\\_service@163.com](mailto:faumon_service@163.com).

2 Please do test both cam before installation. (use our cigarette lighter to charge it). If there is no problem before installation, but there is a problem after installation, you can check the installation line and reinstall.

- 3 The “Parking Mode” function need use the hardwire kit to charge the S60 dash cam. Please contact us to get the hardwie kit for free.
- 4 Our dash cam comes with 64G SD card (**already inserted in dash cam**), if you want to change it, please use High Speed, Class 10 32G - 128G SD card. Please format the sd card before first time’s using.
- 5 The built-in battery is only to save the time settings. Operation of the S60 dash cam requires external power support.
- 6 If FREEZING or KEEP POWER ON & OFF issues, please use the card needle to insert the R little hole (at the bottom of the dash cam).
- 7 When the dash cam connected to WiFi, can ‘t operate the dash cam, only can start/pause the recording on the mobile phone, or Playback/Delete the recorded files on the mobile phone.
- 8 If you accidentally break the car charger, bracket, SD card or other accessories during use, please contact us. We would like to send you a replacement.
- 9 When you touch the dash camera screen is very hot, this is normal. As we use a high-end glass screen to make camera more clearer.

10 The effective distance of WiFi is only 3-8 meters, beyond this distance, WiFi cannot be connected. If you can't connect to wifi, please try the following methods:

A.Forget the Wi-Fi network, restart the machine and mobile phone, and reconnect.

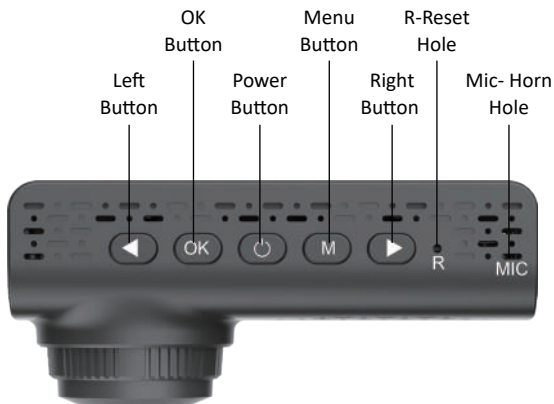
B.Turn off mobile security software and VPN.

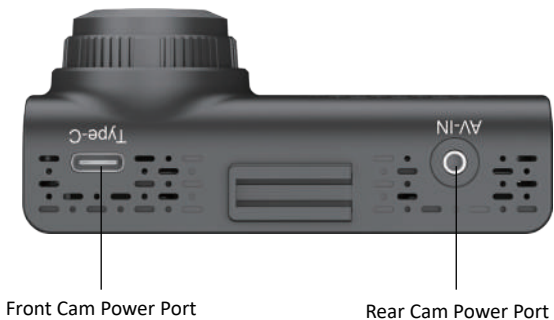
C.Turn off the 4G/5G data traffic of the mobile phone.

D.The closer the camera and the mobile phone are the better.

11 If you open the dash cam wifi, you don't use the app “ELook”, please turn off the dash cam wifi linked to your phone, otherwise you can not use your own network.

## - Product Structure -







## - How to Use the Button -

### Left Button

Long press to turn on/off the dash cam microphone  
Short press to switch the screen display mode of front & rear cam  
Short press to switch your choice when at menu setting

### OK Button

At recording mode:  
Long press to take the photo  
Short press to start/ pause recording  
At menu setting:  
Short press to enter/ confirm your choice  
At playback mode:  
Short press to start/ pause playback recording

### Power Button

Long press to turn on/off the camera.  
Shot press to turn on/off the screen but still recording

### Menu Button

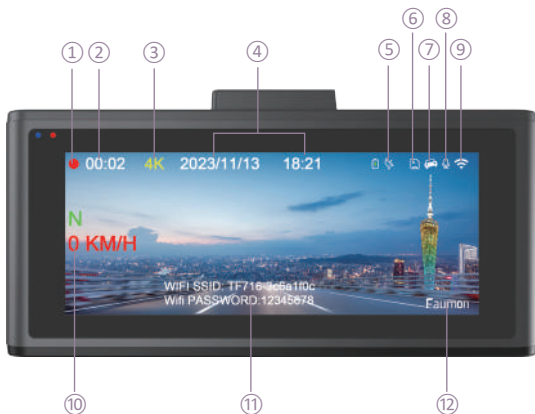
Short press to enter the menu setting  
Long press to enter/ exit the playback mode

### Right Button

Long press to turn on/off the wifi  
Short press to switch your choice when at menu setting  
Short press to take the photo when at recording mode

## - Icon Instruction -

(when some function was turn off , the icon will not display on screen)



① Recording Indicator

② Video Time

③ Resolution

④ Date/Time

⑤ GPS

⑥ SD Card

⑦ G-Sensor

⑧ Microphone

⑨ WiFi

⑩ GPS

⑪ WiFi Account & Password

⑫ Dash Cam Brand

# - How to Connect with WiFi -

## 1 Download the APP:

- Long press “ Right Button” to turn on the Wifi
- Press “M Button” to choose the “Wifi Info”
- Then you can see as below picture, scan code and download the APP “Elook”



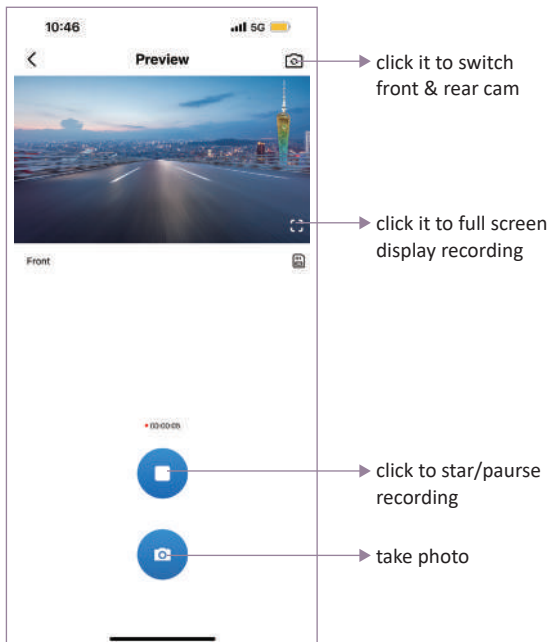
wifi account & wifi password

## 2 Use your phone to link the dash cam's WiFi:

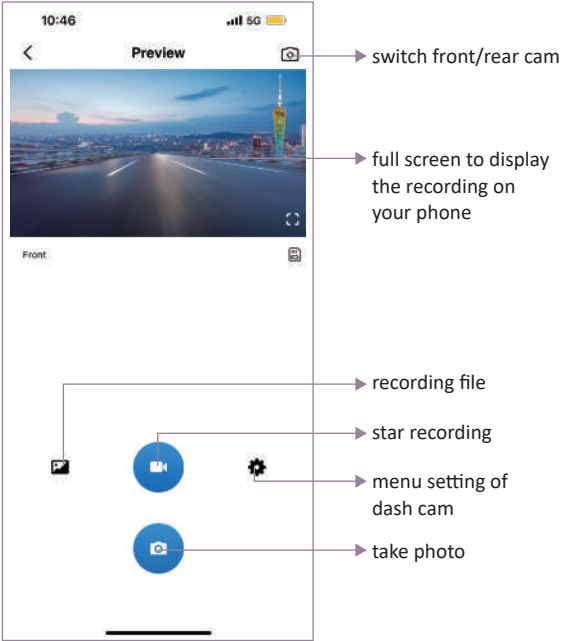
- Open your “ WLAN”
- Found the wifi account like “TF716-\*\*\*\*\*” & connect it
- WiFi Password: 12345678

### 3 Open the APP “look”

- Click “Connect Devices”:



• When stop recording:



## • Playback on your phone:

Click the video (image 1) directly then can enter the playback mode(image 2)

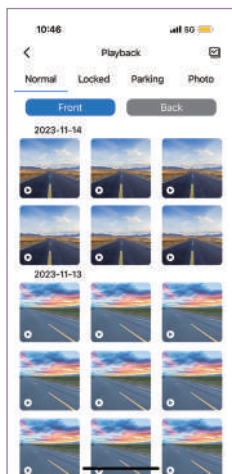


image 1

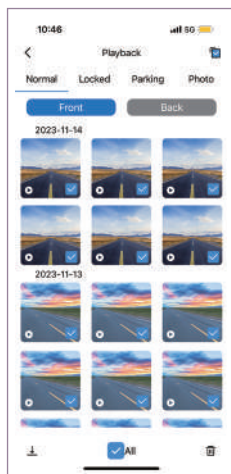


image 2

**Download** : you can choose to download the recording file on your phone directly . After download the file, you can choose **ONE-KEY Share it with Your Friends.**

**Delete:** choose and delete the recording file.

# - HIT GPS Player App -

Download our **HIT GPS Player** from website :

Windows: <https://pcgps.ce2ce.com/hit/hitplayer.html>

ios: <https://apps.apple.com/us/app/hit-gps-player/id1527858255>

When you download the HIT GPS Player, then you can transfer your dash cam to computer.



Then drag and drop the video into this HIT GPS Player black area, it will then automatically play the video and the exact location will be displayed on the right hand side

## - Installation Guidance (details) -

Before installation , Please test and confirm both cam can be used well. ( please use our cigarette lighter charger to charge) Any question please mail with us : [faumon\\_service@163.com](mailto:faumon_service@163.com)

(If there is a problem with the dash cam before installation, you can contact with us to deal with it in time without wasting installation time. If there is a problem after installation, it can also be ruled out that it is not a machine problem but an installation problem.)

### - Install Front Cam -





Connect the car charger to the camera and the cigarette lighter, hide the rest of the cable in the gap of the Interior trim board.

( If you want to use the rear cam , please plug the AV-IN port rear cable before turn on the dash cam )

The camera will auto-start recording once powered on.

## ◆ Insert the Memory Card

Gently push the memory card in until you hear a click, and allow the spring release to push the card in/out.



Please insert the card in the right direction.



Please format the SD Card at first time using.



( please confirm the direction of SD Card firstly )

## ◆ Mount the Front Cam onto the Windshield

### ① Clean the front windshield



## ② Install the suction cup



## ③ Adjust the angle of item

You can rotate the camera 360° to record to record the your preferred direction.



Loosen the screw, adjust the main camera's angle and then tighten it to lock at the desired angle.

## ④ Install the suction cup on the windshield and lock it



## ⑤ Connect the power

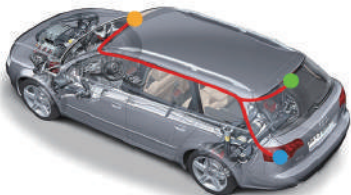


### - Install Rear Cam -

There are two ways to place the camera. (If don't have rear camera, please ignore)

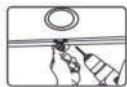
**Way 1:** Mount on the rear windshield. There is a 3M glue in the pack age for the rear camera . Please clean the rear windshield and find a suitable position, then paste the rear camera on the windshield.

**Way 2:** (Recommended!) Install it near the license plate. There are fixing screws inside the package to help you fix it



## Detail on Rear Cam Installation

① Select a flat and central place that near the number plate lamp at the rear of the vehicle.



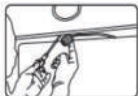
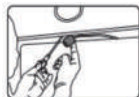
② Attach tape to the bracket of the camera to hold the camera in position while installing, and drill two small holes, one for the first screw, the second to run the reverse camera.

③ Use a screwdriver to fix the first screw leaving the screw loose enough to adjust the camera.

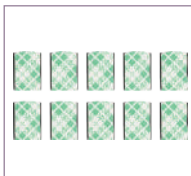


④ Insert the camera wire through the intended drilled hole, checking the installation position.

⑤ Mark the place that suitable for the second screw and drill a small hole for it.



⑥ Fix the second screw and securely tighten both screws.



Need using these accessories during installing the rear cam

⑦ After the installation is completed, connect the rear plug to the rear camera interface of the recorder.



Then start the car engine to turn on the dash cam front and rear.  
(if turn on front cam firstly then connect rear cam to dash cam , maybe will lead to short circuit black screen - reboot dash cam maybe can fix this problem)

## - Menu Setting -



Press once "Menu Button" to enter this interface

Press UP/Down Button to switch other more options

Press OK to enter/confirm the options

(Another function of "Menu Button " - - return to the previous step)

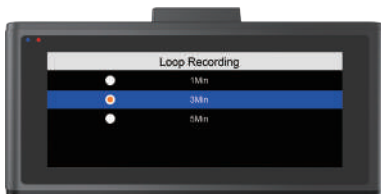
### [ Resolution ]

Choose "Resolution", press "OK" button enter below picture:



### [ Loop Recording ]

Choose “Loop Recording”, press “OK” button enter below picture:



When you turn on the function, the oldest videos will be overwritten. But the “locked” videos cannot be overwritten.

### [ Exposure ]

Choose the “Exposure”, press “OK” button enter > 1/2/3/-1/-2/-3, The higher the number, the higher the exposure.

### [ G-Sensor ]

Choose the “G-Sensor”, press “OK” button enter > Off/Low/Medium/High.

We suggest that choose the “low”.

If the G-Sensor is activated, when over limitation braking/shocking/vibration occurring during recording, the existing recording video file will be automatically locked.

### [ Gps Switch ]

Choose the “Gps Switch”, press “OK” button enter > off/on

**Note: You need to plug in the GPS car charger we provided to monitor**

## [ Speed Units ]

Choose “Speed units”, press “OK” button enter > KMH/MPH.

Kilometer per hour (KMH) and miles per hour (MPH) are available for speed unit.

## [ Speed Compensation ]

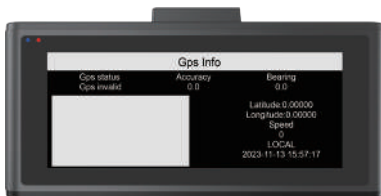
Choose the “Speed Compensation”, press “OK” button enter > 1/2/3/4/5/-1/-2/-3/-4/-5

Normally there is no need to adjust. If the actual GPS positioning is inaccurate, you can adjust it manually.

## [ GPS Info ]

This feature allow you to see your current geographical location in Latitude & Longitude as below picture. If disabled, your camera will no longer measure your speed and position; nor synchronize the time / date. (Only available when connect with GPS signal)

Please use “HIT GPS Player” app to playback videos and to visualize your position and speed on your computer. details please see [page \\*11](#)





Short press :“M Button”to enter to screensaver as below picture:



### [ Screen Saver ]

Choose “Screen Saver”, press “OK” button enter >Off/10s/30s/1Min.

You can set it by adjusting different time intervals on menu. The screen is black, but the dash cam is still recording.

### [ Microphone ]

Choose the “Microphone”, press “OK”button enter > off/on

You can set it to On or Off accordingly. If set to Off, the camera will not record the sound.

### [ Language ]

Choose“Language”, press“OK”button

enter >English/Franch/German/Spanish/Chinese/Japanese etc.

### [ Time Setting ]

Choose “Time Setting”, press “OK” button enter > Update the date & time

### **[ Time Format ]**

Choose “Time Format”, press “OK” button enter >24-Hours/12-Hours

### **[ Date Format ]**

Choose “Date Format”, press “OK” button enter >YY/MM/DD,  
MM/DD/YY, DD/MM/YY

### **[ Frequency ]**

Choose “Frequency”, press “OK” button enter >Auto/50HZ/60HZ

### **[ Brightness ]**

Choose “Brightness”, press “OK” button enter >Low/Middle/High

### **[ Key Sound ]**

Choose the “Key Sound”, press “OK”button enter > off/on

### **[ Boot Sound ]**

Choose the “Boot Sound”, press “OK”button enter > off/on

### **[ Wifi Switch ]**

Choose the “Wifi Switch”, press “OK”button enter > off/on

## [ Wifi Info ]

Choose the “Wifi Info”, press “OK” button enter



## [ Format SD ]

Choose “Format SD”, press “OK” button enter > Clear SD card data  
In order to a Clean, Smooth, Comfortable using experience, we suggest you format your SD card once a month

## [ Reset Factory ]

Choose “Reset Factory”, press “OK” button enter >Reset factory at once

## [ Version ]

Choose “Version”, press “OK” button enter >Software Version

# - How to Playback the Recording Video -

## Way 1 to Playback on PC

On the computer, navigate to device drive.  
"Video/F" is front camera videos, "Video/R"  
is rear cam videos.  
Select the video to playback.



## Way 2 to Playback on PC

- To playback a video with USB cable, connect the USB Cable to the device and the computer. After the device powers up, press the OK Button to select "Mass storage mode".



Mass storage mode

## Way 3 to Playback on Dash Cam

Long press “M Button” to enter the playback mode.

When at playback mode, short press “M Button” to switch the file of Normal/Photo/Locked/Parking.

Press “OK Button” to playback & **Press “M Button” to return previous step.**



## Way 4 to Playback on Phone

Connect dash cam wifi , then playback the video on your phone, details please see [page \\*10 - How to Connect Wi-Fi](#)



## - Questions & Answer -

### **1 Q: The camera can not record video or take photos?**

A: Be sure you are using suitable SD card: Speed over Class 10.

Format your new SD card on the dash cam when first use!

### **2 Q: Camera power off after a few seconds.**

A: Make sure to keep the camera plugged into power for daily use because the internal battery is designed to save your personal settings. If the dash cam still powers off after connecting to a usable power cord, please contact us for help.

### **3 Q: The camera automatically stop recording?**

A: Format the SD card.

The G-sensor might be triggered too often and locks too many video files, try lower sensitivity.

### **4 Q: The camera can not turn on?**

A: This camera features a built-in battery as internal power, it's used only for saving the videos file after external power supply cuts off (car turn off). This camera will not turn on without external power supply.

Check the power supply, make sure they are connected properly, power indicator on the power adapter is on, and the connectors are tight.

## **5 Q: Suction mount cannot attach on windshield well?**

A: Please clean the windshield with a glass cleaning wipe. Removed the protective film.

Please soak suction mount to warm water for a moment. If it is still not working, please contact seller after-sale service to get a replacement.

## **6 Q: The rear cam cannot display?**

A: (1). Please switch the camera display mode to double check the rear camera status.

(2). Please check whether the TYPE-C plug is in place and the cable is connected correctly.

(3).Try to disconnect the camera and clean the connector with some Medical alcohol and connect it again.

## **7 Q: The camera crashes or not responding to operations?**

A: Use a pin or and unfolded paper clip, press the RESET button to restart the camera.

## **8 Q: I can't delete files on my SD card within the dash cam.**

A: Check if these files are "locked". If so, please delete the files by manually.(Delete on PC or Format the files on dash your dash cam. Or you can unlock the files. Select locked files,press menu button,then press OK button, and then select unlock current or unlock all. It is optional!)

## **9 Q: Cannot see the reversing guide image when reversing.**

A: Please check the wiring and make sure the RED LINE of rear camera is correctly linked to the POSITIVE ELECTRODE of the reserve light.

## **10 Q: Can not move the SD card.**

A: With the card previously installed, you now need to push the card further inwards slightly, using your finger nail,until you hear and feel a small latch. Use the edge of a small coin if you have difficulty. Release pressure and the card will spring out sufficiently for you to take hold of it.

## **11 Q: The camera gets HOT?**

A: It is normal for your camera to run slightly hot. Due to it is recording video at high speed, the dash cam maybe hot during using. (no more than 170°F/75°C)



## **12 Q: Making Annoying sound?**

A: Because the radio will transmitting frequency, the radio is magnetic, it will be interference for electronic products. If the two products are too close, they will interfere with each other. You can move the driving recorder to a position slightly away from the radio. Then it will not interfere each other and won't make a buzz buzz sound.

Low battery will also lead to buzzing sound. Please keep charge the dash cam for a while.

## **13 Q: Dash Camera Freezing/Lagging or Crashing?**

A: Use a pin or unfolded paper clip, press the RES Button to restart the camera. Now the dash cam should turn ON.

If it still doesn't turn ON, then please CONTACT US.

## **14 Q: Color of the video or photo is not good?**

A: Verify that Frequency option is set to 60Hz (North America) or set accordingly.

## **15 Q: Rear cam cable not longer enough.**

A: If you need the extension cable for your Van/SUV, Please feel free contact with our seller to get one:

## - Product Specification -

|                        |   |
|------------------------|---|
| <b>Display Screen</b>  | <b>3.16-inch IPS Screen</b>                             |
| <b>Wifi/GPS</b>        | <b>Support</b>  |
| <b>sensor</b>          | <b>Built-in</b>   |
| <b>Resolution</b>      | <b>Front-4K Rear-1080P</b>                              |
| <b>Lens</b>            | <b>170 Degree Ultra-Wide Angel Lens</b>                 |
| <b>Language</b>        | <b>English, German, Japanese, etc.</b>                  |
| <b>Video Format</b>    | <b>MP4</b>  |
| <b>Picture Format</b>  | <b>JPEG</b>   |
| <b>Microphone</b>      | <b>Support</b>  |
| <b>SD Card</b>         | <b>64G(inserted in dash cam ),<br/>Max support 128G</b> |
| <b>Power Interface</b> | <b>5V/2A</b>  |

## - FCC Warning -

This device complies with Part 15 of the FCC Rules. Operation is subject to the following two conditions:

(1) This device may not cause harmful interference, and (2) this device must accept any interference received, including interference that may cause undesired operation.

NOTE 1: This equipment has been tested and found to comply with the limits for a Class B digital device, pursuant to part 15 of the FCC Rules. These limits are designed to provide reasonable protection against harmful interference in a residential installation. This equipment generates, uses and can radiate radio frequency energy and, if not installed and used in accordance with the instructions, may cause harmful interference to radio communications. However, there is no guarantee that interference will not occur in a particular installation. If this equipment does cause harmful interference to radio or television reception, which can be determined by turning the equipment off and on, the user is encouraged to try to correct the interference by one or more of the following measures:

- Reorient or relocate the receiving antenna.
- Increase the separation between the equipment and receiver.
- Connect the equipment into an outlet on a circuit different from that to which the receiver is connected.
- Consult the dealer or an experienced radio/TV technician for help.

NOTE 2: Any changes or modifications to this unit not expressly approved by the party responsible for compliance could void the user's authority to operate the equipment.

### RF Exposure Statement

To maintain compliance with FCC'S RF Exposure guidelines, This equipment should be installed and operated with minimum 20cm between the radiator and your body. This device and its antenna(s) must not be co-located or operation in conjunction with any other antenna or transmitter.