

## 1. Antenna Description:

|                 |                                     |
|-----------------|-------------------------------------|
| Antenna type    | PIFA antenna                        |
| Model           | F100                                |
| Frequency range | 2400-2500MHz                        |
| Manufacturer    | SHENZHEN CAR DVR TECHNOLOGY CO. LTD |
| ANT Peak Gain   | 1.12 dBi                            |

## 2. Antenna Photo:

Length :44.38mm  
Width:7.96mm



### 3. Test Equipment & Conditions

#### 3.1 Test instrument

VSWR is tested using Agilent E5071B connected to a hand mechanism, and the status is free space.

#### 3.2 Test environment and methods

Dark room specifications: ETS-743

TD-SCDMA test equipment: StarPoint SP6010/Agilent 8960

LTE-TDD/FDD-SCDMA test equipment: StarPoint SP8011/CMW500

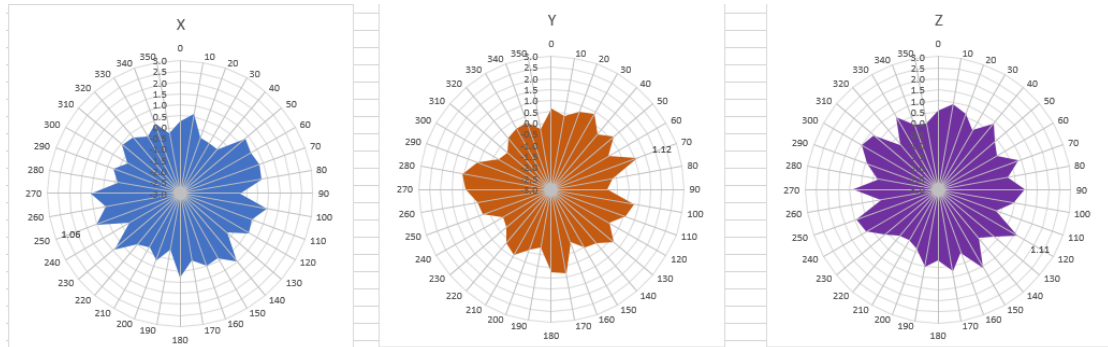
WCDMA/GSM/CDMA test equipment: Agilent 8960

Passive efficiency testing equipment: Agilent Technologies E5071B

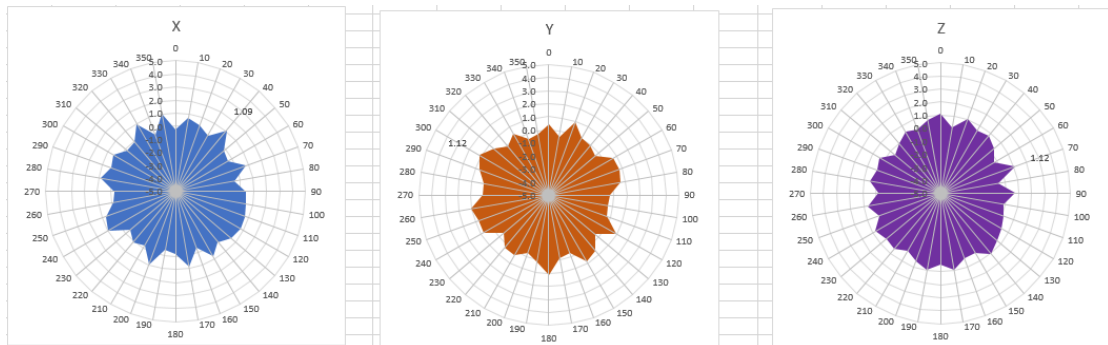


## 4 . Antenna Radiation Pattern

2400MHz



2450MHz



2500MHz

