

Work Manual

**Fixed Mode
(Administrator)**

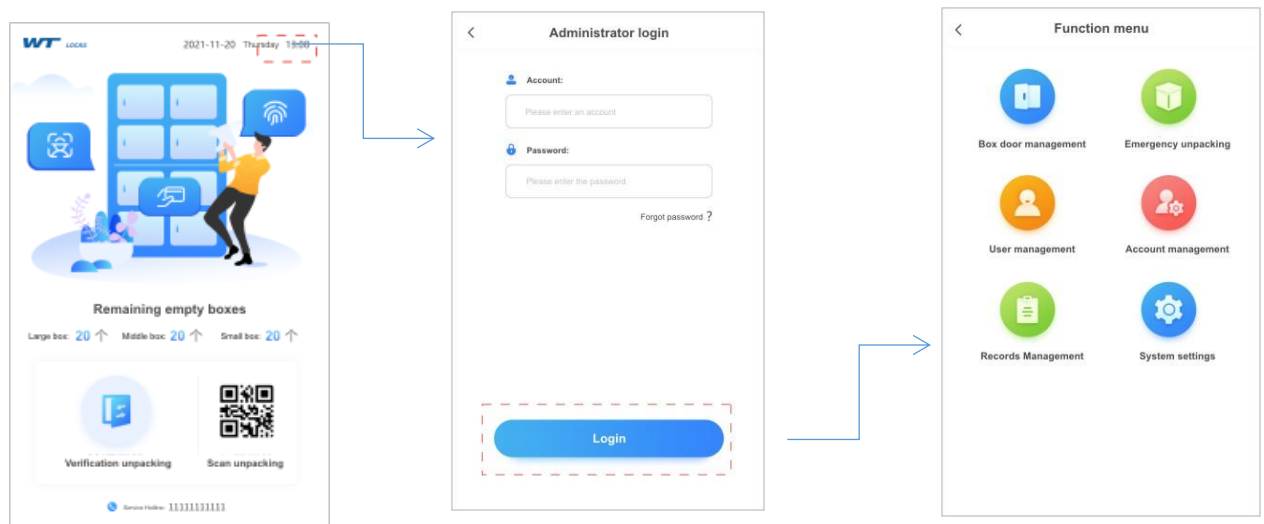
FC ID: 2BG47XLY-9000

Product Introduction

1. The following operations are for administrators only.
2. This operation guide applies to the controller in fixed mode.
3. The operation of this product has a total of 6 functional modules, which will show the operation steps for users according to the user's operation sequence.
4. Because the verification mode is set according to the customer's selection before delivery, the administrator needs to perform operations according to the actual interface

Instruction

Login Action



First, click on the red box in the upper right corner 5 times ➡

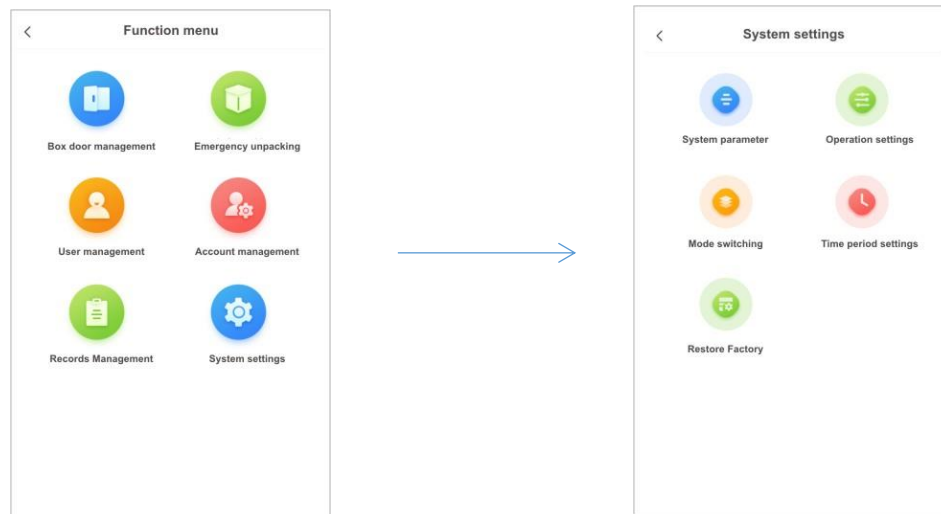
Secondly, in the login interface, enter the correct account and password ➡

Click to log in ➡ Login successful, can jump to the main interface

- The factory account is: admin, and the factory password is 1234. This account has controller management function, account and password leakage can cause system abnormalities;
- If the first person in charge is the cabinet manufacturer, and the cabinet manufacturer does not add an administrator on the controller side for the customer when selling, so it is necessary to inform the customer that the factory account and password must only be known to senior administrator, to authorize ordinary administrator in other departments, please add corresponding accounts in Account Management.

Functional Module

System Setting

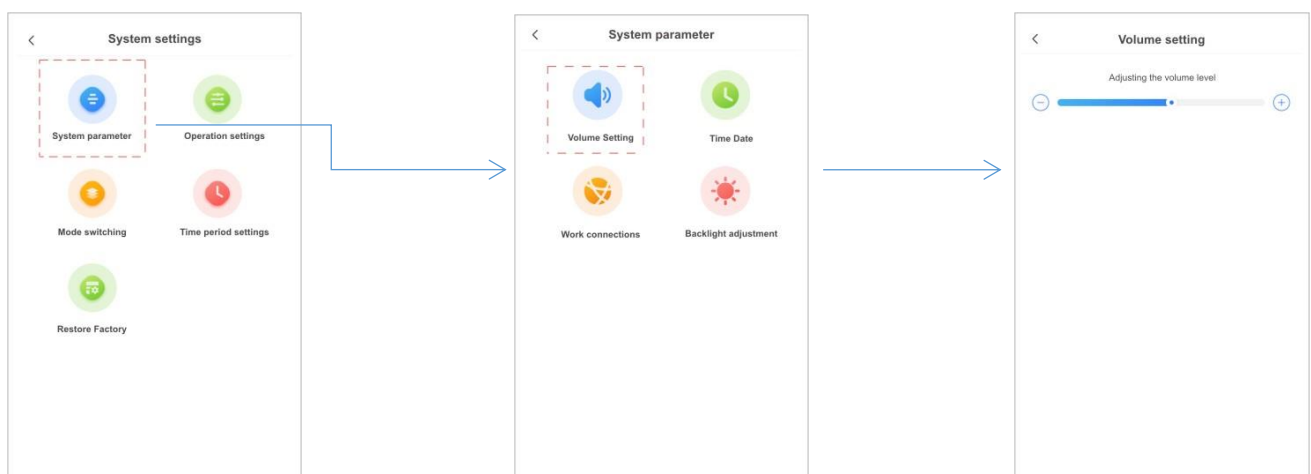


Click on administrator information ➡ Select the administrator to modify ➡ Enter the information you want to modify and click OK

- The system setting module is divided into 5 parts, and administrator can modify some parameters.

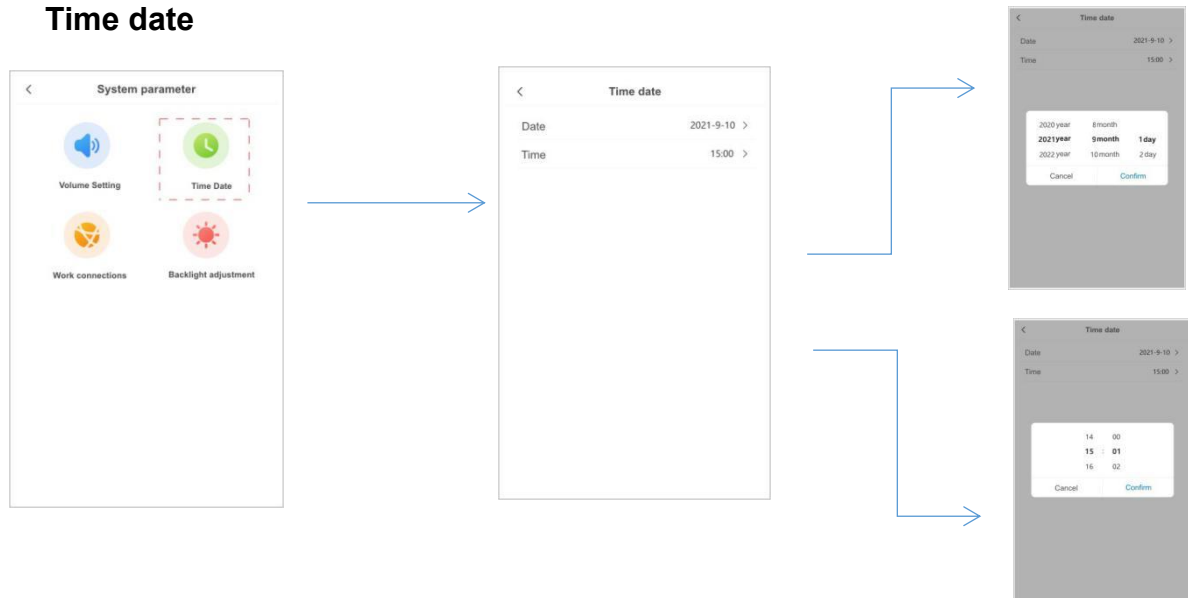
1、System Parameter Setting

Volume setting



Click on system device setting ➡ Click on volume setting ➡ Adjusting the volume ➡ Click on the volume setting to return to the homepage

Time date

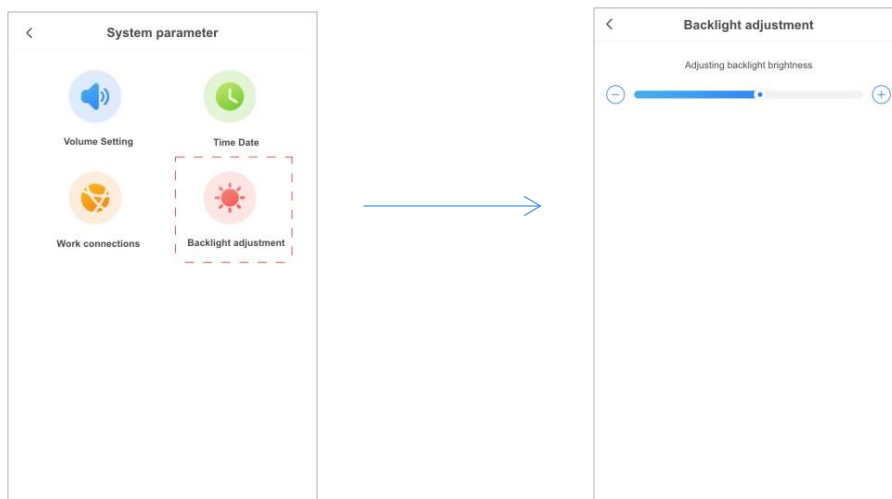


Click on time and date ➡ Modification date and time ➡ Click OK

Network address

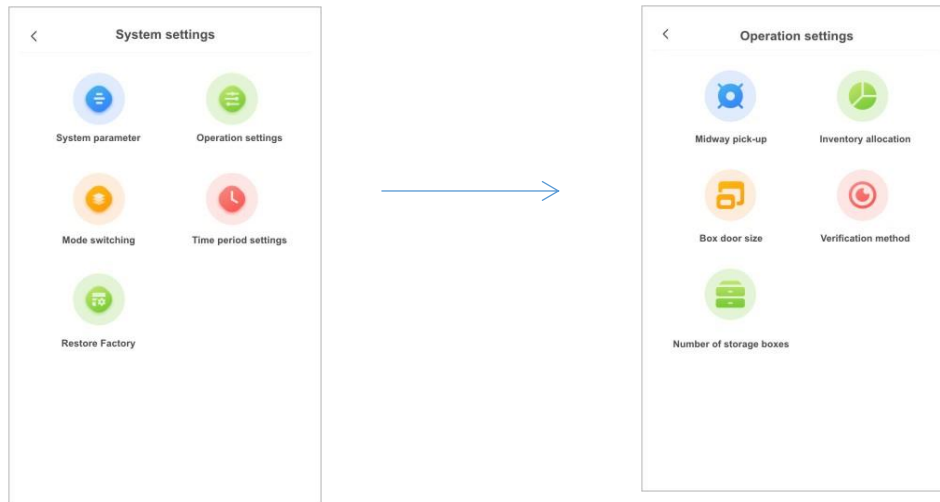
Network address can be modified according to actual conditions

Backlight adjustment



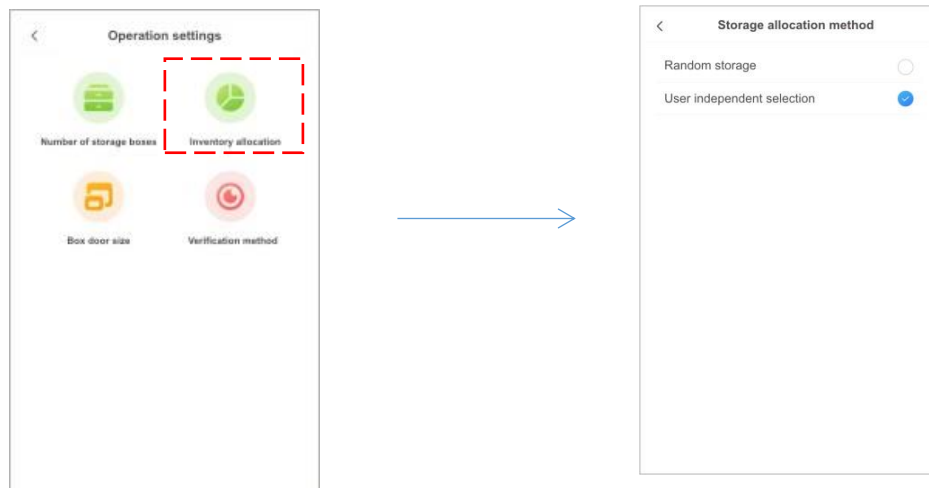
Click on backlight adjustment to adjust the backlight ➡ According to your needs

2、Operation Setting



The operation setting module has a total of 5 functional components, which administrators can set according to actual needs.

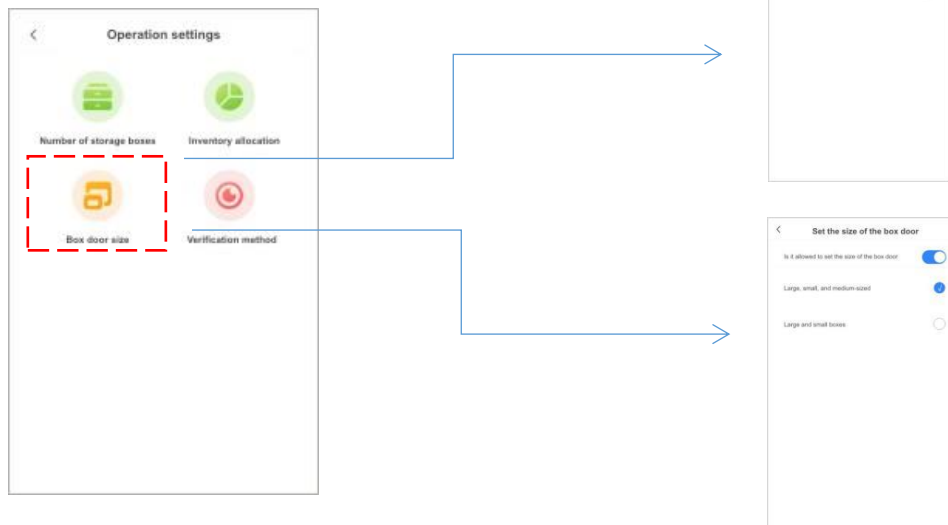
Inventory allocation



Click on inventory allocation ➡ Choose the desired storage method

- In the storage process, choosing "random storage" means that the box door is directly allocated by the system during storage;
- During the storage process, selecting "user independent selection" means that the user can independently select the box door to open during storage.

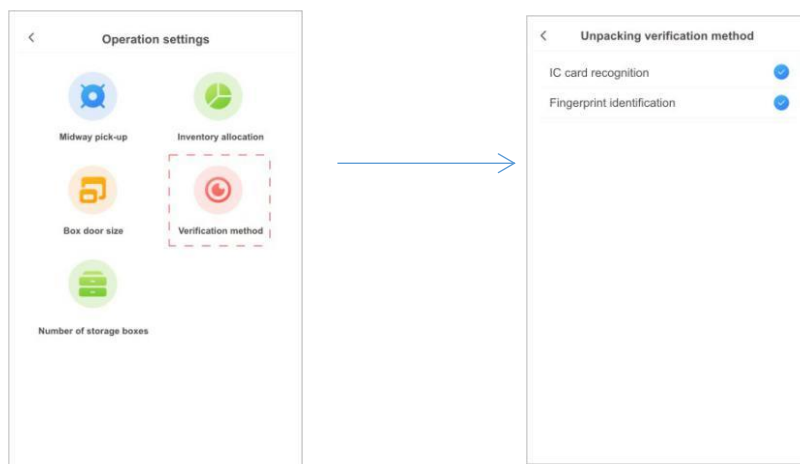
Box door size



Click on the box door size ➡ Do you need to set the size of the selected box door

- Administrator can choose whether to open the box door size setting based on the actual container.

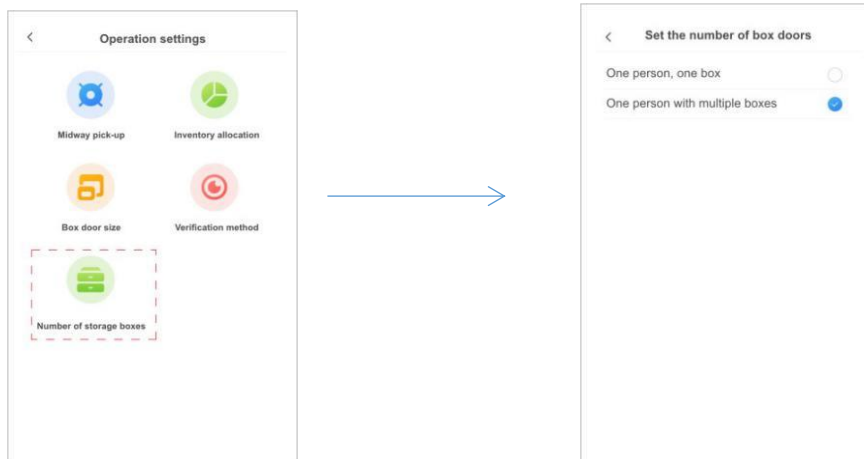
Unpacking verification method



Click on verification method ➡ Select verification method

- Selecting 'Fixed Mode' means that only users who have already been added can be hosted;
- Please note that after mode switching, the controller will restore its factory settings, but does not include administrator information.

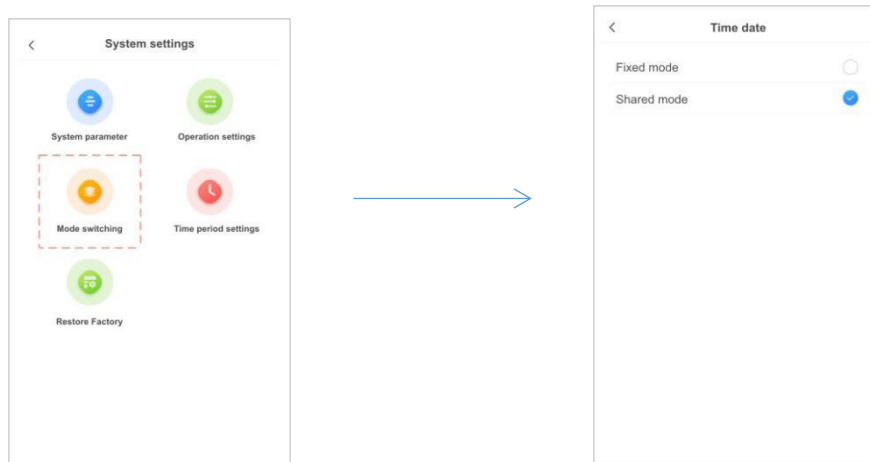
Number of storage boxes



Click on the number of storage boxes ➡ Select the number of box doors that can be opened simultaneously by one person during storage

- Selecting "one person, one box" means that when storing items at a time, one person can only open one box door;
- Selecting "one person with multiple boxes" means that when storing items at a time, one person can only open multiple box doors

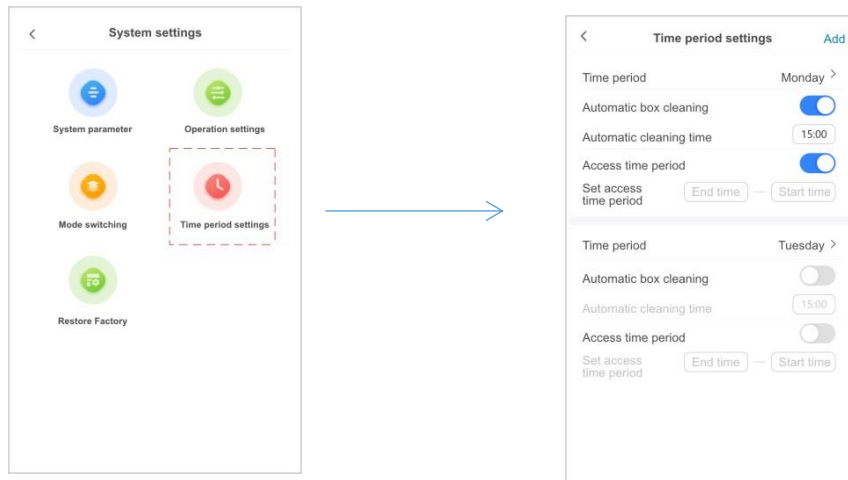
3、Mode Switching



Click on mode switch ➡ Select mode

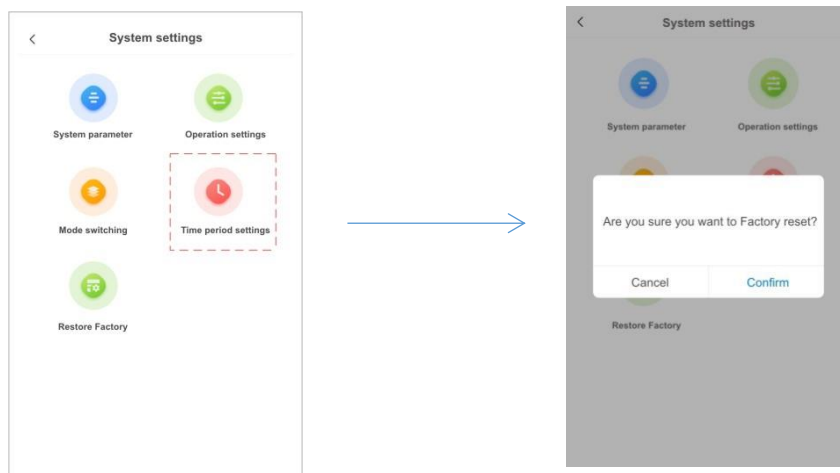
- Select "sharing mode" to represent temporary users, or they can be hosted;
- In the shared mode, administrators add long-term fixed users on the controller side; It can also be deposited;
- Please note that after mode switching, the controller will restore its factory settings, but does not include administrator information.

4、Time Period Settings



Click on time period settings ➡ Set access window and cleaning time

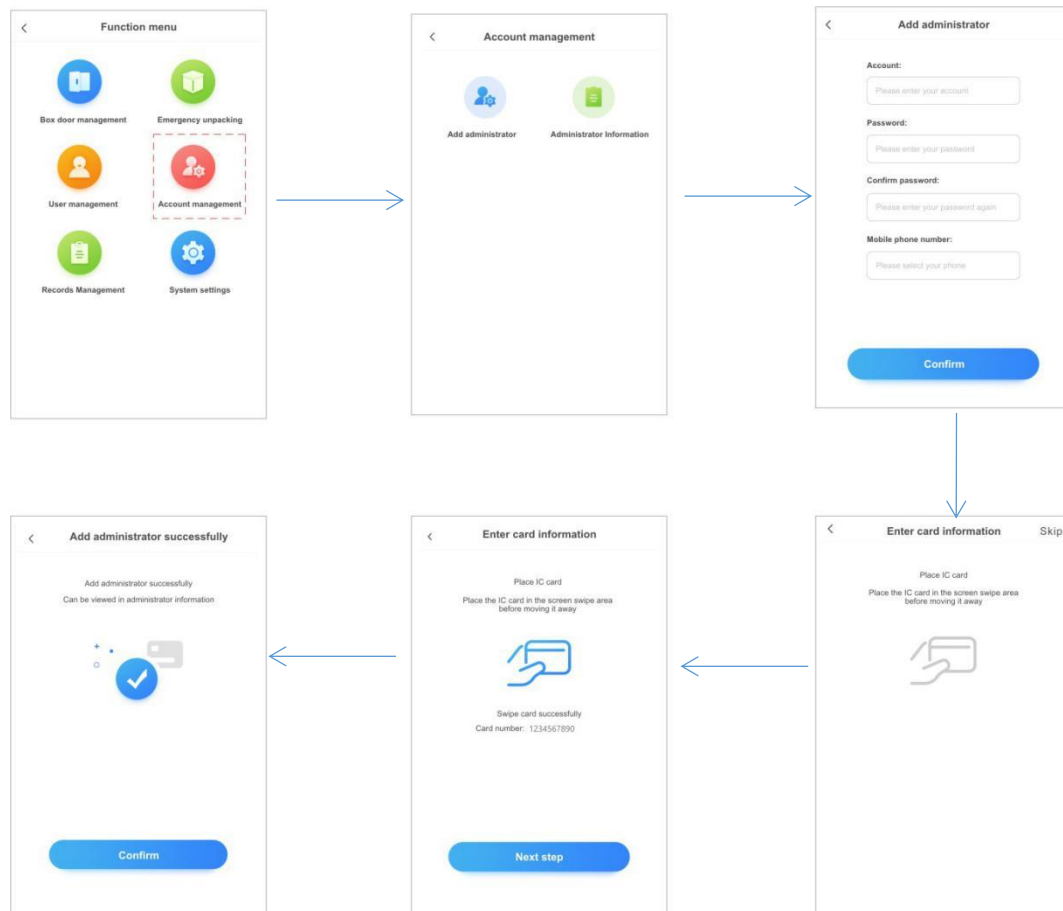
5、Restore Factory



Click to restore factory ➡ Reconfirm whether to restore factory settings

Account Management

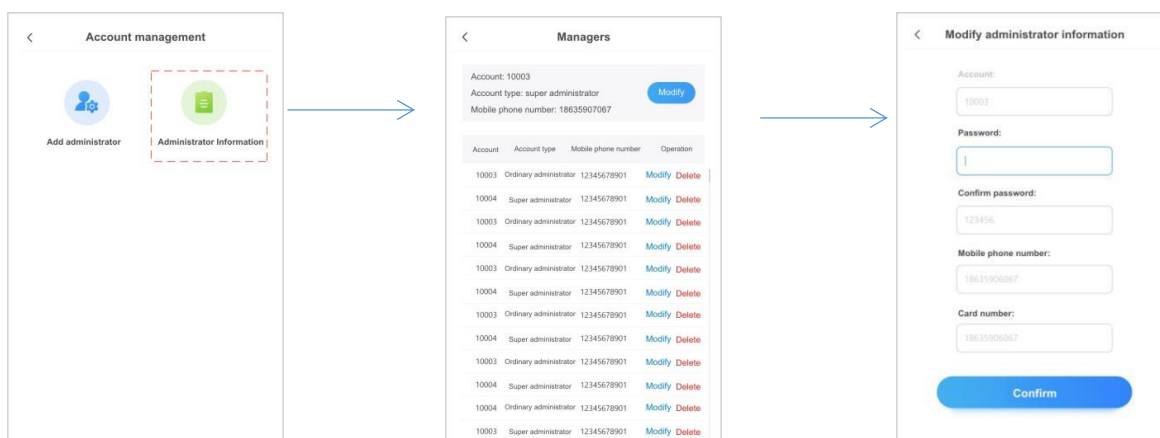
Increase



Click on account management ➡ Click to add an administrator ➡ Fill in the newly added administrator information as required ➡ Click OK
According to the system prompt, place the card at the swipe identification point.
After the interface prompts that the card has been successfully added, click OK

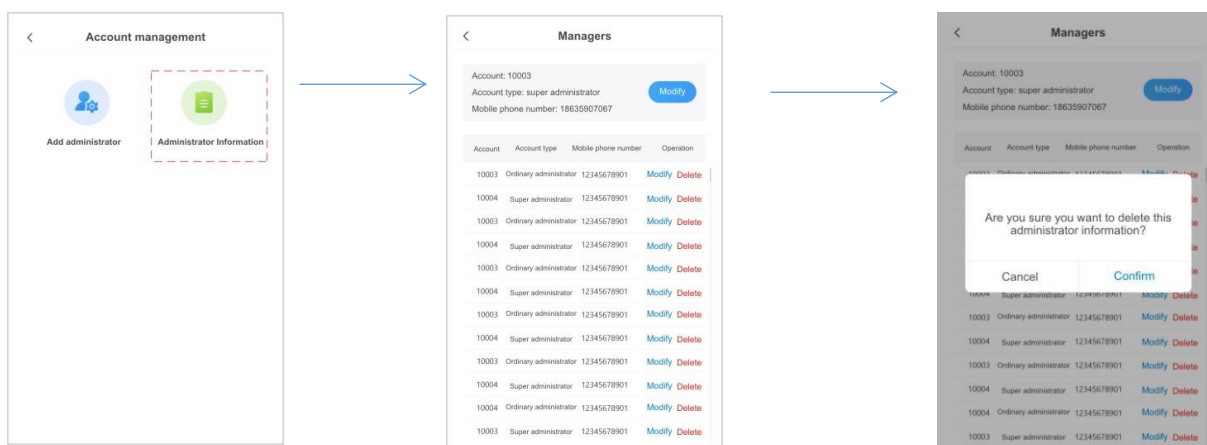
- When entering a card, if you do not want to enter it, you can choose "Skip" in the upper right corner;
- The account management module adds administrator, and company administrators can add department administrator here;
- When the added administrator logs in to the controller again, they can directly move the added card close to the sensor swipe card, which will directly redirect to the administrator login interface. The administrator account will be automatically filled in, just enter the password, you can log in now;
- Administrator can add multiple at the same time.

Modification



Click on administrator information In the administrator list ➡ Select the administrator you want to modify and click modify ➡ In the pop-up modification interface, you can modify the administrator information again

Delete



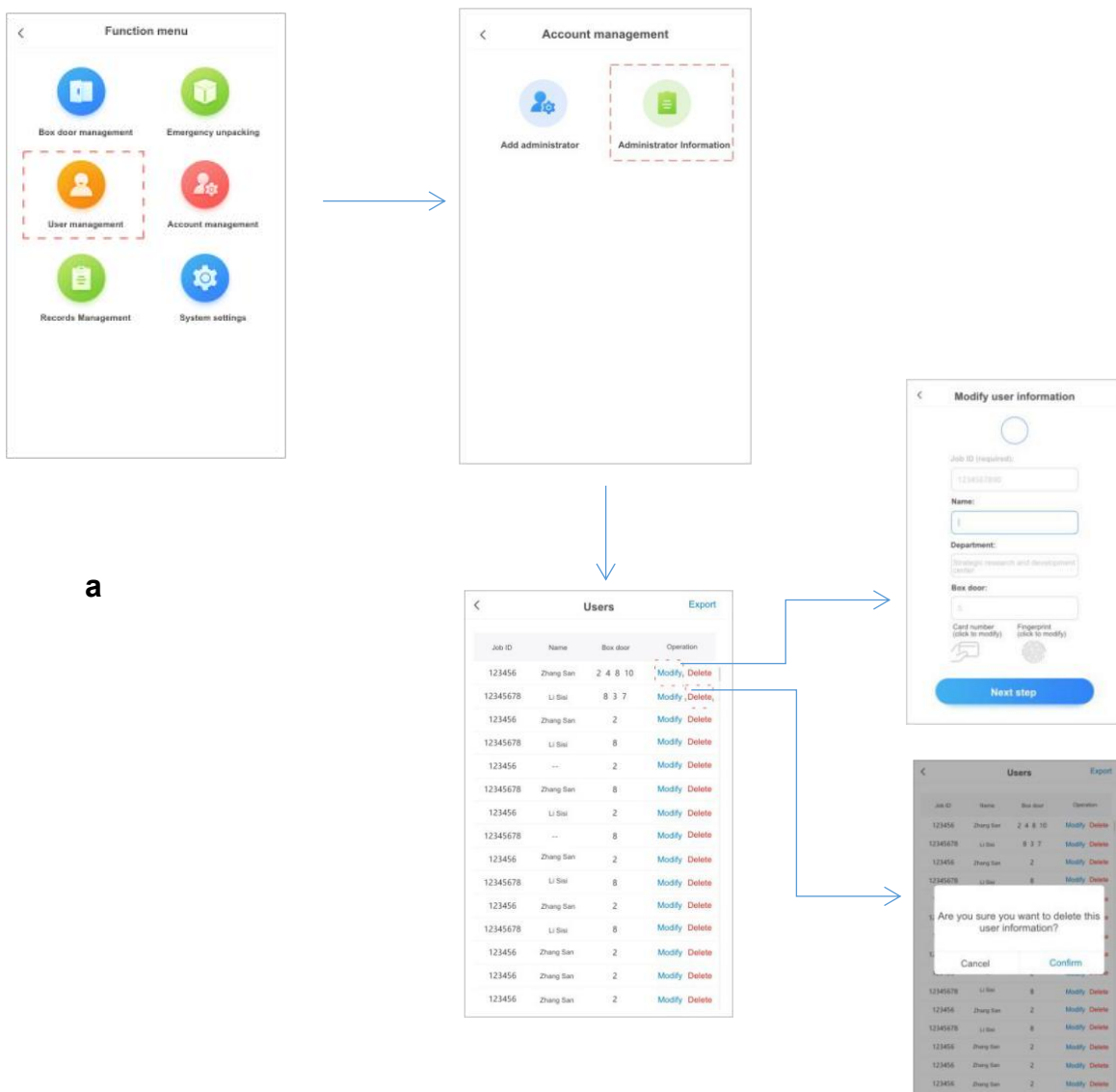
Click on administrator information ➡ In the administrator list ➡ Select the administrator you want to delete and click delete ➡ In the pop-up modification interface, you can confirm again whether to delete the Management

User Management

When the networking version is in fixed mode, the administrator cannot add common users from the controller side, only from the background

Add: The controller can view and delete user information

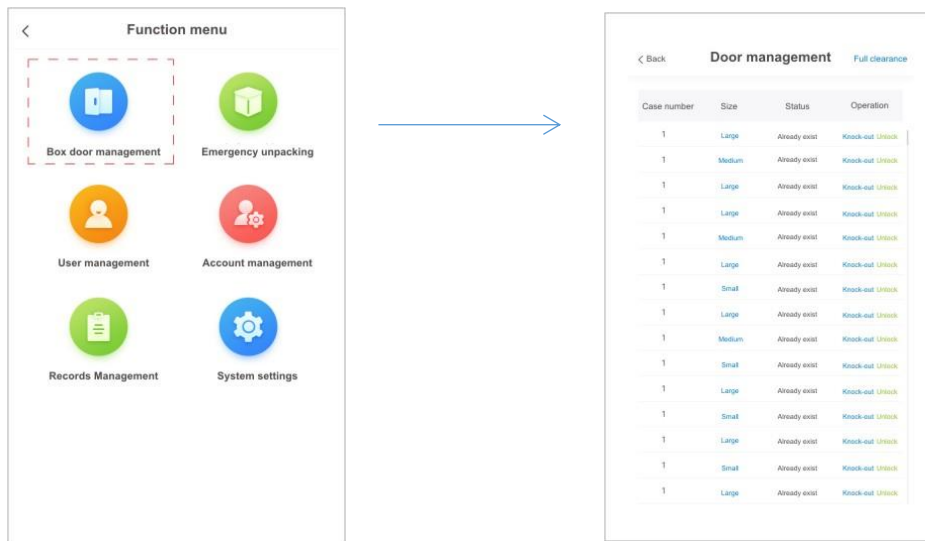
Modify/Delete



Click on user information ➡ In the user list ➡ Choose to modify user information/delete user actions

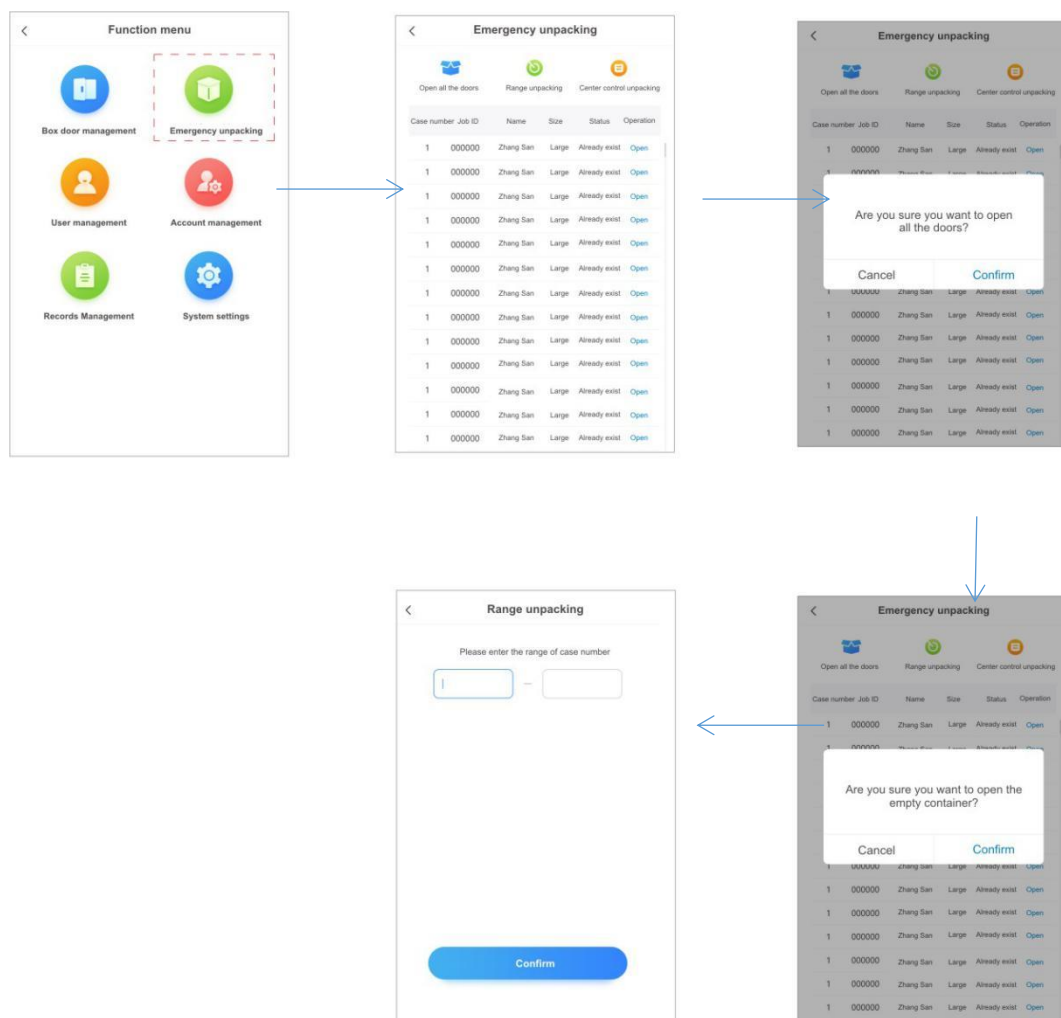
- The user information list can be exported locally through the "export" button in the upper right corner.

Box Door Management



Click on box door management ➡ In the box door list ➡ Can view the status of the box door/remotely operate the box door

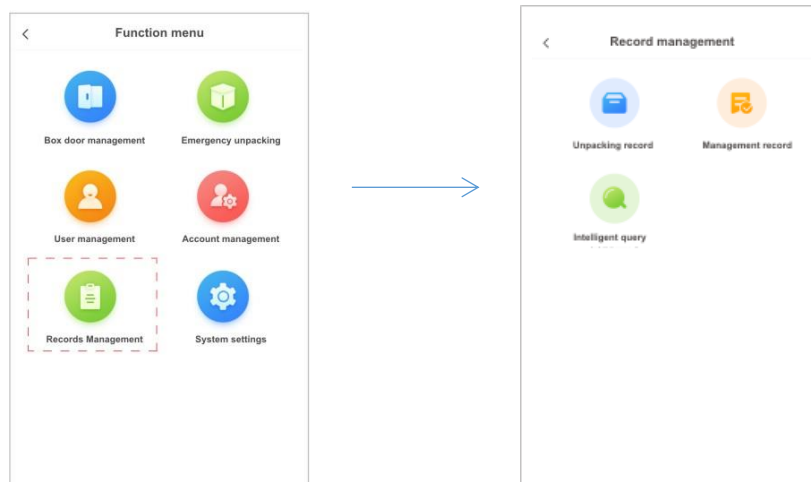
Emergency Unpacking



Click on emergency management ➡ List of displayed box door information ➡ Remote operation of the box door

- Select "fully open box door" to represent the box doors connected to this controller, all of which will open;
- Selecting "scope unpacking" means that you can specifically open certain box doors;
- Selecting "central control unpacking" means that the door of the controller's box will be opened;
- Administrators can also select a single box door to open and directly click on "open box" behind the box door.

Record Management



Click on Record Management ➡ You can view the usage records of the container on this interface

Inventory records

Inventory record			Export
1	Case number: 2 Zhang Sen (000000) Swipe card	2021-09-01 10:55:23	
2	Case number: 2 Zhang Sen (000000) Swipe card	2021-09-01 10:55:23	
3	Case number: 2 Zhang Sen (000000) Swipe card	2021-09-01 10:55:23	
4	Case number: 2 Zhang Sen (000000) Swipe card	2021-09-01 10:55:23	
5	Case number: 2 Zhang Sen (000000) Swipe card	2021-09-01 10:55:23	
6	Case number: 2 Zhang Sen (000000) Swipe card	2021-09-01 10:55:23	

Management records

Management record			Export
Case number	Operation	Time	
1	Knock-out	2020-09-01 13:28:23	
2	Open	2020-09-01 13:28:23	
3	Open	2020-09-01 13:28:23	
4	Open	2020-09-01 13:28:23	
5	Open	2020-09-01 13:28:23	
6	Knock-out	2020-09-01 13:28:23	
7	Knock-out	2020-09-01 13:28:23	
8	Knock-out	2020-09-01 13:28:23	
9	Open	2020-09-01 13:28:23	
10	Open	2020-09-01 13:28:23	
11	Open	2020-09-01 13:28:23	
12	Open	2020-09-01 13:28:23	
13	Open	2020-09-01 13:28:23	
14	Open	2020-09-01 13:28:23	
15	Open	2020-09-01 13:28:23	

Intelligent query

Back

Intelligent query

User number:

Please enter your user number

User name:

Please enter your user name

Case number:

Please enter your case number

Start time (required):

Please enter your start time

End time (required):

Please enter your end time

Confirm

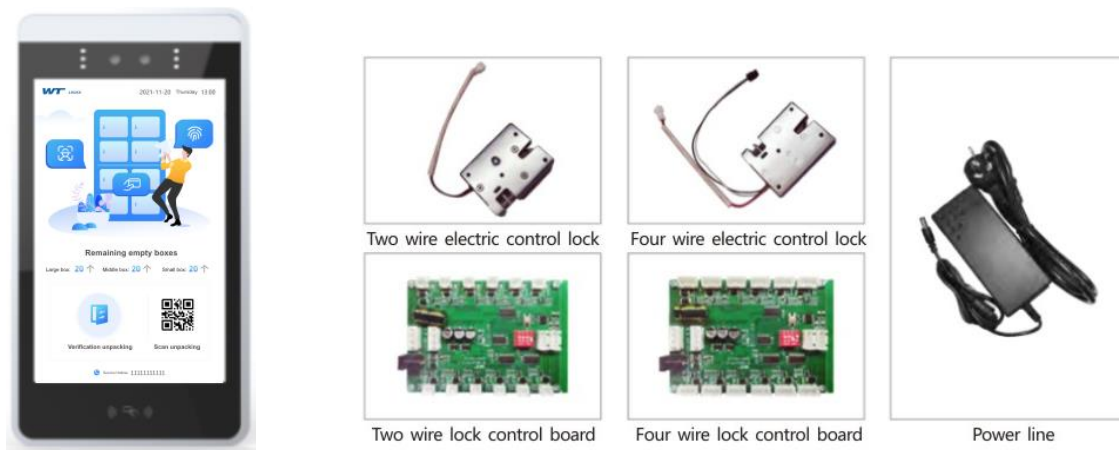
Special Functions

1. Users should pay attention to moisture-proof and sunscreen when using the product, otherwise it will cause the product to not be used properly.
2. Please take attention that changes or modification not expressly approved by the party responsible for compliance could void the user's authority to operate the equipment.

This device complies with Part 15 of the FCC Rules. Operation is subject to the following two conditions:

- (1) This device may not cause harmful interference, and
- (2) This device must accept any interference received, including interference that may cause undesired operation.

Product Composition Introduction



- One controller can control 16 locking boards;
- A lock control board can control 12 locks;
- One power supply (12V-15V, 3A) is recommended to be able to mount 5 locking boards;
- The line needs to be calculated based on the cabinet body.

Product Opening And Installation Display

Unit: mm

