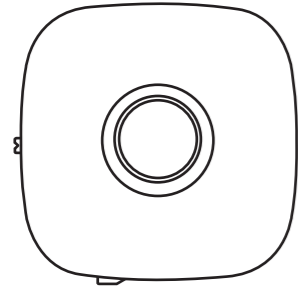


80*100mm

User Manual

M1

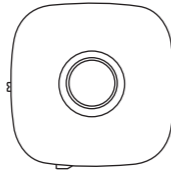
V:1.1



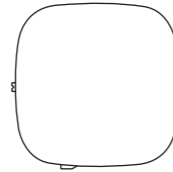
Please read the instructions carefully before use

Thank you for choosing our dog training vibration collar!
This product is designed for simple and effective pet training,
using a gentle vibration to correct unwanted behaviors.

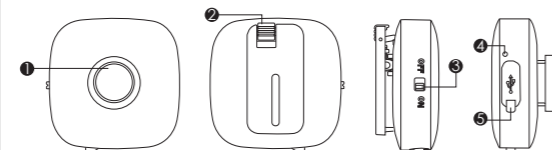
Product Components



Transmitter



Receiver

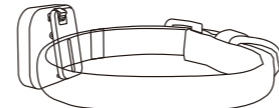
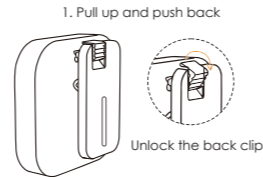


- 1.Vibration Button
- 2.Patented clip
- 3.Power switch

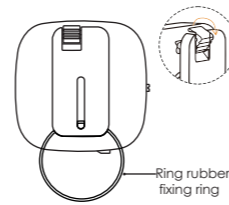
4. Status Indicator Lamp
5. Type-C charging port

Back clip use

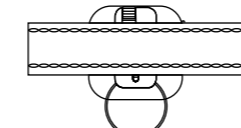
Method of use 1:
(small size collar)



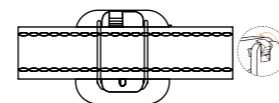
Method of use 2:
(medium and large size collars)



1. Unlock the back clip lock and clamp the rubber fixing ring first.



2. Determine the correct position and fix the collar in front of the back clip.



3. Push the rubber fixing ring upwards and lock the back clip lock.

How to Use

- 1.Charging the Devices
 - Use the provided Type-C charging cables to charge both the transmitter and the receiver.
 - The indicator light will stop flashing when the device is fully charged
- 2.Powering On
 - Turn on the power switches on both the transmitter and receiver to prepare the devices for use.
- 3.Attaching the Receiver
 - Securely fasten the receiver around your dog's neck. Ensure the device makes contact with the skin but is not too tight to avoid discomfort.
- 4.Using the Transmitter
 - Press the button on the transmitter to send a signal to the receiver, which will vibrate to alert your dog to stop unwanted behavior.
 - Repeat as necessary for training purposes.

Features

- **Easy Operation:** The transmitter features a single button for simple operation, making it easy to train your dog.
- **Safe Vibration:** The receiver only has a vibration mode, ensuring no harm to your pet and suitable for long-term training.
- **Type-C Charging:** Equipped with modern Type-C ports for fast charging and wide compatibility.
- **Power Switches:** Easily turn the devices on or off to save battery and extend usage time.

Important Notes

1. Do not use the device while charging to ensure safety.
2. Avoid prolonged use of the vibration mode. Each training session should last around 10-15 minutes to prevent stress on your pet.
3. This product is suitable for pets aged 6 months and older.
4. If your pet shows signs of discomfort, stop using the device and consult a veterinarian.
5. Regularly check both the transmitter and receiver to ensure proper functioning.

Charging Instructions

- The indicator light will flash while charging.
- When fully charged, the indicator light will stop flashing.
- It's recommended to disconnect the charger once the battery is fully charged to avoid overcharging.

Troubleshooting

- 1.The receiver does not vibrate?
 - Ensure both the transmitter and receiver are powered on, and check the battery levels.
- 2.The vibration seems weak?
 - The battery might be low; please recharge the device.
- 3.The device won't charge?
 - Check the Type-C cable or try using a different charging port.

FCC Statement

This equipment has been tested and found to comply with the limits for a Class B digital device, pursuant to part 15 of the FCC Rules. These limits are designed to provide reasonable protection against harmful interference in a residential installation. This equipment generates, uses and can radiate radio frequency energy and, if not installed and used in accordance with the instructions, may cause harmful interference to radio communications. However, there is no guarantee that interference will not occur in a particular installation. If this equipment does cause harmful interference to radio or television reception, which can be determined by turning the equipment off and on, the user is encouraged to try to correct the interference by one or more of the following measures:

- Reorient or relocate the receiving antenna.
- Increase the separation between the equipment and receiver.
- Connect the equipment into an outlet on a circuit different from that to which the receiver is connected.
- Consult the dealer or an experienced radio/TV technician for help.

Caution: Any changes or modifications to this device not explicitly approved by manufacturer could void your authority to operate this equipment.

This device complies with part 15 of the FCC Rules. Operation is subject to the following two conditions:

- (1) This device may not cause harmful interference,
- (2) This device must accept any interference received, including interference that may cause undesired operation.

RF Exposure Information

The device has been evaluated to meet general RF exposure requirement. The device can be used in portable exposure condition, compliance with exposure requirements.

CE FCC RoHS UKCA   MADE IN CHINA