

成品尺寸：85\*111mm  
展开尺寸：170\*111mm

请仔细校对文字、图案、内容、尺寸，若要修改请书面说明，若无异议请确认！！

Date and Time Display

Press Time Set DATE (1) button to switch between 12 and 24 hour time.  
Press Time Set DATE (1) button again quickly to view month, day and year.

Setting Clock

Press and hold Time Set DATE (1) button to enter time and date set mode. Use the + and - buttons to select time. Press the Alarm button again to set the minutes and again to set the alarm for all 7 days of the week, Monday- Friday or just Saturday and Sunday. Quick press the corresponding alarm button to set alarm or turn alarm off. Use Hi/Low switch near power ports on back of clock to adjust alarm volume.

Setting Alarm

Press and hold Alarm 1 or 2 (2) button to set the alarm time. Use the + and - buttons to select hour. Press the Alarm button again to set the minutes and again to set the alarm for all 7 days of the week, Monday- Friday or just Saturday and Sunday. Quick press the corresponding alarm button to set alarm or turn alarm off. Use Hi/Low switch near power ports on back of clock to adjust alarm volume.

Snooze Time Set

Default snooze time is 10 minutes. Press and hold snooze/multicolor button until display flashes. Use + and - buttons to select 1 to 15 minutes. Press snooze again to confirm setting.

Charging Devices

USB-A and USB-C ports located at the back of clock for charging earbuds, smart watches and other small USB devices. Do not connect USB devices that exceed the power output rating for the port.

Fast wireless charging works with most standard thickness protective cases made of plastic. Remove any metal case or metal plate adhered to the back of your phone prior to charging. Metal cases and metal plates will cause interference that could damage your phone. Never use the charger to charge smartphones with metal cases or metal plates between the case and the phone. Some additional non-metal protective cases may also interfere with proper charging.

CAUTION! Device must have Qi enabled charging. Check with manufacturer for compatibility.

The charger and phone will feel warm during or after charging.

WARNING! IMPORTANT CARE AND SAFEGUARDS

Failure to follow the safety instructions can lead to fire, electrical shock, personal injury or property damage and damage to this product.

- Do not use the wireless charging clock for anything other than its intended use.
- This product is not intended charge batteries or other devices.
- If you have an electrical device, such as a pacemaker, consult a physician before using this product.
- Do not place magnetic cards or similar items near charging pad.
- Keep all foreign objects, small metal pieces and debris away from charging surface at all times.
- Make sure charging pad is clear prior to use and at all times.
- Always use the specified power source and voltage.
- Do not use a voltage converter / travel adapter.
- Always place the charging clock on a sturdy and level surface.
- This product contains small parts and is not suitable for children.
- Do not expose this product to rain, water or excessive humidity.
- If the clock becomes wet, immediately unplug it from the power source.
- Keep charging clock away from heat sources and direct sunlight.
- Always use this product in operating temperatures of 32 F (0 C) 95 F (35 C).
- Do not handle charging clock, USB power cord or power source with wet hands.
- Do not let dust or other things accumulate on charging clock and power cord.
- Do not use the charging clock if it has been dropped or damaged in any way.
- Never take this device apart and always get repaired by a qualified technician.
- Always unplug the charging clock when not in use for a long period of time.

FCC Disclaimer: This device complies with part 15 of the FCC Rules. Operation is subject to the following two conditions: (1) This device may not cause harmful interference, and (2) this device must accept any interference received, including interference that may cause undesired operation. NOTE: THE MANUFACTURER IS NOT RESPONSIBLE FOR ANY RADIO OR TV INTERFERENCE CAUSED BY UNAUTHORIZED MODIFICATIONS TO THIS EQUIPMENT. SUCH MODIFICATIONS COULD VOID THE USER AUTHORITY TO OPERATE THE EQUIPMENT.

The Qi symbol is a trademark of the Wireless Power Consortium.

SAVE THESE INSTRUCTIONS FOR FUTURE REFERENCE

Any questions, please call customer service at 1-800-254-0111  
8:30am - 5pm, PST, Monday - Friday, or email us at customerservice@jilrgear.com

2434 Research Dr., Livermore, CA 94550  
© 2024 JLR Gear - Made in China



Multicolor LED

# Charging Clock



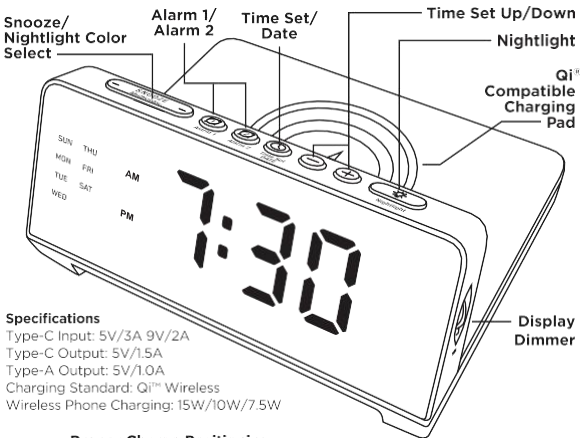
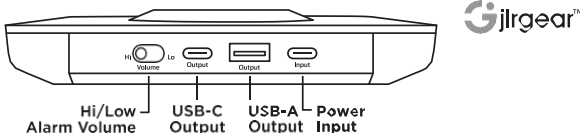
## Product Instruction Manual

Please read carefully prior to use.

Plug into any USB power source  
5V / 2 amp or greater. For faster  
charging, combine with a  
9V / 3 amp USB power source.



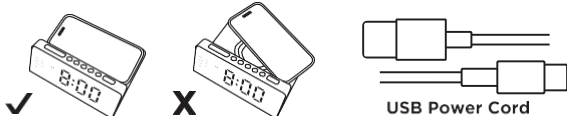
Please call customer  
service at 1-800-254-0111  
with any questions



Specifications

Type-C Input: 5V/3A 9V/2A  
Type-C Output: 5V/1.5A  
Type-A Output: 5V/1.0A  
Charging Standard: Qi™ Wireless  
Wireless Phone Charging: 15W/10W/7.5W

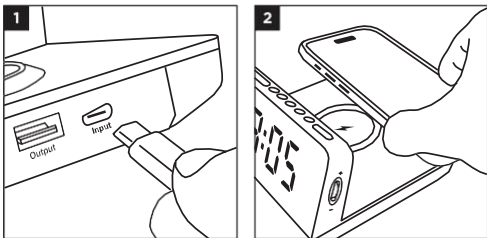
Proper Charge Positioning



Care Tip: Unplug clock and wipe with a soft cloth. Never use any abrasive cleaning agents or get wet. Periodically wipe off accumulated dust.

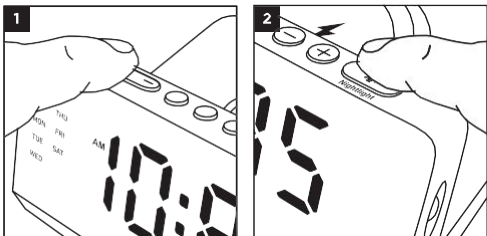
### Connecting Power/Charging Phone

- Connect USB cable to USB-C port on bottom back of charging clock. Connect to USB power source 5V, 3 amps or greater. For faster charging speeds, combine with a 9V, 3 amp USB power source. USB power source not included.
- Place your smartphone onto the charging pad with device centered on the circular pad. Your device will show charging progress on screen.



### Light Functions

- Press snooze/multicolor button to choose from 8 time display color settings. Use dimmer wheel to adjust display brightness or turn off.
- Press nightlight button to turn on, press again to choose from 7 color settings. Press and hold to turn off. Use the + and - buttons to adjust nightlight brightness.



### Battery Backup

- Clock is equipped with batteries that hold time settings during power outages.
- Clock requires 2 "AAA" batteries (not included). To install, remove battery cover on bottom of clock and install batteries following the polarity markings.

## FCC Statement

This equipment has been tested and found to comply with the limits for a Class B digital device, pursuant to part 15 of the FCC Rules. These limits are designed to provide reasonable protection against harmful interference in a residential installation. This equipment generates, uses and can radiate radio frequency energy and, if not installed and used in accordance with the instructions, may cause harmful interference to radio communications. However, there is no guarantee that interference will not occur in a particular installation. If this equipment does cause harmful interference to radio or television reception, which can be determined by turning the equipment off and on, the user is encouraged to try to correct the interference by one or more of the following measures:

- Reorient or relocate the receiving antenna.
- Increase the separation between the equipment and receiver.
- Connect the equipment into an outlet on a circuit different from that to which the receiver is connected.
- Consult the dealer or an experienced radio/TV technician for help.

Caution: Any changes or modifications to this device not explicitly approved by manufacturer could void your authority to operate this equipment.

This device complies with part 15 of the FCC Rules. Operation is subject to the following two conditions: (1) This device may not cause harmful interference, and (2) this device must accept any interference received, including interference that may cause undesired operation.

### RF Exposure Information

This equipment complies with FCC radiation exposure limits set forth for an uncontrolled environment. This equipment should be installed and operated with minimum distance 20cm between the radiator and your body.