

SPECIFICATION

Power Supply Voltage:	DC 5V/3A
Car Charger input:	DC 12~24V
Car Charger output:	DC 5V/3A

Operation Manual

Portable K3pro

ENGLISH

ESPAÑOL

Русский

Portable K3pro

Built-in driving record camera

Ver.202411122200.

Built-in driving record camera



5V USB POWER SUPPLY

This device is powered by 5V USB, After the device is installed, insert the USB plug into the cigarette lighter car charger to start it up and use it.



Car charger
INPUT: DC12~24V
OUTPUT: 5V/3.1A



AUX audio cable



Bracket ①



Bracket ②



DRIVING RECORDER

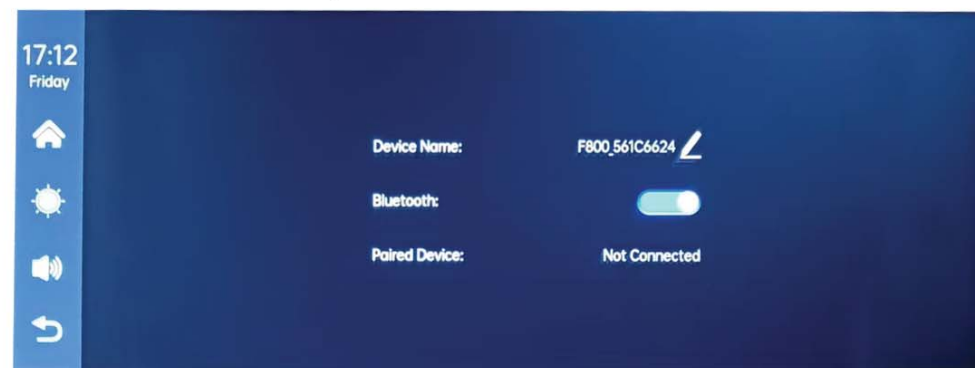
The dash cam has a built-in camera. When a TF card is inserted, it will start recording and automatically save the video to the TF card.



Note: TF card is only used for storage and playback of driving recorder. Music playing software cannot read this card slot.

BLUETOOTH PAIRING CONNECTION

You can use Bluetooth music or Bluetooth calls. When using wireless CarPlay or wireless Android Auto, you need to pair the Bluetooth connection first.



Device Bluetooth Name: "F800_561C6624"PIN
Number:-0000"or "1234"(If need)

AUDIO OUTPUT METHOD

There are 4 audio output methods:



1. Transmit the sound to the original car player by transmitting FM signals.

1). Adjust the original car radio to an empty channel position, such as: "92.3MHz"(to avoid conflicts with local radio, interference signals).

2). Set the FM transmission frequency to be consistent with the frequency of the original car, such as: "92.3MHz".

3). At this time, the sound is transmitted to the original car horn.



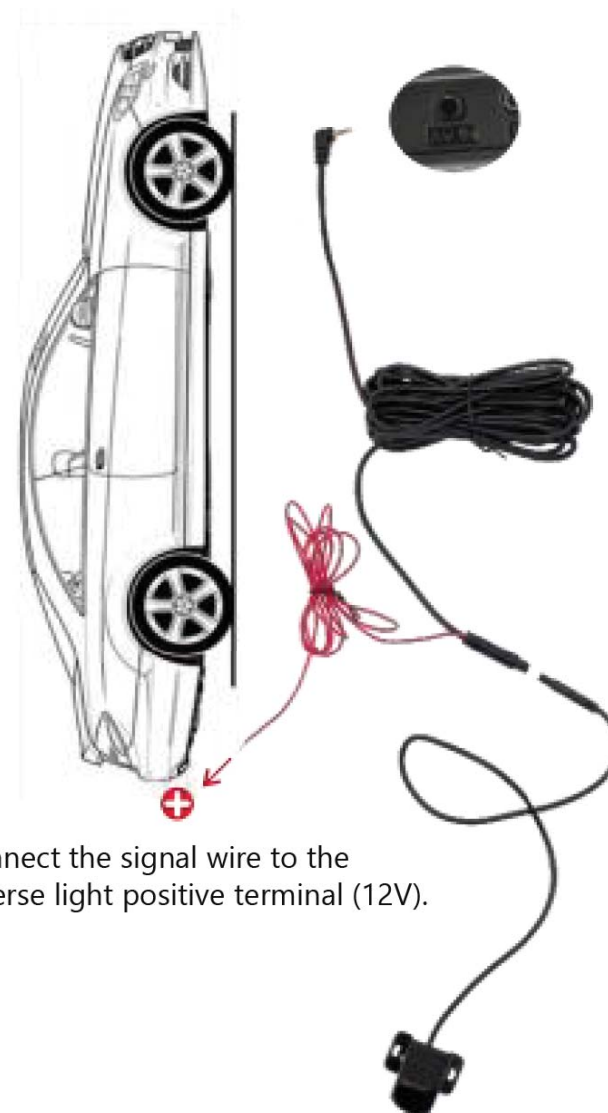
2. Switch between built-in speakers and Bluetooth audio output. When connected to CarPlay or Android Auto, the default output is from the built-in speakers. Click BT to switch to directly connect the phone's Bluetooth to the original car player to output audio.



3. Transmit the sound to the original car player via the AUX line.

REVERSING CAMERA CONNECTION

The reversing video input can be connected via an RCA adapter cable. When there is a signal at this port, the display will automatically pop up the reversing camera image.



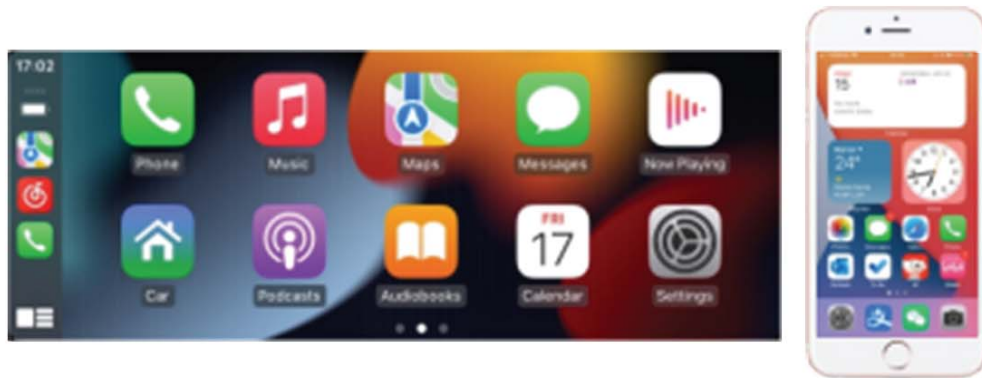
Connect the signal wire to the reverse light positive terminal (12V).

Apple CarPlay (wireless)

CarPlay turns the car player's screen into the second screen of the iPhone, and the phone can be controlled on both screens.

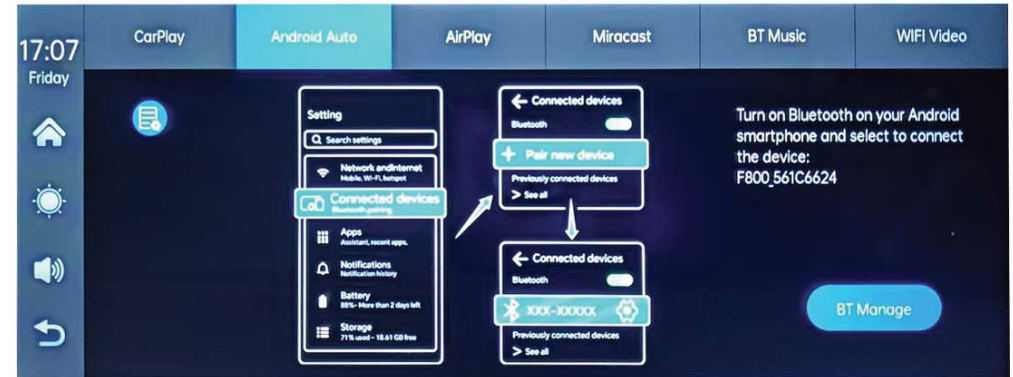


1. Open the iPhone and enter the system settings interface.
2. Enter the Bluetooth interface.
3. Find the recorder name and click to pair and connect F800_561C6624.
4. After successful pairing, a prompt window will pop up on the interface, click to use CarPlay in the car.
5. Connection completed.

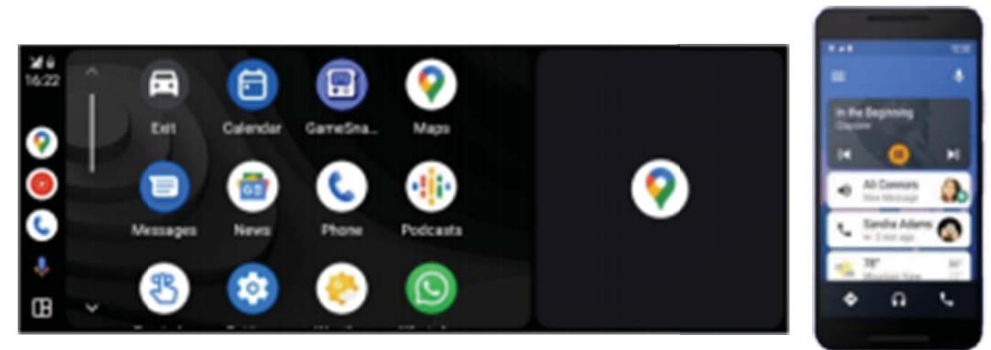


Android Auto (wireless)

Android auto turns the car player's screen into the second screen of the phone, and the phone can be controlled on both screens.



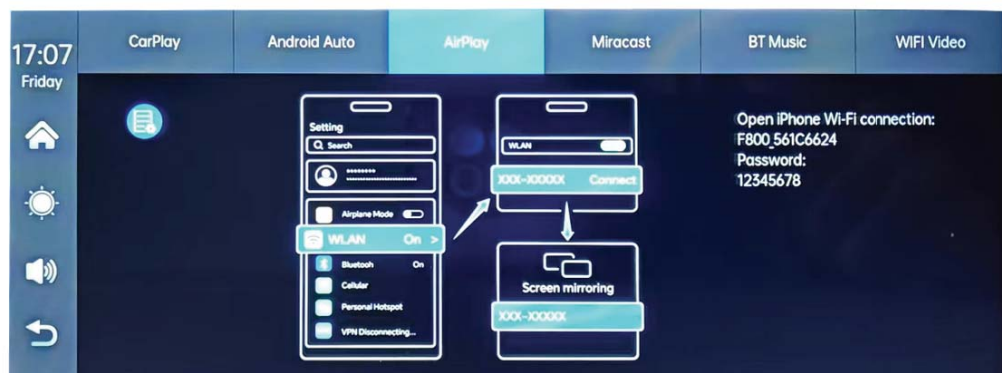
1. Open the Android phone and enter the system settings interface.
2. Enter the Bluetooth interface.
3. Find the recorder name and click to pair and connect F800_561C6624.
4. After successful pairing, the phone will automatically connect to the hotspot of the car and enter the internet interface.
5. Connection complete.



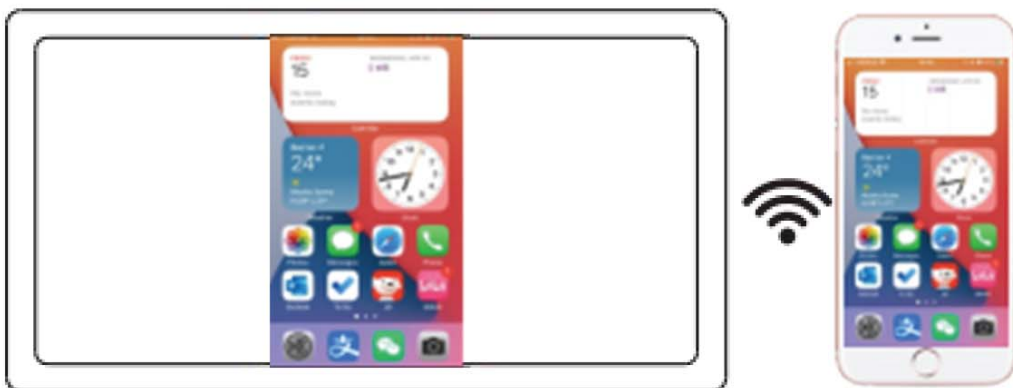
Only cities that can connect to Google services are supported.

Mirrorlink (iPhone wireless)

Mirror the iPhone screen content to the screen of the car player. Mirror the phone screen to the car player screen. WiFi and Bluetooth need to be turned on.

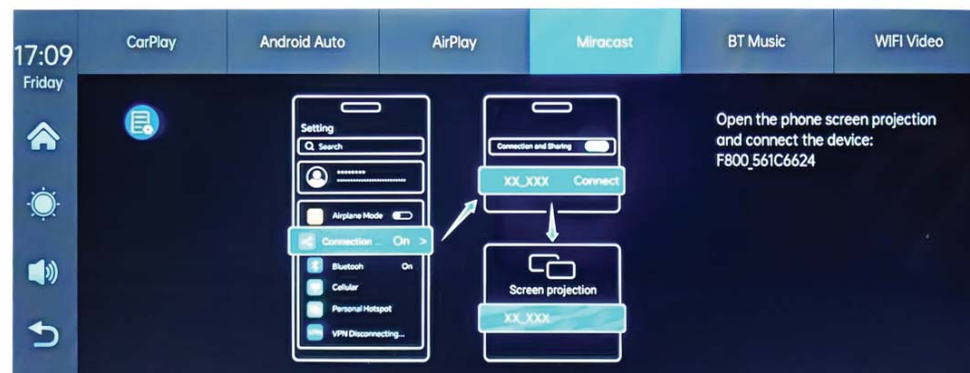


1. Open iPhone and enter System Settings
2. Enter WiFi, connect to your local WiFi, WiFi name: F800_561C6624, Password:12345678
3. After successful connection, enter the phone mirror function, and click connect device F800_561C6624.
4. to complete the connection.



Mirrorlink (Android wireless)

Mirror the Android phone screen content to the car player screen. Mirror the phone screen to the car player screen. WiFi and Bluetooth need to be turned on.

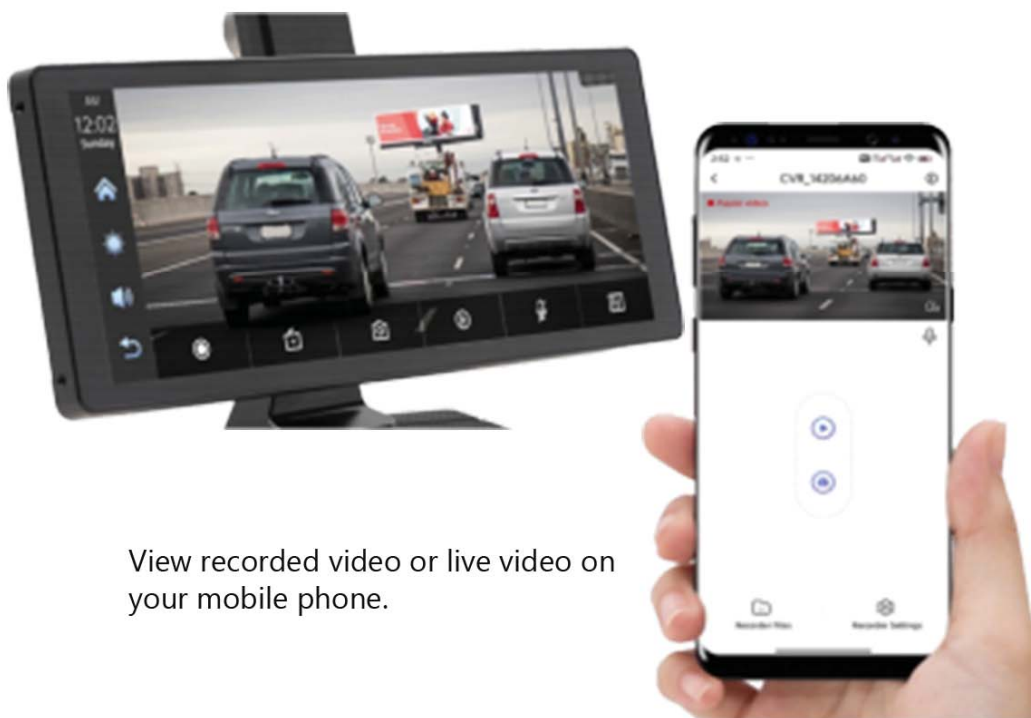


1. Open the Android phone, enter the system Settings screen.
2. Find more connections, open the phone screen F800_561C6624.
3. Wait for miracast to be scanned and click to connect.
4. The connection is complete.



WIFI Video (Live camera screen on mobile phone)

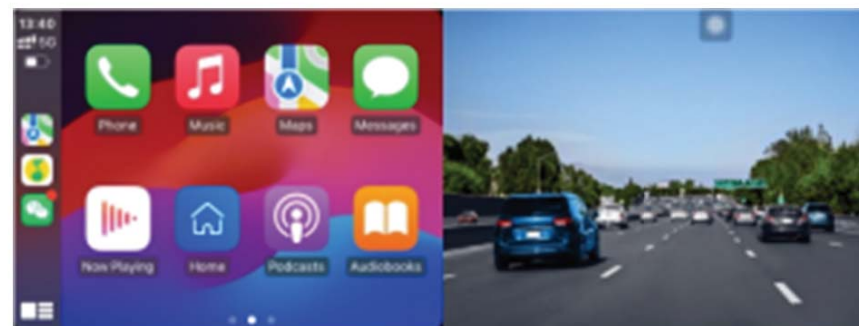
Scan the QR code on your phone to install the APP, and then use the APP to broadcast what you see with the camera.



View recorded video or live video on your mobile phone.

Split screen display

1. Full screen mode: The screen only displays carplay or the dashcam image.
2. Half screen mode: The carplay and driving recorder images are displayed on the screen, each occupying half of the screen.



Recorder screen

Reversing camera image



COMMON PROBLEMS AND SIMPLE TROUBLESHOOTING

1. Bluetooth cannot be used normally.

Delete the paired "SWL-BT" on the phone, and then search the Bluetooth name "SWL-BT" again. After pairing successfully, it can be used normally.

2. Unable to automatically connect to CarPlay or Android Auto.

1) You need to set CarPlay or Android Auto as the default connection method in the Phonelink settings interface.

2) You need to turn on wifi on the phone, and then it will automatically jump to the CarPlay or Android Auto interface after Bluetooth is connected.

3. The sound of playing music or making calls is low.

On the machine, turn up the volume.

4. Unable to remember time, date, and settings.

The machine has no battery, so it cannot remember time and date. After connecting to the mobile phone Bluetooth, it will automatically update the time and date.

5. Unable to play USB music and videos.

There is no USB port and USB disk playback is not supported.

6. The FM transmission signal is poor and there is noise interference?

If the FM transmission signal is poor, you need to fix the car radio and plugin the antenna, and organize the wiring harness to avoid frequency band interference.

7. Wireless CarPlay is often disconnected or unusable?

When connecting to CarPlay, please do not connect your phone to other wireless networks to avoid CarPlay disconnection.

8. Is the bracket not firm, the suction cup is not sticky enough, and the adhesion is unstable at high temperature?

When pasting, keep the pasting position clean and dry to avoid bubbles, unstable adhesion, etc.

9. Bluetooth is not synchronized, and the other party can't hear the sound or there is noise?

Make sure that the mic position of the device is not blocked by foreign objects.

10. Does this product have a built-in battery?

No, this product does not have a built-in battery. For environmental considerations, we decided not to include it.

11. There is no sound from the device?

Please confirm whether the FM transmitter function is turned on, because when the FM transmitter function is turned on, the built-in speaker of the device will also be turned off and no sound will be emitted.

12. Does the device support reversing camera?

Yes, there is an AV IN interface on the side of our product, and the reversing camera can use external AV input.

13. Will the product consume power?

This depends on whether the car is started. When the engine is turned on and the car starts, the cigarette lighter power comes from the generator, not from the battery, so the power consumption of the device will not affect the battery power.

14. How to enter standby mode?

Turn on standby mode. If the device has physical buttons, press the physical buttons to turn off the screen. If the device does not have physical buttons, click the sun icon in the upper left corner of the device's main menu page.

Click once to turn it into a moon icon (low brightness mode), and click again to turn off the screen.

FCC Statement:

This device complies with part 15 of the FCC Rules. Operation is subject to the following two conditions: (1) This device may not cause harmful interference, and (2) this device must accept any interference received, including interference that may cause undesired operation.

This equipment has been tested and found to comply with the limits for a Class B digital device, pursuant to part 15 of the FCC Rules. These limits are designed to provide reasonable protection against harmful interference in a residential installation. This

Equipment generates, uses and can radiate radio frequency energy and, if not installed and used in accordance with the instructions, may cause harmful interference to radio communications. However, there is no guarantee that interference will not occur in a Particular installation. If this equipment does cause harmful interference to radio or television reception, which can be determined by turning the equipment off and on, the user is encouraged to try to correct the interference by one or more of the following measures:

- Reorient or relocate the receiving antenna.
- Increase the separation between the equipment and receiver.
- Connect the equipment into an outlet on a circuit different from that to which the receiver is connected.
- Consult the dealer or an experienced radio/TV technician for help.

Caution: Any changes or modifications not expressly approved by the party responsible for compliance could void the user's authority to operate the equipment.

This equipment complies with FCC radiation exposure limits set forth for an uncontrolled environment. This transmitter must not be co-located or operating in conjunction with any other antenna or transmitter.

This equipment should be installed and operated with minimum distance 20cm between the radiator & your body.

If you have any questions about this product,
please scan the QR code and contact us!

