



MFSC 12000 (G6.1) CW Fiber Laser Series

USER GUIDE

Copyright Notation

Copyright © Maxphotonics Co., Ltd (here after referred to as Maxphotonics). All rights reserved. You may not copy, modify, transmit or publish this publication, in any form, in any media or by any means, without the prior written permission of Maxphotonics, except as allowed under applicable copyright laws. Permitted copies shall bear the same copyright and proprietary notices that were contained on the original version.

Maxphotonics believes that the information provided is accurate and reliable; however Maxphotonics makes no warranty, representation, expression or implication that this document can be used as reference in other occasions. Furthermore, Maxphotonics does not assume responsibility for any infringement of patents or other rights of third parties due to use of the information contained in this document. Maxphotonics shall not be liable for errors contained in this document or for direct or indirect damages of relevant equipment.

Maxphotonics and the Maxphotonics Logo are registered trademarks of Maxphotonics Co., Ltd., and the Logo does not break any regulations of Trademark law. Maxphotonics grants no rights for patent or other intellectual property mentioned herein.

All information contained in this document is subject to change and revision without notice.



Maxphotonics Co.,Ltd.

Address: Maxphotonics Industrial Park, 3rd Furong Road,
Furong Industrial Area, Shajing, Baoan, Shenzhen, China.518125

E-Mail: info@maxphotonics.com

<http://en.maxphotonics.com>

Subject to change without notice. © Maxphotonics Co., Ltd.

Preface

Thank you for using the MFSC Series CW fiber laser from Maxphotonics. We compile this document for you in order that the laser is used and maintained properly. Due to the limited level of the writers, coupled with time constraints, there are some careless mistakes in this document, your understanding and suggestion to help us make an improvement will be much appreciated. Thank you again for using Maxphotonics' products.

Please take time to read and understand this User's Guide and familiarize yourself with the operating and maintenance instructions before you use the product. We strongly recommend that the operator read the Section 2 titled "Safety Information" prior to operating the product.

This User's Guide should stay with the product to provide you and all future users and owners of the product with important operating, safety and other information.

We identify the parts to which you need to pay special attention in the document with underscore. Please notice those information to prevent the unnecessary damages.

Company Profile

Found in 2004, Maxphotonics is one of the first fiber laser manufacturers in China. It is also the first in China to realize independent intellectual property rights and vertical integration in the core technologies of fiber lasers and optical devices. One of the national high-tech enterprises. Maxphotonics has developed into an internationally renowned laser manufacturer that develops, manufactures and sells fiber lasers and core optical components. It is the second largest domestic fiber laser manufacturer in the domestic market.

Maxphotonics specializes in the research, development, production and sales of fiber lasers, including pulsed fiber lasers, continuous fiber lasers and direct diode lasers. It also implements pump sources, combiners, fiber gratings, isolators, laser output heads, and stripping. Optical devices such as molds, acousto-optic modulators, and pattern matchers are produced autonomously. Products are widely used in marking, engraving, cutting, drilling, cladding, welding, surface treatment, rapid prototyping and additive manufacturing processes.

More informations, please visit our website:

<http://en.maxphotonics.com>

Chapter 1 Characteristic Description	5
Chapter 2 General Safety Information	6
1-Safety Conventions	6
2-Laser Protection	7
3-Reference Standard	8
4-General Safety Instructions	9
5-Additional Safety Information	14
Chapter 3 Product Description	15
1-Features.....	15
2-Module Configuration	15
3-Laser Module Designation Codes	16
4-Certification	16
5-Front Panel Description	16
6-Back Panel Description	16
7-Optical Output Terminal	17
Chapter 4 Specification	18
1-Optical Characteristic Parameters	18
2-General Characteristic Parameters	18
3-Water Cooling Condition.....	19
4-LOE&QBH Water Cooling Condition	20
5-Installation Environment Requirements	21
6-Structural Layout	22

Chapter 5 Operation Guide.....	23
1-Notice	23
2-Electrical Power Connection	23
3-Extension Interface	24
4-Start Step	26
5-Module Description	27
6-Software Description	28
7-Error Listing	33
Chapter 6 Service and Maintenance	38
1-Maintenance Instructions	38
2-Appearance Inspection	39
3-Cleaning Procedures	41
4-LOE Cutting Head Installationand Precautions	45
Chapter 7 Disassembly Guide	47
1-Unpacking Steps	47
2-Packing List	51
Chapter 8 Service and Maintenance	52
1-Maintenance Notes	52
2-Service Statements	53
Chapter 9 Warranty Statements	55
1-General Clauses	55
2-Warranty Limitations	55

Chapter 1

Characteristic Description

MFSC Series CW Fiber Laser products provide a wide range of wavelength from 1060nm to 1100nm. The lasers are water-cooled and maintenance-free and with a wall plug efficiency of more than 33% and deliver high efficiency, high reliability and high performance.

Maxphotonics' MFSC Series CW Fiber Laser Series are Class 4 laser products and are designed and tested with safety. By following this User Guide and applying sound laser safety practices, it will be a safe and reliable device.

Laser light exhibits unique characteristics that may pose safety hazards. Therefore, the laser light can't be normally associated with other light sources, and all operators and people near the laser must be aware of these special hazards.

In order to ensure the safe operation and optimal performance of the product, please follow all warnings and safety instructions in this guide during process of operation, maintenance and service and do not disassemble the device.



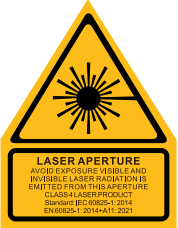

There are no serviceable parts, equipment or assemblies associated with this product for user. Lasers of unauthorized disassembly shall not be subject to warranty.

Chapter 2

General Safety Information

1-Safety Conventions

All safety warning symbols during operating process of the laser include:

SYMBOLS	DESCRIPTION
	WARNING: Refers to a potential Electrical Hazard to human body. It requires a procedure that, if not correctly followed, may result in bodily harm to you and/or others. Do not proceed beyond the WARNING sign until you completely understand and meet the required conditions.
	CAUTION: Refers to a potential hazard on product. It requires a procedure that, if not correctly followed, may result in damage to the product or components. In order to ensure normal use of equipment, do not violate the requirement of the CAUTION sign.
	WARNING: Refers to a potential Laser Hazard.The symbol represents laser radiation. The symbol is pasted on laser output end.
	CAUTION: The symbol contains details on laser power output and wavelength; reminds users to avoid direct or scattered radiation exposure to eyes or skin.

NO SYMBOL	IMPORTANT: Refers to any information regarding the operation of the product. Please do not overlook this information.
-----------	---

NOTE :

☉ This device is classified as a high power Class IV laser instrument. It may emit up to 20KW average power from 1060nm to 1100nm. This level of light may cause damage to the eye and skin. Laser safety eyewear is not provided with this instrument, but must be worn at all times while the laser is operational. Use appropriate laser safety eyewear when operating this device.

Caution: The user is cautioned that changes or modifications not expressly approved by the party responsible for compliance could void the user's authority to operate the equipment.

This device complies with Part 15 of the FCC Rules. Operation is subject to the following two conditions: (1) this device may not cause harmful interference, and (2) this device must accept any interference received, including interference that may cause undesired operation.

NOTE: This equipment has been tested and found to comply with the limits for a Class B digital device, pursuant to Part 15 of the FCC Rules. These limits are designed to provide reasonable protection against harmful interference in a residential installation. This equipment generates, uses and can radiate radio frequency energy and, if not installed and used in accordance with the instructions, may cause harmful interference to radio communications. However, there is no guarantee that interference will not occur in a particular installation.

If this equipment does cause harmful interference to radio or television reception, which can be determined by turning the equipment off and on, the user is encouraged to try to correct the interference by one or more of the following measures:

- Reorient or relocate the receiving antenna.
- Increase the separation between the equipment and receiver.
- Connect the equipment into an outlet on a circuit different from that to which the receiver is connected.
- Consult the dealer or an experienced radio/TV technician for help.

FCC Radiation Exposure Statement:

This equipment complies with FCC radiation exposure limits set forth for an uncontrolled environment. This equipment should be installed and operated with a minimum distance of 20cm between the radiator and your body.

This transmitter must not be co-located or operating in conjunction with any other antenna or transmitter.

2-Laser Protection

1.Laser Protection Requirements

You must wear the safety protective glasses while operating the laser, and rationally select the safety protective glasses according to the lasing wavelength of the laser. If the device is a tunable laser or Raman product, it emits light over a range of wavelengths and the end user should confirm the laser safety eyewear used protects against light emitted by the device over its entire range of wavelength.

2.Laser Protective Equipment Suppliers

Maxphotonics recommends material or equipments provided by following laser protective equipment suppliers for you, including LaserVision USA, Kentek Corporation, Rochwell Laser Industries, etc. All the supplier information is provided by Maxphotonics only for the convenience to use, so Maxphotonics assumes no responsibility for any problem caused by using the products of abovementioned suppliers.

3-Reference Standard

Electromagnetic Compatibility Emission:

EN IEC 61000-6-4:2019

CISPR 16-2-1

CISPR 16-2-3

Anti-interference Performance on Electromagnetic Compatibility:

EN IEC 61000-6-2:2019

EN 61000-4-2:2009

EN 61000-4-3:2020

EN 61000-4-4:2012

EN 61000-4-5:2014+A1:2017

EN 61000-4-6:2014

EN 61000-4-11:2020

Laser Security:

EN 60825-1:2014+A11:2021

CDRH 21 CFR 1040.10

Electrical System Safety:

EN 60204-1:2018

NOTE:

- ◎ Performances of Maxphotonics MFSC laser meet the CE EMC certification requirements, the EMC requirements specified in "EMC Directive" of European market. Comply with the "EMC" standard EN 61000-6-4 emission and EN 61000-6-2 anti-interference requirements.
- ◎ In accordance with relevant national standards and requirements, the laser must be classified according to its output power and laser wavelength. All MFSC-Series laser products with high power belongs to Class 4 products (according to section J,1040.10 (d) of Part II , 21 CFR).
- ◎ According to the standards of EU, the equipment belongs to Class 4 instrument (according to article 9, EN 60825-1).

4-General Safety Instructions

1.Specular Reflection

There are often numerous secondary laser beams produced at various angles in the output port of the laser. These divergent beams are produced when the primary beam of laser reflects off a smooth surface, and they are called specular reflections. Although these secondary beams may be less powerful than the total power emitted from the primary beam, the intensity may be great enough to cause damage to the eyes and skin as well as surface of materials.

WARNING:

- ◎ You must exercise caution to avoid/minimize specular reflections as these laser radiations are invisible!

2.Safety Instructions of Accessories

The photosensitive elements integrated in laser-related optical accessories may be damaged by laser exposure, such as: video cameras, photomultipliers, and photodiodes. Attention should be paid to related device protection.

WARNING :

© The Maxphotonics MFSC laser light is strong enough to cut or weld metal, burn skin, clothing and paint. In addition, this light can ignite volatile substances such as alcohol, gasoline, ether and other solvents. During the operating process, the flammable materials around the laser must be isolated.

3.Optical Operating Instructions

We strongly recommend that you read the following procedures before operating the laser:

- 1.Never look directly into the laser output port when the power is turned on.
- 2.Avoid positioning the laser and all optical output components at eye level.
- 3.Equip with laser beam casing.
4. Make sure to remove the tail cover of the laser output head before the laser is turned on, otherwise it will cause irreversible damage to the laser fiber output head.
- 5.Ensure that all personal protective equipment is suitable for the output power and wavelength range of the laser.
- 6.Use the laser in a room with access controlled by door interlocks. Post warning signs. Limit the safety areas to operate the laser.
- 7.Please do not operate the laser in darkened environments.
- 8.Do not turn on the laser without an optical coupling fiber or an optical output connector.
- 9.Carry out commissioning, calibration and focusing at low output power and then increase the output power gradually when the calibrating and focusing work is done.
- 10.Do not install or detach cutting heads or collimators when the laser is active.
- 11.Make sure that the laser is shut down and the power is off before you install

or detach cutting heads or collimators.

12.If the equipment is operated in a manner not specified in this document, the protection devices and performance of the equipment may be impaired and the warranty will be voided.

CAUTION:

◎ The output of the laser is delivered through a lens with an anti-reflection coating. If the backward-stage light path of your laser has the optical lens, please strictly inspect the lens of the output head and the backward- stage lens of the laser, and ensure that there is no dust and any other impurity on the lens. Please note that any macroscopic attachment may cause extreme damage to lens or burn the laser or any backward-stage light path equipment.

◎ For cleaning instructions of the lens, please refer to the "Optical Fiber Connector Inspection and Cleaning Guide".

◎ Hot or molten pieces of metal may be produced when the laser is under operation. Exercise caution if debris is produced in operation.

◎ When you carry out commissioning and calibration of the laser output, you must set the laser output at low power level and then gradually increase the output power during checking the quality of the light spot emitted from the laser via an infrared viewer.

WARNING:

◎ Make sure that the individual protective equipment meets the output power and wavelength range of the laser.

◎ Never look directly into the optical fiber or the collimator, and make sure you wear the safety protective glasses in each operation.

4.Electrical Operating Instructions

We strongly recommend that you read the following procedures before operating

the laser:

- 1.The power supply voltage of the laser equipment is three-phase alternating current 360-440VAC, 3P+PE. The laser equipment needs to be properly grounded during installation and installation. The external cables of the cabinet must be placed in metal trunking or metal pipes during installation. Pay attention to the safety of electricity during use to prevent electric shock injury .
- 2.When disassembling the laser, turned off the power first . If electrical injury occurs, corrective measures should be taken to prevent secondary injury. The correct treatment process: turn off the power, release the personnel safely, call help, and accompany the injured.
- 3.The equipment does not have any part which can be maintained by operators, and all the maintenance operations must be finished by the professionals of Maxphotonics.
- 4.To prevent electrical shock, do not remove enclosure, detach the laser without permission and damage the relevant signs. Any product with unauthorized dismounting shall not be subject to warranty.

WARNING:

⊙ The input voltage of the laser is triple-phase AC current (360-440VAC, 3P+3E), which may cause risk of electric shock. All the relevant cables and connection wires have potential hazards.

5.Environment Conditions and Precautions

For ensuring the safety of the laser working area, suitable enclosures shall be applied, including but not limited the laser safety signs and the interlocking devices. Corresponding operators must be trained and examined and know the normal safety specifications for operating the laser.Meanwhile, it is important that the output components shall not be installed at eye level.

Because of interaction of the laser and the metal material, the radiation of high-level ultraviolet light or visible light may be produced. Make sure that the laser

is provided with the protective cover to prevent the eyes or other parts of human bodies from damage by radiation.

We recommend that you comply with the following operating measures to prolong the service life of the laser:

1. In order to ensure a good operating environment of the laser, reduce the risk of condensation, reduce the probability of failure, and prolong the service life. It is strongly recommended to configure the air-conditioned room of the laser in advance. The air-conditioned room should be spacious enough to facilitate internal maintenance. It can guarantee the minimum free space around the laser is 1.0m. If space is limited, the air-conditioned room needs to be designed to be easy to remove and install.

2. It is necessary to provide sufficient installation space for the air-cooled water cooler, and to ensure sufficient water cooler exhaust. The minimum free space of the top of the air-cooled water-cooled fan is 1.5m, and the side plate of the air filter is 1m away from the wall.

3. It is forbidden to place the air-cooled water-cooled machine in the laser air-conditioned room. Because the air-cooled water-cooling machine discharges a lot of hot air, the room temperature will rise rapidly, and finally the heat dissipation will be poor, causing the water-cooling machine high-pressure alarm and laser condensation alarm.

4. Do not expose the laser to a high moisture environment.

5. The device is equipped with cooling fans. Make sure that there is sufficient airflow to cool the laser, any objects or debris that cover the ventilation holes must be removed at all times.

6. Operation at higher temperature will accelerate aging, increase threshold current and lower slope efficiency. If the device is overheated, stop operations and contact Maxphotonics.

7. Ensure that the work surface is properly vented. There may be gases, sparks and debris generated from the interaction between the laser and the work surface, and they could pose additional safety hazard.

CAUTION :

- ⊙ The device may be damaged with incautious operation.

5-Additional Safety Information

For additional information regarding Laser Safety, please refer to the list below:

Laser Institute of America(LIA)

13501 Ingenuity Drive, Suite 128

Orlando,Florida 32826

Phone:407 380 1553,Fax: 407 380 5588

Toll Free:1 800 34 LASER

American National Standards Institute

ANSI Z136.1, American National Standard for the Safe Use of Lasers

(Available through LIA)

International Electro-technical Commission

IEC 60825-1, Edition 1.2

Center for Devices and Radiological Health

21 CFR 1040.10 - Performance Standards for Light-Emitting Products

US Department of Labor - OSHA

Publication 8-1.7 - Guidelines for Laser Safety and Hazard Assessment.

Laser Safety Equipment

Laurin Publishing

Laser safety equipment and Buyer's Guides

Chapter 3

Product Description

1-Features

MFSC Series CW fiber lasers are compact and efficient high power lasers developed for industrial application. They are mainly applied to the fields of welding, cutting, brazing, etc.

Main Features:

- 1.High-quality laser output
- 2.High power, high efficiency
- 3.High reliability, long service life
- 4.Compact, rugged package
- 5.Extending programming interface

Applications:

- 1.Industrial applications
- 2.Scientific research

2-Module Configuration

Maxphotonics offers many configurable Modules. This manual will give complete instructions for all Modules, Please refer to chapter 5 "Operation Guide".

3-Laser Module Designation Codes

M - F - S - C - XXX - XXXX 1 - 2 - 3 - 4 - 5 - 6		
1	Manufacturer's code	M means Maxphotonics
2	Gain media of the laser	F means Fiber Laser
3	Laser Module	S stands for Single-Mode (single mode)
4	Laser state	C means Continuously Wave
5	Maximum output power	XXXX W means the maximum output power of the laser
6	Additional message	Can be null

4 - Certification

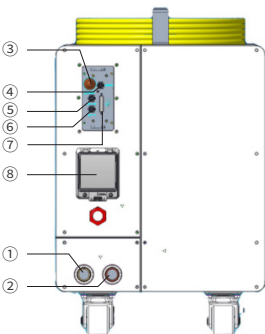
Maxphotonics certifies that this equipment has been thoroughly tested and inspected and meets published specifications prior to shipping. Upon receiving your equipment, check whether the packaging and accessories have been damaged in transit. If damage is apparent, please contact Maxphotonics immediately.

5- Front Panel Description



NO.	Items	Function Description
①	KEY SWITCH	Power switch of laser
②	EMERGENCY STOP	Emergency stop
③	START	Start laser (on-off signal of hardware)

6-Back Panel Description



NO.	Items	Function Description
①	WATER IN	Laser water-cooled inlet (1.25 in.)
②	WATER OUT	Laser water-cooled outlet (1.25 in.)
③	BLUETOOTH	Bluetooth communication
④	ETHERNET	Network communication interface
⑤	ECAT OUT	BUS OUT (optional)
⑥	ECAT IN	Bus in (optional)
⑦	CTRL	Laser external control interface
⑧	AC 380V	AC AC on-off

7-Optical Output Terminal

1.Optical Output Head

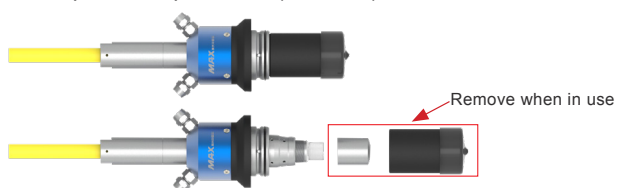
The optical output head come with a protective window that can be replaced if damaged. Make sure that the black end cap of the QBH head is removed prior to use and is usually arranged with the laser.

Please refer to 6“Fiber Connector Inspection and Cleaning Guide” about the cleaning method.

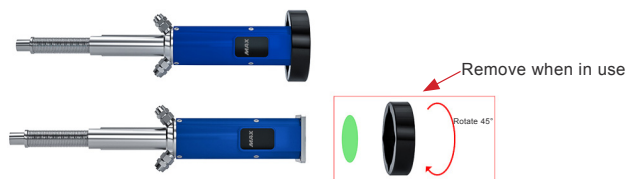
Optical Output Head (QBH)



Optical Output Head (LOE2.0)



Optical Output Head (LOE3.1)



Chapter 4

Specification

1-Optical Characteristic Parameters

Characteristics	Test conditions	Min.	Nom.	Max.	Unit
Operation Module	CW/Modulated				
Polarization	Random				
MFSC-12000M(G6.1)	100% CW Output Power		12000		W
Tuning range of output power		10		100	%
Emission wavelength	100% CW	1070	1080	1090	nm
Spectrum width(3dB)	100% CW		5	7	nm
Short-term power instability	100% CW >1h		±1	±2	%
Long-term power instability	100% CW >24h		±2	±3	%
Beam quality (BPP)	Output fiber core diameter 50um	1.4		2.2	mm x mrad
	Output fiber core diameter 100um	3		3.8	
Laser switching ON time			150	200	μs
Laser switching OFF time			150	200	μs
Modulation rate	100% Output			5	KHz
Red guide laser power	100% Output	200			uW
Feeding fiber cable length			25		m
Feeding fiber core size	100 (50/150/200 can be customized)				
Feeding fiber cable bending radius		200			mm

2-General Characteristic Parameters

Characteristics	Test conditions	Min.	Nom.	Max.	Unit
Operating voltage		360	400	440	VAC
Input Power	MFSC-12000 100% output			40	KW
Operating ambient temperature		10	25	40	°C
Operating ambient relative humidity		10		80	%
Cooling method	Water-cooling				

Cooling Medium	Pure water (above 0°C) / glycol antifreeze (below 0°C)				
Storage temperature		-10	25	60	°C
Dimensions	Width*Depth*Height=520*1050*600 (excluding casters/warning lights, etc.)				mm
Weight	MFSC-12000M(G6.1)	260(±10)			kg

3-Water Cooling Condition

No.	Characteristics	Min.		Unit
1	Cooling Method	Water Cooling		
2	Water Temperature	Summer 24	Winter 20	°C
3	Hydraulic pressure	≥4		bar
4	MFSC-12000M(G6.1) Water Flow Rate for laser cooling	100		L/min
5	MFSC-12000M(G6.1) Chiller Rated refrigeration capacity	28		KW

CAUTION :

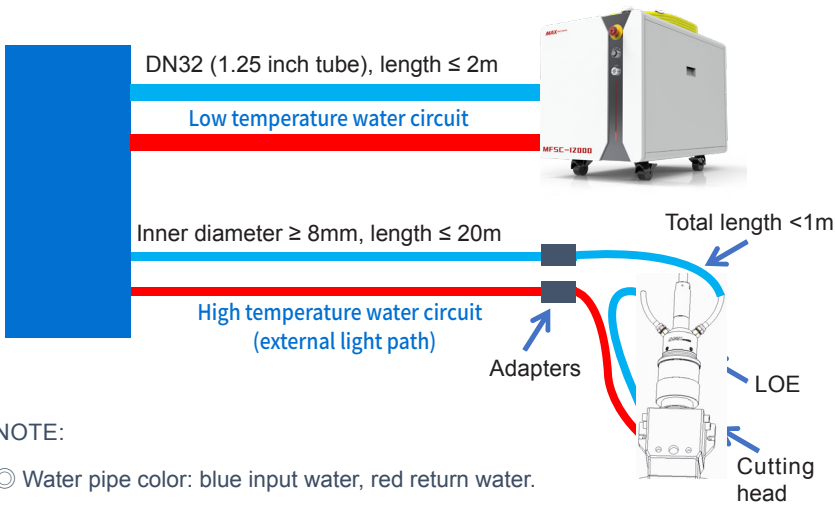
- ◎ The Chiller needs to meet the requirements of the above table under the conditions of a circulating temperature of 40 ° C and an outlet temperature of 22 ° C.
- ◎ The above recommended water pressure requires the pressure drop of the main line $\Delta p \leq 0.5\text{bar}$. If this value is exceeded, the main circuit water pressure should be increased accordingly.
- ◎ Cooling water and filter element, need to be replaced once a month, Winter(refers to the low temperature environment of 0 · C and below) before the comingof the cooling water should be replaced with a volume ratio of 20% glycol solution(recommended brand Klein), and every two months, it is strictly prohibited to addexcessive, low thermal conductivity of antifreeze, excessive addition is easy tocause poor heat dissipation. After the end of winter, it is necessary to replace theantifreeze back to distilled water and replace the filter element, and restore themaintenance frequency of once a month.
- ◎ When the ambient temperature of the equipment is lower than -15C, the watercooler with double system function must be used. and the cooling svstem must rununinterrupted.

4-LOE&QBH Water Cooling Condition

NO	Cooling Method	Water pipe size requirement	Water Flow Rate (L/min)	Hydraulic pressure (bar)	Cooling Temperature (°C)
QBH	Water cooling				28-30
LOE		Φ8	≥4	≥4	

CAUTION :

- ◎ The inner diameter of the external light path pipeline is greater than or equal to 8mm and the length is ≤20m;
- ◎ The total length of the Φ6 pipeline connecting QBH or the Φ8 pipeline connecting LOE from the external light path is ≤1m;
- ◎ QBH / LOE and cutting head connected in series
- ◎ For the QBH scheme, the above recommended external light path water pressure requires the pressure drop of the cutting head $\Delta p \leq 1.5$ bar. If this value is exceeded, the external light path water pressure should be increased accordingly.
- ◎ For the LOE scheme, the above recommended external light path water pressure requires the pressure drop of the cutting head $\Delta p \leq 3$ bar. If this value is exceeded, the water pressure of the external light path needs to be increased accordingly.



NOTE:

- ◎ Water pipe color: blue input water, red return water.

5-Installation Environment Requirements

- 1.The ambient air cleanliness grade requirement for optical fiber output head installation: 1000 or more stringent grade. Suggestions for Configuration of Standard Purification Workbench;
- 2.laser working environment temperature:10°C—40°C;
- 3.laser working environment humidity:10%-85%;
- 4.Avoid the condensation environment,the specific control standards are as follows:

环境温度、相对湿度、露点对照表														
相对湿度%	30	35	40	45	50	55	60	65	70	75	80	85	90	95
环境温度(℃)	露点 Td (℃)													
10	-7.0	-5.0	-3.0	-1.3	0.0	1.5	2.5	3.6	4.8	5.8	6.7	7.6	8.4	9.2
11	-6.5	-4.0	-2.0	-0.5	1.0	2.5	3.5	4.8	5.8	6.7	7.7	8.6	9.4	10.2
12	-6.0	-3.0	-1.0	0.5	2.0	3.3	4.4	5.5	6.7	7.7	8.7	9.5	10.9	11.2
13	-4.5	-2.0	-0.2	1.4	2.8	4.1	5.3	6.6	7.7	8.7	9.6	10.5	11.4	12.2
14	-3.2	-1.0	0.7	2.2	3.5	5.1	6.4	7.5	8.6	9.6	10.6	11.5	12.4	13.2
15	-2.3	-0.3	1.5	3.1	4.6	6.0	7.3	8.4	9.6	10.6	11.6	12.5	13.4	14.2
16	-1.3	0.5	2.4	4.0	5.6	7.0	8.3	9.5	10.6	11.6	12.6	13.4	14.3	15.2
17	-0.5	1.5	3.2	5.0	6.5	8.0	9.2	10.2	11.5	12.5	13.5	14.5	15.3	16.2
18	0.2	2.3	4.0	5.8	7.4	9.0	10.2	11.3	12.5	13.5	14.5	15.4	16.4	17.2
19	1.0	3.2	5.0	7.2	8.4	9.8	11.0	12.2	13.4	14.5	15.4	16.5	17.3	18.2
20	2.0	4.0	6.0	7.8	9.4	10.7	12.0	13.2	14.4	15.4	16.5	17.4	18.3	19.2
21	2.8	5.0	7.0	8.6	10.2	11.0	12.9	14.2	15.3	16.4	17.4	18.4	19.3	20.2
22	3.5	5.8	7.8	9.5	11.0	12.5	13.8	15.2	16.3	17.3	18.4	19.4	20.3	21.2
23	4.4	6.8	8.7	10.4	12.0	13.5	14.8	16.2	17.3	18.4	19.4	20.4	21.3	22.2
24	5.3	7.7	9.7	11.4	13.0	14.5	15.8	17.0	18.2	19.3	20.4	21.4	22.3	23.1
25	6.2	8.6	10.5	12.3	14.0	15.4	16.8	18.0	19.1	20.3	21.3	22.3	23.2	23.9
26	7.0	9.4	11.4	13.2	14.8	16.3	17.7	19.0	20.1	21.2	22.3	23.3	24.2	25.1
27	8.0	10.3	12.2	14.0	15.8	17.3	18.7	19.9	21.1	22.2	23.2	24.3	25.2	26.1
28	8.8	11.2	13.2	15.0	16.7	18.0	19.6	20.9	22.0	23.0	24.2	25.2	26.2	27.1
29	9.7	12.0	14.0	15.9	17.6	19.2	20.5	21.7	23.0	24.1	25.2	26.2	27.2	28.1
30	10.5	12.9	14.9	16.8	18.5	20.0	21.4	22.8	23.9	25.1	26.2	27.2	28.2	29.1
31	11.4	13.8	15.9	17.8	19.4	20.9	22.4	23.6	24.8	26.0	26.9	28.2	29.2	30.1
32	12.2	14.7	16.8	18.6	20.3	21.9	23.3	24.6	25.8	27.0	28.1	29.2	30.1	31.1
33	13.0	15.6	17.6	19.6	21.3	22.9	24.2	25.6	26.8	28.0	29.0	30.1	32.1	32.1
34	13.9	16.5	18.6	20.5	22.2	23.8	25.2	26.5	27.7	29.0	29.5	31.1	32.1	33.1
35	14.9	17.4	19.5	21.4	23.0	24.6	26.2	27.5	28.7	29.9	31.0	32.1	33.1	34.1
36	15.7	18.1	20.3	22.2	24.0	25.0	27.0	28.4	29.0	30.9	32.0	33.1	34.1	35.2
37	16.6	19.2	21.2	23.2	24.9	26.5	27.9	29.5	30.7	31.8	33.0	34.1	35.2	36.2
38	17.5	19.9	22.0	23.9	25.8	27.4	28.9	30.3	31.5	32.0	33.9	35.1	36.0	37.0
39	18.1	20.8	23.0	24.9	26.6	28.3	29.8	31.2	32.5	33.8	34.9	36.2	36.8	38.1
40	19.2	21.6	23.8	25.8	27.6	29.2	30.7	32.1	33.5	34.7	35.8	36.8	38.1	39.1

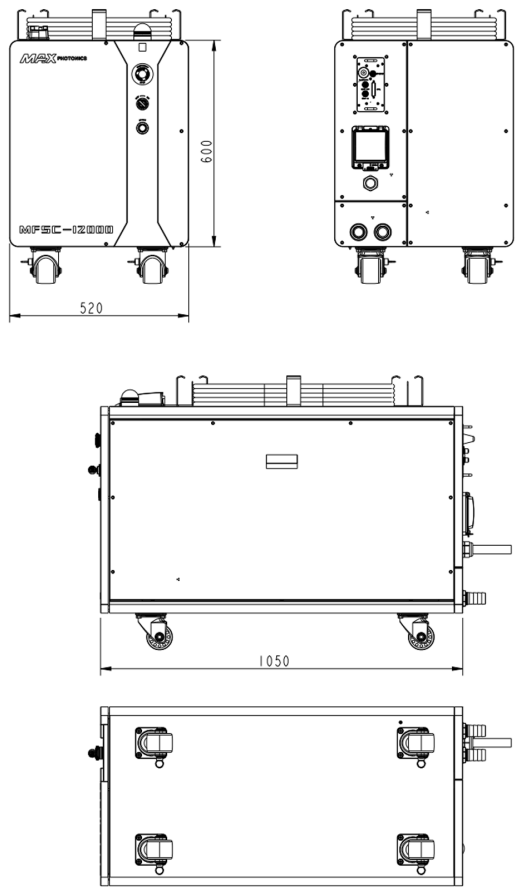
NOTE :

◎ In order to ensure a good operating environment of the laser, to reduce the probability of failure due to condensation. We recommend to prepare an air-conditioned room for the laser, so that the temperature in the air-conditioned room is $\leq 28^{\circ}\text{C}$, and the relative humidity is $\leq 50\%$. The water cooler should be placed in a different space from the laser. It is forbidden to place the water cooler in the air-conditioned room;

◎ The laser head works at circulating temperature. In order to avoid condensation on the laser head, it is necessary to adjust the temperature of the cooling water of the external light path to room temperature. It is forbidden to cool the laser head with low-temperature cooling water.

6-Structural Layout

Laser Views. (Unit: mm)



Chapter 5

Operation Guide

1-Notice

CAUTION:

- ◎ Please refer to Chapter 4 "Specification" for proper electrical power.
- ◎ Please refer to Chapter 2 "General Safety Information" for inspecting whether the configuration environment of peripheral work of the laser meets the requirements.

2-Electrical Power Connection

The power supply voltage of the optical device is 360-440VAC for three-phase AC. Make sure that the live and ground wires are correctly connected according to the line mark. Poor contact of the ground wire may cause potential damage to the laser.

For ensuring the safety feature, Maxphotonics recommends you connect circuit breaker (air switch) and Stabilizer in series between the power supply unit and the laser. This electric power shall be in close proximity to the power supply unit of the equipment and can be easily disconnected.

If you have questions about wiring, please check the table below to determine your electrical specifications.

Machine Type/W	Voltage /VAC	Rated current /A	Circuit breaker /A	Stabilizer /kW
MFSC-12000	400V±10%,3P+PE	59	100	≥ 50

3-Extension Interface

WARNING:

© The output of laser control interface is not insulation from hazardous live part, it may result electric shock. Please make sure the equipment is power off when perform connection. Please make sure addition insulation shall be provided to prevent against electric shock after installation.

Laser CTRL interface is a high quality 55P multi-core air interface that provides a variety of signals for functional control of the laser, as described below:



CTRL INTERFACE PIN	WIRE COLOR	FUNCTION DESCRIPTION	CHINESE LOGO	SIGNAL DESCRIPTION
33	Orange-black	EX_LOCK_-	互锁 -	Dry contact input ON/OFF (ON-normal, off-fault)
34	Orange	EX_LOCK_+	互锁 +	
8	Yellowish black	CONTROL-	外部出光 -	Dry contact input ON/OFF (ON- light out, OFF- no light out)
23	Yellow	CONTROL+	外部出光 +	
39	Brownish white	ERROR2	故障输出 2	Dry contact output (ON- fault, OFF- normal)
40	Brown	ERROR1	故障输出 1	
29	Green	EX_DA+	0-10V 输 +	Control laser output power (Analog signal 1V-10%, 10V-100%)
14	Greenish white	EX_DA-	0-10V 输入 -	
2	Black and white	EX_M-	调制输入 -	HIGH:20VDC≤V≤24VDC LOW:0VDC≤V≤5VDC 5mA≤I≤15mA
17	Black	EX_M+	调制输入 +	
4	Red and white	EX_EN-	使能输入 -	HIGH:20VDC≤V≤24VDC LOW:0VDC≤V≤5VDC 5mA≤I≤15mA (Enable :HIGH Disable :LOW)
19	Red	EX_EN+	使能输入 +	
37	Light blue black	EMGERNCY1_INPUT-	急停输入 1-	HIGH:20VDC≤V≤24VDC LOW:0VDC≤V≤5VDC 5mA≤I≤15mA (Scram :HIGH Normal :LOW)
38	Light blue	EMGERNCY1_INPUT+	急停输入 1+	

4-Start Step

WARNING:

- ⊙ Make sure that all the electrical connections (including cooling water connections) are connected prior to use. All the connectors must be held steady with screws if possible.
- ⊙ NEVER look directly into the output fiber and make sure that you wear the laser safety goggles when operating the product.
- ⊙ Make sure all power is removed from the laser when wiring.

Starting procedures are as follows:

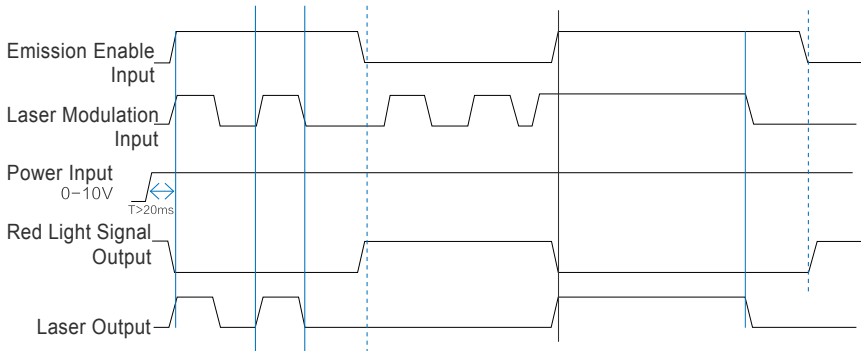
1. Start the chiller;
2. Remove the end cap of the collimator;
3. Check that the end face of the collimator is clean and free of debris;
4. Ensure that the emergency stop switch is turned on;
5. Set the MAIN SWITCH to the ON position;
6. Set the key switch on the front panel to the "ON" position;
7. Press the START button on the front panel.
8. Air conditioner: The system automatically controls the switch of the air conditioner. The air conditioner will start to cool after 3 minutes. If the air conditioner is not cooled after 3 minutes, the air conditioner is faulty (if the laser is matched with an air conditioner).

5-Module Description

The working Modules of the laser are as follows:

- 1.Continuous Module: the emitted light is continuous and can be used for cutting;
- 2.Pulse Module: The emitted light is pulsed. When the pulse frequency is greater than a certain value, the actual application is used to control the average output power of the laser (pulse width adjustment, when the external control, the modulation signal corresponds to the Module);
- 3.External control: specific parameter settings through the board software interface.

External Control Signal Timing:



Timing specific description: Power analog quantity 0-10V signal is provided to the laser at least 20mS ahead of time, modulation and enable high level signal input, red light off, laser output. Enable high level signal reduction, red light output, laser off.

6-Software Description

(1) Enter "Chuangxin Laser Official Website"->"Download Center"->"Install Software", and download "G6 Series-Software Installation Guide", "NET4.6", "G6-Series-n.n.n.n". (The version is updated from time to time, subject to the official website announcement without notice.)

URL: <http://en.maxphotonics.com/En/Software.html>

MAX PHOTONICS		Product	Service	Applications	About Us	Contact Us	CN / EN	Q
Air Cooling Monitoring Software 1.0.2.24 (Not Including.NET)				↓	FiberLaser_G2_Series (1.0.0.11)			↓
USB-RS232 Driver (UNITEK)				↓	NET4.6			↓
Max G2 Series - 1.0.0.11				↓	MaxMarking_Release_2.7.12_0225			↓
Maxphotonics G3 Series Laser Software Installation Guide V1.3				↓	G3-Series MD (Maxphotonics) -en - 1.0.0.86 (Diode Laser)			↓
G3-Series -en - 1.0.1.38				↓	G6_APP_10.3.4_20240417_01.apk			↓
G6-Series - 1.0.0.17				↓				

(2) Install the runtime environment (NET4.6). (You do not need to install NET4.6 on Win10 systems or systems that already have .NET 4.6 installed).



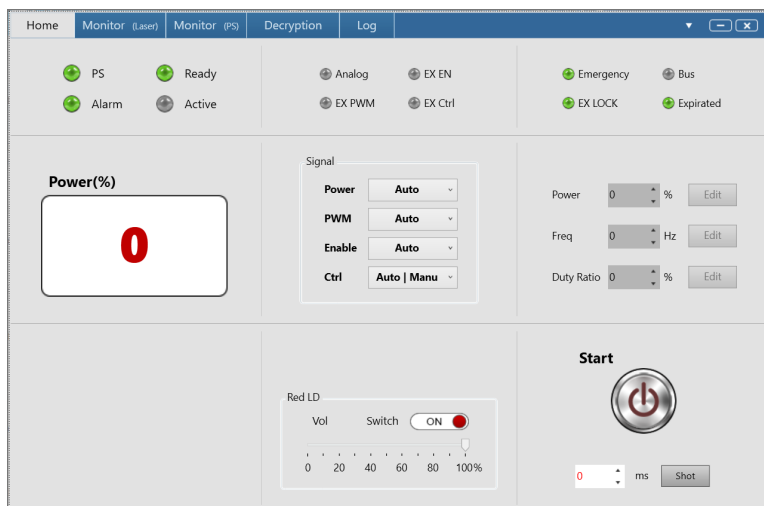
(3) Install the monitoring software (G6-Series-n.n.n.n) and a shortcut to “G6-Series” will appear on your desktop.

(4) Locate the EtherNet communication interface on the back panel of the laser, use the network cable to connect it to the computer, and power on the laser.

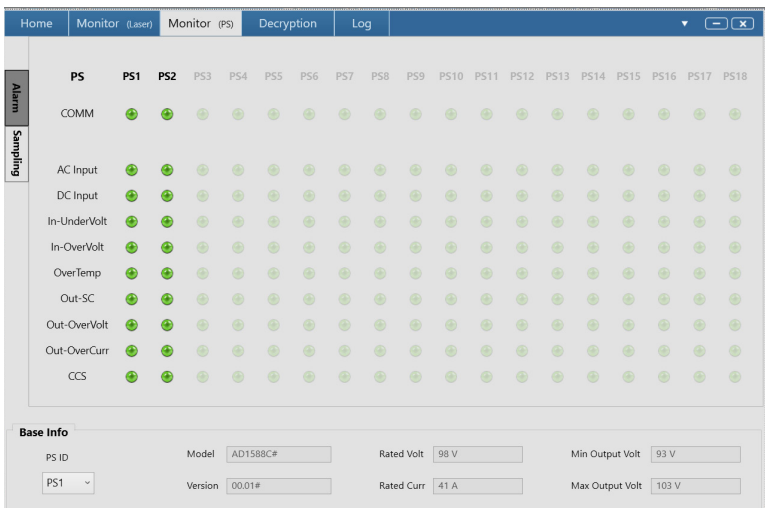
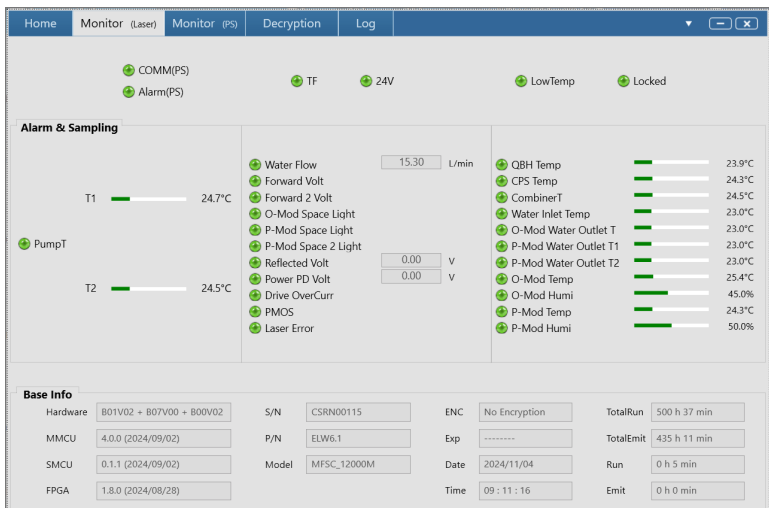
(5) Double click the desktop “G6-Series” shortcut to open the monitoring software and enter the following connection interface. Enter the IP address of the laser (default is 192.168.0.178), click the “Login” button and try to connect with the laser.

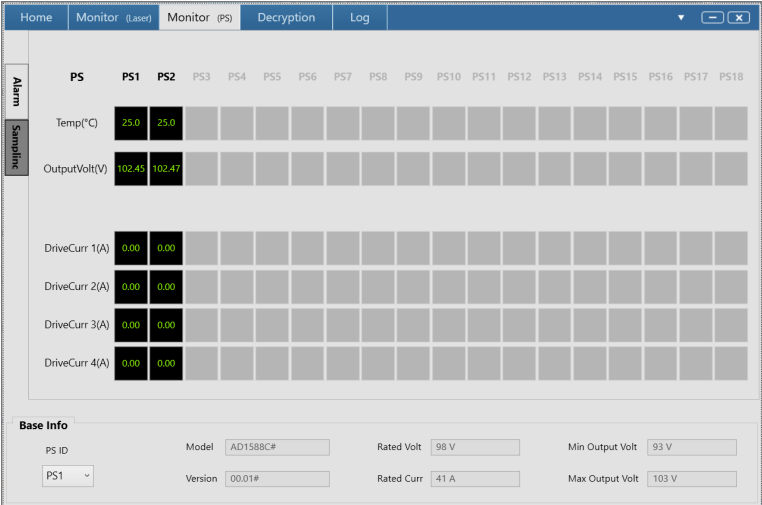


(6) If the laser has been powered up and the model can be matched with the monitoring software, it will enter the following main interface.

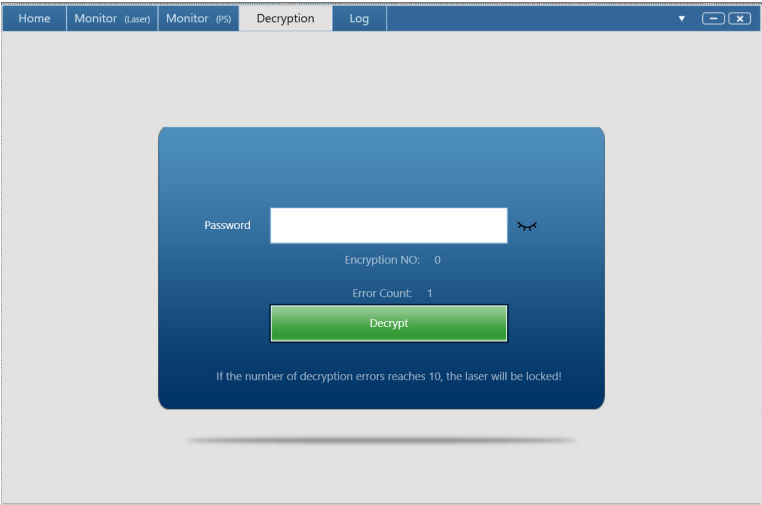


(7) Monitor page.





(8) Decryption page.



(9) Log page.

Home	Monitor (Laser)	Monitor (PS)	Decryption	Log		
NO.	Local Date	L-TM	User	Type	ItemName	Value
1	2024/11/04	09:12:42		State_Feedback	COMM	ON
2	2024/11/04	09:12:43		State_Feedback	Ready	ON
3	2024/11/04	09:12:43		State_Feedback	Active	OFF
4	2024/11/04	09:12:43		State_Feedback	PS	ON
5	2024/11/04	09:12:43		State_Feedback	Start	OFF
6	2024/11/04	09:12:43		State_Feedback	24V	ON
7	2024/11/04	09:12:43		State_Feedback	Manu EN	OFF

7-Error Listing

The fault alarm points set by the laser include:

NO	Fault name	Protective measures / possible causes / solutions
1	Forward light PD alarm	<p>Protective measures: Stop supplying power to the main power and turned off the laser.</p> <p>Possible causes: The laser inside does not detect the laser .</p> <p>Solutions: 1.Restart the laser without laser ,check for red light. If there is no red light, please Contact Maxphotonics customer service; 2.If there is red light, please check if the relevant module can turn on the laser. Check whether the module DC power supply and voltage output is normal</p>
2	Super-strong backlight alarm	<p>Protection measures: The main power supply is off. Turn off the laser.</p> <p>Possible causes: The PD inside the laser cannot detect the laser.</p> <p>The solution: 1. Restart the laser without turning on the laser and check whether there is red light. If there is no red light, please contact Chuangxin customer service staff; 2. If there is red light, please check whether the relevant module can turn on the laser. Check whether the DC switch voltage output of the module is normal.</p>
3	Water flow alarm	<p>Protective measures: Stop supplying power to the main power and turned off the laser.</p> <p>Possible causes: The water-cooling machine is abnormal,results in the decrease of water flow.</p> <p>Solutions: Turn off the laser, check if the water cooler flow rate and water temperature are normal, if the water pipe is blocked. After the inspection is completed, restart the laser and the laser returns to normal.</p>

4	Spatial light PD alarm	<p>Protective measures: The main power supply is off. Turn off the laser.</p> <p>Possible causes: The PD inside the laser detects spatial astigmatism.</p> <p>The solution: 1. Please contact Chuangxin customer service staff</p>
5	Super-strong backlight alarm	<p>Protective measures: Stop supplying power to the main power and turned off the laser.</p> <p>Possible causes: The beam combining module detects that the return light is too strong.</p> <p>Solutions: 1.Check the laser focus position; 2.Check if the material is placed horizontally; 3.Check if the material is ultra high-reflective material; 4.Check if the material thickness exceeds the standard and cannot cut through the alarm; 5.Turn off the laser, pause for 3-5 minutes, restart the laser, and turn on the laser .</p>
6	Drive overcurrent alarm	<p>Protection measures: The main power supply is off. Turn off the laser.</p> <p>Possible causes: Single module pump source operating current exceeds the maximum limit.</p> <p>The solution: 1. Restart the exciter after it is closed and check whether it is normal. If normal, normal use; 2. If it is still the maximum current alarm, the MOS tube may break down in the single module, and the laser needs to be turned off immediately. Contact Chuangxin customer service staff.</p>

7	PMOS alarm	<p>Protection measures: The main power supply is off. Turn off the laser.</p> <p>Possible causes: The internal drive circuit of the switching power supply is damaged.</p> <p>The solution: 1. Restart the exciter after it is closed and check whether it is normal. If normal, normal use; 2. If the PMOS alarm is still generated, the MOS tube driven by the switching power supply in the single module may break down, and the laser needs to be turned off immediately. Contact Chuangxin customer service staff.</p>
8	Outgoing light anomaly	<p>Protection measures: The main power supply is off. Turn off the laser.</p> <p>Possible causes: Switching power channel current on feedback not detected.</p> <p>The solution: 1. Shut down the laser and restart it to check whether it is normal. If normal, normal use; 2. If the light is still abnormal, contact Chuangxin customer service staff.</p>
9	T1 pump temperature alarm	<p>Protection measures: The main power supply is off. Turn off the laser.</p> <p>Possible causes: The pump source temperature of the laser module is too high, and the temperature alarm is generated.</p> <p>The solution: Turn off the laser, check whether the flow rate and water temperature of the chiller are normal, and whether the water pipe is blocked. After the check is complete, restart the laser and the laser recovers. If you can not return to normal contact Chuangxin customer service staff.</p>

10	T2 pump temperature alarm	<p>Protection measures: The main power supply is off. Turn off the laser.</p> <p>Possible causes: The pump source temperature of the laser module is too high, and the temperature alarm is generated.</p> <p>The solution: Turn off the laser, check whether the flow rate and water temperature of the chiller are normal, and whether the water pipe is blocked. After the check is complete, restart the laser and the laser recovers. If you can not return to normal contact Chuangxin customer service staff.</p>
11	QBH installation alarm	<p>Protection measures: The main power supply is off. Turn off the laser.</p> <p>Possible causes: The contact of the laser QBH output head is not in good contact with the contact of the cutting head.</p> <p>The solution: Turn off the laser, check the laser QBH output head and cutting head, and reinstall.</p>
12	QBH temperature alarm	<p>Protection measures: The main power supply is off. Turn off the laser.</p> <p>Possible causes: The temperature of the laser QBH output head is too high, and the temperature alarm is generated.</p> <p>The solution: Turn off the laser, check whether the flow rate and water temperature of the chiller are normal, and whether the water pipe is blocked. After the check is complete, restart the laser and the laser recovers. If you can not return to normal contact Chuangxin customer service staff.</p>

13	Scram alarm	<p>Protection measures: The main power supply is off. Turn off the laser.</p> <p>Possible causes: The scram switch is pressed.</p> <p>The solution: The emergency stop switch is restored to the normal state and the laser is restarted.</p>
14	Stripper temperature alarm	<p>Protection measures: The main power supply is off. Turn off the laser.</p> <p>Possible causes: The chiller is abnormal, resulting in reduced water flow or increased water temperature.</p> <p>The solution: Turn off the laser, check whether the flow rate and water temperature of the chiller are normal, and whether the water pipe is blocked. After the check is complete, restart the laser and the laser recovers. If you can not return to normal contact Chuangxin customer service staff.</p>
15	Buncher temperature alarm	<p>Protection measures: The main power supply is off. Turn off the laser.</p> <p>Possible causes: The chiller is abnormal, resulting in reduced water flow or increased water temperature.</p> <p>The solution: Turn off the laser, check whether the flow rate and water temperature of the chiller are normal, and whether the water pipe is blocked. After the check is complete, restart the laser and the laser recovers. If you can not return to normal contact Chuangxin customer service staff.</p>

16	Intake temperature alarm	<p>Protection measures: The main power supply is off. Turn off the laser.</p> <p>Possible causes: The chiller is abnormal, causing the water temperature to rise.</p> <p>The solution: Turn off the laser and check whether the water temperature of the chiller is normal. After the check is complete, restart the laser and the laser recovers. If you can not return to normal contact Chuangxin customer service staff.</p>
17	Outlet temperature 1 alarm	<p>Protection measures: The main power supply is off. Turn off the laser.</p> <p>Possible causes: The chiller is abnormal, resulting in reduced water flow or increased water temperature.</p> <p>The solution: Turn off the laser, check whether the flow rate and water temperature of the chiller are normal, and whether the water pipe is blocked. After the check is complete, restart the laser and the laser recovers. If you can not return to normal contact Chuangxin customer service staff.</p>
18	Outlet temperature 2 alarm	<p>Protection measures: The main power supply is off. Turn off the laser.</p> <p>Possible causes: The chiller is abnormal, resulting in reduced water flow or increased water temperature.</p> <p>The solution: Turn off the laser, check whether the flow rate and water temperature of the chiller are normal, and whether the water pipe is blocked. After the check is complete, restart the laser and the laser recovers. If you can not return to normal contact Chuangxin customer service staff.</p>

19	Abnormal communication alarm	<p>Protection measures: The main power supply is off. Turn off the laser.</p> <p>Possible causes: The communication line has no signal transmission with the main module.</p> <p>The solution: 1. Check whether the signal cables are loose; 2. Check whether it can be powered on and started normally, whether there is red light, and whether the voltage output of the auxiliary power supply works normally</p>
20	Power alarm	<p>Protection measures: The main power supply is off. Turn off the laser.</p> <p>Possible causes: Laser overcurrent alarm or abnormal signal triggers alarm.</p> <p>The solution: 2. Shut down the laser and restart it to check whether it is normal. If normal, normal use; 2. If it cannot be recovered, the switching power supply may be abnormal. You need to turn off the laser immediately and contact the customer service staff of Chuangxin.</p>
21	Low temperature alarm	<p>Protection measures: The main power supply is off. Turn off the laser.</p> <p>Possible causes: The chiller is abnormal, resulting in low water temperature.</p> <p>The solution: Turn off the laser and check whether the water temperature of the chiller is normal. After the check is complete, restart the laser and the laser recovers.</p>

NOTE:

© All laser alarm information, there will be corresponding display reminder on the monitoring software: please pay attention! If you have any questions, please contact our customer service staff.

Chapter 6

Service and Maintenance

1-Maintenance Instructions

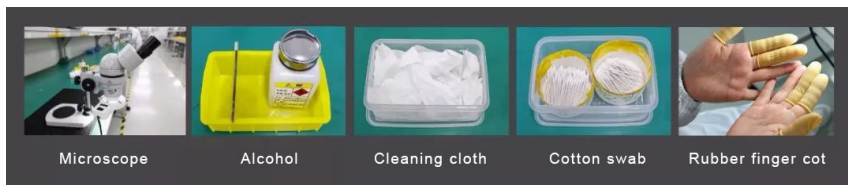
Before connect the laser fiber connector, it is necessary to check the dust, dirt adhesion and damage of the end face. Using dirty or unclean fibre optic connectors can cause serious damage to the laser. Maxphotonics does not take any responsibility for laser damage caused by using unclean optical fiber connectors. If the optical fiber connector is tampered with privately, the equipment will no longer in guarantee.

For cleaning a fiber connector you need the following materials:

1. Powder-free rubber gloves or fingerstall;
2. Lint free optical cleaning wipes and/or swabs;



3. Ahydrous ethanol (Optical level, purity >99.5%);
4. Compressed air (no oil, no water), or a wooden rod rolled with a double-layer adhesive tape;
5. Scale microscope (can be enlarged by 20 times and above).



IMPORTANT:

© It is imperative that you wear powder-free rubber gloves during this cleaning procedure! It is hereby stated that damage to the fiber connector can occur due to mishandling, the use of incorrect cleaning procedures, or chemicals for cleaning. This is not covered by the Maxphotonics' warranty.

2-Appearance Inspection

1.Environmental requirements

LOE cleaning and installing cutting head shall be carried out in the clean room purification workbench, the dust-free grade requires 1000 grades, and the reference cleansing workbench as follow:



2.Operating Procedures

- 1.Switch off the laser power, and place the key switch on position of "OFF";
- 2.Rotate the black protective sleeve of the connector clockwise, place it under

a 20x microscope and make the surface to be inspected clear, and check whether the appearance of the quartz rod meets the appearance standard. (reference 2.2.5);

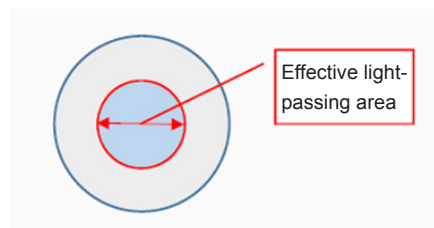
3.If there is no dust particles, or the dust particles meet the appearance standards, put the black protective sleeve to return the connector;

4.If it is found that the dust particles exceed the appearance standard requirements, then clean them according to the requirements of step 3;

5.Appearance standards are shown in the table below:

Power	Quartz rod	
	Effective light-passing area (within $\phi 3\text{mm}$)	Non-effective light-passing area (outside $\phi 3\text{mm}$)
4000W-20KW	Pitting diameter: Not allowed Scratch width: Not allowed	Pitting diameter: ≤ 0.1 Scratch width: ≤ 0.005
2000W-4000W	Pitting diameter: ≤ 0.05 Scratch width: ≤ 0.002	Pitting diameter: ≤ 0.1 Scratch width: ≤ 0.005
Below 2000W (single Module)	Pitting diameter: ≤ 0.1 Scratch width: ≤ 0.005	Pitting diameter: ≤ 0.1 Scratch width: ≤ 0.01

Unit: mm



Schematic diagram of effective light passing area

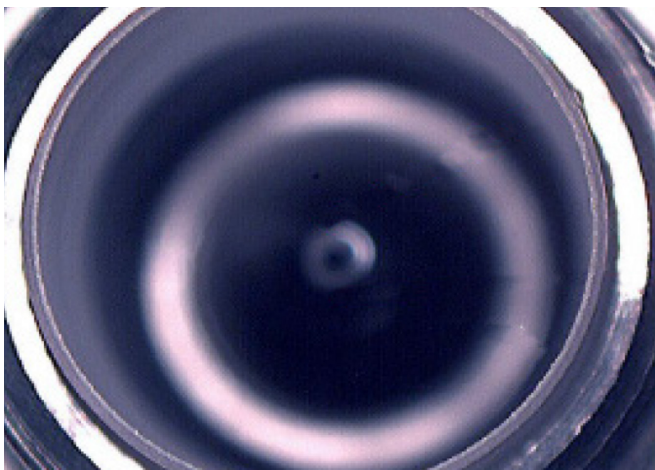
3-Cleaning Procedures

1.Switch off the laser power, and place the key switch on position of "OFF"

2.Cleaning protective lens with swabs

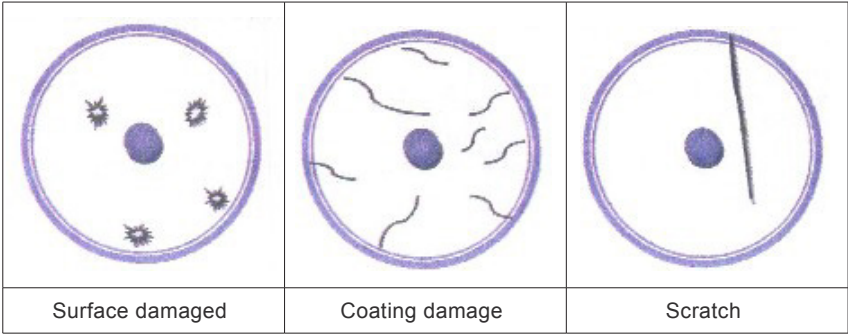
1.Rotate the black protective sleeve of the connector clockwise, place the inner or outer surface under a microscope of 20 times and make it clear. After careful observation, determine the specific position of the dust particles, open the alcohol bottle cap and gently press the alcohol bottle mouth makes a small amount of alcohol ooze out, completely immerse the round cotton swab in alcohol, and then lightly swab the cotton swab to remove excess alcohol. Use a cotton swab to wipe the dust particles straight in the direction of the operator's body. The force should be light. After each wiping, the cotton swab can be rotated 180° and then wiped with the other side. After wiping for 2 times, the cotton swab is scrapped. Note that it is not allowed to circle. Or wipe back and forth to prevent dust particles from contaminating other areas or cotton swabs directly scratching the surface.After all cleaning, it is necessary to observe under the microscope again whether the surface is clean.

Actual image of the fiber



Quartz rod

Endface may be damaged



2.Check the inner wall of the protective guide tube if there is obvious foreign matter with the microscope. If the foreign matter can be cleaned with a double-sided glue stick, then use a cotton swab to wash the alcohol for further cleaning. After the protective guide tube is dried, directly put on the connector.

3.Cleaning method for quartz rods

If find that the internal quartz rod is dusty or dirty, you can open the lens to clean it. The specific steps are as follows:

1.Rotate the black protective sleeve, dust cap and protective lens at clockwise, first wipe the circumference and thread surface of the entire connector lens piece with an optical cleaning cloth and alcohol;



Remove the fiber protection sleeve and inner protective cover

2.Put the quartz rod under a 20x microscope and make it clear. After careful observation, determine the specific location of the dust particles and clean according to the method of 3.2.1. For dust particles on the side of the fused quartz rod, use a pointed cotton swab to clean along the circumferential surface. After all cleaning, confirm under the microscope whether it is clean, including the chamfered area. Finally, wrap it on the table with a non-woven fabric, and then continue other work to prevent the dust from contaminating the end face and side of the fused silica rod again;



Cotton swab to wipe quartz rod

3.Along the grain of the surface of the metal part, gently rotate the lens piece back to the metal part and confirm that it is in place. Place the black protective sleeve on the connector.



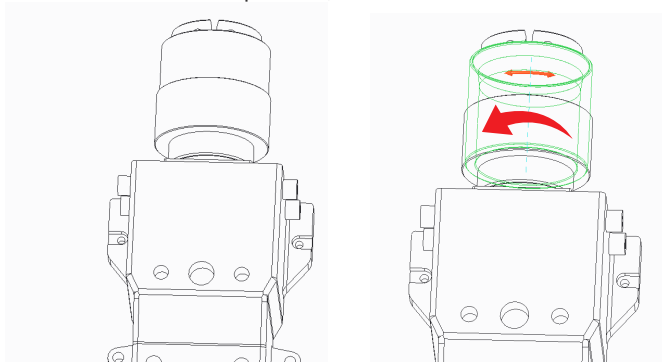
IMPOTANT:

- ◎ Do not reuse a lint-free optical wipe or swab;
- ◎ Do not touch the protective lens of the fiber connector;
- ◎ Do not blow directly, or else new dirty will be brought;
- ◎ Do not touch the tip of the cleaning swab with your fingers;
- ◎ Cleaning is necessary before place the protective cover and sleeve;
- ◎ Never blow air directly at the surface, because you could imbed contaminants into the surface. Always blow across the surface;
- ◎ If the fiber connector could not be installed in optical system immediately, please cover it with the protective cap cleaned with compressed air;
- ◎ Be sure to operate in a Class 1000 clean environment.

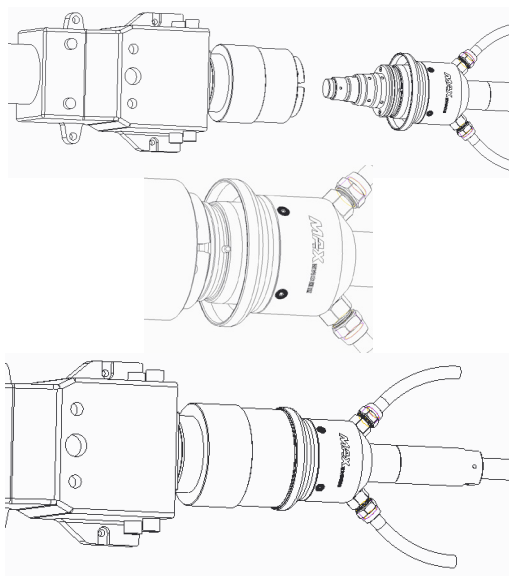
4-LOE Cutting Head Installationand Precautions

1.Installation steps

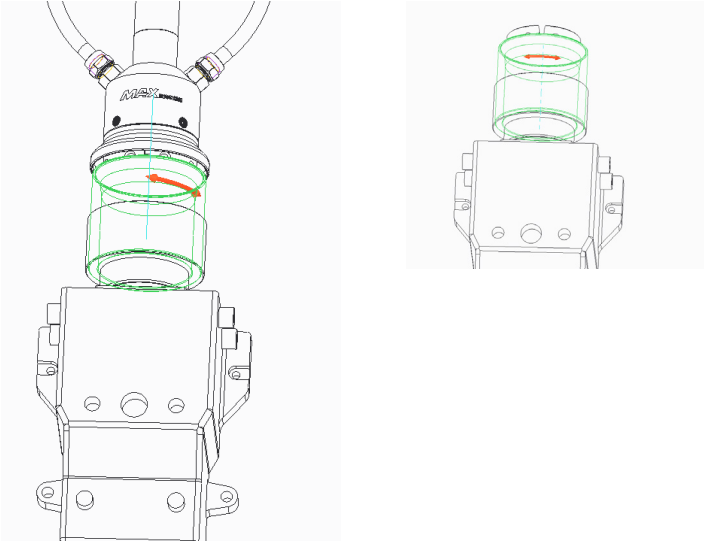
1.The LOE female head is fixed to the cutting head, and the LOE female head is rotated clockwise to the fixed position;



2.Insert the cleaned LOE male into the corresponding female fixed slot position. To avoid dust pollution on the LOE end face and the inside of the cutting head, please ensure that the LOE and the cutting head are in the horizontal state;



3. Turn the male clockwise to a fixed position.



2.IMPORTANT

- ◎ LOE male head lens must be removed before inserting the female head;
- ◎ After removing the lens, it is necessary to clean the quartz rod and the thread of the fixed lens member;
- ◎ LOE male insert female head must be centered to prevent damage to the quartz rod;
- ◎ The entire operation process needs to be performed in a 100-level dust-free purification environment.

Chapter 7


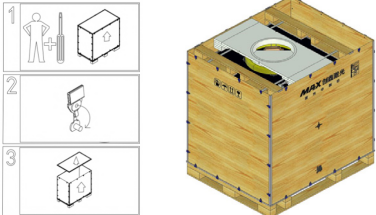
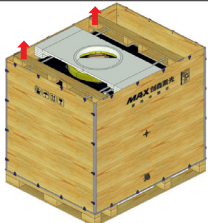
Disassembly Guide

1-Unpacking Steps

The laser belongs to the precise valuables, so Maxphotonics recommends the following steps to unpack the packing box. Packing list is attached to the box. After unpacking, please check the accessories according to the Packing List. Please also save all the items after unpacking to prevent future transportation or storage.

The following picture shows the steps to remove the box:

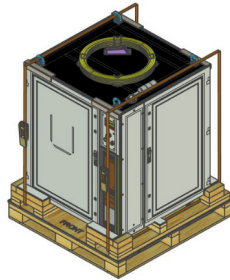
Packing box disassembly and assembly

<p>Place the box containing the laser equipment in a stable place, such as a flat floor or a large platform.</p>	
<p>We recommend that you use a flat-blade screwdriver to pry the plastic clip, remove the plastic clasp, and then remove the top cover.</p>	
<p>Lift the top beam up and remove it, taking care not to scratch the top cable.</p>	

Remove the top foam and pick up the accessory.

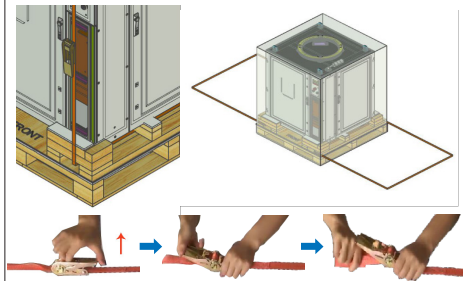


Follow the second step to remove the four side panels, in the order of long edges -> short sides -> another short side -> another long side.

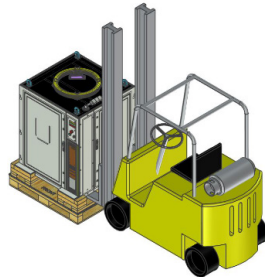


Remove the tensioning strap and PE bag, pay attention to tightening direction of the ratchet and tightening the strap opening method:

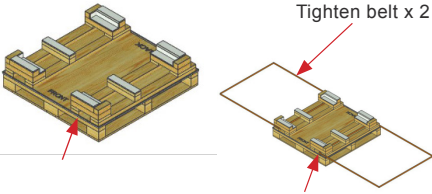
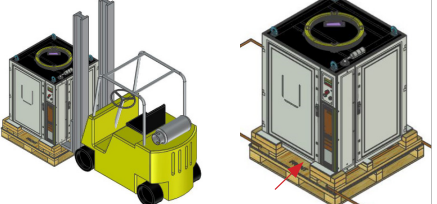
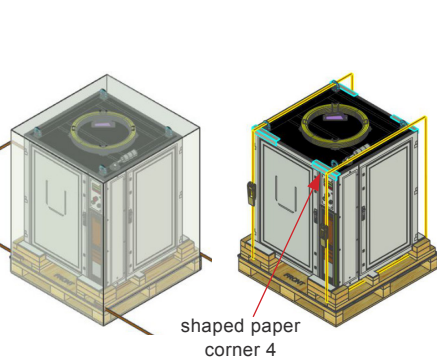
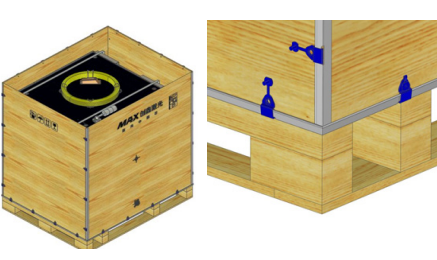
1. Press and hold the stop circlip
2. Rotating and tightening the gallows 180°
3. Pull out the straps forcefully

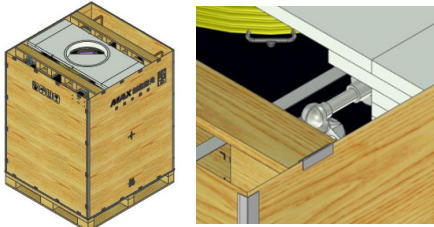



Please use forklift or crane to lift the laser and move to the designated position.



When customers need to repack, please refer to the following steps.

<p>Put the pallet and clean it up, then place the tensioning strap and pass the tensioning strap through the bottom slots on both sides of the pallet.</p>	
<p>Use a forklift to fork the product to a certain height, move the pallet to the bottom, and position the product slowly. When placing the product, pay attention to the direction of the product as shown.</p>	
<p>Put on the PE bag, tighten the tensioning belt, and separate the paper corners between the product and the tensioning belt. There are 4 paper corners. Pay attention to the use of the tension band:</p> <ol style="list-style-type: none"> 1. Locate the slot shaft position and pass the strap from below the slot shaft; 2. Tighten through the strap and turn back into the slot axis position; 3. The straps are worn out and Tightened the straps; 4. Shake the handle back and forth to tighten the strap. 	
<p>Assemble the side panel, insert the plastic buckle into the slot and fasten it. The assembly sequence is: long side -> short side -> another short side -> another long side.</p>	

<p>Assemble the top support and the top foam, taking care that the top support is to hang the side panels.</p>	
<p>Assemble the top cover and fasten all the plastic buckles.</p>	

NOTE:

- ◎ If you find any damage to the outer packaging or internal components after received the product, please contact Maxphotonics or your local representative immediately.
- ◎ The laser is equipped with a dehumidifier. When the ambient temperature and humidity are too high, the laser will have a process to prevent dew condensation and dehumidification (about 30 minutes). The condensed water will flow out from the bottom outlet of the cabinet.
- ◎ When turned off the laser, the water cooler should also be turned off to prevent condensation from occurring due to excessive temperature difference.

RECOMMENDATION:

Change the operating temperature or humidity of the laser to keep the laser away from the dew point. (such as installing the laser in an air-conditioned room)

2-Packing List

No.	Names of fittings	Description	Unit	Quantity
1	Fiber-optic laser	MFSC-XXX	Pc	1
2	Cable		BLT	1
3	Key		Pc	2
4	Clamp		Pc	2
5	Client external control adapter cable		BLT	1
6	External control line		BLT	1
7	Continuous external control interface insurance board PCBA		Pc	1
8	Superfine dust-free cloth (2*2)		Pc	6
9	QBH water pipe sample tube		BLT	1
10	Laser water pipe sample tube		BLT	1
11	Pointed cotton swab		Bag	1
12	Round head cotton swab		Bag	1

Chapter 8

Service and Maintenance

1-Maintenance Notes

CAUTION :

- ◎ No operator serviceable parts inside. Refer all servicing to qualified Maxphotonics personnel.
- ◎ For ensuring that the repairs or replacement within the warranty scope can be carried out, and perfectly maintaining your interests, please submit application to the Maxphotonics or the local representative after finding the faults. Upon receiving our authorization, you need to pack the product in a suitable package and return it.
- ◎ You should keep the proof when finding any damage after receiving the product, so as to claim the rights to shippers.

IMPORTANT :

- ◎ Do not send any product to Maxphotonics without RMA, otherwise it will be returned according to rejection. The resulting losses are borne by the customer; in order to ensure the timely processing of the returning machine, the customer must ship the faulty machine to the designated address of Maxphotonics.

Address: Maxphotonics Industrial Park, 3rd Furong Road,

Furong Industrial Area, Shajing, Bao'an,

Shenzhen, China.518125

Contact: Customer Service

Receiving phone: 18682447838

◎ If the product is beyond the warranty period or the warranty scope, customers shall be responsible for the repairing cost. The specific charges include spare parts costs, labor service fees, and travel, accommodation and other expenses incurred by on-site services.

CHANGE :

◎ We have the rights to change any design or structure of our product, and the information is subject to change without notice.

2-Service Statements

More problems regarding the safety, set-up, operation or maintenance please reading this "User Guide" carefully and following the operation steps strictly. Please call the Customer Service Department for other questions.

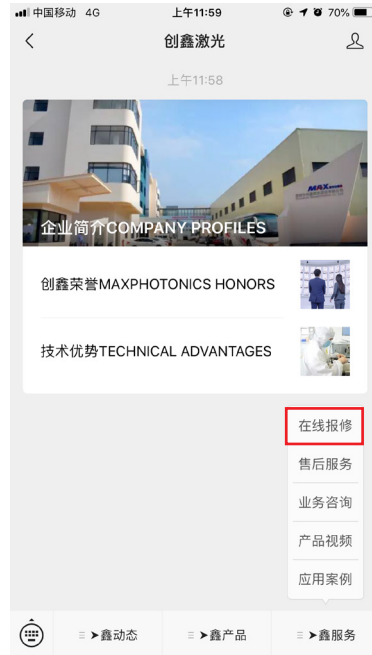
1. Fault repair and consultation methods

(1) 7X24 hour service hotline: 400-900-9588; 1 business consultation; -> 2 after-sales service; -> 3 pre-sales support; -> 4 complaints suggestions; -> 5 front desk consultation;

Another set: South China technical consultation line :18682446878

East China, North China Technical Advisory Line: 18682447838

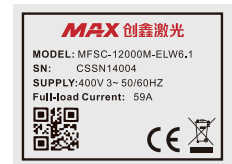
(2) Online registration of Wechat public account: pay attention to Maxphotonics Wechat public account, choose online repair;



(3) Log in to Maxphotonics official website: www.maxphotonics.com, click on the service -- select online repair.

2. Customer repair and consultation need to prepare information in advance

- (1) Laser Module PN: as shown on the right;
- (2) Laser SN code: as shown on the right;
- (3) Description of fault;
- (4) Customer company name, address, contact person and contact number.



The questions you have feedback will be followed up by the technical support team after confirmation by Maxphotonics Customer Service. If your problem is still not resolved after communicating with the technical support team, you may need to send the product back to Maxphotonics for further investigation.

Chapter 9

Warranty Statements

1-General Clauses

Maxphotonics Co.,Ltd. carries out warranty for any defect of the product caused by its material and production technology within the warranty period agreed in contract, and ensures that its product meet the relevant quality and specification requirements specified in the document under normal use condition.

Maxphotonics Co.,Ltd. rationally determines to repair or replace the products with faults caused by its material or production technology within the warranty period, and repairs or replacement of all the products within the warranty scope are carried out according to the rest of the warranty period of primary products.

2-Warranty Limitations

Under the following circumstances, the products, parts (including the fiber connectors) or equipment are not within the warranty scope:

- (1) Tampered, opened, detached or reconstructed by personnel outside Maxphotonics;
- (2) Damaged from misuse, neglect or accident;
- (3) Used beyond the specification and technical requirements of the product;
- (4) Indirectly damaged from users' software or interfaces;
- (5) Improper installation or maintenance, or operating under conditions not included in this manual;

(6) The fittings and the fiber connectors are not included in the warranty scope.

Customers are obligated to understand the information above and operate according to the User Guide and specification, or the faults arising therefrom are not included in the warranty scope.

IMPORTANT:

- ◎ Within the warranty scope, purchasers must feed back within 31 days after finding the product defect.
- ◎ Maxphotonics does not grant any Third Party rights to repair or replace the parts, the equipment or other Maxphotonics products.