



## MFSC 2000C(G6.3) CW Fiber Laser Series

# USER GUIDE

# Copyright Notation

Copyright © Maxphotonics Co., Ltd ( here after referred to as Maxphotonics). All rights reserved. You may not copy, modify, transmit or publish this publication, in any form, in any media or by any means, without the prior written permission of Maxphotonics, except as allowed under applicable copyright laws. Permitted copies shall bear the same copyright and proprietary notices that were contained on the original version.

Maxphotonics believes that the information provided is accurate and reliable; however Maxphotonics makes no warranty, representation, expression or implication that this document can be used as reference in other occasions. Furthermore, Maxphotonics does not assume responsibility for any infringement of patents or other rights of third parties due to use of the information contained in this document. Maxphotonics shall not be liable for errors contained in this document or for direct or indirect damages of relevant equipment.

Maxphotonics and the Maxphotonics Logo are registered trademarks of Maxphotonics Co., Ltd., and the Logo does not break any regulations of Trademark law. Maxphotonics grants no rights for patent or other intellectual property mentioned herein.

All information contained in this document is subject to change and revision without notice.



---

**Maxphotonics Co.,Ltd.**

Address: Maxphotonics Industrial Park, 3rd Furong Road,  
Furong Industrial Area, Shajing, Baoan, Shenzhen, China.518125

E-Mail: [info@maxphotonics.com](mailto:info@maxphotonics.com)

<http://en.maxphotonics.com>

Subject to change without notice. © Maxphotonics Co., Ltd.

## Preface

Thank you for using the MFMC Series CW fiber laser from Maxphotonics. We compile this document for you in order that the laser is used and maintained properly. Due to the limited level of the writers, coupled with time constraints, there are some careless mistakes in this document, your understanding and suggestion to help us make an improvement will be much appreciated . Thank you again for using Maxphotonics' products.

Please take time to read and understand this User's Guide and familiarize yourself with the operating and maintenance instructions before you use the product. We strongly recommend that the operator read the Section 2 titled "Safety Information" prior to operating the product.

This User's Guide should stay with the product to provide you and all future users and owners of the product with important operating, safety and other information.

We identify the parts to which you need to pay special attention in the document with underscore. Please notice those information to prevent the unnecessary damages.

## Company Profile

Found in 2004, Maxphotonics is one of the first fiber laser manufacturers in China. It is also the first in China to realize independent intellectual property rights and vertical integration in the core technologies of fiber lasers and optical devices. One of the national high-tech enterprises. Maxphotonics has developed into an internationally renowned laser manufacturer that develops, manufactures and sells fiber lasers and core optical components. It is the second largest domestic fiber laser manufacturer in the domestic market.

Maxphotonics specializes in the research, development, production and sales of fiber lasers, including pulsed fiber lasers, continuous fiber lasers and direct diode lasers. It also implements pump sources, combiners, fiber gratings, isolators, laser output heads, and stripping. Optical devices such as molds, acousto-optic modulators, and pattern matchers are produced autonomously. Products are widely used in marking, engraving, cutting, drilling, cladding, welding, surface treatment, rapid prototyping and additive manufacturing processes.

More informations, please visit our website:

<http://en.maxphotonics.com>

<b>Company Profile .....</b>	<b>4</b>
<b>Chapter 1 Characteristic Description .....</b>	<b>7</b>
<b>Chapter 2 General Safety Information .....</b>	<b>8</b>
1-Safety Conventions .....	8
2-Laser Protection .....	10
3-Reference Standard .....	11
4-General Safety Instructions .....	12
5-Additional Safety Information .....	17
<b>Chapter 3 Product Description .....</b>	<b>18</b>
1-Features .....	18
2-Module Configuration .....	18
3-Laser Model Designation Codes .....	19
4-Certification .....	19
5-Front Panel Description .....	19
6-Back Panel Description .....	20
7-Optical Output Terminal .....	21
<b>Chapter 4 Specification .....</b>	<b>22</b>
1-Optical Characteristic Parameters .....	22
2-General Characteristic Parameters .....	23
3-Water Cooling Condition .....	23
4-QBH Water Cooling Condition .....	24
5-Installation Environment Requirements .....	25

6-Structural Layout .....	27
<b>Chapter 5 Disassembly Guide .....</b>	<b>29</b>
1-Disassembly Step .....	29
2-Packing List .....	30
<b>Chapter 6 Operation Guide .....</b>	<b>31</b>
1-Notice .....	31
2-Electrical Power Connection .....	31
3-Extension Interface .....	32
4-Fiber Connector Inspection and Cleaning Guide .....	36
5-Start Steps .....	40
6-Mode Description .....	40
7-Software Description .....	41
8-Error List .....	45
<b>Chapter 7 Service and Maintenance .....</b>	<b>47</b>
1-Maintenance Notes .....	47
2-Service Statements .....	48
<b>Chapter 8 Warranty Statements .....</b>	<b>49</b>
1-General Clauses .....	49
2-Warranty Limitations .....	49

# Chapter 1

## Characteristic Explain

MFSC 2000C (G6.3) CW Fiber Laser Series products provide a wide range of wavelength from 1060nm to 1100nm. The lasers are water-cooled and maintenance-free and with a wall plug efficiency of more than 30% and deliver high efficiency, high reliability and high performance.

Maxphotonics' MFSC 2000C (G6.3) CW Fiber Laser Series are Class 4 laser products and are designed and tested with safety. By following this User Guide and applying sound laser safety practices, it will be a safe and reliable device.

Laser light exhibits unique characteristics that may pose safety hazards. Therefore, the laser light can't be normally associated with other light sources, and all operators and people near the laser must be aware of these special hazards.

In order to ensure the safe operation and optimal performance of the product, please follow all warnings and safety instructions in this guide during process of operation, maintenance and service.



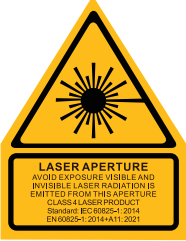

For ensuring the safety of operators, operators are urged not to open the equipment privately at all times. There are no user serviceable parts, equipment or assemblies associated with this product. Lasers of unauthorized disassembly shall not be subject to warranty.

# Chapter 2

## General Safety Information

### 1 -Safety Conventions

All safety warning symbols during operating process of the laser include:

SYMBOLS	DESCRIPTION
	<b>WARNING:</b> Refers to a potential Electrical Hazard to human body. It requires a procedure that, if not correctly followed, may result in bodily harm to you and/or others. Do not proceed beyond the WARNING sign until you completely understand and meet the required conditions.
	<b>CAUTION:</b> Refers to a potential hazard on product. It requires a procedure that, if not correctly followed, may result in damage to the product or components. In order to ensure normal use of equipment, do not violate the requirement of the CAUTION sign.
	<b>WARNING:</b> Refers to a potential Laser Hazard.The symbol represents laser radiation. The symbol is pasted on laser output end.
	<b>CAUTION:</b> The symbol contains details on laser power output and wavelength; reminds users to avoid direct or scattered radiation exposure to eyes or skin.



NO SYMBOL	IMPORTANT: Refers to any information regarding the operation of the product. Please do not overlook this information.
-----------	---

NOTE :

© Maxphotonics MFSC series fiber lasers, with wavelength range of 1060nm~1100 nm, are not in the visible light range, but these beams may cause irreversible damage to the retina and cornea. Maxphotonics recommends that you must wear qualified and safe protective glasses when operating the laser at any time.

Caution: The user is cautioned that changes or modifications not expressly approved by the party responsible for compliance could void the user's authority to operate the equipment.

This device complies with Part 15 of the FCC Rules. Operation is subject to the following two conditions: (1) this device may not cause harmful interference, and (2) this device must accept any interference received, including interference that may cause undesired operation.

NOTE: This equipment has been tested and found to comply with the limits for a Class B digital device, pursuant to Part 15 of the FCC Rules. These limits are designed to provide reasonable protection against harmful interference in a residential installation. This equipment generates, uses and can radiate radio frequency energy and, if not installed and used in accordance with the instructions, may cause harmful interference to radio communications. However, there is no guarantee that interference will not occur in a particular installation. If this equipment does cause harmful interference to radio or television reception, which can be determined by turning the equipment off and on, the

user is encouraged to try to correct the interference by one or more of the following measures:

- Reorient or relocate the receiving antenna.
- Increase the separation between the equipment and receiver.
- Connect the equipment into an outlet on a circuit different from that to which the receiver is connected.
- Consult the dealer or an experienced radio/TV technician for help.

### **FCC Radiation Exposure Statement:**

This equipment complies with FCC radiation exposure limits set forth for an uncontrolled environment. This equipment should be installed and operated with a minimum distance of 20cm between the radiator and your body.

This transmitter must not be co-located or operating in conjunction with any other antenna or transmitter.

## **2-Laser protection**

### **1.Laser Protection Requirements**

You must wear the safety protective glasses while operating the laser, and rationally select the safety protective glasses according to the lasing wavelength of the laser. If the device is a tunable laser or Raman product, it emits light over a range of wavelengths and the end user should confirm the laser safety eyewear used protects against light emitted by the device over its entire range of wavelength.

### **2.Laser Protective Equipment Suppliers**

Maxphotonics recommends material or equipments provided by following laser protective equipment suppliers for you, including LaserVision USA, Kentek Corporation, Rochwell Laser Industries, etc. All the supplier information is provided by Maxphotonics only for the convenience to use, so Maxphotonics assumes no responsibility for any problem caused by using the products of abovementioned suppliers.

### 3-Reference Standard

**Electromagnetic Compatibility Emission:**

EN IEC 61000-6-4:2019

CISPR 16-2-1

CISPR 16-2-3

**Anti-interference Performance on Electromagnetic Compatibility:**

EN IEC 61000-6-2:2019

EN 61000-4-2:2009

EN 61000-4-3:2020

EN 61000-4-4:2012

EN 61000-4-5:2014+A1:2017

EN 61000-4-6:2014

EN 61000-4-11:2020

## 4-General Safety Instructions

### 1. Specular Reflection

There are often numerous secondary laser beams produced at various angles in the output port of the laser. These divergent beams are produced when the primary beam of laser reflects off a smooth surface, and they are called specular reflections. Although these secondary beams may be less powerful than the total power emitted from the primary beam, the intensity may be great enough to cause damage to the eyes and skin as well as surface of materials.

#### WARNING:

© You must exercise caution to avoid/minimize specular reflections as these laser radiations are invisible!

### 2.Safety Instructions of Accessories

The photosensitive elements integrated in laser-related optical accessories may be damaged by laser exposure, such as video cameras, photomultiplier tubes, and photodiodes. Attention should be paid to related device protection.

#### WARNING:

© The Maxphotonics MFSC laser light is strong enough to cut or weld metal, burn skin, clothing and paint. In addition, this light can ignite volatile substances such as alcohol, gasoline, ether and other solvents. During the operating process, the flammable materials around the laser must be isolated.

### 3.Optical Operating Instructions

**We strongly recommend that you read the following procedures before operating the laser:**

- (1) Never look directly into the laser output port when the power is turned on.

- (2) Avoid positioning the laser and all optical output components at eye level.
- (3) Equip with laser beam casing.
- (4) Remove the end-cover before switch ON laser. Or else the output head will be damaged irreversibly.
- (5) Ensure that all personal protective equipment is suitable for the output power and wavelength range of the laser.
- (6) Use the laser in a room with access controlled by door interlocks. Post warning signs. Limit the safety areas to operate the laser.
- (7) Please do not operate laser in darkened environments.
- (8) Do not turn on the laser without an optical coupling fiber or the optical output connector.
- (9) Do not install or detach cutting heads or collimators when laser is active.
- (10) Carry out commissioning, calibration and focusing at low output power and then increase the output power gradually when the calibrating and focusing work is done.
- (11) If the equipment is operated in a manner not specified in this document, the protection devices and performance of the equipment may be impaired and the warranty will be voided.

**CAUTION :**

© The output of the laser is delivered through a lens with an anti-reflection coating. If the backward-stage light path of your laser has the optical lens, please strictly inspect the lens of the output head and the backward-stage lens of the laser, and ensure that there is no dust and any other impurity on the lens. Please note that any macroscopic attachment may cause extreme damage to lens or burn the laser or any backward-stage light path equipment.

- ◎ For cleaning instructions of the lens, please refer to the "Optical Fiber Connector Inspection and Cleaning Guide".
- ◎ Hot or molten pieces of metal may be produced when the laser is under operation. Exercise caution if debris is produced in operation.
- ◎ When implement commissioning and calibration of laser output, it's necessary to set the quality of the spot emitted from the laser at low power levels via an infrared viewer, and then gradually increase the output power.

**WARNING :**

- ◎ Make sure that the individual protective equipment meets the output power and wavelength range of the laser.
- ◎ Never look directly into the optical fiber or the collimator, and make sure you wear the safety protective glasses in each operation.

#### **4.Electrical Operating Instructions**

We strongly recommend that you read the following procedures before operating the laser:

- (1) Please ensure that the equipment casing is well grounded, and any interruption in the grounding circuit may cause personal injury;
- (2) The power supply connected to the equipment, please make sure that the protection ground is connected before use;
- (3) In order to reduce the risk of fire, the line fuses can only be replaced by the same type and the same level if necessary, and cannot be replaced by other fuses or materials;
- (4) In order to prevent the risk of personal injury, it is necessary to install a leakage protection power switch with a load current of not less than 40A outside the laser.
- (5) Ensure that the input AC voltage of the laser is normal AC mains voltage (single-phase AC 200-240VAC-2000C(G6)), and the wiring is correct. Any wrong wiring method may cause personal injury or equipment damage;
- (6) There are no parts, components or components that the user needs to

repair by himself. All maintenance work needs to be done by Chuangxin laser professionals;

(7) Do not remove the casing, disassemble the laser and damage related labels, there is a risk of electric shock or burns;

(8) Any product that has been disassembled and disassembled will no longer enjoy warranty rights.

**WARNING :**

© The input voltage of the laser is (single-phase alternating current 200-240VAC-2000C(G6)), there is a danger of electric shock. All related cables and connecting wires have potential hazards.

## **5.Environment Conditions and Precautions**

For ensuring the safety of the laser working area, suitable enclosures shall be applied, including but not limited the laser safety signs and the interlocking devices. Corresponding operators must be trained and examined and know the normal safety specifications for operating the laser.

Meanwhile, it is important that the output components shall not be installed at eye level. Because of interaction of the laser and the metal material, the radiation of high-level ultraviolet light or visible light may be produced. Make sure that the laser is provided with the protective cover to prevent the eyes or other parts of human bodies from damage by radiation.

**We recommend that you comply with the following operating measures to prolong the service life of the laser:**

(1) Please ensure that the working area is properly ventilated and the laser is placed in a cabinet with temperature and humidity control and dustproof function. Do not expose the laser to high temperature and high humidity.

(2) Operating the equipment at high temperatures accelerates aging, increases

current thresholds, and reduces laser sensitivity and conversion efficiency. If the device is overheated, please stop using it and ask for help from Chuangxin Laser.

Caution:

- ◎ Please operate the equipment carefully to avoid accidental damage to the equipment.
- ◎ If the laser is placed in an environment below 0 °C, be sure to add the corresponding antifreeze to the water cooler. If the machine is not used for a long time, be sure to drain the water in the water inlet and outlet (high-pressure air gun is recommended) to prevent the residual water from freezing and damaging the water-passing device. If the ice causes the water pipe to break, there will be a risk of leakage during the re-transmission of water and electricity, or even more serious personal injury.



## 5-Additional Safety Information

**For additional information regarding Laser Safety, please refer to the list below :**

Laser Institute of America(LIA)

13501 Ingenuity Drive, Suite 128

Orlando,Florida 32826

Phone:407 380 1553,Fax: 407 380 5588

Toll Free:1 800 34 LASER

American National Standards Institute

ANSI Z136.3, American National Standard for the Safe Use of Lasers

(Available through LIA)

International Electro-technical Commission

IEC 60825-1, Edition 1.2

Center for Devices and Radiological Health

21 CFR 1040.10 - Performance Standards for Light-Emitting Products

US Department of Labor - OSHA

Publication 8-1.7 - Guidelines for Laser Safety and Hazard Assessment.

Laser Safety Equipment

Laurin Publishing

Laser safety equipment and Buyer's Guides

## Chapter 3

# Product Description

### 1-Features

MFSC(2000C G6.3) CW Fiber Laser Series are compact and efficient and high-quality laser output lasers developed for industrial application. They are mainly applied to the fields of punching, welding, cutting, etc.

#### **Main Features:**

- 1、High-quality laser output
- 2、High power, high efficiency
- 3、High reliability, long service life
- 4、Compact, rugged package
- 5、Extension programming interface

#### **Applications:**

- 1、Industrial applications
- 2、Scientific research

### 2-Module Configuration

Maxphotonics offers many configurable modes. This manual will give complete instructions for all modes, please refer to section 6.3-6.6.

### 3-Laser Model Designation Codes

		M - F - S - C - XXX - XX
		1 - 2 - 3 - 4 - 5 - 6
1	Manufacturer's code	M means Maxphotonics
2	Gain media of the laser	F means Fiber Laser
3	Laser Module	S means Single Module
4	Laser state	C means Continue Wave
5	Maximum output power	XXXX W means the maximum output power of the laser
6	Additional message	Can be null

### 4-Certification


Maxphotonics certifies that this equipment has been thoroughly tested and inspected and meets published specifications prior to shipping. Upon receiving your equipment, check whether the packaging and accessories have been damaged in transit. If damage is apparent, please contact Maxphotonics immediately.

### 5 - Front Panel Description



6-Back Panel Description



ITEMS	FUNCTION DESCRIPTION
AC 220V	200-240VAC AC power input
POWER	200-240VAC AC switch
RS232	RS232 interface
CTRL	External control interface of laser
ACTIVE/ALARM	Laser normal operation and abnormal status indicator
BLUETOOTH	Bluetooth antenna
WATER IN	Laser water cooled inlet
WATER OUT	Laser water cooling outlet
	Laser ground terminal

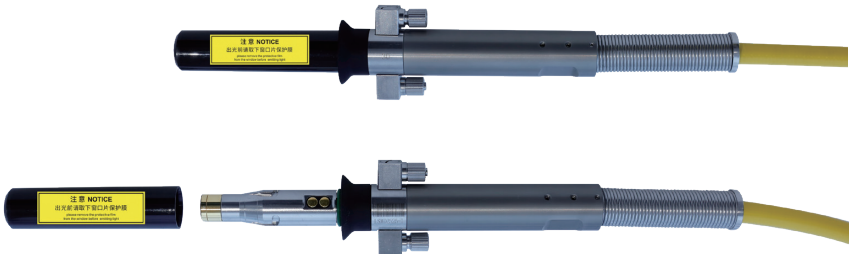
## 7-Optical Output Terminal

### 1 .Optical Output Head

The optical output head come with a protective window that can be replaced if damaged. Please refer to about the cleaning method.

Make sure that the black end cap of the QBH head is removed prior to use and is usually arranged with the laser.

Fiber output head (G4.2 QBH head)



# Chapter 4

## Specification

### 1 -Optics Characteristic Parameters

No.	Characteristics	Test conditions	Min.	Nom.	Max.	Unit
1	Operation mode	CW/Modulated				
2	Polarization	Random				
3	Output power	100% CW		2000		W
4	Tuning range of output power		10		100	%
5	Emission wavelength	100% CW	1070	1080	1090	nm
6	Spectrum width(3dB)	100% CW		4	6	nm
7	Short-term power instability	100% CW>1h		±1	±2	%
8	Long-term power instability	100% CW>24h		±3	±5	%
9	Beam quality BPP	30um-QBH Output			0.7	mm x mrad
10	Laser switching ON time	10%→90%Output		50	100	μs
11	Laser switching OFF time	90%→10%Output		50	100	μs
12	Modulation rate	100%Output			20	KHz
13	Red guide laser power	100%Output	200			μW
14	Feeding fiber cable length	30um-QBH Output	10			m
15	Feeding fiber core size		30			μm
16	Feeding fiber cable bending radius		200			mm
17	Output form	Standard QBH (LOC)				

## 2 -General Characteristic Parameters

No.	Characteristics	Test conditions	Min.	Nom.	Max.	Unit
1	Operating Voltage		200	220	240	VAC
2	Input Power	100% Output			7	KW
3	Operating Ambient Temperature		10		40	°C
4	Operating Ambient Relative Humidity		10		85	%
5	Cooling Method	Water-cooling				
6	Storage Temperature		-10		60	°C
7	Dimensions	440*605*88(W*D*H)				mm
8	Weight	26±2				kg

## 3-Water Cooling Condition

No.	Characteristics	Min.		Unit
1	Cooling Method	Water Cooling		
2	Chiller Set Temperature	Summer 24	Winter 20	°C
		Add antifreeze condition, water cooling temperature 20		
3	Hydraulic pressure	3.5		bar
4	Water Flow Requirements	13~17		L/min
5	Chiller Rated Cooling Capacity Requirements	4.6		kw

### CAUTION :

◎ The cooling capacity of the chiller shall meet the requirements in the table above under the working conditions of ring temperature of 40°C and outlet temperature of 22+2°C(20°C when antifreeze is added).

◎ The above recommended water pressure requires the pressure drop of the main line  $\Delta p \leq 0.5\text{bar}$ . If this value is exceeded, the main circuit water pressure should be increased accordingly.

◎ Cooling water and filter element, need to be replaced once a month; Winter (refers to the low temperature environment of 0 ° C and below) before the coming of the cooling water should be replaced with a volume ratio of 20% glycol solution

(recommended brand Klein), and every two months, it is strictly prohibited to add excessive, low thermal conductivity of antifreeze, excessive addition is easy to cause poor heat dissipation. After the end of winter, it is necessary to replace the antifreeze back to distilled water and replace the filter element, and restore the maintenance frequency of once a month.

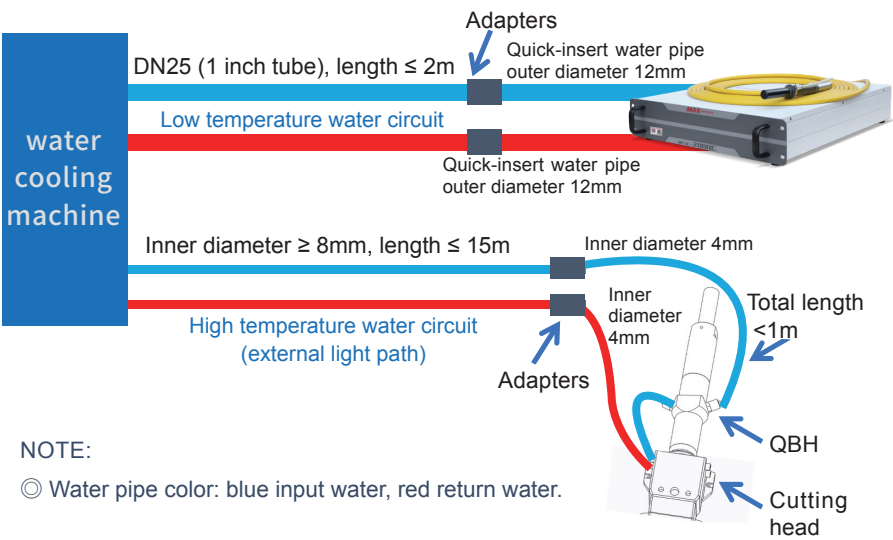
◎ The water cooler with dual temperature and dual control function must be used, and it is recommended that the cooling system run uninterrupted when it is below 0 ° C in winter.

4-QBH Water Cooling Condition

Cooling Method	Water pipe size requirement	Water Flow Rate (L/min)	Hydraulic pressure (bar)	Cooling Temperature (°C)
Water cooling	Outer diameter* inner diameter=Φ6*Φ4	≥2	≥3	28-30

NOTE:

- ◎ External light path tube inner diameter ≥ 8mm, length ≤ 15m;
- ◎ The length of the Φ6 pipe connected to the LOE after switching from the external light path is ≤ 1m;
- ◎ QBH is connected in series with the cutting head;
- ◎ The above recommended external light path water pressure requires the pressure drop of the cutting head  $\Delta p \leq 1.5\text{bar}$ . If this value is exceeded, the external light path water pressure should be increased accordingly.



NOTE:

- ◎ Water pipe color: blue input water, red return water.



## 5-Installation Environment Requirements

- 1.The ambient air cleanliness grade requirement for optical fiber output head installation: 1000 or more stringent grade. Suggestions for Configuration of Standard Purification Workbench;
- 2.laser working environment temperature:10°C–40°C;
- 3.laser working environment humidity:10%-85%;
- 4.Avoid the condensation environment,the specific control standards are as follows:

**Ambient Temperature, Relative Humidity, Dew Point Comparison Table**

Relative Humidity%	30	35	40	45	50	55	60	65	70	75	80	85	90	95
Ambient Temperature (°C)	Dew point Td(°C)													
10	-7.0	-5.0	-3.0	-1.3	0.0	1.5	2.5	3.6	4.8	5.8	6.7	7.6	8.4	9.2
11	-6.5	-4.0	-2.0	-0.5	1.0	2.5	3.5	4.8	5.8	6.7	7.7	8.6	9.4	10.2
12	-5.0	-3.0	-1.0	0.5	2.0	3.3	4.4	5.5	6.7	7.7	8.7	9.5	10.9	11.2
13	-4.5	-2.0	-0.2	1.4	2.8	4.1	5.3	6.6	7.7	8.7	9.6	10.5	11.4	12.2
14	-3.2	-1.0	0.7	2.2	3.5	5.1	6.4	7.5	8.6	9.6	10.6	11.5	12.4	13.2
15	-2.3	-0.3	1.5	3.1	4.6	6.0	7.3	8.4	9.6	10.6	11.6	12.5	13.4	14.2
16	-1.3	0.5	2.4	4.0	5.6	7.0	8.3	9.5	10.6	11.6	12.6	13.4	14.3	15.2
17	-0.5	1.5	3.2	5.0	6.5	8.0	9.2	10.2	11.5	12.5	13.5	14.5	15.3	16.2
18	0.2	2.3	4.0	5.8	7.4	9.0	10.2	11.3	12.5	13.5	14.5	15.4	16.4	17.2
19	1.0	3.2	5.0	7.2	8.4	9.8	11.0	12.2	13.4	14.5	15.4	16.5	17.3	18.2
20	2.0	4.0	6.0	7.8	9.4	10.7	12.0	13.2	14.4	15.4	16.5	17.4	18.3	19.2
21	2.8	5.0	7.0	8.6	10.2	11.0	12.9	14.2	15.3	16.4	17.4	18.4	19.3	20.2
22	3.5	5.8	7.8	9.5	11.0	12.5	13.8	15.2	16.3	17.3	18.4	19.4	20.3	21.2
23	4.4	6.8	8.7	10.4	12.0	13.5	14.8	16.2	17.3	18.4	19.4	20.4	21.3	22.2
24	5.3	7.7	9.7	11.4	13.0	14.5	15.8	17.0	18.2	19.3	20.4	21.4	22.3	23.1
25	6.2	8.6	10.5	12.3	14.0	15.4	16.8	18.0	19.1	20.3	21.3	22.3	23.2	23.9
26	7.0	9.4	11.4	13.2	14.8	16.3	17.7	19.0	20.1	21.2	22.3	23.3	24.2	25.1
27	8.0	10.3	12.2	14.0	15.8	17.3	18.7	19.9	21.1	22.2	23.2	24.3	25.2	26.3
28	8.8	11.2	13.2	15.0	16.7	18.0	19.6	20.9	22.0	23.0	24.2	25.2	26.2	27.1
29	9.7	12.0	14.0	15.9	17.6	19.2	20.5	21.3	23.0	24.1	25.2	26.2	27.2	28.1
30	10.5	12.9	14.9	16.8	18.5	20.0	21.4	22.8	23.9	25.1	26.2	27.2	28.2	29.1
31	11.4	13.8	15.9	17.8	19.4	20.9	22.4	23.0	24.8	26.0	26.9	28.2	29.2	30.1
32	12.2	14.7	16.8	18.6	20.3	21.9	23.3	24.6	25.8	27.0	28.1	29.2	30.1	31.1
33	13.0	15.6	17.6	19.6	21.3	22.9	24.2	25.6	26.8	28.0	29.0	30.1	32.1	32.1
34	13.9	16.5	18.6	20.5	22.2	23.8	25.2	26.5	27.7	29.0	29.5	31.1	32.1	33.1
35	14.9	17.4	19.5	21.4	23.0	24.6	26.2	27.5	28.7	29.9	31.0	32.1	33.1	34.1
36	15.7	18.1	20.3	22.2	24.0	25.0	27.0	28.4	29.0	30.9	32.0	33.1	34.1	35.2
37	16.6	19.2	21.2	23.2	24.9	26.5	27.9	29.5	30.7	31.8	33.0	34.1	35.2	36.2
38	17.5	19.9	22.0	23.9	25.8	27.4	28.9	30.3	31.5	32.0	33.9	35.1	36.0	37.0
39	18.1	20.8	23.0	24.9	26.6	28.3	29.8	31.2	32.5	33.8	34.9	36.2	36.8	38.1
40	19.2	21.6	23.8	25.8	27.6	29.2	30.7	32.1	33.5	34.7	35.8	36.8	38.1	39.1

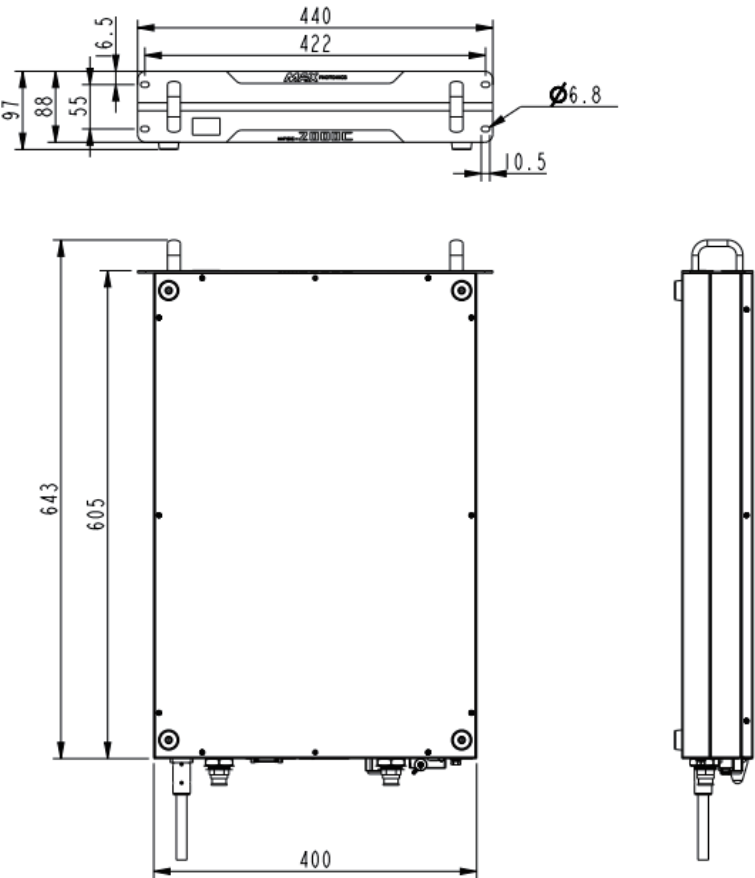
**NOTE :**

© In order to ensure a good operating environment of the laser, to reduce the probability of failure due to condensation. We recommend to prepare an air-conditioned room for the laser, so that the temperature in the air-conditioned room is  $\leq 30^{\circ}\text{C}$ , and the relative humidity is  $\leq 70\%$ . The water cooler should be placed in a different space from the laser. It is forbidden to place the water cooler in the air-conditioned room;

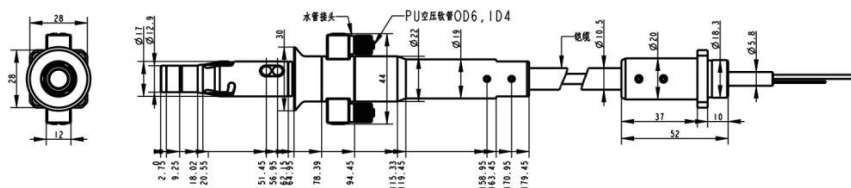
© The laser head works at circulating temperature. In order to avoid condensation on the laser head, it is necessary to adjust the temperature of the cooling water of the external light path to room temperature. It is forbidden to cool the laser head with low-temperature cooling water.

# 6-Structural Layout

Laser Three Views. (Unit: mm)



Outline dimensions of laser output terminal (unit: mm)



## Chapter 5

# Disassembly Guide

### 1-Disassembly Step

The laser belongs to the precise valuables, so Maxphotonics recommends the following steps to unpack the packing box.

**Please unpack according to the following steps:**

- (1) Place the package containing the laser device on a horizontal platform, such as a floor or a large table;
- (2) Open the main package and remove the foam cover;
- (3) The fiber is placed on the top plate of the laser. Please take it out carefully to ensure that the maximum bending radius of the fiber optic cable is  $>200\text{mm}$ . When removing, it is recommended that the three people cooperate with each other. Two people lift the laser body and the other person is responsible for removing the cable.
- (4) Remove the foam cover and take out the accessory.
- (5) Please check the accessories according to the Packing List.
- (6) Please keep all the items after unpacking in case of future transportation or storage.

**CAUTION:**

© If any damage of the external package and internal parts has been found upon receipt of product, please contact Maxphotonics Co., Ltd. or designated agent immediately.

## 2-Packing List

No.	Names of fittings	Description	Unit	Quantity
1	Fiber Laser	MFSC-2000C(W)-BHW6.3	Pc	1
2	External signal wire	/	Pc	1
3	EtherNet Cable	/	Pc	1
4	Round head cotton swab	/	Pc	1
5	Pointed cotton swab	/	Pc	1
6	Superfine dust-free cloth (2*2)	/	Pc	6
7	Sample of QBH water pipe	Φ6x4mm	Pc	1
8	Sample of water pipe of laser	Φ12x8mm	Pc	1
9	Lens protective film	/	Pc	6

# Chapter 6

## Operation Guide

### 1 - Notice

Caution:

- ◎ Please refer to Section "Detail Specification Table" for proper electrical power.
- ◎ Refer to Section "General Safety Instructions" for inspecting whether the configuration environment of peripheral work of the laser meets the requirements.

### 2 - Electrical Power Connection

A power input cord of the laser shall be connected to single-phase AC current. Please make sure the grounding cord is perfectly connected, or the laser may be damaged potentially.

For ensuring the safety feature, Maxphotonics recommends you connect a 40A circuit breaker (air switch) in series between the power supply unit and the laser. This electric power shall be in close proximity to the power supply unit of the equipment and can be easily disconnected.

Refer to Section "Detail Specification Table" to determine your electrical specification if you have any problem about wiring.



### 3- Extension Interface

The laser CTRL interface is a high quality DB15 interface that provides a variety of signals for the functional control of the laser, as described below:

2000C(G6.3) DB15 interface

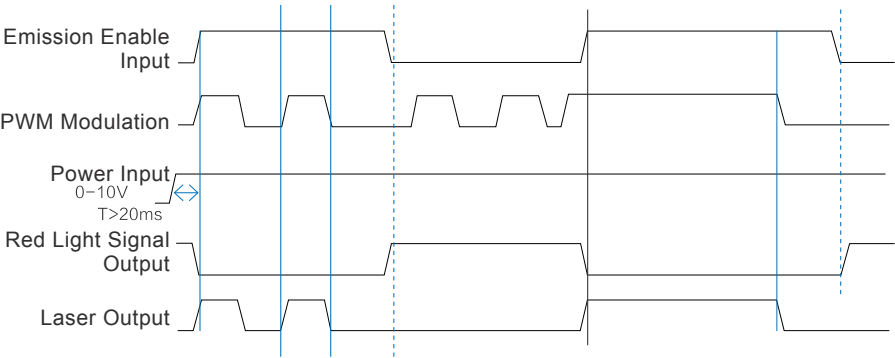
PIN #	Signal Name	Type	Functionality	Wire Color
1	EX_LOCK+	IN	<b>Interlock Input</b> The interlock signal from External to Laser. When the "EX_LOCK+" and "EX_LOCK-" are short connected (dry contact), the Laser emission is ON; When the "EX_LOCK+" and "EX_LOCK-" are disconnected, the Laser emission is OFF.	Orange
2	EX_LOCK-			Orange and Black
3	EX_EMERGENCY1_INPUT 1+	IN	<b>Emergency Stop Input 1</b> If the two pins are connected (dry contact), Laser Emission is ON; If the two pins are disconnected, Laser Emission is OFF.	Light Blue
4	EX_EMERGENCY1_INPUT 1-			Light Blue and Black
5	EX_EN+	IN	<b>Enable Signal</b> When voltage of those two pins is High (24V), the Laser is Enabled; When voltage of those two pins is Low(0V), the Laser is Disabled.	Red
6	EX_EN-			Red and White
7	EX_M+	IN	<b>PWM Modulation</b> Digital Input with PWM signal to control output power.	Black
8	EX_M-			Black and White
9	EX_DA+	IN	<b>0-10V Output Power Control</b> External 0-10V input to control Laser output power, 1V--10%, 10V--100%, I ≥ 5mA	Green
10	EX_DA-			Green and White



11	ERROR_A	OUT	<b>ERROR/ALARM</b> When there is an error/alarm, two pins are connected, output is High; When there is no error/alarm, two pins are disconnected, output is Low.	Black and White
12	ERROR_B			Black
13	N/A	Reserved		
14	EX_CONTROL-	IN	<b>External Control Laser Emission</b> When “EX_CONTROL-” and “EX_CONTROL+” are short connected (dry contact), the Laser emission is ON; When “EX_CONTROL-” and “EX_CONTROL+” are disconnected the Laser emission is OFF.	Yellow
15	EX_CONTROL+			Yellow and Black

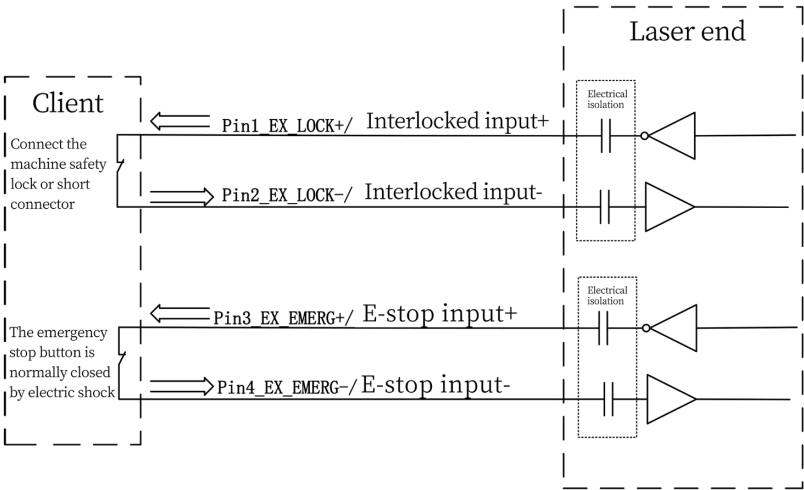
Remark: For pins are voltage driven (0...+5 V = LOW, +20...+30 V = HIGH).

External Control Signal Timing



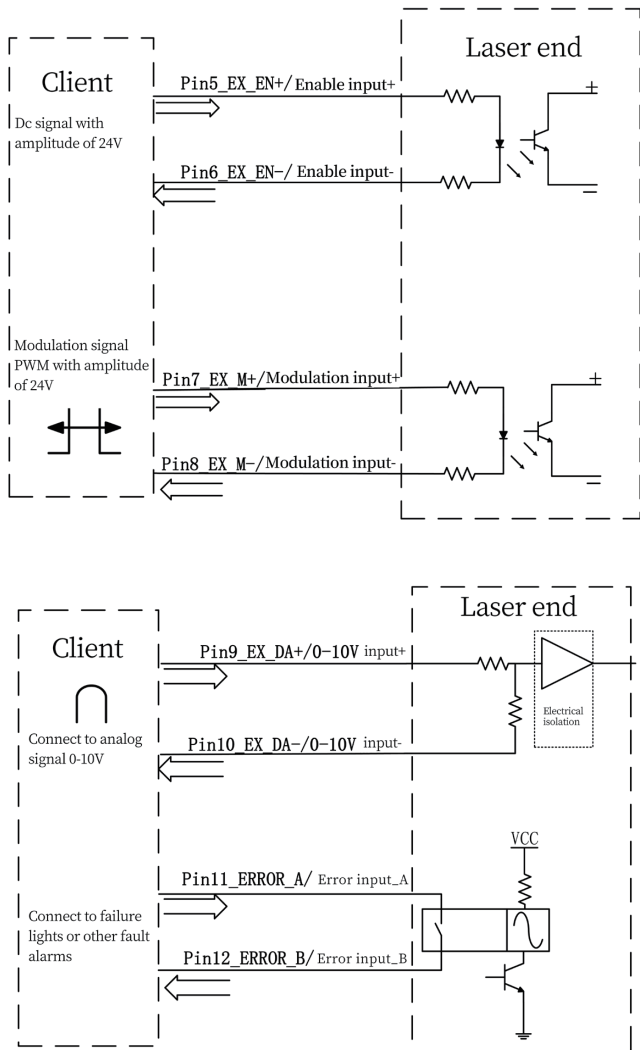
ATTENTION:

© For your safety and reliable operation of the equipment, please strictly follow the product instructions to install and connect the external control of the product Cables, power cables, and ground cables.

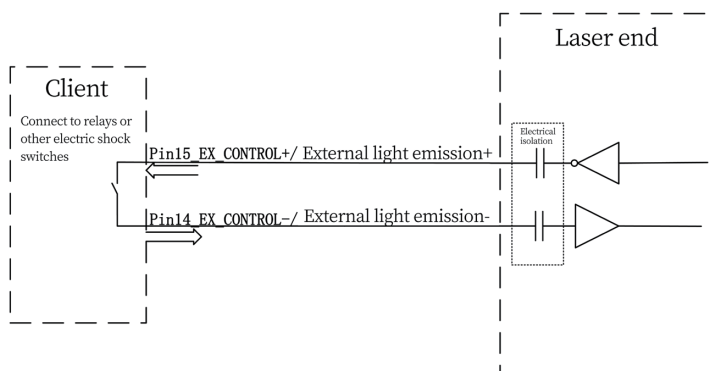


**ATTENTION:**

◎ Interlock/scram input is a switch type (dry contact) signal prohibited from accessing voltage/current signals.



Error output contact voltage  $V \leq 30V$ , current  $I \leq 100mA$ .



#### ATTENTION:

- ⊙ The external optical signal belongs to the switch type (dry contact) signal Voltage/current signal is prohibited;
- ⊙ For safety reasons, the laser is initialized every time it starts After the external light signal needs to be short-circuited once again Will take effect to allow light output.

## 4-Fiber Connector Inspection and Cleaning Guide

### 1.Tools For cleaning a fiber connector you need the following materials:

- (1) Powder-free rubber gloves or fingerstall
- (2) Lint free optical cleaning wipes and/or swabs
- (3) Anhydrous ethanol (Optical level, pure >99.5%)
- (4) Compressed air (oil free, water free)
- (5) Microscope
- (6) Light source

#### CAUTION :

- ⊙ It is imperative that the protective lens are checked for dirt, dust, or damage before you use the fiber connector. It will lead to heavy damage if the laser equipped with dirty or damaged fiber connector.

- ◎ The use of a dirty fiber connector can result in laser damage, which is not covered by the Maxphotonics' warranty.
- ◎ The laser will not be covered by the Maxphotonics' warranty if the buyer change the laser without permission.

**IMPORTANT :**

- ◎ It is imperative that you wear powder-free rubber gloves during this cleaning procedure! It is hereby stated that damage to the fiber connector can occur due to mishandling, the use of incorrect cleaning procedures, or chemicals for cleaning. This is not covered by the Maxphotonics' warranty.
- ◎ Ethanol concentration should be above 99.5% during cleaning.

## **2.Operating Procedures**

### **Cleaning and maintaining according to the following procedures:**

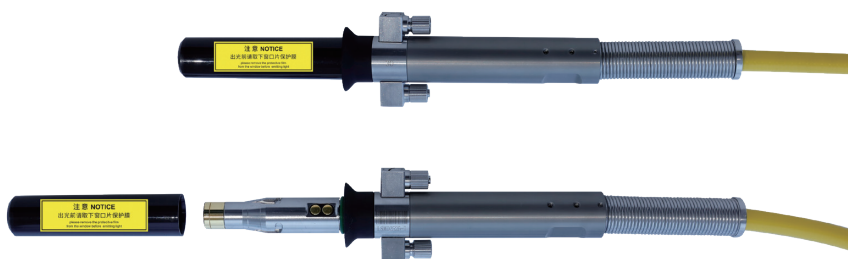
- (1) Turn off the laser switch;
- (2) Remove the black outer protective sleeve and leave the white inner cap on and clean the fiber connector exterior with optical cleaner, wipe it with a clean optical wipe and dry it with compressed air.
- (3) Place fiber connector in the holder of the microscope, remove the white inner cap from the connector.
- (4) Focus the microscope onto the connector surface so that the protective lens can be seen clearly from the microscope.
- (5) Check the surface carefully. If some contamination is visible on the surface, cleaning is necessary:
  1. Put a few drops of alcohol onto the lint free swabs and throw away the excessive alcohol.
  2. Place the swabs on the dust via microscope.
  3. Cleaning the dust carefully, and move it to the edge of lens.

4. Repeat these cleaning steps until all contamination is removed. Take a final check under the microscope.

(6) Reinstall the inner cap and the outer sleeve onto the cleaned fiber connector.

(7) Take out the cap and sleeve, then connect the fiber connector with cutting head quickly and fasten them. (Place the cap face down on a clean surface or a lint-free wipe.)

Take out the cap and sleeve



Install fiber connector under microscope



### Cleaning protective lens with swabs



#### IMPORTANT:

- ◎ Do not reuse non-woven cotton or cotton swabs.
- ◎ Do not touch the protective lens of the fiber connector with your fingers.
- ◎ Do not blow directly with the mouth to protect the surface of the lens from dirt, which may cause new dirt.
- ◎ Do not touch the tip of the cleaning swab with your fingers.
- ◎ Please don't forget to clean when you put back the protective cover and sleeve.
- ◎ When using compressed air, do not blow dirt directly from the front. Use side blowing to avoid dirt from entering the surface.
- ◎ If the fiber optic connector cannot be replaced immediately on the optical component, cover the tail with a protective cover that has been cleaned with compressed air.

## 5-Start Step

### WARNING:

- ⊙ Make sure that all the electrical connections (including cooling water connections) are connected prior to use. All the connectors must be held steady with screws if possible.
- ⊙ NEVER look directly into the output fiber and make sure that you wear the laser safety eyewear while operating the product.
- ⊙ Make sure all power is removed from the laser when wiring.

### Starting procedures are as follows:

- (1) Start the water cooler;
- (2) Remove the collimator end cap;
- (3) Check that the collimator end face is clean and free of debris;
- (4) Ensure that the emergency stop and interlock of the external control line are in the short-circuit state;
- (5) Turn on the laser power supply.

## 6- Mode Description

### The working modes of the laser are as follows:

(1) Internal Control: Control the output of the laser via control software. This mode is used for checking whether the laser is normal or not, and testing the laser power.

(2) External Control: Control the output of the laser via external control line (EE, modulation, 0-10V analog voltage and START button). This mode is used for cutting and welding.

(3) Indicator status indication:

- ⊙ Standby: the traffic light blinks alternately at 1HZ;
- ⊙ Light state: green light on;
- ⊙ Alarm state: the red light is steady on.



## 7-Software Description

(1) Enter “Chuangxin Laser official website” - “Download Center” - “Software”, download “NET4.6”, “G6-Series-n.n.n.n”. NET4.6” and ‘G6-Series-n.n.n.n’. (Versions may be upgraded from time to time.

(Subject to the announcement on the official website without prior notice.)

Website: <http://en.maxphotonics.com/En/Software.html>

MAX PHOTONICS		Product	Service	Applications	About Us	Contact Us	CN / EN	Q
USB-RS232 Driver (UNITEK)		Updated 2020-05-12		↓	NET4.6		Updated 2020-05-12	↓
Max G2 Series - 1.0.0.11		Updated 2020-05-12		↓	MaxMarking_Release_2.7.12_0225		Updated 2020-09-07	↓
Maxphotonics G3 Series Laser Software Installation Guide V1.3		Updated 2021-01-19		↓	G3-Series MD (Maxphotonics) -en - 1.0.0.86 (Diode Laser)		Updated 2021-04-09	↓
G3-Series -en - 1.0.1.38		Updated 2024-04-17		↓	G6-Series - 1.0.0.17		Updated 2024-07-30	↓
G6_APP_10.11.1.1.apk		Updated 2024-12-02		↓				

(2) Install the runtime environment (NET4.6). (You do not need to install NET4.6 on Win10 systems or systems that already have .NET 4.6 installed).

(3) Install the monitoring software (G6-Series-n.n.n.n) and a shortcut to “G6-Series” will appear on your desktop.

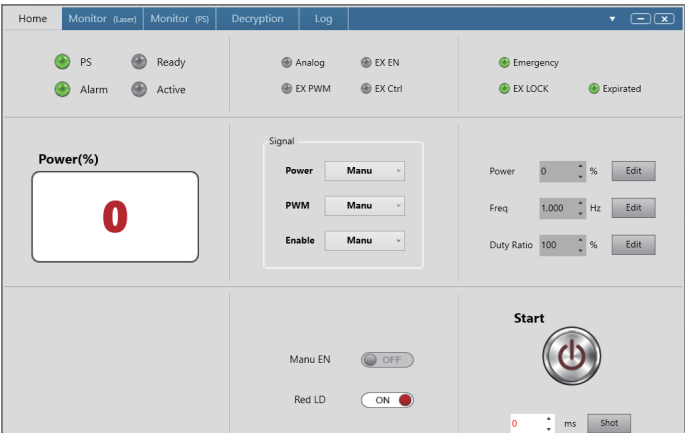


(4) Use the serial cable to connect the computer to the laser backplane communication interface, and power on the laser.

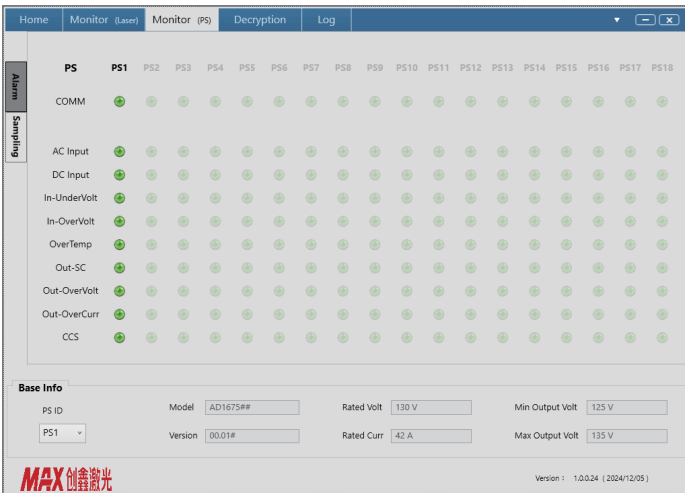
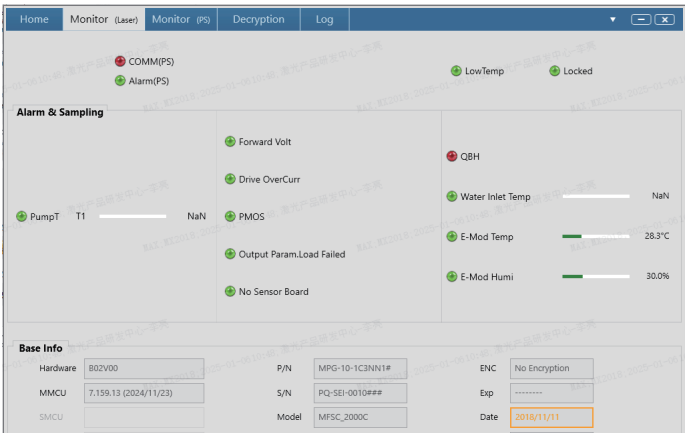
(5) Double click the desktop “G6-Series” shortcut to open the monitoring software and enter the following connection interface. Select COM as the connection method and the corresponding COM number, click “Login” button to try to connect with the laser.

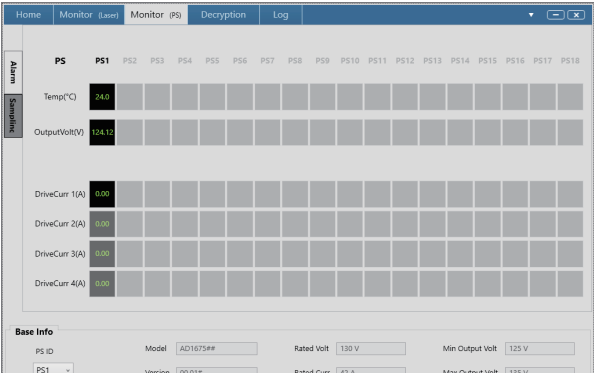


(6) If the laser has been powered up and the model can be matched with the monitoring software, it will enter the following main interface.

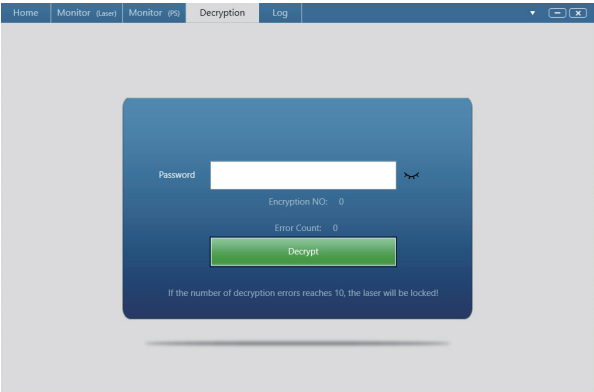


(7) Monitor page.





(8) Decryption page.



(9) Log page.

NO.	Local Date	L-TM	User	Type	ItemName	Value
1	2024/12/13	15:54:51		State_Feedback	COMM	ON
2	2024/12/13	15:54:51		State_Feedback	Ready	OFF
3	2024/12/13	15:54:52		State_Feedback	Active	OFF
4	2024/12/13	15:54:52		State_Feedback	PS	ON
5	2024/12/13	15:54:52		State_Feedback	Start	OFF
6	2024/12/13	15:54:52		State_Feedback	24V	ON
7	2024/12/13	15:54:52		State_Feedback	Manu EN	OFF

## 8-Error Listing

The fault alarm points set by the laser include:

SN.	Message	Description	Trouble shooting
1	Front lamp warning	Laser internal light path testing fault	Operation leads to low output power of laser such as low modulation frequency, low peak power, low cutting power
2	Water inlet temperature alarm	Water inlet temperature fault	The water inlet temperature is faulty. Please check whether the set temperature of your chiller meets the requirements.
3	Emergency stop alarm	External control emergency stop not short	Confirm whether the external control emergency stop input is in good condition; Short connect the external control emergency stop, restart the laser can work normally again.
4	Pump source temperature alarm	Chiller or laser internal pipeline failure	Please check the pressure of the chiller water pressure gauge; check whether the water inlet and outlet pipes are reversed; check the water pipes or use air guns to empty the pipes.
5	Overcurrent warning	Overcurrent fault of laser	If "0-10V" DA value exceeds the pre-set value, the internal overcurrent fault will occur; if the fault is not caused by this reason, please contact Maxphotonics.

6	QBH installation alarm	Install error of QBH	The fault will be produced when QBH head is not inserted in the internal part of the cutting head; if this cause is excluded, please contact Maxphotonics.
7	Encrypted alarm	Laser encryption expires	If the indicator on the rear panel is steady red, continue to operate normally Please contact Chuangxin customer service staff.

**NOTE:**

© All the alarm message will be displayed on the Monitor Software. Please pay attention and contact our service personnel if you need.

# Chapter 7

## Service and Maintenance

### 1-Maintenance Notes

#### CAUTION :

- ⦿ No operator serviceable parts inside. Refer all servicing to qualified Maxphotonics personnel.
- ⦿ For ensuring that the repairs or replacement within the warranty scope can be carried out, and perfectly maintaining your interests, please submit application to the Maxphotonics or the local representative after finding the faults. Upon receiving our authorization, you need to pack the product in a suitable package and return it.
- ⦿ You should keep the proof when finding any damage after receiving the product, so as to claim the rights to shippers.

#### IMPORTANT :

- ⦿ Do not send any product to Maxphotonics without RMA.
- ⦿ If the product is beyond the warranty period or the warranty scope, customers shall be responsible for the repairing cost.

#### CHANGE :

- ⦿ We have the rights to change any design or structure of our product, and the information is subject to change without notice.

## 2-Service Statements

More problems regarding the safety, set-up, operation or maintenance please reading this "User Guide" carefully and following the operation steps strictly. Please call the Customer Service Department for other questions.

Please call the Customer Service Department for other questions: 400-900-9588.

Your problems will be followed up by our technical support group after verified. If the problems cannot be solved, you may need to return the product to Maxphotonics for further troubleshooting.



## Chapter 8

# Warranty Statements

### 1-General Clauses

Maxphotonics Co.,Ltd. carries out warranty for any defect of the product caused by its material and production technology within the warranty period agreed in contract, and ensures that its product meet the relevant quality and specification requirements specified in the document under normal use condition.

Maxphotonics Co.,Ltd. rationally determines to repair or replace the products with faults caused by its material or production technology within the warranty period, and repairs or replacement of all the products within the warranty scope are carried out according to the rest of the warranty period of primary products.

### 2-Warranty Limitations

Under the following circumstances, the products, parts (including the fiber connectors) or equipment are not within the warranty scope:

- (1) Tampered, opened, detached or reconstructed by personnel outside Maxphotonics;
- (2) Damaged from misuse, neglect or accident;
- (3) Used beyond the specification and technical requirements of the product;
- (4) Indirectly damaged from users' software or interfaces;
- (5) Improper installation or maintenance, or operating under conditions not

included in this manual;

(6) The fittings and the fiber connectors are not included in the warranty scope.

Customers are obligated to understand the information above and operate according to the User Guide and specification, or the faults arising therefrom are not included in the warranty scope.

#### IMPORTANT :

- ◎ Within the warranty scope, purchasers must feedback within 31 days after finding the product defect.
- ◎ Maxphotonics does not grant any Third Party rights to repair or replace the parts, the equipment or other Maxphotonics products.