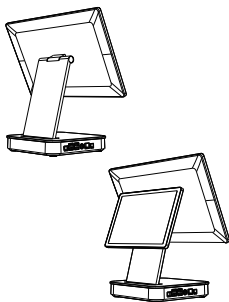


S700&S700Plus Smart Cash Register

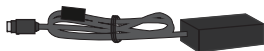


Tip: Please be sure to read this guide carefully before using the machine.
Any hardware or software upgrades will not be notified.

Packing List



Cash Register x1

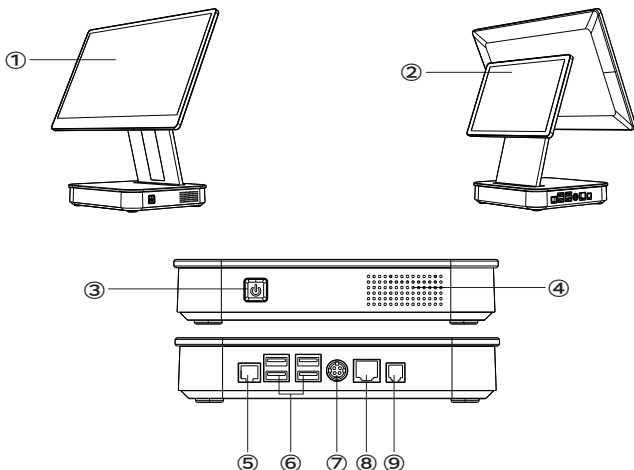


Power Adaptor x1



AC Power Cable x1

Function



- | | | |
|---------------|----------------|----------------|
| ① Main Screen | ④ Speaker | ⑦ Power Supply |
| ② Sub-screen | ⑤ Network Port | ⑧ Network Port |
| ③ Switch | ⑥ USB | ⑨ E-scale Port |

Installation

Step 1: Connect the AC power cable with the power adapter as shown in the figure 1, making sure that the contact is good.

Step 2: As shown in figure 2, insert the DC plug of the power adapter into the machine's power supply port. Insert the AC plug of the power adapter into the socket.

Step 3: Plug the RJ12 cable into the machine's cashbox port as shown in figure 3.

Figure 1

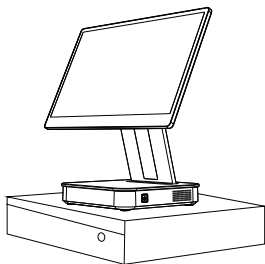
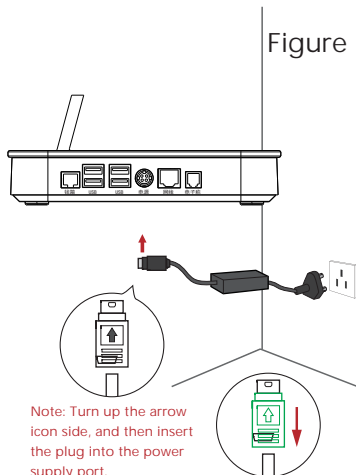


Figure 3

Figure 2



Note: Turn up the arrow icon side, and then insert the plug into the power supply port.

Note: When pulling out the power plug, firstly pull slightly the green part of the plug in the direction of the red arrow to unlock it

Booting-up

Step 1: Plug the network cable into the Ethernet network port RJ45 as shown in Figure 1.

Step 2: As shown in Figure 1, keep pressing down the switch button for 2 seconds and then release it, and the machine will be on and light up within 3 seconds.

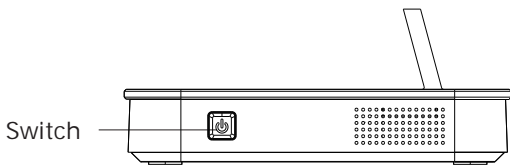


Figure 1

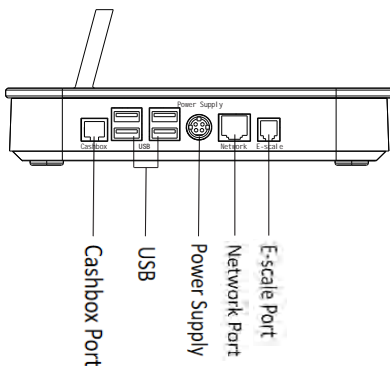
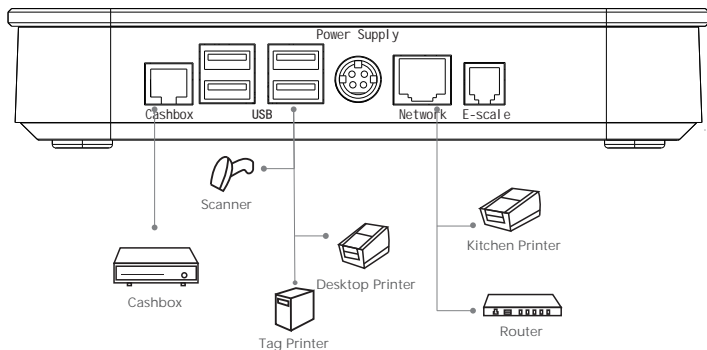


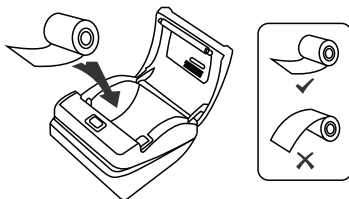
Figure 2

Accessory Connection

- 1 Connect accessory devices to the cash register.



- 2 Put printing paper.



- 3 Connect scanner and use immediately.
No other step is needed.

Specification

Dimension : 363mm*202mm*351mm
Main Screen:15.6 inch 1366x768
Sub Screen: 10.1 inch 1280x800 (optional)
Touch Screen: Multi-touch Capacitive Screen
CPU: RK3566, 4-core, 1.8GHz (Single)
RK3568, 4-core, 2.0GHz (Double)

OS : Android 11.0
Memory: 4G LPDDR4 (optional: 2G LPDDR4)
32G eMMC (optional: 16/64G eMMC)

Ethernet : 10/100M Adaptive
WiFi: 2.4G , IEEE802.11b/g/n
Bluetooth: BT4.2
Port: USB2.0*4 , RJ45*1 , RJ12*1 ,
RJ11*1 , Power*1

Accessory: Power Adaptor, Power Cable
Button: ON/OFF Button
Adaptor: AC:100-240V , DC:12V3A

Warranty Card

Model : _____ Date : _____

Name : _____ Phone : _____

Failure : _____

Address : _____

Announcement

Dear Users:

Greetings! Thank you for choosing our products. Our company provides efficient and high-quality warranty service. please pay attention to the following terms:

1. Please keep this card and receipt. With them, user enjoys a one-year warranty on the whole machine from the date of purchase. During the period, damaged spare parts or machine failure caused by quality problems can be replaced or repaired free of charge.

2. Warranty is not available for the following conditions:

- A. Damage or failure caused by user's improper use;
- B. Damage or failure caused by non-authorized maintenance center or the user's own disassembly and maintenance;
- C. Damage or failure caused by force majeure;
- D. Customers without warranty card or receipt. The customer should provide unchanged and correct receipt.

3. After the warranty period, and for damage or malfunction caused by the contents of clause 2, replacement or repair will be charged at the appropriate cost.

Qualification



Declaration of Conformity

Hereby, Hangzhou Sunyard Technology Co., Ltd. declares that the radio equipment type S800 Plus, S800, S700 Plus, S700 are in compliance with Directive 2014/53/EU and this product is allowed to be used in all EU member states. The full text of the EU declaration of conformity is available at the following internet address: <https://www.sydtech.com.cn/>

Manufacturer information:

Company name: Hangzhou Sunyard Technology Co., Ltd.

Address: Sunyard Science & Technology Building, 3888 Jiangnan Ave., Binjiang Dist., Hangzhou, China

Operation temperature: 0~45°C

Operation frequency (Max power)

Bluetooth: 2402-2480 (8.4dBm)

WiFi: 2412MHz-2472MHz (19dBm)

RF exposure statement

RF exposure information: The Maximum Permissible Exposure (MPE) level has been calculated based on a distance of $d=20$ cm between the device and the human body. To maintain compliance with RF exposure requirement, use product that maintain a 20cm distance between the device and human body.

FCC regulatory conformance :

This device complies with Part 15 of the FCC Rules. Operation is subject to the following two conditions:

- (1) This device may not cause harmful interference.
- (2) This device must accept any interference received, including interference that may cause undesired operation.

NOTE: This equipment has been tested and found to comply with the limits for a Class B digital device, pursuant to part 15 of the FCC Rules. These limits are designed to provide reasonable protection against harmful interference in a residential installation.

This equipment generates uses and can radiate radio frequency energy and, if not installed and used in accordance with the instructions, may cause harmful interference to radio communications. However, there is no guarantee that interference will not occur in a particular installation. If this equipment does cause harmful interference to radio or television reception, which can be determined by turning the equipment off and on, the user is encouraged to try to correct the interference by one or more of the following measures:

- Reorient or relocate the receiving antenna.
- Increase the separation between the equipment and receiver.
- Connect the equipment into an outlet on a circuit different from that to which the receiver is connected.
- Consult the dealer or an experienced radio/TV technician for help

NOTE: The manufacturer is not responsible for any radio or TV interference caused by unauthorized modifications to this equipment. Such modifications could void the user ' s authority to operate the equipment.

RF Exposure

This equipment complies with FCC radiation exposure limits set forth for an uncontrolled environment. This equipment should be installed and operated with minimum distance of 20 cm between the radiator and your body. This transmitter must not be co-located or operating in conjunction with any other antenna or transmitter.