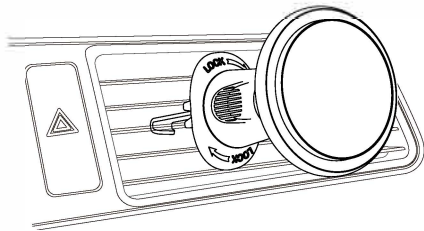


User's Manual
Wireless Car Charger



Mode:RC01
Thank you for choosing this product,
Read the instructions carefully before using!

Parameter Specification

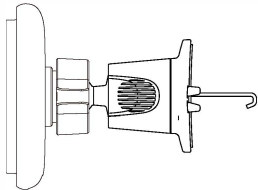
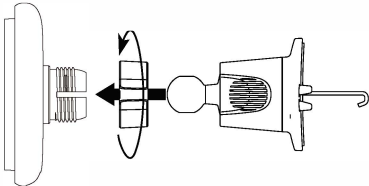
Input: DC 12V/1.5A,9V/1.67A/5V/2A
Output: 15W/10W/7.5W/5W
Product standard: Qi
Charging Distance: <8MM
Product Dimensions: 71*30.5*71mm
ProductMaterial: ABS+ZincAlloy
(QC3.0 car charger is required for fast charging mode)

Indicating status and protection functions

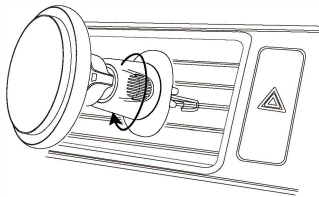
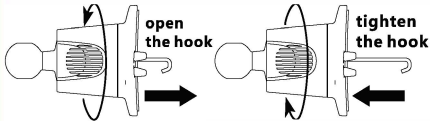
Standby Mode:LED lights are always on.
Charging mode: LED light is off; the phone is removed,
led lightturns blue andenters standby mode.
Product size:71*30.5*71 mm
Foreign Object Detection: Intelligent recognition of foreign bodies,
such as hard objects, keys and other metal or magnetic objects.
All-Round Protection: Temperature, short circuit, overvoltage
over current

Component assembly

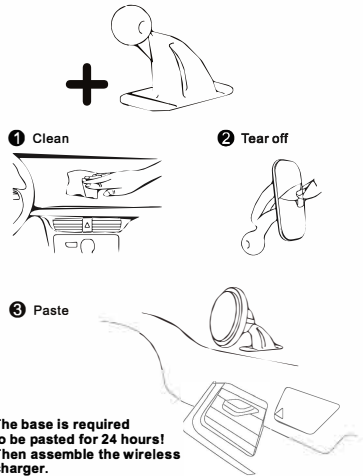
1.Put the ball head into the nut first,then insert it into the
socket on the back of the holder,tighten the nut



2.Loosen the knob and open the hook,install the vent
clip onto the air vent,adjust to desired angle.



INSTALLATION



FAQ:
1.Why not charge /slow charging /intermittent charging?
①Make sure that your phone model has MagSafe function.
②Please use QC3.0 car charger.
③Check if the Phone Case is compatible with MagSafe fu nction.
④Please use the original data cable provided by us.

2.Why is the the mobile phone easy to fall off?
①Please check whether your phone model has MagSafe function.
②Please directly use for iPhone 14 / 13 / 12 Series or ONLY
compatible with MagSafe phone case.

3.Why can't 3M sticky pad stick to the place?
①To maximize stickiness, Paste the 3M sticky pad to where you
want and wait for 24 hours before using.
②If it still can't work, please contact us:RollitoCar@outlook.com

TIPS:
• The device can only provide up to 7.5W charging for
iPhone 14 / 13 / 12 series.
• Does not compatible with iPhone 11 Pro Max or previous models.
• Does not compatible with non-magnetic cases, such as metal
cases and accessories such as magnets, cards, keys and
pop-up grips.

If you have any questions, please do not hesitate to contact us.
Email: RollitoCar@outlook.com

This device complies with part 15 of the FCC Rules. Operation is subject to the following two conditions: (1) This device may not cause harmful interference, and (2) this device must accept any interference received, including interference that may cause undesired operation.

Any Changes or modifications not expressly approved by the party responsible for compliance could void the user's authority to operate the equipment.

Note: This equipment has been tested and found to comply with the limits for a Class B digital device, pursuant to part 15 of the FCC Rules. These limits are designed to provide reasonable protection against harmful interference in a residential installation. This equipment generates uses and can radiate radio frequency energy and, if not installed and used in accordance with the instructions, may cause harmful interference to radio communications. However, there is no guarantee that interference will not occur in a particular installation. If this equipment does cause harmful interference to radio or television reception, which can be determined by turning the equipment off and on, the user is encouraged to try to correct the interference by one or more of the following measures:

- Reorient or relocate the receiving antenna.
- Increase the separation between the equipment and receiver.
- Connect the equipment into an outlet on a circuit different from that to which the receiver is connected.
- Consult the dealer or an experienced radio/TV technician for help.
- This equipment complies with FCC radiation exposure limits set forth for an uncontrolled environment. This equipment should be installed and operated with minimum distance 20cm between the radiator & your body.