

JINGSHAN JINGYANG ELECTRONICS CO., LTD

ADD: Group 1, Sanyang Village, Sanyang Town, Jingshan City, Jingmen City, Hubei Province, China

Tel: +86-15212750567

Email: ella@linpaworld.com

Declaration

Date: 2024-07-25

FEDERAL COMMUNICATIONS COMMISSIONS

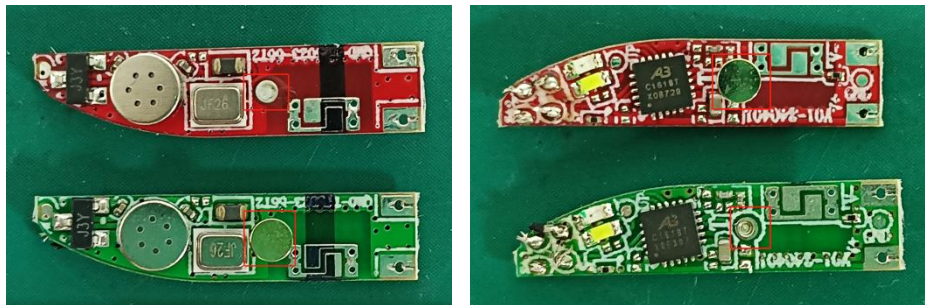
Authorization and Evaluation Division

7435 Oakland Mills Road

Columbia, MD 21046

To whom it may concern:

Our product, TRUE WIRELESS EARBUDS, Model number: PATW-1034-SV, TWS108, PATW-1034-PK, PATW-1034-PR, PATW-1034-BL, FCC ID: 2BFYM-TWS108, is a twins earbud that has a left earbud and a right earbud. We would like to declare that the left earbud and the right earbud are electrically identical except for the red box content in the picture below. We confirm that all information above is true, and we'll be responsible for all the consequences.



Sincerely,

Ella Fang

Signature:

Ella Fang

Title: SALES