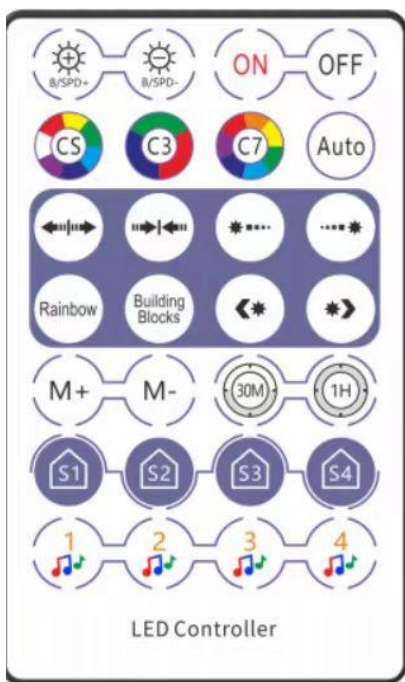


USER M a n u a l

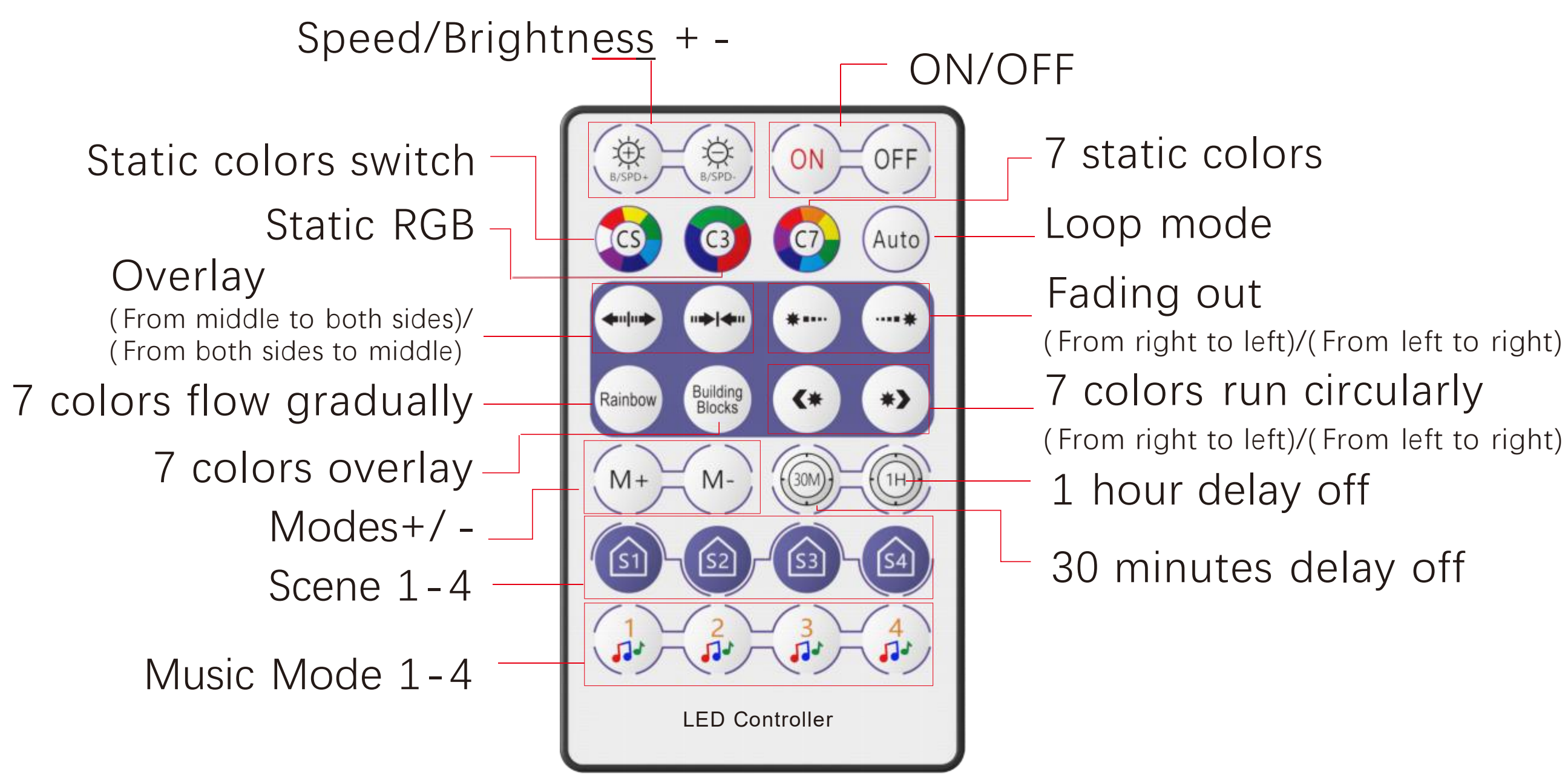
Firework Lamp



I .Product Parameter:

Category	Firework Lamp
Contriller	2 8 keyIR+ Bluetooth
APP	Surplife
Operation Platform	Android 7.0 or IOS12.0 or later
Input Voltage	USB, DC5V
Light color	RGBIC ,Jy1903
Package	Color box
Max Output Power	0.4W/M 64lm/led
Working Temperature	-20~+55℃
Control Distance	Visible distance 30M
Material	ABS/PVC,copper wire
Dimension(L* B* H)	57CM*37CM*9CM

II . Key Instruction



Note:

Scene mode can only record one custom color

- 1)Remote control code matching : power on the device, hold down "ON" key for 5 seconds, the device flashes slowly to indicate successful code matching.
- 2)Remote code clearing : power on the device, hold down "OFF" key for 5 seconds, the device flashes quickly to indicate successful clearing

III. Download Surplife APP

Download “Surplife” APP from App store and Google Play Store, or scan the QR code.

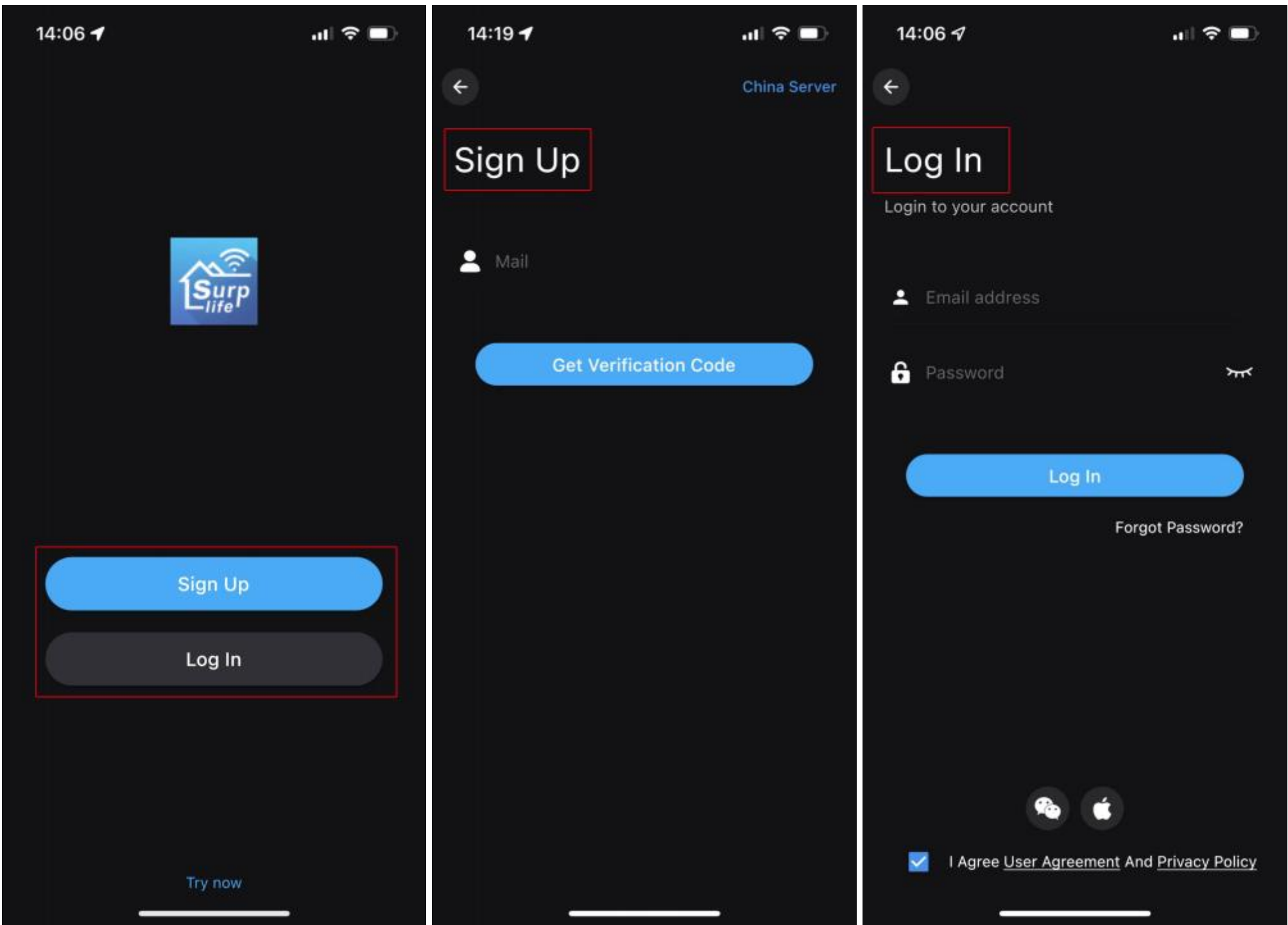


Surplife APP



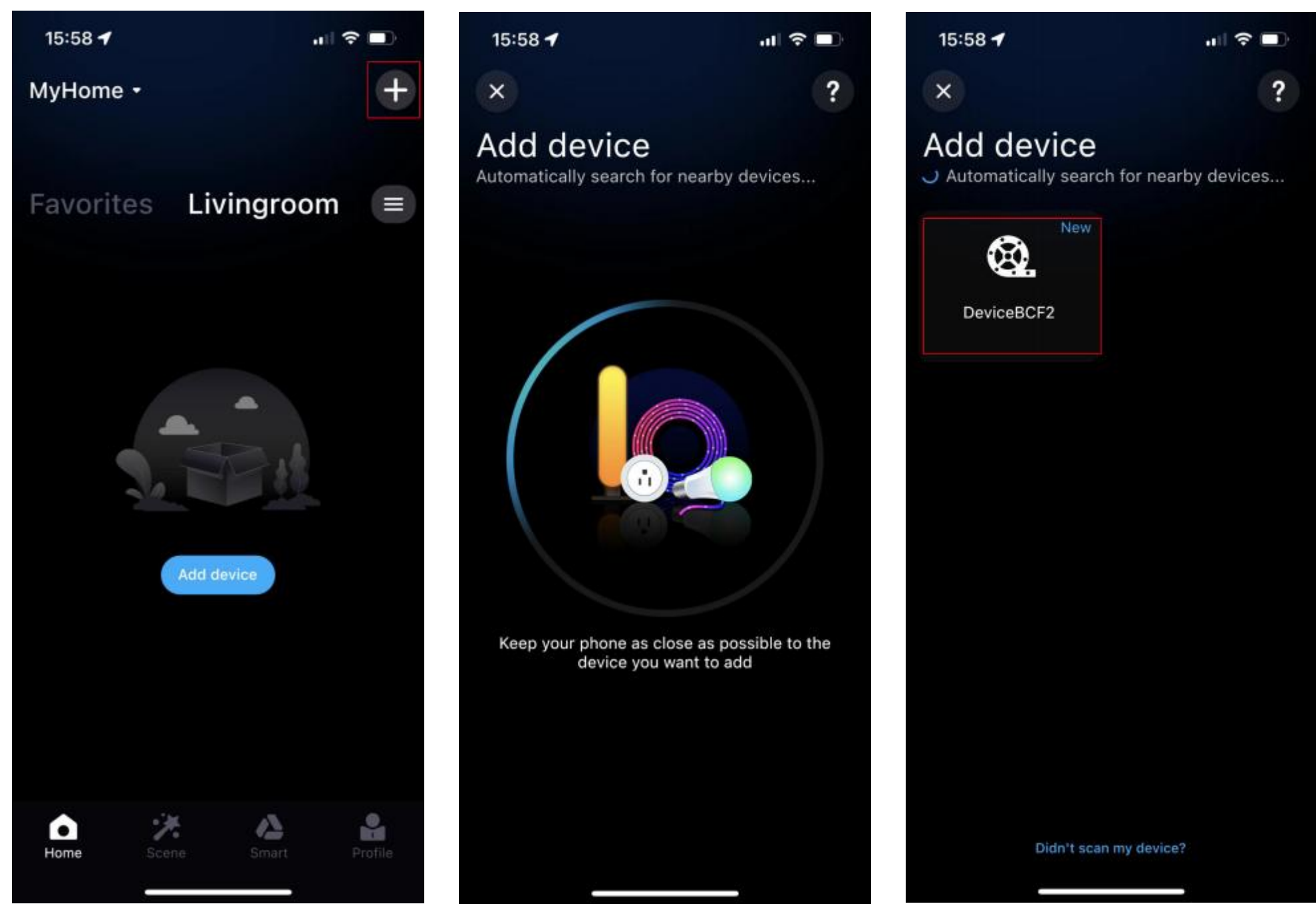
IV. How to connect to Surplife App?

1) Register/Login your Surplife account.

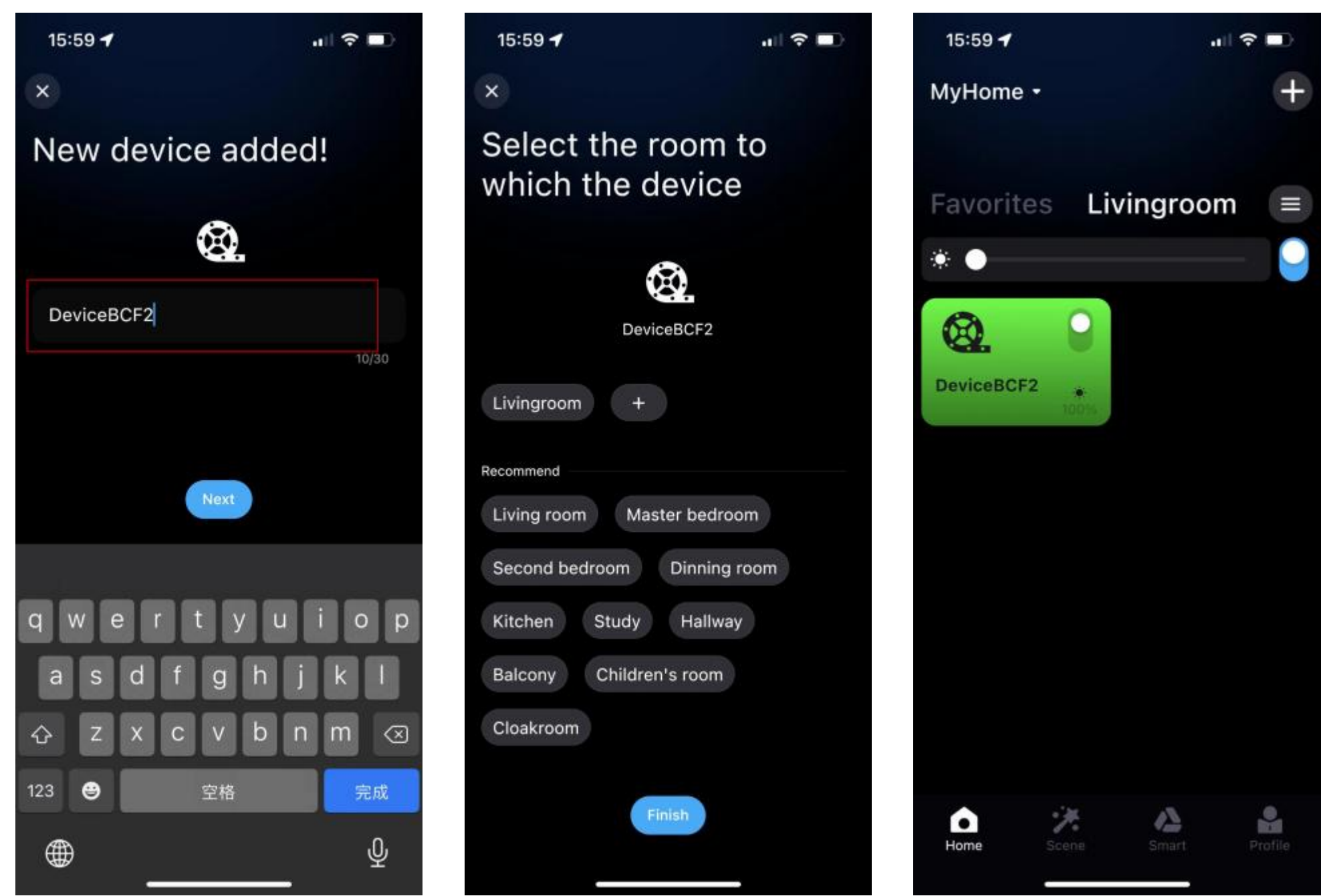


2) Turn on the device and enable your phone's bluetooth.

3)Enter “Surplife” app, tap “add device” or click “+” to add the device.



4) Rename the device and select a room for it.



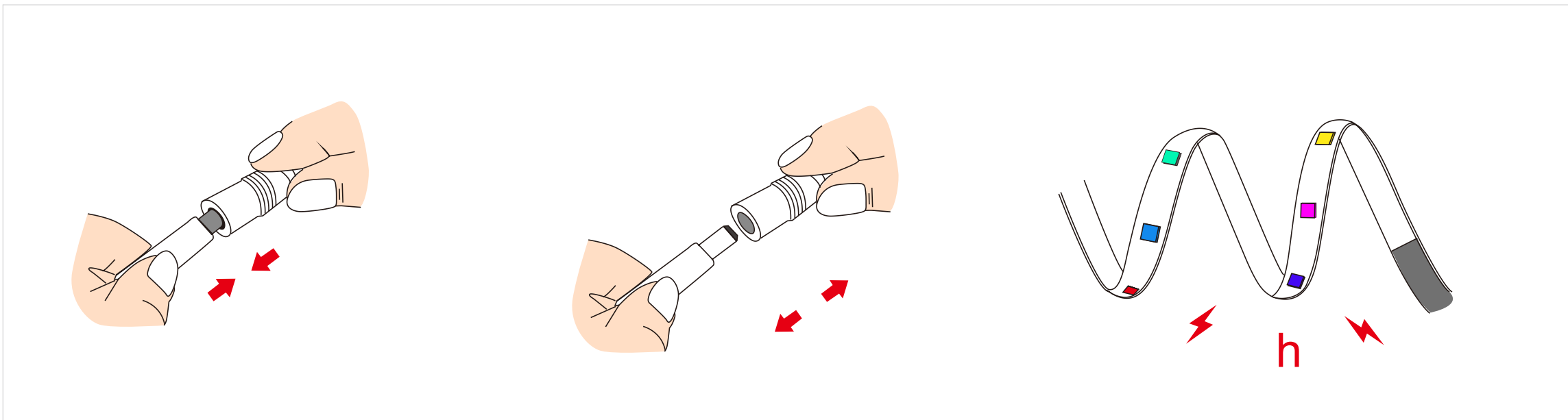
V. Frequently Asked Questions

► How to setup your Bluetooth light?

- . Enable your Bluetooth on your phone.
- . Then power on the led strip light.
- . Open “Surplife” App, the App can directly connect to the device. It can automatically match the light without other steps, and you can experience the smart light simply and quickly.

b How can I do if connecting the Bluetooth device or adding new device failed?

Please power off the led strip light, then turn it on again, if the problem can't solve, please restart the phone.



Scan the “Instruction” QR code to read the electronic manual
Or enter the APP FAQ to learn more.



Instruction

FCC Statement

This equipment has been tested and found to comply with the limits for a Class B digital device, pursuant to Part 15 of the FCC Rules.

These limits are designed to provide reasonable protection against harmful interference in a residential installation. This equipment generates uses and can radiate radio frequency energy and, if not installed and used in accordance with the instructions, may cause harmful interference to radio communications. However, there is no guarantee that interference will not occur in a particular installation. If this equipment does cause harmful interference to radio or television reception, which can be determined by turning the equipment off and on, the user is encouraged to try to correct the interference by one or more of the following measures:

- Reorient or relocate the receiving antenna.
- Increase the separation between the equipment and receiver.
- Connect the equipment into an outlet on a circuit different from that to which the receiver is connected.
- Consult the dealer or an experienced radio/TV technician for help.

This device complies with part 15 of the FCC Rules. Operation is subject to the following two conditions:(1) This device may not cause harmful interference, and (2) this device must accept any interference received, including interference that may cause undesired operation.

Any Changes or modifications not expressly approved by the party responsible for compliance could void the user's authority to operate the equipment.

This equipment complies with FCC radiation exposure limits set forth for an uncontrolled environment. This equipment should be installed and operated with minimum distance 20cm between the radiator & your body.