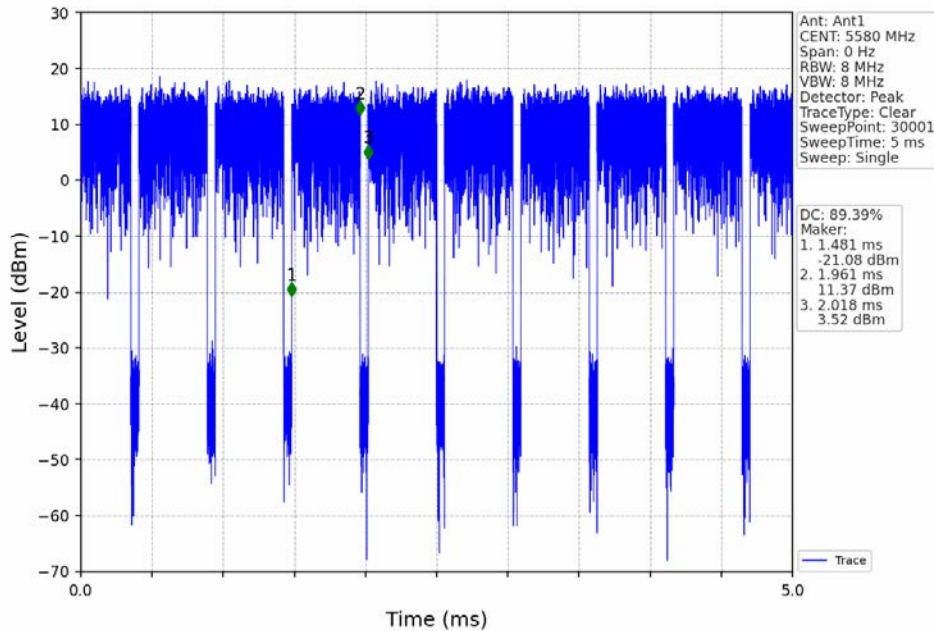
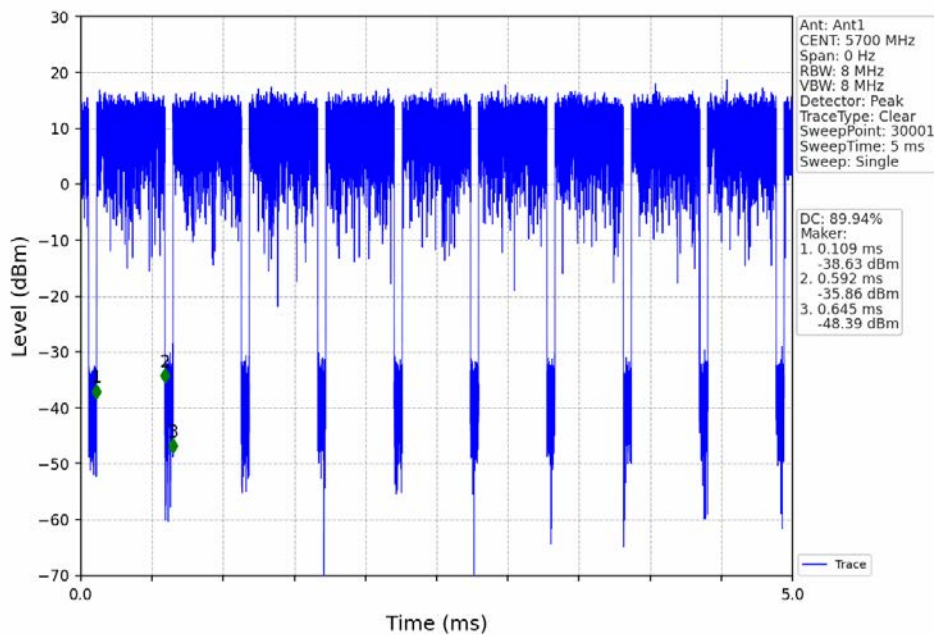


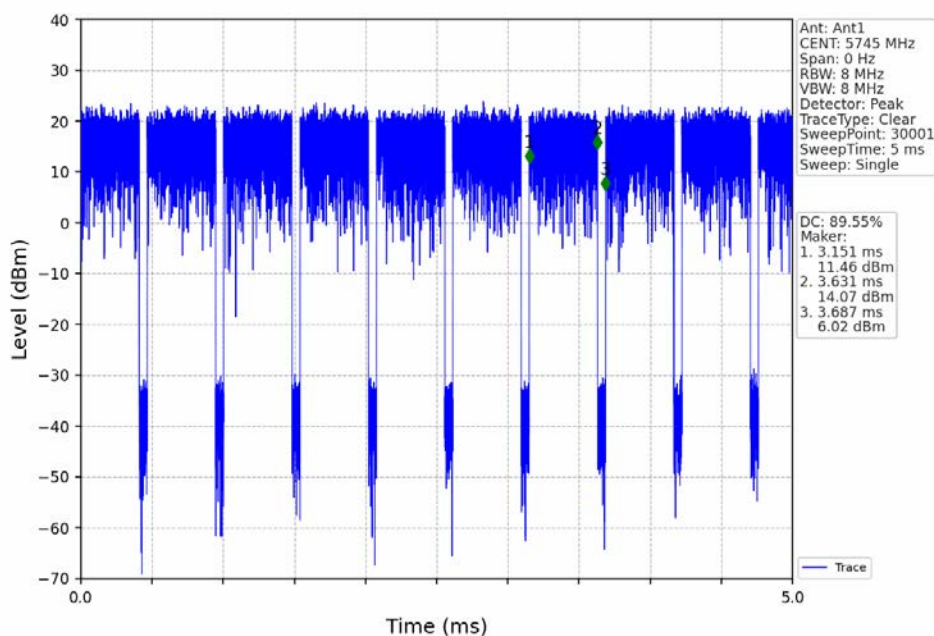
802.11ac(VHT20)\_MCH\_5580MHz\_Ant1\_NTNV



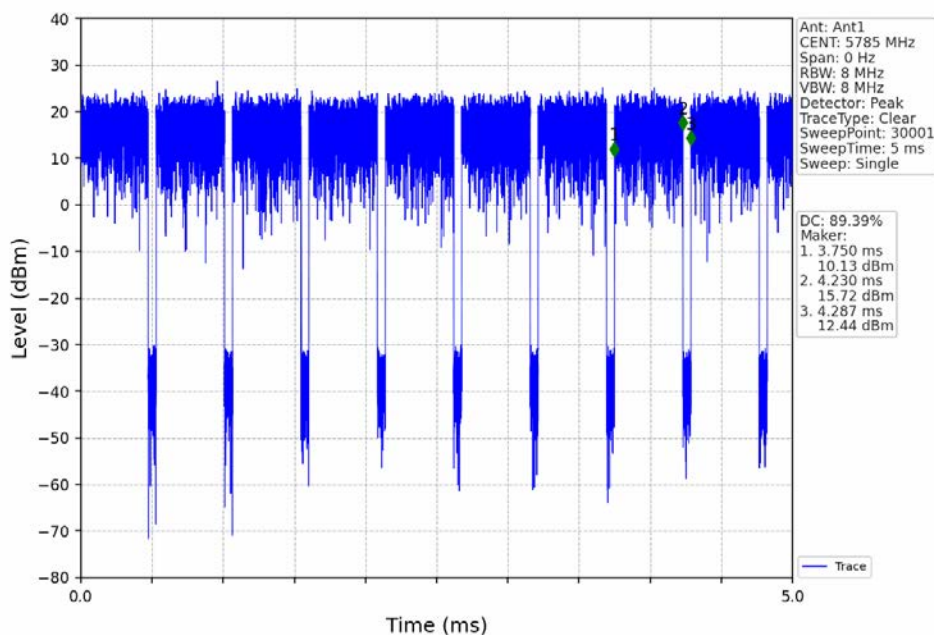
802.11ac(VHT20)\_HCH\_5700MHz\_Ant1\_NTNV



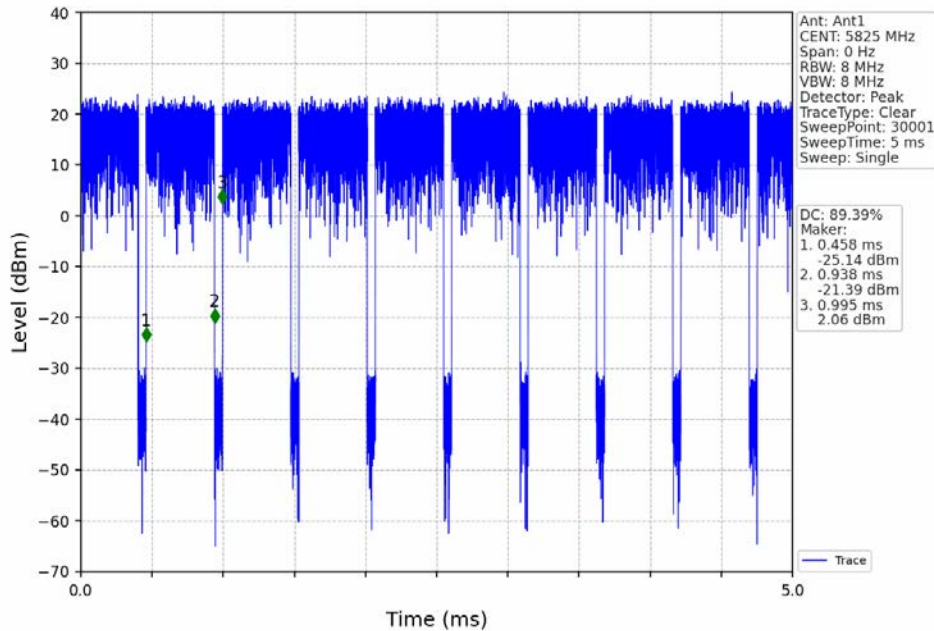
802.11ac(VHT20)\_LCH\_5745MHz\_Ant1\_NTNV



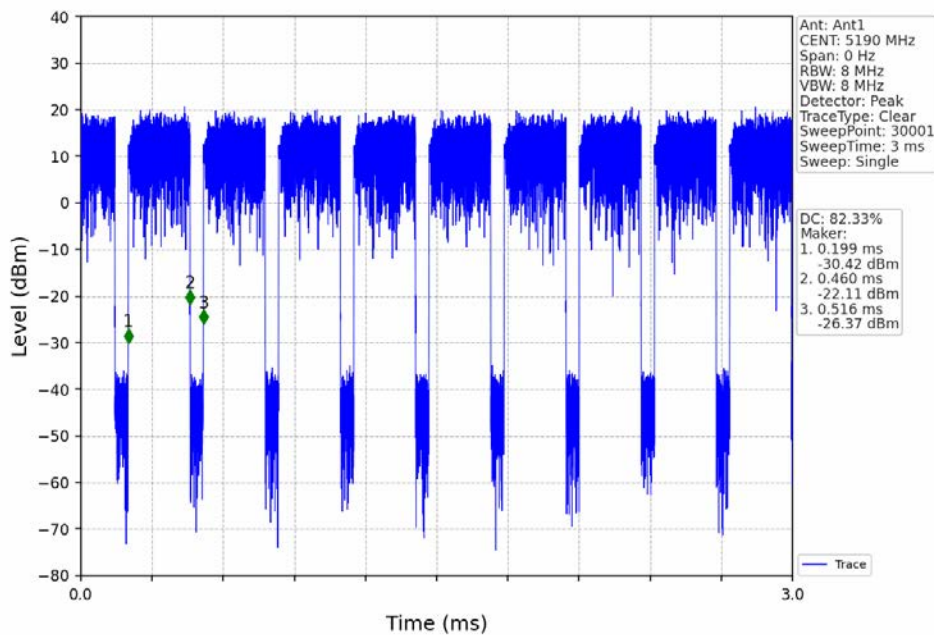
802.11ac(VHT20)\_MCH\_5785MHz\_Ant1\_NTNV



802.11ac(VHT20)\_HCH\_5825MHz\_Ant1\_NTNV

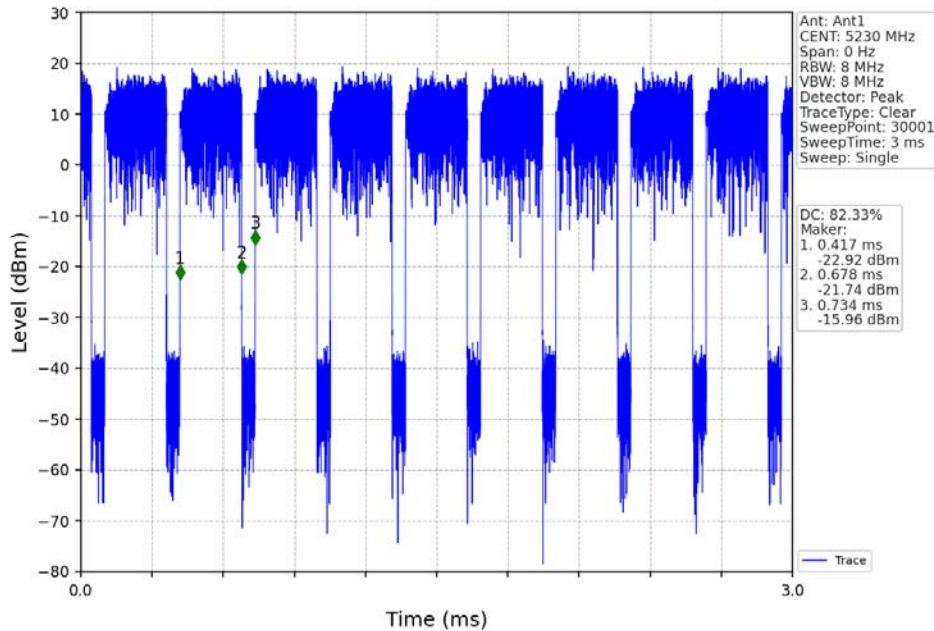


802.11ac(VHT40)\_LCH\_5190MHz\_Ant1\_NTNV

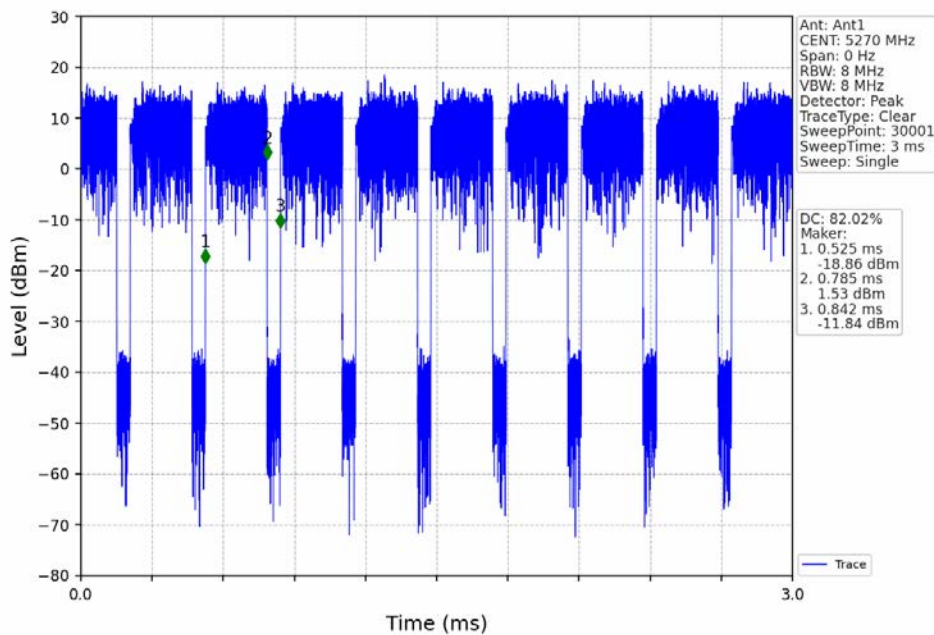




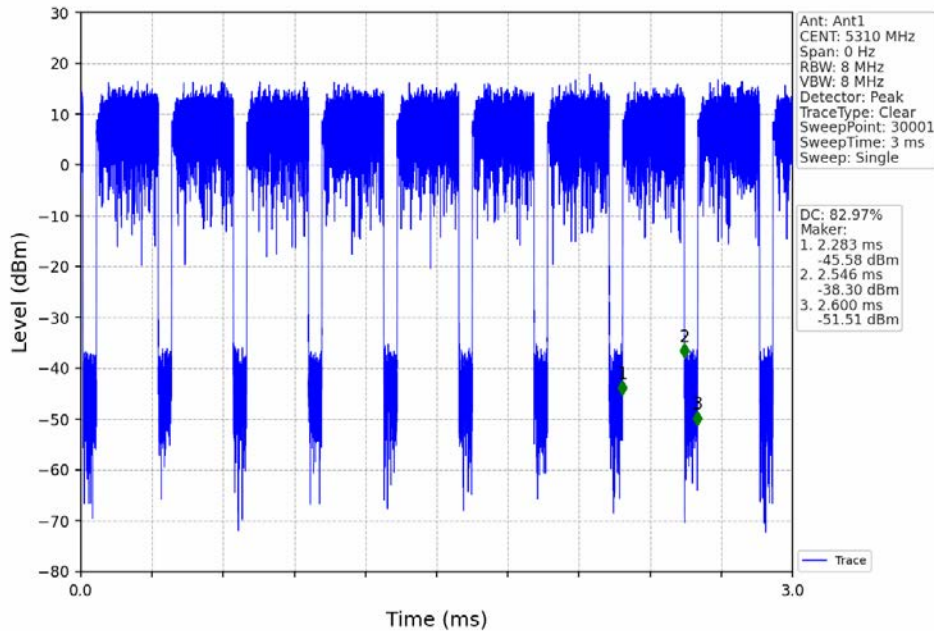
802.11ac(VHT40)\_HCH\_5230MHz\_Ant1\_NTNV



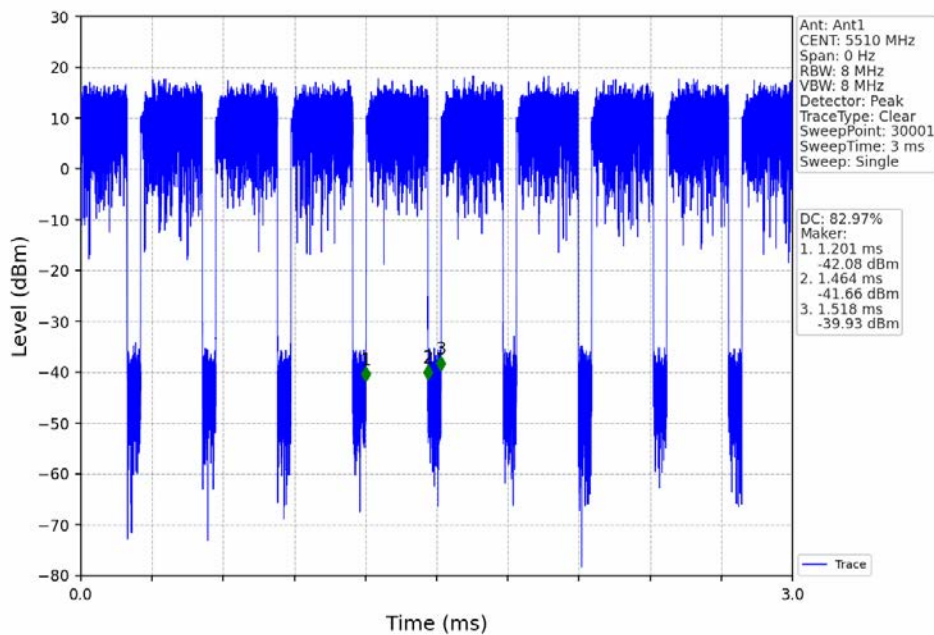
802.11ac(VHT40)\_LCH\_5270MHz\_Ant1\_NTNV



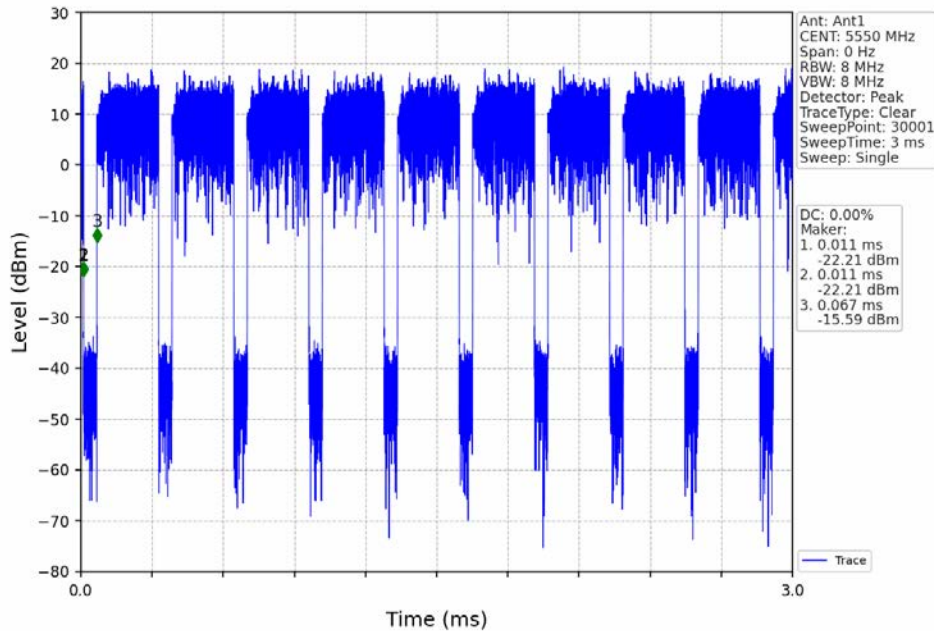
802.11ac(VHT40)\_HCH\_5310MHz\_Ant1\_NTNV



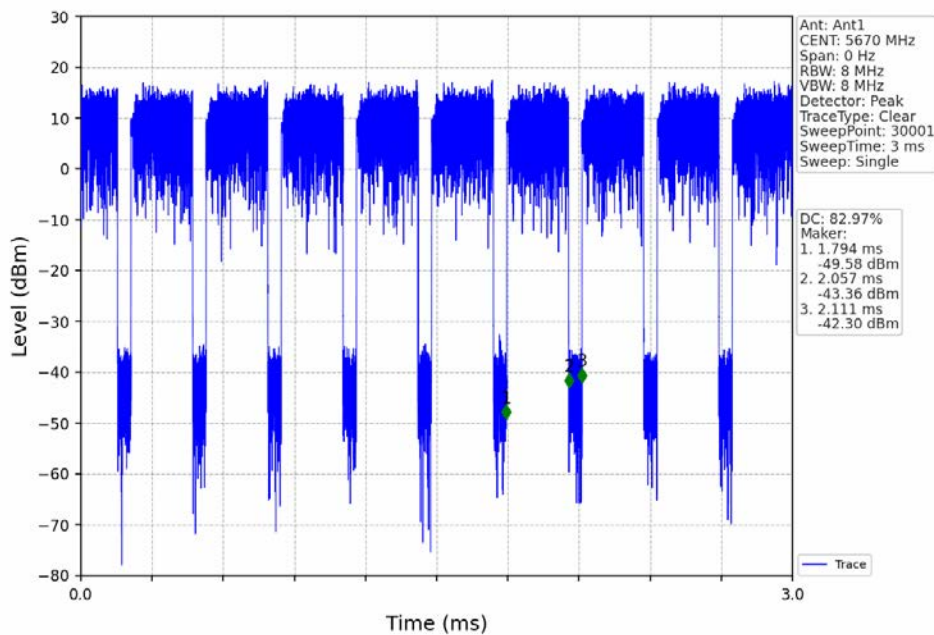
802.11ac(VHT40)\_LCH\_5510MHz\_Ant1\_NTNV



### 802.11ac(VHT40)\_MCH\_5550MHz\_Ant1\_NTNV

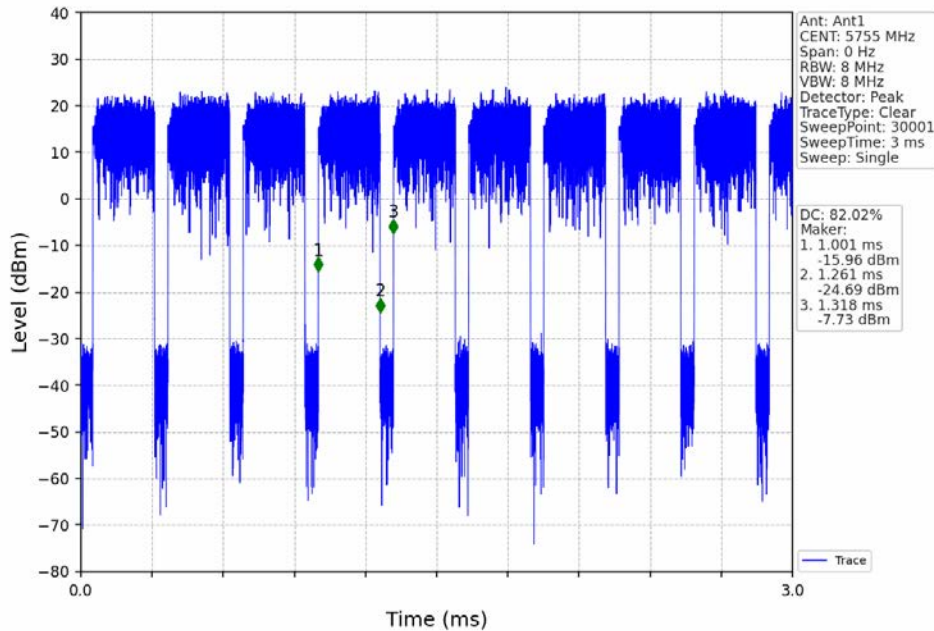


### 802.11ac(VHT40)\_HCH\_5670MHz\_Ant1\_NTNV

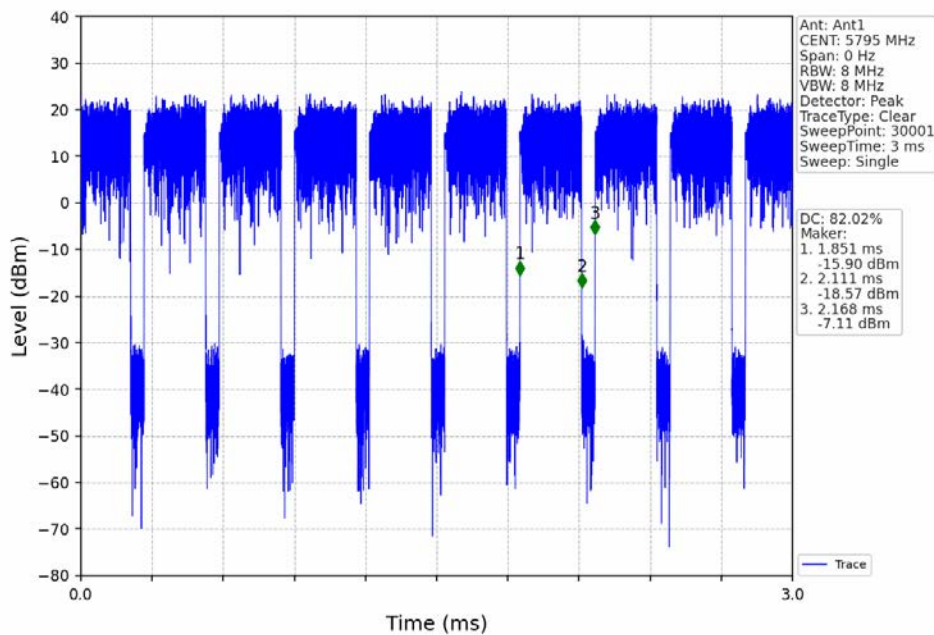




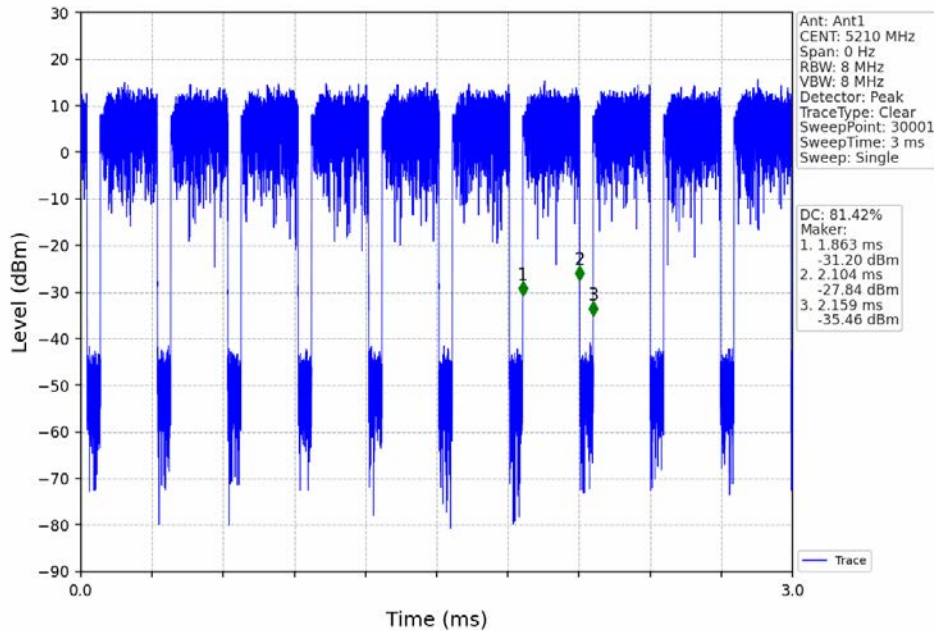
802.11ac(VHT40)\_LCH\_5755MHz\_Ant1\_NTNV



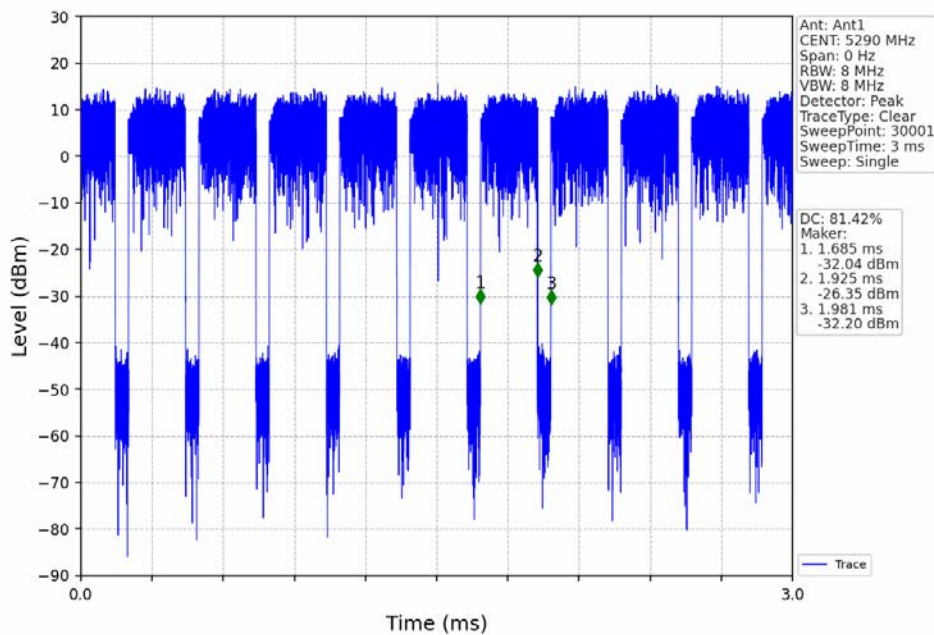
802.11ac(VHT40)\_HCH\_5795MHz\_Ant1\_NTNV



802.11ac(VHT80)\_MCH\_5210MHz\_Ant1\_NTNV

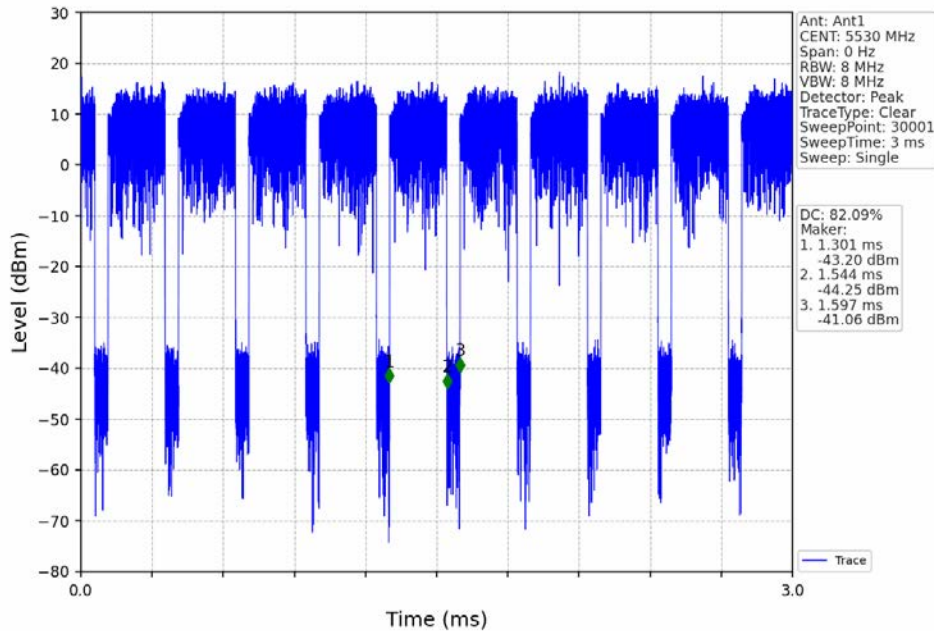


802.11ac(VHT80)\_MCH\_5290MHz\_Ant1\_NTNV

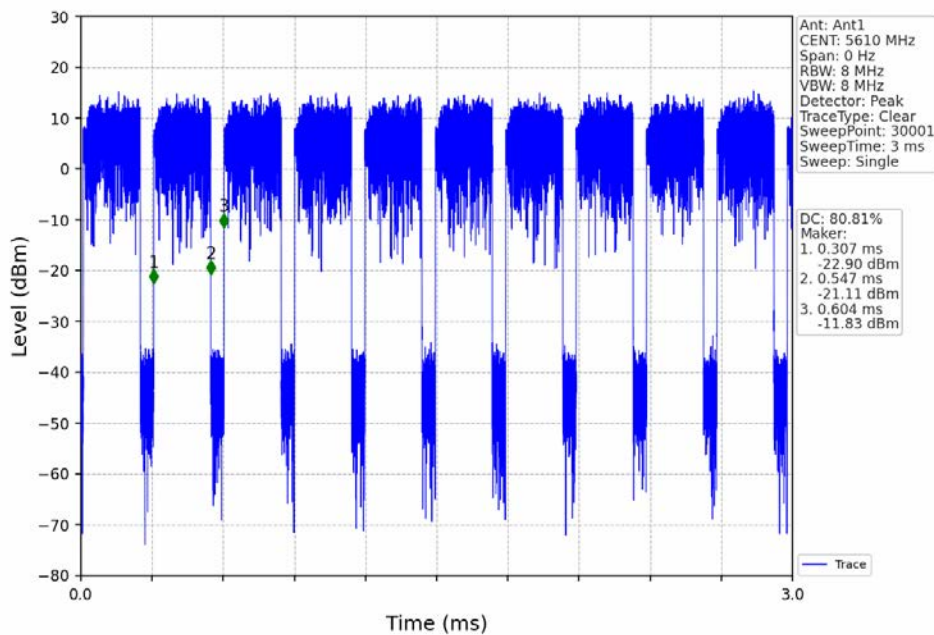




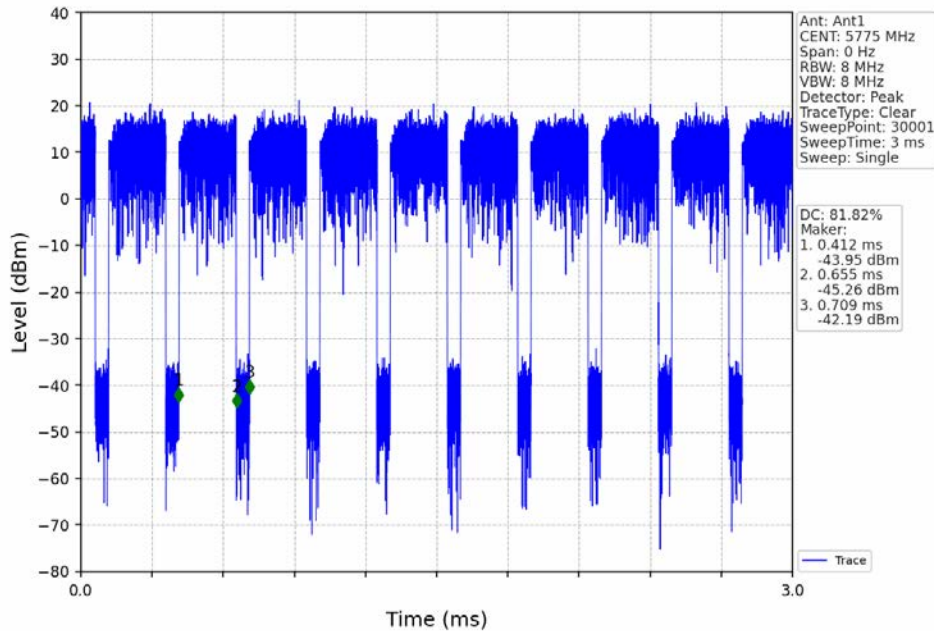
802.11ac(VHT80)\_LCH\_5530MHz\_Ant1\_NTNV



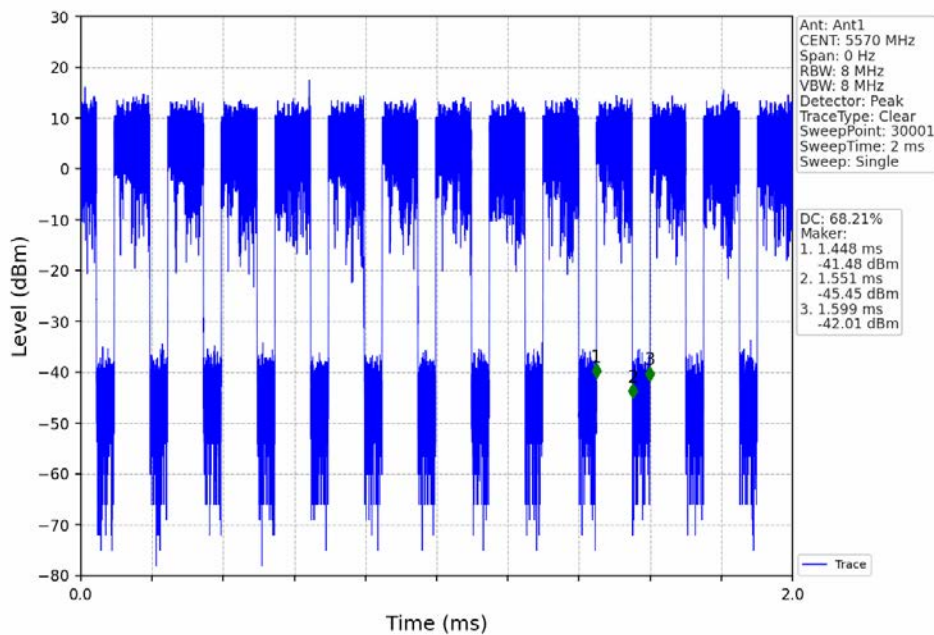
802.11ac(VHT80)\_HCH\_5610MHz\_Ant1\_NTNV



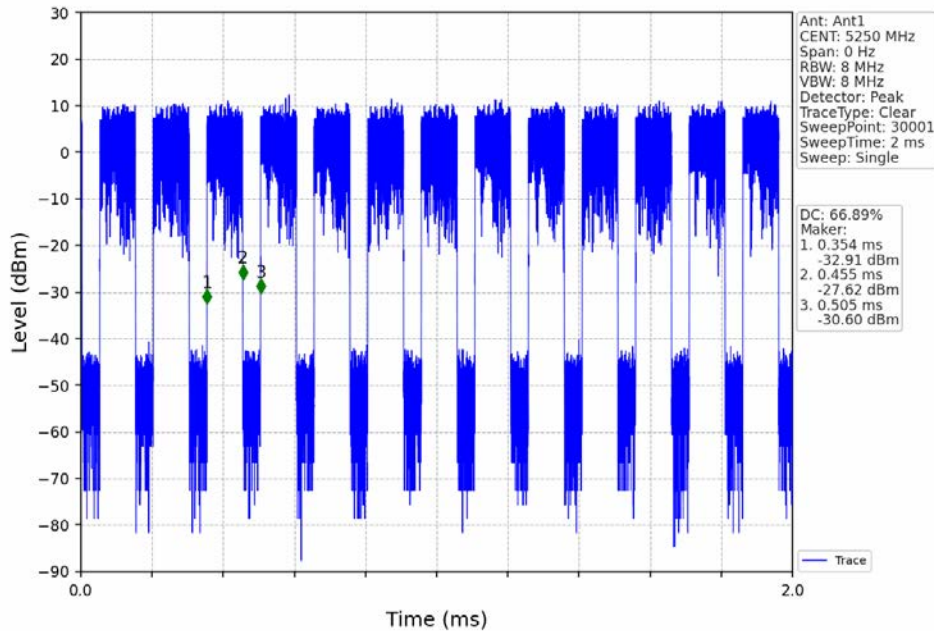
802.11ac(VHT80)\_MCH\_5775MHz\_Ant1\_NTNV



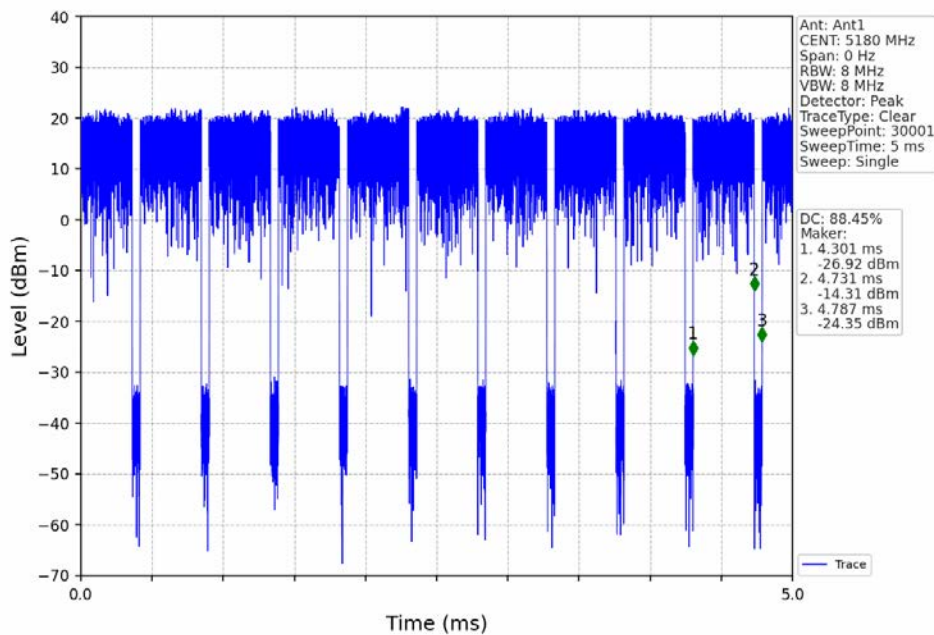
802.11ac(VHT160)\_MCH\_5570MHz\_Ant1\_NTNV



802.11ac(VHT160)\_MCH\_5250MHz\_Ant1\_NTNV

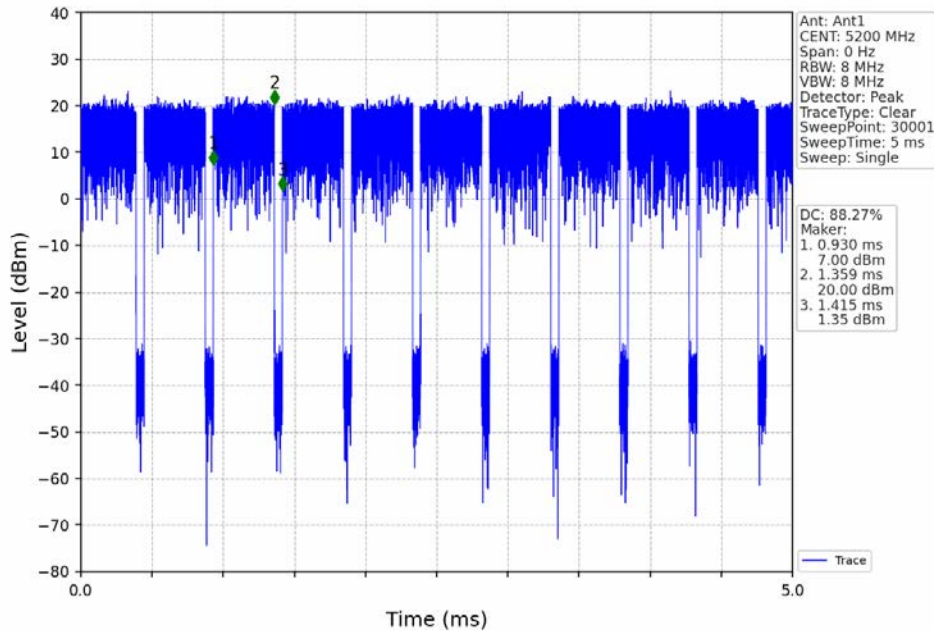


802.11ax(HEW20)\_LCH\_5180MHz\_RU242\_Left\_Ant1\_NTNV

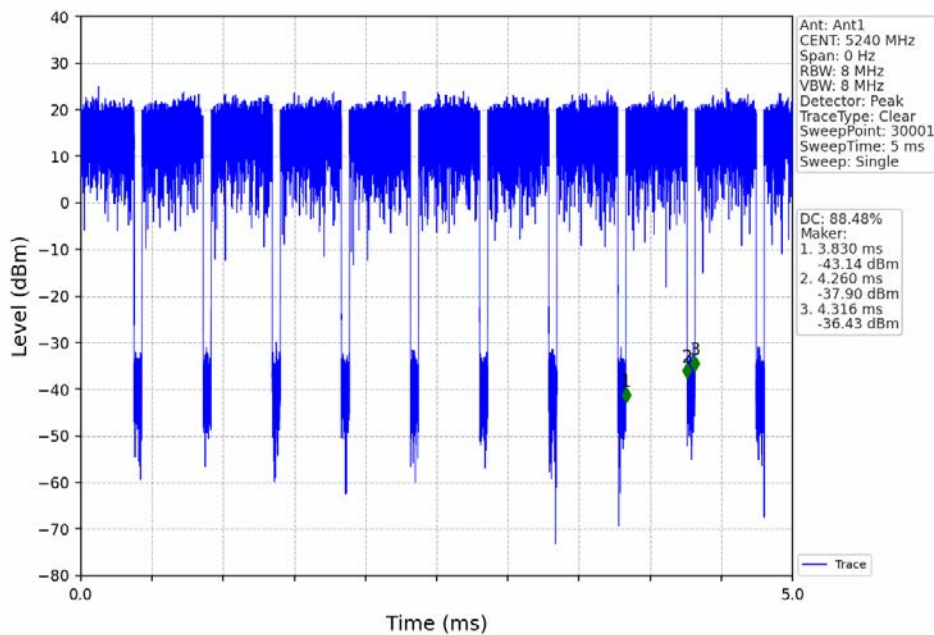




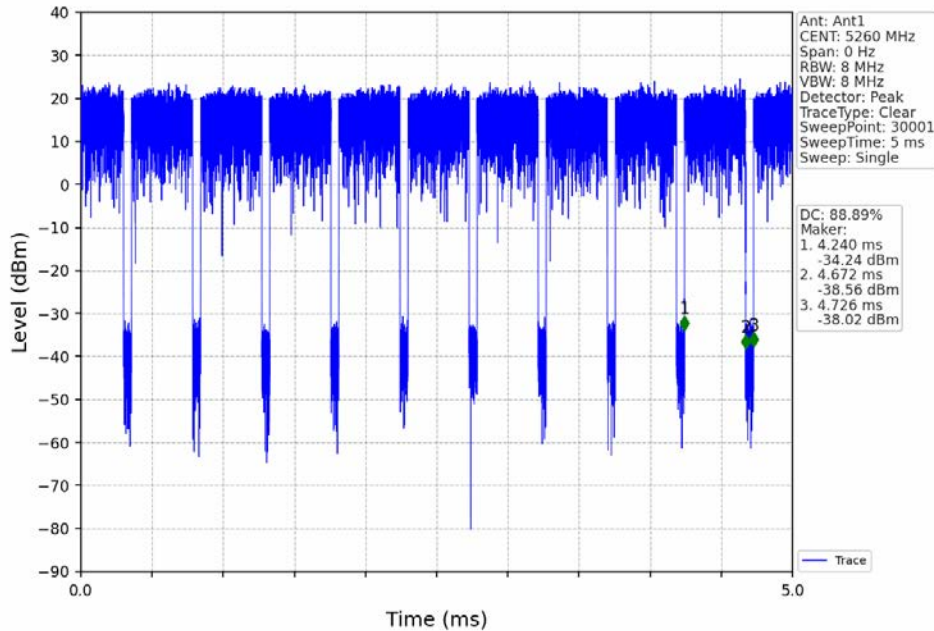
802.11ax(HEW20)\_MCH\_5200MHz\_RU242\_Left\_Ant1\_NTNV



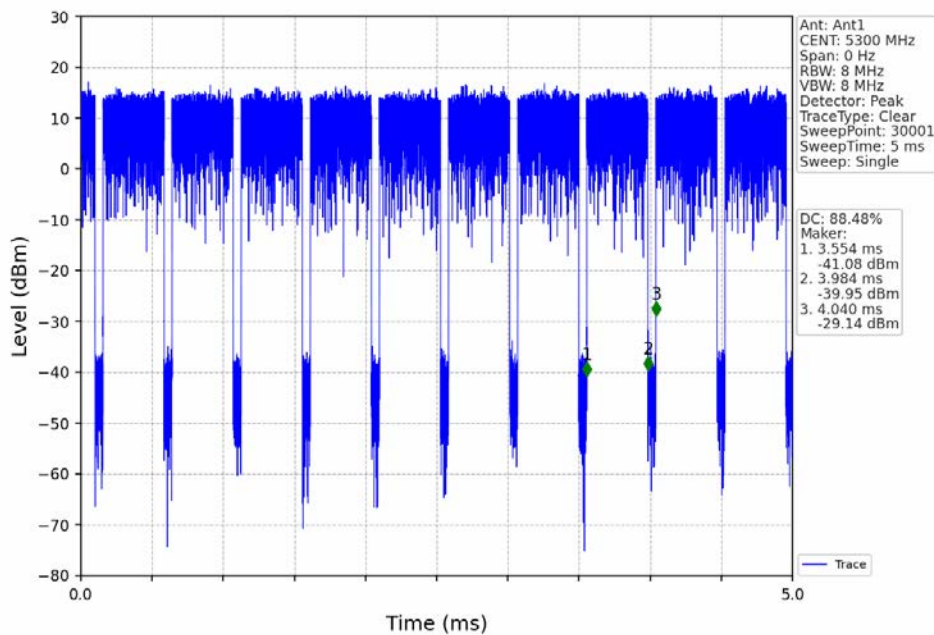
802.11ax(HEW20)\_HCH\_5240MHz\_RU242\_Left\_Ant1\_NTNV



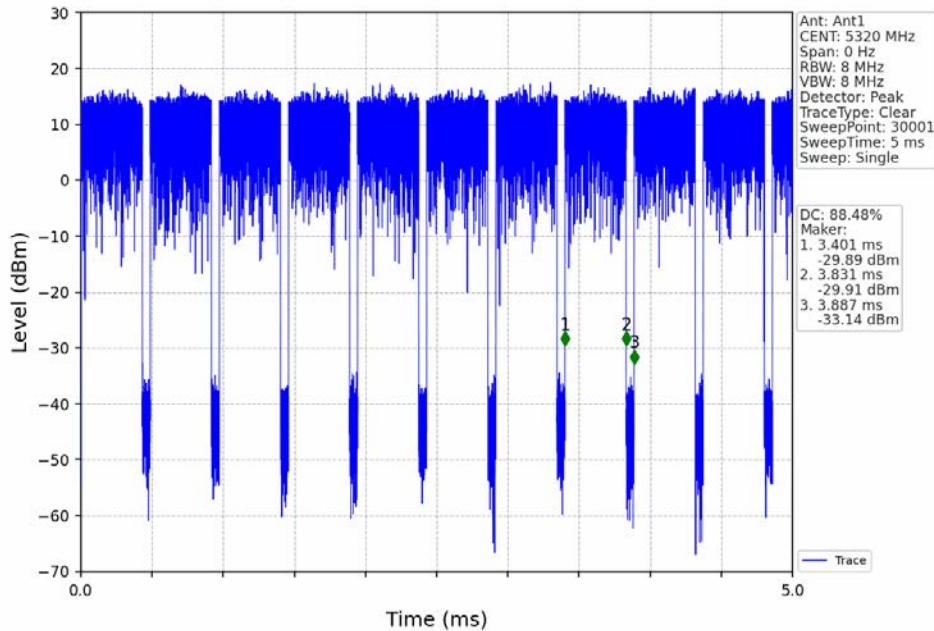
802.11ax(HEW20)\_LCH\_5260MHz\_RU242\_Left\_Ant1\_NTNV



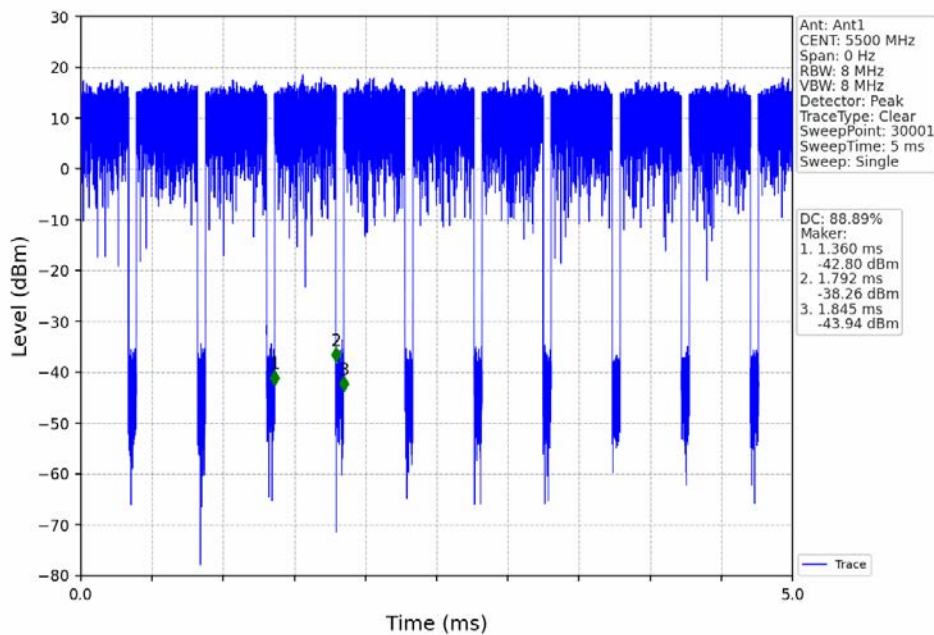
802.11ax(HEW20)\_MCH\_5300MHz\_RU242\_Left\_Ant1\_NTNV



802.11ax(HEW20)\_HCH\_5320MHz\_RU242\_Left\_Ant1\_NTNV

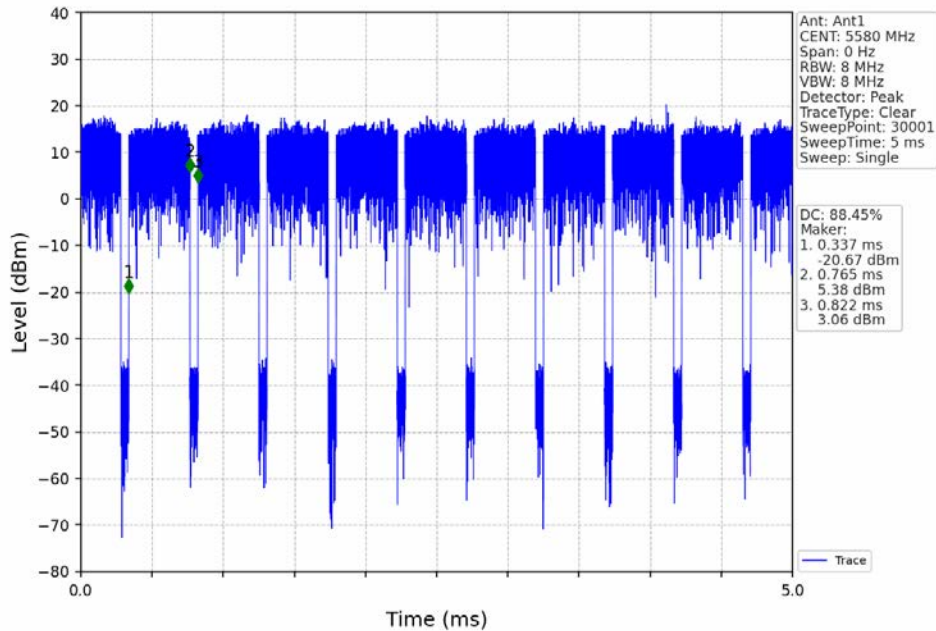


802.11ax(HEW20)\_LCH\_5500MHz\_RU242\_Left\_Ant1\_NTNV

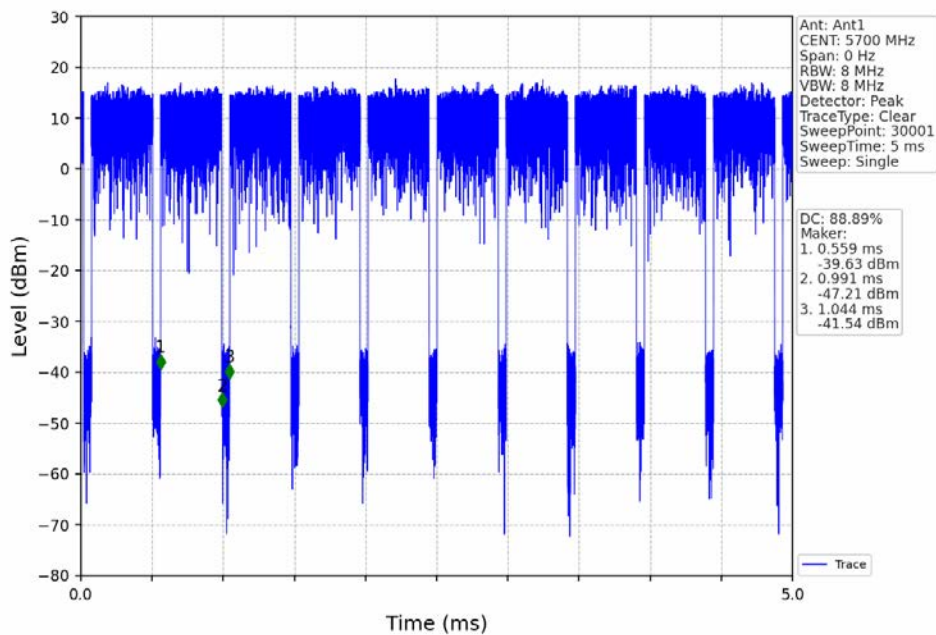




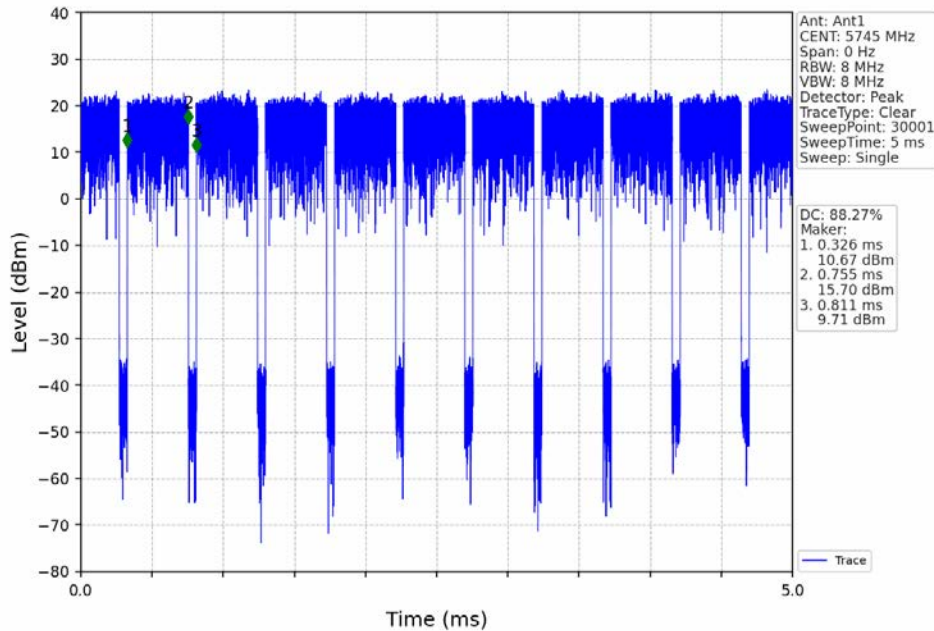
802.11ax(HEW20)\_MCH\_5580MHz\_RU242\_Left\_Ant1\_NTNV



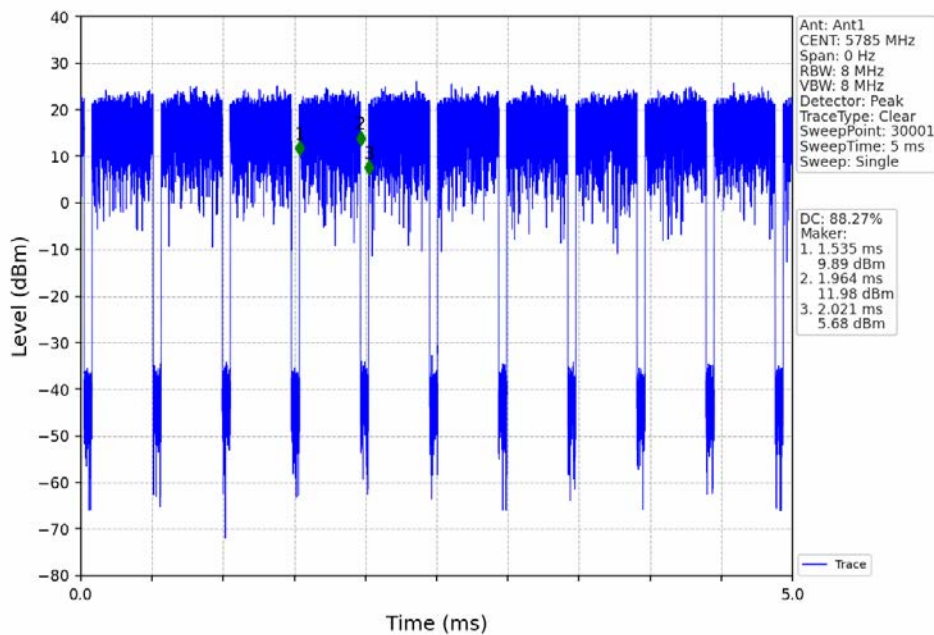
802.11ax(HEW20)\_HCH\_5700MHz\_RU242\_Left\_Ant1\_NTNV



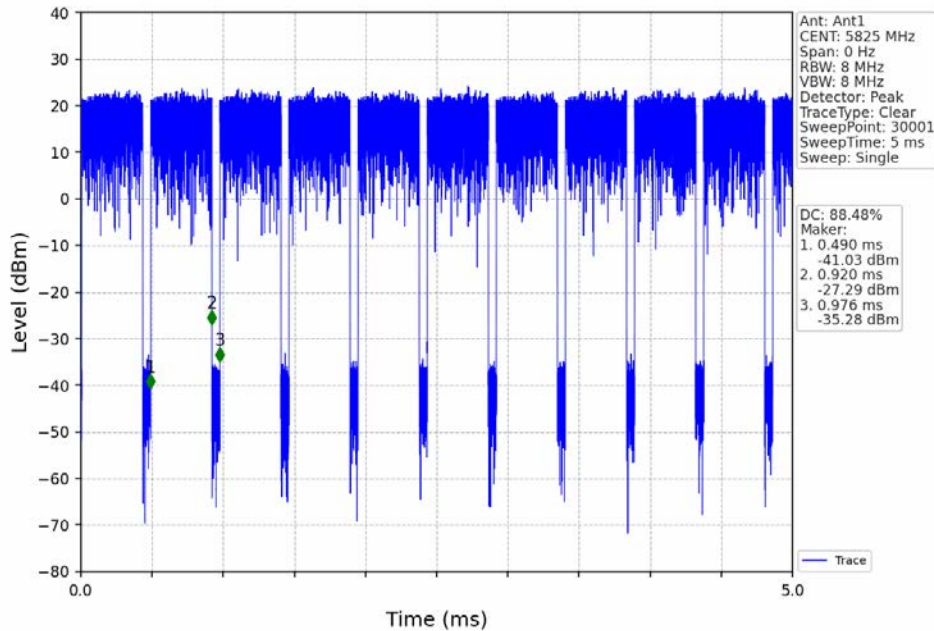
802.11ax(HEW20)\_LCH\_5745MHz\_RU242\_Left\_Ant1\_NTNV



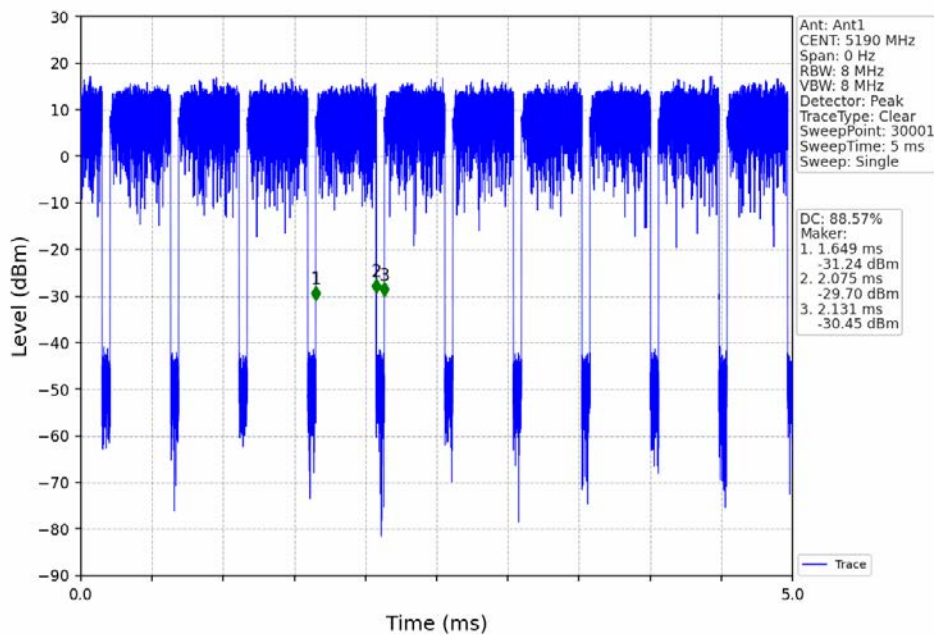
802.11ax(HEW20)\_MCH\_5785MHz\_RU242\_Left\_Ant1\_NTNV



802.11ax(HEW20)\_HCH\_5825MHz\_RU242\_Left\_Ant1\_NTNV



802.11ax(HEW40)\_LCH\_5190MHz\_RU484\_Left\_Ant1\_NTNV

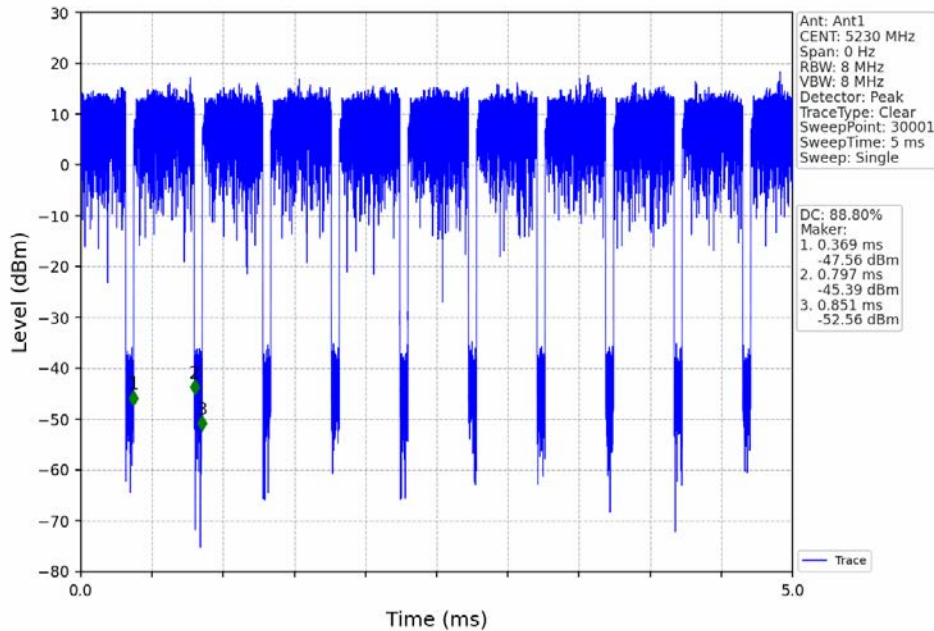


Unless otherwise agreed in writing, this document is issued by the Company subject to its General Conditions of Service printed overleaf, available on request or accessible at <https://www.sgs.com/en/Terms-and-Conditions>. Attention is drawn to the limitation of liability, indemnification and jurisdiction issues defined therein. Any holder of this document is advised that information contained hereon reflects the Company's findings at the time of its intervention only and within the limits of Client's instructions, if any. The Company's sole responsibility is to its Client and this document does not exonerate parties to a transaction from exercising all their rights and obligations under the transaction documents. This document cannot be reproduced except in full, without prior written approval of the Company. Any unauthorized alteration, forgery or falsification of the content or appearance of this document is unlawful and offenders may be prosecuted to the fullest extent of the law. Unless otherwise stated the results shown in this test report refer only to the sample(s) tested and such sample(s) are retained for 30 days only.

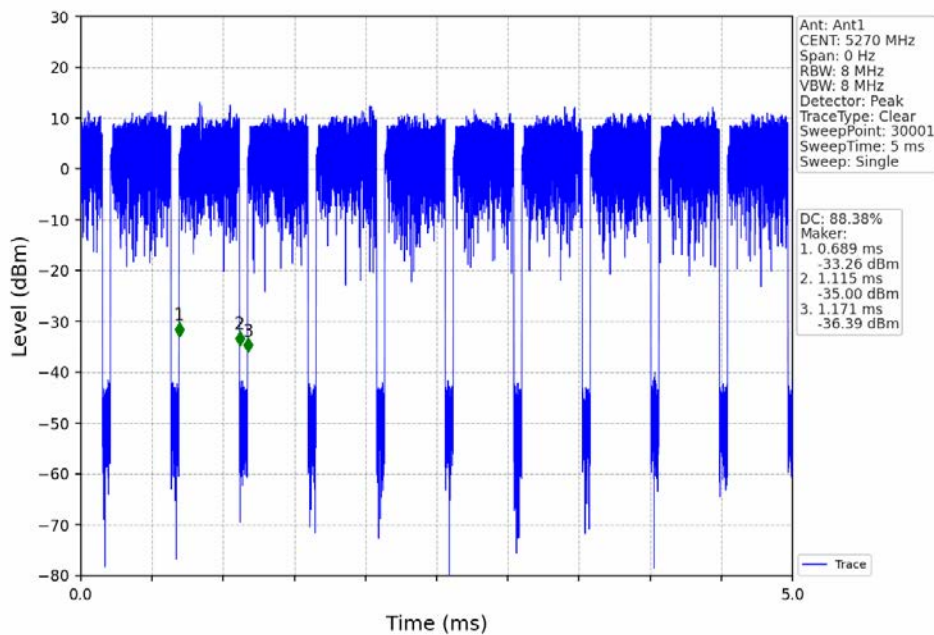
Attention: To check the authenticity of testing /inspection report & certificate, please contact us at telephone: (86-755) 8307 1443, or email: [CN.Doccheck@sgs.com](mailto:CN.Doccheck@sgs.com)  
 No.1 Workshop, M-10, Middle Section, Science & Technology Park, Nanshan District, Shenzhen, Guangdong, China 518057 t (86-755) 26012053 f (86-755) 26710594 www.sgs.com.cn  
 中国·广东·深圳市南山区科技园中区M-10栋1号厂房 邮编: 518057 t (86-755) 26012053 f (86-755) 26710594 sgs.china@sgs.com



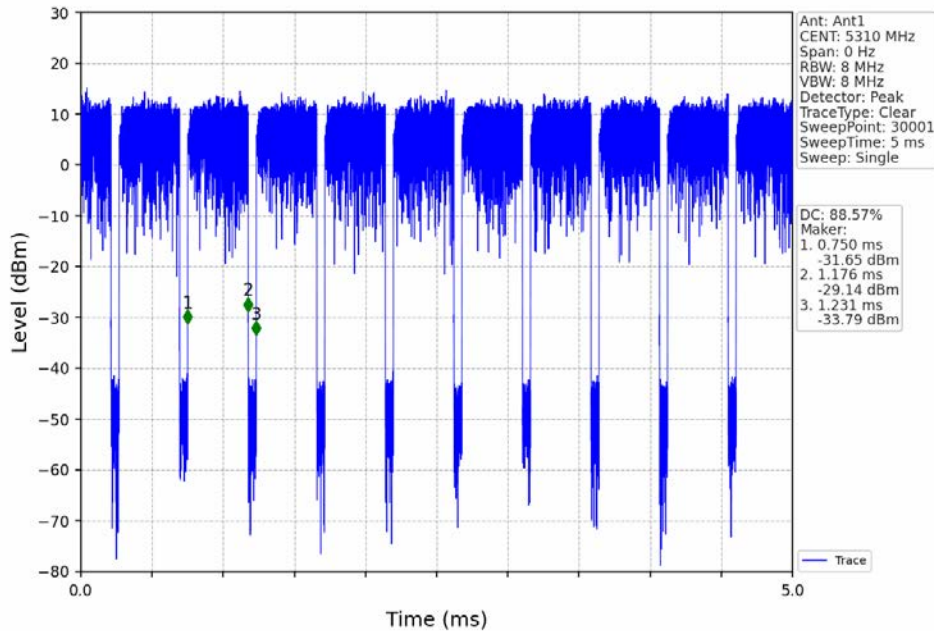
802.11ax(HEW40)\_HCH\_5230MHz\_RU484\_Left\_Ant1\_NTNV



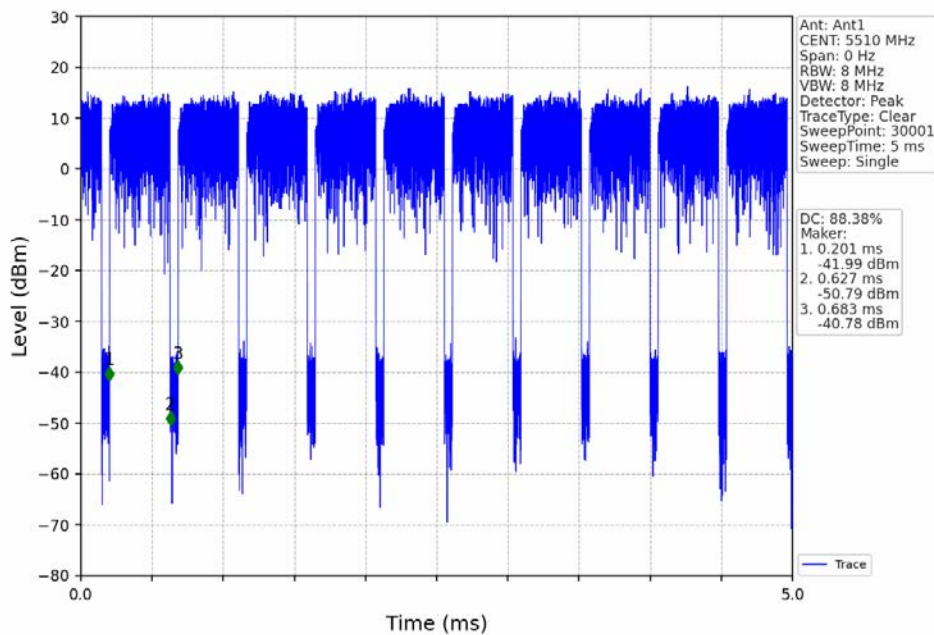
802.11ax(HEW40)\_LCH\_5270MHz\_RU484\_Left\_Ant1\_NTNV



802.11ax(HEW40)\_HCH\_5310MHz\_RU484\_Left\_Ant1\_NTNV



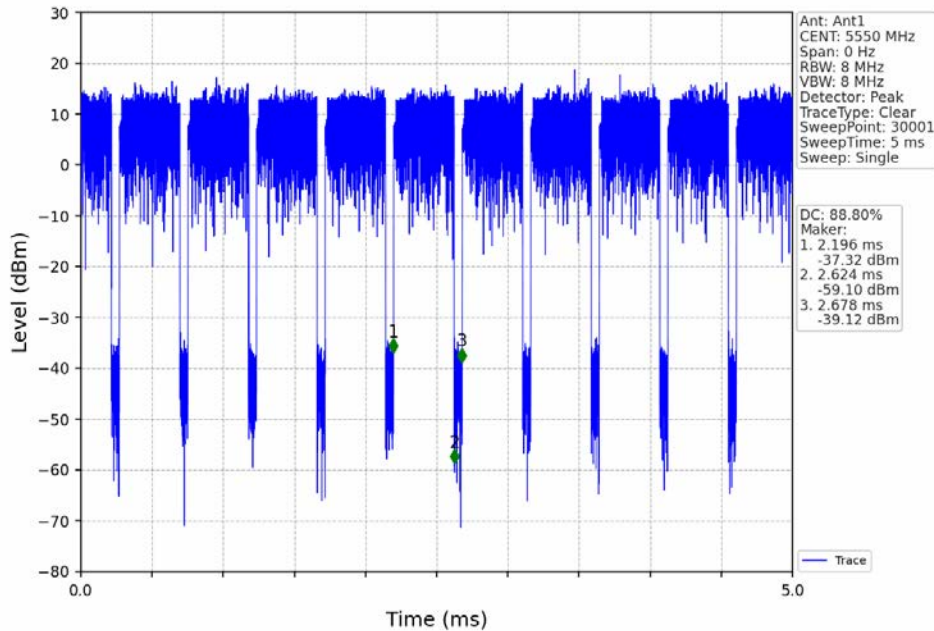
802.11ax(HEW40)\_LCH\_5510MHz\_RU484\_Left\_Ant1\_NTNV



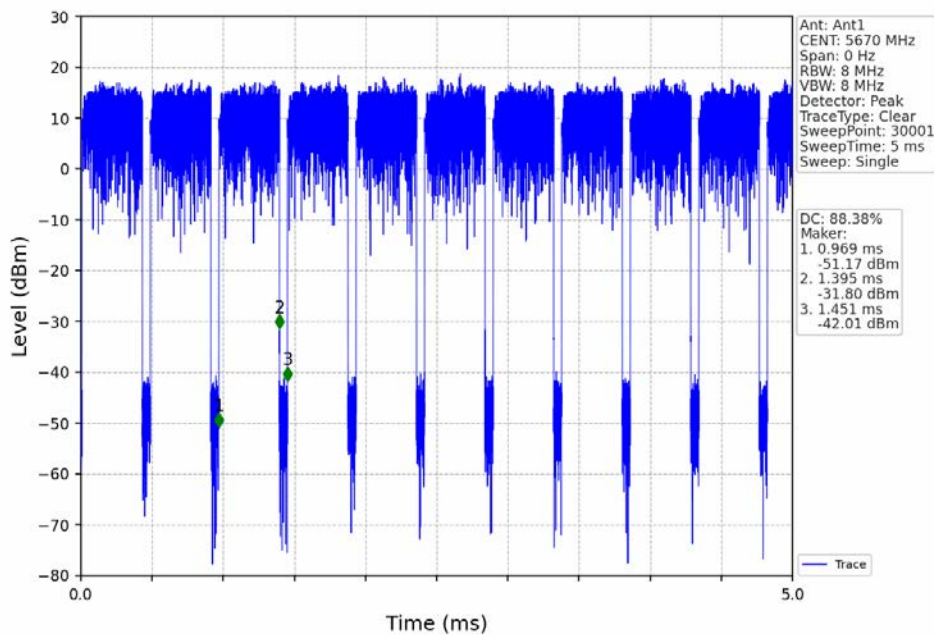
Unless otherwise agreed in writing, this document is issued by the Company subject to its General Conditions of Service printed overleaf, available on request or accessible at <https://www.sgs.com/en/Terms-and-Conditions>. Attention is drawn to the limitation of liability, indemnification and jurisdiction issues defined therein. Any holder of this document is advised that information contained hereon reflects the Company's findings at the time of its intervention only and within the limits of Client's instructions, if any. The Company's sole responsibility is to its Client and this document does not exonerate parties to a transaction from exercising all their rights and obligations under the transaction documents. This document cannot be reproduced except in full, without prior written approval of the Company. Any unauthorized alteration, forgery or falsification of the content or appearance of this document is unlawful and offenders may be prosecuted to the fullest extent of the law. Unless otherwise stated the results shown in this test report refer only to the sample(s) tested and such sample(s) are retained for 30 days only.

Attention: To check the authenticity of testing /inspection report & certificate, please contact us at telephone: (86-755) 8307 1443, or email: [CN.Doccheck@sgs.com](mailto:CN.Doccheck@sgs.com)

802.11ax(HEW40)\_MCH\_5550MHz\_RU484\_Left\_Ant1\_NTNV

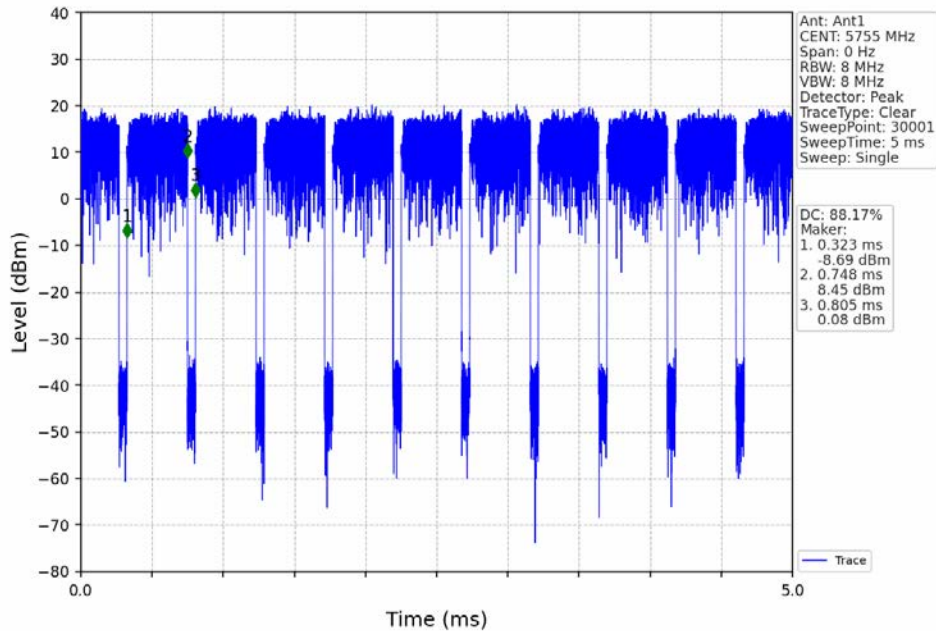


802.11ax(HEW40)\_HCH\_5670MHz\_RU484\_Left\_Ant1\_NTNV

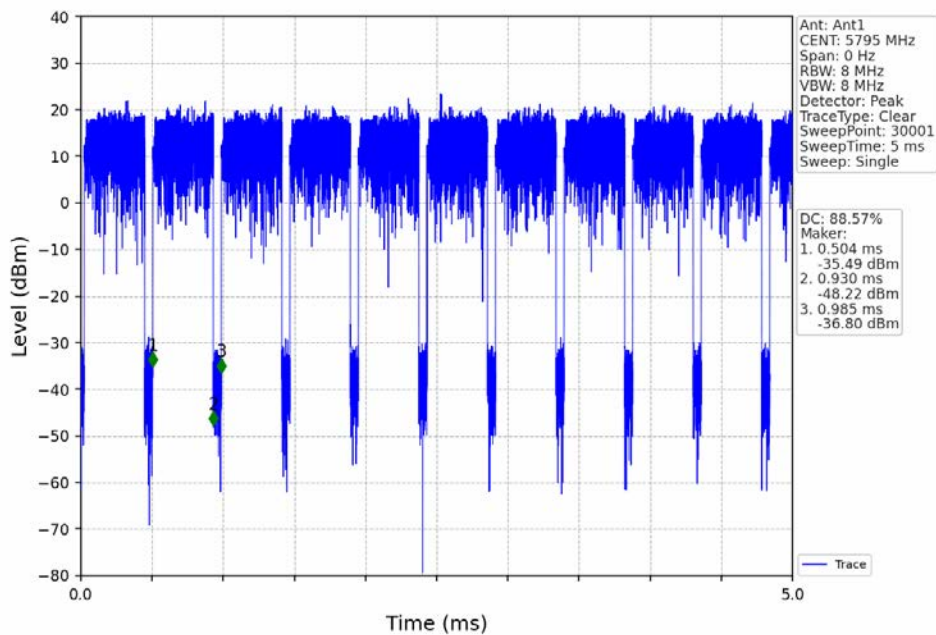




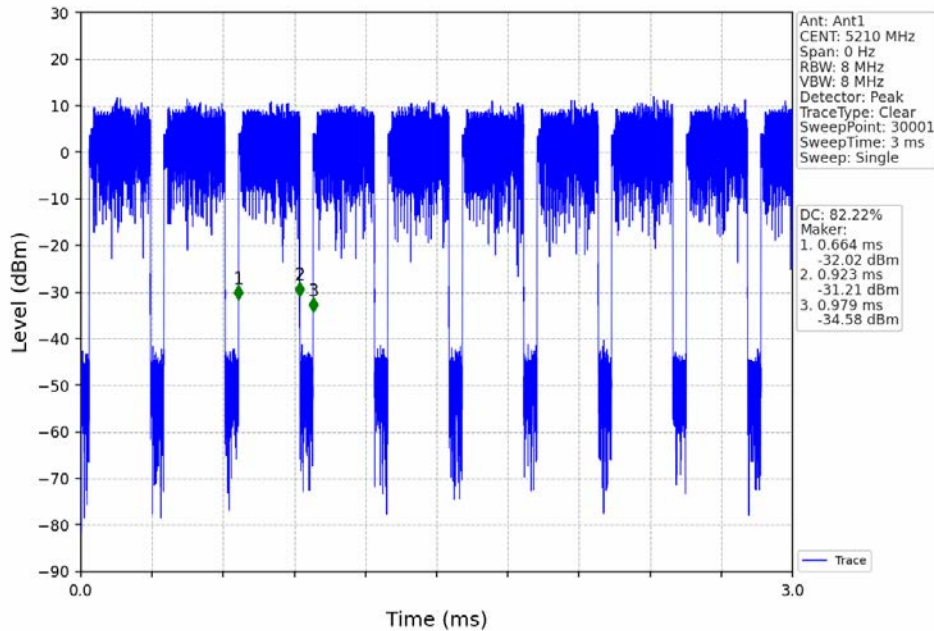
802.11ax(HEW40)\_LCH\_5755MHz\_RU484\_Left\_Ant1\_NTNV



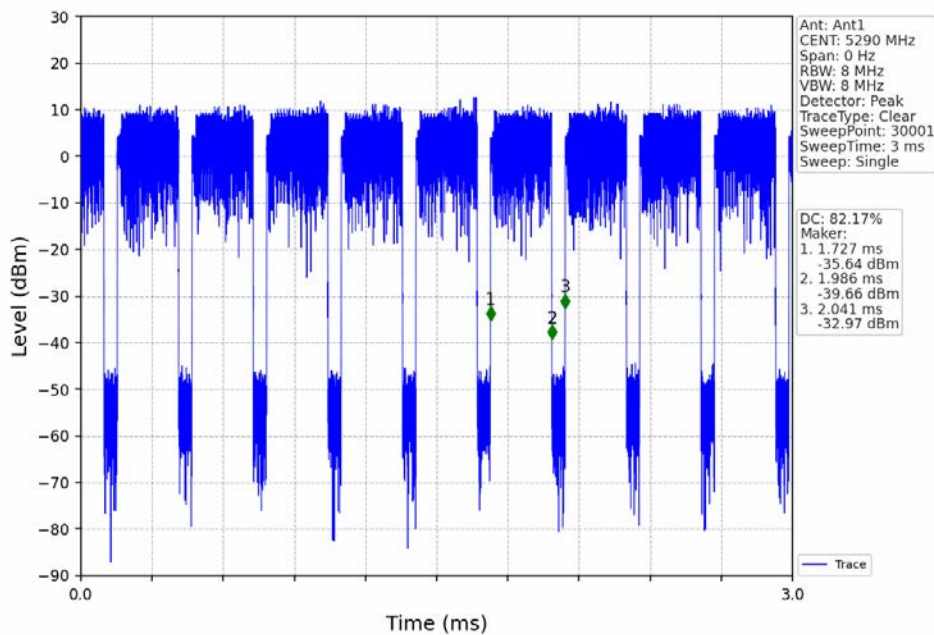
802.11ax(HEW40)\_HCH\_5795MHz\_RU484\_Left\_Ant1\_NTNV



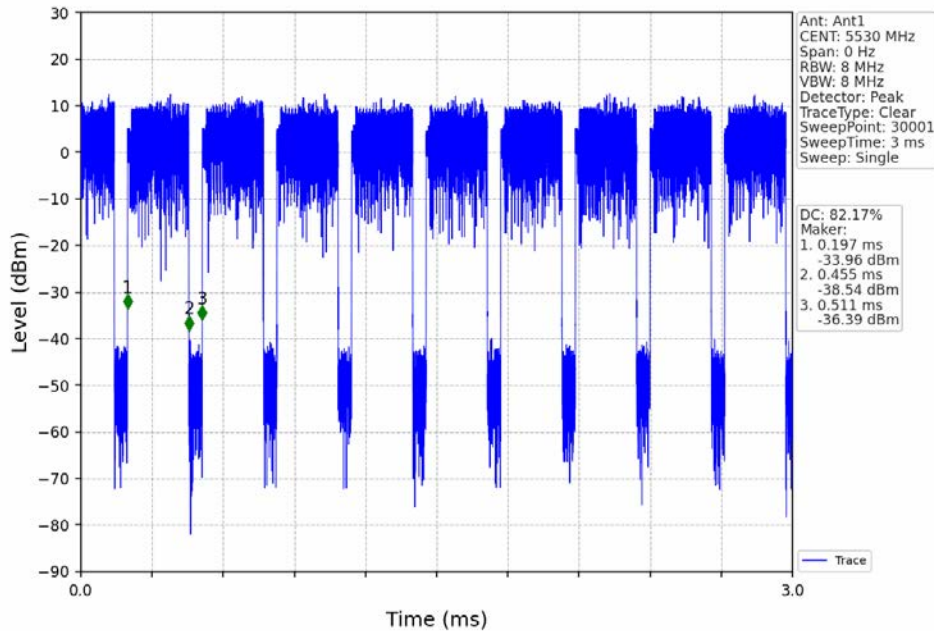
### 802.11ax(HEW80)\_MCH\_5210MHz\_RU996\_Left\_Ant1\_NTNV



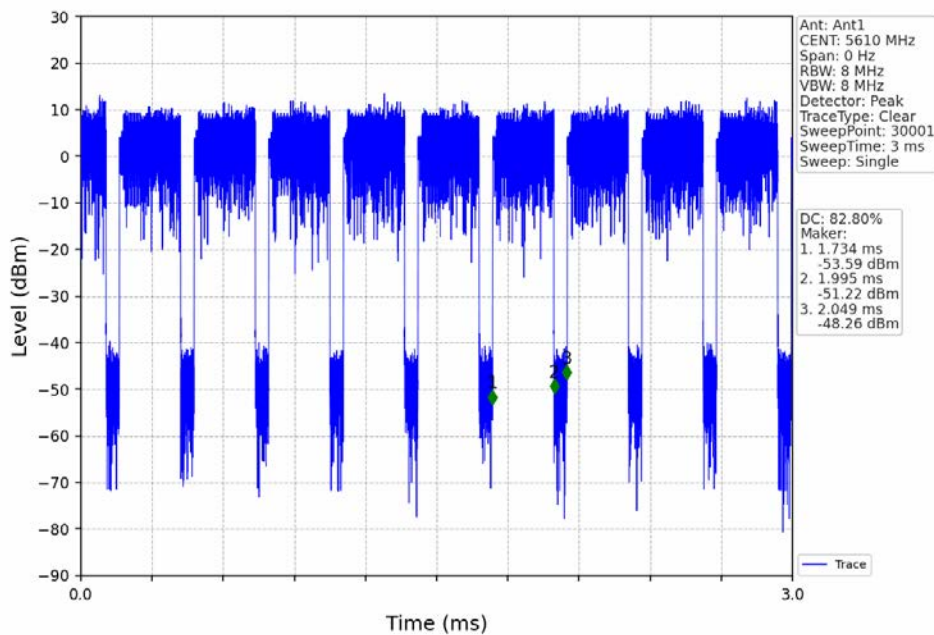
### 802.11ax(HEW80)\_MCH\_5290MHz\_RU996\_Left\_Ant1\_NTNV



802.11ax(HEW80)\_LCH\_5530MHz\_RU996\_Left\_Ant1\_NTNV



802.11ax(HEW80)\_HCH\_5610MHz\_RU996\_Left\_Ant1\_NTNV



Unless otherwise agreed in writing, this document is issued by the Company subject to its General Conditions of Service printed overleaf, available on request or accessible at <https://www.sgs.com/en/Terms-and-Conditions>. Attention is drawn to the limitation of liability, indemnification and jurisdiction issues defined therein. Any holder of this document is advised that information contained hereon reflects the Company's findings at the time of its intervention only and within the limits of Client's instructions, if any. The Company's sole responsibility is to its Client and this document does not exonerate parties to a transaction from exercising all their rights and obligations under the transaction documents. This document cannot be reproduced except in full, without prior written approval of the Company. Any unauthorized alteration, forgery or falsification of the content or appearance of this test report is unlawful and offenders may be prosecuted to the fullest extent of the law. Unless otherwise stated the results shown in this test report refer only to the sample(s) tested and such sample(s) are retained for 30 days only.

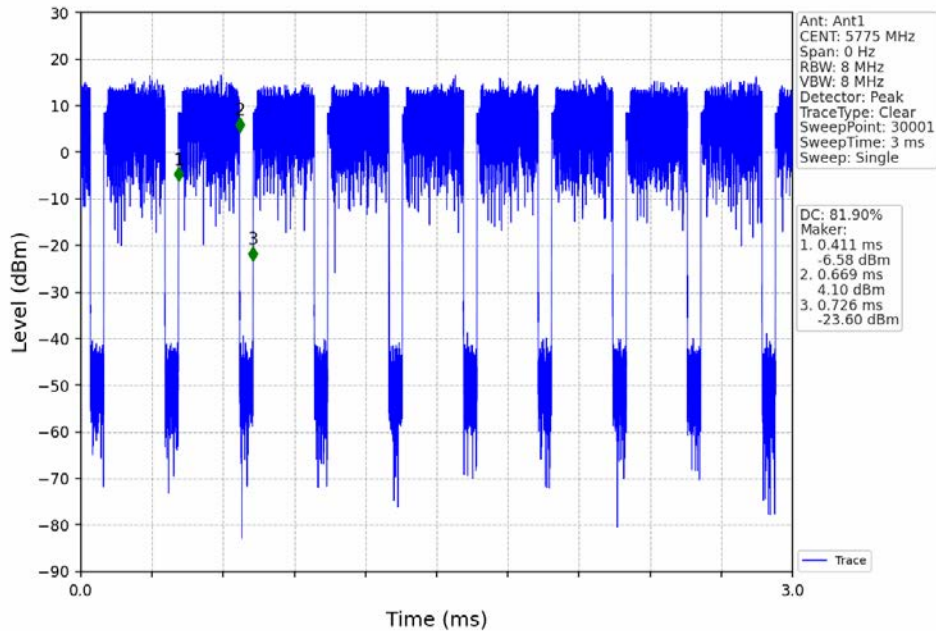
Attention: To check the authenticity of testing / inspection report & certificate, please contact us at telephone: (86-755) 8307 1443, or email: [CN.Doccheck@sgs.com](mailto:CN.Doccheck@sgs.com)

SGS-CSTC Standards Technical Services Co., Ltd.  
Shenzhen Branch (SZEMC) Laboratory

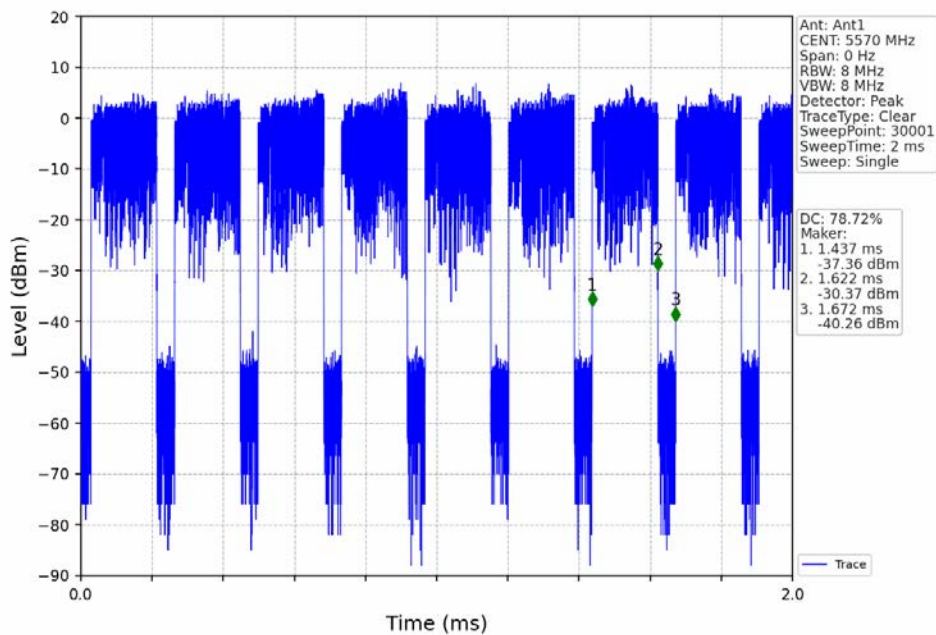
No. 1 Workshop, M-10, Middle Section, Science & Technology Park, Nanshan District, Shenzhen, Guangdong, China 518057 t (86-755) 26012053 f (86-755) 26710594 www.sgs.com.cn  
中国·广东·深圳市南山区科技园中区M-10栋1号厂房 邮编: 518057 t (86-755) 26012053 f (86-755) 26710594 sgs.china@sgs.com



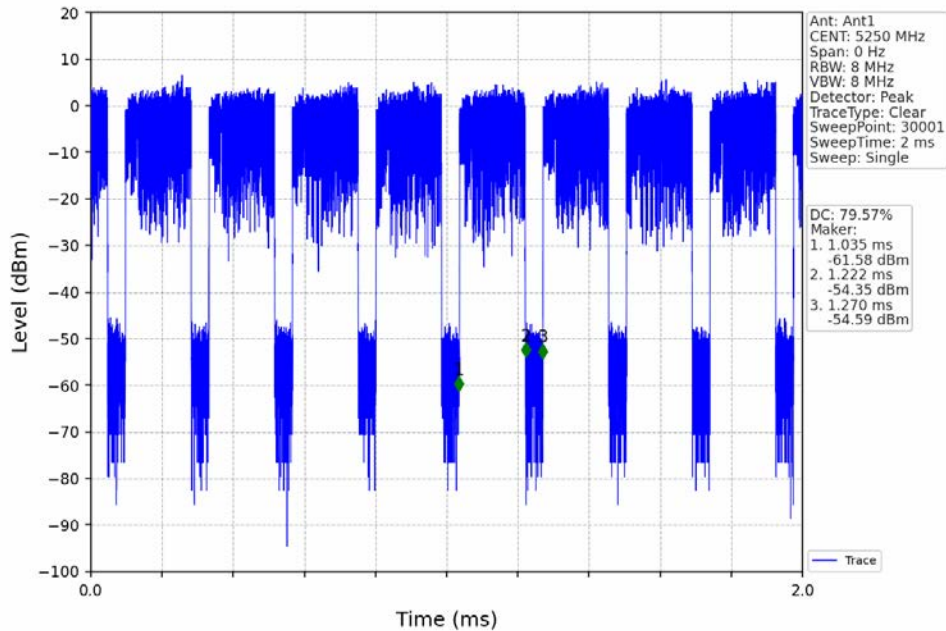
802.11ax(HEW80)\_MCH\_5775MHz\_RU996\_Left\_Ant1\_NTNV



802.11ax(HEW160)\_MCH\_5570MHz\_2xRU996\_Left\_Ant1\_NTNV



### 802.11ax(HEW160)\_MCH\_5250MHz\_2xRU996\_Left\_Ant1\_NTNV



## 2. Bandwidth

### 2.1 6dB BW

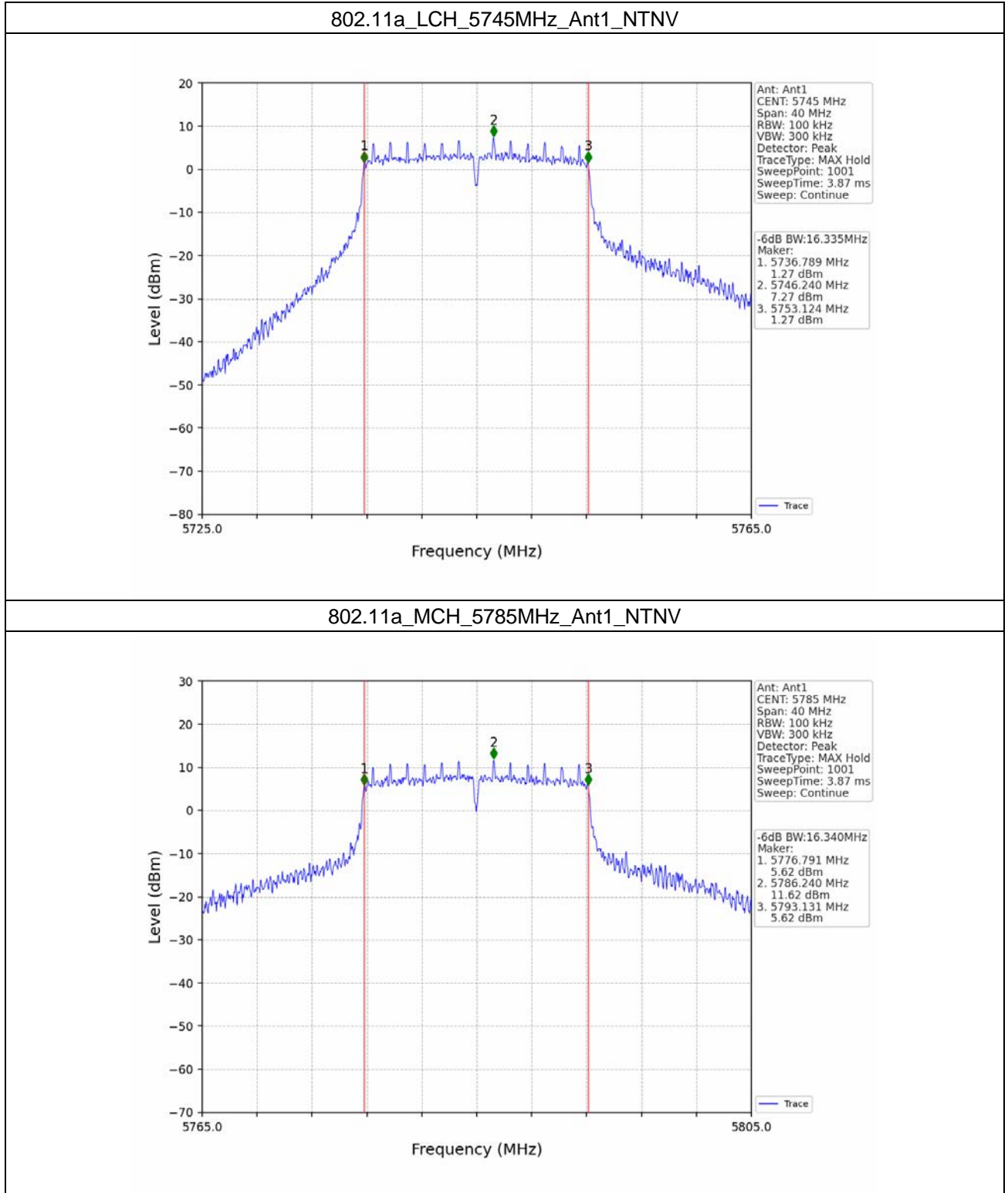
#### 2.1.1 Test Result

Mode	TX Type	Frequency (MHz)	RU	RU Pos	ANT	6dB Bandwidth (MHz)		Verdict
						Result	Limit	
802.11a	MIMO	5745	/	/	1	16.335	$\geq 0.5$	Pass
		5785	/	/	1	16.340	$\geq 0.5$	Pass
		5825	/	/	1	16.053	$\geq 0.5$	Pass
802.11n (HT20)	MIMO	5745	/	/	1	16.064	$\geq 0.5$	Pass
		5785	/	/	1	16.692	$\geq 0.5$	Pass
		5825	/	/	1	16.211	$\geq 0.5$	Pass
802.11n (HT40)	MIMO	5755	/	/	1	35.165	$\geq 0.5$	Pass
		5795	/	/	1	35.158	$\geq 0.5$	Pass
802.11ac (VHT20)	MIMO	5745	/	/	1	16.742	$\geq 0.5$	Pass
		5785	/	/	1	17.533	$\geq 0.5$	Pass
		5825	/	/	1	17.530	$\geq 0.5$	Pass
802.11ac (VHT40)	MIMO	5755	/	/	1	35.164	$\geq 0.5$	Pass
		5795	/	/	1	35.172	$\geq 0.5$	Pass
802.11ac (VHT80)	MIMO	5775	/	/	1	75.160	$\geq 0.5$	Pass
802.11ax (HEW20)	MIMO	5745	RU242	Left	1	18.748	$\geq 0.5$	Pass
		5785	RU242	Left	1	18.707	$\geq 0.5$	Pass
		5825	RU242	Left	1	18.649	$\geq 0.5$	Pass
802.11ax (HEW40)	MIMO	5755	RU484	Left	1	36.032	$\geq 0.5$	Pass
		5795	RU484	Left	1	35.556	$\geq 0.5$	Pass
802.11ax (HEW80)	MIMO	5775	RU996	Left	1	75.318	$\geq 0.5$	Pass

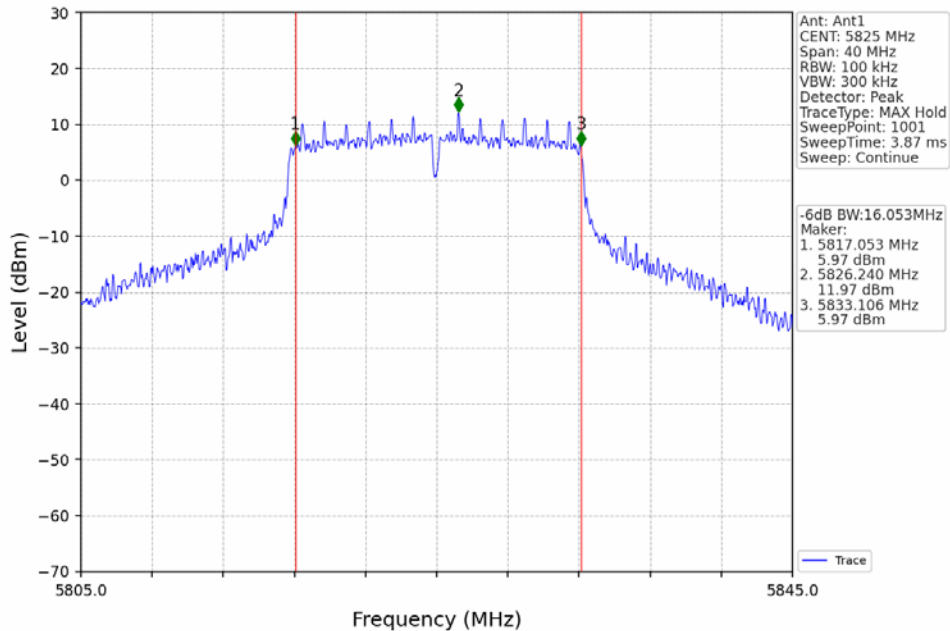




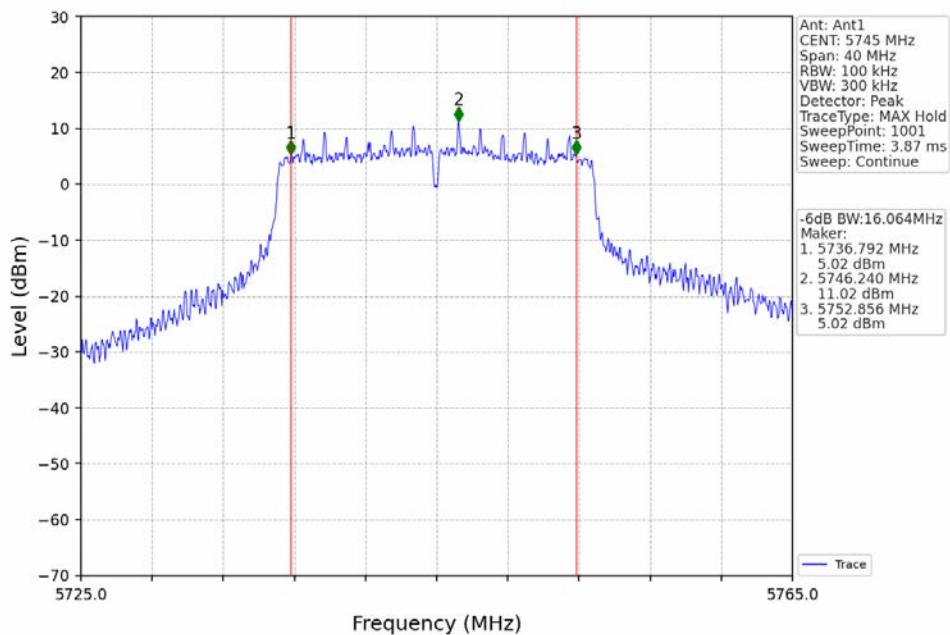
### 2.2.2 Test Graph



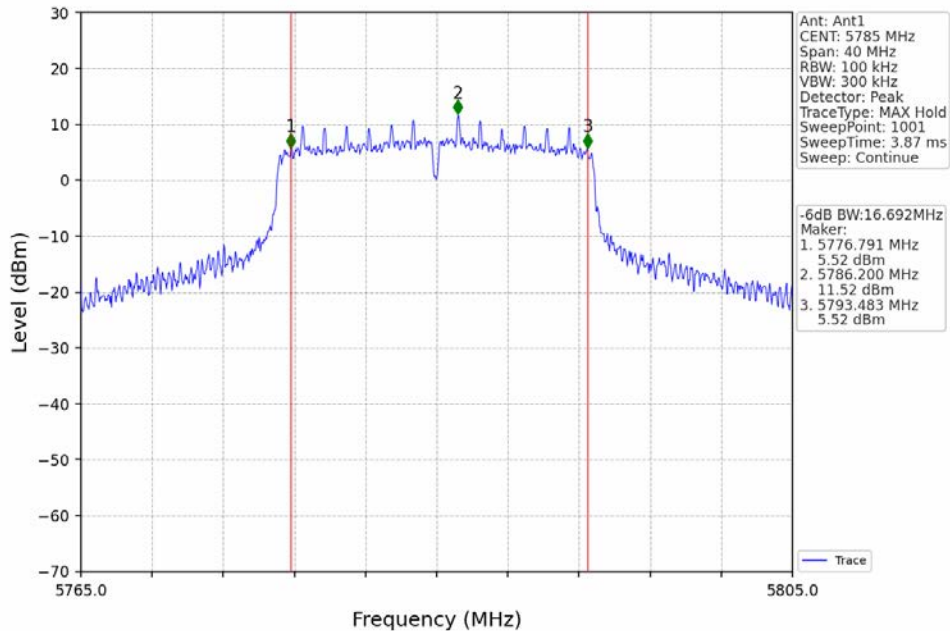
802.11a\_HCH\_5825MHz\_Ant1\_NTNV



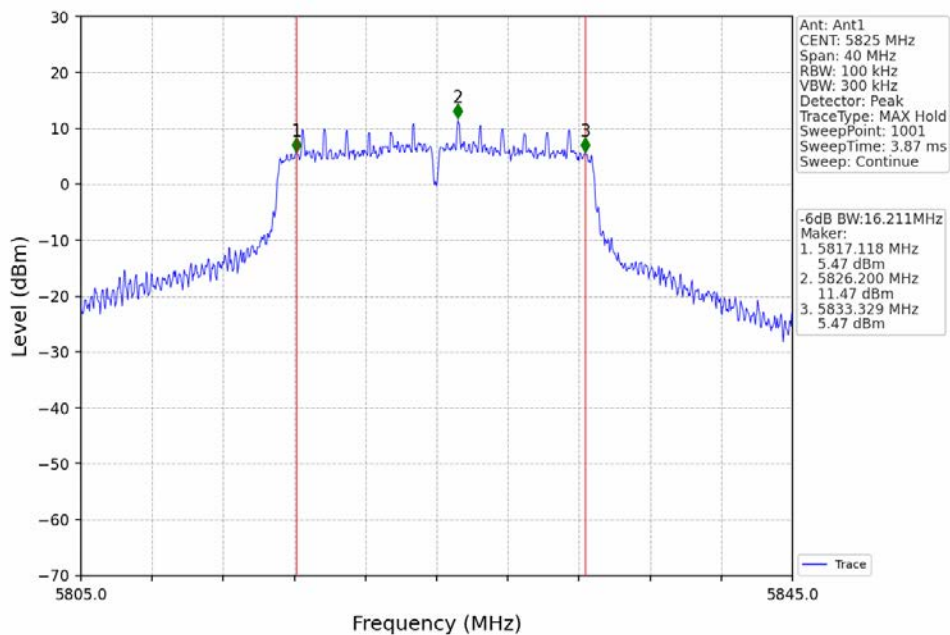
802.11n(HT20)\_LCH\_5745MHz\_Ant1\_NTNV



802.11n(HT20)\_MCH\_5785MHz\_Ant1\_NTNV

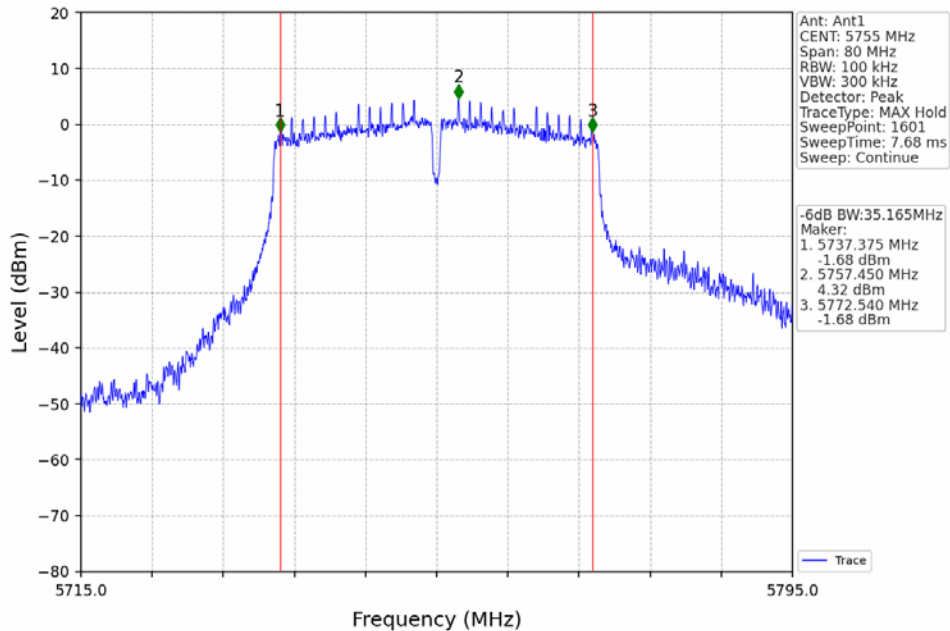


802.11n(HT20)\_HCH\_5825MHz\_Ant1\_NTNV

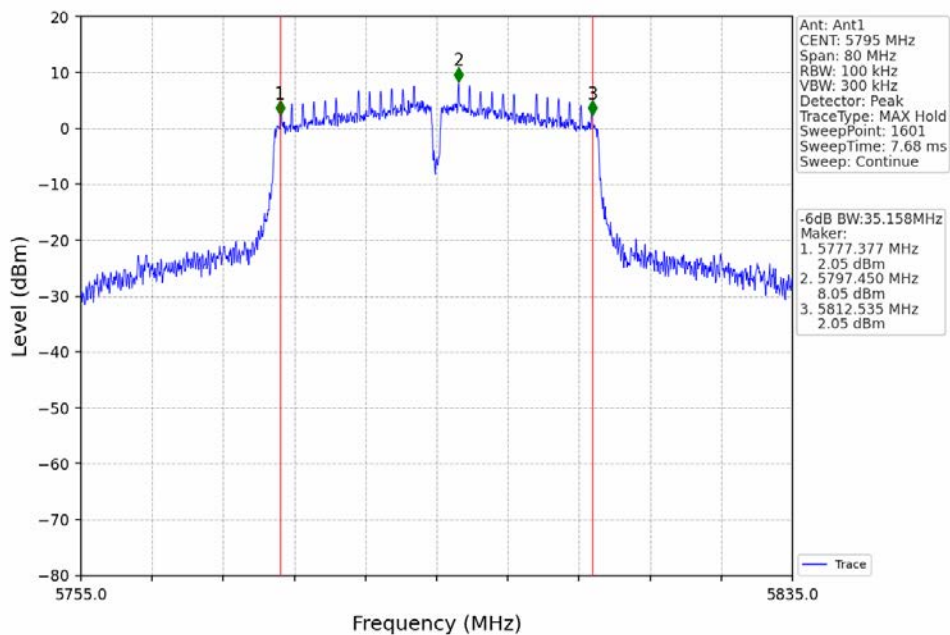




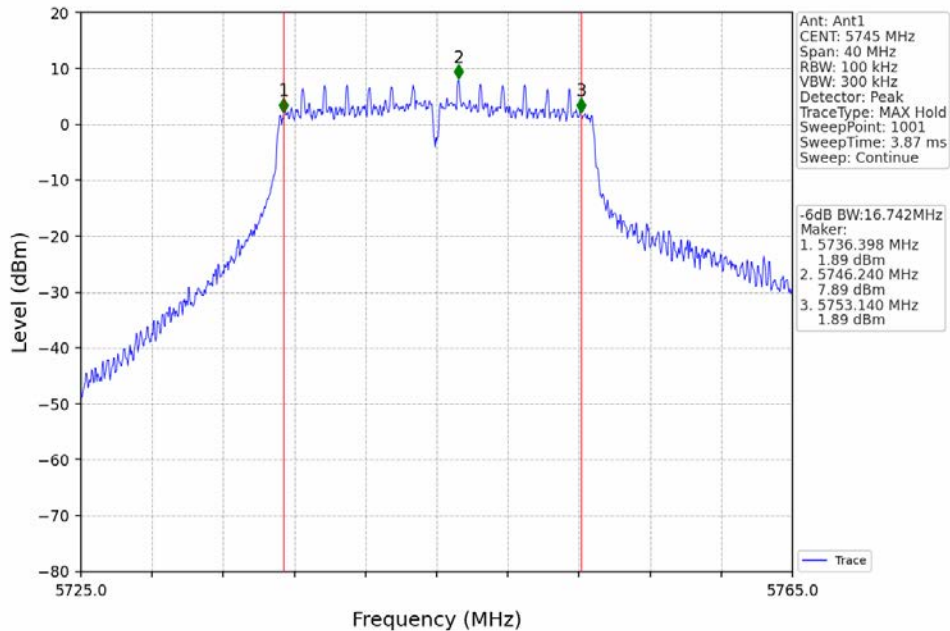
802.11n(HT40)\_LCH\_5755MHz\_Ant1\_NTNV



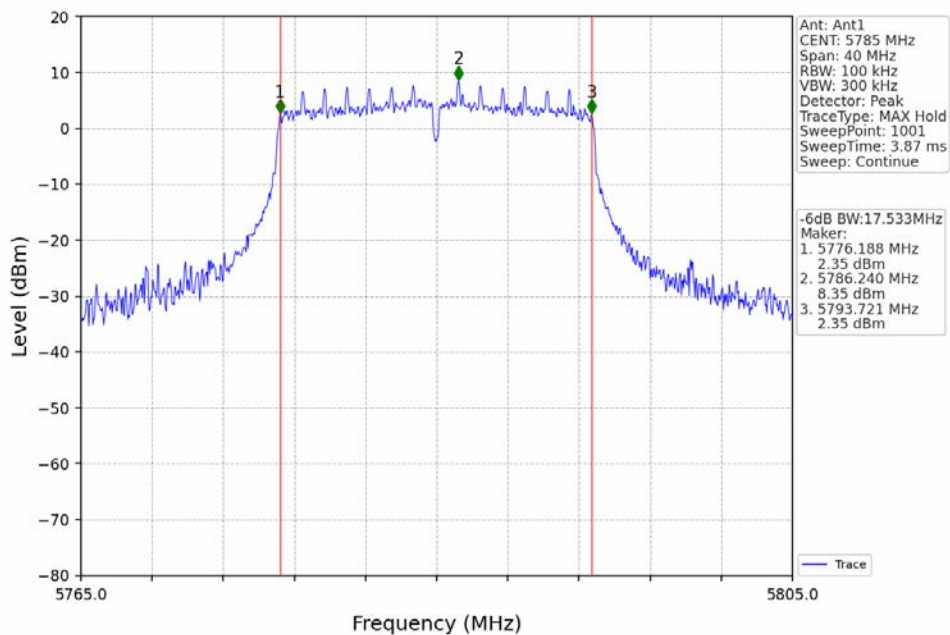
802.11n(HT40)\_HCH\_5795MHz\_Ant1\_NTNV



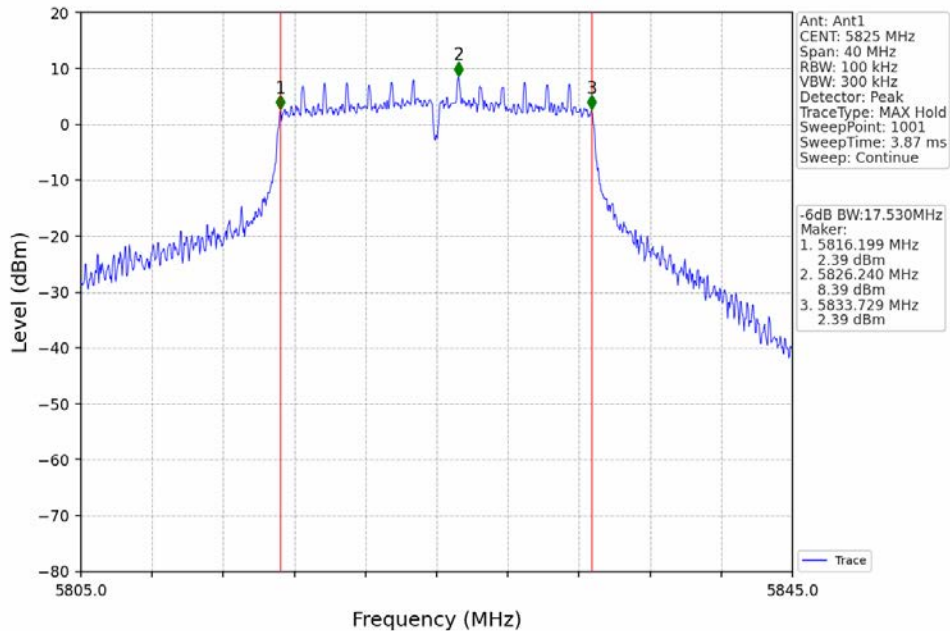
802.11ac(VHT20)\_LCH\_5745MHz\_Ant1\_NTNV



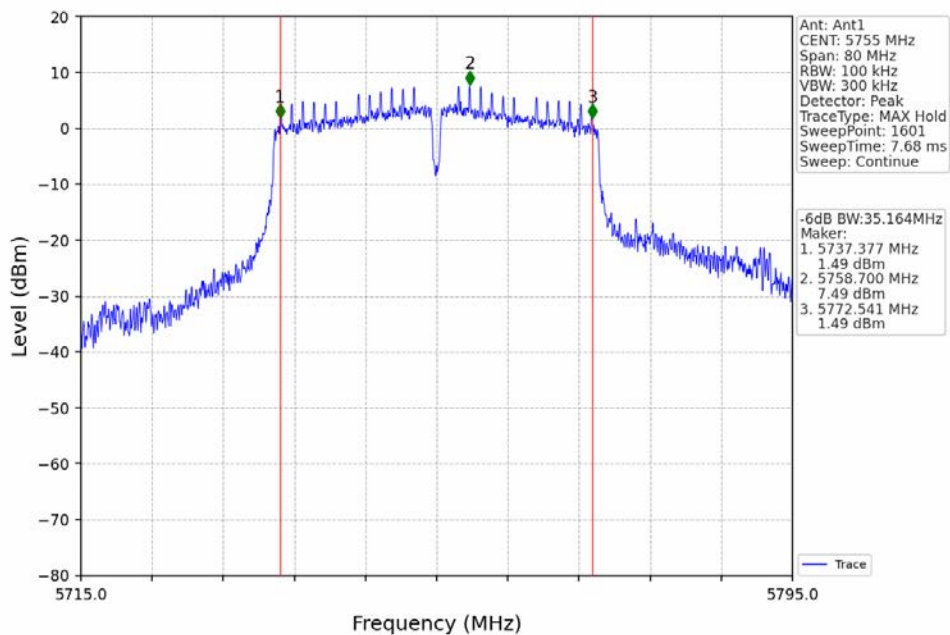
802.11ac(VHT20)\_MCH\_5785MHz\_Ant1\_NTNV



### 802.11ac(VHT20)\_HCH\_5825MHz\_Ant1\_NTNV

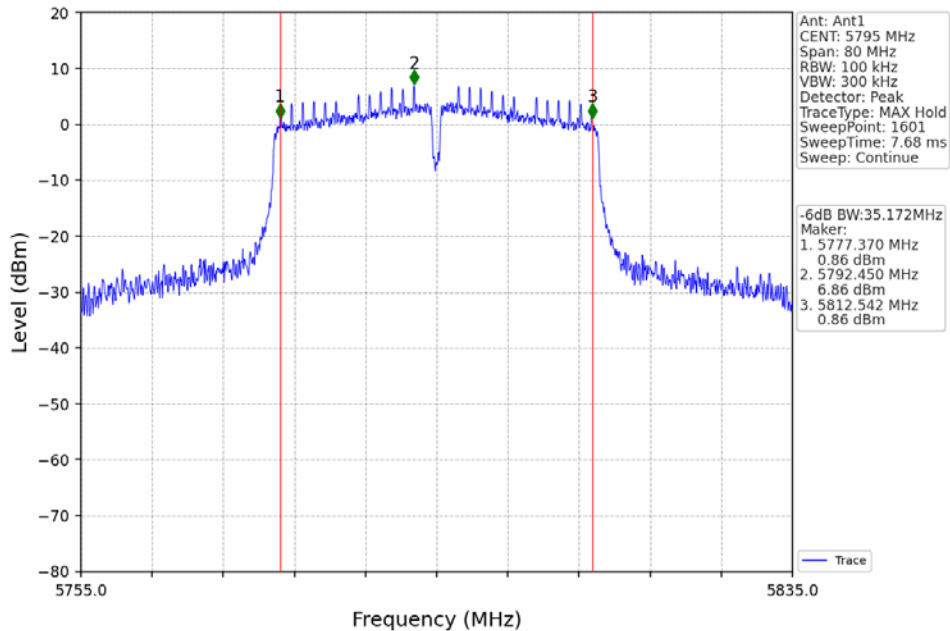


### 802.11ac(VHT40)\_LCH\_5755MHz\_Ant1\_NTNV

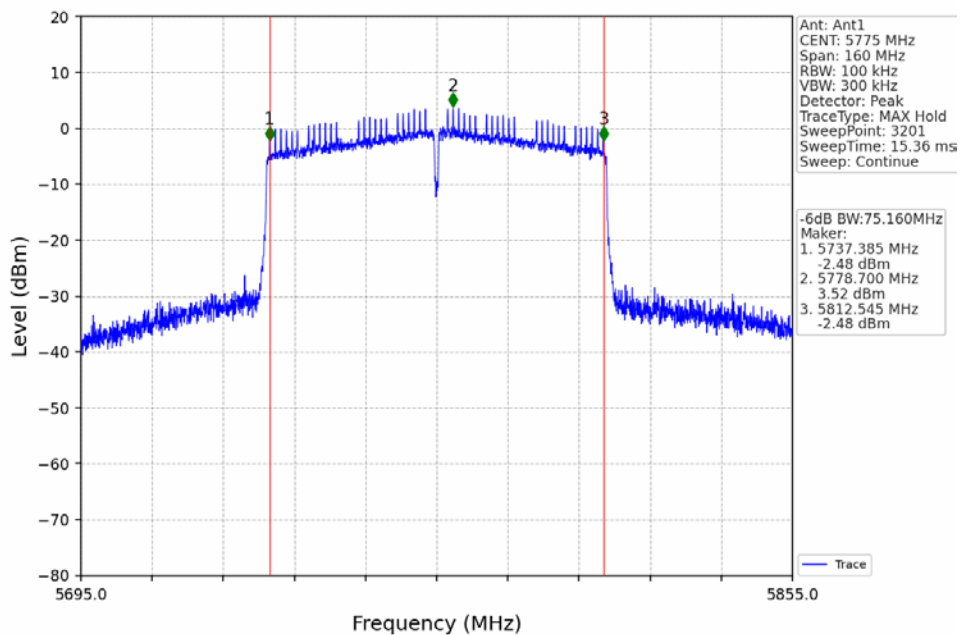




802.11ac(VHT40)\_HCH\_5795MHz\_Ant1\_NTNV



802.11ac(VHT80)\_MCH\_5775MHz\_Ant1\_NTNV



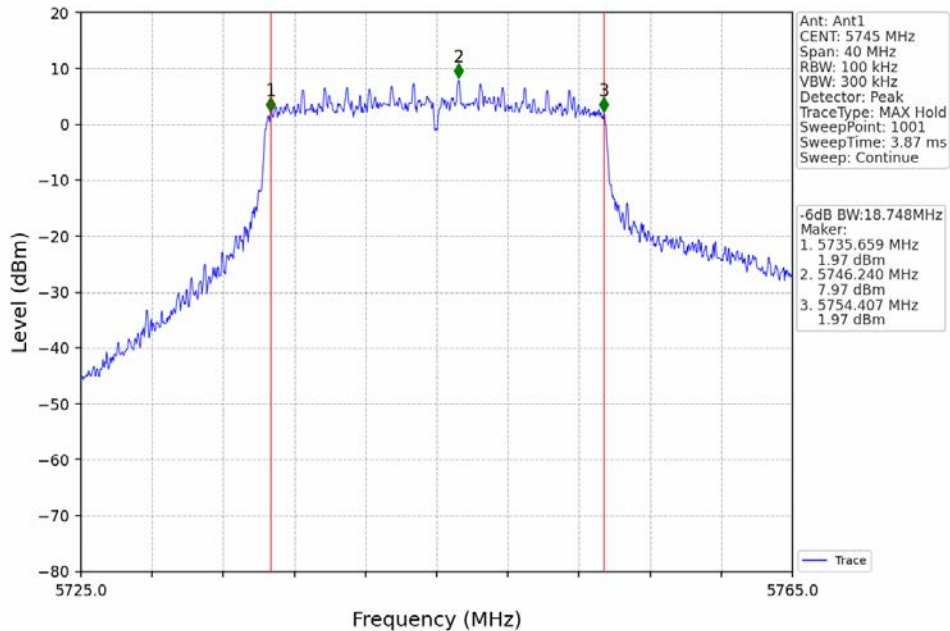
Unless otherwise agreed in writing, this document is issued by the Company subject to its General Conditions of Service printed overleaf, available on request or accessible at <https://www.sgs.com/en/Terms-and-Conditions>. Attention is drawn to the limitation of liability, indemnification and jurisdiction issues defined therein. Any holder of this document is advised that information contained hereon reflects the Company's findings at the time of its intervention only and within the limits of Client's instructions, if any. The Company's sole responsibility is to its Client and this document does not exonerate parties to a transaction from exercising all their rights and obligations under the transaction documents. This document cannot be reproduced except in full, without prior written approval of the Company. Any unauthorized alteration, forgery or falsification of the content or appearance of this document is unlawful and offenders may be prosecuted to the fullest extent of the law. Unless otherwise stated the results shown in this test report refer only to the sample(s) tested and such sample(s) are retained for 30 days only.

Attention: To check the authenticity of testing /inspection report & certificate, please contact us at telephone: (86-755) 8307 1443, or email: [CN.Doccheck@sgs.com](mailto:CN.Doccheck@sgs.com)

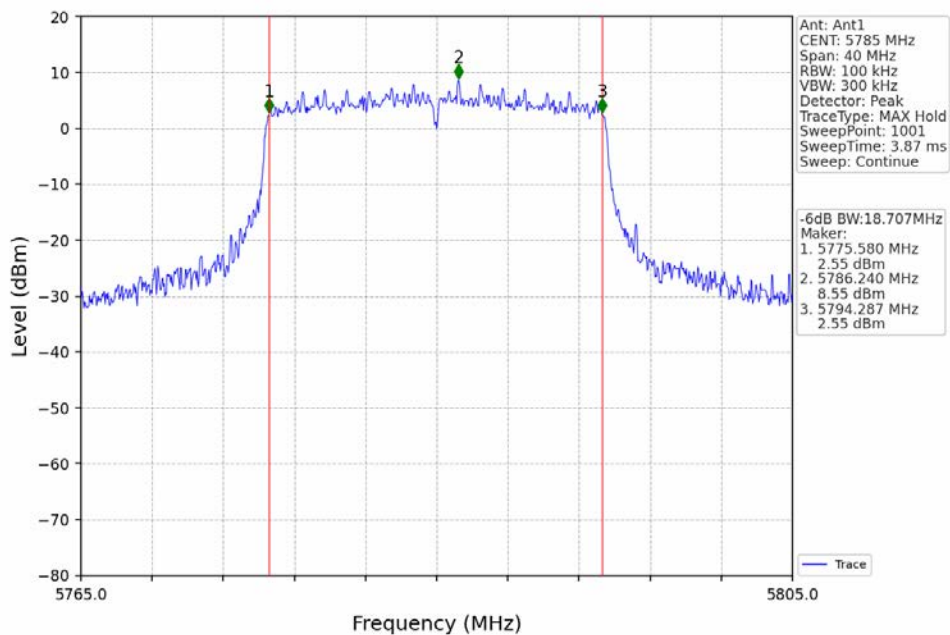
SGS-CSTC Standards Technical Services Co., Ltd.  
Shenzhen Branch (SZEMC) Laboratory

No.1 Workshop, M-10, Middle Section, Science & Technology Park, Nanshan District, Shenzhen, Guangdong, China 518057 t (86-755) 26012053 f (86-755) 26710594 www.sgs.com.cn  
中国·广东·深圳市南山区科技园中区M-10栋1号厂房 邮编: 518057 t (86-755) 26012053 f (86-755) 26710594 sgs.china@sgs.com

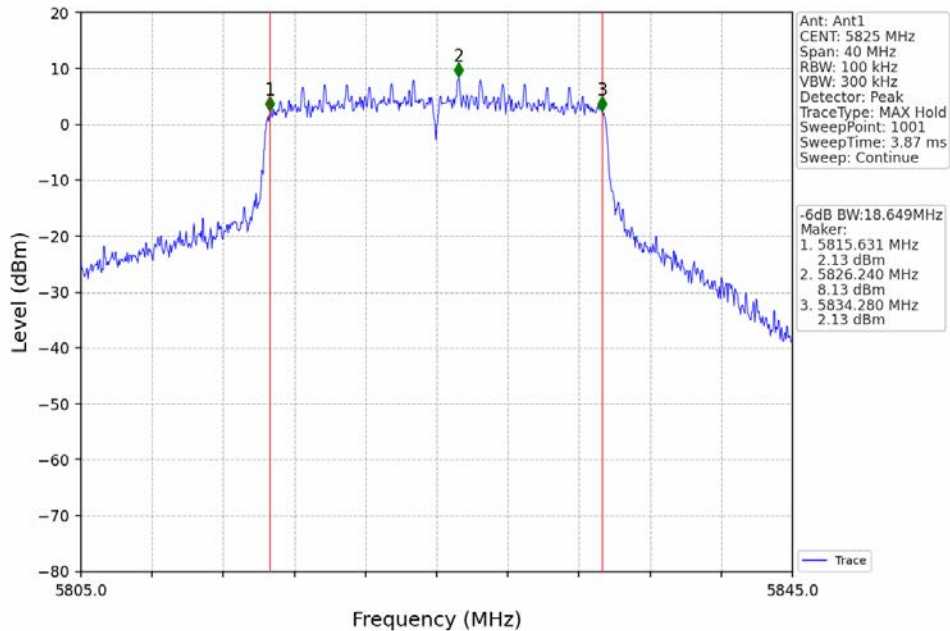
802.11ax(HEW20)\_LCH\_5745MHz\_RU242\_Left\_Ant1\_NTNV



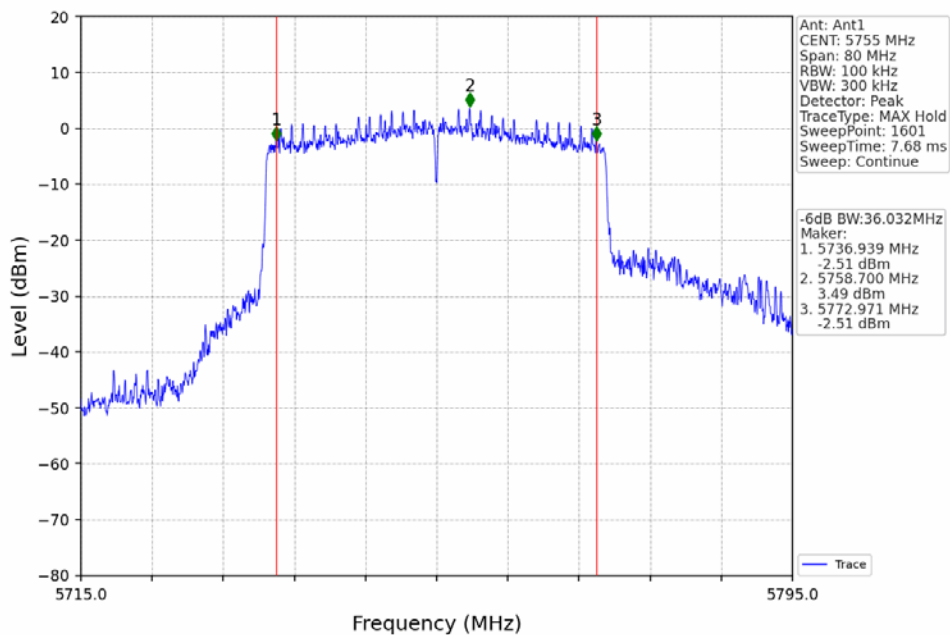
802.11ax(HEW20)\_MCH\_5785MHz\_RU242\_Left\_Ant1\_NTNV



802.11ax(HEW20)\_HCH\_5825MHz\_RU242\_Left\_Ant1\_NTNV

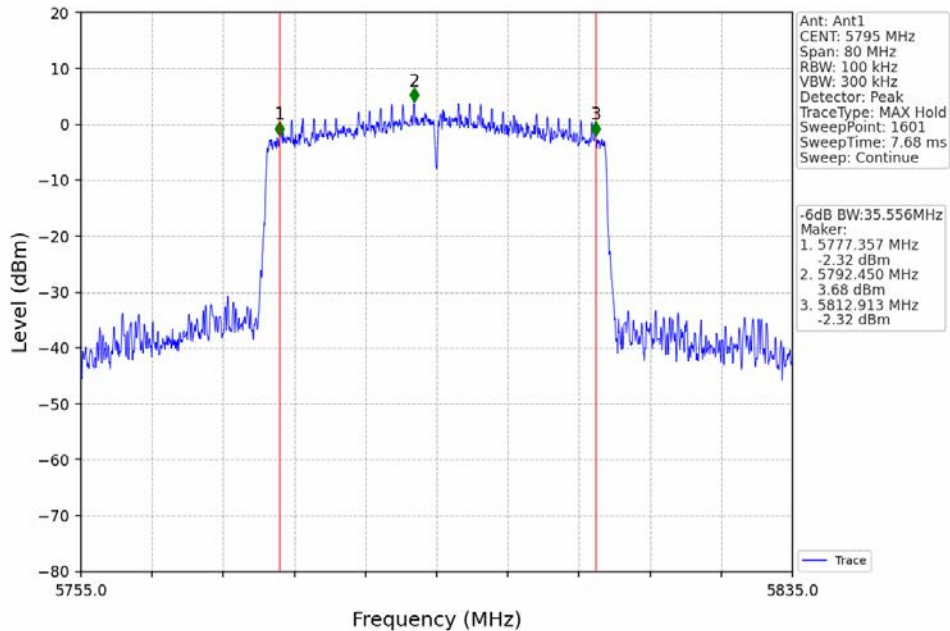


802.11ax(HEW40)\_LCH\_5755MHz\_RU484\_Left\_Ant1\_NTNV

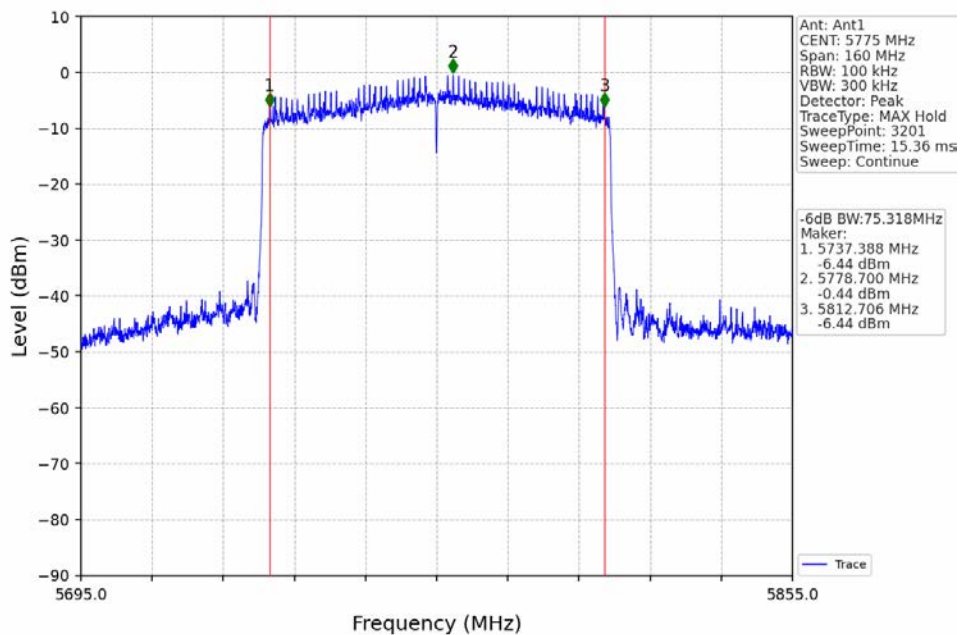




802.11ax(HEW40)\_HCH\_5795MHz\_RU484\_Left\_Ant1\_NTNV



802.11ax(HEW80)\_MCH\_5775MHz\_RU996\_Left\_Ant1\_NTNV



# SGS-CSTC Standards Technical Services Co., Ltd. Shenzhen Branch

SZEMC-TRF-01 Rev. A/1

Report No.: SZCR240400116203

Page: 282 of 528

## 2.3 26dB BW

### 2.3.1 Test Result

Mode	TX Type	Frequency (MHz)	RU	RU Pos	ANT	26dB Bandwidth (MHz)		Verdict
						Result	Limit	
802.11a	MIMO	5180	/	/	1	26.116	/	Pass
		5200	/	/	1	30.108	/	Pass
		5240	/	/	1	20.136	/	Pass
		5260	/	/	1	20.621	/	Pass
		5300	/	/	1	27.004	/	Pass
		5320	/	/	1	26.252	/	Pass
		5500	/	/	1	33.303	/	Pass
		5580	/	/	1	30.138	/	Pass
		5700	/	/	1	25.814	/	Pass
802.11n (HT20)	MIMO	5180	/	/	1	26.240	/	Pass
		5200	/	/	1	27.089	/	Pass
		5240	/	/	1	23.559	/	Pass
		5260	/	/	1	21.437	/	Pass
		5300	/	/	1	27.669	/	Pass
		5320	/	/	1	26.672	/	Pass
		5500	/	/	1	26.259	/	Pass
		5580	/	/	1	21.385	/	Pass
		5700	/	/	1	25.852	/	Pass
802.11n (HT40)	MIMO	5190	/	/	1	47.407	/	Pass
		5230	/	/	1	40.934	/	Pass
		5270	/	/	1	40.459	/	Pass
		5310	/	/	1	52.084	/	Pass
		5510	/	/	1	52.978	/	Pass
		5550	/	/	1	41.041	/	Pass
		5670	/	/	1	51.262	/	Pass
802.11ac (VHT20)	MIMO	5180	/	/	1	26.488	/	Pass
		5200	/	/	1	31.655	/	Pass
		5240	/	/	1	20.590	/	Pass
		5260	/	/	1	21.418	/	Pass
		5300	/	/	1	25.673	/	Pass
		5320	/	/	1	26.867	/	Pass
		5500	/	/	1	28.150	/	Pass
		5580	/	/	1	21.606	/	Pass
		5700	/	/	1	24.389	/	Pass



Unless otherwise agreed in writing, this document is issued by the Company subject to its General Conditions of Service printed overleaf, available on request or accessible at <https://www.sgs.com/en/Terms-and-Conditions>. Attention is drawn to the limitation of liability, indemnification and jurisdiction issues defined therein. Any holder of this document is advised that information contained hereon reflects the Company's findings at the time of its intervention only and within the limits of Client's instructions, if any. The Company's sole responsibility is to its Client and this document does not exonerate parties to a transaction from exercising all their rights and obligations under the transaction documents. This document cannot be reproduced except in full, without prior written approval of the Company. Any unauthorized alteration, forgery or falsification of the content or appearance of this document is unlawful and offenders may be prosecuted to the fullest extent of the law. Unless otherwise stated the results shown in this test report refer only to the sample(s) tested and such sample(s) are retained for 30 days only.

Attention: To check the authenticity of testing / inspection report & certificate, please contact us at telephone: (86-755) 8307 1443, or email: [CN.Doccheck@sgs.com](mailto:CN.Doccheck@sgs.com)

SGS-CSTC Standards Technical Services Co., Ltd.  
Shenzhen Branch (SZEMC) Laboratory

No.1 Workshop, M-10, Middle Section, Science & Technology Park, Nanshan District, Shenzhen, Guangdong, China 518057 t (86-755) 26012053 f (86-755) 26710594 www.sgs.com.cn  
中国·广东·深圳市南山区科技园中区M-10栋1号厂房 邮编: 518057 t (86-755) 26012053 f (86-755) 26710594 sgs.china@sgs.com

## SGS-CSTC Standards Technical Services Co., Ltd. Shenzhen Branch

SZEMC-TRF-01 Rev. A/1

Report No.: SZCR240400116203

Page: 283 of 528

802.11ac (VHT40)	MIMO	5190	/	/	1	51.219	/	Pass
		5230	/	/	1	40.667	/	Pass
		5270	/	/	1	40.172	/	Pass
		5310	/	/	1	51.577	/	Pass
		5510	/	/	1	49.687	/	Pass
		5550	/	/	1	40.432	/	Pass
		5670	/	/	1	54.883	/	Pass
802.11ac (VHT80)	MIMO	5210	/	/	1	107.469	/	Pass
		5290	/	/	1	103.756	/	Pass
		5530	/	/	1	100.642	/	Pass
		5610	/	/	1	80.108	/	Pass
802.11ac (VHT160)	MIMO	5570	/	/	1	230.503	/	Pass
		5250	/	/	1	170.957	/	Pass
802.11ax (HEW20)	MIMO	5180	RU242	Left	1	25.748	/	Pass
		5200	RU242	Left	1	29.342	/	Pass
		5240	RU242	Left	1	19.985	/	Pass
		5260	RU242	Left	1	21.829	/	Pass
		5300	RU242	Left	1	26.676	/	Pass
		5320	RU242	Left	1	25.631	/	Pass
		5500	RU242	Left	1	27.283	/	Pass
		5580	RU242	Left	1	21.677	/	Pass
		5700	RU242	Left	1	25.779	/	Pass
802.11ax (HEW40)	MIMO	5190	RU484	Left	1	49.259	/	Pass
		5230	RU484	Left	1	39.582	/	Pass
		5270	RU484	Left	1	39.482	/	Pass
		5310	RU484	Left	1	47.193	/	Pass
		5510	RU484	Left	1	41.331	/	Pass
		5550	RU484	Left	1	39.559	/	Pass
		5670	RU484	Left	1	52.934	/	Pass
802.11ax (HEW80)	MIMO	5210	RU996	Left	1	82.025	/	Pass
		5290	RU996	Left	1	101.605	/	Pass
		5530	RU996	Left	1	84.091	/	Pass
		5610	RU996	Left	1	80.273	/	Pass
802.11ax (HEW160)	MIMO	5570	2xRU996	Left	1	165.470	/	Pass
		5250	2xRU996	Left	1	161.836	/	Pass



SGS-CSTC Standards Technical Services Co., Ltd.  
Shenzhen Branch (SZEMC) Laboratory

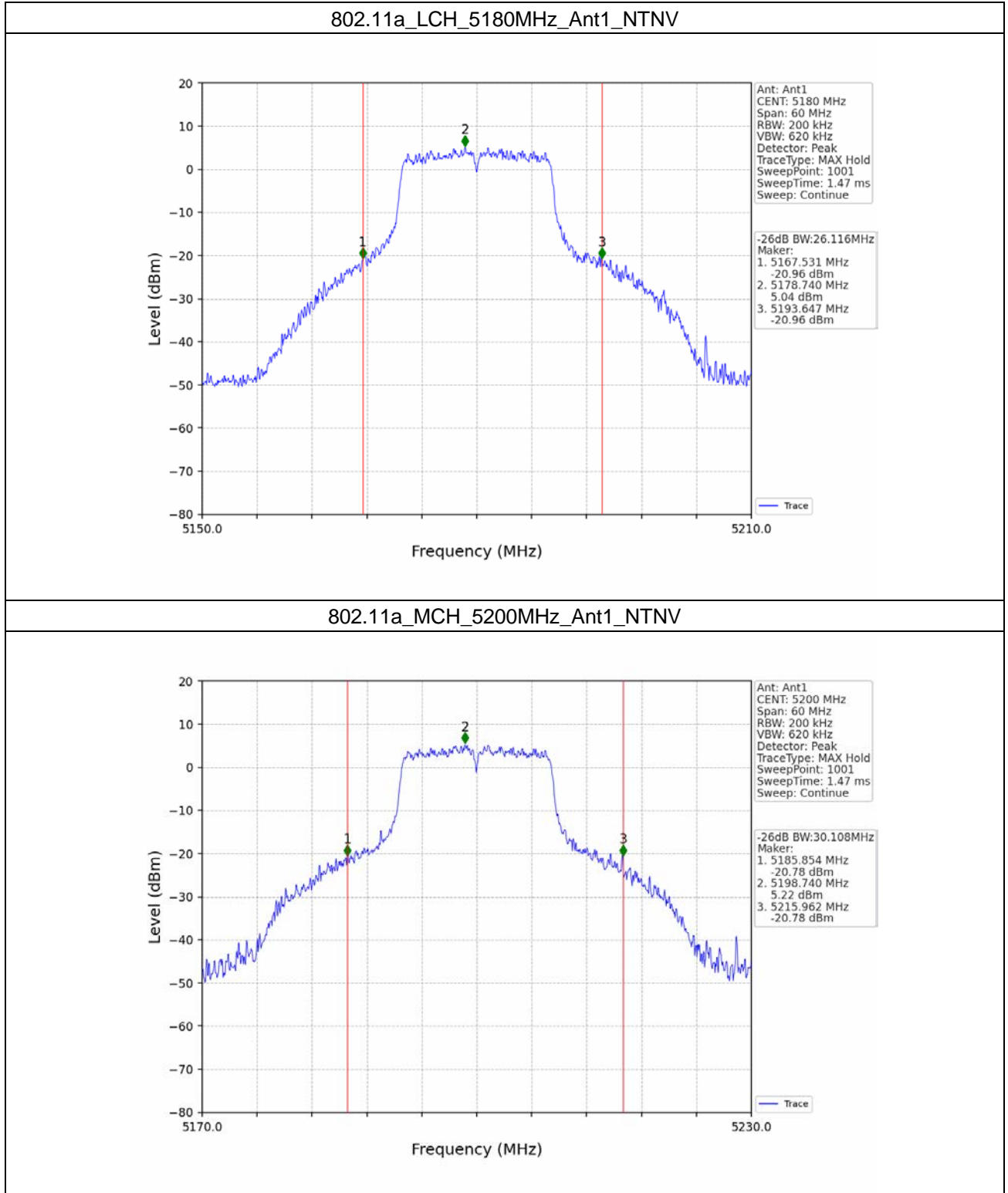
Unless otherwise agreed in writing, this document is issued by the Company subject to its General Conditions of Service printed overleaf, available on request or accessible at <https://www.sgs.com/en/Terms-and-Conditions>. Attention is drawn to the limitation of liability, indemnification and jurisdiction issues defined therein. Any holder of this document is advised that information contained hereon reflects the Company's findings at the time of its intervention only and within the limits of Client's instructions, if any. The Company's sole responsibility is to its Client and this document does not exonerate parties to a transaction from exercising all their rights and obligations under the transaction documents. This document cannot be reproduced except in full, without prior written approval of the Company. Any unauthorized alteration, forgery or falsification of the content or appearance of this document is unlawful and offenders may be prosecuted to the fullest extent of the law. Unless otherwise stated the results shown in this test report refer only to the sample(s) tested and such sample(s) are retained for 30 days only.

Attention: To check the authenticity of testing / inspection report & certificate, please contact us at telephone: (86-755) 8307 1443, or email: [CN.Doccheck@sgs.com](mailto:CN.Doccheck@sgs.com)

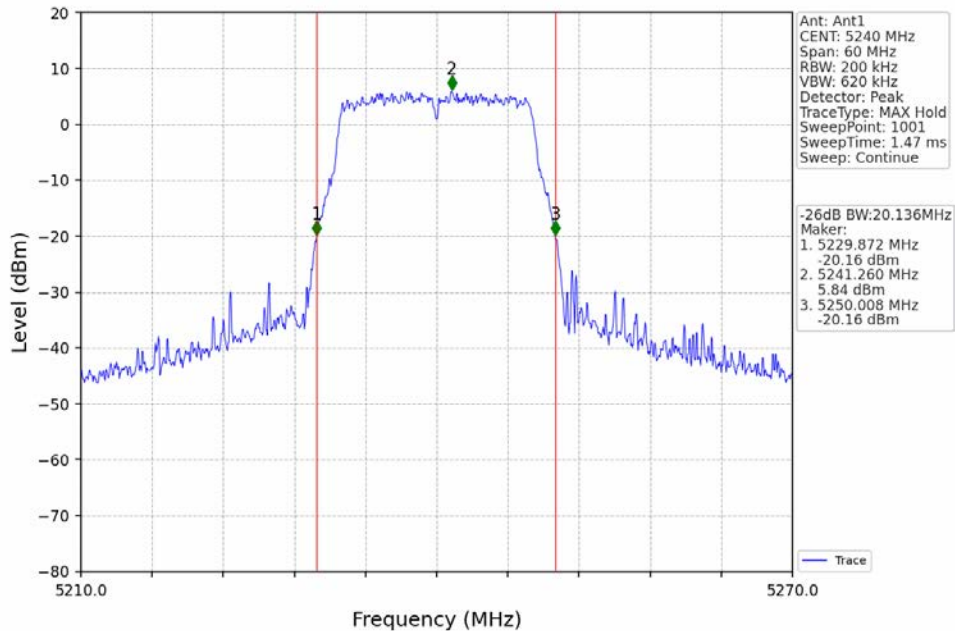
No. 1 Workshop, M-10, Middle Section, Science & Technology Park, Nanshan District, Shenzhen, Guangdong, China 518057 t (86-755) 26012053 f (86-755) 26710594 www.sgs.com.cn  
中国·广东·深圳市南山区科技园中区M-10栋1号厂房 邮编: 518057 t (86-755) 26012053 f (86-755) 26710594 sgs.china@sgs.com



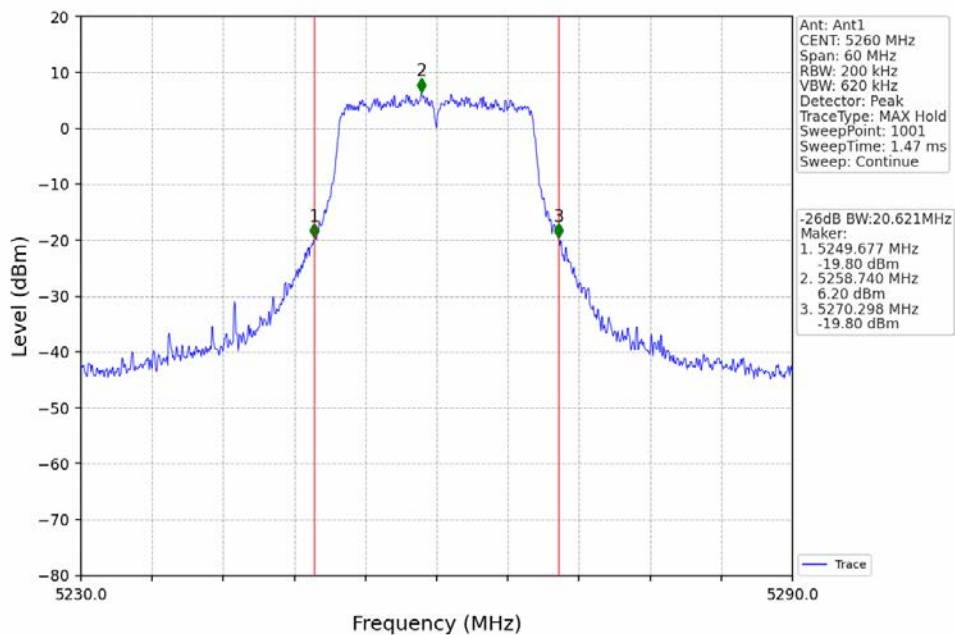
### 2.3.2 Test Graph



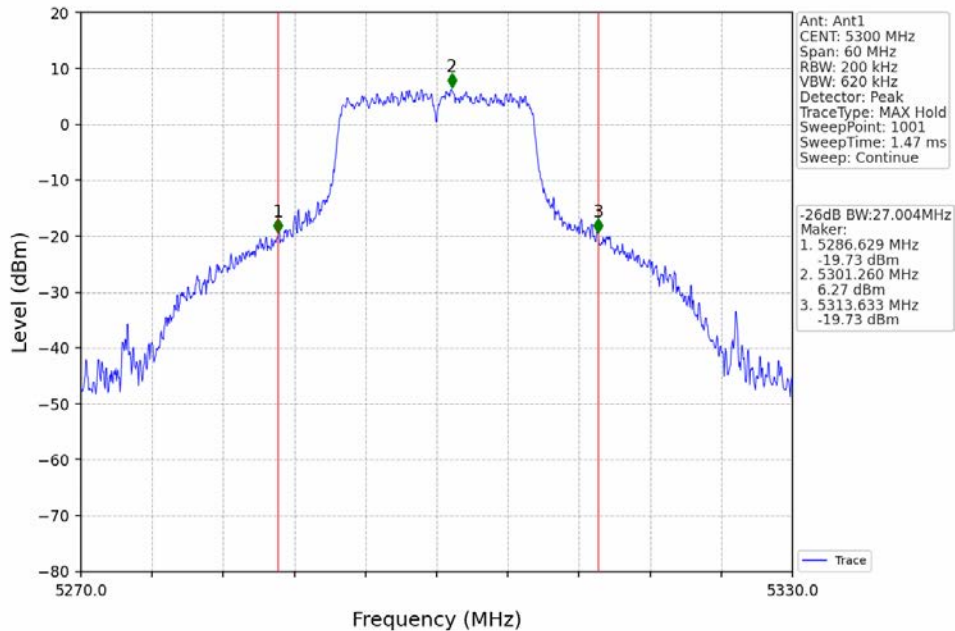
802.11a\_HCH\_5240MHz\_Ant1\_NTNV



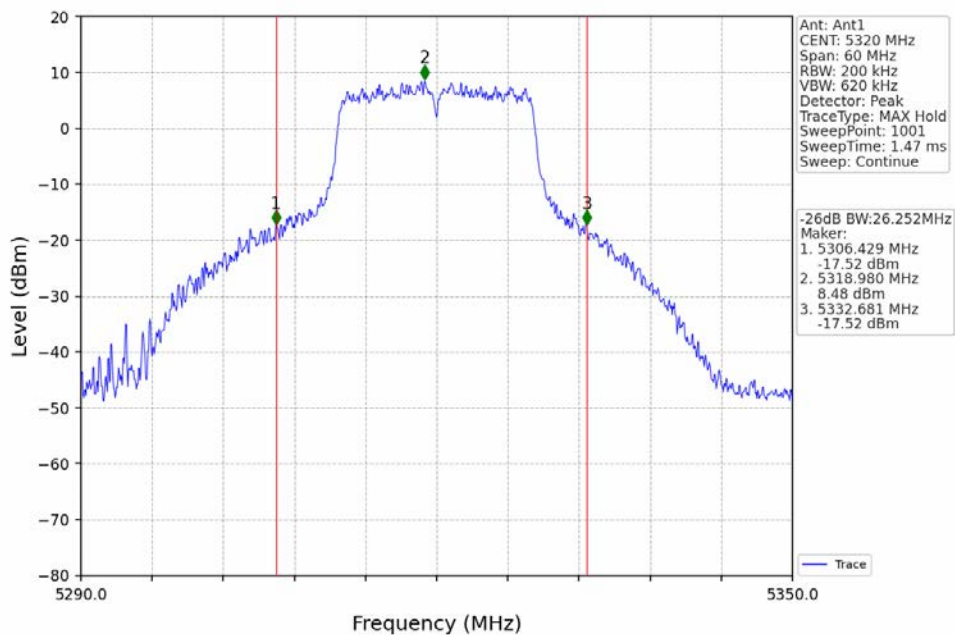
802.11a\_LCH\_5260MHz\_Ant1\_NTNV



802.11a\_MCH\_5300MHz\_Ant1\_NTNV

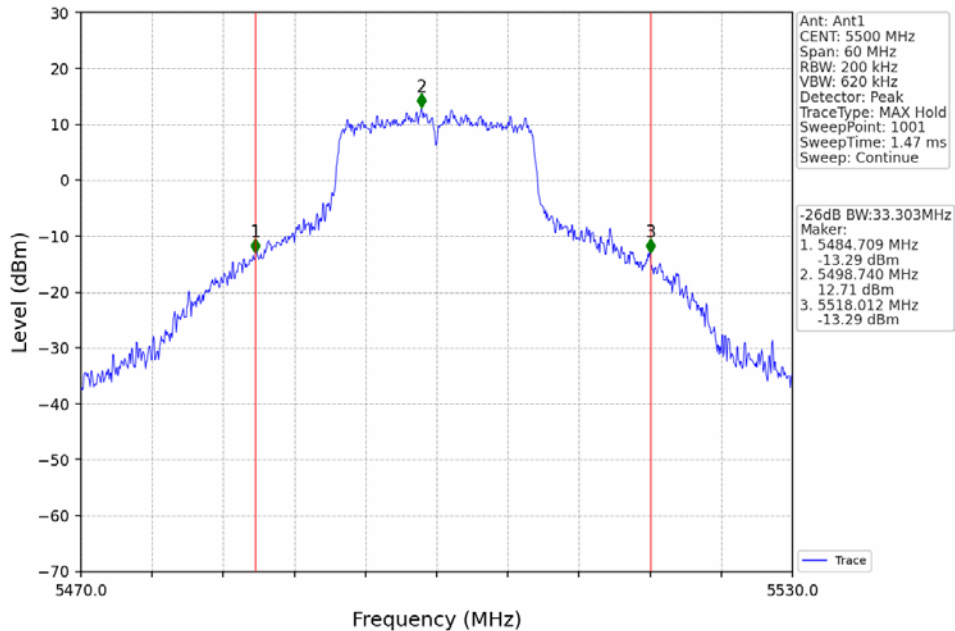


802.11a\_HCH\_5320MHz\_Ant1\_NTNV

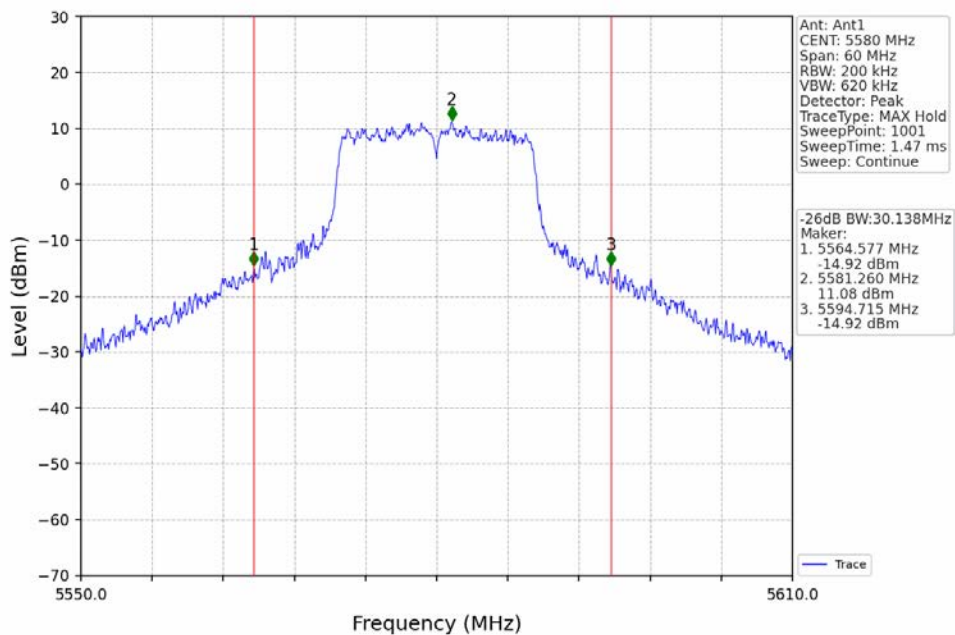




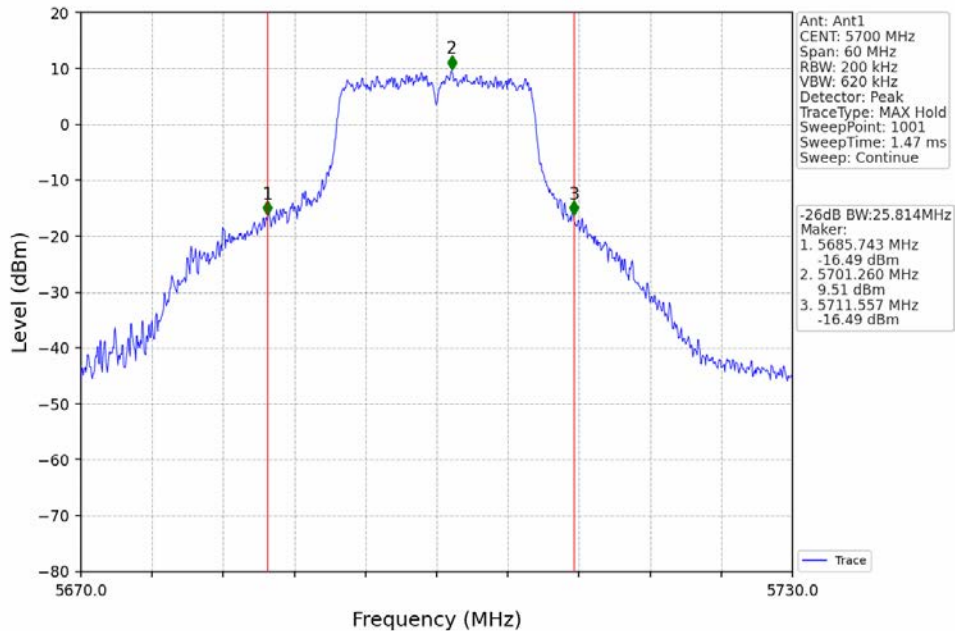
802.11a\_LCH\_5500MHz\_Ant1\_NTNV



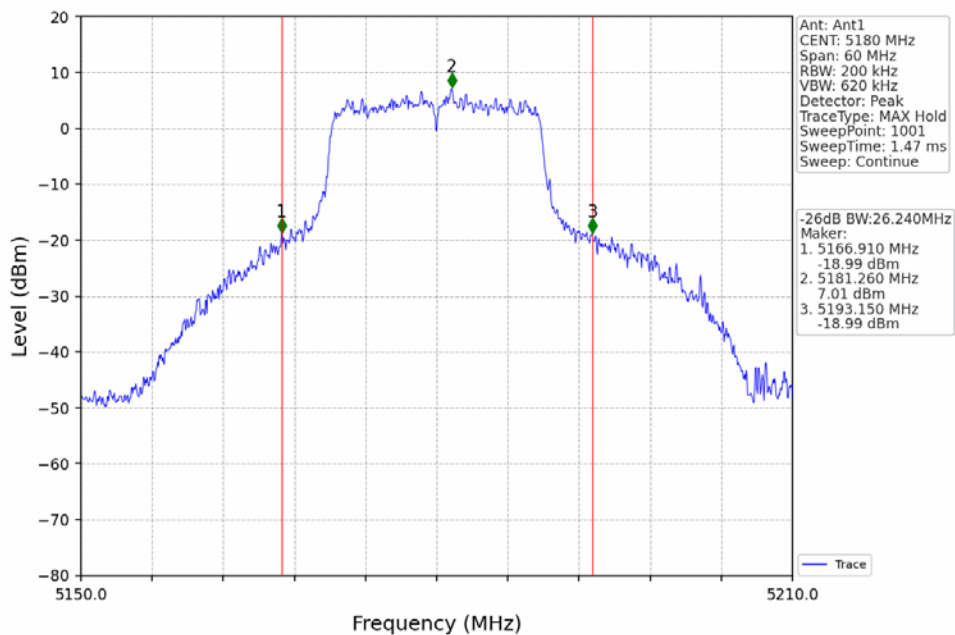
802.11a\_MCH\_5580MHz\_Ant1\_NTNV



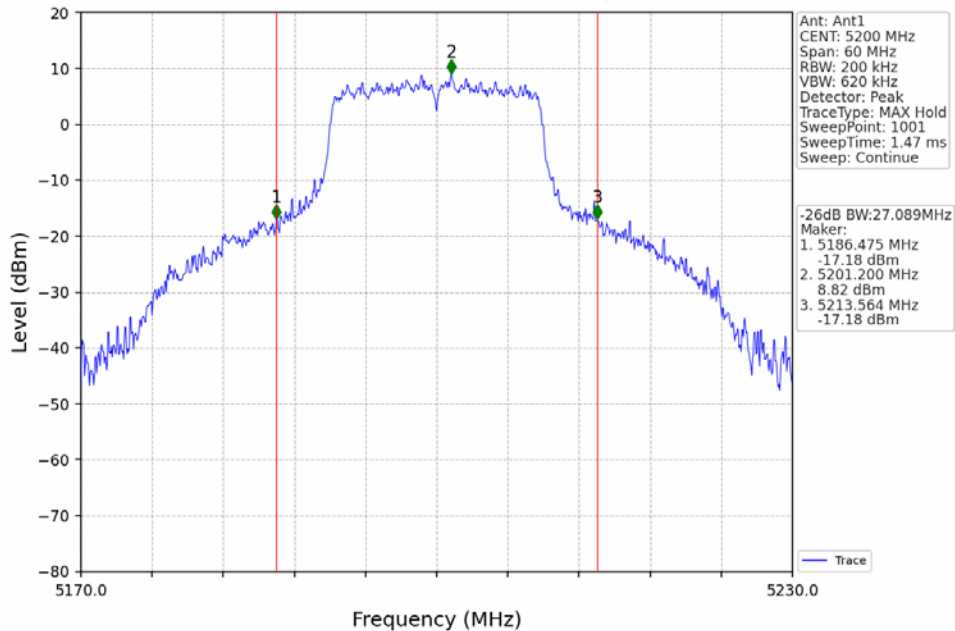
802.11a\_HCH\_5700MHz\_Ant1\_NTNV



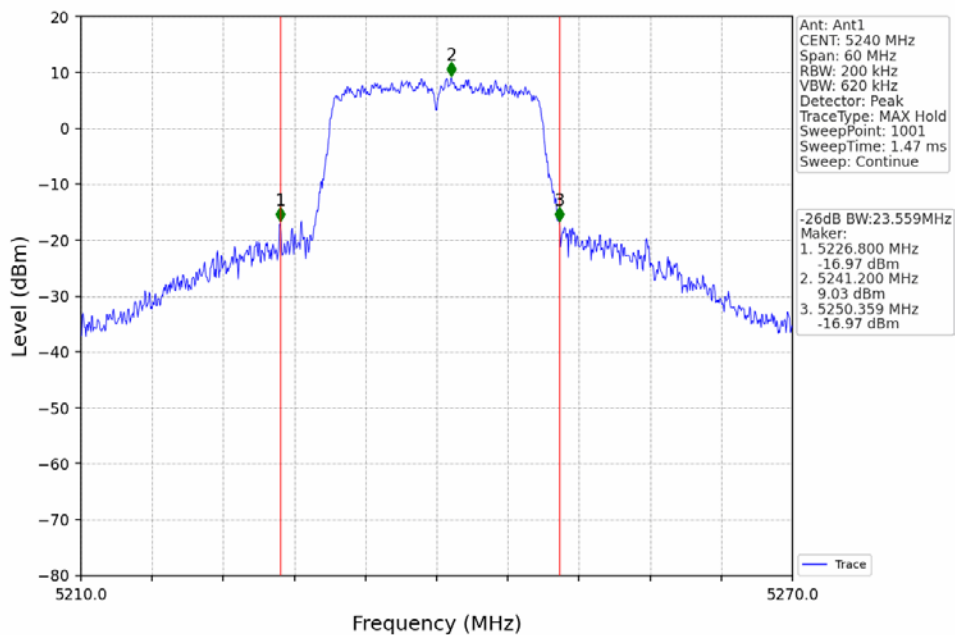
802.11n(HT20)\_LCH\_5180MHz\_Ant1\_NTNV



802.11n(HT20)\_MCH\_5200MHz\_Ant1\_NTNV



802.11n(HT20)\_HCH\_5240MHz\_Ant1\_NTNV



Unless otherwise agreed in writing, this document is issued by the Company subject to its General Conditions of Service printed overleaf, available on request or accessible at <https://www.sgs.com/en/Terms-and-Conditions>. Attention is drawn to the limitation of liability, indemnification and jurisdiction issues defined therein. Any holder of this document is advised that information contained hereon reflects the Company's findings at the time of its intervention only and within the limits of Client's instructions, if any. The Company's sole responsibility is to its Client and this document does not exonerate parties to a transaction from exercising all their rights and obligations under the transaction documents. This document cannot be reproduced except in full, without prior written approval of the Company. Any unauthorized alteration, forgery or falsification of the content or appearance of this document is unlawful and offenders may be prosecuted to the fullest extent of the law. Unless otherwise stated the results shown in this test report refer only to the sample(s) tested and such sample(s) are retained for 30 days only.

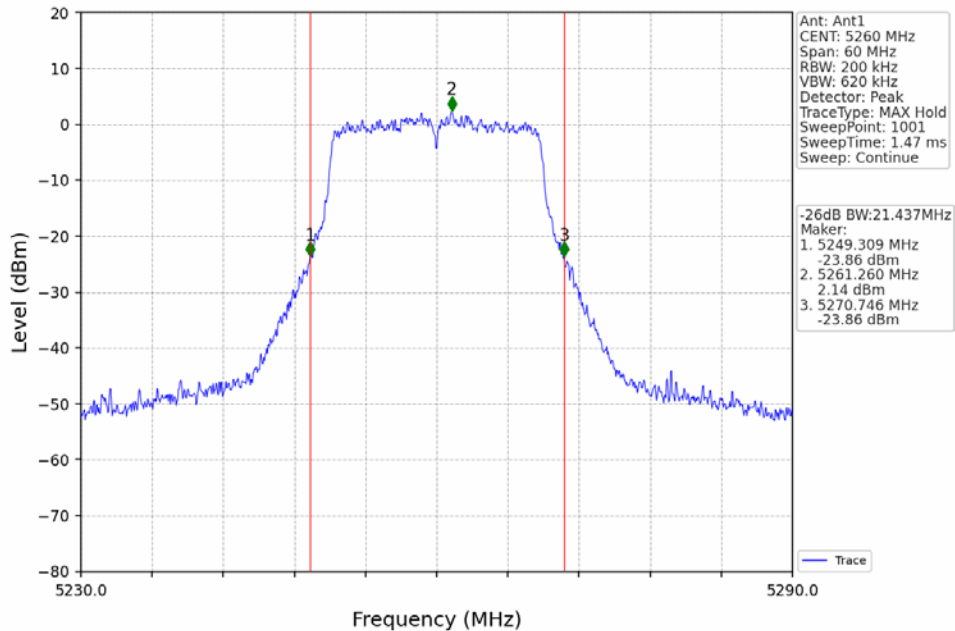
Attention: To check the authenticity of testing / inspection report & certificate, please contact us at telephone: (86-755) 8307 1443, or email: [CN.Doccheck@sgs.com](mailto:CN.Doccheck@sgs.com)

SGS-CSTC Standards Technical Services Co., Ltd.  
Shenzhen Branch (Shenzhen) Laboratory

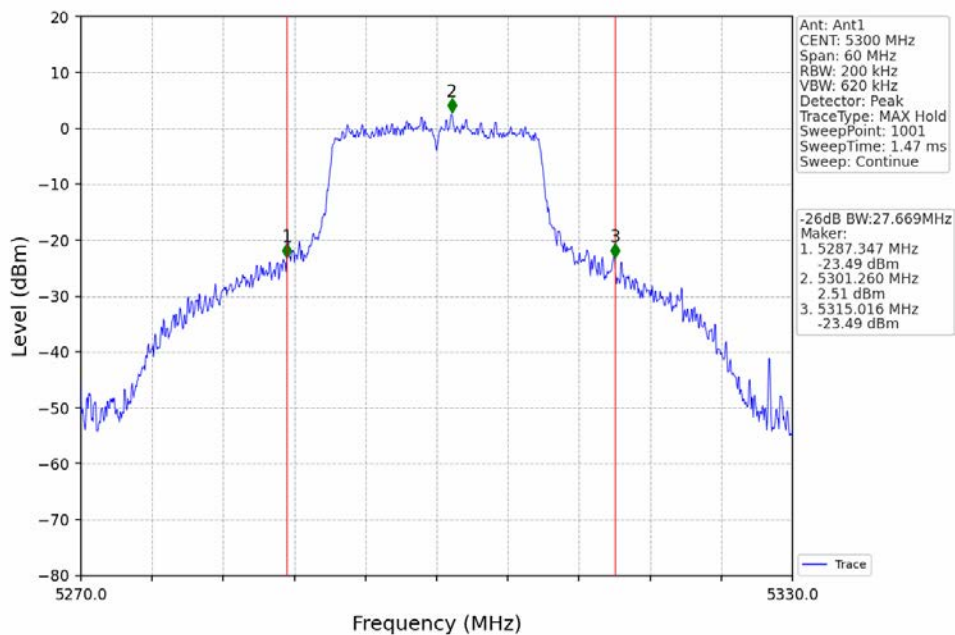
No.1 Workshop, M-10, Middle Section, Science & Technology Park, Nanshan District, Shenzhen, Guangdong, China 518057 t (86-755) 26012053 f (86-755) 26710594 www.sgs.com.cn  
中国·广东·深圳市南山区科技园中区M-10栋1号厂房 邮编: 518057 t (86-755) 26012053 f (86-755) 26710594 sgs.china@sgs.com



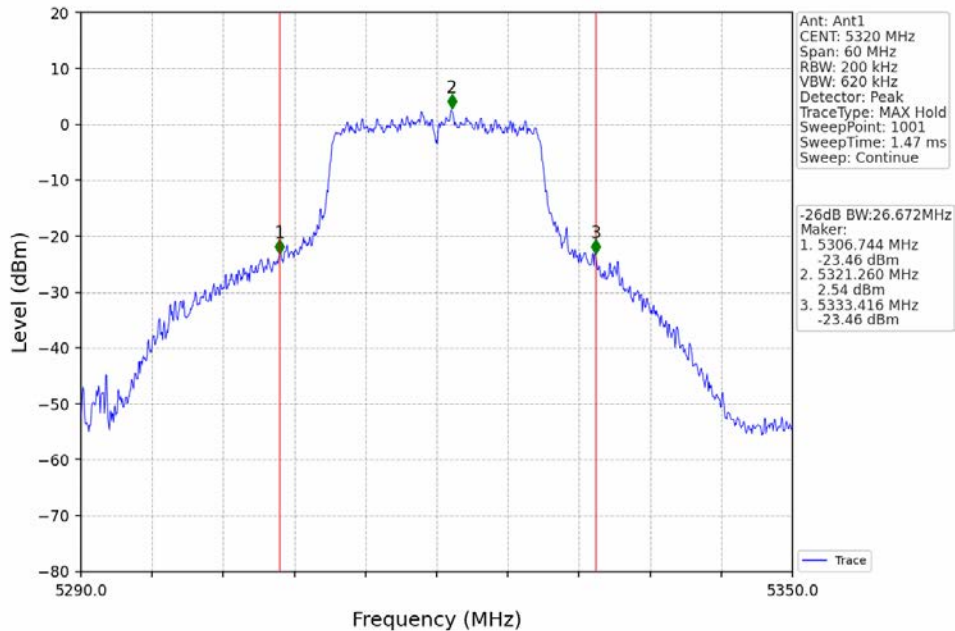
802.11n(HT20)\_LCH\_5260MHz\_Ant1\_NTNV



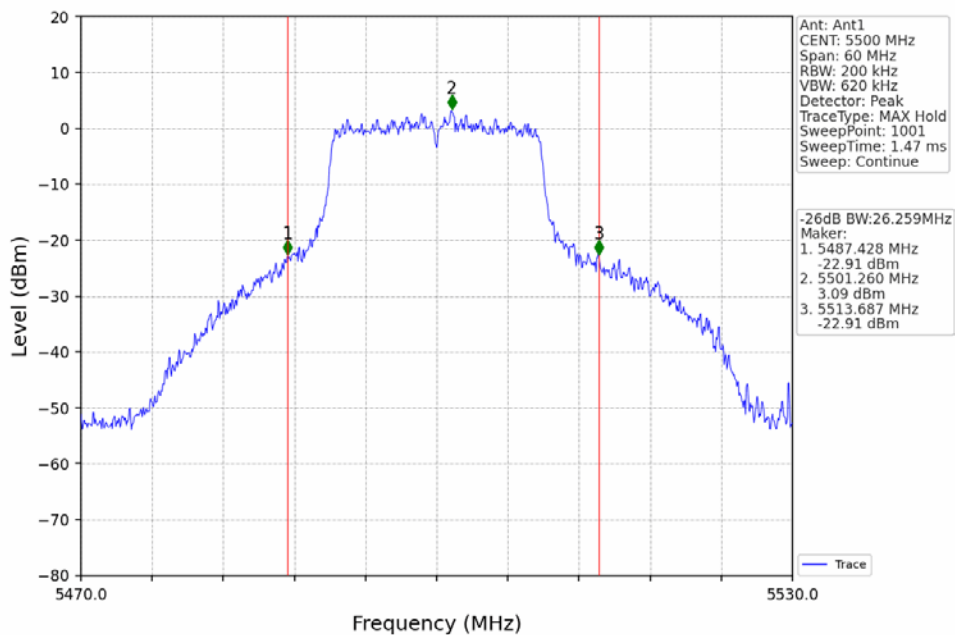
802.11n(HT20)\_MCH\_5300MHz\_Ant1\_NTNV



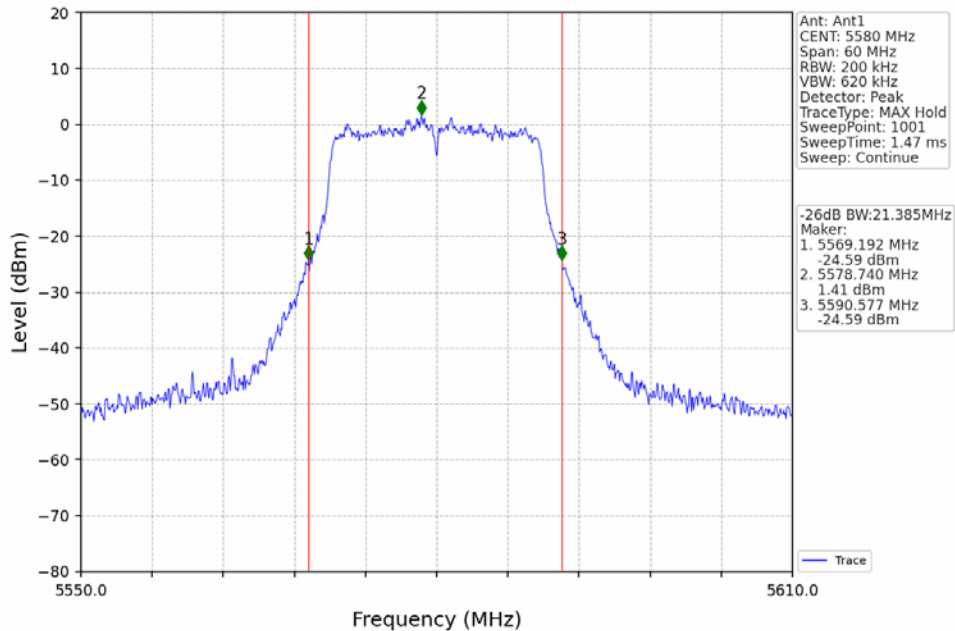
802.11n(HT20)\_HCH\_5320MHz\_Ant1\_NTNV



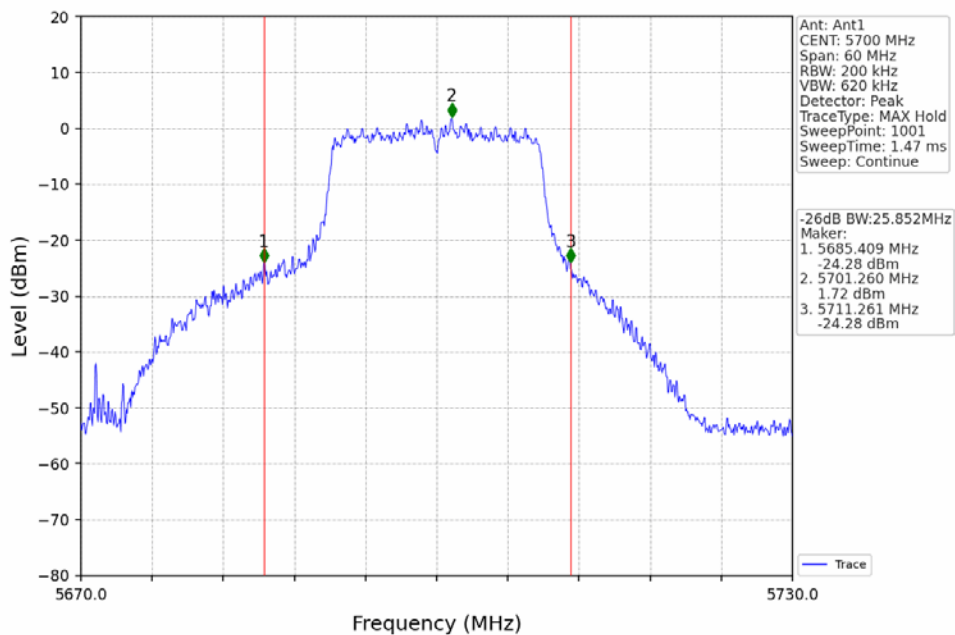
802.11n(HT20)\_LCH\_5500MHz\_Ant1\_NTNV



802.11n(HT20)\_MCH\_5580MHz\_Ant1\_NTNV

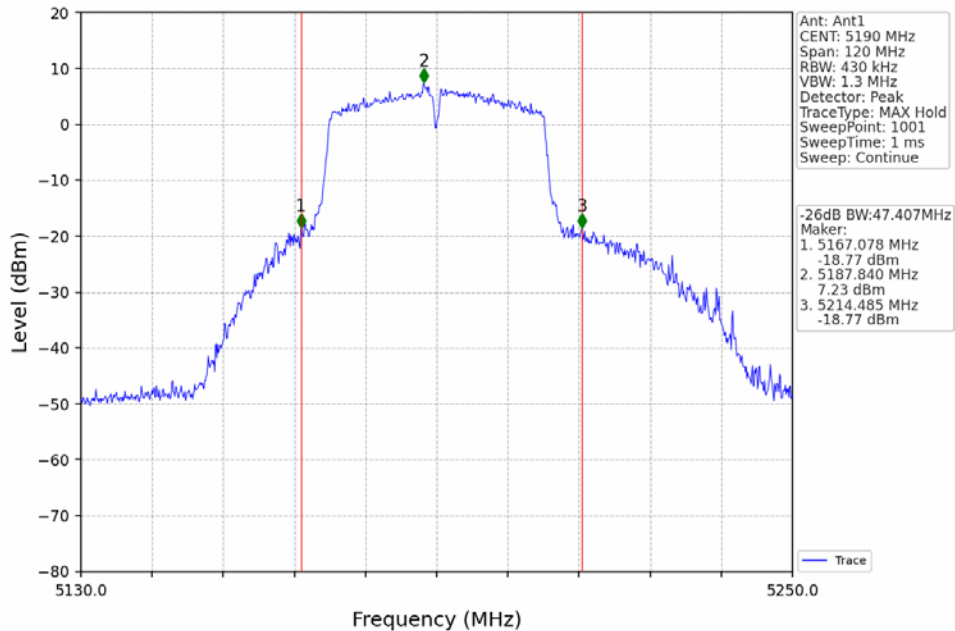


802.11n(HT20)\_HCH\_5700MHz\_Ant1\_NTNV





802.11n(HT40)\_LCH\_5190MHz\_Ant1\_NTNV



802.11n(HT40)\_HCH\_5230MHz\_Ant1\_NTNV

