



## V380 Pro CCTV Camera

Product Manual V3.1

Read carefully before using the device and keep it for subsequent use

### Download

Search for "V380 Pro" in the APP Store or scan the QR code below to download and install the V380 Pro APP.



Scan the QR code to download the V380 Pro APP

### Electronic manual

Use the V380 Pro APP to scan the QR code on the camera to add the device and follow the instructions to view the electronic manual of the device.

### Reset the camera

1. Power on the camera. (For 4G camera, please ensure the SIM card has been inserted into the camera before power on.)
2. Press and hold the reset button for several seconds, the camera will prompt "Reset completed".

SIM card slot



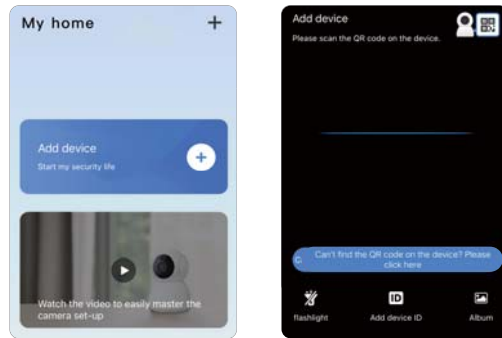
Reset button



Note: The position of the reset button and SIM card slot is for reference only, depending on your device.

### Add camera

1. Open APP to register your account and log in.
2. Click the "+" icon and scan the QR code on the device.



Note: Each APP version may be different, please follow the prompts in the latest version of APP to set up the camera.

After scanning the QR code on the device, please select the corresponding network configuration method according to your network configuration interface.

### Wi-Fi

1. QR code network connection, please check page 6.
2. Bluetooth network connection, please check page 8.
3. AP hotspot connection, please check page 9.

### 4G

Please check page 11.

### Solar-powered camera indicator light

#### Wi-Fi camera

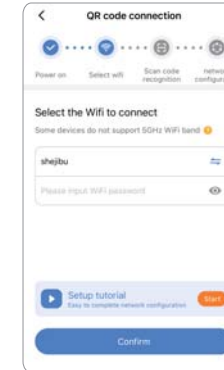
1. Indicator is off: device is powered off or standby mode;
2. Slow flashing red light: device is ready for connecting;
3. Quick flashing red light: device is connecting to the router;
4. Solid yellow light: device has been connected to the Internet;
5. Flashing yellow light: device is connecting to the Internet. If the device cannot connect to the Internet normally, please check whether the router can access the Internet normally.

#### 4G camera

1. Indicator is off: device is powered off or standby mode;
2. Indicator is red: device is powered on and wakes up, but the network is unavailable;
3. Indicator is yellow: device is connected to the network;
4. Indicator red light flashes continuously: device can't detect the SIM card, please check whether the card is inserted;
5. Indicator red light flashes twice continuously: SIM card can be detected, but device can't connect to the Internet. Please check whether mobile data plan is available.

### QR code network connection

1. Please select the Wi-Fi that the device needs to connect to, and enter the correct password.



Note: The device only supports 2.4GHz Wi-Fi. Please select Wi-Fi without "5G". The name of Wi-Fi should not contain special symbols.

2. The APP will generate the QR code and then use camera to scan this QR code.
3. After the camera identifies the QR code successfully, it will prompt "Received configuration information". Click "I have heard the tone" in the APP after hearing that tone.
4. After the connection completed, it will prompt "Network connected".

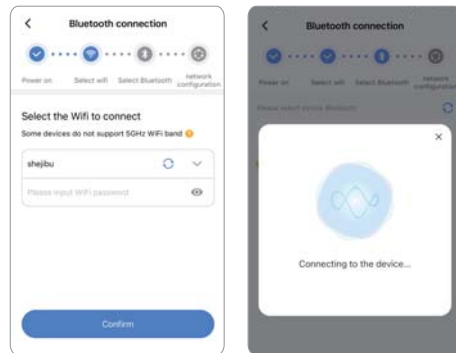


\* Adding completed" is on page 11

### Bluetooth network connection

Note: Turn on your phone's Bluetooth before you add a camera

1. Connect your mobile phone to 2.4GHz Wi-Fi first.
2. Confirm the connected Wi-Fi and enter the password.

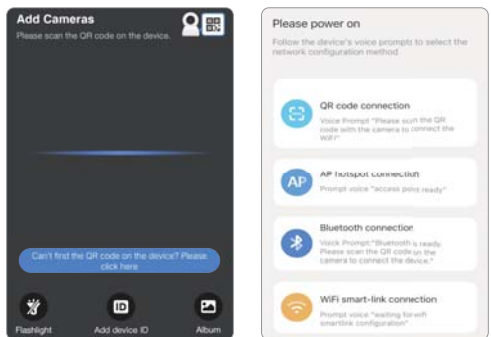


\* Adding completed" is on page 11

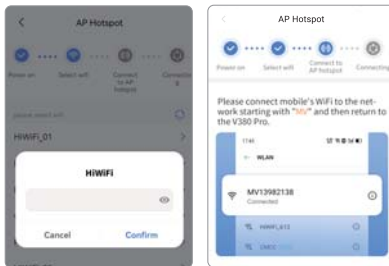
### AP hotspot connection

The device also supports the "AP hotspot connection". Please ensure the device has been reset.

1. Click "+" in the upper right corner, select "Can't find the QR code on the device? Please click here" - "Wi-Fi Smart Camera" - "AP hotspot connection".



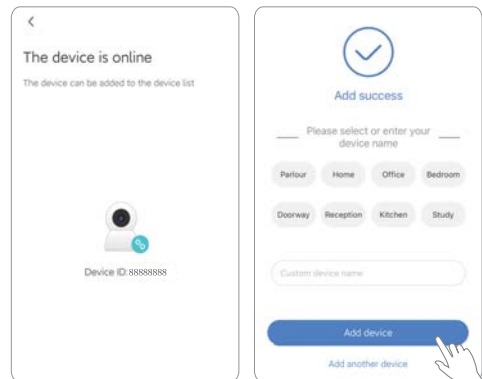
2. Select the Wi-Fi that the device needs to connect to, and enter the correct password.
- (For iOS, if you want to connect to other Wi-Fi, please connect your mobile phone to the Wi-Fi you need and then return to the APP to refresh)
3. Connect to the hotspot of the device based on APP instructions.
4. After the hotspot connection is successful, return to the APP, and the device will automatically connect to Wi-Fi.



Note: You can find the corresponding ID on the device body tag which is for the hotspot's name. \* Adding completed" is on page 11

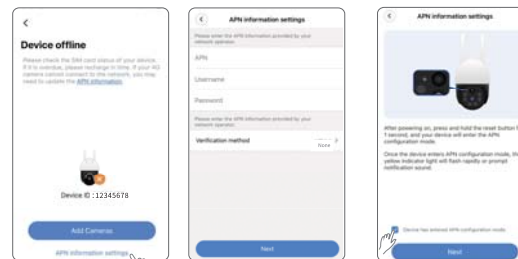
### Add 4G camera

After the camera is successfully networked, it will appear online and you can create a group for the camera and set the name.



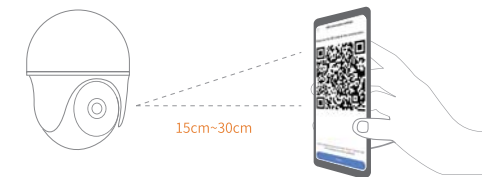
### APN settings

1. Click "APN information settings" to set APN parameters.
2. After the setting is complete, click "Next".
3. Short press the reset button on the device for one second. The device's yellow indicator light will flash or the device will prompt a sound of "Beep", which mean: it has entered the APN setting mode.



If the 4G camera is offline, please try to set APN. Please contact your SIM card operator for APN information.

4. The APP will generate the QR code and then use the device to scan this QR code.
5. After the device identifies the QR code successfully, it will prompt a notification sound.



### Attentions

- Concerning Micro SD card recording, when the recording capacity reaches the upper limit, the earliest recording file of the recording event will be automatically overwritten.
- Long-term use in the unconventional environment (high temperature, high humidity, the large amount of dust or smoke, etc.) may damage the camera.
- V380 Pro APP and device firmware will be updated from time to time. For your best experience, please update the APP and upgrade the device firmware in time.

RF exposure statement  
This equipment complies with the FCC radiation exposure limits set forth for an uncontrolled environment. This transmitter must not be co-located or operating in conjunction with any other antenna or transmitter.

FCC Warning  
This device complies with Part 15 of the FCC Rules. Operation is subject to the following two conditions:  
(1) This device may not cause harmful interference, and (2) this device must accept any interference received, including interference that may cause undesired operation.

Note: This equipment has been tested and found to comply with the limits for a Class B digital device, pursuant to part 15 of the FCC Rules. These limits are designed to provide reasonable protection against harmful interference in a residential installation. This equipment generates, uses and can radiate radio frequency energy and, if not installed and used in accordance with the instructions, may cause harmful interference to radio communications. However, there is no guarantee that interference will not occur in a particular installation. If this equipment does cause harmful interference to radio or television reception, which can be determined by turning the equipment off and on, the user is encouraged to try to correct the interference by one or more of the following measures:  
—Reorient or relocate the receiving antenna.  
—Increase the separation between the equipment and receiver.  
—Connect the equipment into an outlet on a circuit different from that to which the receiver is connected.  
—Consult the dealer or an experienced radio/TV technician for help.

NOTE 2: Any changes or modifications to this unit not expressly approved by the party responsible for compliance could void the user's authority to operate the equipment.

FCC Radiation Exposure Statement:  
This equipment complies with FCC radiation exposure limits set forth for an uncontrolled environment. This equipment should be installed and operated with minimum distance 20cm between the radiator & your body.

