

# User Manual

**Wireless CarPlay | Android Auto Media Player**



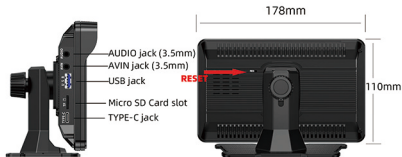
## CONTENTS

Content.....	1
Product Specification.....	2
Product Port.....	3
Function Introduction.....	4
1 Carplay Connection Method.....	4
2 Disconnect Carplay .....	5
3 Android Auto Connection Method .....	6
4 Disconnect Android Auto.....	7
5 Disconnect Bluetooth.....	8
6 Trouble shooting.....	9
7 Bluetooth & Bluetooth Music.....	11
8 TF Card.....	11
9 FM Transmit.....	12
10 Rearview Cam.....	13
11 Shortcut Buttons Functions.....	14
12 System Setting.....	14
Installation Guide.....	
1 Mounting Bracket .....	16
2 Fixed Bracket .....	16
3 Installation of Equipment.....	17
4 Rearview Camera Installation.....	18
Customer Service.....	20
Package.....	20

## Product Specification

<b>Key Component</b>	Main Chip	F133B
	ROM	1GB
	Display	7 inches; Resolution:1024*600
	TP	7 inches Capacitive Touch Screen een
	Wi-Fi	2.4G Wi-Fi
	Bluetooth	BT5.0
	Loudspeaker	Built-in
	Microphone	Built-in
<b>Port</b>	TF card Slot	Expansion memory TF card: Up to 64GB
	Type-C Jack	Type-C 16-Pin DC 5V/2A
	USB jack	Supports wired connections
	AUX Jack	One AUX 3.5MM Jack
	AV In Jack	One CVBS rear camera jack (3.5MM, 4-segment headphone holder) Support being triggered by reverse gear.
<b>Camera</b>	Rear Camera	CVBS
<b>Physical Buttons</b>	Standby Key	One
	Reset Key	One
<b>Software</b>	OS	Linux
	UI	Built-in Bespoke UI
	Projection screen	Wireless Carplay / Wireless Android Auto
	Language	Supported languages (Simplified Chinese, English, Japanese, Russian, French, etc.)
	Blue Tooth	Synchronize mobile phone
	BT Music	Synchronize mobile phone music
	Local audio play	Support: MP3/WAV/WMA/AAC/OGG/FLAC
<b>Environment</b>	Work Voltage	DC 5V
	Work Current	<1.5A
	Work Temp	-10°C ~ 60°C
	Store Temp	-20°C ~ 70°C

## Product Port:



## Key Function

### 1) Standby Key

- Start the car engine, and the device turns on automatically about 3-5 seconds.
- Short press the standby key to turn on/off the screen and sound only, and the system is still working. **It is not the Power Off Key.**
- **[Attention:] For vehicles with continuous power supply for cigarette lighters, it is necessary to pay attention to unplug the car charger after flameout.**


### 2) Reset Key (On the back of the device)

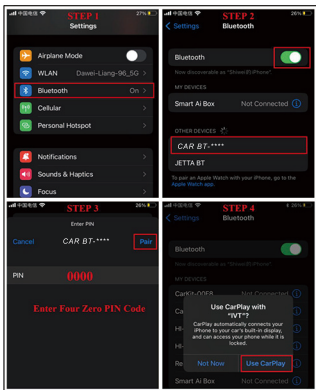
If the device crashes or has other faults, short press the Reset Key to restart.

## Function Introduction

### 1 Carplay Connection Method



- 1.1 Pressing the "Carplay"  on the device, you can view the device's BT name as "CAR BT-\*\*\*\*" and the Pairing Code "0000".
- 1.2 iPhone Setup follows the steps: 1) Turn on wifi (no need to connect) 2) Turn on bluetooth and connect:  
Bluetooth → Search & select "CAR BT-\*\*\*\*" → Enter PIN "0000" (four zero) and Pair → Agree "Use Carplay" → Set Successfully.



**1.3** As long as your iPhone has been paired, it will automatically enter Carplay function next time.

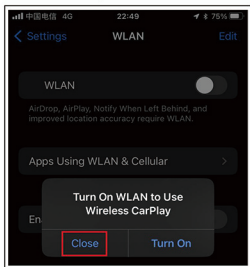
**1.4 [Attention]:** Please make sure that your iPhone IOS version above 12.4 and has Bluetooth enabled, otherwise it will not connect Carplay automatically.

## 2 Disconnect Carplay

Turn off your iPhone WLAN: Settings → WLAN → Turn Off WLAN and your iPhone will Pop-up alert "Turn On WLAN to Use Wireless CarPlay".

- Select "Close" to disconnect Carplay immediately.
- Choose "Turn On" to continue to use Carplay.
- At Any time, turn on the WLAN will resume using Carplay.

**Note:** Please Keep Bluetooth Enable.



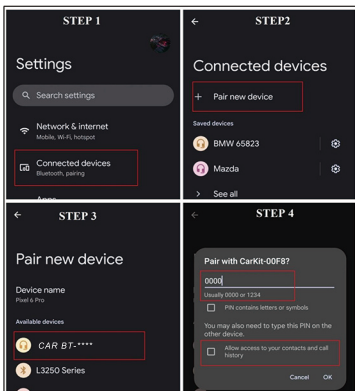
### 3 Android Auto Connection Method



**3.1** Pressing the "phoneLink"  , on the device, you can view the device's BT name as "CAR BT -\*\*\*\*" and the Pairing Code "0000".

**3.2** Android phone setup follows the steps: 1)Turn on wifi (no need to connect)  
2)Turn on bluetooth and connect:

Devices → Pair new device → Search & select 'CAR BT -\*\*\*\*' → Enter PIN "0000" (four zero) and OK → Set Successfully. (Optional: Allow access to your contacts and call history)



**3.3** As long as your Android phone has been paired, it will automatically enter Android Auto function next time.

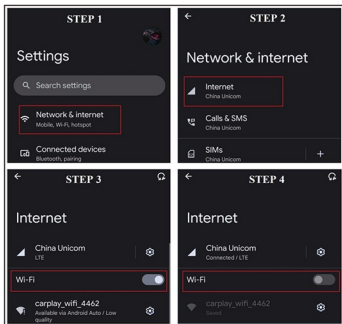
**3.4 [Attention]:** Please make sure that your Android version above 10 and your phone has Bluetooth enabled, otherwise it will not connect automatically.

#### 4 Disconnect Android Auto:

Turn off your Android phone WLAN: Settings → Network & internet → Turn Off WLAN → Disconnect Successfully.

➤ At Any time, turn on the WLAN will resume using Android Auto.

**Note:** Please Keep Bluetooth Enable.





### [Attention]:

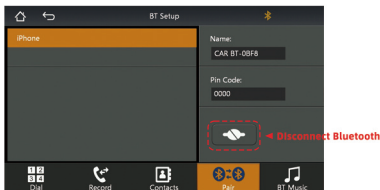
When Carplay / Android Auto is disconnected, the device system will return to the main interface, and you should know as follows:

- For Carplay: It will return to the main interface immediately at any time.
- For Android Auto: The first disconnection operation will stay in the Android Auto interface for a few seconds and it is normal to be unable to operate.

## 5 Disconnect Bluetooth:

**5.1** When Carplay / Android Auto disconnects, this device system returns to the main interface, and you can make a Bluetooth phone call or just play Bluetooth music. (At this moment, your mobile phone Bluetooth is still connected with this device).

**5.2** If you want to disconnect the Bluetooth with the device, please disconnect it at the device end. As shown in the figure below.



**5.3 [Attention]:** If you disconnect the Bluetooth CarKit at your mobile phone end, the device will reconnect your phone Bluetooth after a few seconds automatically. Please disconnect it at the device end.

## **6 Trouble shooting:**

### **Summary of Connection / Disconnection**

- Connect Carplay / Android Auto: Pair your mobile phone Bluetooth with the device to connect and enter the functions.
- Disconnect Carplay / Android Auto: Turn Off your mobile phone WLAN to disconnect and exit the functions.
- Connect Bluetooth: Operate at your mobile phone end.
- Disconnect Bluetooth: Operate at the device end.

### **Trouble shooting**

If the above linking operation is not successful, please follow the guidelines:

- 1)** Forget the connected device's Bluetooth and try to reconnect.
- 2)** Please restart both your mobile phone & the device, and try again.
- 3)** Check Android phone settings:

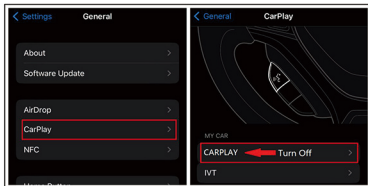
Check whether used the proxy VPN network, when your phone uses the proxy VPN network, Android Auto will be prohibited. Please exit the "Proxy VPN" network and try again. Or, Search and check

**whether Android Auto is installed & run** on your phone.

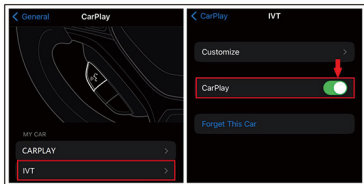
**4) Check Apple iPhone settings:**

➤ Setting → General → Carplay:

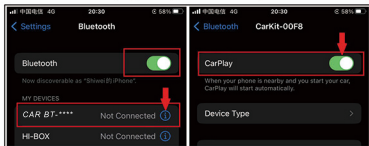
Our device's Carplay name is "IVT", Check whether there is another connected Carplay, if there is, please turn off or forget it.



➤ Setting → General → Carplay → IVT, Check whether IVT Carplay setting is turned off, please turn on and try again.




➤ Setting → Bluetooth → CarKit Bluetooth Information: Check whether CARBT Bluetooth Carplay setting is turned off, pls turn on and retry.

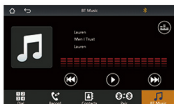
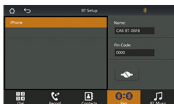


**[Attention]:** According to the above operations, it is still unable to connect, please consult our customer service personnel for help.

## 7 Bluetooth & Bluetooth Music



Press the "" icons to enter the Bluetooth interface. You can use Bluetooth phone and Bluetooth music functions here.



## 8 TF Card



Press the "TF Card" icon to enter. If the TF card is not inserted, it will

prompt "SD Invalid" in the upper left corner.

**8.1** You can view audio files and folders stored in TF card here.

**8.2** When you click on any audio, you will enter the music playing interface.

## 9 Audio



### 9.1 FM Transmit



- 1) The frequency ranges from 87.5MHz to 108MHz.
- 2) You can click or slide the icon to select the frequency band quickly, or you can click the Left or Right arrow to select precisely.



### 3) [Attention]:

For better sound quality, please use an unoccupied frequency band.

### 9.2 AUX

Audio output from AUX. Adjust the volume on the original car.



### 9.3 SPK Audio output from the speaker



### 9.4 BT Please use your mobile phone to connect to the original car Bluetooth. Support modes: Wireless Carplay, Android Auto



## 10 Rearview Cam



**10.1** Please refer to page 18 Rearview Camera Installation before using.

**10.2** If the rearview camera is not installed, it will display "No Signal".

**10.3** "Rearview Cam" can be triggered ways:

Press "Rearview Cam" icon in main interface or Reverse gear of vehicle.

In case of being triggered by reverse gear, it will automatically enter and display the rear view image.

### **[Safety Warning]:**

When **driving** normally, please try **not to turn on** the rearview cam to avoid distracting attention.