

Wireless intercom caller
User Manual

Model: H8

Operation video:

Get video instruction on Youtube, search " H8 doorbell ".

Outdoor doorbell and indoor doorbell's working way:

- 1.Click call button (📞)on outdoor doorbell at first.
- 2.The indoor doorbell rings.
- 3.Hold down the talk button(🗣️) and speak, Release to stop.

Note:After the call ends, wait one minute for the next call.

Two indoor doorbells' working way

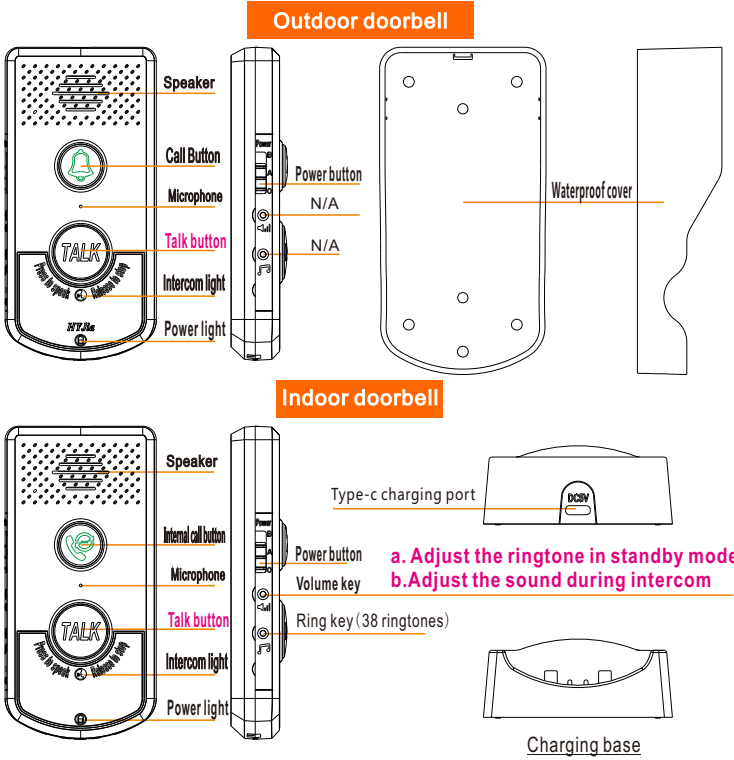
- Operation A: 1.Click call button(📞) on indoor doorbell .
- 2.The other indoor doorbell rings.
- Operation B: 1.Hold down the talk button(🗣️)and speak, Release to stop.
- 2.The indoor doorbell that hears the voice, also hold the talk button (🗣️)to speak, Release to stop.

Parameters

Product name	outdoor doorbell	indoor doorbell
Working voltage	Rechargeable lithium battery 1800mA	
Work temperature	-20℃-55℃	
Wireless distance	1000M (w/o any obstacle) 20M~50M (w/obstacle)	
Wireless Frequency	410M-490M	
Working time	More than 8 months	About 3~5 days
Waterproof level	IP54	N/A
SIZE	121.5mm*61.5mm*31.3mm	125mm*70mm*56mm

1

PRODUCT PROFILE



2

Power on key -- Description :

Gear 0--Power off Gear A--Frequency A Gear B--Frequency B
When there is interference in the call, the outdoor doorbell and the indoordoorbell switch gear A or gear B at the same time.

★Installation instructions (Consignee operation)

- 1.Unscrew the screws of the waterproof cover with a screwdriver, and take the outdoor doorbell out of the waterproof cover.
- 2.Turn the power button of the outdoor doorbell to gear A or B--No sound(means normal)
- 3.Turn the power button of the indoor doorbell to gear A or B --Belling(means normal)
- 4. Click the call button(📞) of outdoor doorbell,and the indoor doorbell will ring.
- 5.After the outdoor doorbell is fully charged, put it in the waterproof cover and screw it down.
- 6.Install the outdoor doorbell on the door or wall.

Important note:

The gear of the outdoor doorbell and indoor doorbell must be consistent , then can communicate normally.

Model 1V1 connection code step:(Factory settings)

- 1. Press and hold the Talk button(🗣️) of indoor doorbell.
- 2.Turn the power button of the indoor doorbell to gear A or B, and make a sound of “du”. Meanwhile, intercom lights (🔊)flashing white.
- 3.Turn the power button of the outdoor doorbell to gear A or B the gear between them must consistent.
- 4. Press the call button(📞) of outdoor doorbell.
- 5. Indoor doorbell make a sound and the intercom light do not flash. Now, It is connected.

Model 1V2 connection code step:(Factory settings)

- 1. Press and hold the Talk button(🗣️) of indoor doorbell.
- 2.Turn the power button of the indoor doorbell to gear A or B, and make a sound of “du”. Meanwhile, intercom lights (🔊)flashing white.
- 3. Press and hold the Talk button(🗣️) of another indoor doorbell.
- 4.Turn the power button of the indoor doorbell to gear A or B, and make a sound of “du”. Meanwhile, intercom lights (🔊)flashing white.
- 5.Turn the power button of the outdoor doorbell to gear A or B the gear between them must consistent.
- 6. Press the call button(📞) of outdoor doorbell.
- 7. Two indoor doorbell make a sound and the intercom light do not flash. Now, It is connected.

3

Two indoor doorbell connection code step:(Factory settings)

- 1. Press and hold the Talk button(🗣️) of indoor doorbell.
- 2.Turn the power button of the indoor doorbell to gear A or B, and make a sound of “du”. Meanwhile, intercom lights (🔊)flashing white.
- 3.The other indoor doorbell is also operated according to the above.
- 4. Press the internal call button(📞) of one indoor doorbell.
- 5. Two indoor doorbell make (didi) sound and the intercom light do not flash. Now, It is connected.

The cleaning steps of connection code:(Factory settings)

- 1. Press and hold the Ring key (🔔) of indoor doorbell.
- 2. Turn the power button of indoor doorbell into the A gear or B gear, and make two sounds of “du”.
- 3.Intercom light - Flash red 3 times, code clearing successful.

Important note:

Model (1V2) and (two Indoor doorbell):
Cleaning the code of two indoor doorbells above the cleaning steps.

Outdoor doorbell charging mode :(Consignee operation)

- 1. Use a screwdriver to unscrew the screws fixing the rain cover to the outdoor doorbell.
- 2.Take it out of the Waterproof cover and put it on the charging base of the indoor doorbell for charging.

Remark : it takes about 4 hours to fully charge.

The way to remove the outdoor doorbell:(Consignee operation)

- 1. Remove with a screwdriver or attach the screws under the waterproof cover.
- 2. Stick to the wall with double-sided sponge glue.

FAQ:

- 1. Between outdoor doorbell and indoor doorbell if the power buttons are consistent ---must be consistent
- 2. If the outdoor doorbell has electric quantity --- charging
- 3. If the indoor doorbell has electric quantity --- charging
- 4. Click call button of the outdoor doorbell the indoor doorbell does not ring -- re-check the code
- 5. Adjusting the installation Position --- if the distance too far or too many obstacles

Notes to Customers:

- A.The indoor doorbell power adapter must be purchased separately by the customer.
- B.1 indoor doorbell requires 1 power adapter (5V/1A-2A) -- universal power adapter for mobile phones.
- C. There is noise during calls within 2 meters.

4

This device complies with part 15 of the FCC Rules.

Operation is subject to the following two conditions:

- (1) this device may not cause harmful interference, and
- (2) this device must accept any interference received, including interference that may cause undesired operation.

Any changes or modifications not expressly approved by the party responsible for compliance could void the user's authority to operate the equipment.

NOTE: This equipment has been tested and found to comply with the limits for a Class B digital device, pursuant to Part 15 of the FCC Rules.

These limits are designed to provide reasonable protection against harmful interference in a residential installation.

This equipment generates, uses and can radiate radio frequency energy and, if not installed and used in accordance with the instructions, may cause harmful interference to radio communications.

However, there is no guarantee that interference will not occur in a particular installation.

If this equipment does cause harmful interference to radio or television reception, which can be determined by turning the equipment off and on,

the user is encouraged to try to correct the interference by one or more of the following measures:

- Reorient or relocate the receiving antenna.
- Increase the separation between the equipment and receiver.
- Connect the equipment into an outlet on a circuit different from that to which the receiver is connected.
- Consult the dealer or an experienced radio/TV technician for help.

The device has been evaluated to meet general RF exposure requirement.

The device can be used in portable exposure condition without restriction