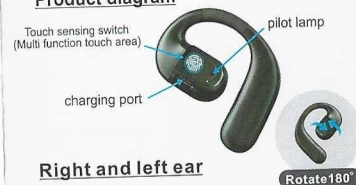


Product diagram



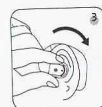
Right and left ear



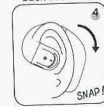
1. Take out the headset



2. Wear along the back of the ear



3. Gently adjust the headset to a comfortable position



4. Headphones ready

Instructions for use

Before first use, please use the Type-c charging cable inside the packaging combined with a charger below 5V-1A to charge the earphones for more than 30 minutes. Wait for the earphones to fully charge before turning them on for use (it is recommended to charge for no more than 2 hours).

- Mobile phone fast charge cable is not supported

Connect your phone

1. Long press the multifunctional touch button for 3s to start the machine (after the first connection is successful, the second connection will be automatically connected).

2. Turn on Bluetooth of mobile phone or other devices: Settings - Bluetooth - Search for Bluetooth name "OWS Earphone" and click Connect.

Function introduction

	Phone Mode One touch: answer Double touch: hang up the phone Long press for 1.5 seconds: reject the call
	Music mode One touch: play/pause Double touch: play the next song Three touch: play the last song
	Long touch for 1.5 seconds: wake up the voice assistant Chinese/English mode switching: double click the multifunction key when not connected
	Power on mode Long touch for 3 seconds
	Off Mode Long touch for 5 seconds

Product parameters

Bluetooth version: V 5.4
Horn specification: 16 mm
Call duration: 28 hours
Battery capacity: 180mAh
Effective distance: 10M
Control method: touch control
Music duration: 28 hours
Charging duration: 1.2 hours



YJ-78
快速入门指南
User Manual



Open Wearable Stereo

产品示意图



佩戴方式 (左右耳佩戴)



1. 拿出耳机



2. 顺着耳后佩戴



3. 调整耳机至舒适位置



4. 耳机佩戴完成

使用须知

首次使用前, 请使用包装内的Type-c充电线结合5V-1A以下的充电器为耳机进行充电30分钟以上, 待耳机充满电后再开机使用 (建议充电时长不超过2小时)。

• 不支持使用手机快充线

连接手机

1. 长按触摸感应开关3秒开机 (首次连接成功后, 第二次开机会自动连接)。
2. 打开手机蓝牙或其他设备: 设置—蓝牙—搜索蓝牙名称 “OWS Earphone” 点击连接。

产品参数

蓝牙版本: V 5.4
喇叭规格: 16 mm
通话时长: 28小时
电池容量: 180mAh

有效距离: 10M
控制方式: 触控
音乐时长: 28小时
充电时长: 1.2小时

耳机操作说明

开/关机:	(长按5秒) 触摸感应开关
暂停/播放:	(单击) 触摸感应开关
音量+:	(连续三击) 触摸感应开关
下一曲:	(连续双击) 触摸感应开关
接听电话:	(单击) 触摸感应开关
挂断电话:	(双击) 触摸感应开关
来电拒接:	(长按) 触摸感应开关2秒
呼叫Siri:	(长按) 触摸感应开关2秒
中英文切换:	未连接手机状态下 (连续双击) 触摸感应开关

提示: 音量加减需要在手机上调节

FCC warning:

1. This device should be installed and operated with minimum distance 0cm between the radiator&your body.
2. This device complies with part 15 of the FCC Rules. Operation is subject to the following two conditions:
 - (1) This device may not cause harmful interference, and
 - (2) This device must accept any interference received, including interference that may cause undesired operation.
3. Changes or modifications not expressly approved by the party responsible for compliance could void the user's authority to operate the equipment.
4. This equipment has been tested and found to comply with the limits for a Class B digital device, pursuant to part 15 of the FCC Rules. These limits are designed to provide reasonable protection against harmful interference in a residential installation. This equipment generates, uses and can radiate radio frequency energy and, if not installed and used in accordance with the instructions, may cause harmful interference to radio communications. However, there is no guarantee that interference will not occur in a particular installation. If this equipment does cause harmful interference to radio or television reception, which can be determined by turning the equipment off and on, the user is encouraged to try to correct the interference by one or more of the following measures:
 - Reorient or relocate the receiving antenna.
 - Increase the separation between the equipment and receiver.
 - Connect the equipment into an outlet on a circuit different from that to which the receiver is connected.
 - Consult the dealer or an experienced radio/TV technician for help.